

**LEGEND:**

- = 90° SYMBOL  
 ● = PROPOSED WELLHEAD.  
 ○ = TARGET BOTTOM HOLE.  
 ◇ = TOP OF PRODUCTION.  
 ▲ = SECTION CORNERS LOCATED.

**T10N, R58W, 6th P.M.**

Target  
Bottom Hole

R  
58  
W

R  
57  
W

N89°33'18"E - 2674.93' (Meas.)

S89°33'18"W - 2674.93' (Meas.)

2010 Alum. Cap,  
0.3' High, N/E Fence  
Lat: 40.816975°  
Long: 103.822819°

2012 Alum. Cap,  
0.4' High,  
Lat: 40.817031°  
Long: 103.813158°

1917 Brass Cap,  
1.0' High  
Lat: 40.817086°  
Long: 103.803497°

NOTE:  
THE PROPOSED TARGET BOTTOM HOLE FOR  
THIS WELL IS LOCATED IN THE NW 1/4 NE  
1/4 OF SECTION 24, T10N, R58W, 6th P.M.  
AT 100' FNL 1980' FEL. IT BEARS  
N00°01'48"E 9895.21' FROM THE PROPOSED  
TOP OF PRODUCTION.

2012 Alum. Cap,  
0.1' High,  
Lat: 40.809672°  
Long: 103.822617°

N00°01'48"E  
9895.21'

2012 Alum. Cap,  
Flush W/Ground,  
Lat: 40.809803°  
Long: 103.803386°

LINE TABLE		
LINE	DIRECTION	LENGTH
L1	N25°54'39"W	336.98'

25

Top of Production

**RAZOR #250-2443**

Elev. Ungraded Ground = 4718.2'

2010 Alum. Cap,  
Flush W/Ground,  
N/W Fence  
Lat: 40.802369°  
Long: 103.822411°

S89°15'31"W - 2670.99' (Meas.)

2012 Alum. Cap,  
0.2' High,  
Lat: 40.802461°  
Long: 103.812767°

S89°15'31"W  
2670.99' (Meas.)

2010 Alum. Cap,  
Flush W/Ground,  
Lat: 40.802556°  
Long: 103.803122°



PDOP = 1.4

**NAD 83 (SURFACE LOCATION)**

LATITUDE = 40°48'11.96" (40.803322)  
LONGITUDE = 103°48'37.09" (103.810303)

**NAD 27 (SURFACE LOCATION)**

LATITUDE = 40°48'12.01" (40.803336)  
LONGITUDE = 103°48'35.29" (103.809803)

**NAD 83 (Top Of Production)**

LATITUDE = 40°48'14.96" (40.804156)  
LONGITUDE = 103°48'39.01" (103.810836)

**NAD 27 (Top Of Production)**

LATITUDE = 40°48'15.01" (40.804169)  
LONGITUDE = 103°48'37.20" (103.810333)

**BASIS OF BEARINGS**

BASIS OF BEARINGS IS A G.P.S. OBSERVATION

**BASIS OF ELEVATION**

SPOT ELEVATION LOCATED AT THE NORTHEAST CORNER OF SECTION 15, T9N, R58W, 6th P.M. TAKEN FROM THE GATEHOOK SPRING, QUADRANGLE, COLORADO, WELD COUNTY, 7.5 MINUTE QUAD (TOPOGRAPHIC MAP) PUBLISHED BY THE UNITED STATES DEPARTMENT OF THE INTERIOR, GEOLOGICAL SURVEY. SAID ELEVATION IS MARKED AS BEING 4679 FEET.



**WHITING OIL & GAS CORP.**

**RAZOR #250-2443 (SURFACE LOCATION)**  
**SW 1/4 SE 1/4, SECTION 25, T10N, R58W, 6th P.M.**  
**WELD COUNTY, COLORADO**

SURVEYED BY: DALLAS NIELSEN, B.C.	DATE: 03-10-15
DRAWN BY: K.B.	DATE DRAWN: 03-23-15
SCALE: 1" = 1000'	REVISED: 03-01-16 C.D.L.
<b>WELL LOCATION PLAT</b>	

**CERTIFICATE**

THIS IS TO CERTIFY THAT THE ABOVE PLAT WAS PREPARED FROM FIELD NOTES OF ACTUAL SURVEYS MADE BY ME OR UNDER MY SUPERVISION AND THAT THE SAME ARE TRUE AND CORRECT TO THE BEST OF MY KNOWLEDGE AND BELIEF.

REGISTERED LAND SURVEYOR  
REGISTRATION NO. 28285  
STATE OF COLORADO

03-01-16

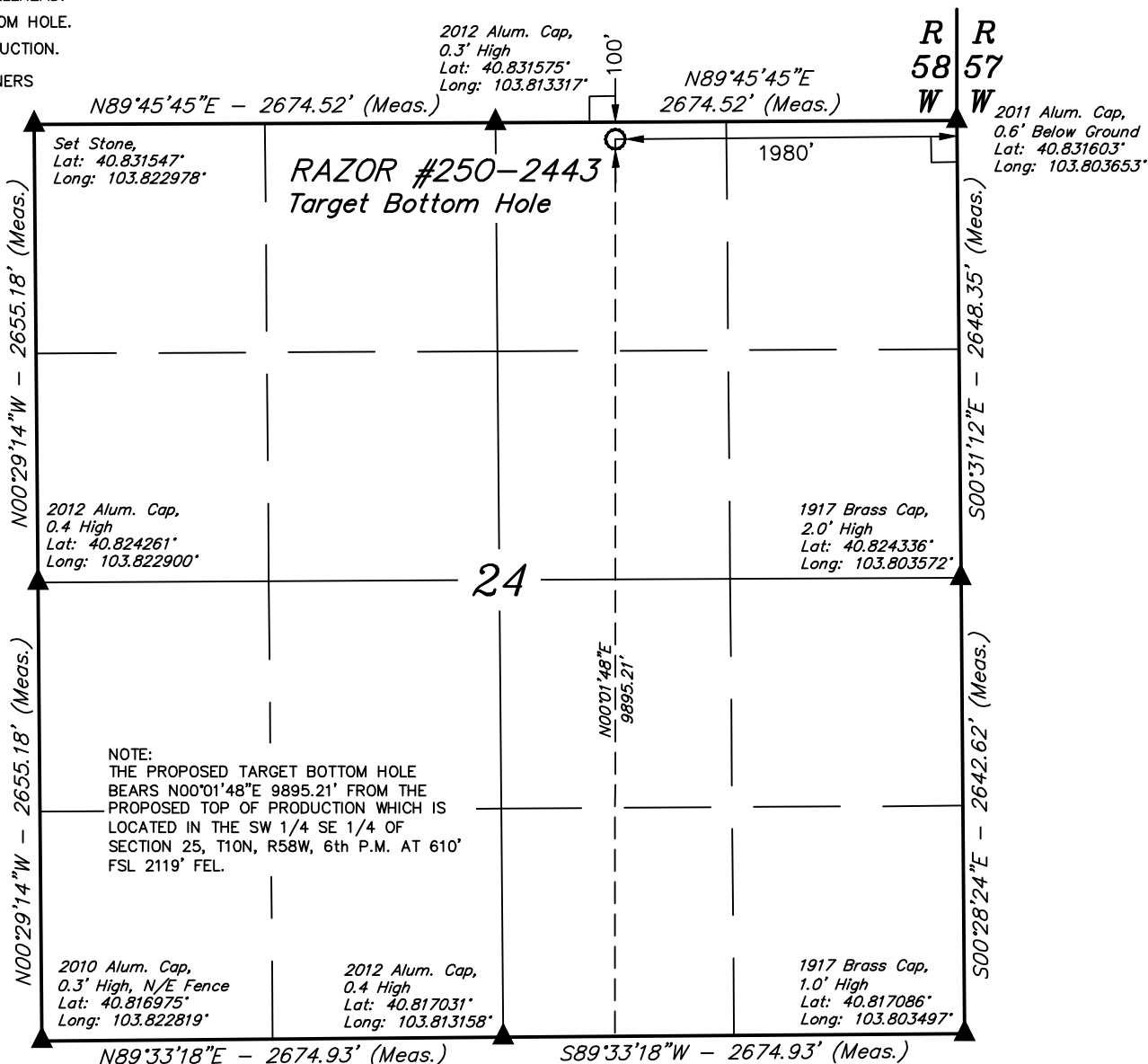


**UELS, LLC**  
Corporate Office \* 85 South 200 East  
Vernal, UT 84078 \* (435) 789-1017

**LEGEND:**

- = 90° SYMBOL  
 ● = PROPOSED WELLHEAD.  
 ○ = TARGET BOTTOM HOLE.  
 ◇ = TOP OF PRODUCTION.  
 ▲ = SECTION CORNERS LOCATED.

*T10N, R58W, 6th P.M.*



Top of Production ◇

**CERTIFICATE**

THIS IS TO CERTIFY THAT THE ABOVE PLAT WAS PREPARED FROM FIELD NOTES OF ACTUAL SURVEYS MADE BY ME OR UNDER MY SUPERVISION AND THAT THE SAME ARE TRUE AND CORRECT TO THE BEST OF MY KNOWLEDGE AND BELIEF.

**NAD 83 (TARGET BOTTOM HOLE)**

LATITUDE = 40°49'52.71" (40.831308)  
LONGITUDE = 103°48'38.90" (103.810806)

**NAD 27 (TARGET BOTTOM HOLE)**

LATITUDE = 40°49'52.76" (40.831322)  
LONGITUDE = 103°48'37.09" (103.810303)



**BASIS OF BEARINGS**  
BASIS OF BEARINGS IS A G.P.S. OBSERVATION

**BASIS OF ELEVATION**

SPOT ELEVATION LOCATED AT THE NORTHEAST CORNER OF SECTION 15, T9N, R58W, 6th P.M. TAKEN FROM THE GATEHOOK SPRING, QUADRANGLE, COLORADO, WELD COUNTY, 7.5 MINUTE QUAD (TOPOGRAPHIC MAP) PUBLISHED BY THE UNITED STATES DEPARTMENT OF THE INTERIOR, GEOLOGICAL SURVEY. SAID ELEVATION IS MARKED AS BEING 4679 FEET.

**WHITING OIL & GAS CORP.**

**RAZOR #250-2443 (TARGET BOTTOM HOLE)**  
**NW 1/4 NE 1/4, SECTION 24, T10N, R58W, 6th P.M.**  
**WELD COUNTY, COLORADO**

SURVEYED BY: DALLAS NIELSEN, B.C.	DATE: 03-10-15
DRAWN BY: K.B.	DATE DRAWN: 03-23-15
SCALE: 1" = 1000'	REVISED: 03-01-16 C.D.L.

**WELL LOCATION PLAT**

**UELS, LLC**  
Corporate Office \* 85 South 200 East  
Vernal, UT 84078 \* (435) 789-1017

