



STATE OF COLORADO
STATE BOARD OF LAND COMMISSIONERS

SURFACE USE AGREEMENT
OM 110118
Non-State and Pooled or Communitized Minerals

THIS SURFACE USE AGREEMENT (“Agreement”), dated this 31st day of December, 2015, (“Effective Date”) is made by and between the State of Colorado, acting by and through the Colorado State Board of Land Commissioners, whose address is 1127 Sherman Street, Suite 300, Denver, CO 80203, herein called the “State Land Board”, and, Bill Barrett Corporation, whose address is 1099 18th Street Suite 2300 Denver, CO 80202, herein called the “Operator”.

WHEREAS, the State Land Board represents that it is the surface owner and in possession of the surface estate in all or part of the following lands located in Weld County, Colorado (the “Property”):

Subdivision NENW, Section 27, Township 5 North, Range 62 West

WHEREAS, the State Land Board acknowledges that the Operator has certain rights to conduct oil and gas operations under the terms of oil and gas lease(s) underlying or adjacent to the Property;

WHEREAS, the State Land Board and the Operator, together also herein be called the “Parties”, desire to facilitate development of the oil and gas resources based on reasonable access and use of the Property, and to reach an understanding and agreement regarding the Operator’s surface access and use and to minimize disturbance associated with oil and gas operations.

NOW, THEREFORE, in consideration of the terms and conditions cited below, the State Land Board and the Operator agree as follows:

AGREED TO AND ACCEPTED AS OF THE DATE FIRST WRITTEN ABOVE.

The State Land Board: Colorado State Board of Land Commissioners

By: Christel Koranda

Printed Name: Christel Koranda

Title: Oil and Gas Leasing Manager



Operator: BILL BARRETT CORPORATION

By: Kenneth A. Worstolen

Printed Name: Kenneth A. Worstolen PKM

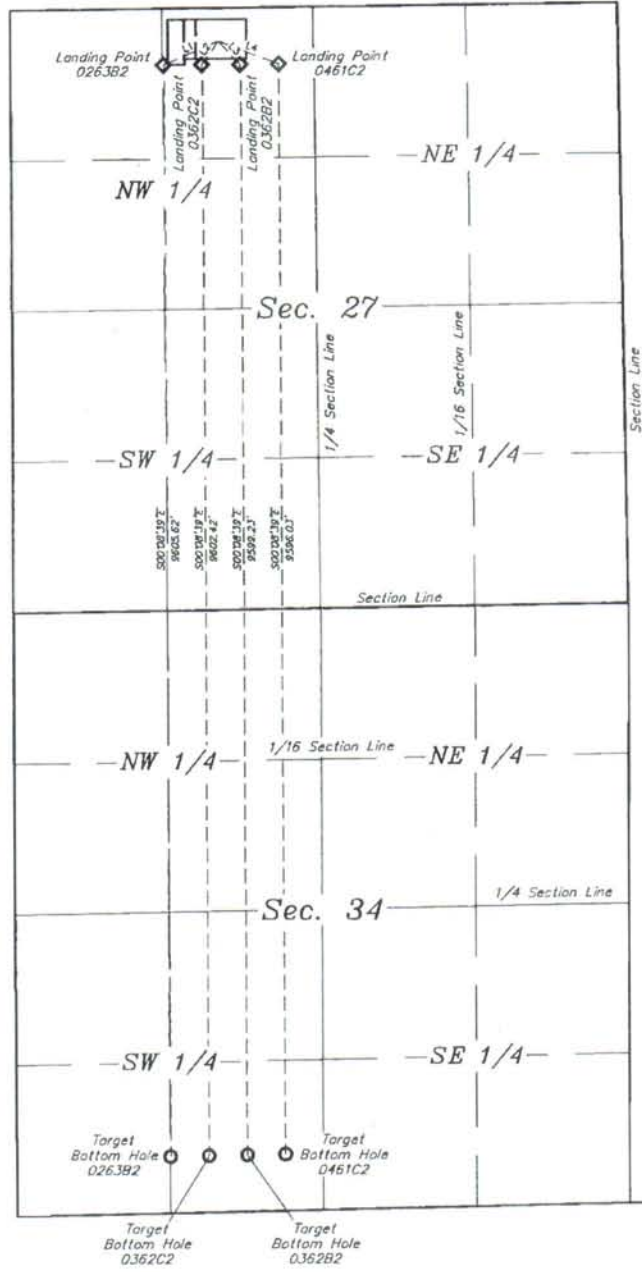
Title: Senior Vice President-General Counsel

LEGEND:

- ◆ = LANDING POINT.
- = TARGET BOTTOM HOLE.



LINE TABLE		
LINE	DIRECTION	LENGTH
L1	S66°12'35"W	505.42'
L2	S34°32'38"W	244.19'
L3	S43°04'21"E	271.63'
L4	S68°59'22"E	545.78'



T5N
T4N

BILL BARRETT CORPORATION

ANSCHUTZ STATE FED 5-62-27 34 NENW PAD
#5-62-27-0263B2, 0362C2, 0362B2 & 0461C2
NE 1/4 NW 1/4, SECTION 27, T5N, R62W, 6th P.M.
WELD COUNTY, COLORADO

DRAWN BY JS	DATE DRAWN: 08-01-14
SCALE 1" = 1000'	REVISED 07-30-15 K.B.

MULTI-WELL PLAN

FIGURE #5



UELS, LLC
Corporate Office • 85 South 200 East
Vernal, UT 84078 • (435) 789-1017