



**COMPANY DETAILS: BILL BARRETT CORP**

Calculation Method: Minimum Curvature  
 Error System: ISCWSA  
 Scan Method: Closest Approach 3D  
 Error Surface: Elliptical Conic  
 Warning Method: Error Ratio

**REFERENCE INFORMATION**

Co-ordinate (N/E) Reference: Well Ruh 6-62-11-0659B2, True North  
 Vertical (TVD) Reference: KB @ 4763.0ft (Original Well Elev)  
 Section (VS) Reference: Slot - (0.0N, 0.0E)  
 Measured Depth Reference: KB @ 4763.0ft (Original Well Elev)  
 Calculation Method: Minimum Curvature

**WELL DETAILS: Ruh 6-62-11-0659B2**

+N/-S +E/-W Northing Easting Latitude Longitude  
 0.0 0.0 1430277.94 3337454.1940° 30' 29.430 N 104° 17' 10.990 W

**WELLBORE TARGET DETAILS**

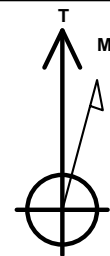
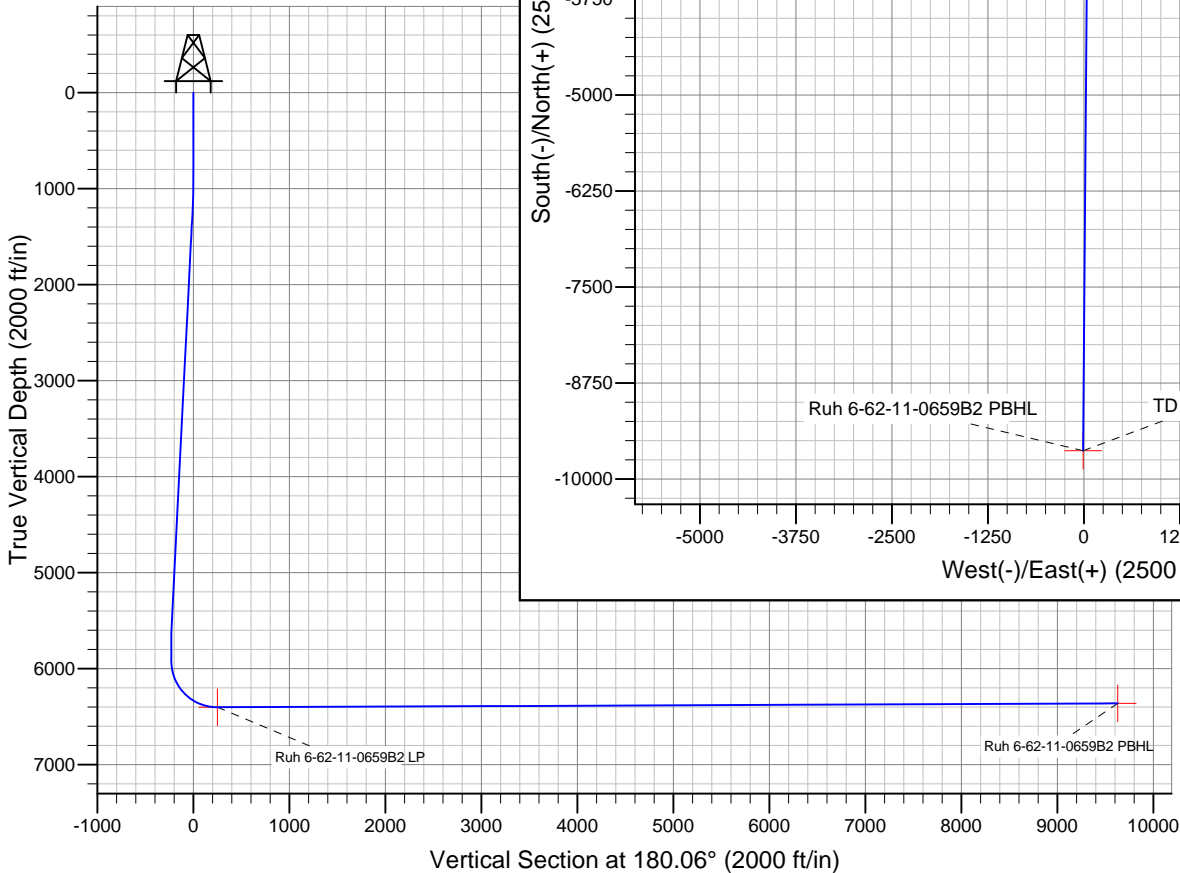
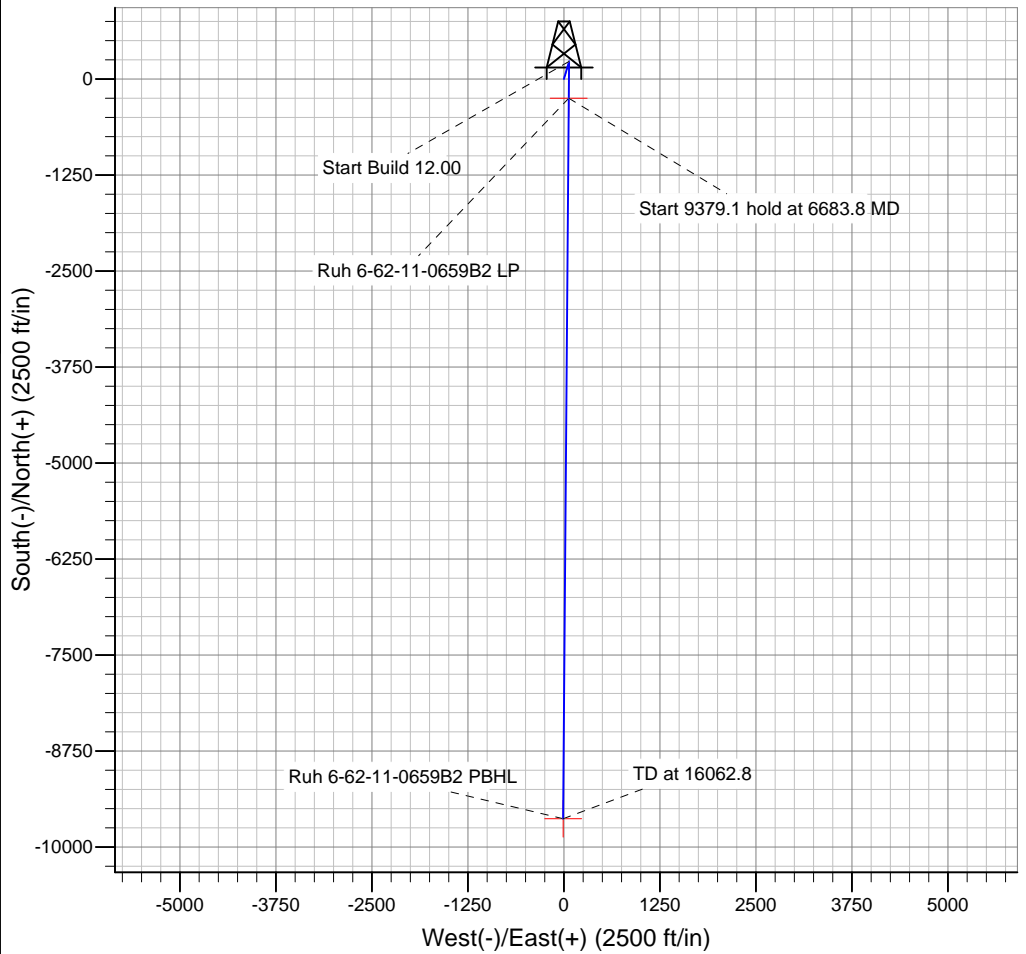
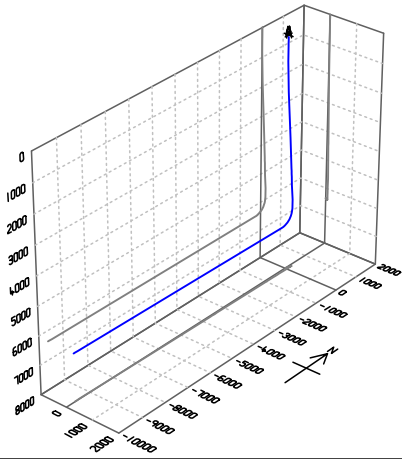
Name	TVD	+N/-S	+E/-W	Shape
Ruh 6-62-11-0659B2 PBHL	6363.0	-9629.7	-10.0	Point
Ruh 6-62-11-0659B2 LP	6403.0	-251.0	63.4	Point

**PROJECT DETAILS: WELD COUNTY, COLORADO**

Geodetic System: US State Plane 1983  
 Datum: North American Datum 1983  
 Ellipsoid: GRS 1980  
 Zone: Colorado Northern Zone

**SECTION DETAILS**

Sec	MD	Inc	Azi	TVD	+N/-S	+E/-W	DLeg	TFace	VSec	Target
1	0.0	0.00	0.00	0.0	0.0	0.0	0.00	0.00	0.0	
2	1000.0	0.00	0.00	1000.0	0.0	0.0	0.00	0.00	0.0	
3	1150.6	3.01	16.38	1150.6	3.8	1.1	2.00	16.38	-3.8	
4	5531.1	3.01	16.38	5525.0	224.7	66.0	0.00	0.00	-224.8	
5	5681.7	0.00	180.45	5675.5	228.5	67.2	2.00	180.00	-228.6	
6	5931.7	0.00	180.45	5925.5	228.5	67.2	0.00	180.45	-228.6	
7	6683.8	90.24	180.45	6403.0	-251.0	63.4	12.00	180.45	250.9	Ruh 6-62-11-0659B2 LP
8	16062.8	90.24	180.45	6363.0	-9629.7	-10.0	0.00	0.00	9629.7	Ruh 6-62-11-0659B2 PBHL



Azimuths to True North  
 Magnetic North: 8.13°

Magnetic Field  
 Strength: 52863.7snT  
 Dip Angle: 67.09°  
 Date: 12/31/2014  
 Model: IGRF2010

# Bill Barrett Corp

## Planning Report

<b>Database:</b>	Compass	<b>Local Co-ordinate Reference:</b>	Well Ruh 6-62-11-0659B2
<b>Company:</b>	BILL BARRETT CORP	<b>TVD Reference:</b>	KB @ 4763.0ft (Original Well Elev)
<b>Project:</b>	WELD COUNTY, COLORADO	<b>MD Reference:</b>	KB @ 4763.0ft (Original Well Elev)
<b>Site:</b>	Ruh 6-62-11_14 NWNE Pad	<b>North Reference:</b>	True
<b>Well:</b>	Ruh 6-62-11-0659B2	<b>Survey Calculation Method:</b>	Minimum Curvature
<b>Wellbore:</b>	Wellbore #1		
<b>Design:</b>	Design #1		

<b>Project</b>	WELD COUNTY, COLORADO		
<b>Map System:</b>	US State Plane 1983	<b>System Datum:</b>	Mean Sea Level
<b>Geo Datum:</b>	North American Datum 1983		
<b>Map Zone:</b>	Colorado Northern Zone		

<b>Site</b>	Ruh 6-62-11_14 NWNE Pad				
<b>Site Position:</b>		<b>Northing:</b>	1,430,278.63ft	<b>Latitude:</b>	40° 30' 29.441 N
<b>From:</b>	Lat/Long	<b>Easting:</b>	3,337,424.14ft	<b>Longitude:</b>	104° 17' 11.378 W
<b>Position Uncertainty:</b>	0.0 ft	<b>Slot Radius:</b>	"	<b>Grid Convergence:</b>	0.78 °

<b>Well</b>	Ruh 6-62-11-0659B2					
<b>Well Position</b>	<b>+N-S</b>	-1.1 ft	<b>Northing:</b>	1,430,277.94 ft	<b>Latitude:</b>	40° 30' 29.430 N
	<b>+E-W</b>	30.0 ft	<b>Easting:</b>	3,337,454.19 ft	<b>Longitude:</b>	104° 17' 10.990 W
<b>Position Uncertainty</b>		0.0 ft	<b>Wellhead Elevation:</b>	ft	<b>Ground Level:</b>	4,747.0 ft

<b>Wellbore</b>	Wellbore #1				
<b>Magnetics</b>	<b>Model Name</b>	<b>Sample Date</b>	<b>Declination (°)</b>	<b>Dip Angle (°)</b>	<b>Field Strength (nT)</b>
	IGRF2010	12/31/2014	8.13	67.09	52,864

<b>Design</b>	Design #1			
<b>Audit Notes:</b>				
<b>Version:</b>	<b>Phase:</b>	PLAN	<b>Tie On Depth:</b>	0.0
<b>Vertical Section:</b>	<b>Depth From (TVD) (ft)</b>	<b>+N-S (ft)</b>	<b>+E-W (ft)</b>	<b>Direction (°)</b>
	0.0	0.0	0.0	180.06

<b>Plan Sections</b>										
Measured Depth (ft)	Inclination (°)	Azimuth (°)	Vertical Depth (ft)	+N-S (ft)	+E-W (ft)	Dogleg Rate (°/100ft)	Build Rate (°/100ft)	Turn Rate (°/100ft)	TFO (°)	Target
0.0	0.00	0.00	0.0	0.0	0.0	0.00	0.00	0.00	0.00	
1,000.0	0.00	0.00	1,000.0	0.0	0.0	0.00	0.00	0.00	0.00	
1,150.6	3.01	16.38	1,150.6	3.8	1.1	2.00	2.00	0.00	16.38	
5,531.1	3.01	16.38	5,525.0	224.7	66.0	0.00	0.00	0.00	0.00	
5,681.7	0.00	180.45	5,675.5	228.5	67.2	2.00	-2.00	0.00	180.00	
5,931.7	0.00	180.45	5,925.5	228.5	67.2	0.00	0.00	0.00	180.45	
6,683.8	90.24	180.45	6,403.0	-251.0	63.4	12.00	12.00	0.00	180.45	Ruh 6-62-11-0659B
16,062.8	90.24	180.45	6,363.0	-9,629.7	-10.0	0.00	0.00	0.00	0.00	Ruh 6-62-11-0659B

# Bill Barrett Corp

## Planning Report

<b>Database:</b>	Compass	<b>Local Co-ordinate Reference:</b>	Well Ruh 6-62-11-0659B2
<b>Company:</b>	BILL BARRETT CORP	<b>TVD Reference:</b>	KB @ 4763.0ft (Original Well Elev)
<b>Project:</b>	WELD COUNTY, COLORADO	<b>MD Reference:</b>	KB @ 4763.0ft (Original Well Elev)
<b>Site:</b>	Ruh 6-62-11_14 NWNE Pad	<b>North Reference:</b>	True
<b>Well:</b>	Ruh 6-62-11-0659B2	<b>Survey Calculation Method:</b>	Minimum Curvature
<b>Wellbore:</b>	Wellbore #1		
<b>Design:</b>	Design #1		

Planned Survey									
Measured Depth (ft)	Inclination (°)	Azimuth (°)	Vertical Depth (ft)	+N/-S (ft)	+E/-W (ft)	Vertical Section (ft)	Dogleg Rate (°/100ft)	Build Rate (°/100ft)	Turn Rate (°/100ft)
0.0	0.00	0.00	0.0	0.0	0.0	0.0	0.00	0.00	0.00
100.0	0.00	0.00	100.0	0.0	0.0	0.0	0.00	0.00	0.00
200.0	0.00	0.00	200.0	0.0	0.0	0.0	0.00	0.00	0.00
300.0	0.00	0.00	300.0	0.0	0.0	0.0	0.00	0.00	0.00
400.0	0.00	0.00	400.0	0.0	0.0	0.0	0.00	0.00	0.00
500.0	0.00	0.00	500.0	0.0	0.0	0.0	0.00	0.00	0.00
600.0	0.00	0.00	600.0	0.0	0.0	0.0	0.00	0.00	0.00
700.0	0.00	0.00	700.0	0.0	0.0	0.0	0.00	0.00	0.00
800.0	0.00	0.00	800.0	0.0	0.0	0.0	0.00	0.00	0.00
900.0	0.00	0.00	900.0	0.0	0.0	0.0	0.00	0.00	0.00
1,000.0	0.00	0.00	1,000.0	0.0	0.0	0.0	0.00	0.00	0.00
1,100.0	2.00	16.38	1,100.0	1.7	0.5	-1.7	2.00	2.00	0.00
1,150.6	3.01	16.38	1,150.6	3.8	1.1	-3.8	2.00	2.00	0.00
1,200.0	3.01	16.38	1,199.9	6.3	1.8	-6.3	0.00	0.00	0.00
1,300.0	3.01	16.38	1,299.7	11.3	3.3	-11.3	0.00	0.00	0.00
1,400.0	3.01	16.38	1,399.6	16.4	4.8	-16.4	0.00	0.00	0.00
1,500.0	3.01	16.38	1,499.4	21.4	6.3	-21.4	0.00	0.00	0.00
1,600.0	3.01	16.38	1,599.3	26.5	7.8	-26.5	0.00	0.00	0.00
1,700.0	3.01	16.38	1,699.2	31.5	9.3	-31.5	0.00	0.00	0.00
1,800.0	3.01	16.38	1,799.0	36.5	10.7	-36.6	0.00	0.00	0.00
1,900.0	3.01	16.38	1,898.9	41.6	12.2	-41.6	0.00	0.00	0.00
2,000.0	3.01	16.38	1,998.8	46.6	13.7	-46.6	0.00	0.00	0.00
2,100.0	3.01	16.38	2,098.6	51.7	15.2	-51.7	0.00	0.00	0.00
2,200.0	3.01	16.38	2,198.5	56.7	16.7	-56.7	0.00	0.00	0.00
2,300.0	3.01	16.38	2,298.3	61.8	18.2	-61.8	0.00	0.00	0.00
2,400.0	3.01	16.38	2,398.2	66.8	19.6	-66.8	0.00	0.00	0.00
2,500.0	3.01	16.38	2,498.1	71.8	21.1	-71.9	0.00	0.00	0.00
2,600.0	3.01	16.38	2,597.9	76.9	22.6	-76.9	0.00	0.00	0.00
2,700.0	3.01	16.38	2,697.8	81.9	24.1	-82.0	0.00	0.00	0.00
2,800.0	3.01	16.38	2,797.7	87.0	25.6	-87.0	0.00	0.00	0.00
2,900.0	3.01	16.38	2,897.5	92.0	27.0	-92.0	0.00	0.00	0.00
3,000.0	3.01	16.38	2,997.4	97.1	28.5	-97.1	0.00	0.00	0.00
3,100.0	3.01	16.38	3,097.2	102.1	30.0	-102.1	0.00	0.00	0.00
3,200.0	3.01	16.38	3,197.1	107.1	31.5	-107.2	0.00	0.00	0.00
3,300.0	3.01	16.38	3,297.0	112.2	33.0	-112.2	0.00	0.00	0.00
3,400.0	3.01	16.38	3,396.8	117.2	34.5	-117.3	0.00	0.00	0.00
3,500.0	3.01	16.38	3,496.7	122.3	35.9	-122.3	0.00	0.00	0.00
3,600.0	3.01	16.38	3,596.5	127.3	37.4	-127.4	0.00	0.00	0.00
3,700.0	3.01	16.38	3,696.4	132.4	38.9	-132.4	0.00	0.00	0.00
3,800.0	3.01	16.38	3,796.3	137.4	40.4	-137.4	0.00	0.00	0.00
3,900.0	3.01	16.38	3,896.1	142.4	41.9	-142.5	0.00	0.00	0.00
4,000.0	3.01	16.38	3,996.0	147.5	43.3	-147.5	0.00	0.00	0.00
4,100.0	3.01	16.38	4,095.9	152.5	44.8	-152.6	0.00	0.00	0.00
4,200.0	3.01	16.38	4,195.7	157.6	46.3	-157.6	0.00	0.00	0.00
4,300.0	3.01	16.38	4,295.6	162.6	47.8	-162.7	0.00	0.00	0.00
4,400.0	3.01	16.38	4,395.4	167.7	49.3	-167.7	0.00	0.00	0.00
4,500.0	3.01	16.38	4,495.3	172.7	50.8	-172.7	0.00	0.00	0.00
4,600.0	3.01	16.38	4,595.2	177.7	52.2	-177.8	0.00	0.00	0.00
4,700.0	3.01	16.38	4,695.0	182.8	53.7	-182.8	0.00	0.00	0.00
4,800.0	3.01	16.38	4,794.9	187.8	55.2	-187.9	0.00	0.00	0.00
4,900.0	3.01	16.38	4,894.7	192.9	56.7	-192.9	0.00	0.00	0.00
5,000.0	3.01	16.38	4,994.6	197.9	58.2	-198.0	0.00	0.00	0.00
5,100.0	3.01	16.38	5,094.5	203.0	59.6	-203.0	0.00	0.00	0.00
5,200.0	3.01	16.38	5,194.3	208.0	61.1	-208.1	0.00	0.00	0.00

**Bill Barrett Corp**  
Planning Report

<b>Database:</b>	Compass	<b>Local Co-ordinate Reference:</b>	Well Ruh 6-62-11-0659B2
<b>Company:</b>	BILL BARRETT CORP	<b>TVD Reference:</b>	KB @ 4763.0ft (Original Well Elev)
<b>Project:</b>	WELD COUNTY, COLORADO	<b>MD Reference:</b>	KB @ 4763.0ft (Original Well Elev)
<b>Site:</b>	Ruh 6-62-11_14 NWNE Pad	<b>North Reference:</b>	True
<b>Well:</b>	Ruh 6-62-11-0659B2	<b>Survey Calculation Method:</b>	Minimum Curvature
<b>Wellbore:</b>	Wellbore #1		
<b>Design:</b>	Design #1		

Planned Survey										
Measured Depth (ft)	Inclination (°)	Azimuth (°)	Vertical Depth (ft)	+N/-S (ft)	+E/-W (ft)	Vertical Section (ft)	Dogleg Rate (°/100ft)	Build Rate (°/100ft)	Turn Rate (°/100ft)	
5,300.0	3.01	16.38	5,294.2	213.0	62.6	-213.1	0.00	0.00	0.00	
5,400.0	3.01	16.38	5,394.1	218.1	64.1	-218.1	0.00	0.00	0.00	
5,500.0	3.01	16.38	5,493.9	223.1	65.6	-223.2	0.00	0.00	0.00	
5,531.1	3.01	16.38	5,525.0	224.7	66.0	-224.8	0.00	0.00	0.00	
5,600.0	1.63	16.38	5,593.8	227.4	66.8	-227.4	2.00	-2.00	0.00	
5,681.7	0.00	180.45	5,675.5	228.5	67.2	-228.6	2.00	-2.00	0.00	
5,700.0	0.00	180.45	5,693.8	228.5	67.2	-228.6	0.00	0.00	0.00	
5,800.0	0.00	180.45	5,793.8	228.5	67.2	-228.6	0.00	0.00	0.00	
5,900.0	0.00	180.45	5,893.8	228.5	67.2	-228.6	0.00	0.00	0.00	
5,931.7	0.00	180.45	5,925.5	228.5	67.2	-228.6	0.00	0.00	0.00	
6,000.0	8.19	180.45	5,993.6	223.6	67.1	-223.7	12.00	12.00	0.00	
6,100.0	20.19	180.45	6,090.3	199.1	66.9	-199.2	12.00	12.00	0.00	
6,200.0	32.19	180.45	6,179.9	155.1	66.6	-155.2	12.00	12.00	0.00	
6,300.0	44.19	180.45	6,258.4	93.4	66.1	-93.4	12.00	12.00	0.00	
6,400.0	56.19	180.45	6,322.3	16.7	65.5	-16.8	12.00	12.00	0.00	
6,500.0	68.19	180.45	6,368.8	-71.6	64.8	71.5	12.00	12.00	0.00	
6,600.0	80.19	180.45	6,396.0	-167.6	64.1	167.6	12.00	12.00	0.00	
6,683.8	90.24	180.45	6,403.0	-251.0	63.4	250.9	12.00	12.00	0.00	
<b>Ruh 6-62-11-0659B2 LP</b>										
6,700.0	90.24	180.45	6,402.9	-267.2	63.3	267.2	0.00	0.00	0.00	
6,800.0	90.24	180.45	6,402.5	-367.2	62.5	367.2	0.00	0.00	0.00	
6,900.0	90.24	180.45	6,402.1	-467.2	61.7	467.2	0.00	0.00	0.00	
7,000.0	90.24	180.45	6,401.7	-567.2	60.9	567.2	0.00	0.00	0.00	
7,100.0	90.24	180.45	6,401.2	-667.2	60.1	667.2	0.00	0.00	0.00	
7,200.0	90.24	180.45	6,400.8	-767.2	59.4	767.1	0.00	0.00	0.00	
7,300.0	90.24	180.45	6,400.4	-867.2	58.6	867.1	0.00	0.00	0.00	
7,400.0	90.24	180.45	6,399.9	-967.2	57.8	967.1	0.00	0.00	0.00	
7,500.0	90.24	180.45	6,399.5	-1,067.2	57.0	1,067.1	0.00	0.00	0.00	
7,600.0	90.24	180.45	6,399.1	-1,167.2	56.2	1,167.1	0.00	0.00	0.00	
7,700.0	90.24	180.45	6,398.7	-1,267.2	55.4	1,267.1	0.00	0.00	0.00	
7,800.0	90.24	180.45	6,398.2	-1,367.2	54.7	1,367.1	0.00	0.00	0.00	
7,900.0	90.24	180.45	6,397.8	-1,467.2	53.9	1,467.1	0.00	0.00	0.00	
8,000.0	90.24	180.45	6,397.4	-1,567.2	53.1	1,567.1	0.00	0.00	0.00	
8,100.0	90.24	180.45	6,397.0	-1,667.2	52.3	1,667.1	0.00	0.00	0.00	
8,200.0	90.24	180.45	6,396.5	-1,767.2	51.5	1,767.1	0.00	0.00	0.00	
8,300.0	90.24	180.45	6,396.1	-1,867.2	50.7	1,867.1	0.00	0.00	0.00	
8,400.0	90.24	180.45	6,395.7	-1,967.2	50.0	1,967.1	0.00	0.00	0.00	
8,500.0	90.24	180.45	6,395.3	-2,067.2	49.2	2,067.1	0.00	0.00	0.00	
8,600.0	90.24	180.45	6,394.8	-2,167.2	48.4	2,167.1	0.00	0.00	0.00	
8,700.0	90.24	180.45	6,394.4	-2,267.1	47.6	2,267.1	0.00	0.00	0.00	
8,800.0	90.24	180.45	6,394.0	-2,367.1	46.8	2,367.1	0.00	0.00	0.00	
8,900.0	90.24	180.45	6,393.5	-2,467.1	46.1	2,467.1	0.00	0.00	0.00	
9,000.0	90.24	180.45	6,393.1	-2,567.1	45.3	2,567.1	0.00	0.00	0.00	
9,100.0	90.24	180.45	6,392.7	-2,667.1	44.5	2,667.1	0.00	0.00	0.00	
9,200.0	90.24	180.45	6,392.3	-2,767.1	43.7	2,767.1	0.00	0.00	0.00	
9,300.0	90.24	180.45	6,391.8	-2,867.1	42.9	2,867.1	0.00	0.00	0.00	
9,400.0	90.24	180.45	6,391.4	-2,967.1	42.1	2,967.1	0.00	0.00	0.00	
9,500.0	90.24	180.45	6,391.0	-3,067.1	41.4	3,067.1	0.00	0.00	0.00	
9,600.0	90.24	180.45	6,390.6	-3,167.1	40.6	3,167.1	0.00	0.00	0.00	
9,700.0	90.24	180.45	6,390.1	-3,267.1	39.8	3,267.1	0.00	0.00	0.00	
9,800.0	90.24	180.45	6,389.7	-3,367.1	39.0	3,367.1	0.00	0.00	0.00	
9,900.0	90.24	180.45	6,389.3	-3,467.1	38.2	3,467.1	0.00	0.00	0.00	
10,000.0	90.24	180.45	6,388.9	-3,567.1	37.4	3,567.1	0.00	0.00	0.00	

# Bill Barrett Corp

## Planning Report

<b>Database:</b>	Compass	<b>Local Co-ordinate Reference:</b>	Well Ruh 6-62-11-0659B2
<b>Company:</b>	BILL BARRETT CORP	<b>TVD Reference:</b>	KB @ 4763.0ft (Original Well Elev)
<b>Project:</b>	WELD COUNTY, COLORADO	<b>MD Reference:</b>	KB @ 4763.0ft (Original Well Elev)
<b>Site:</b>	Ruh 6-62-11_14 NWNE Pad	<b>North Reference:</b>	True
<b>Well:</b>	Ruh 6-62-11-0659B2	<b>Survey Calculation Method:</b>	Minimum Curvature
<b>Wellbore:</b>	Wellbore #1		
<b>Design:</b>	Design #1		

Planned Survey										
Measured Depth (ft)	Inclination (°)	Azimuth (°)	Vertical Depth (ft)	+N/-S (ft)	+E/-W (ft)	Vertical Section (ft)	Dogleg Rate (°/100ft)	Build Rate (°/100ft)	Turn Rate (°/100ft)	
10,100.0	90.24	180.45	6,388.4	-3,667.1	36.7	3,667.1	0.00	0.00	0.00	
10,200.0	90.24	180.45	6,388.0	-3,767.1	35.9	3,767.1	0.00	0.00	0.00	
10,300.0	90.24	180.45	6,387.6	-3,867.1	35.1	3,867.0	0.00	0.00	0.00	
10,400.0	90.24	180.45	6,387.2	-3,967.1	34.3	3,967.0	0.00	0.00	0.00	
10,500.0	90.24	180.45	6,386.7	-4,067.1	33.5	4,067.0	0.00	0.00	0.00	
10,600.0	90.24	180.45	6,386.3	-4,167.1	32.7	4,167.0	0.00	0.00	0.00	
10,700.0	90.24	180.45	6,385.9	-4,267.1	32.0	4,267.0	0.00	0.00	0.00	
10,800.0	90.24	180.45	6,385.4	-4,367.1	31.2	4,367.0	0.00	0.00	0.00	
10,900.0	90.24	180.45	6,385.0	-4,467.1	30.4	4,467.0	0.00	0.00	0.00	
11,000.0	90.24	180.45	6,384.6	-4,567.1	29.6	4,567.0	0.00	0.00	0.00	
11,100.0	90.24	180.45	6,384.2	-4,667.1	28.8	4,667.0	0.00	0.00	0.00	
11,200.0	90.24	180.45	6,383.7	-4,767.1	28.0	4,767.0	0.00	0.00	0.00	
11,300.0	90.24	180.45	6,383.3	-4,867.0	27.3	4,867.0	0.00	0.00	0.00	
11,400.0	90.24	180.45	6,382.9	-4,967.0	26.5	4,967.0	0.00	0.00	0.00	
11,500.0	90.24	180.45	6,382.5	-5,067.0	25.7	5,067.0	0.00	0.00	0.00	
11,600.0	90.24	180.45	6,382.0	-5,167.0	24.9	5,167.0	0.00	0.00	0.00	
11,700.0	90.24	180.45	6,381.6	-5,267.0	24.1	5,267.0	0.00	0.00	0.00	
11,800.0	90.24	180.45	6,381.2	-5,367.0	23.4	5,367.0	0.00	0.00	0.00	
11,900.0	90.24	180.45	6,380.8	-5,467.0	22.6	5,467.0	0.00	0.00	0.00	
12,000.0	90.24	180.45	6,380.3	-5,567.0	21.8	5,567.0	0.00	0.00	0.00	
12,100.0	90.24	180.45	6,379.9	-5,667.0	21.0	5,667.0	0.00	0.00	0.00	
12,200.0	90.24	180.45	6,379.5	-5,767.0	20.2	5,767.0	0.00	0.00	0.00	
12,300.0	90.24	180.45	6,379.0	-5,867.0	19.4	5,867.0	0.00	0.00	0.00	
12,400.0	90.24	180.45	6,378.6	-5,967.0	18.7	5,967.0	0.00	0.00	0.00	
12,500.0	90.24	180.45	6,378.2	-6,067.0	17.9	6,067.0	0.00	0.00	0.00	
12,600.0	90.24	180.45	6,377.8	-6,167.0	17.1	6,167.0	0.00	0.00	0.00	
12,700.0	90.24	180.45	6,377.3	-6,267.0	16.3	6,267.0	0.00	0.00	0.00	
12,800.0	90.24	180.45	6,376.9	-6,367.0	15.5	6,367.0	0.00	0.00	0.00	
12,900.0	90.24	180.45	6,376.5	-6,467.0	14.7	6,467.0	0.00	0.00	0.00	
13,000.0	90.24	180.45	6,376.1	-6,567.0	14.0	6,567.0	0.00	0.00	0.00	
13,100.0	90.24	180.45	6,375.6	-6,667.0	13.2	6,667.0	0.00	0.00	0.00	
13,200.0	90.24	180.45	6,375.2	-6,767.0	12.4	6,767.0	0.00	0.00	0.00	
13,300.0	90.24	180.45	6,374.8	-6,867.0	11.6	6,867.0	0.00	0.00	0.00	
13,400.0	90.24	180.45	6,374.4	-6,967.0	10.8	6,966.9	0.00	0.00	0.00	
13,500.0	90.24	180.45	6,373.9	-7,067.0	10.0	7,066.9	0.00	0.00	0.00	
13,600.0	90.24	180.45	6,373.5	-7,167.0	9.3	7,166.9	0.00	0.00	0.00	
13,700.0	90.24	180.45	6,373.1	-7,267.0	8.5	7,266.9	0.00	0.00	0.00	
13,800.0	90.24	180.45	6,372.7	-7,366.9	7.7	7,366.9	0.00	0.00	0.00	
13,900.0	90.24	180.45	6,372.2	-7,466.9	6.9	7,466.9	0.00	0.00	0.00	
14,000.0	90.24	180.45	6,371.8	-7,566.9	6.1	7,566.9	0.00	0.00	0.00	
14,100.0	90.24	180.45	6,371.4	-7,666.9	5.3	7,666.9	0.00	0.00	0.00	
14,200.0	90.24	180.45	6,370.9	-7,766.9	4.6	7,766.9	0.00	0.00	0.00	
14,300.0	90.24	180.45	6,370.5	-7,866.9	3.8	7,866.9	0.00	0.00	0.00	
14,400.0	90.24	180.45	6,370.1	-7,966.9	3.0	7,966.9	0.00	0.00	0.00	
14,500.0	90.24	180.45	6,369.7	-8,066.9	2.2	8,066.9	0.00	0.00	0.00	
14,600.0	90.24	180.45	6,369.2	-8,166.9	1.4	8,166.9	0.00	0.00	0.00	
14,700.0	90.24	180.45	6,368.8	-8,266.9	0.7	8,266.9	0.00	0.00	0.00	
14,800.0	90.24	180.45	6,368.4	-8,366.9	-0.1	8,366.9	0.00	0.00	0.00	
14,900.0	90.24	180.45	6,368.0	-8,466.9	-0.9	8,466.9	0.00	0.00	0.00	
15,000.0	90.24	180.45	6,367.5	-8,566.9	-1.7	8,566.9	0.00	0.00	0.00	
15,100.0	90.24	180.45	6,367.1	-8,666.9	-2.5	8,666.9	0.00	0.00	0.00	
15,200.0	90.24	180.45	6,366.7	-8,766.9	-3.3	8,766.9	0.00	0.00	0.00	
15,300.0	90.24	180.45	6,366.3	-8,866.9	-4.0	8,866.9	0.00	0.00	0.00	
15,400.0	90.24	180.45	6,365.8	-8,966.9	-4.8	8,966.9	0.00	0.00	0.00	

# Bill Barrett Corp

## Planning Report

<b>Database:</b>	Compass	<b>Local Co-ordinate Reference:</b>	Well Ruh 6-62-11-0659B2
<b>Company:</b>	BILL BARRETT CORP	<b>TVD Reference:</b>	KB @ 4763.0ft (Original Well Elev)
<b>Project:</b>	WELD COUNTY, COLORADO	<b>MD Reference:</b>	KB @ 4763.0ft (Original Well Elev)
<b>Site:</b>	Ruh 6-62-11_14 NWNE Pad	<b>North Reference:</b>	True
<b>Well:</b>	Ruh 6-62-11-0659B2	<b>Survey Calculation Method:</b>	Minimum Curvature
<b>Wellbore:</b>	Wellbore #1		
<b>Design:</b>	Design #1		

Planned Survey										
Measured Depth (ft)	Inclination (°)	Azimuth (°)	Vertical Depth (ft)	+N/-S (ft)	+E/-W (ft)	Vertical Section (ft)	Dogleg Rate (°/100ft)	Build Rate (°/100ft)	Turn Rate (°/100ft)	
15,500.0	90.24	180.45	6,365.4	-9,066.9	-5.6	9,066.9	0.00	0.00	0.00	
15,600.0	90.24	180.45	6,365.0	-9,166.9	-6.4	9,166.9	0.00	0.00	0.00	
15,700.0	90.24	180.45	6,364.5	-9,266.9	-7.2	9,266.9	0.00	0.00	0.00	
15,800.0	90.24	180.45	6,364.1	-9,366.9	-8.0	9,366.9	0.00	0.00	0.00	
15,900.0	90.24	180.45	6,363.7	-9,466.9	-8.7	9,466.9	0.00	0.00	0.00	
16,000.0	90.24	180.45	6,363.3	-9,566.9	-9.5	9,566.9	0.00	0.00	0.00	
16,062.8	90.24	180.45	6,363.0	-9,629.7	-10.0	9,629.7	0.00	0.00	0.00	
<b>Ruh 6-62-11-0659B2 PBHL</b>										