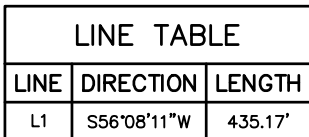


*T6N, R62W, 6th P.M.*

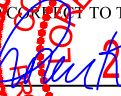
- 1998 Alum. Cap,  
#11648, 0.5' Below  
Road Surface  
Lat: 40.509056°  
Long: 104.298617°



A vertical scale bar with markings at 1000', 500', 0', and 1000'.

<b>NAD 83 (TARGET BOTTOM HOLE)</b>	<b>NAD 83 (LANDING POINT)</b>	<b>NAD 83 (SURFACE LOCATION)</b>
LATITUDE = 40°28'54.20" (40.481722)	LATITUDE = 40°30'27.04" (40.507511)	LATITUDE = 40°30'29.44" (40.508178)
LONGITUDE = 104°17'16.81" (104.288003)	LONGITUDE = 104°17'15.86" (104.287739)	LONGITUDE = 104°17'11.19" (104.286442)
<b>NAD 27 (TARGET BOTTOM HOLE)</b>	<b>NAD 27 (LANDING POINT)</b>	<b>NAD 27 (SURFACE LOCATION)</b>
LATITUDE = 40°28'54.27" (40.481742)	LATITUDE = 40°30'27.10" (40.507528)	LATITUDE = 40°30'29.50" (40.508194)
LONGITUDE = 104°17'14.99" (104.287497)	LONGITUDE = 104°17'14.04" (104.287233)	LONGITUDE = 104°17'09.37" (104.285936)
<b>STATE PLANE NAD 83 (CO. NORTH)</b>	<b>STATE PLANE NAD 83 (CO. NORTH)</b>	<b>STATE PLANE NAD 83 (CO. NORTH)</b>
N: 1420636.30 E: 3337135.98	N: 1430030.99 E: 3337080.98	N: 1430278.44 E: 3337438.82
<b>STATE PLANE NAD 27 (CO. NORTH)</b>	<b>STATE PLANE NAD 27 (CO. NORTH)</b>	<b>STATE PLANE NAD 27 (CO. NORTH)</b>
N: 420637.08 E: 2337285.66	N: 430031.34 E: 2337230.57	N: 430278.98 E: 2337588.41

THIS IS TO CERTIFY THAT THE ABOVE PLAN WAS PREPARED FROM FIELD NOTES OF ACTUAL SURVEYS MADE BY ME OR UNDER MY SUPERVISION, AND THAT THE SAME ARE TRUE AND CORRECT TO THE BEST OF MY KNOWLEDGE AND BELIEF.

TIFICATION  
 ABOVE LAND WAS PREPARED FROM FIELD  
 DATA MEASURED UNDER MY SUPERVISION  
 AND SUBJECT TO THE BEST OF MY  

  
 REGISTERED LAND SURVEYOR  
 REGISTRATION NO. 28285  
 STATE OF COLORADO

SPOT ELEVATION LOCATED AT THE NORTHEAST CORNER OF SECTION 24, T5N, R62W, 6th. P.M. TAKEN FROM THE POINT OF ROCKS, QUADRANGLE, COLORADO, WELD COUNTY, 7.5 MINUTE QUAD (TOPOGRAPHIC MAP) PUBLISHED BY THE UNITED STATES DEPARTMENT OF THE INTERIOR, GEOLOGICAL SURVEY. SAID ELEVATION IS MARKED AS BEING 4530 FEET.



**UELS, LLC**  
Corporate Office \* 85 South 200 East  
Vernal, UT 84078 \* (435) 789-1017



**NW 1/4 NE 1/4, SECTION 11, T6N, R62W, 6th P.M.  
WELD COUNTY, COLORADO**

SURVEYED BY	DATE	REVISED BY	DATE
DAVE SWANSON, C.J.	01-16-14	M.F.D.	01-06-16
DRAWN BY	DATE		
J.W.	01-25-14		

## WELL LOCATION PLAT