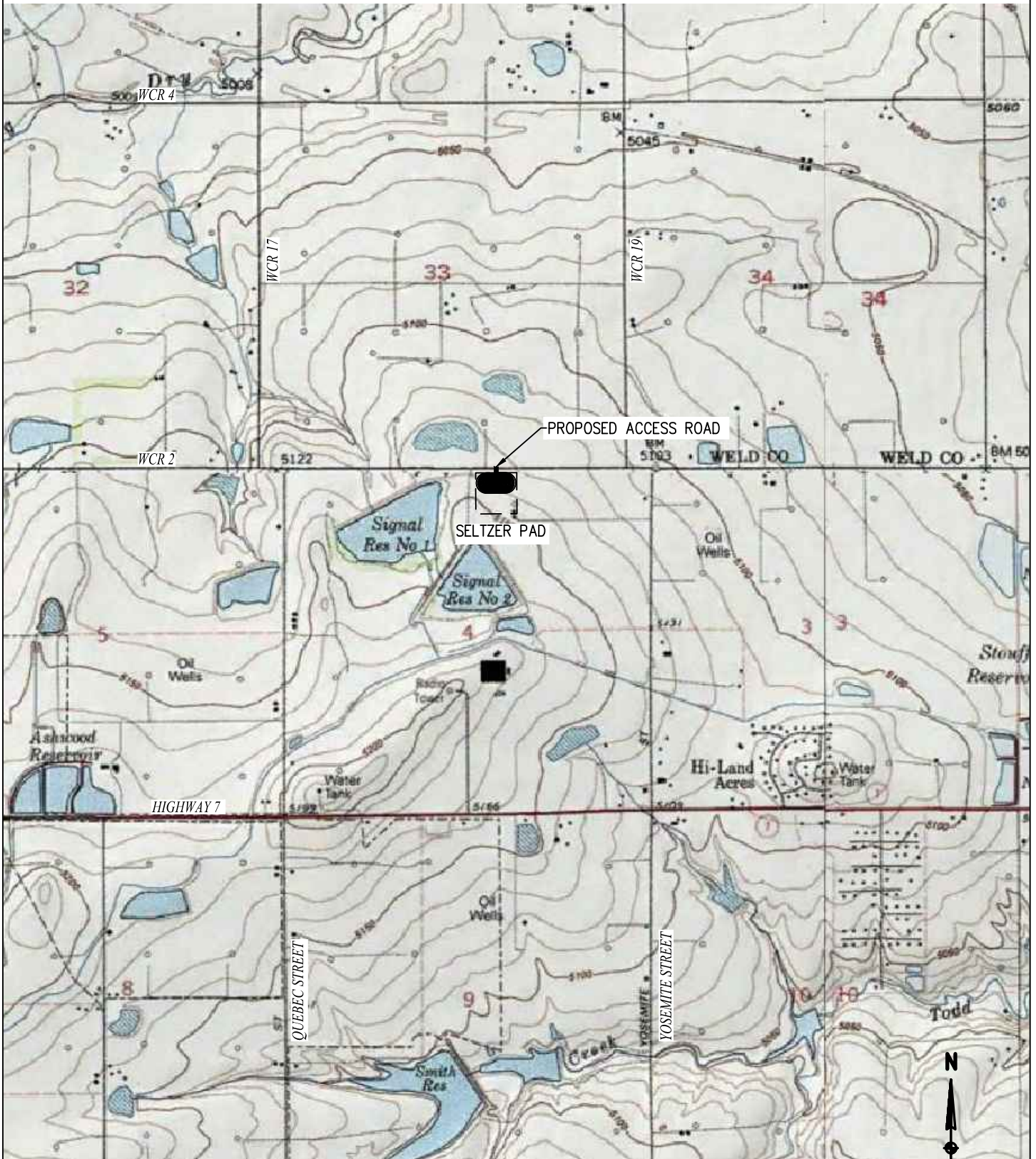


ACCESS ROAD MAP

SELTZER PAD

SECTION 4
TOWNSHIP 1 SOUTH
RANGE 67 WEST



FROM BRIGHTON, CO: FROM THE INTERSECTION OF W BRIDGE ST AND HIGHWAY 85.
DRIVE NORTH ON HIGHWAY 85 FOR ± 1.0 MILES TO COUNTY ROAD 2 AND TURN LEFT.
DRIVE WEST ON COUNTY ROAD 2 FOR ± 3.8 MILES TO PROPOSED ACCESS ROAD AND TURN LEFT.
DRIVE SOUTH ON PROPOSED ACCESS ROAD FOR ± 80.0 FEET TO PROPOSED WELL PAD LOCATION.

TOTAL DISTANCE FROM BRIGHTON, CO TO PROPOSED WELL PAD LOCATION IS ± 4.8 MILES

