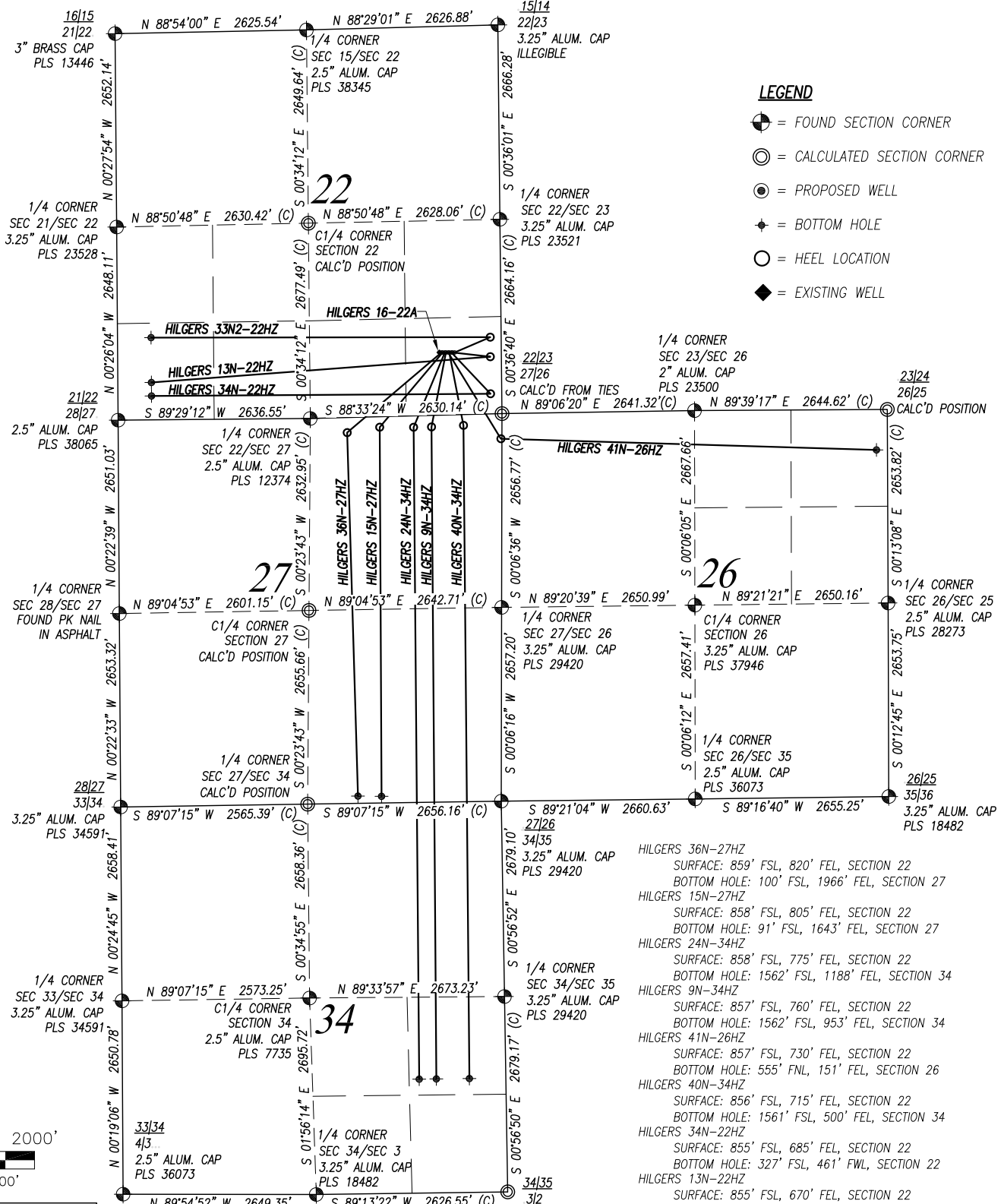
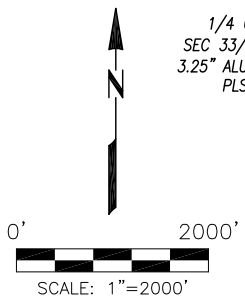


MULTI WELL PLAN: HILGERS 40N-34HZ

SECTIONS 22, 26, 27, & 34 TOWNSHIP 3 NORTH, RANGE 68 WEST, 6TH P.M.



- LEGEND**
- = FOUND SECTION CORNER
 - ⊙ = CALCULATED SECTION CORNER
 - ⊙ = PROPOSED WELL
 - ◆ = BOTTOM HOLE
 - = HEEL LOCATION
 - ◆ = EXISTING WELL



- HILGERS 36N-27HZ
SURFACE: 859' FSL, 820' FEL, SECTION 22
BOTTOM HOLE: 100' FSL, 1966' FEL, SECTION 27
- HILGERS 15N-27HZ
SURFACE: 858' FSL, 805' FEL, SECTION 22
BOTTOM HOLE: 91' FSL, 1643' FEL, SECTION 27
- HILGERS 24N-34HZ
SURFACE: 858' FSL, 775' FEL, SECTION 22
BOTTOM HOLE: 1562' FSL, 1188' FEL, SECTION 34
- HILGERS 9N-34HZ
SURFACE: 857' FSL, 760' FEL, SECTION 22
BOTTOM HOLE: 1562' FSL, 953' FEL, SECTION 34
- HILGERS 41N-26HZ
SURFACE: 857' FSL, 730' FEL, SECTION 22
BOTTOM HOLE: 555' FSL, 151' FEL, SECTION 26
- HILGERS 40N-34HZ
SURFACE: 856' FSL, 715' FEL, SECTION 22
BOTTOM HOLE: 1561' FSL, 500' FEL, SECTION 34
- HILGERS 34N-22HZ
SURFACE: 855' FSL, 685' FEL, SECTION 22
BOTTOM HOLE: 327' FSL, 461' FWL, SECTION 22
- HILGERS 13N-22HZ
SURFACE: 855' FSL, 670' FEL, SECTION 22
BOTTOM HOLE: 512' FSL, 461' FWL, SECTION 22
- HILGERS 33N2-22HZ
SURFACE: 854' FSL, 640' FEL, SECTION 22
BOTTOM HOLE: 1127' FSL, 461' FWL, SECTION 22
- EXISTING WELL: HILGERS 16-22A
SURFACE: 860' FSL, 850' FEL, SECTION 22

PREPARED FOR:



Kerr-McGee Oil & Gas Onshore L.P.
1099 18th Street
Denver, Colorado 80202

Acklam, Inc.		MULTI WELL PLAN - HILGERS 40N-34HZ	
DATE SURVEYED: 06/25/2015		SURFACE LOCATION	
DATE DRAFTED: 08/24/2015		SE1/4 SE1/4 SECTION 22, T3N, R68W, 6TH P.M.	
DRAFTED BY: SMF CHK BY: JAM		WELD COUNTY, COLORADO	
JOB No. 155004	REVISED: 09/18/2015		

NOTICE: According to Colorado law you must commence any legal action based upon any defect in this survey within three years after you first discover such defect. In no event may any action based upon any defect in this survey be commenced more than ten years from the date of the certification shown hereon.