

# **EXTRACTION OIL & GAS**

**WELD COUNTY, COLORADO (NAD 83)**

**NW NE SEC. 4 T1S R67W 6th P.M.**

**SELTZER 11**

**ORIGINAL WELLBORE**

**13 October, 2015**

**Plan: PROPOSAL #1**





Project: WELD COUNTY, COLORADO (NAD 83)  
Site: NW NE SEC. 4 T1S R67W 6th P.M.  
Well: SELTZER 11  
Wellbore: ORIGINAL WELLBORE  
Design: PROPOSAL #1

ANNOTATIONS

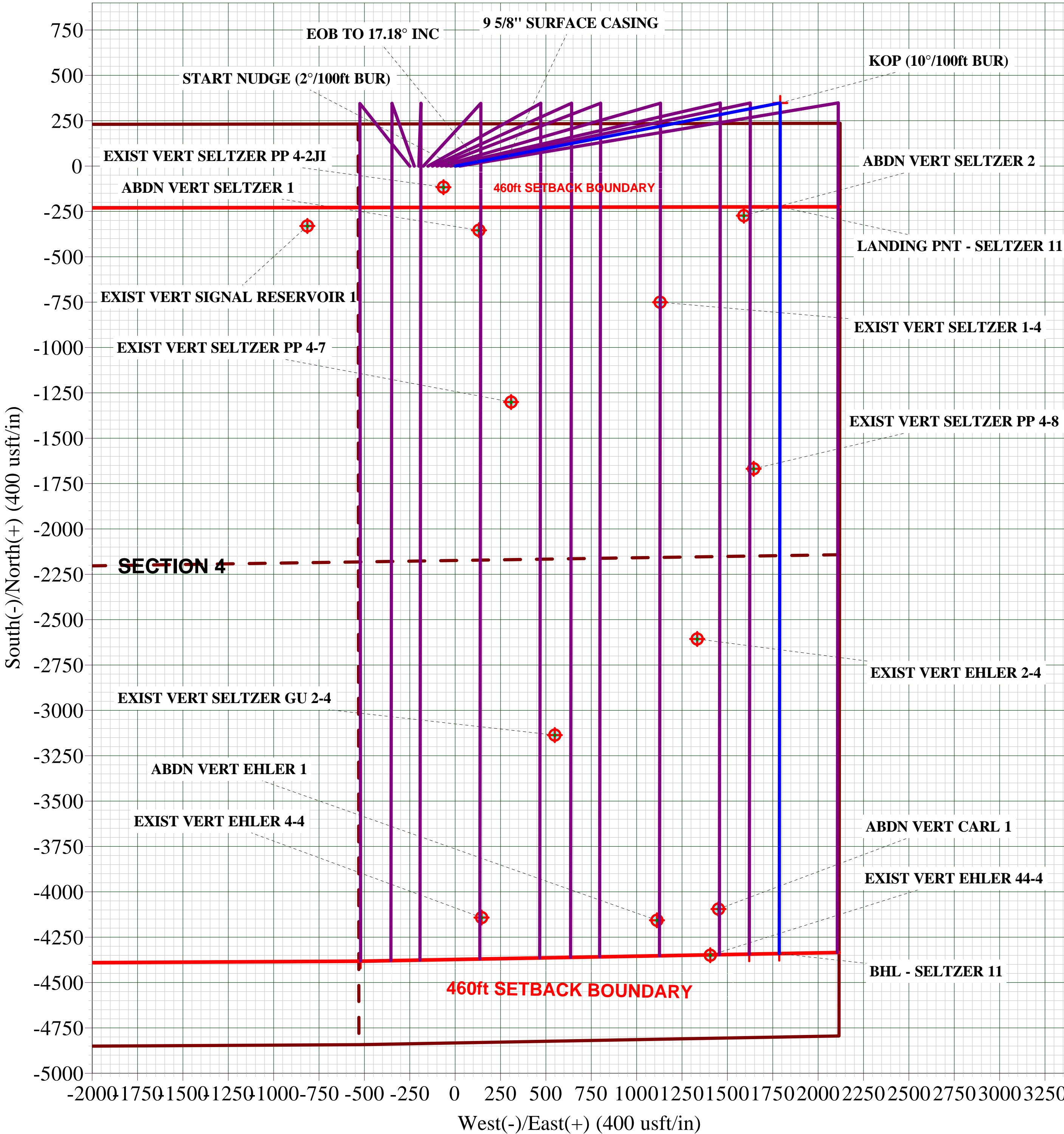
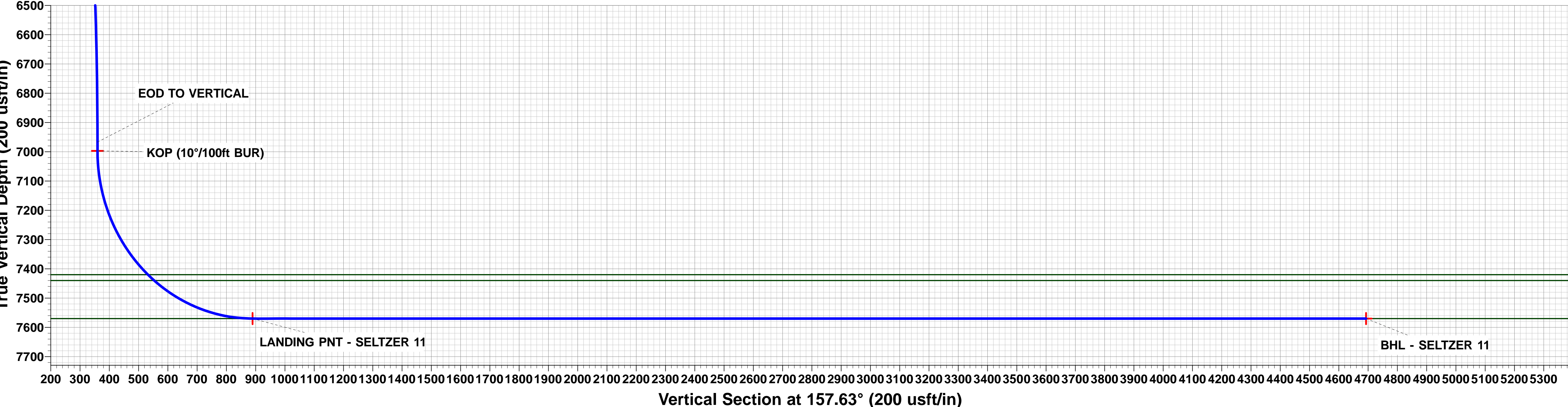
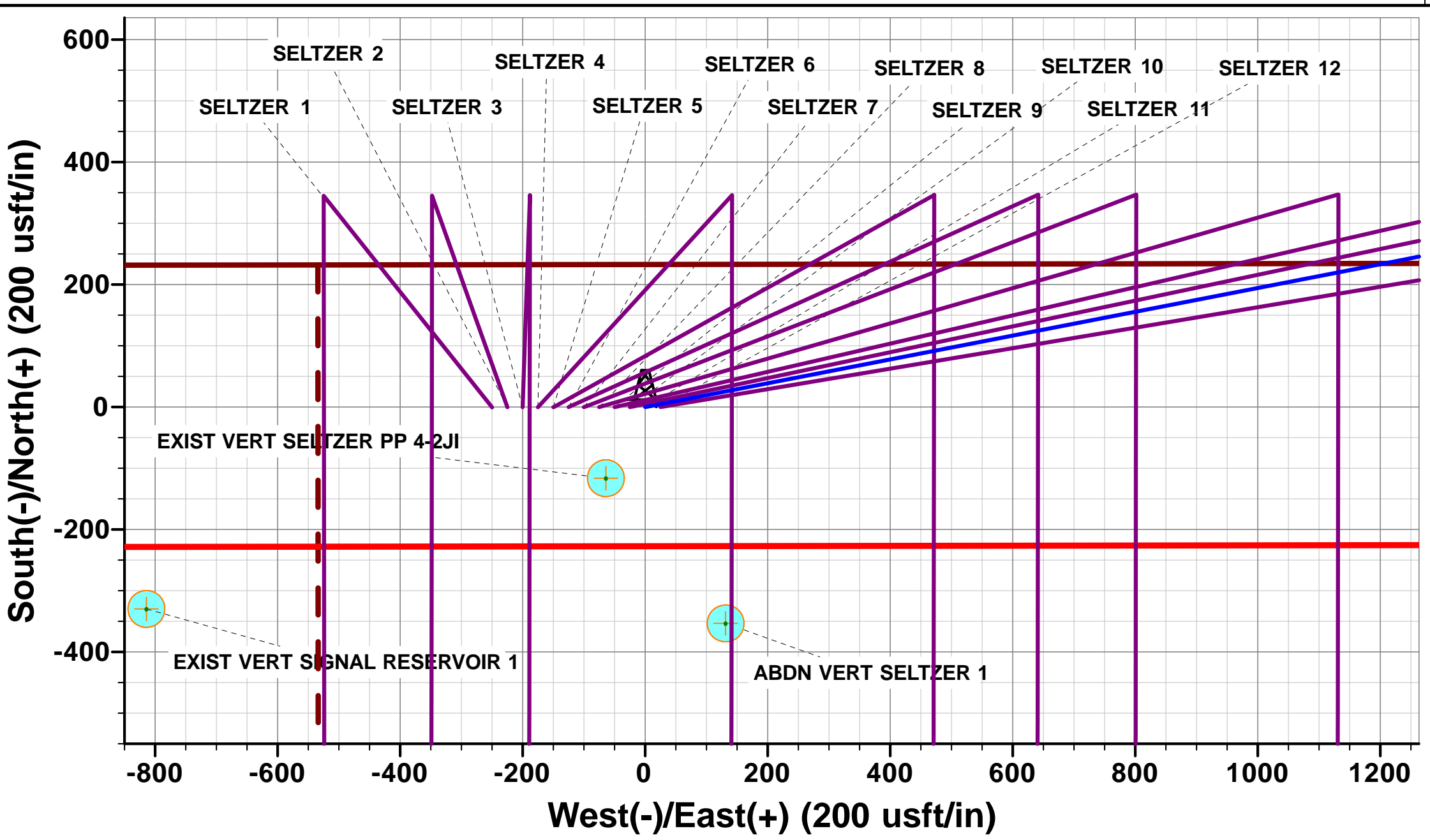
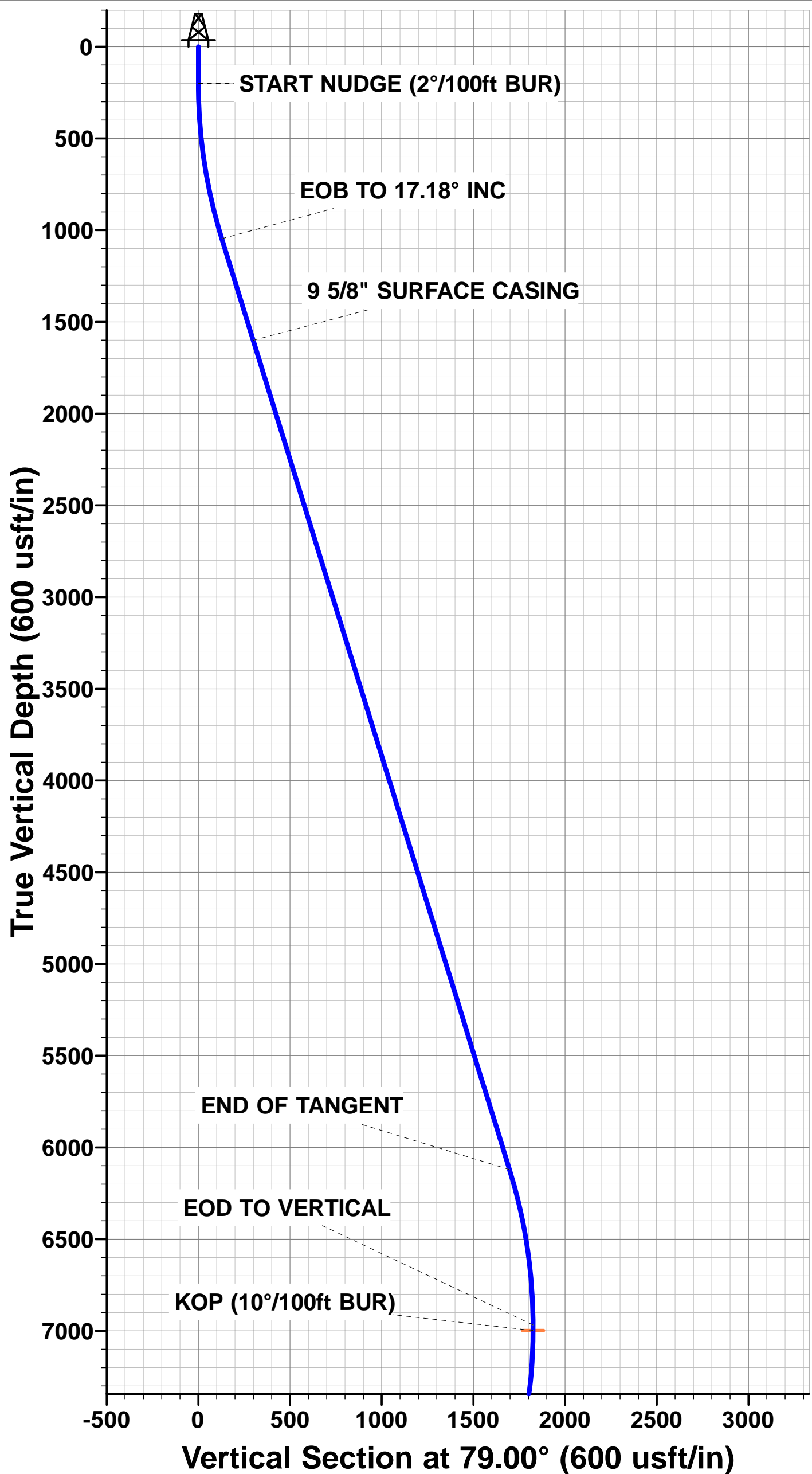
TVD	MD	Inc	Azi	+N/-S	+E/-W	VSect	Dep	Annotation
200.0	200.0	0.00	0.00	0.0	0.0	0.0	0.0	START NUDGE (2°/100ft BUR)
1046.4	1059.2	17.18	79.00	24.4	125.5	25.2	127.9	EOB TO 17.18° INC
1600.0	1638.7	17.18	79.00	57.1	293.6	58.9	299.1	9 5/8" SURFACE CASING
6120.6	6370.5	17.18	79.00	323.9	1666.0	334.4	1697.1	END OF TANGENT
6967.0	7229.8	0.00	0.00	348.3	1791.5	359.6	1825.0	EOD TO VERTICAL
6997.0	7259.8	0.00	0.00	348.3	1791.5	359.6	1825.0	KOP (10°/100ft BUR)
7570.0	8159.8	90.00	180.07	-224.7	1790.8	889.2	2398.0	LANDING PNT - SELTZER 11
7570.0	12275.2	90.00	180.07	-4340.0	1785.8	4693.1	6513.4	BHL - SELTZER 11

PROPOSED LOCAL COORDINATES:

SHL: 233ft FNL & 2122ft FEL Sec 4  
LANDING PNT: 460ft FNL & 330ft FEL Sec 4  
BHL: 460ft FSL & 330ft FEL Sec 4

WELLBORE TARGET DETAILS (LAT/LONG)

Name	TVD	+N/-S	+E/-W	Latitude	Longitude
KOP - SELTZER 11	6997.0	348.3	1791.5	40.000675	-104.885566
LANDING PNT - SELTZER 11	7570.0	-224.7	1790.8	39.999102	-104.885569
BHL - SELTZER 11	7570.0	-4340.0	1785.8	39.987805	-104.885588



# Planning Report



<b>Database:</b>	EDM 5000.1 Single User Db	<b>Local Co-ordinate Reference:</b>	Well SELTZER 11
<b>Company:</b>	EXTRACTION OIL & GAS	<b>TVD Reference:</b>	KB-EST @ 5087.0usft (Original Well Elev)
<b>Project:</b>	WELD COUNTY, COLORADO (NAD 83)	<b>MD Reference:</b>	KB-EST @ 5087.0usft (Original Well Elev)
<b>Site:</b>	NW NE SEC. 4 T1S R67W 6th P.M.	<b>North Reference:</b>	True
<b>Well:</b>	SELTZER 11	<b>Survey Calculation Method:</b>	Minimum Curvature
<b>Wellbore:</b>	ORIGINAL WELLBORE		
<b>Design:</b>	PROPOSAL #1		

<b>Project</b>	WELD COUNTY, COLORADO (NAD 83)		
<b>Map System:</b>	US State Plane 1983	<b>System Datum:</b>	Mean Sea Level
<b>Geo Datum:</b>	North American Datum 1983		
<b>Map Zone:</b>	Colorado Northern Zone		Using geodetic scale factor

<b>Site</b>	NW NE SEC. 4 T1S R67W 6th P.M.		
<b>Site Position:</b>		<b>Northing:</b>	1,243,328.66 usft
<b>From:</b>	Lat/Long	<b>Easting:</b>	3,170,368.61 usft
<b>Position Uncertainty:</b>	0.0 usft	<b>Slot Radius:</b>	1.10000ft
		<b>Latitude:</b>	39.999719
		<b>Longitude:</b>	-104.891872
		<b>Grid Convergence:</b>	0.39 °

<b>Well</b>	SELTZER 11		
<b>Well Position</b>	<b>+N/-S</b>	0.0 usft	<b>Northing:</b> 1,243,328.48 usfi
	<b>+E/-W</b>	-24.9 usft	<b>Easting:</b> 3,170,343.68 usfi
<b>Position Uncertainty</b>	0.0 usft	<b>Wellhead Elevation:</b>	usfi
		<b>Latitude:</b>	39.999719
		<b>Longitude:</b>	-104.891961
		<b>Ground Level:</b>	5,081.0 usft

<b>Wellbore</b>	ORIGINAL WELLBORE				
<b>Magnetics</b>	<b>Model Name</b>	<b>Sample Date</b>	<b>Declination (°)</b>	<b>Dip Angle (°)</b>	<b>Field Strength (nT)</b>
	IGRF2015	13/10/2015	8.42	66.55	52,358

<b>Design</b>	PROPOSAL #1			
<b>Audit Notes:</b>				
<b>Version:</b>	<b>Phase:</b>	PROTOTYPE	<b>Tie On Depth:</b>	0.0
<b>Vertical Section:</b>	<b>Depth From (TVD) (usft)</b>	<b>+N/-S (usft)</b>	<b>+E/-W (usft)</b>	<b>Direction (°)</b>
	7,570.0	0.0	0.0	157.63

<b>Plan Sections</b>											
MD (usft)	Inc (°)	Azi (°)	Vertical Depth	SS (usft)	+N/-S (usft)	+E/-W (usft)	Dogleg Rate (°/100usft)	Build Rate (°/100usft)	Turn Rate (°/100usft)	TFO (°)	Target
0.0	0.00	0.00	0.0	-5,087.0	0.0	0.0	0.00	0.00	0.00	0.00	
200.0	0.00	0.00	200.0	-4,887.0	0.0	0.0	0.00	0.00	0.00	0.00	
1,059.2	17.18	79.00	1,046.4	-4,040.6	24.4	125.5	2.00	2.00	0.00	79.00	
6,370.5	17.18	79.00	6,120.6	1,033.6	323.9	1,666.0	0.00	0.00	0.00	0.00	
7,229.8	0.00	0.00	6,967.0	1,880.0	348.3	1,791.5	2.00	-2.00	0.00	180.00	
7,259.8	0.00	0.00	6,997.0	1,910.0	348.3	1,791.5	0.00	0.00	0.00	0.00	KOP - SELTZER 11
8,159.8	90.00	180.07	7,570.0	2,483.0	-224.7	1,790.8	10.00	10.00	-19.99	180.07	LANDING PNT - SE
12,275.2	90.00	180.07	7,570.0	2,483.0	-4,340.0	1,785.8	0.00	0.00	0.00	64.26	BHL - SELTZER 11

# Planning Report



<b>Database:</b>	EDM 5000.1 Single User Db	<b>Local Co-ordinate Reference:</b>	Well SELTZER 11
<b>Company:</b>	EXTRACTION OIL & GAS	<b>TVD Reference:</b>	KB-EST @ 5087.0usft (Original Well Elev)
<b>Project:</b>	WELD COUNTY, COLORADO (NAD 83)	<b>MD Reference:</b>	KB-EST @ 5087.0usft (Original Well Elev)
<b>Site:</b>	NW NE SEC. 4 T1S R67W 6th P.M.	<b>North Reference:</b>	True
<b>Well:</b>	SELTZER 11	<b>Survey Calculation Method:</b>	Minimum Curvature
<b>Wellbore:</b>	ORIGINAL WELLBORE		
<b>Design:</b>	PROPOSAL #1		

## Planned Survey

MD (usft)	Inc (°)	Azi (°)	TVD (usft)	SS (usft)	+N/-S (usft)	+E/-W (usft)	Vertical Section (usft)	Dogleg Rate (°/100usft)	Build Rate (°/100usft)	Turn Rate (°/100usft)
0.0	0.00	0.00	0.0	5,087.00	0.0	0.0	0.0	0.00	0.00	0.00
100.0	0.00	0.00	100.0	4,987.00	0.0	0.0	0.0	0.00	0.00	0.00
<b>START NUDGE (2°/100ft BUR)</b>										
<b>200.0</b>	<b>0.00</b>	<b>0.00</b>	<b>200.0</b>	<b>4,887.00</b>	<b>0.0</b>	<b>0.0</b>	<b>0.0</b>	<b>0.00</b>	<b>0.00</b>	<b>0.00</b>
300.0	2.00	79.00	300.0	4,787.02	0.3	1.7	0.3	2.00	2.00	0.00
400.0	4.00	79.00	399.8	4,687.16	1.3	6.9	1.4	2.00	2.00	0.00
500.0	6.00	79.00	499.5	4,587.55	3.0	15.4	3.1	2.00	2.00	0.00
600.0	8.00	79.00	598.7	4,488.30	5.3	27.4	5.5	2.00	2.00	0.00
700.0	10.00	79.00	697.5	4,389.53	8.3	42.7	8.6	2.00	2.00	0.00
800.0	12.00	79.00	795.6	4,291.38	11.9	61.5	12.3	2.00	2.00	0.00
900.0	14.00	79.00	893.1	4,193.94	16.2	83.5	16.8	2.00	2.00	0.00
1,000.0	16.00	79.00	989.6	4,097.36	21.2	108.9	21.9	2.00	2.00	0.00
<b>EOB TO 17.18° INC</b>										
<b>1,059.2</b>	<b>17.18</b>	<b>79.00</b>	<b>1,046.4</b>	<b>4,040.58</b>	<b>24.4</b>	<b>125.5</b>	<b>25.2</b>	<b>2.00</b>	<b>2.00</b>	<b>0.00</b>
1,100.0	17.18	79.00	1,085.4	4,001.64	26.7	137.4	27.6	0.00	0.00	0.00
1,200.0	17.18	79.00	1,180.9	3,906.11	32.3	166.4	33.4	0.00	0.00	0.00
1,300.0	17.18	79.00	1,276.4	3,810.57	38.0	195.4	39.2	0.00	0.00	0.00
1,400.0	17.18	79.00	1,372.0	3,715.04	43.6	224.4	45.0	0.00	0.00	0.00
1,500.0	17.18	79.00	1,467.5	3,619.50	49.3	253.4	50.9	0.00	0.00	0.00
1,600.0	17.18	79.00	1,563.0	3,523.97	54.9	282.4	56.7	0.00	0.00	0.00
<b>9 5/8" SURFACE CASING</b>										
<b>1,638.7</b>	<b>17.18</b>	<b>79.00</b>	<b>1,600.0</b>	<b>3,487.00</b>	<b>57.1</b>	<b>293.6</b>	<b>58.9</b>	<b>0.00</b>	<b>0.00</b>	<b>0.00</b>
1,700.0	17.18	79.00	1,658.6	3,428.43	60.5	311.4	62.5	0.00	0.00	0.00
1,800.0	17.18	79.00	1,754.1	3,332.90	66.2	340.4	68.3	0.00	0.00	0.00
1,900.0	17.18	79.00	1,849.6	3,237.36	71.8	369.4	74.1	0.00	0.00	0.00
2,000.0	17.18	79.00	1,945.2	3,141.82	77.5	398.4	80.0	0.00	0.00	0.00
2,100.0	17.18	79.00	2,040.7	3,046.29	83.1	427.4	85.8	0.00	0.00	0.00
2,200.0	17.18	79.00	2,136.2	2,950.75	88.7	456.4	91.6	0.00	0.00	0.00
2,300.0	17.18	79.00	2,231.8	2,855.22	94.4	485.4	97.4	0.00	0.00	0.00
2,400.0	17.18	79.00	2,327.3	2,759.68	100.0	514.4	103.3	0.00	0.00	0.00
2,500.0	17.18	79.00	2,422.9	2,664.15	105.6	543.4	109.1	0.00	0.00	0.00
2,600.0	17.18	79.00	2,518.4	2,568.61	111.3	572.4	114.9	0.00	0.00	0.00
2,700.0	17.18	79.00	2,613.9	2,473.07	116.9	601.4	120.7	0.00	0.00	0.00
2,800.0	17.18	79.00	2,709.5	2,377.54	122.6	630.4	126.5	0.00	0.00	0.00
2,900.0	17.18	79.00	2,805.0	2,282.00	128.2	659.4	132.4	0.00	0.00	0.00
3,000.0	17.18	79.00	2,900.5	2,186.47	133.8	688.4	138.2	0.00	0.00	0.00
3,100.0	17.18	79.00	2,996.1	2,090.93	139.5	717.4	144.0	0.00	0.00	0.00
3,200.0	17.18	79.00	3,091.6	1,995.40	145.1	746.4	149.8	0.00	0.00	0.00
3,300.0	17.18	79.00	3,187.1	1,899.86	150.8	775.4	155.6	0.00	0.00	0.00
3,400.0	17.18	79.00	3,282.7	1,804.33	156.4	804.4	161.5	0.00	0.00	0.00
3,500.0	17.18	79.00	3,378.2	1,708.79	162.0	833.4	167.3	0.00	0.00	0.00
3,600.0	17.18	79.00	3,473.7	1,613.25	167.7	862.4	173.1	0.00	0.00	0.00
3,700.0	17.18	79.00	3,569.3	1,517.72	173.3	891.4	178.9	0.00	0.00	0.00
3,800.0	17.18	79.00	3,664.8	1,422.18	178.9	920.4	184.8	0.00	0.00	0.00
3,900.0	17.18	79.00	3,760.4	1,326.65	184.6	949.4	190.6	0.00	0.00	0.00
4,000.0	17.18	79.00	3,855.9	1,231.11	190.2	978.4	196.4	0.00	0.00	0.00
4,100.0	17.18	79.00	3,951.4	1,135.58	195.9	1,007.4	202.2	0.00	0.00	0.00
4,200.0	17.18	79.00	4,047.0	1,040.04	201.5	1,036.4	208.0	0.00	0.00	0.00
<b>PARKMAN</b>										
<b>4,286.9</b>	<b>17.18</b>	<b>79.00</b>	<b>4,130.0</b>	<b>957.00</b>	<b>206.4</b>	<b>1,061.7</b>	<b>213.1</b>	<b>0.00</b>	<b>0.00</b>	<b>0.00</b>
4,300.0	17.18	79.00	4,142.5	944.51	207.1	1,065.4	213.9	0.00	0.00	0.00
4,400.0	17.18	79.00	4,238.0	848.97	212.8	1,094.5	219.7	0.00	0.00	0.00
4,500.0	17.18	79.00	4,333.6	753.43	218.4	1,123.5	225.5	0.00	0.00	0.00
4,600.0	17.18	79.00	4,429.1	657.90	224.1	1,152.5	231.3	0.00	0.00	0.00

<b>Database:</b>	EDM 5000.1 Single User Db	<b>Local Co-ordinate Reference:</b>	Well SELTZER 11
<b>Company:</b>	EXTRACTION OIL & GAS	<b>TVD Reference:</b>	KB-EST @ 5087.0usft (Original Well Elev)
<b>Project:</b>	WELD COUNTY, COLORADO (NAD 83)	<b>MD Reference:</b>	KB-EST @ 5087.0usft (Original Well Elev)
<b>Site:</b>	NW NE SEC. 4 T1S R67W 6th P.M.	<b>North Reference:</b>	True
<b>Well:</b>	SELTZER 11	<b>Survey Calculation Method:</b>	Minimum Curvature
<b>Wellbore:</b>	ORIGINAL WELLBORE		
<b>Design:</b>	PROPOSAL #1		

## Planned Survey

MD (usft)	Inc (°)	Azi (°)	TVD (usft)	SS (usft)	+N/-S (usft)	+E/-W (usft)	Vertical Section (usft)	Dogleg Rate (°/100usft)	Build Rate (°/100usft)	Turn Rate (°/100usft)
4,700.0	17.18	79.00	4,524.6	562.36	229.7	1,181.5	237.1	0.00	0.00	0.00
4,800.0	17.18	79.00	4,620.2	466.83	235.3	1,210.5	243.0	0.00	0.00	0.00
4,900.0	17.18	79.00	4,715.7	371.29	241.0	1,239.5	248.8	0.00	0.00	0.00
5,000.0	17.18	79.00	4,811.2	275.76	246.6	1,268.5	254.6	0.00	0.00	0.00
5,100.0	17.18	79.00	4,906.8	180.22	252.3	1,297.5	260.4	0.00	0.00	0.00
<b>SUSSEX</b>										
<b>5,166.2</b>	<b>17.18</b>	<b>79.00</b>	<b>4,970.0</b>	<b>117.00</b>	<b>256.0</b>	<b>1,316.7</b>	<b>264.3</b>	<b>0.00</b>	<b>0.00</b>	<b>0.00</b>
5,200.0	17.18	79.00	5,002.3	84.68	257.9	1,326.5	266.3	0.00	0.00	0.00
5,300.0	17.18	79.00	5,097.9	-10.85	263.5	1,355.5	272.1	0.00	0.00	0.00
5,400.0	17.18	79.00	5,193.4	-106.39	269.2	1,384.5	277.9	0.00	0.00	0.00
5,500.0	17.18	79.00	5,288.9	-201.92	274.8	1,413.5	283.7	0.00	0.00	0.00
5,600.0	17.18	79.00	5,384.5	-297.46	280.4	1,442.5	289.5	0.00	0.00	0.00
5,700.0	17.18	79.00	5,480.0	-392.99	286.1	1,471.5	295.4	0.00	0.00	0.00
5,800.0	17.18	79.00	5,575.5	-488.53	291.7	1,500.5	301.2	0.00	0.00	0.00
5,900.0	17.18	79.00	5,671.1	-584.06	297.4	1,529.5	307.0	0.00	0.00	0.00
6,000.0	17.18	79.00	5,766.6	-679.60	303.0	1,558.5	312.8	0.00	0.00	0.00
6,100.0	17.18	79.00	5,862.1	-775.14	308.6	1,587.5	318.7	0.00	0.00	0.00
6,200.0	17.18	79.00	5,957.7	-870.67	314.3	1,616.5	324.5	0.00	0.00	0.00
6,300.0	17.18	79.00	6,053.2	-966.21	319.9	1,645.5	330.3	0.00	0.00	0.00
<b>END OF TANGENT</b>										
<b>6,370.5</b>	<b>17.18</b>	<b>79.00</b>	<b>6,120.6</b>	<b>-1,033.58</b>	<b>323.9</b>	<b>1,666.0</b>	<b>334.4</b>	<b>0.00</b>	<b>0.00</b>	<b>0.00</b>
6,400.0	16.60	79.00	6,148.8	-1,061.79	325.5	1,674.4	336.1	2.00	-2.00	0.00
6,500.0	14.60	79.00	6,245.1	-1,158.10	330.7	1,700.8	341.4	2.00	-2.00	0.00
<b>SHANNON</b>										
<b>6,536.0</b>	<b>13.88</b>	<b>79.00</b>	<b>6,280.0</b>	<b>-1,193.00</b>	<b>332.3</b>	<b>1,709.4</b>	<b>343.1</b>	<b>2.00</b>	<b>-2.00</b>	<b>0.00</b>
6,600.0	12.60	79.00	6,342.3	-1,255.29	335.1	1,723.8	346.0	2.00	-2.00	0.00
6,700.0	10.60	79.00	6,440.2	-1,353.25	339.0	1,743.6	350.0	2.00	-2.00	0.00
6,800.0	8.60	79.00	6,538.8	-1,451.84	342.2	1,759.9	353.3	2.00	-2.00	0.00
6,900.0	6.60	79.00	6,638.0	-1,550.96	344.7	1,772.9	355.9	2.00	-2.00	0.00
7,000.0	4.60	79.00	6,737.5	-1,650.48	346.5	1,782.5	357.8	2.00	-2.00	0.00
7,100.0	2.60	79.00	6,837.3	-1,750.28	347.7	1,788.6	359.0	2.00	-2.00	0.00
7,200.0	0.60	79.00	6,937.2	-1,850.23	348.3	1,791.3	359.6	2.00	-2.00	0.00
<b>EOD TO VERTICAL</b>										
<b>7,229.8</b>	<b>0.00</b>	<b>0.00</b>	<b>6,967.0</b>	<b>-1,880.00</b>	<b>348.3</b>	<b>1,791.5</b>	<b>359.6</b>	<b>2.00</b>	<b>-2.00</b>	<b>0.00</b>
<b>KOP (10°/100ft BUR)</b>										
<b>7,259.8</b>	<b>0.00</b>	<b>0.00</b>	<b>6,997.0</b>	<b>-1,910.00</b>	<b>348.3</b>	<b>1,791.5</b>	<b>359.6</b>	<b>0.00</b>	<b>0.00</b>	<b>0.00</b>
7,300.0	4.02	180.07	7,037.2	-1,950.20	346.9	1,791.5	360.9	10.00	10.00	0.00
7,400.0	14.02	180.07	7,135.8	-2,048.84	331.2	1,791.5	375.4	10.00	10.00	0.00
7,500.0	24.02	180.07	7,230.3	-2,143.26	298.7	1,791.4	405.5	10.00	10.00	0.00
7,600.0	34.02	180.07	7,317.6	-2,230.59	250.2	1,791.4	450.3	10.00	10.00	0.00
7,700.0	44.02	180.07	7,395.2	-2,308.18	187.3	1,791.3	508.4	10.00	10.00	0.00
<b>SHARON SPRINGS</b>										
<b>7,735.6</b>	<b>47.58</b>	<b>180.07</b>	<b>7,420.0</b>	<b>-2,333.00</b>	<b>161.8</b>	<b>1,791.3</b>	<b>532.0</b>	<b>10.00</b>	<b>10.00</b>	<b>0.00</b>
<b>NIOBRARA</b>										
<b>7,766.2</b>	<b>50.64</b>	<b>180.07</b>	<b>7,440.0</b>	<b>-2,353.00</b>	<b>138.7</b>	<b>1,791.3</b>	<b>553.3</b>	<b>10.00</b>	<b>10.00</b>	<b>0.00</b>
7,800.0	54.02	180.07	7,460.7	-2,373.68	111.9	1,791.2	578.1	10.00	10.00	0.00
7,900.0	64.02	180.07	7,512.1	-2,425.09	26.3	1,791.1	657.2	10.00	10.00	0.00
8,000.0	74.02	180.07	7,547.9	-2,460.85	-66.9	1,791.0	743.4	10.00	10.00	0.00
8,100.0	84.02	180.07	7,566.9	-2,479.88	-165.0	1,790.9	834.0	10.00	10.00	0.00
<b>LANDING PNT - SELTZER 11 - NIO B</b>										
<b>8,159.8</b>	<b>90.00</b>	<b>180.07</b>	<b>7,570.0</b>	<b>-2,483.00</b>	<b>-224.7</b>	<b>1,790.8</b>	<b>889.2</b>	<b>10.00</b>	<b>10.00</b>	<b>0.00</b>
8,200.0	90.00	180.07	7,570.0	-2,483.00	-264.9	1,790.8	926.4	0.00	0.00	0.00
8,300.0	90.00	180.07	7,570.0	-2,483.00	-364.9	1,790.7	1,018.8	0.00	0.00	0.00



<b>Database:</b>	EDM 5000.1 Single User Db	<b>Local Co-ordinate Reference:</b>	Well SELTZER 11
<b>Company:</b>	EXTRACTION OIL & GAS	<b>TVD Reference:</b>	KB-EST @ 5087.0usft (Original Well Elev)
<b>Project:</b>	WELD COUNTY, COLORADO (NAD 83)	<b>MD Reference:</b>	KB-EST @ 5087.0usft (Original Well Elev)
<b>Site:</b>	NW NE SEC. 4 T1S R67W 6th P.M.	<b>North Reference:</b>	True
<b>Well:</b>	SELTZER 11	<b>Survey Calculation Method:</b>	Minimum Curvature
<b>Wellbore:</b>	ORIGINAL WELLBORE		
<b>Design:</b>	PROPOSAL #1		

## Planned Survey

MD (usft)	Inc (°)	Azi (°)	TVD (usft)	SS (usft)	+N/-S (usft)	+E/-W (usft)	Vertical Section (usft)	Dogleg Rate (°/100usft)	Build Rate (°/100usft)	Turn Rate (°/100usft)
8,400.0	90.00	180.07	7,570.0	-2,483.00	-464.9	1,790.5	1,111.2	0.00	0.00	0.00
8,500.0	90.00	180.07	7,570.0	-2,483.01	-564.9	1,790.4	1,203.7	0.00	0.00	0.00
8,600.0	90.00	180.07	7,570.0	-2,483.01	-664.9	1,790.3	1,296.1	0.00	0.00	0.00
8,700.0	90.00	180.07	7,570.0	-2,483.01	-764.9	1,790.2	1,388.5	0.00	0.00	0.00
8,800.0	90.00	180.07	7,570.0	-2,483.01	-864.9	1,790.1	1,481.0	0.00	0.00	0.00
8,900.0	90.00	180.07	7,570.0	-2,483.01	-964.9	1,789.9	1,573.4	0.00	0.00	0.00
9,000.0	90.00	180.07	7,570.0	-2,483.01	-1,064.9	1,789.8	1,665.8	0.00	0.00	0.00
9,100.0	90.00	180.07	7,570.0	-2,483.02	-1,164.9	1,789.7	1,758.3	0.00	0.00	0.00
9,200.0	90.00	180.07	7,570.0	-2,483.02	-1,264.9	1,789.6	1,850.7	0.00	0.00	0.00
9,300.0	90.00	180.07	7,570.0	-2,483.02	-1,364.9	1,789.5	1,943.1	0.00	0.00	0.00
9,400.0	90.00	180.07	7,570.0	-2,483.02	-1,464.9	1,789.3	2,035.5	0.00	0.00	0.00
9,500.0	90.00	180.07	7,570.0	-2,483.02	-1,564.9	1,789.2	2,128.0	0.00	0.00	0.00
9,600.0	90.00	180.07	7,570.0	-2,483.02	-1,664.9	1,789.1	2,220.4	0.00	0.00	0.00
9,700.0	90.00	180.07	7,570.0	-2,483.02	-1,764.9	1,789.0	2,312.8	0.00	0.00	0.00
9,800.0	90.00	180.07	7,570.0	-2,483.02	-1,864.9	1,788.9	2,405.3	0.00	0.00	0.00
9,900.0	90.00	180.07	7,570.0	-2,483.02	-1,964.9	1,788.7	2,497.7	0.00	0.00	0.00
10,000.0	90.00	180.07	7,570.0	-2,483.02	-2,064.9	1,788.6	2,590.1	0.00	0.00	0.00
10,100.0	90.00	180.07	7,570.0	-2,483.02	-2,164.9	1,788.5	2,682.6	0.00	0.00	0.00
10,200.0	90.00	180.07	7,570.0	-2,483.02	-2,264.9	1,788.4	2,775.0	0.00	0.00	0.00
10,300.0	90.00	180.07	7,570.0	-2,483.02	-2,364.9	1,788.3	2,867.4	0.00	0.00	0.00
10,400.0	90.00	180.07	7,570.0	-2,483.02	-2,464.9	1,788.1	2,959.9	0.00	0.00	0.00
10,500.0	90.00	180.07	7,570.0	-2,483.02	-2,564.9	1,788.0	3,052.3	0.00	0.00	0.00
10,600.0	90.00	180.07	7,570.0	-2,483.02	-2,664.9	1,787.9	3,144.7	0.00	0.00	0.00
10,700.0	90.00	180.07	7,570.0	-2,483.02	-2,764.9	1,787.8	3,237.2	0.00	0.00	0.00
10,800.0	90.00	180.07	7,570.0	-2,483.02	-2,864.9	1,787.6	3,329.6	0.00	0.00	0.00
10,900.0	90.00	180.07	7,570.0	-2,483.02	-2,964.9	1,787.5	3,422.0	0.00	0.00	0.00
11,000.0	90.00	180.07	7,570.0	-2,483.02	-3,064.9	1,787.4	3,514.4	0.00	0.00	0.00
11,100.0	90.00	180.07	7,570.0	-2,483.02	-3,164.9	1,787.3	3,606.9	0.00	0.00	0.00
11,200.0	90.00	180.07	7,570.0	-2,483.02	-3,264.9	1,787.1	3,699.3	0.00	0.00	0.00
11,300.0	90.00	180.07	7,570.0	-2,483.02	-3,364.9	1,787.0	3,791.7	0.00	0.00	0.00
11,400.0	90.00	180.07	7,570.0	-2,483.01	-3,464.9	1,786.9	3,884.2	0.00	0.00	0.00
11,500.0	90.00	180.07	7,570.0	-2,483.01	-3,564.9	1,786.8	3,976.6	0.00	0.00	0.00
11,600.0	90.00	180.07	7,570.0	-2,483.01	-3,664.9	1,786.6	4,069.0	0.00	0.00	0.00
11,700.0	90.00	180.07	7,570.0	-2,483.01	-3,764.9	1,786.5	4,161.5	0.00	0.00	0.00
11,800.0	90.00	180.07	7,570.0	-2,483.01	-3,864.9	1,786.4	4,253.9	0.00	0.00	0.00
11,900.0	90.00	180.07	7,570.0	-2,483.01	-3,964.9	1,786.3	4,346.3	0.00	0.00	0.00
12,000.0	90.00	180.07	7,570.0	-2,483.01	-4,064.9	1,786.1	4,438.7	0.00	0.00	0.00
12,100.0	90.00	180.07	7,570.0	-2,483.00	-4,164.9	1,786.0	4,531.2	0.00	0.00	0.00
12,200.0	90.00	180.07	7,570.0	-2,483.00	-4,264.9	1,785.9	4,623.6	0.00	0.00	0.00
<b>BHL - SELTZER 11</b>										
<b>12,275.2</b>	<b>90.00</b>	<b>180.07</b>	<b>7,570.0</b>	<b>-2,483.00</b>	<b>-4,340.0</b>	<b>1,785.8</b>	<b>4,693.1</b>	<b>0.00</b>	<b>0.00</b>	<b>0.00</b>

<b>Database:</b>	EDM 5000.1 Single User Db	<b>Local Co-ordinate Reference:</b>	Well SELTZER 11
<b>Company:</b>	EXTRACTION OIL & GAS	<b>TVD Reference:</b>	KB-EST @ 5087.0usft (Original Well Elev)
<b>Project:</b>	WELD COUNTY, COLORADO (NAD 83)	<b>MD Reference:</b>	KB-EST @ 5087.0usft (Original Well Elev)
<b>Site:</b>	NW NE SEC. 4 T1S R67W 6th P.M.	<b>North Reference:</b>	True
<b>Well:</b>	SELTZER 11	<b>Survey Calculation Method:</b>	Minimum Curvature
<b>Wellbore:</b>	ORIGINAL WELLBORE		
<b>Design:</b>	PROPOSAL #1		

Formations					
MD (usft)	TVD (usft)	Name	Lithology	Dip (°)	Dip Direction (°)
4,286.9	4,130.0	PARKMAN			
5,166.2	4,970.0	SUSSEX			
6,536.0	6,280.0	SHANNON			
7,735.6	7,420.0	SHARON SPRINGS			
7,766.2	7,440.0	NIOBRARA			
8,159.8	7,570.0	NIO B			

Plan Annotations				
MD (usft)	TVD (usft)	Local Coordinates		Comment
		+N/-S (usft)	+E/-W (usft)	
200.0	200.0	0.0	0.0	START NUDGE (2°/100ft BUR)
1,059.2	1,046.4	24.4	125.5	EOB TO 17.18° INC
1,638.7	1,600.0	57.1	293.6	9 5/8" SURFACE CASING
6,370.5	6,120.6	323.9	1,666.0	END OF TANGENT
7,229.8	6,967.0	348.3	1,791.5	EOD TO VERTICAL
7,259.8	6,997.0	348.3	1,791.5	KOP (10°/100ft BUR)
8,159.8	7,570.0	-224.7	1,790.8	LANDING PNT - SELTZER 11
12,275.2	7,570.0	-4,340.0	1,785.8	BHL - SELTZER 11