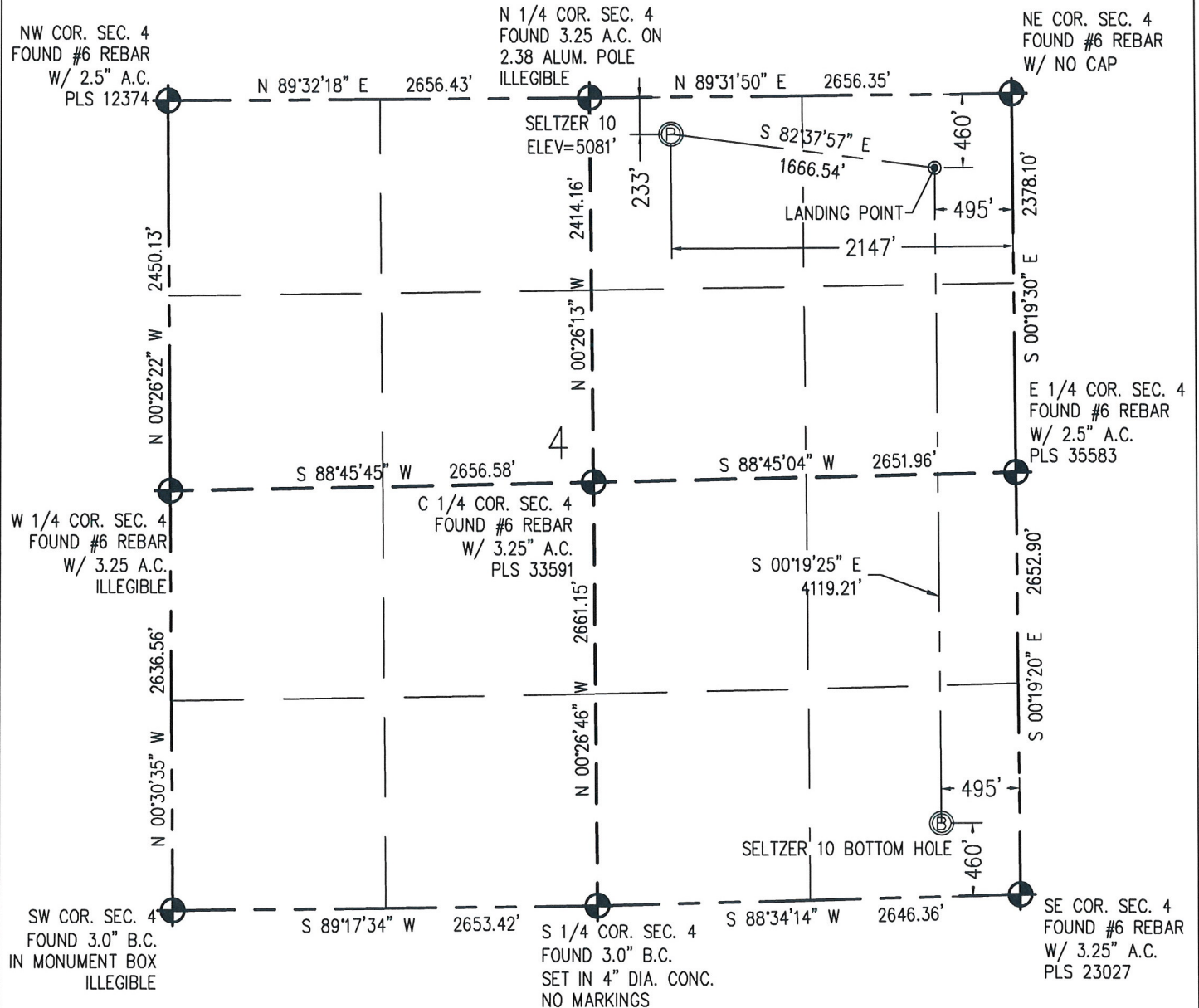


WELL LOCATION CERTIFICATE

THIS MAP DOES NOT REPRESENT A BOUNDARY SURVEY

SECTION 4
TOWNSHIP 1 SOUTH
RANGE 67 WEST

N

IN ACCORDANCE WITH A REQUEST FROM JOSEPH SILIPO - EXTRACTION, BASELINE ENGINEERING CORP. HAS DETERMINED THE LOCATION OF THE SELTZER 10 TO BE 233' FNL AND 2147' FEL, AS MEASURED AT NINETY (90) DEGREES FROM THE SECTION LINE OF SECTION 4, TOWNSHIP 1 SOUTH, RANGE 67 WEST AND THE BOTTOM HOLE LOCATION TO BE 460' FSL AND 495' FEL OF SECTION 4, TOWNSHIP 1 SOUTH, RANGE 67 WEST, 6TH PRINCIPAL MERIDIAN, ADAMS COUNTY, COLORADO.

I HEREBY CERTIFY THAT THIS WELL LOCATION CERTIFICATE WAS PREPARED BY ME, OR UNDER MY DIRECT SUPERVISION, THAT THE FIELD WORK WAS COMPLETED ON 8/18/2015, THAT IT IS NOT A LAND SURVEY PLAT OR AN IMPROVEMENT SURVEY PLAT, AND THAT IT IS NOT TO BE RELIED UPON FOR ESTABLISHMENT OF FENCE, BUILDING, OR OTHER FUTURE IMPROVEMENT LINES.

0 1000
Scale 1" = 1000 ft

NOTES:

- 1) NEAREST CULTURAL ITEMS:
BUILDING: 823' NW
BUILDING UNIT: 1178' NW
HIGH OCCUPANCY BUILDING UNIT: 5280'+
DESIGNATED OUTSIDE ACTIVITY AREA: 5280'+
PUBLIC ROAD: WELD COUNTY ROAD 2 221' N
ABOVE GROUND UTILITY: 205' N
RAILROAD: 5280'+
PROPERTY LINE: 233' N
- 2) SURFACE USE: NATURAL GRASS.
- 3) OPERATOR NAME: WYATT HALL.
- 4) THE NEAREST EXISTING WELL IS: SELTZER PP 4-2 JI 123' SW.
- 5) Bearings shown are grid bearings of the Colorado State Plane Coordinate System, North Zone, North American Datum 1983/2007. The lineal dimensions as contained herein are based upon the "U.S. Survey Foot."
- 6) Ground elevations are based on an observed GPS elevation (NAVD 88 DATUM).
- 7) IMPROVEMENTS: See LOCATION DRAWING for all visible improvements within 500' of disturbed area.

SURFACE HOLE:
LATITUDE: 39.999719° N
LONGITUDE: 104.892050° W
PDOP: 1.1
1/4, 1/4: NW1/4NE1/4

LANDING POINT:
LATITUDE: 39.999101° N
LONGITUDE: 104.886158° W

BOTTOM HOLE:
LATITUDE: 39.987796° N
LONGITUDE: 104.886177° W

LEGEND

- - FOUND/SET SURVEY MONUMENT PER MONUMENT RECORD EXCEPTIONS NOTED.
- - CALCULATED SURVEY MONUMENT POSITION
- (c) - CALCULATED DIMENSION



AARON A. DEMO
Professional Land Surveyor Registration No. 38285
State of Colorado
FOR AND ON BEHALF OF BASELINE ENGINEERING CORP.

Completed
10/2/2015

PROJECT #: EXT01S67W04-01