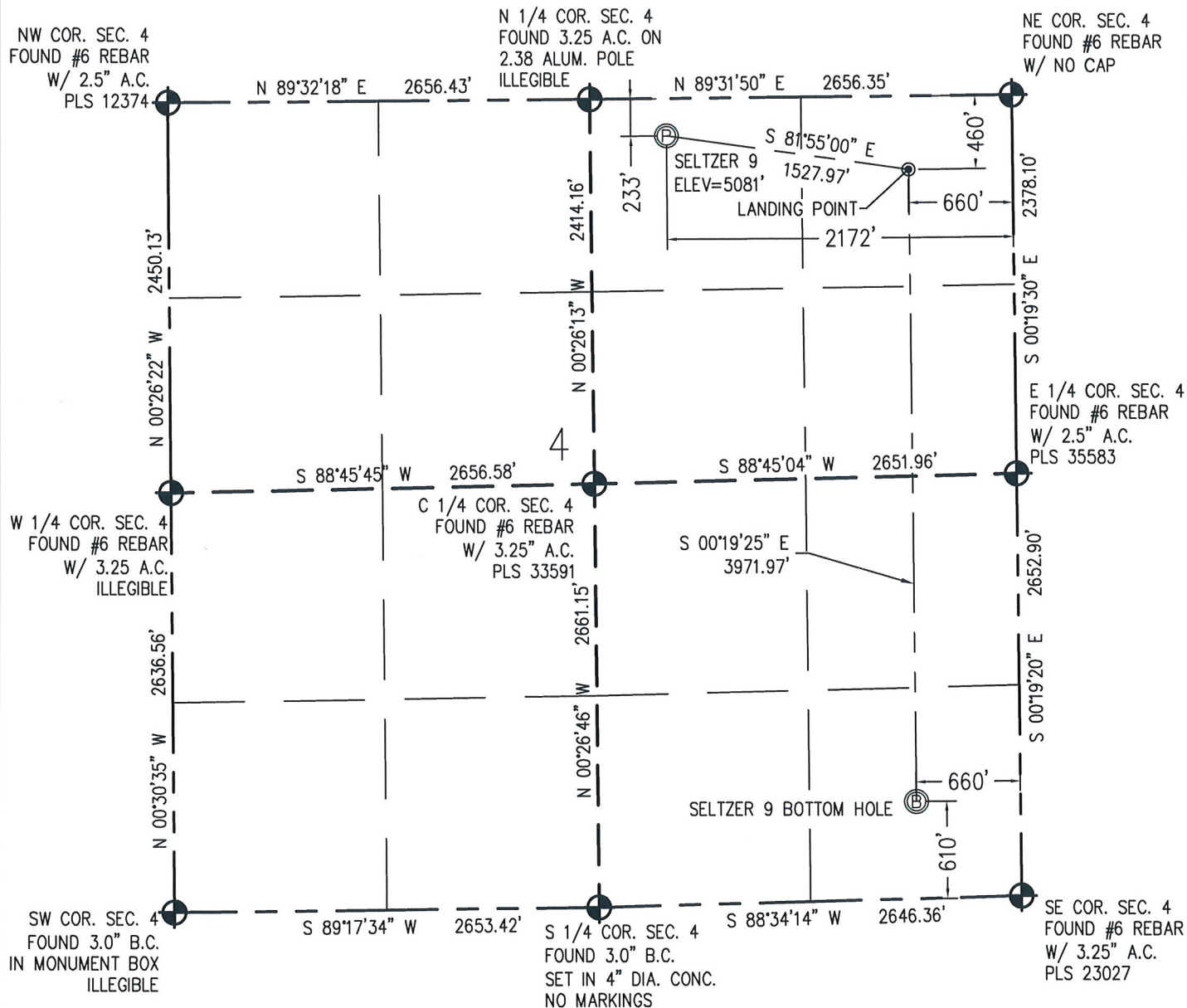


**WELL LOCATION CERTIFICATE**  
THIS MAP DOES NOT REPRESENT A BOUNDARY SURVEY

**N** IN ACCORDANCE WITH A REQUEST FROM JOSEPH SILIPO - EXTRACTION, BASELINE ENGINEERING CORP. HAS DETERMINED THE LOCATION OF THE SELTZER 9 TO BE 233' FNL AND 2172' FEL, AS MEASURED AT NINETY (90) DEGREES FROM THE SECTION LINE OF SECTION 4, TOWNSHIP 1 SOUTH, RANGE 67 WEST AND THE BOTTOM HOLE LOCATION TO BE 610' FSL AND 660' FEL OF SECTION 4, TOWNSHIP 1 SOUTH, RANGE 67 WEST, 6TH PRINCIPAL MERIDIAN, ADAMS COUNTY, COLORADO.

I HEREBY CERTIFY THAT THIS WELL LOCATION CERTIFICATE WAS PREPARED BY ME, OR UNDER MY DIRECT SUPERVISION, THAT THE FIELD WORK WAS COMPLETED ON 8/18/2015, THAT IT IS NOT A LAND SURVEY PLAT OR AN IMPROVEMENT SURVEY PLAT, AND THAT IT IS NOT TO BE RELIED UPON FOR ESTABLISHMENT OF FENCE, BUILDING, OR OTHER FUTURE IMPROVEMENT LINES.

0 1000  
Scale 1" = 1000 ft

**NOTES:**

- 1) NEAREST CULTURAL ITEMS:  
BUILDING: 798' NW  
BUILDING UNIT: 1153' NW  
HIGH OCCUPANCY BUILDING UNIT: 5280'+  
DESIGNATED OUTSIDE ACTIVITY AREA: 5280'+  
PUBLIC ROAD: WELD COUNTY ROAD 2 221' N  
ABOVE GROUND UTILITY: 205' N  
RAILROAD: 5280'+  
PROPERTY LINE: 233' N
- 2) SURFACE USE: NATURAL GRASS.
- 3) OPERATOR NAME: WYATT HALL.
- 4) THE NEAREST EXISTING WELL IS: SELTZER PP 4-2 J 118' S.
- 5) Bearings shown are grid bearings of the Colorado State Plane Coordinate System, North Zone, North American Datum 1983/2007. The lineal dimensions as contained herein are based upon the "U.S. Survey Foot."
- 6) Ground elevations are based on an observed GPS elevation (NAVD 88 DATUM).
- 7) IMPROVEMENTS: See LOCATION DRAWING for all visible improvements within 500' of disturbed area.

**SURFACE HOLE:**  
LATITUDE: 39.999719° N  
LONGITUDE: 104.892139° W  
PDOP: 1.4  
1/4, 1/4: NW1/4NE1/4

**BOTTOM HOLE:**  
LATITUDE: 39.988200° N  
LONGITUDE: 104.886765° W

**LANDING POINT:**  
LATITUDE: 39.999101° N  
LONGITUDE: 104.886747° W

**LEGEND**

- ⊕ - FOUND/SET SURVEY MONUMENT PER MONUMENT RECORD EXCEPTIONS NOTED.
- - CALCULATED SURVEY MONUMENT POSITION
- (c) - CALCULATED DIMENSION



AARON A. DEMO  
Professional Land Surveyor Registration No. 38285  
State of Colorado  
FOR AND ON BEHALF OF BASELINE ENGINEERING CORP.

Completed  
2/10/2016

PROJECT #: EXT01S67W04-01