

EXTRACTION OIL & GAS

WELD COUNTY, COLORADO (NAD 83)

NW NE SEC. 4 T1S R67W 6th P.M.

SELTZER 8

ORIGINAL WELLBORE

13 October, 2015

Plan: PROPOSAL #1



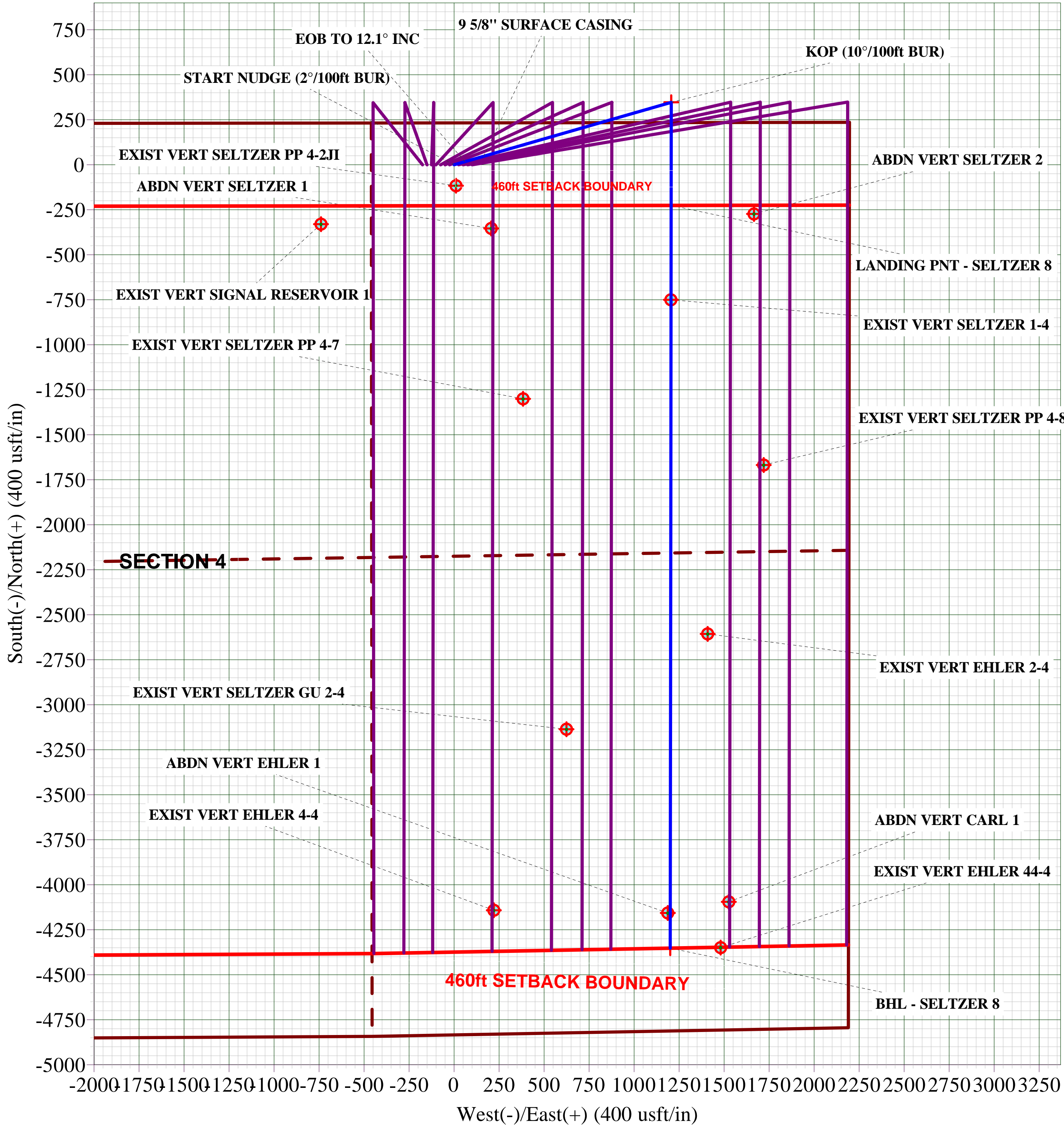
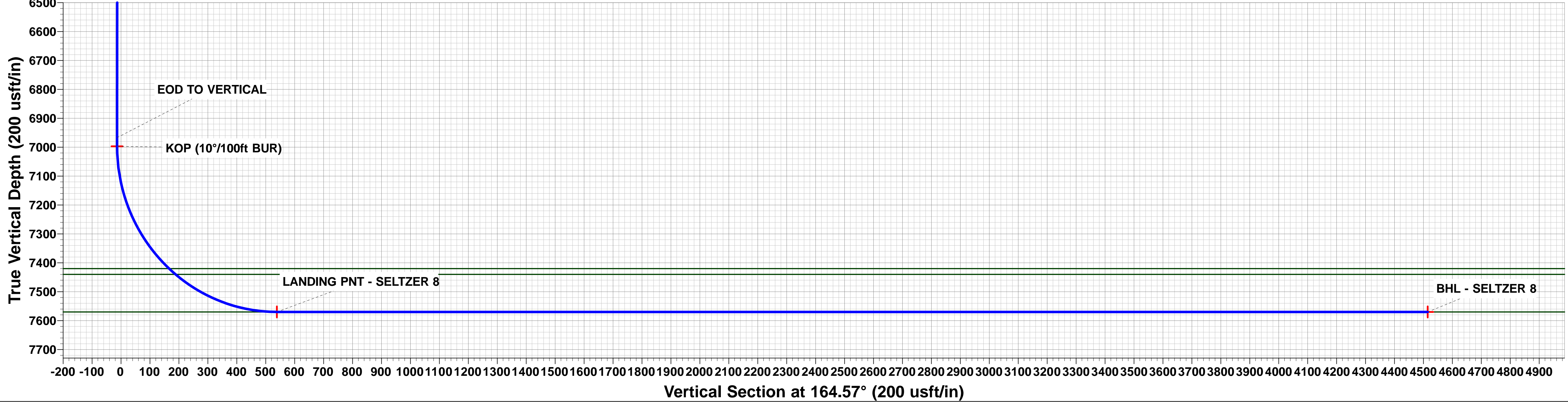
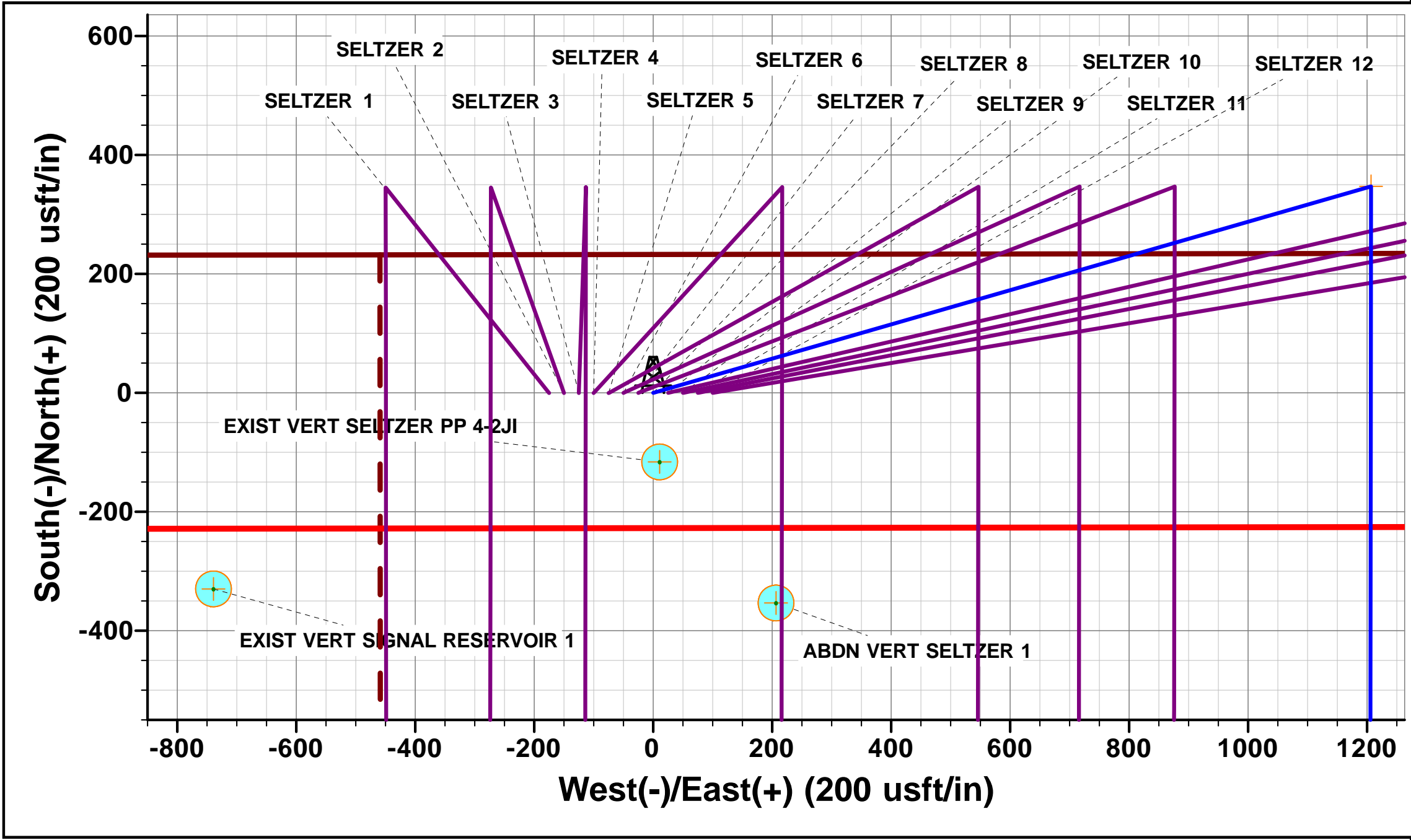
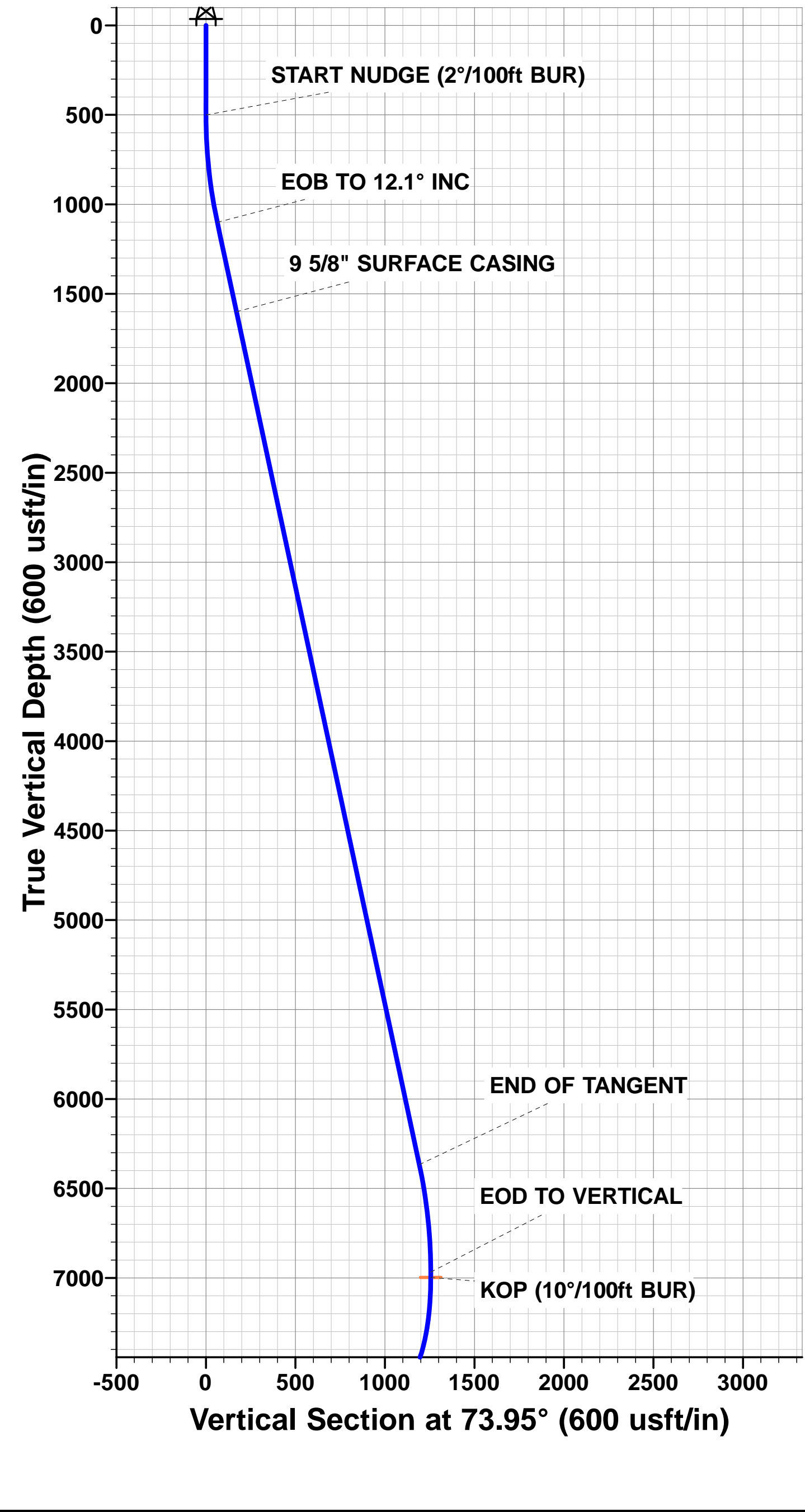


Project: WELD COUNTY, COLORADO (NAD 83)
Site: NW NE SEC. 4 T1S R67W 6th P.M.
Well: SELTZER 8
Wellbore: ORIGINAL WELLBORE
Design: PROPOSAL #1

ANNOTATIONS									
TVD	MD	Inc	Azi	+N/-S	+E/-W	VSect	Dep	Annotation	
500.0	500.0	0.00	0.00	0.0	0.0	0.0	0.0	START NUDGE (2°/100ft BUR)	
1100.3	1104.8	12.10	73.95	17.6	61.1	-0.7	63.6	EOB TO 12.1° INC	
1600.0	1615.8	12.10	73.95	47.2	164.0	-1.9	170.7	9 5/8" SURFACE CASING	
6366.7	6490.8	12.10	73.95	329.6	1145.7	-13.0	1192.2	END OF TANGENT	
6967.0	7095.5	0.00	0.00	347.2	1206.8	-13.7	1255.8	EOD TO VERTICAL	
6997.0	7125.5	0.00	0.00	347.2	1206.8	-13.7	1255.8	KOP (10°/100ft BUR)	
7570.0	8025.6	90.00	180.07	-225.8	1206.1	538.5	1828.7	LANDING PNT - SELTZER 8	
7570.0	12151.8	90.00	180.07	-4352.0	1201.0	4514.7	5955.0	BHL - SELTZER 8	

PROPOSED LOCAL COORDINATES:
SHL: 233ft FNL & 2197ft FEL Sec 4
LANDING PNT: 460ft FNL & 990ft FEL Sec 4
BHL: 460ft FSL & 990ft FEL Sec 4

WELLBORE TARGET DETAILS (LAT/LONG)					
Name	TVD	+N/-S	+E/-W	Latitude	Longitude
KOP - SELTZER 8	6997.0	347.2	1206.8	40.000672	-104.887921
LANDING PNT - SELTZER 8	7570.0	-225.8	1206.1	39.999099	-104.887924
BHL - SELTZER 8	7570.0	-4352.0	1201.0	39.987772	-104.887943



Planning Report



Database:	EDM 5000.1 Single User Db	Local Co-ordinate Reference:	Well SELTZER 8
Company:	EXTRACTION OIL & GAS	TVD Reference:	KB-EST @ 5098.0usft (Original Well Elev)
Project:	WELD COUNTY, COLORADO (NAD 83)	MD Reference:	KB-EST @ 5098.0usft (Original Well Elev)
Site:	NW NE SEC. 4 T1S R67W 6th P.M.	North Reference:	True
Well:	SELTZER 8	Survey Calculation Method:	Minimum Curvature
Wellbore:	ORIGINAL WELLBORE		
Design:	PROPOSAL #1		

Project	WELD COUNTY, COLORADO (NAD 83)		
Map System:	US State Plane 1983	System Datum:	Mean Sea Level
Geo Datum:	North American Datum 1983		
Map Zone:	Colorado Northern Zone		Using geodetic scale factor

Site	NW NE SEC. 4 T1S R67W 6th P.M.		
Site Position:		Northing:	1,243,328.66 usft
From:	Lat/Long	Easting:	3,170,368.61 usft
Position Uncertainty:	0.0 usft	Slot Radius:	1.10000ft
		Latitude:	39.999719
		Longitude:	-104.891872
		Grid Convergence:	0.39 °

Well	SELTZER 8		
Well Position	+N/-S	-0.1 usft	Northing:
	+E/-W	-100.0 usft	Easting:
Position Uncertainty	0.0 usft		Wellhead Elevation:
			Latitude:
			Longitude:
			Ground Level:

Wellbore	ORIGINAL WELLBORE				
Magnetics	Model Name	Sample Date	Declination (°)	Dip Angle (°)	Field Strength (nT)
	IGRF2015	13/10/2015	8.42	66.55	52,358

Design	PROPOSAL #1			
Audit Notes:				
Version:	Phase:	PROTOTYPE	Tie On Depth:	0.0
Vertical Section:	Depth From (TVD) (usft)	+N/-S (usft)	+E/-W (usft)	Direction (°)
	7,570.0	0.0	0.0	164.57

Plan Sections											
MD (usft)	Inc (°)	Azi (°)	Vertical Depth	SS (usft)	+N/-S (usft)	+E/-W (usft)	Dogleg Rate (°/100usft)	Build Rate (°/100usft)	Turn Rate (°/100usft)	TFO (°)	Target
0.0	0.00	0.00	0.0	-5,098.0	0.0	0.0	0.00	0.00	0.00	0.00	
500.0	0.00	0.00	500.0	-4,598.0	0.0	0.0	0.00	0.00	0.00	0.00	
1,104.8	12.10	73.95	1,100.3	-3,997.7	17.6	61.1	2.00	2.00	0.00	73.95	
6,490.8	12.10	73.95	6,366.7	1,268.7	329.6	1,145.7	0.00	0.00	0.00	0.00	
7,095.5	0.00	0.00	6,967.0	1,869.0	347.2	1,206.8	2.00	-2.00	0.00	180.00	
7,125.5	0.00	0.00	6,997.0	1,899.0	347.2	1,206.8	0.00	0.00	0.00	0.00	KOP - SELTZER 8
8,025.6	90.00	180.07	7,570.0	2,472.0	-225.8	1,206.1	10.00	10.00	-19.99	180.07	LANDING PNT - SE
12,151.8	90.00	180.07	7,570.0	2,472.0	-4,352.0	1,201.0	0.00	0.00	0.00	52.78	BHL - SELTZER 8

Planning Report



Database:	EDM 5000.1 Single User Db	Local Co-ordinate Reference:	Well SELTZER 8
Company:	EXTRACTION OIL & GAS	TVD Reference:	KB-EST @ 5098.0usft (Original Well Elev)
Project:	WELD COUNTY, COLORADO (NAD 83)	MD Reference:	KB-EST @ 5098.0usft (Original Well Elev)
Site:	NW NE SEC. 4 T1S R67W 6th P.M.	North Reference:	True
Well:	SELTZER 8	Survey Calculation Method:	Minimum Curvature
Wellbore:	ORIGINAL WELLBORE		
Design:	PROPOSAL #1		

Planned Survey

MD (usft)	Inc (°)	Azi (°)	TVD (usft)	SS (usft)	+N/-S (usft)	+E/-W (usft)	Vertical Section (usft)	Dogleg Rate (°/100usft)	Build Rate (°/100usft)	Turn Rate (°/100usft)
0.0	0.00	0.00	0.0	5,098.00	0.0	0.0	0.0	0.00	0.00	0.00
100.0	0.00	0.00	100.0	4,998.00	0.0	0.0	0.0	0.00	0.00	0.00
200.0	0.00	0.00	200.0	4,898.00	0.0	0.0	0.0	0.00	0.00	0.00
300.0	0.00	0.00	300.0	4,798.00	0.0	0.0	0.0	0.00	0.00	0.00
400.0	0.00	0.00	400.0	4,698.00	0.0	0.0	0.0	0.00	0.00	0.00
START NUDGE (2°/100ft BUR)										
500.0	0.00	0.00	500.0	4,598.00	0.0	0.0	0.0	0.00	0.00	0.00
600.0	2.00	73.95	600.0	4,498.02	0.5	1.7	0.0	2.00	2.00	0.00
700.0	4.00	73.95	699.8	4,398.16	1.9	6.7	-0.1	2.00	2.00	0.00
800.0	6.00	73.95	799.5	4,298.55	4.3	15.1	-0.2	2.00	2.00	0.00
900.0	8.00	73.95	898.7	4,199.30	7.7	26.8	-0.3	2.00	2.00	0.00
1,000.0	10.00	73.95	997.5	4,100.53	12.0	41.8	-0.5	2.00	2.00	0.00
1,100.0	12.00	73.95	1,095.6	4,002.38	17.3	60.2	-0.7	2.00	2.00	0.00
EOB TO 12.1° INC										
1,104.8	12.10	73.95	1,100.3	3,997.72	17.6	61.1	-0.7	2.00	2.00	0.00
1,200.0	12.10	73.95	1,193.4	3,904.60	23.1	80.3	-0.9	0.00	0.00	0.00
1,300.0	12.10	73.95	1,291.2	3,806.82	28.9	100.4	-1.1	0.00	0.00	0.00
1,400.0	12.10	73.95	1,389.0	3,709.04	34.7	120.6	-1.4	0.00	0.00	0.00
1,500.0	12.10	73.95	1,486.7	3,611.26	40.5	140.7	-1.6	0.00	0.00	0.00
1,600.0	12.10	73.95	1,584.5	3,513.48	46.3	160.8	-1.8	0.00	0.00	0.00
9 5/8" SURFACE CASING										
1,615.8	12.10	73.95	1,600.0	3,498.00	47.2	164.0	-1.9	0.00	0.00	0.00
1,700.0	12.10	73.95	1,682.3	3,415.70	52.1	181.0	-2.0	0.00	0.00	0.00
1,800.0	12.10	73.95	1,780.1	3,317.92	57.9	201.1	-2.3	0.00	0.00	0.00
1,900.0	12.10	73.95	1,877.9	3,220.14	63.7	221.3	-2.5	0.00	0.00	0.00
2,000.0	12.10	73.95	1,975.6	3,122.36	69.4	241.4	-2.7	0.00	0.00	0.00
2,100.0	12.10	73.95	2,073.4	3,024.58	75.2	261.5	-3.0	0.00	0.00	0.00
2,200.0	12.10	73.95	2,171.2	2,926.79	81.0	281.7	-3.2	0.00	0.00	0.00
2,300.0	12.10	73.95	2,269.0	2,829.01	86.8	301.8	-3.4	0.00	0.00	0.00
2,400.0	12.10	73.95	2,366.8	2,731.23	92.6	321.9	-3.6	0.00	0.00	0.00
2,500.0	12.10	73.95	2,464.5	2,633.45	98.4	342.1	-3.9	0.00	0.00	0.00
2,600.0	12.10	73.95	2,562.3	2,535.67	104.2	362.2	-4.1	0.00	0.00	0.00
2,700.0	12.10	73.95	2,660.1	2,437.89	110.0	382.3	-4.3	0.00	0.00	0.00
2,800.0	12.10	73.95	2,757.9	2,340.11	115.8	402.5	-4.6	0.00	0.00	0.00
2,900.0	12.10	73.95	2,855.7	2,242.33	121.6	422.6	-4.8	0.00	0.00	0.00
3,000.0	12.10	73.95	2,953.4	2,144.55	127.4	442.8	-5.0	0.00	0.00	0.00
3,100.0	12.10	73.95	3,051.2	2,046.77	133.2	462.9	-5.2	0.00	0.00	0.00
3,200.0	12.10	73.95	3,149.0	1,948.99	139.0	483.0	-5.5	0.00	0.00	0.00
3,300.0	12.10	73.95	3,246.8	1,851.21	144.8	503.2	-5.7	0.00	0.00	0.00
3,400.0	12.10	73.95	3,344.6	1,753.43	150.6	523.3	-5.9	0.00	0.00	0.00
3,500.0	12.10	73.95	3,442.3	1,655.65	156.3	543.4	-6.2	0.00	0.00	0.00
3,600.0	12.10	73.95	3,540.1	1,557.87	162.1	563.6	-6.4	0.00	0.00	0.00
3,700.0	12.10	73.95	3,637.9	1,460.09	167.9	583.7	-6.6	0.00	0.00	0.00
3,800.0	12.10	73.95	3,735.7	1,362.31	173.7	603.9	-6.8	0.00	0.00	0.00
3,900.0	12.10	73.95	3,833.5	1,264.53	179.5	624.0	-7.1	0.00	0.00	0.00
4,000.0	12.10	73.95	3,931.2	1,166.75	185.3	644.1	-7.3	0.00	0.00	0.00
4,100.0	12.10	73.95	4,029.0	1,068.97	191.1	664.3	-7.5	0.00	0.00	0.00
4,200.0	12.10	73.95	4,126.8	971.19	196.9	684.4	-7.7	0.00	0.00	0.00
PARKMAN										
4,203.3	12.10	73.95	4,130.0	968.00	197.1	685.1	-7.8	0.00	0.00	0.00
4,300.0	12.10	73.95	4,224.6	873.41	202.7	704.5	-8.0	0.00	0.00	0.00
4,400.0	12.10	73.95	4,322.4	775.63	208.5	724.7	-8.2	0.00	0.00	0.00
4,500.0	12.10	73.95	4,420.1	677.85	214.3	744.8	-8.4	0.00	0.00	0.00
4,600.0	12.10	73.95	4,517.9	580.07	220.1	764.9	-8.7	0.00	0.00	0.00

Database:	EDM 5000.1 Single User Db	Local Co-ordinate Reference:	Well SELTZER 8
Company:	EXTRACTION OIL & GAS	TVD Reference:	KB-EST @ 5098.0usft (Original Well Elev)
Project:	WELD COUNTY, COLORADO (NAD 83)	MD Reference:	KB-EST @ 5098.0usft (Original Well Elev)
Site:	NW NE SEC. 4 T1S R67W 6th P.M.	North Reference:	True
Well:	SELTZER 8	Survey Calculation Method:	Minimum Curvature
Wellbore:	ORIGINAL WELLBORE		
Design:	PROPOSAL #1		

Planned Survey

MD (usft)	Inc (°)	Azi (°)	TVD (usft)	SS (usft)	+N/-S (usft)	+E/-W (usft)	Vertical Section (usft)	Dogleg Rate (°/100usft)	Build Rate (°/100usft)	Turn Rate (°/100usft)
4,700.0	12.10	73.95	4,615.7	482.29	225.9	785.1	-8.9	0.00	0.00	0.00
4,800.0	12.10	73.95	4,713.5	384.51	231.7	805.2	-9.1	0.00	0.00	0.00
4,900.0	12.10	73.95	4,811.3	286.73	237.5	825.4	-9.3	0.00	0.00	0.00
5,000.0	12.10	73.95	4,909.0	188.95	243.3	845.5	-9.6	0.00	0.00	0.00
SUSSEX										
5,062.3	12.10	73.95	4,970.0	128.00	246.9	858.0	-9.7	0.00	0.00	0.00
5,100.0	12.10	73.95	5,006.8	91.17	249.0	865.6	-9.8	0.00	0.00	0.00
5,200.0	12.10	73.95	5,104.6	-6.61	254.8	885.8	-10.0	0.00	0.00	0.00
5,300.0	12.10	73.95	5,202.4	-104.39	260.6	905.9	-10.3	0.00	0.00	0.00
5,400.0	12.10	73.95	5,300.2	-202.17	266.4	926.0	-10.5	0.00	0.00	0.00
5,500.0	12.10	73.95	5,397.9	-299.95	272.2	946.2	-10.7	0.00	0.00	0.00
5,600.0	12.10	73.95	5,495.7	-397.73	278.0	966.3	-10.9	0.00	0.00	0.00
5,700.0	12.10	73.95	5,593.5	-495.51	283.8	986.4	-11.2	0.00	0.00	0.00
5,800.0	12.10	73.95	5,691.3	-593.29	289.6	1,006.6	-11.4	0.00	0.00	0.00
5,900.0	12.10	73.95	5,789.1	-691.07	295.4	1,026.7	-11.6	0.00	0.00	0.00
6,000.0	12.10	73.95	5,886.8	-788.85	301.2	1,046.9	-11.8	0.00	0.00	0.00
6,100.0	12.10	73.95	5,984.6	-886.63	307.0	1,067.0	-12.1	0.00	0.00	0.00
6,200.0	12.10	73.95	6,082.4	-984.41	312.8	1,087.1	-12.3	0.00	0.00	0.00
6,300.0	12.10	73.95	6,180.2	-1,082.19	318.6	1,107.3	-12.5	0.00	0.00	0.00
6,400.0	12.10	73.95	6,278.0	-1,179.97	324.4	1,127.4	-12.8	0.00	0.00	0.00
SHANNON										
6,402.1	12.10	73.95	6,280.0	-1,182.00	324.5	1,127.8	-12.8	0.00	0.00	0.00
END OF TANGENT										
6,490.8	12.10	73.95	6,366.7	-1,268.72	329.6	1,145.7	-13.0	0.00	0.00	0.00
6,500.0	11.91	73.95	6,375.8	-1,277.75	330.1	1,147.5	-13.0	2.00	-2.00	0.00
6,600.0	9.91	73.95	6,473.9	-1,375.94	335.4	1,165.7	-13.2	2.00	-2.00	0.00
6,700.0	7.91	73.95	6,572.7	-1,474.73	339.7	1,180.6	-13.4	2.00	-2.00	0.00
6,800.0	5.91	73.95	6,672.0	-1,574.00	343.0	1,192.2	-13.5	2.00	-2.00	0.00
6,900.0	3.91	73.95	6,771.6	-1,673.62	345.4	1,200.4	-13.6	2.00	-2.00	0.00
7,000.0	1.91	73.95	6,871.5	-1,773.49	346.8	1,205.3	-13.6	2.00	-2.00	0.00
EOD TO VERTICAL										
7,095.5	0.00	0.00	6,967.0	-1,869.00	347.2	1,206.8	-13.7	2.00	-2.00	0.00
7,100.0	0.00	0.00	6,971.5	-1,873.47	347.2	1,206.8	-13.7	0.00	0.00	0.00
KOP (10°/100ft BUR)										
7,125.5	0.00	0.00	6,997.0	-1,899.00	347.2	1,206.8	-13.7	0.00	0.00	0.00
7,200.0	7.45	180.07	7,071.3	-1,973.26	342.4	1,206.8	-9.0	10.00	10.00	0.00
7,300.0	17.45	180.07	7,168.8	-2,070.79	320.8	1,206.8	11.7	10.00	10.00	0.00
7,400.0	27.45	180.07	7,261.1	-2,163.10	282.7	1,206.7	48.5	10.00	10.00	0.00
7,500.0	37.44	180.07	7,345.4	-2,247.38	229.1	1,206.7	100.1	10.00	10.00	0.00
7,600.0	47.44	180.07	7,419.1	-2,321.08	161.7	1,206.6	165.1	10.00	10.00	0.00
SHARON SPRINGS										
7,601.4	47.58	180.07	7,420.0	-2,322.00	160.7	1,206.6	166.0	10.00	10.00	0.00
NIOBRARA										
7,631.9	50.64	180.07	7,440.0	-2,342.00	137.6	1,206.6	188.3	10.00	10.00	0.00
7,700.0	57.44	180.07	7,480.0	-2,381.96	82.6	1,206.5	241.4	10.00	10.00	0.00
7,800.0	67.44	180.07	7,526.2	-2,428.16	-6.0	1,206.4	326.7	10.00	10.00	0.00
7,900.0	77.44	180.07	7,556.3	-2,458.29	-101.2	1,206.3	418.5	10.00	10.00	0.00
8,000.0	87.44	180.07	7,569.4	-2,471.43	-200.2	1,206.1	513.9	10.00	10.00	0.00
LANDING PNT - SELTZER 8 - NIO B										
8,025.6	90.00	180.07	7,570.0	-2,472.00	-225.8	1,206.1	538.5	10.00	10.00	0.00
8,100.0	90.00	180.07	7,570.0	-2,472.00	-300.2	1,206.0	610.2	0.00	0.00	0.00
8,200.0	90.00	180.07	7,570.0	-2,472.01	-400.2	1,205.9	706.6	0.00	0.00	0.00
8,300.0	90.00	180.07	7,570.0	-2,472.01	-500.2	1,205.8	802.9	0.00	0.00	0.00

Database:	EDM 5000.1 Single User Db	Local Co-ordinate Reference:	Well SELTZER 8
Company:	EXTRACTION OIL & GAS	TVD Reference:	KB-EST @ 5098.0usft (Original Well Elev)
Project:	WELD COUNTY, COLORADO (NAD 83)	MD Reference:	KB-EST @ 5098.0usft (Original Well Elev)
Site:	NW NE SEC. 4 T1S R67W 6th P.M.	North Reference:	True
Well:	SELTZER 8	Survey Calculation Method:	Minimum Curvature
Wellbore:	ORIGINAL WELLBORE		
Design:	PROPOSAL #1		

Planned Survey

MD (usft)	Inc (°)	Azi (°)	TVD (usft)	SS (usft)	+N/-S (usft)	+E/-W (usft)	Vertical Section (usft)	Dogleg Rate (°/100usft)	Build Rate (°/100usft)	Turn Rate (°/100usft)
8,400.0	90.00	180.07	7,570.0	-2,472.01	-600.2	1,205.7	899.3	0.00	0.00	0.00
8,500.0	90.00	180.07	7,570.0	-2,472.02	-700.2	1,205.5	995.7	0.00	0.00	0.00
8,600.0	90.00	180.07	7,570.0	-2,472.02	-800.2	1,205.4	1,092.0	0.00	0.00	0.00
8,700.0	90.00	180.07	7,570.0	-2,472.02	-900.2	1,205.3	1,188.4	0.00	0.00	0.00
8,800.0	90.00	180.07	7,570.0	-2,472.02	-1,000.2	1,205.2	1,284.8	0.00	0.00	0.00
8,900.0	90.00	180.07	7,570.0	-2,472.03	-1,100.2	1,205.1	1,381.1	0.00	0.00	0.00
9,000.0	90.00	180.07	7,570.0	-2,472.03	-1,200.2	1,204.9	1,477.5	0.00	0.00	0.00
9,100.0	90.00	180.07	7,570.0	-2,472.03	-1,300.2	1,204.8	1,573.9	0.00	0.00	0.00
9,200.0	90.00	180.07	7,570.0	-2,472.03	-1,400.2	1,204.7	1,670.2	0.00	0.00	0.00
9,300.0	90.00	180.07	7,570.0	-2,472.03	-1,500.2	1,204.6	1,766.6	0.00	0.00	0.00
9,400.0	90.00	180.07	7,570.0	-2,472.04	-1,600.2	1,204.5	1,863.0	0.00	0.00	0.00
9,500.0	90.00	180.07	7,570.0	-2,472.04	-1,700.2	1,204.3	1,959.3	0.00	0.00	0.00
9,600.0	90.00	180.07	7,570.0	-2,472.04	-1,800.2	1,204.2	2,055.7	0.00	0.00	0.00
9,700.0	90.00	180.07	7,570.0	-2,472.04	-1,900.2	1,204.1	2,152.0	0.00	0.00	0.00
9,800.0	90.00	180.07	7,570.0	-2,472.04	-2,000.2	1,204.0	2,248.4	0.00	0.00	0.00
9,900.0	90.00	180.07	7,570.0	-2,472.04	-2,100.2	1,203.8	2,344.8	0.00	0.00	0.00
10,000.0	90.00	180.07	7,570.0	-2,472.04	-2,200.2	1,203.7	2,441.1	0.00	0.00	0.00
10,100.0	90.00	180.07	7,570.0	-2,472.04	-2,300.2	1,203.6	2,537.5	0.00	0.00	0.00
10,200.0	90.00	180.07	7,570.0	-2,472.04	-2,400.2	1,203.5	2,633.9	0.00	0.00	0.00
10,300.0	90.00	180.07	7,570.0	-2,472.04	-2,500.2	1,203.3	2,730.2	0.00	0.00	0.00
10,400.0	90.00	180.07	7,570.0	-2,472.04	-2,600.2	1,203.2	2,826.6	0.00	0.00	0.00
10,500.0	90.00	180.07	7,570.0	-2,472.04	-2,700.2	1,203.1	2,923.0	0.00	0.00	0.00
10,600.0	90.00	180.07	7,570.0	-2,472.04	-2,800.2	1,203.0	3,019.3	0.00	0.00	0.00
10,700.0	90.00	180.07	7,570.0	-2,472.04	-2,900.2	1,202.8	3,115.7	0.00	0.00	0.00
10,800.0	90.00	180.07	7,570.0	-2,472.04	-3,000.2	1,202.7	3,212.0	0.00	0.00	0.00
10,900.0	90.00	180.07	7,570.0	-2,472.03	-3,100.2	1,202.6	3,308.4	0.00	0.00	0.00
11,000.0	90.00	180.07	7,570.0	-2,472.03	-3,200.2	1,202.5	3,404.8	0.00	0.00	0.00
11,100.0	90.00	180.07	7,570.0	-2,472.03	-3,300.2	1,202.3	3,501.1	0.00	0.00	0.00
11,200.0	90.00	180.07	7,570.0	-2,472.03	-3,400.2	1,202.2	3,597.5	0.00	0.00	0.00
11,300.0	90.00	180.07	7,570.0	-2,472.03	-3,500.2	1,202.1	3,693.9	0.00	0.00	0.00
11,400.0	90.00	180.07	7,570.0	-2,472.02	-3,600.2	1,202.0	3,790.2	0.00	0.00	0.00
11,500.0	90.00	180.07	7,570.0	-2,472.02	-3,700.2	1,201.8	3,886.6	0.00	0.00	0.00
11,600.0	90.00	180.07	7,570.0	-2,472.02	-3,800.2	1,201.7	3,982.9	0.00	0.00	0.00
11,700.0	90.00	180.07	7,570.0	-2,472.02	-3,900.2	1,201.6	4,079.3	0.00	0.00	0.00
11,800.0	90.00	180.07	7,570.0	-2,472.01	-4,000.2	1,201.4	4,175.7	0.00	0.00	0.00
11,900.0	90.00	180.07	7,570.0	-2,472.01	-4,100.2	1,201.3	4,272.0	0.00	0.00	0.00
12,000.0	90.00	180.07	7,570.0	-2,472.01	-4,200.2	1,201.2	4,368.4	0.00	0.00	0.00
12,100.0	90.00	180.07	7,570.0	-2,472.00	-4,300.2	1,201.1	4,464.8	0.00	0.00	0.00
BHL - SELTZER 8										
12,151.8	90.00	180.07	7,570.0	-2,472.00	-4,352.0	1,201.0	4,514.7	0.00	0.00	0.00

Database:	EDM 5000.1 Single User Db	Local Co-ordinate Reference:	Well SELTZER 8
Company:	EXTRACTION OIL & GAS	TVD Reference:	KB-EST @ 5098.0usft (Original Well Elev)
Project:	WELD COUNTY, COLORADO (NAD 83)	MD Reference:	KB-EST @ 5098.0usft (Original Well Elev)
Site:	NW NE SEC. 4 T1S R67W 6th P.M.	North Reference:	True
Well:	SELTZER 8	Survey Calculation Method:	Minimum Curvature
Wellbore:	ORIGINAL WELLBORE		
Design:	PROPOSAL #1		

Formations					
MD (usft)	TVD (usft)	Name	Lithology	Dip (°)	Dip Direction (°)
4,203.3	4,130.0	PARKMAN			
5,062.3	4,970.0	SUSSEX			
6,402.1	6,280.0	SHANNON			
7,601.4	7,420.0	SHARON SPRINGS			
7,631.9	7,440.0	NIOBRARA			
8,025.6	7,570.0	NIO B			

Plan Annotations				
MD (usft)	TVD (usft)	Local Coordinates		Comment
		+N/-S (usft)	+E/-W (usft)	
500.0	500.0	0.0	0.0	START NUDGE (2°/100ft BUR)
1,104.8	1,100.3	17.6	61.1	EOB TO 12.1° INC
1,615.8	1,600.0	47.2	164.0	9 5/8" SURFACE CASING
6,490.8	6,366.7	329.6	1,145.7	END OF TANGENT
7,095.5	6,967.0	347.2	1,206.8	EOD TO VERTICAL
7,125.5	6,997.0	347.2	1,206.8	KOP (10°/100ft BUR)
8,025.6	7,570.0	-225.8	1,206.1	LANDING PNT - SELTZER 8
12,151.8	7,570.0	-4,352.0	1,201.0	BHL - SELTZER 8