



February 17, 2016

VIA ELECTRONIC TRANSMITTAL

Director Matt Lepore
Colorado Oil and Gas Conservation Commission
1120 Lincoln Street Suite 801
Denver, Colorado 80203

RE: Rule 318.A.e.
Seltzer 4
Seltzer 5
Seltzer 6
Seltzer 7
Seltzer 8
Seltzer 9
Seltzer 10

Surface Location: NWNE, Section 4, Township 1 South, Range 67 West, Adams County, CO

Dear Mr. Lepore,

Extraction Oil and Gas is planning to drill the captioned horizontal wells in accordance with the provision of COGCC Rule 318A.e.

The proposed wellbore spacing unit consists of:

Section 4-1S-67W: E/2

The spacing unit is a 320-acre wellbore spacing unit for the Niobrara and Codell formations.

Extraction Oil and Gas hereby certifies to the Director that all Owners within the proposed spacing unit above were notified and 30 days have passed without objection.

If you have any questions or issues regarding this permit, please contact Alyssa Andrews at 720-420-5749.

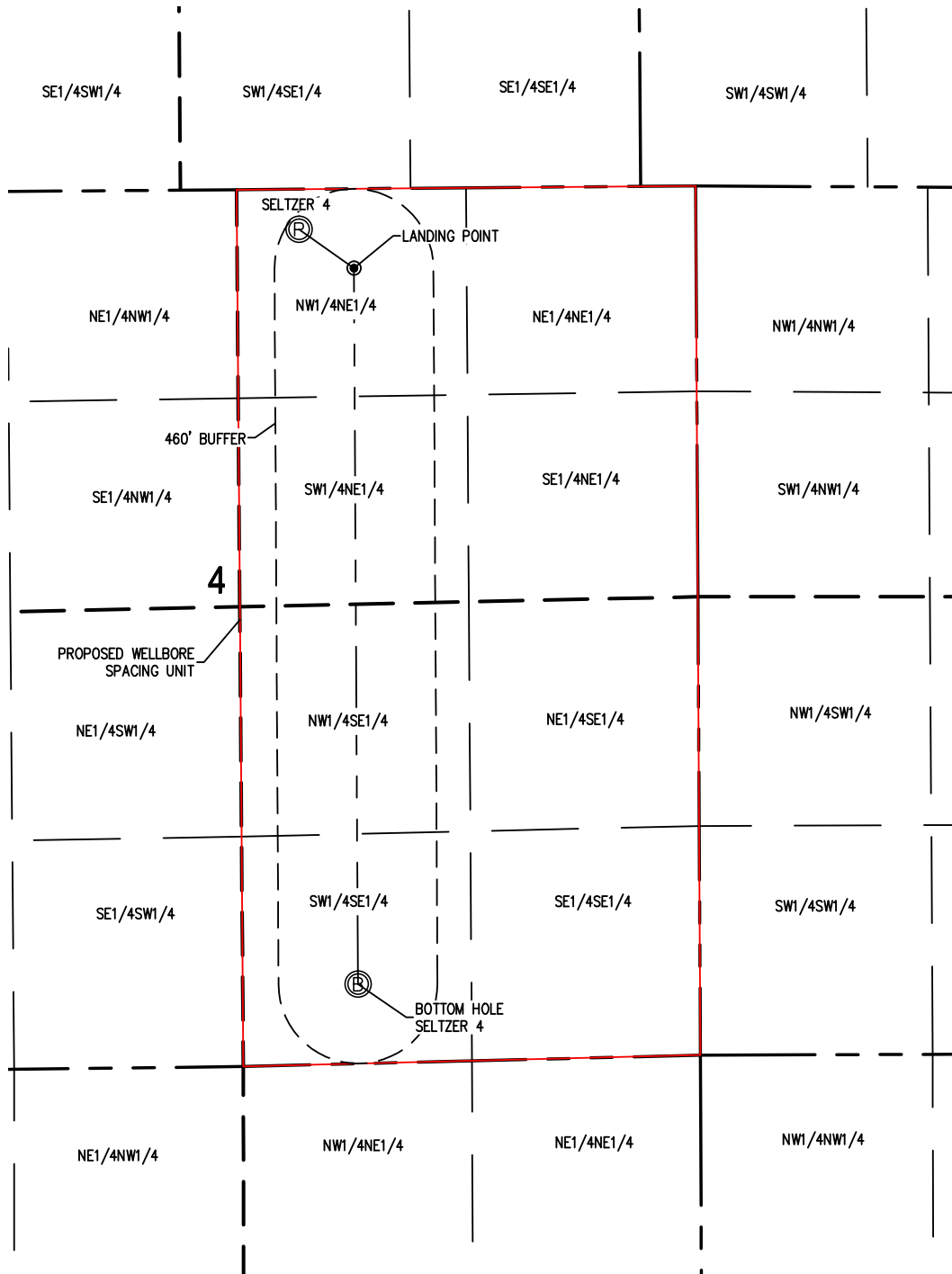
Respectfully,

Alyssa Andrews
Agent for Extraction Oil and Gas

WELL BORE SPACING UNIT

SELTZER 4

SECTION 4
TOWNSHIP 1 SOUTH
RANGE 67 WEST



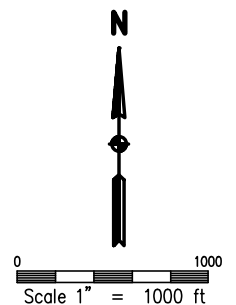
SURFACE HOLE:
LATITUDE: 39.999718° N
LONGITUDE: 104.892586° W

LANDING POINT:
LATITUDE: 39.999096° N
LONGITUDE: 104.891457° W

BOTTOM HOLE:
LATITUDE: 39.987723° N
LONGITUDE: 104.891475° W

NOTES:

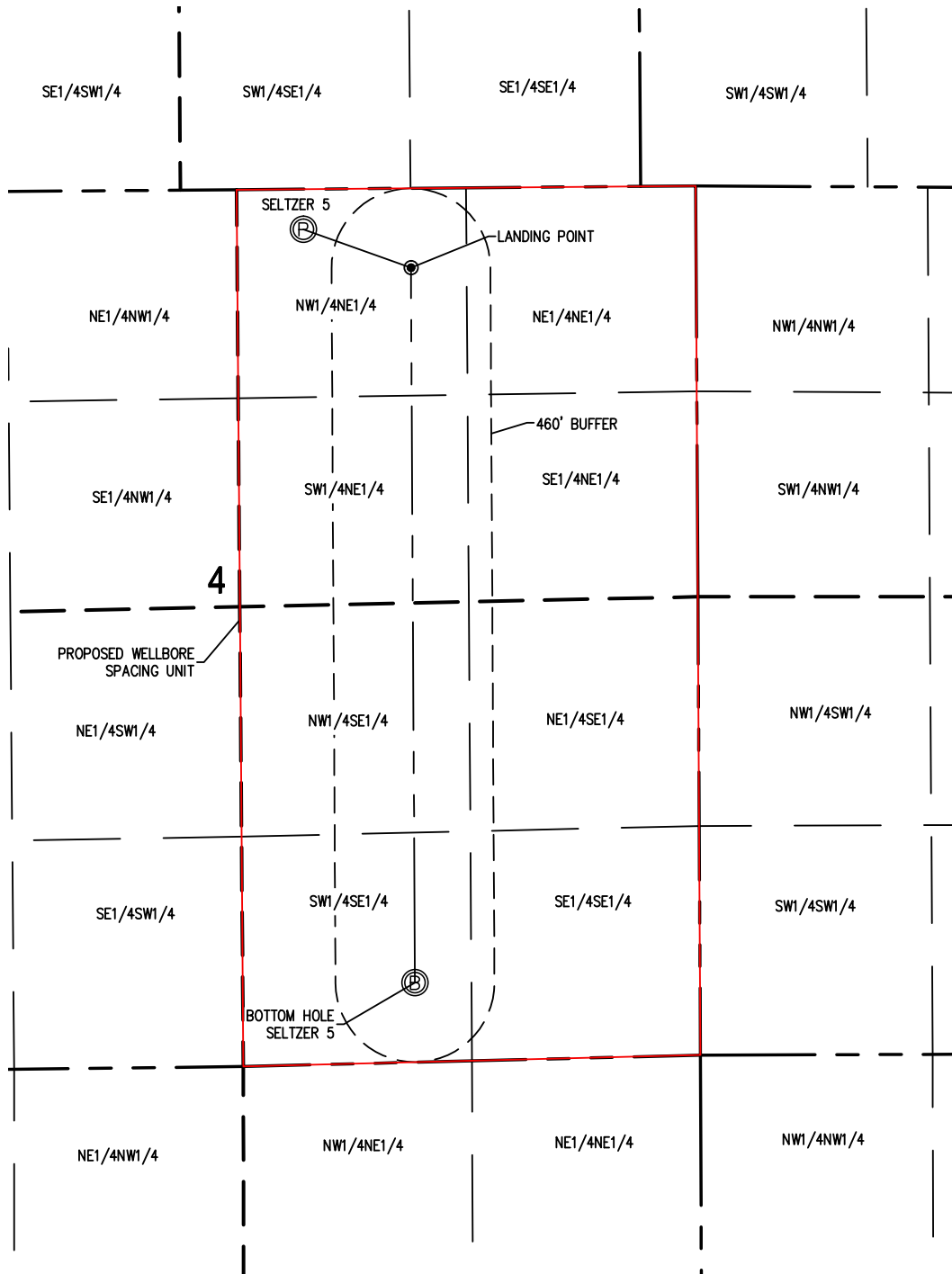
- 1) THIS SKETCH DOES NOT REPRESENT A BOUNDARY SURVEY.
- 2) THE DATUM FOR THE LATITUDES AND LONGITUDES ON THIS SKETCH IS NAD83.



WELL BORE SPACING UNIT

SELTZER 5

SECTION 4
TOWNSHIP 1 SOUTH
RANGE 67 WEST

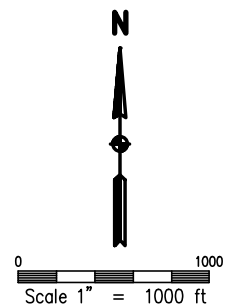


SURFACE HOLE:
LATITUDE: 39.999718° N
LONGITUDE: 104.892496° W
BOTTOM HOLE:
LATITUDE: 39.987739° N
LONGITUDE: 104.890298° W

LANDING POINT:
LATITUDE: 39.999097° N
LONGITUDE: 104.890279° W

NOTES:

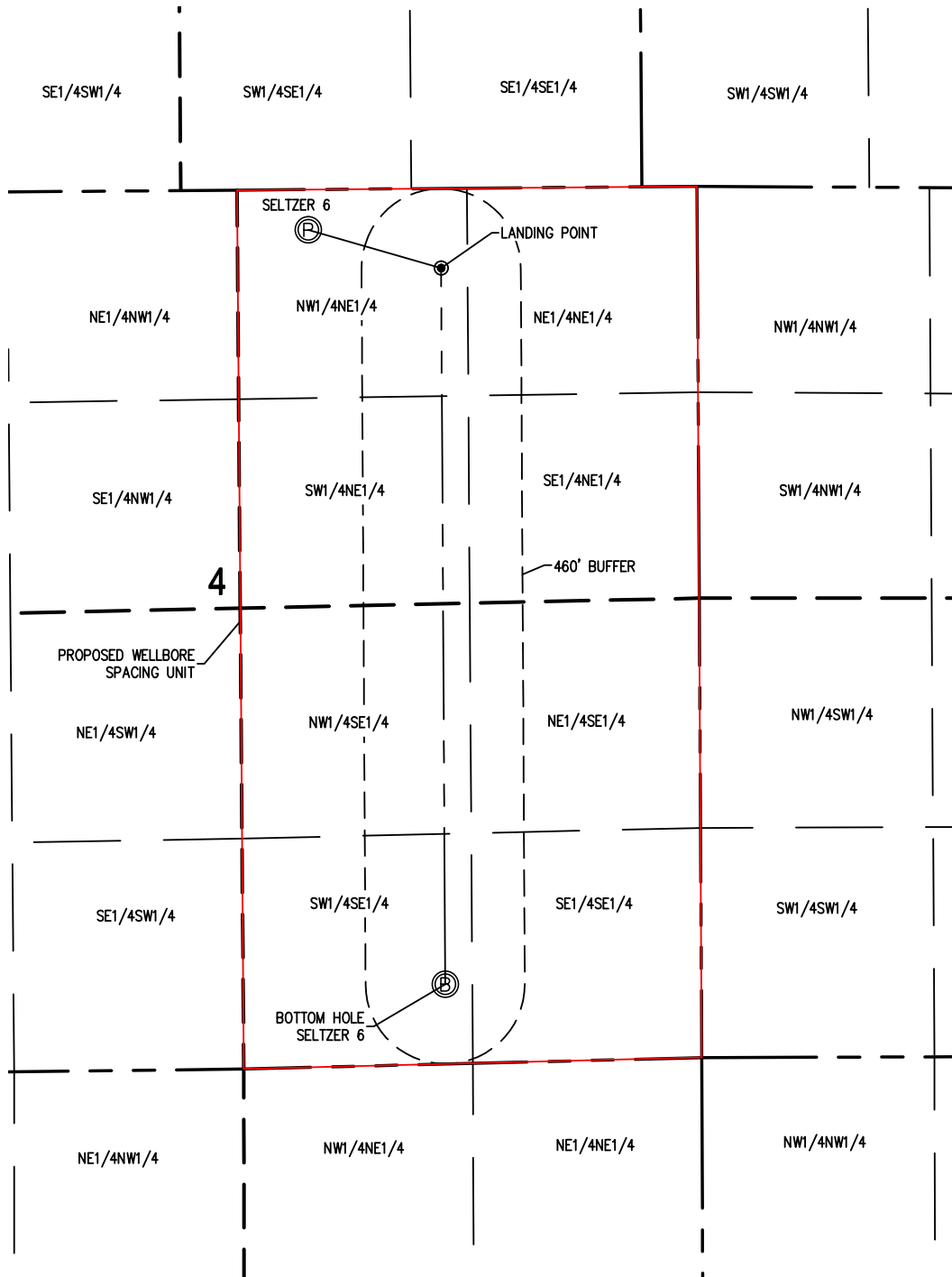
- 1) THIS SKETCH DOES NOT REPRESENT A BOUNDARY SURVEY.
- 2) THE DATUM FOR THE LATITUDES AND LONGITUDES ON THIS SKETCH IS NAD83.



WELL BORE SPACING UNIT

SELTZER 6

SECTION 4
TOWNSHIP 1 SOUTH
RANGE 67 WEST



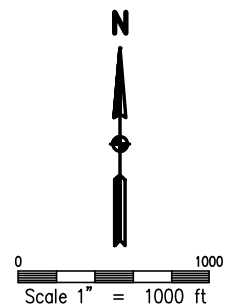
SURFACE HOLE:
LATITUDE: 39.999719° N
LONGITUDE: 104.892407° W

LANDING POINT:
LATITUDE: 39.999098° N
LONGITUDE: 104.889673° W

BOTTOM HOLE:
LATITUDE: 39.987748° N
LONGITUDE: 104.889691° W

NOTES:

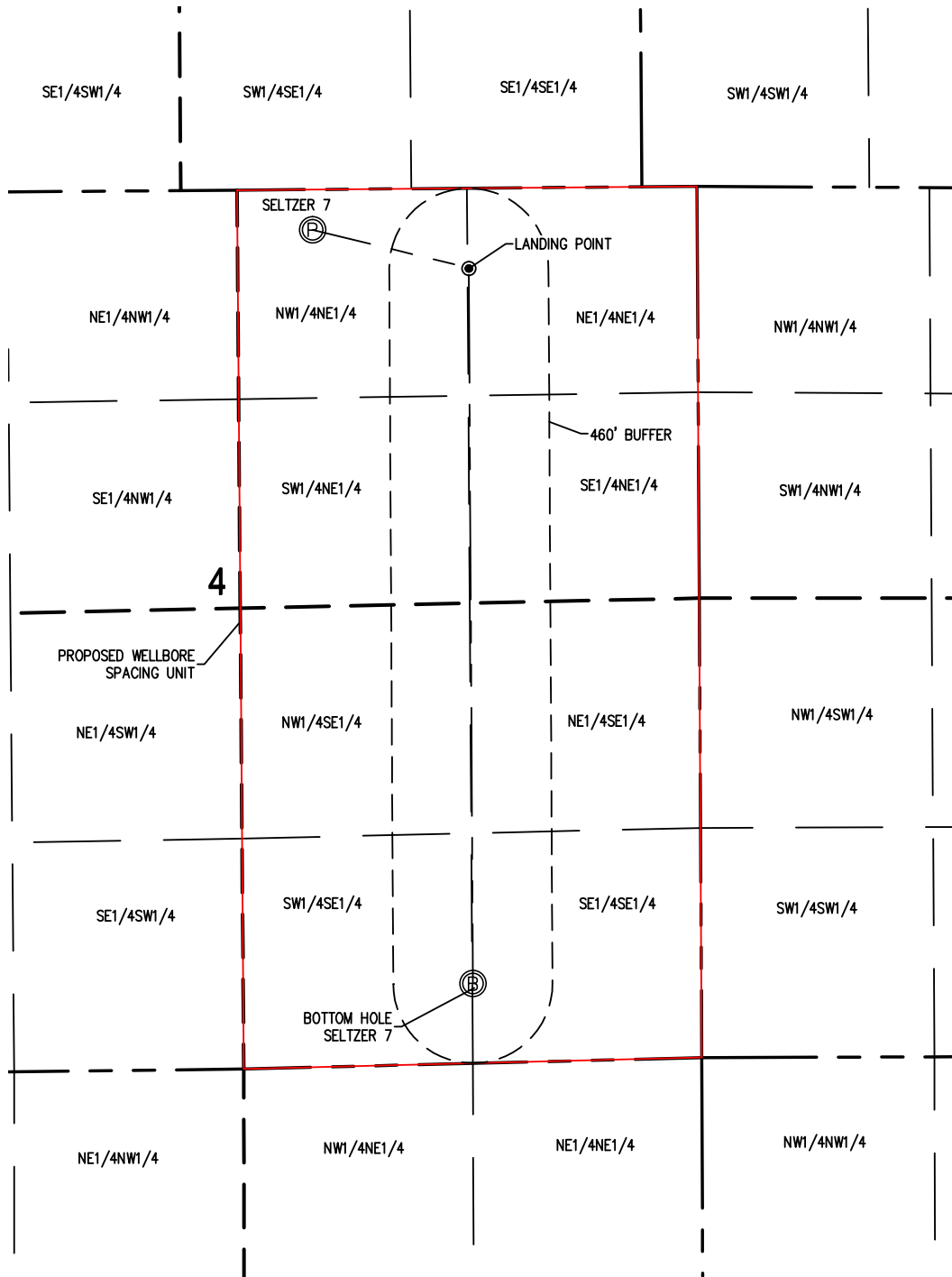
- 1) THIS SKETCH DOES NOT REPRESENT A BOUNDARY SURVEY.
- 2) THE DATUM FOR THE LATITUDES AND LONGITUDES ON THIS SKETCH IS NAD83.



WELL BORE SPACING UNIT

SELTZER 7

SECTION 4
TOWNSHIP 1 SOUTH
RANGE 67 WEST



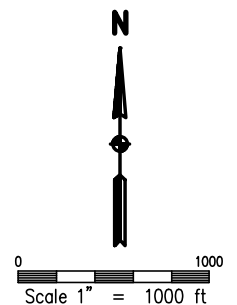
SURFACE HOLE:
LATITUDE: 39.999719° N
LONGITUDE: 104.892318° W

LANDING POINT:
LATITUDE: 39.999098° N
LONGITUDE: 104.889102° W

BOTTOM HOLE:
LATITUDE: 39.987756° N
LONGITUDE: 104.889120° W

NOTES:

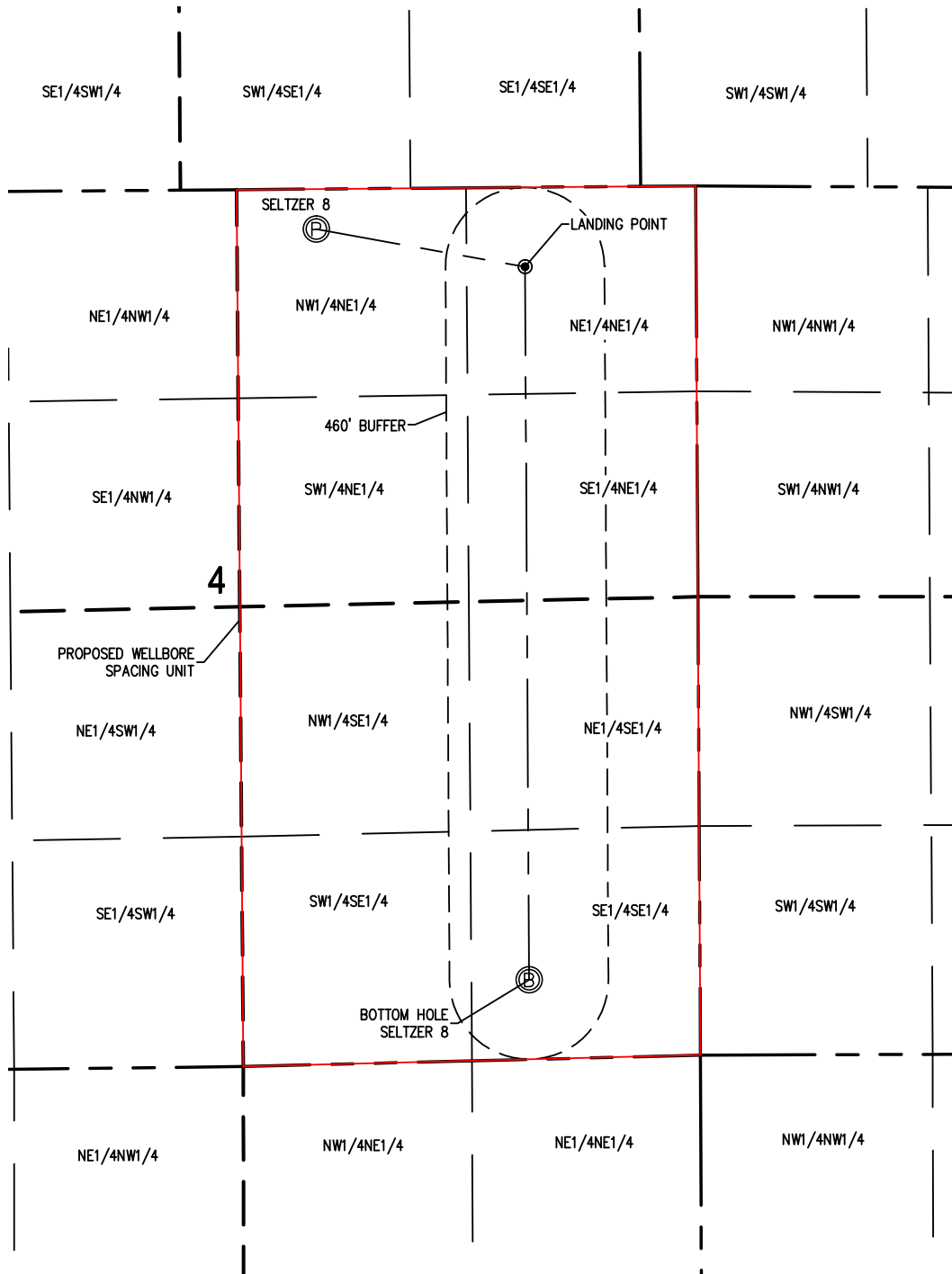
- 1) THIS SKETCH DOES NOT REPRESENT A BOUNDARY SURVEY.
- 2) THE DATUM FOR THE LATITUDES AND LONGITUDES ON THIS SKETCH IS NAD83.



WELL BORE SPACING UNIT

SELTZER 8

SECTION 4
TOWNSHIP 1 SOUTH
RANGE 67 WEST



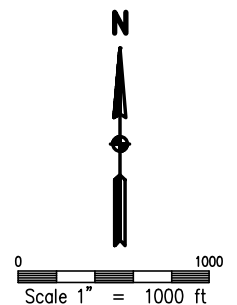
SURFACE HOLE:
LATITUDE: 39.999719° N
LONGITUDE: 104.892229° W

BOTTOM HOLE:
LATITUDE: 39.987772° N
LONGITUDE: 104.887943° W

LANDING POINT:
LATITUDE: 39.999099° N
LONGITUDE: 104.887924° W

NOTES:

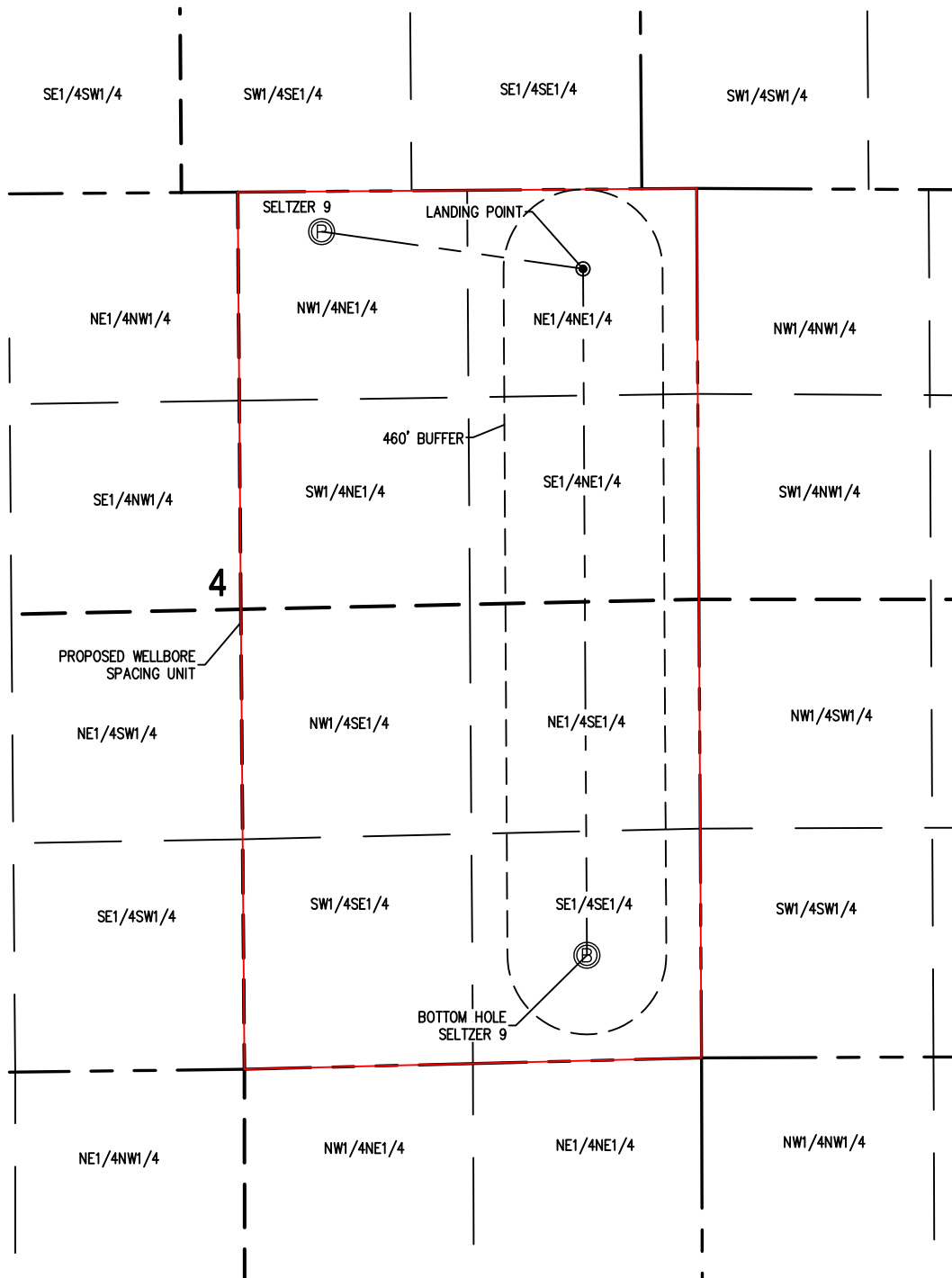
- 1) THIS SKETCH DOES NOT REPRESENT A BOUNDARY SURVEY.
- 2) THE DATUM FOR THE LATITUDES AND LONGITUDES ON THIS SKETCH IS NAD83.



WELL BORE SPACING UNIT

SELTZER 9

SECTION 4
TOWNSHIP 1 SOUTH
RANGE 67 WEST

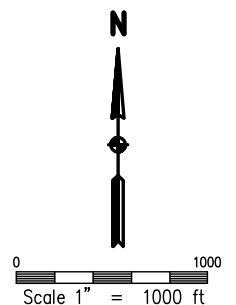


SURFACE HOLE:
LATITUDE: 39.999719° N
LONGITUDE: 104.892139° W
BOTTOM HOLE:
LATITUDE: 39.988200° N
LONGITUDE: 104.886765° W

LANDING POINT:
LATITUDE: 39.999101° N
LONGITUDE: 104.886747° W

NOTES:

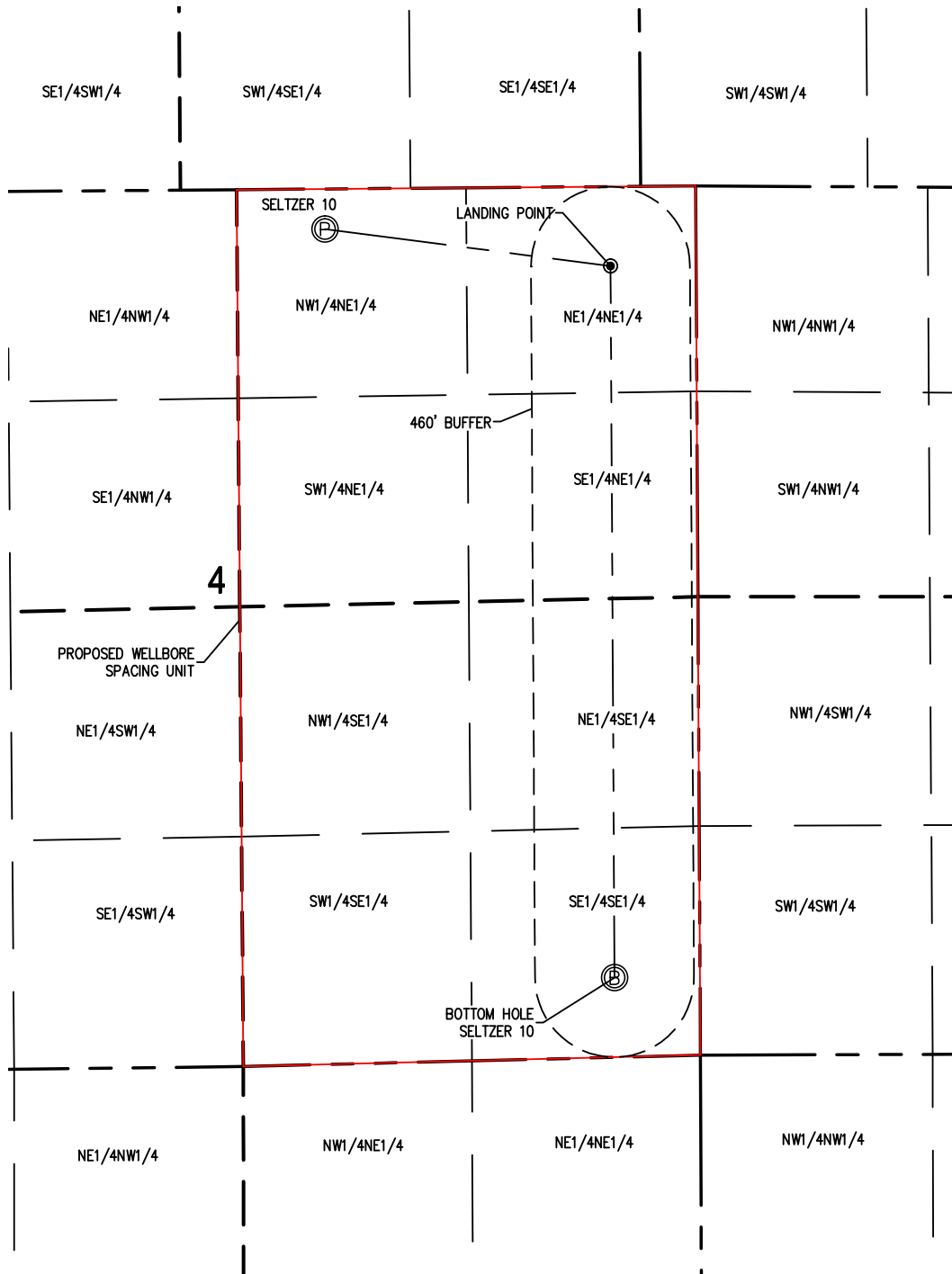
- 1) THIS SKETCH DOES NOT REPRESENT A BOUNDARY SURVEY.
- 2) THE DATUM FOR THE LATITUDES AND LONGITUDES ON THIS SKETCH IS NAD83.



WELL BORE SPACING UNIT

SELTZER 10

SECTION 4
TOWNSHIP 1 SOUTH
RANGE 67 WEST



SURFACE HOLE:
LATITUDE: 39.999719° N
LONGITUDE: 104.892050° W

LANDING POINT:
LATITUDE: 39.999101° N
LONGITUDE: 104.886158° W

BOTTOM HOLE:
LATITUDE: 39.987796° N
LONGITUDE: 104.886177° W

NOTES:

- 1) THIS SKETCH DOES NOT REPRESENT A BOUNDARY SURVEY.
- 2) THE DATUM FOR THE LATITUDES AND LONGITUDES ON THIS SKETCH IS NAD83.

