

EXTRACTION OIL & GAS

WELD COUNTY, COLORADO (NAD 83)

NW NE SEC. 4 T1S R67W 6th P.M.

SELTZER 6

ORIGINAL WELLBORE

13 October, 2015

Plan: PROPOSAL #1

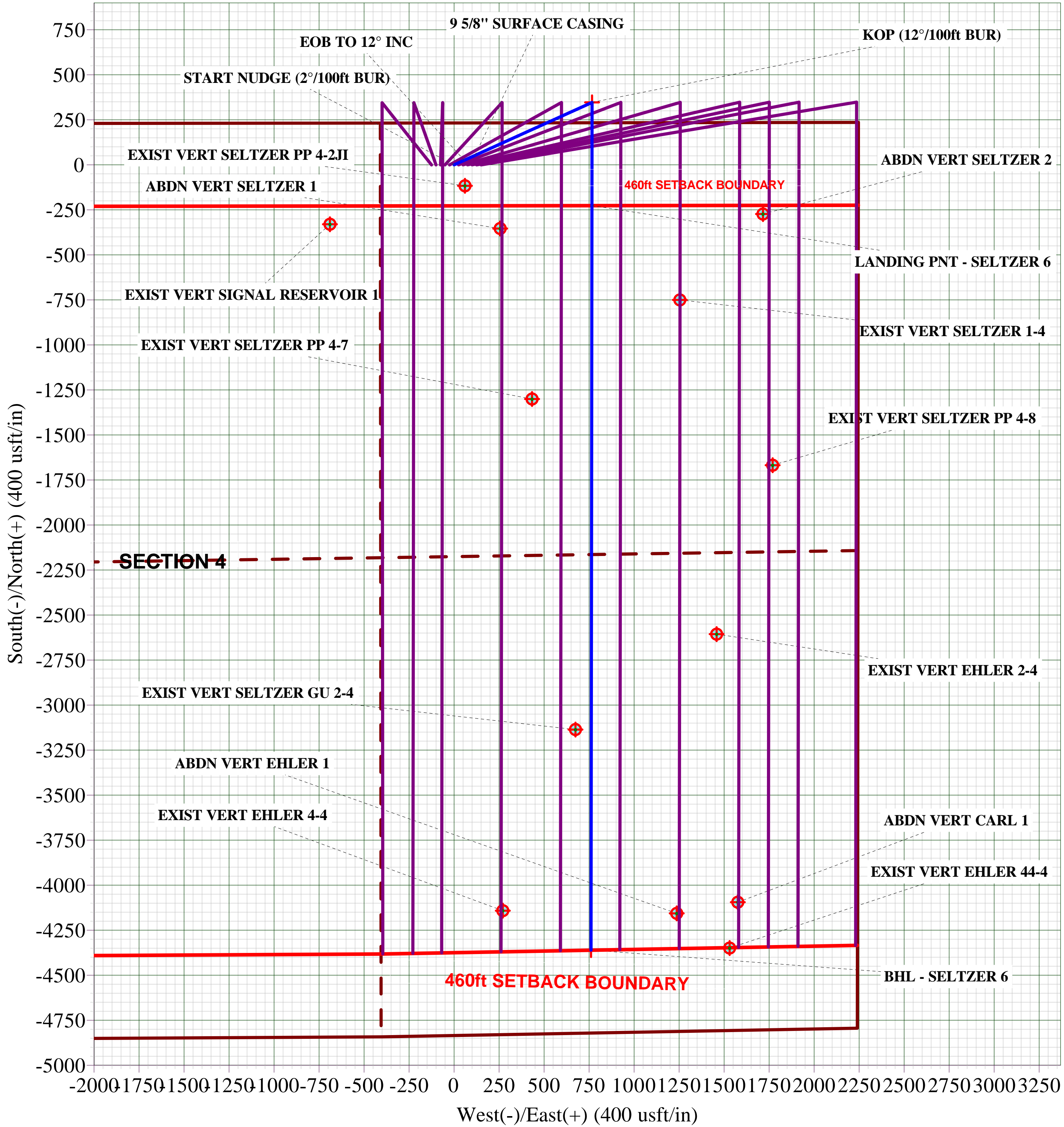
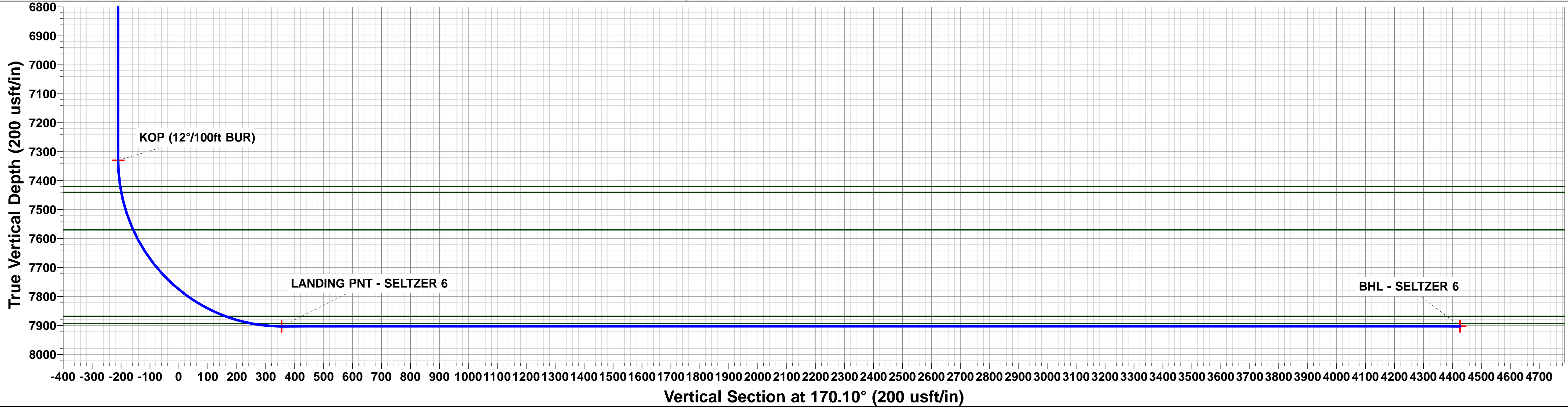
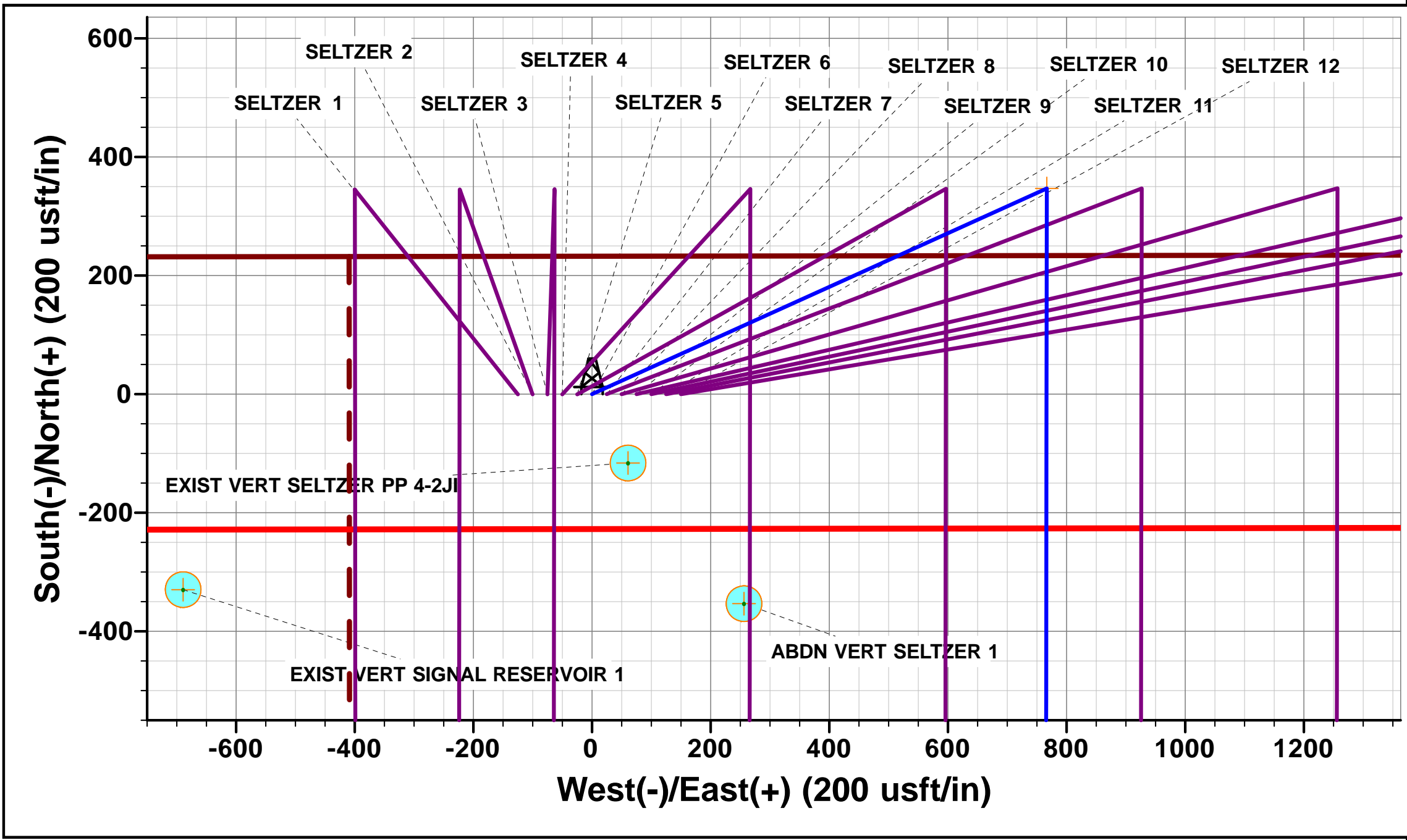
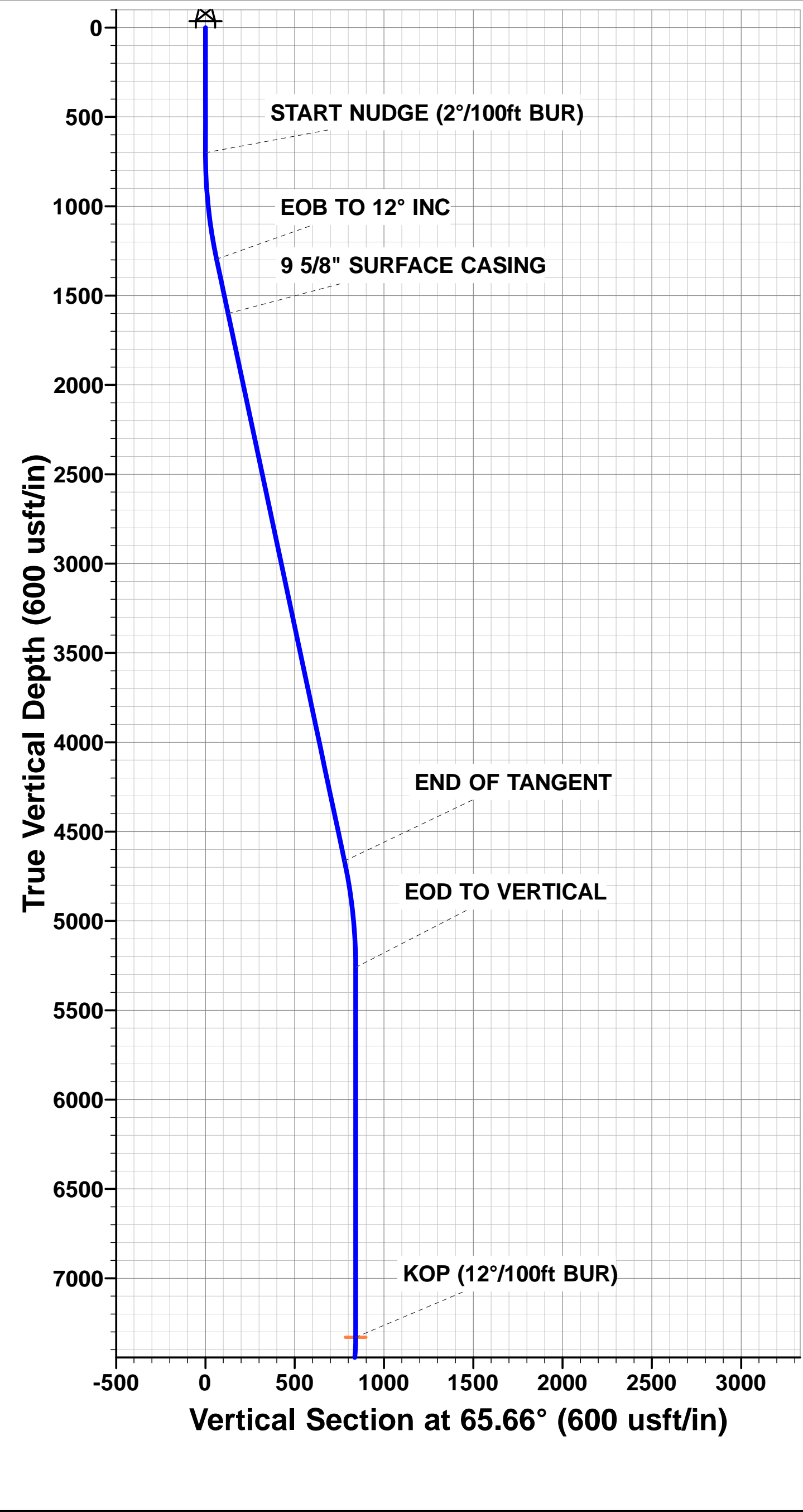




Project: WELD COUNTY, COLORADO (NAD 83)
Site: NW NE SEC. 4 T1S R67W 6th P.M.
Well: SELTZER 6
Wellbore: ORIGINAL WELLBORE
Design: PROPOSAL #1

ANNOTATIONS									PROPOSED LOCAL COORDINATES: SHL: 233ft FNL & 2247ft FEL Sec 4 LANDING PNT: 460ft FNL & 1480ft FEL Sec 4 BHL: 460ft FSL & 1480ft FEL Sec 4
TVD	MD	Inc	Azi	+N/-S	+E/-W	VSect	Dep	Annotation	
700.0	700.0	0.00	0.00	0.0	0.0	0.0	0.0	START NUDGE (2°/100ft BUR)	
1295.8	1300.2	12.00	65.66	25.8	57.1	-15.6	62.6	EOB TO 12° INC	
1600.0	1611.2	12.00	65.66	52.5	116.0	-31.8	127.3	9 5/8" SURFACE CASING	
4664.2	4743.8	12.00	65.66	321.1	709.6	-194.3	778.9	END OF TANGENT	
5260.0	5344.1	0.00	0.00	346.9	766.7	-209.9	841.5	EOD TO VERTICAL	
7330.0	7414.1	0.00	0.00	346.9	766.7	-209.9	841.5	KOP (12°/100ft BUR)	
7903.0	8314.2	90.00	180.07	-226.1	766.0	354.5	1414.6	LANDING PNT - SELTZER 6	
7903.0	12448.8	90.00	180.06	-4360.8	761.1	4426.7	5549.2	BHL - SELTZER 6	

WELLBORE TARGET DETAILS (LAT/LONG)					
Name	TVD	+N/-S	+E/-W	Latitude	Longitude
KOP - SELTZER 6	7330.0	346.9	766.7	40.000671	-104.889670
LANDING PNT - SELTZER 6	7903.0	-226.1	766.0	39.999098	-104.889673
BHL - SELTZER 6	7903.0	-4360.8	761.1	39.987748	-104.889691



Planning Report



Database:	EDM 5000.1 Single User Db	Local Co-ordinate Reference:	Well SELTZER 6
Company:	EXTRACTION OIL & GAS	TVD Reference:	KB-EST @ 5098.0usft (Original Well Elev)
Project:	WELD COUNTY, COLORADO (NAD 83)	MD Reference:	KB-EST @ 5098.0usft (Original Well Elev)
Site:	NW NE SEC. 4 T1S R67W 6th P.M.	North Reference:	True
Well:	SELTZER 6	Survey Calculation Method:	Minimum Curvature
Wellbore:	ORIGINAL WELLBORE		
Design:	PROPOSAL #1		

Project	WELD COUNTY, COLORADO (NAD 83)		
Map System:	US State Plane 1983	System Datum:	Mean Sea Level
Geo Datum:	North American Datum 1983		
Map Zone:	Colorado Northern Zone		Using geodetic scale factor

Site	NW NE SEC. 4 T1S R67W 6th P.M.		
Site Position:		Northing:	1,243,328.66 usft
From:	Lat/Long	Easting:	3,170,368.61 usft
Position Uncertainty:	0.0 usft	Slot Radius:	1.10000ft
		Latitude:	39.999719
		Longitude:	-104.891872
		Grid Convergence:	0.39 °

Well	SELTZER 6		
Well Position	+N/-S	-0.1 usft	Northing:
	+E/-W	-149.9 usft	Easting:
Position Uncertainty	0.0 usft	Wellhead Elevation:	usft
		Latitude:	39.999719
		Longitude:	-104.892407
		Ground Level:	5,082.0 usft

Wellbore	ORIGINAL WELLBORE				
Magnetics	Model Name	Sample Date	Declination (°)	Dip Angle (°)	Field Strength (nT)
	IGRF2015	13/10/2015	8.42	66.55	52,358

Design	PROPOSAL #1			
Audit Notes:				
Version:	Phase:	PROTOTYPE	Tie On Depth:	0.0
Vertical Section:	Depth From (TVD) (usft)	+N/-S (usft)	+E/-W (usft)	Direction (°)
	7,903.0	0.0	0.0	170.10

Plan Sections											
MD (usft)	Inc (°)	Azi (°)	Vertical Depth	SS (usft)	+N/-S (usft)	+E/-W (usft)	Dogleg Rate (°/100usft)	Build Rate (°/100usft)	Turn Rate (°/100usft)	TFO (°)	Target
0.0	0.00	0.00	0.0	-5,098.0	0.0	0.0	0.00	0.00	0.00	0.00	
700.0	0.00	0.00	700.0	-4,398.0	0.0	0.0	0.00	0.00	0.00	0.00	
1,300.2	12.00	65.66	1,295.8	-3,802.2	25.8	57.1	2.00	2.00	0.00	65.66	
4,743.8	12.00	65.66	4,664.2	-433.8	321.1	709.6	0.00	0.00	0.00	0.00	
5,344.1	0.00	0.00	5,260.0	162.0	346.9	766.7	2.00	-2.00	0.00	180.00	
7,414.1	0.00	0.00	7,330.0	2,232.0	346.9	766.7	0.00	0.00	0.00	0.00	KOP - SELTZER 6
8,314.2	90.00	180.07	7,903.0	2,805.0	-226.1	766.0	10.00	10.00	-19.99	180.07	LANDING PNT - SE
12,448.8	90.00	180.06	7,903.0	2,805.0	-4,360.8	761.1	0.00	0.00	0.00	-128.71	BHL - SELTZER 6

Database:	EDM 5000.1 Single User Db	Local Co-ordinate Reference:	Well SELTZER 6
Company:	EXTRACTION OIL & GAS	TVD Reference:	KB-EST @ 5098.0usft (Original Well Elev)
Project:	WELD COUNTY, COLORADO (NAD 83)	MD Reference:	KB-EST @ 5098.0usft (Original Well Elev)
Site:	NW NE SEC. 4 T1S R67W 6th P.M.	North Reference:	True
Well:	SELTZER 6	Survey Calculation Method:	Minimum Curvature
Wellbore:	ORIGINAL WELLBORE		
Design:	PROPOSAL #1		

Planned Survey

MD (usft)	Inc (°)	Azi (°)	TVD (usft)	SS (usft)	+N/-S (usft)	+E/-W (usft)	Vertical Section (usft)	Dogleg Rate (°/100usft)	Build Rate (°/100usft)	Turn Rate (°/100usft)
0.0	0.00	0.00	0.0	5,098.00	0.0	0.0	0.0	0.00	0.00	0.00
100.0	0.00	0.00	100.0	4,998.00	0.0	0.0	0.0	0.00	0.00	0.00
200.0	0.00	0.00	200.0	4,898.00	0.0	0.0	0.0	0.00	0.00	0.00
300.0	0.00	0.00	300.0	4,798.00	0.0	0.0	0.0	0.00	0.00	0.00
400.0	0.00	0.00	400.0	4,698.00	0.0	0.0	0.0	0.00	0.00	0.00
500.0	0.00	0.00	500.0	4,598.00	0.0	0.0	0.0	0.00	0.00	0.00
600.0	0.00	0.00	600.0	4,498.00	0.0	0.0	0.0	0.00	0.00	0.00
START NUDGE (2°/100ft BUR)										
700.0	0.00	0.00	700.0	4,398.00	0.0	0.0	0.0	0.00	0.00	0.00
800.0	2.00	65.66	800.0	4,298.02	0.7	1.6	-0.4	2.00	2.00	0.00
900.0	4.00	65.66	899.8	4,198.16	2.9	6.4	-1.7	2.00	2.00	0.00
1,000.0	6.00	65.66	999.5	4,098.55	6.5	14.3	-3.9	2.00	2.00	0.00
1,100.0	8.00	65.66	1,098.7	3,999.30	11.5	25.4	-7.0	2.00	2.00	0.00
1,200.0	10.00	65.66	1,197.5	3,900.53	17.9	39.7	-10.9	2.00	2.00	0.00
1,300.0	12.00	65.66	1,295.6	3,802.38	25.8	57.0	-15.6	2.00	2.00	0.00
EOB TO 12° INC										
1,300.2	12.00	65.66	1,295.8	3,802.16	25.8	57.1	-15.6	2.00	2.00	0.00
1,400.0	12.00	65.66	1,393.4	3,704.56	34.4	76.0	-20.8	0.00	0.00	0.00
1,500.0	12.00	65.66	1,491.2	3,606.75	43.0	94.9	-26.0	0.00	0.00	0.00
1,600.0	12.00	65.66	1,589.1	3,508.94	51.5	113.9	-31.2	0.00	0.00	0.00
9 5/8" SURFACE CASING										
1,611.2	12.00	65.66	1,600.0	3,498.00	52.5	116.0	-31.8	0.00	0.00	0.00
1,700.0	12.00	65.66	1,686.9	3,411.12	60.1	132.8	-36.4	0.00	0.00	0.00
1,800.0	12.00	65.66	1,784.7	3,313.31	68.7	151.8	-41.6	0.00	0.00	0.00
1,900.0	12.00	65.66	1,882.5	3,215.50	77.2	170.7	-46.7	0.00	0.00	0.00
2,000.0	12.00	65.66	1,980.3	3,117.68	85.8	189.7	-51.9	0.00	0.00	0.00
2,100.0	12.00	65.66	2,078.1	3,019.87	94.4	208.6	-57.1	0.00	0.00	0.00
2,200.0	12.00	65.66	2,175.9	2,922.06	103.0	227.6	-62.3	0.00	0.00	0.00
2,300.0	12.00	65.66	2,273.8	2,824.25	111.5	246.5	-67.5	0.00	0.00	0.00
2,400.0	12.00	65.66	2,371.6	2,726.43	120.1	265.5	-72.7	0.00	0.00	0.00
2,500.0	12.00	65.66	2,469.4	2,628.62	128.7	284.4	-77.9	0.00	0.00	0.00
2,600.0	12.00	65.66	2,567.2	2,530.81	137.3	303.4	-83.1	0.00	0.00	0.00
2,700.0	12.00	65.66	2,665.0	2,432.99	145.8	322.3	-88.3	0.00	0.00	0.00
2,800.0	12.00	65.66	2,762.8	2,335.18	154.4	341.3	-93.4	0.00	0.00	0.00
2,900.0	12.00	65.66	2,860.6	2,237.37	163.0	360.2	-98.6	0.00	0.00	0.00
3,000.0	12.00	65.66	2,958.4	2,139.55	171.6	379.2	-103.8	0.00	0.00	0.00
3,100.0	12.00	65.66	3,056.3	2,041.74	180.1	398.1	-109.0	0.00	0.00	0.00
3,200.0	12.00	65.66	3,154.1	1,943.93	188.7	417.1	-114.2	0.00	0.00	0.00
3,300.0	12.00	65.66	3,251.9	1,846.11	197.3	436.0	-119.4	0.00	0.00	0.00
3,400.0	12.00	65.66	3,349.7	1,748.30	205.9	455.0	-124.6	0.00	0.00	0.00
3,500.0	12.00	65.66	3,447.5	1,650.49	214.4	473.9	-129.8	0.00	0.00	0.00
3,600.0	12.00	65.66	3,545.3	1,552.67	223.0	492.9	-134.9	0.00	0.00	0.00
3,700.0	12.00	65.66	3,643.1	1,454.86	231.6	511.8	-140.1	0.00	0.00	0.00
3,800.0	12.00	65.66	3,741.0	1,357.05	240.2	530.8	-145.3	0.00	0.00	0.00
3,900.0	12.00	65.66	3,838.8	1,259.23	248.7	549.7	-150.5	0.00	0.00	0.00
4,000.0	12.00	65.66	3,936.6	1,161.42	257.3	568.7	-155.7	0.00	0.00	0.00
4,100.0	12.00	65.66	4,034.4	1,063.61	265.9	587.6	-160.9	0.00	0.00	0.00
PARKMAN										
4,197.7	12.00	65.66	4,130.0	968.00	274.3	606.1	-166.0	0.00	0.00	0.00
4,200.0	12.00	65.66	4,132.2	965.80	274.4	606.6	-166.1	0.00	0.00	0.00
4,300.0	12.00	65.66	4,230.0	867.98	283.0	625.5	-171.3	0.00	0.00	0.00
4,400.0	12.00	65.66	4,327.8	770.17	291.6	644.5	-176.5	0.00	0.00	0.00
4,500.0	12.00	65.66	4,425.6	672.36	300.2	663.4	-181.6	0.00	0.00	0.00
4,600.0	12.00	65.66	4,523.5	574.54	308.7	682.4	-186.8	0.00	0.00	0.00

Database:	EDM 5000.1 Single User Db	Local Co-ordinate Reference:	Well SELTZER 6
Company:	EXTRACTION OIL & GAS	TVD Reference:	KB-EST @ 5098.0usft (Original Well Elev)
Project:	WELD COUNTY, COLORADO (NAD 83)	MD Reference:	KB-EST @ 5098.0usft (Original Well Elev)
Site:	NW NE SEC. 4 T1S R67W 6th P.M.	North Reference:	True
Well:	SELTZER 6	Survey Calculation Method:	Minimum Curvature
Wellbore:	ORIGINAL WELLBORE		
Design:	PROPOSAL #1		

Planned Survey

MD (usft)	Inc (°)	Azi (°)	TVD (usft)	SS (usft)	+N/-S (usft)	+E/-W (usft)	Vertical Section (usft)	Dogleg Rate (°/100usft)	Build Rate (°/100usft)	Turn Rate (°/100usft)
4,700.0	12.00	65.66	4,621.3	476.73	317.3	701.3	-192.0	0.00	0.00	0.00
END OF TANGENT										
4,743.8	12.00	65.66	4,664.2	433.84	321.1	709.6	-194.3	0.00	0.00	0.00
4,800.0	10.88	65.66	4,719.2	378.81	325.7	719.8	-197.1	2.00	-2.00	0.00
4,900.0	8.88	65.66	4,817.7	280.29	332.7	735.4	-201.4	2.00	-2.00	0.00
5,000.0	6.88	65.66	4,916.8	181.24	338.4	747.9	-204.8	2.00	-2.00	0.00
SUSSEX										
5,053.6	5.81	65.66	4,970.0	128.00	340.8	753.3	-206.2	2.00	-2.00	0.00
5,100.0	4.88	65.66	5,016.2	81.78	342.6	757.2	-207.3	2.00	-2.00	0.00
5,200.0	2.88	65.66	5,116.0	-17.99	345.4	763.4	-209.0	2.00	-2.00	0.00
5,300.0	0.88	65.66	5,215.9	-117.93	346.8	766.4	-209.8	2.00	-2.00	0.00
EOD TO VERTICAL										
5,344.1	0.00	0.00	5,260.0	-162.00	346.9	766.7	-209.9	2.00	-2.00	0.00
5,400.0	0.00	0.00	5,315.9	-217.93	346.9	766.7	-209.9	0.00	0.00	0.00
5,500.0	0.00	0.00	5,415.9	-317.93	346.9	766.7	-209.9	0.00	0.00	0.00
5,600.0	0.00	0.00	5,515.9	-417.93	346.9	766.7	-209.9	0.00	0.00	0.00
5,700.0	0.00	0.00	5,615.9	-517.93	346.9	766.7	-209.9	0.00	0.00	0.00
5,800.0	0.00	0.00	5,715.9	-617.93	346.9	766.7	-209.9	0.00	0.00	0.00
5,900.0	0.00	0.00	5,815.9	-717.93	346.9	766.7	-209.9	0.00	0.00	0.00
6,000.0	0.00	0.00	5,915.9	-817.93	346.9	766.7	-209.9	0.00	0.00	0.00
6,100.0	0.00	0.00	6,015.9	-917.93	346.9	766.7	-209.9	0.00	0.00	0.00
6,200.0	0.00	0.00	6,115.9	-1,017.93	346.9	766.7	-209.9	0.00	0.00	0.00
6,300.0	0.00	0.00	6,215.9	-1,117.93	346.9	766.7	-209.9	0.00	0.00	0.00
SHANNON										
6,364.1	0.00	0.00	6,280.0	-1,182.00	346.9	766.7	-209.9	0.00	0.00	0.00
6,400.0	0.00	0.00	6,315.9	-1,217.93	346.9	766.7	-209.9	0.00	0.00	0.00
6,500.0	0.00	0.00	6,415.9	-1,317.93	346.9	766.7	-209.9	0.00	0.00	0.00
6,600.0	0.00	0.00	6,515.9	-1,417.93	346.9	766.7	-209.9	0.00	0.00	0.00
6,700.0	0.00	0.00	6,615.9	-1,517.93	346.9	766.7	-209.9	0.00	0.00	0.00
6,800.0	0.00	0.00	6,715.9	-1,617.93	346.9	766.7	-209.9	0.00	0.00	0.00
6,900.0	0.00	0.00	6,815.9	-1,717.93	346.9	766.7	-209.9	0.00	0.00	0.00
7,000.0	0.00	0.00	6,915.9	-1,817.93	346.9	766.7	-209.9	0.00	0.00	0.00
7,100.0	0.00	0.00	7,015.9	-1,917.93	346.9	766.7	-209.9	0.00	0.00	0.00
7,200.0	0.00	0.00	7,115.9	-2,017.93	346.9	766.7	-209.9	0.00	0.00	0.00
7,300.0	0.00	0.00	7,215.9	-2,117.93	346.9	766.7	-209.9	0.00	0.00	0.00
7,400.0	0.00	0.00	7,315.9	-2,217.93	346.9	766.7	-209.9	0.00	0.00	0.00
KOP (12°/100ft BUR)										
7,414.1	0.00	0.00	7,330.0	-2,232.00	346.9	766.7	-209.9	0.00	0.00	0.00
7,500.0	8.59	180.07	7,415.6	-2,317.61	340.5	766.7	-203.6	10.00	10.00	0.00
SHARON SPRINGS										
7,504.4	9.04	180.07	7,420.0	-2,322.00	339.8	766.7	-202.9	10.00	10.00	0.00
NIOBRARA										
7,524.8	11.07	180.07	7,440.0	-2,342.00	336.2	766.7	-199.4	10.00	10.00	0.00
7,600.0	18.59	180.07	7,512.7	-2,414.68	317.0	766.7	-180.5	10.00	10.00	0.00
NIO B										
7,661.7	24.76	180.07	7,570.0	-2,472.00	294.2	766.6	-158.0	10.00	10.00	0.00
7,700.0	28.59	180.07	7,604.2	-2,506.21	277.0	766.6	-141.1	10.00	10.00	0.00
7,800.0	38.59	180.07	7,687.4	-2,589.41	221.8	766.5	-86.7	10.00	10.00	0.00
7,900.0	48.59	180.07	7,759.7	-2,661.74	152.9	766.5	-18.9	10.00	10.00	0.00
8,000.0	58.59	180.07	7,819.0	-2,721.03	72.5	766.4	60.3	10.00	10.00	0.00
8,100.0	68.59	180.07	7,863.5	-2,765.45	-16.9	766.2	148.4	10.00	10.00	0.00
FORT HAYES										
8,112.8	69.87	180.07	7,868.0	-2,770.00	-28.9	766.2	160.2	10.00	10.00	0.00

Database:	EDM 5000.1 Single User Db	Local Co-ordinate Reference:	Well SELTZER 6
Company:	EXTRACTION OIL & GAS	TVD Reference:	KB-EST @ 5098.0usft (Original Well Elev)
Project:	WELD COUNTY, COLORADO (NAD 83)	MD Reference:	KB-EST @ 5098.0usft (Original Well Elev)
Site:	NW NE SEC. 4 T1S R67W 6th P.M.	North Reference:	True
Well:	SELTZER 6	Survey Calculation Method:	Minimum Curvature
Wellbore:	ORIGINAL WELLBORE		
Design:	PROPOSAL #1		

Planned Survey

MD (usft)	Inc (°)	Azi (°)	TVD (usft)	SS (usft)	+N/-S (usft)	+E/-W (usft)	Vertical Section (usft)	Dogleg Rate (°/100usft)	Build Rate (°/100usft)	Turn Rate (°/100usft)
8,200.0	78.59	180.07	7,891.7	-2,793.67	-112.7	766.1	242.8	10.00	10.00	0.00
CODELL										
8,206.9	79.28	180.07	7,893.0	-2,795.00	-119.5	766.1	249.5	10.00	10.00	0.00
8,300.0	88.59	180.07	7,902.8	-2,804.83	-212.0	766.0	340.5	10.00	10.00	0.00
LANDING PNT - SELTZER 6										
8,314.2	90.00	180.07	7,903.0	-2,805.00	-226.1	766.0	354.5	10.00	10.00	0.00
8,400.0	90.00	180.07	7,903.0	-2,804.99	-312.0	765.9	439.0	0.00	0.00	0.00
8,500.0	90.00	180.07	7,903.0	-2,804.99	-412.0	765.7	537.5	0.00	0.00	0.00
8,600.0	90.00	180.07	7,903.0	-2,804.98	-512.0	765.6	636.0	0.00	0.00	0.00
8,700.0	90.00	180.07	7,903.0	-2,804.98	-612.0	765.5	734.5	0.00	0.00	0.00
8,800.0	90.00	180.07	7,903.0	-2,804.97	-712.0	765.4	832.9	0.00	0.00	0.00
8,900.0	90.00	180.07	7,903.0	-2,804.97	-812.0	765.2	931.4	0.00	0.00	0.00
9,000.0	90.00	180.07	7,903.0	-2,804.97	-912.0	765.1	1,029.9	0.00	0.00	0.00
9,100.0	90.00	180.07	7,903.0	-2,804.96	-1,012.0	765.0	1,128.4	0.00	0.00	0.00
9,200.0	90.00	180.07	7,903.0	-2,804.96	-1,112.0	764.9	1,226.9	0.00	0.00	0.00
9,300.0	90.00	180.07	7,903.0	-2,804.96	-1,212.0	764.7	1,325.4	0.00	0.00	0.00
9,400.0	90.00	180.07	7,903.0	-2,804.95	-1,312.0	764.6	1,423.9	0.00	0.00	0.00
9,500.0	90.00	180.07	7,902.9	-2,804.95	-1,412.0	764.5	1,522.4	0.00	0.00	0.00
9,600.0	90.00	180.07	7,902.9	-2,804.95	-1,512.0	764.4	1,620.9	0.00	0.00	0.00
9,700.0	90.00	180.07	7,902.9	-2,804.94	-1,612.0	764.3	1,719.4	0.00	0.00	0.00
9,800.0	90.00	180.07	7,902.9	-2,804.94	-1,712.0	764.1	1,817.8	0.00	0.00	0.00
9,900.0	90.00	180.07	7,902.9	-2,804.94	-1,812.0	764.0	1,916.3	0.00	0.00	0.00
10,000.0	90.00	180.07	7,902.9	-2,804.94	-1,912.0	763.9	2,014.8	0.00	0.00	0.00
10,100.0	90.00	180.07	7,902.9	-2,804.94	-2,012.0	763.8	2,113.3	0.00	0.00	0.00
10,200.0	90.00	180.07	7,902.9	-2,804.94	-2,112.0	763.7	2,211.8	0.00	0.00	0.00
10,300.0	90.00	180.07	7,902.9	-2,804.94	-2,212.0	763.5	2,310.3	0.00	0.00	0.00
10,400.0	90.00	180.07	7,902.9	-2,804.94	-2,312.0	763.4	2,408.8	0.00	0.00	0.00
10,500.0	90.00	180.07	7,902.9	-2,804.94	-2,412.0	763.3	2,507.3	0.00	0.00	0.00
10,600.0	90.00	180.07	7,902.9	-2,804.94	-2,512.0	763.2	2,605.8	0.00	0.00	0.00
10,700.0	90.00	180.07	7,902.9	-2,804.94	-2,612.0	763.1	2,704.3	0.00	0.00	0.00
10,800.0	90.00	180.07	7,902.9	-2,804.94	-2,712.0	762.9	2,802.7	0.00	0.00	0.00
10,900.0	90.00	180.07	7,902.9	-2,804.94	-2,812.0	762.8	2,901.2	0.00	0.00	0.00
11,000.0	90.00	180.07	7,902.9	-2,804.94	-2,912.0	762.7	2,999.7	0.00	0.00	0.00
11,100.0	90.00	180.07	7,902.9	-2,804.95	-3,012.0	762.6	3,098.2	0.00	0.00	0.00
11,200.0	90.00	180.07	7,902.9	-2,804.95	-3,112.0	762.5	3,196.7	0.00	0.00	0.00
11,300.0	90.00	180.07	7,903.0	-2,804.95	-3,212.0	762.4	3,295.2	0.00	0.00	0.00
11,400.0	90.00	180.07	7,903.0	-2,804.95	-3,312.0	762.2	3,393.7	0.00	0.00	0.00
11,500.0	90.00	180.07	7,903.0	-2,804.96	-3,412.0	762.1	3,492.2	0.00	0.00	0.00
11,600.0	90.00	180.07	7,903.0	-2,804.96	-3,512.0	762.0	3,590.7	0.00	0.00	0.00
11,700.0	90.00	180.07	7,903.0	-2,804.96	-3,612.0	761.9	3,689.2	0.00	0.00	0.00
11,800.0	90.00	180.07	7,903.0	-2,804.97	-3,712.0	761.8	3,787.7	0.00	0.00	0.00
11,900.0	90.00	180.06	7,903.0	-2,804.97	-3,812.0	761.7	3,886.2	0.00	0.00	0.00
12,000.0	90.00	180.06	7,903.0	-2,804.98	-3,912.0	761.6	3,984.6	0.00	0.00	0.00
12,100.0	90.00	180.06	7,903.0	-2,804.98	-4,012.0	761.5	4,083.1	0.00	0.00	0.00
12,200.0	90.00	180.06	7,903.0	-2,804.99	-4,112.0	761.3	4,181.6	0.00	0.00	0.00
12,300.0	90.00	180.06	7,903.0	-2,804.99	-4,212.0	761.2	4,280.1	0.00	0.00	0.00
12,400.0	90.00	180.06	7,903.0	-2,805.00	-4,312.0	761.1	4,378.6	0.00	0.00	0.00
BHL - SELTZER 6										
12,448.8	90.00	180.06	7,903.0	-2,805.00	-4,360.8	761.1	4,426.7	0.00	0.00	0.00

Database:	EDM 5000.1 Single User Db	Local Co-ordinate Reference:	Well SELTZER 6
Company:	EXTRACTION OIL & GAS	TVD Reference:	KB-EST @ 5098.0usft (Original Well Elev)
Project:	WELD COUNTY, COLORADO (NAD 83)	MD Reference:	KB-EST @ 5098.0usft (Original Well Elev)
Site:	NW NE SEC. 4 T1S R67W 6th P.M.	North Reference:	True
Well:	SELTZER 6	Survey Calculation Method:	Minimum Curvature
Wellbore:	ORIGINAL WELLBORE		
Design:	PROPOSAL #1		

Formations						
MD (usft)	TVD (usft)	Name	Lithology	Dip (°)	Dip Direction (°)	
4,197.7	4,130.0	PARKMAN				
5,053.6	4,970.0	SUSSEX				
6,364.1	6,280.0	SHANNON				
7,504.4	7,420.0	SHARON SPRINGS				
7,524.8	7,440.0	NIOBRARA				
7,661.7	7,570.0	NIO B				
8,112.8	7,868.0	FORT HAYES				
8,206.9	7,893.0	CODELL				

Plan Annotations				
MD (usft)	TVD (usft)	Local Coordinates		Comment
		+N/-S (usft)	+E/-W (usft)	
700.0	700.0	0.0	0.0	START NUDGE (2°/100ft BUR)
1,300.2	1,295.8	25.8	57.1	EOB TO 12° INC
1,611.2	1,600.0	52.5	116.0	9 5/8" SURFACE CASING
4,743.8	4,664.2	321.1	709.6	END OF TANGENT
5,344.1	5,260.0	346.9	766.7	EOD TO VERTICAL
7,414.1	7,330.0	346.9	766.7	KOP (12°/100ft BUR)
8,314.2	7,903.0	-226.1	766.0	LANDING PNT - SELTZER 6
12,448.8	7,903.0	-4,360.8	761.1	BHL - SELTZER 6