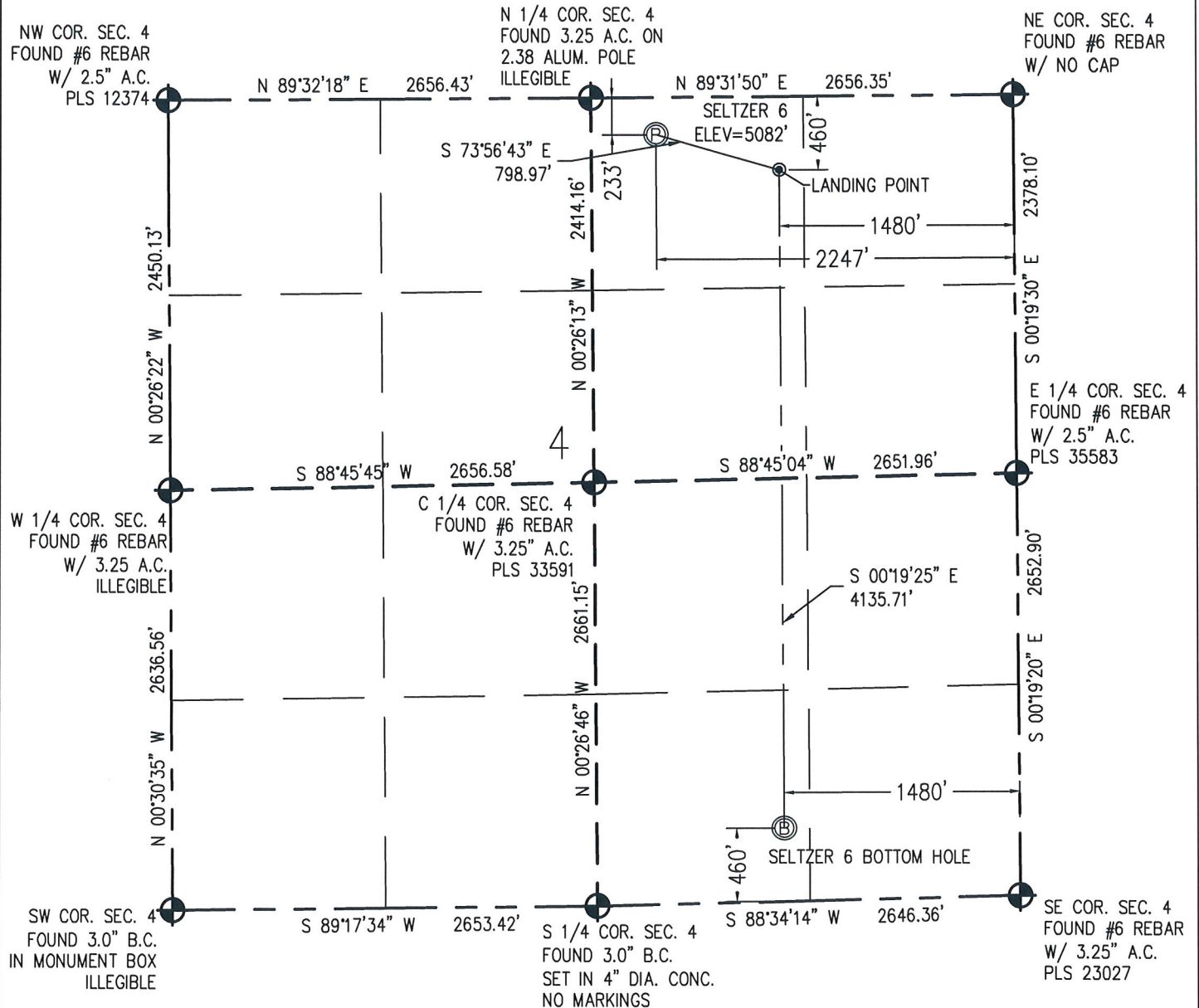


WELL LOCATION CERTIFICATE

THIS MAP DOES NOT REPRESENT A BOUNDARY SURVEY

SECTION 4
TOWNSHIP 1 SOUTH
RANGE 67 WEST

N IN ACCORDANCE WITH A REQUEST FROM JOSEPH SILIPO - EXTRACTION, BASELINE ENGINEERING CORP. HAS DETERMINED THE LOCATION OF THE SELTZER 6 TO BE 233' FNL AND 2247' FEL, AS MEASURED AT NINETY (90) DEGREES FROM THE SECTION LINE OF SECTION 4, TOWNSHIP 1 SOUTH, RANGE 67 WEST AND THE BOTTOM HOLE LOCATION TO BE 460' FSL AND 1480' FEL OF SECTION 4, TOWNSHIP 1 SOUTH, RANGE 67 WEST, 6TH PRINCIPAL MERIDIAN, ADAMS COUNTY, COLORADO.

I HEREBY CERTIFY THAT THIS WELL LOCATION CERTIFICATE WAS PREPARED BY ME, OR UNDER MY DIRECT SUPERVISION, THAT THE FIELD WORK WAS COMPLETED ON 8/18/2015, THAT IT IS NOT A LAND SURVEY PLAT OR AN IMPROVEMENT SURVEY PLAT, AND THAT IT IS NOT TO BE RELIED UPON FOR ESTABLISHMENT OF FENCE, BUILDING, OR OTHER FUTURE IMPROVEMENT LINES.

0 1000
Scale 1" = 1000 ft

NOTES:

- 1) NEAREST CULTURAL ITEMS:
BUILDING: 723' NW
BUILDING UNIT: 1079' NW
HIGH OCCUPANCY BUILDING UNIT: 5280'+
DESIGNATED OUTSIDE ACTIVITY AREA: 5280'+
PUBLIC ROAD: WELD COUNTY ROAD 2 221' N
ABOVE GROUND UTILITY: 205' N
RAILROAD: 5280'+
PROPERTY LINE: 233' N
- 2) SURFACE USE: NATURAL GRASS.
- 3) OPERATOR NAME: WYATT HALL.
- 4) THE NEAREST EXISTING WELL IS: SELTZER PP 4-2 JI 133' SE.
- 5) Bearings shown are grid bearings of the Colorado State Plane Coordinate System, North Zone, North American Datum 1983/2007. The lineal dimensions as contained herein are based upon the "U.S. Survey Foot."
- 6) Ground elevations are based on an observed GPS elevation (NAVD 88 DATUM).
- 7) IMPROVEMENTS: See LOCATION DRAWING for all visible improvements within 500' of disturbed area.

SURFACE HOLE:
LATITUDE: 39.999719° N
LONGITUDE: 104.892407° W
PDOP: 1.5
1/4, 1/4: NW1/4NE1/4

LANDING POINT:
LATITUDE: 39.999098° N
LONGITUDE: 104.889673° W

BOTTOM HOLE:
LATITUDE: 39.987748° N
LONGITUDE: 104.889691° W

LEGEND

- - FOUND/SET SURVEY MONUMENT PER MONUMENT RECORD EXCEPTIONS NOTED.
- - CALCULATED SURVEY MONUMENT POSITION
- (c) - CALCULATED DIMENSION



AARON A. DEMO
Professional Land Surveyor Registration No. 38285
State of Colorado
FOR AND ON BEHALF OF BASELINE ENGINEERING CORP.

Completed
10/2/2015

PROJECT #EXT01S67W04-01