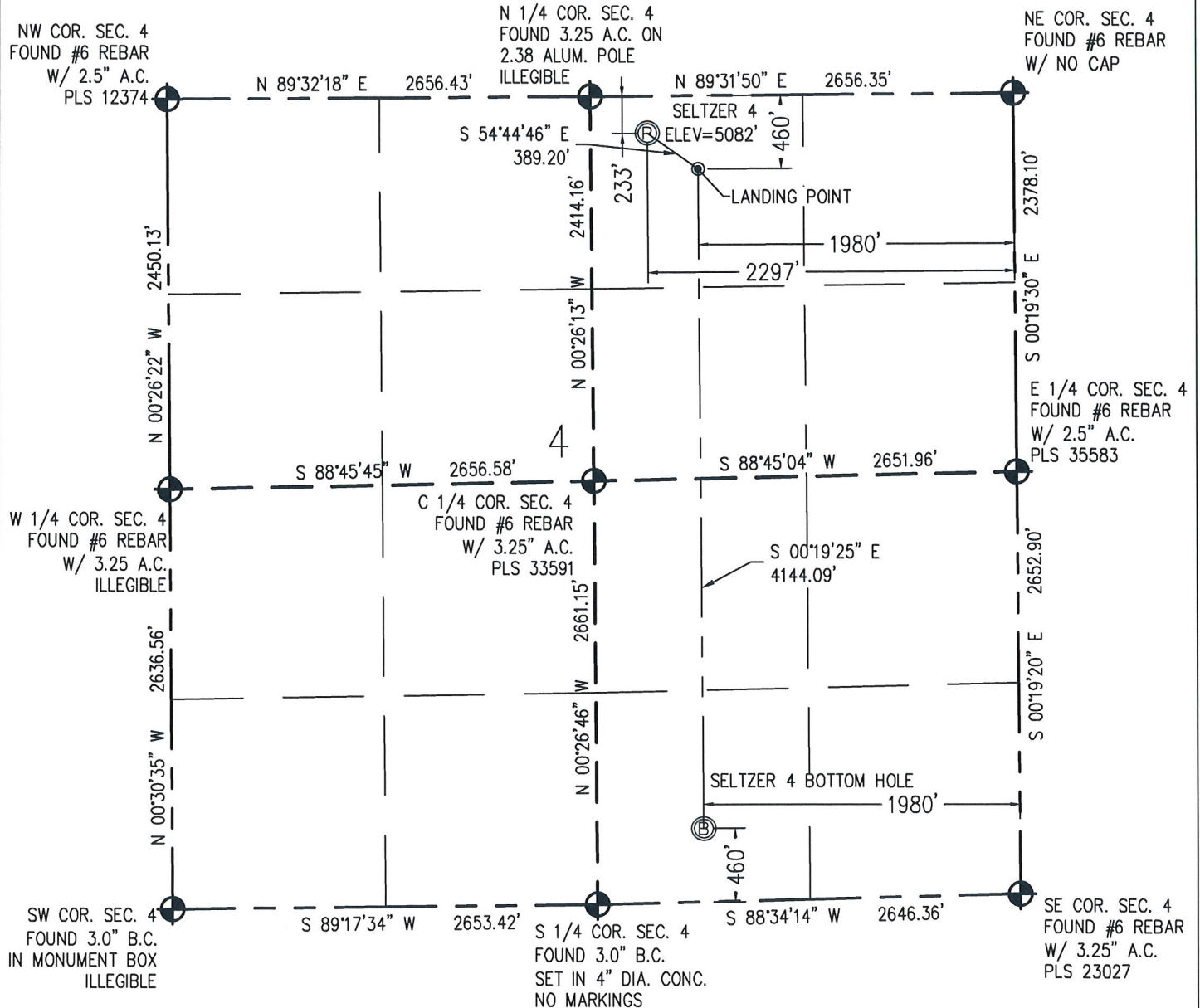


WELL LOCATION CERTIFICATE

THIS MAP DOES NOT REPRESENT A BOUNDARY SURVEY



0 1000
Scale 1" = 1000 ft

NOTES:

1) NEAREST CULTURAL ITEMS:

BUILDING: 674' NW

BUILDING UNIT: 1029' NW

HIGH OCCUPANCY BUILDING UNIT: 5280'+

DESIGNATED OUTSIDE ACTIVITY AREA: 5280'+

PUBLIC ROAD: WELD COUNTY ROAD 2 221' N

ABOVE GROUND UTILITY: 205' N

RAILROAD: 5280'+

PROPERTY LINE: 233' N

2) SURFACE USE: NATURAL GRASS.

3) OPERATOR NAME: WYATT HALL.

4) THE NEAREST EXISTING WELL IS: SELTZER PP 4-2 JI 163' SE.

5) Bearings shown are grid bearings of the Colorado State Plane Coordinate System, North Zone, North American Datum 1983/2007. The lineal dimensions as contained herein are based upon the "U.S. Survey Foot."

6) Ground elevations are based on an observed GPS elevation (NAVD 88 DATUM).

7) IMPROVEMENTS: See LOCATION DRAWING for all visible improvements within 500' of disturbed area.

IN ACCORDANCE WITH A REQUEST FROM JOSEPH SILIPO - EXTRACTION, BASELINE ENGINEERING CORP. HAS DETERMINED THE LOCATION OF THE SELTZER 4 TO BE 233' FNL AND 2297' FEL, AS MEASURED AT NINETY (90) DEGREES FROM THE SECTION LINE OF SECTION 4, TOWNSHIP 1 SOUTH, RANGE 67 WEST AND THE BOTTOM HOLE LOCATION TO BE 460' FSL AND 1980' FEL OF SECTION 4, TOWNSHIP 1 SOUTH, RANGE 67 WEST, 6TH PRINCIPAL MERIDIAN, ADAMS COUNTY, COLORADO.

I HEREBY CERTIFY THAT THIS WELL LOCATION CERTIFICATE WAS PREPARED BY ME, OR UNDER MY DIRECT SUPERVISION, THAT THE FIELD WORK WAS COMPLETED ON 8/18/2015, THAT IT IS NOT A LAND SURVEY PLAT OR AN IMPROVEMENT SURVEY PLAT, AND THAT IT IS NOT TO BE RELIED UPON FOR ESTABLISHMENT OF FENCE, BUILDING, OR OTHER FUTURE IMPROVEMENT LINES.

SURFACE HOLE:
LATITUDE: 39.999718° N
LONGITUDE: 104.892586° W
PDOP: 1.6
1/4, 1/4: NW1/4NE1/4

LANDING POINT:
LATITUDE: 39.999096° N
LONGITUDE: 104.891457° W

BOTTOM HOLE:
LATITUDE: 39.987723° N
LONGITUDE: 104.891475° W

LEGEND

- - FOUND/SET SURVEY MONUMENT PER MONUMENT RECORD EXCEPTIONS NOTED.
- - CALCULATED SURVEY MONUMENT POSITION
- (-) - CALCULATED DIMENSION



AARON A. DEMO

Professional Land Surveyor Registration No. 38285

State of Colorado

FOR AND ON BEHALF OF BASELINE ENGINEERING CORP.

Completed

10/2/2015

PROJECT #EXT01S67W04-01