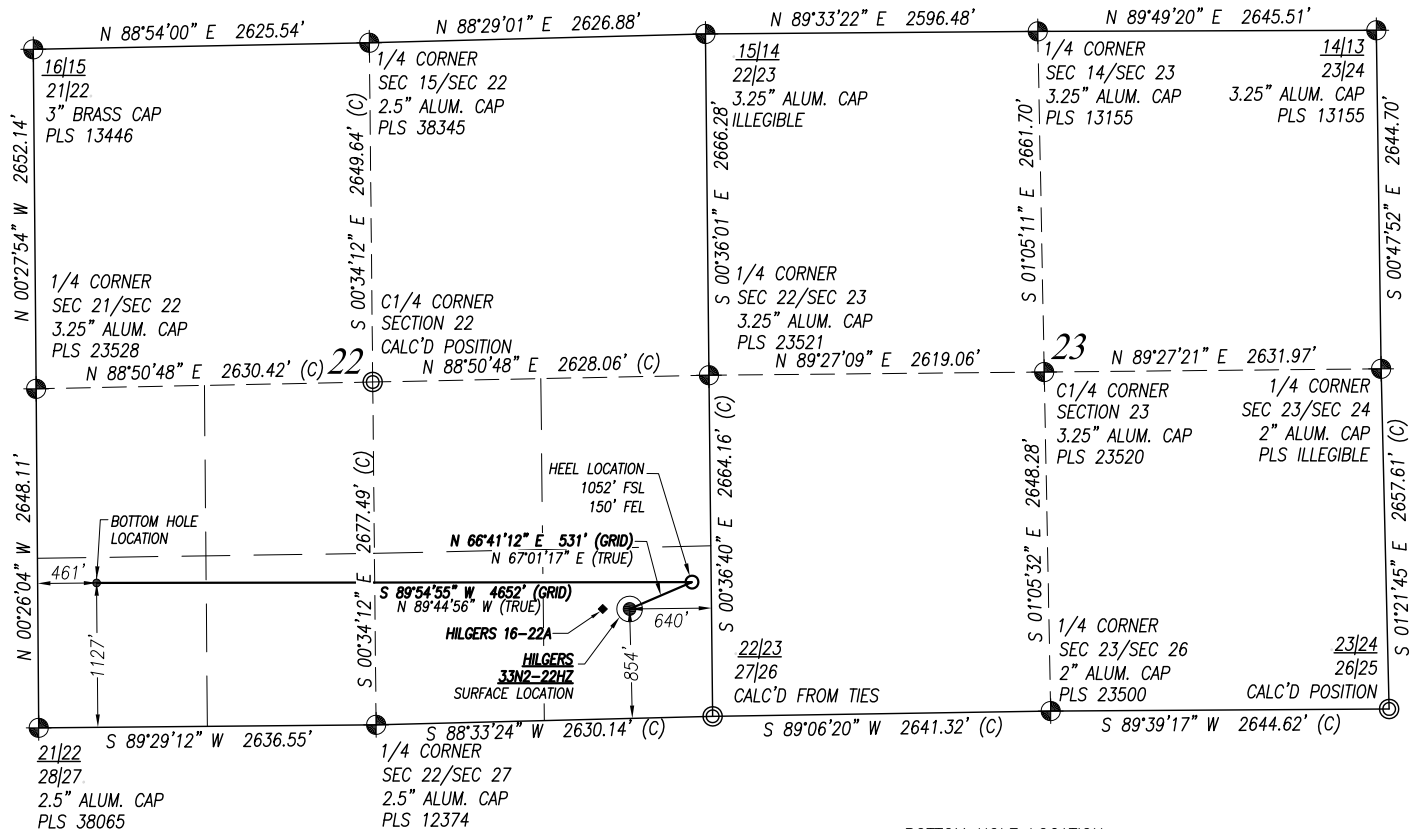


WELL LOCATION CERTIFICATE: HILGERS 33N2-22HZ

SECTION 22, TOWNSHIP 3 NORTH, RANGE 68 WEST, 6TH P.M.



SURFACE LOCATION
GROUND ELEVATION=5000'

NAD 83
LATITUDE= 40.206603°
LONGITUDE= -104.981831°

LATITUDE= 40°12'23.772"
LONGITUDE= -104°58'54.590"

HEEL LOCATION

NAD 83
LATITUDE= 40.207172°
LONGITUDE= -104.980081°

LATITUDE= 40°12'25.820"
LONGITUDE= -104°58'48.292"

BOTTOM HOLE LOCATION

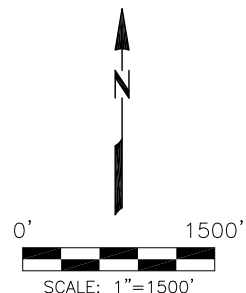
NAD 83
LATITUDE= 40.207227°
LONGITUDE= -104.996737°

LATITUDE= 40°12'26.017"
LONGITUDE= -104°59'48.253"

SURVEYOR'S CERTIFICATION:

I, Mark A. Hall, a licensed professional land surveyor in the state of Colorado do hereby certify to **KERR-MCGEE OIL & GAS ONSHORE LP** that the survey and well location certificate shown hereon were done by me or under my direct supervision and that the drawing shown hereon accurately depicts the proposed location of the well. this certificate does not represent a land survey plat or improvement survey plat as defined by c.r.s. 38-51-102 and cannot be relied upon to determine ownership.

Mark A. Hall, PLS #36073
FOR AND ON BEHALF OF ACKLAM, INC.
195 Telluride Street Suite 7
Brighton CO 80601



PREPARED FOR:

KerrMcGee
Kerr-McGee Oil & Gas Onshore L.P.
1099 18th Street
Denver, Colorado 80202

Acklam, Inc.

DATE SURVEYED: 06/25/2015

DATE DRAFTED: 11/02/2015

DRAFTED BY: SMF CHK BY: JAM

JOB No. 155004 REVISED:

WELL LOCATION CERTIFICATE

HILGERS 33N2-22HZ

SURFACE 854' FSL 640' FEL
GROUND ELEVATION=5000'

HEEL 1052' FSL 150' FEL
BOTTOM HOLE 1127' FSL 461' FWL

SE1/4 SE1/4
SECTION 22, T3N, R68W, 6TH PM
WELD COUNTY, COLORADO

NOTES:

- Found Section Corner
- Calculated Section Corner
- Basis of Elevations: NAVD88 (GEOID12).
- Basis of Bearings: Colorado coordinate system 1983 north zone ("GRID").
- Basis of Distances: GRID; Combined Factor=0.999717864.
- GPS Operator: **Jeff Hawkins** PDOP 2.1
- See attachments for existing improvements within 500 feet of the well pad.
- Well footages are measured at right angles to the section lines.
- The Bottom Hole Location bears **N 87°12'26" W 4170'** from the Surface Location.
- Existing well Hilgers 16-22A bears **N 89°59'35" W 210'** from the Surface Location.

NOTICE: According to Colorado law you must commence any legal action based upon any defect in this survey within three years after you first discover such defect. In no event may any action based upon any defect in this survey be commenced more than ten years from the date of the certification shown hereon.