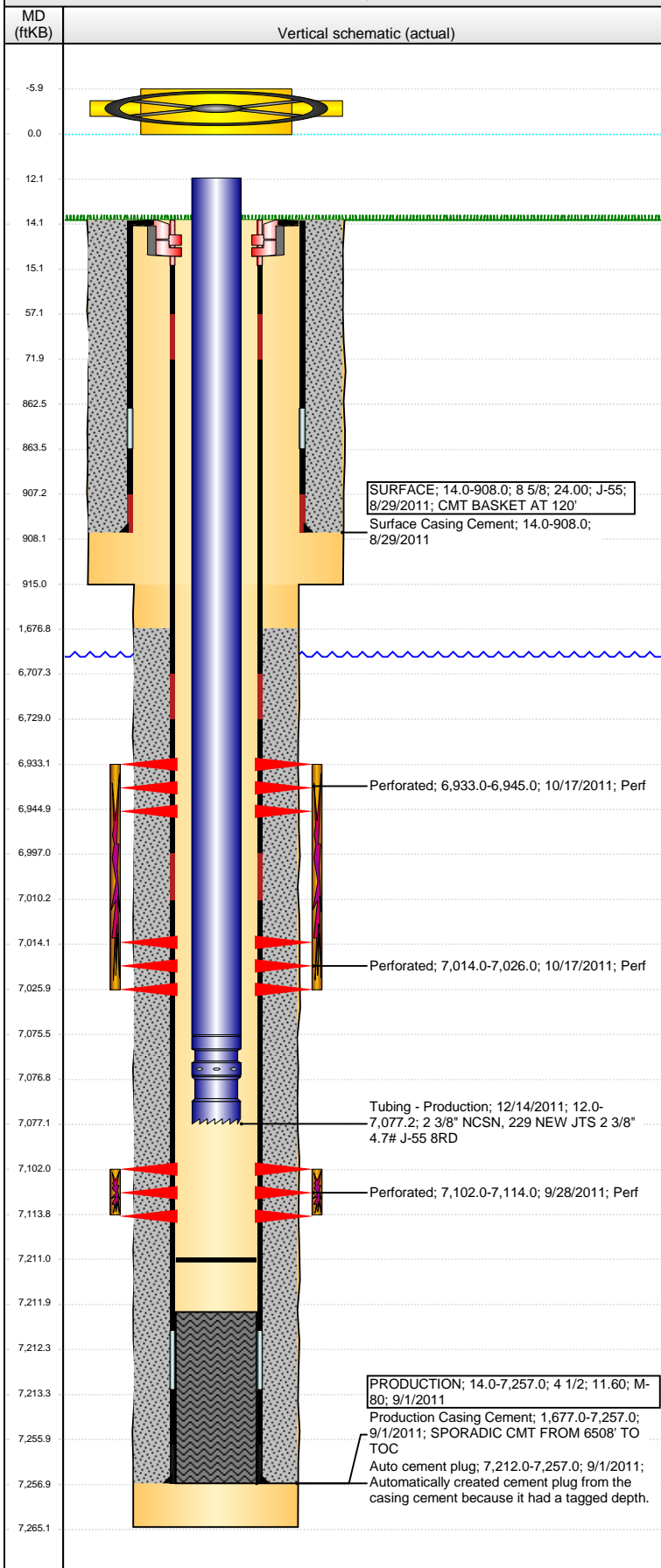


Well Name: TYE USX A15-03D

DEVIATED - ORIGINAL HOLE, 3/4/2016 7:02:06 AM



| Well Header | | | | | | | | | |
|---|-----------------------|-------------------------------|---------------------|------------------------------------|---------------------|-------------------------|---------------------|------------------|--|
| API 05-123-33910 | | Business Unit DJ BASIN | | District 15 | | Well Config DEVIATED | | | |
| Original KB Elevation (ft) 4,811.00 | | KB - GL / MSL (ftKB) 14.00 | | Spud Date 8/28/2011 | | P & A Date | | | |
| Comment | | | | | | | | | |
| Directions To Well WCR 55 & WCR 70; EAST 0.4 MILE, SOUTHEAST 0.14 MILE, SOUTH 0.2 INTO LOCATION. | | | | | | | | | |
| Congressional Location | | | | | | | | | |
| Quarter 1 | Quarter 2 | Quarter 3 | Quarter 4 | Section | Township | Twnshp N... | Range | Rng E/W Dir | |
| | | SE | NW | 15 | 6 | N | 64 | W | |
| Bottom Hole Location | | | | | | | | | |
| North-South Distance (ft) 600.0 | | From N or S Line FNL | | East-West Distance (ft) 1,930.0 | | From E or W Line FWL | | | |
| Plug Back Total Depths | | | | | | | | | |
| Date | Depth (ftKB) | Method | | | Com | | | | |
| 9/1/2011 | 7,212.0 | CASING TALLY | | | FLOAT COLLAR | | | | |
| 9/14/2011 | 7,175.0 | CASED HOLE LOG | | | DEPTH LOGGER ON CBL | | | | |
| 12/14/2011 | 7,211.0 | TBG TALLY | | | | | | | |
| Wellbore Sections | | | | | | | | | |
| Section Des | | | Size (in) | | Act Top, MD (ftKB) | | Act Btm, MD (ftKB) | | |
| SURFACE | | | 12 1/4 | | 14.0 | | 915.0 | | |
| PRODUCTION | | | 7 7/8 | | 915.0 | | 7,265.0 | | |
| Zone Statuses | | | | | | | | | |
| Zone Name | | Status Date | Status | Fluid Type | Job | Prod Method | | | |
| CODELL | | 10/21/2011 | PR | | DRILLING/CO... | | | | |
| NIOBRARA | | 10/21/2011 | PR | | DRILLING/CO... | | | | |
| Casing Strings | | | | | | | | | |
| SURFACE, 908.0ftKB | | | | | | | | | |
| Casing Description | | Run Date | OD (in) | Wt/Len (l... | Grade | Top, MD (ft... | MD (ftKB) | | |
| SURFACE | | 8/29/2011 | 8 5/8 | 24.00 | J-55 | 14.0 | 908.0 | | |
| PRODUCTION, 7,257.0ftKB | | | | | | | | | |
| Casing Description | | Run Date | OD (in) | Wt/Len (l... | Grade | Top, MD (ft... | MD (ftKB) | | |
| PRODUCTION | | 9/1/2011 | 4 1/2 | 11.60 | M-80 | 14.0 | 7,257.0 | | |
| Cement | | | | | | | | | |
| Description | | | | | Top Depth (ftKB) | | Bottom Depth (ftKB) | | |
| Surface Casing Cement | | | | | 14.0 | | 908.0 | | |
| Description | | | | | Top Depth (ftKB) | | Bottom Depth (ftKB) | | |
| Production Casing Cement | | | | | 1,677.0 | | 7,257.0 | | |
| Tubing Strings | | | | | | | | | |
| Tubing Description | | Run Date | String... | ID (in) | Wt (lb/ft) | Grade | Len (ft) | Set De... | |
| Tubing - Production | | 12/14/2011 | 2 3/8 | 1.995 | 4.70 | J-55 | 7,065.17 | 6,959.5 | |
| Tubing Components | | | | | | | | | |
| Item Des | | OD (in) | Wt (lb/ft) | Grade | Jts | Len (ft) | Btm (ftKB) | Btm (TVD) (ftKB) | |
| EUE 8rd Tubing | | 2 3/8 | 4.70 | J-55 | 229 | 7,063.52 | 7,075.5 | 6,957.8 | |
| Seating Nipple | | 2 3/8 | 5.40 | J-55 | 1 | 1.20 | 7,076.7 | 6,959.0 | |
| Notched collar | | 2 3/8 | | J-55 | 1 | 0.45 | 7,077.2 | 6,959.5 | |
| Perforation Data | | | | | | | | | |
| Zone | | Bnch/St g | Entered Shot Total | Top (ftKB) | | Btm (ftKB) | | Date | |
| NIOBRARA, ORIGINAL HOLE | | B | 24 | 6,933.00 | | 6,945.00 | | 10/17/2011 | |
| NIOBRARA, ORIGINAL HOLE | | C | 24 | 7,014.00 | | 7,026.00 | | 10/17/2011 | |
| CODELL, ORIGINAL HOLE | | 1 | 48 | 7,102.00 | | 7,114.00 | | 9/28/2011 | |
| Stimulations & Treatments | | | | | | | | | |
| Date | Zone | | | Primary Job Type | | | | | |
| 10/17/2011 | CODELL, ORIGINAL HOLE | | | DRILLING/COMPLETION - ORIGINAL | | | | | |
| Technical Result | | | Tech Result Details | | | Tech Result Note | | | |
| Success | | | According to Plan | | | | | | |
| Comment | | | | | | | | | |
| (CODELL): BREAK - 3535 @ 2.7 BPM. ISIP - 2893, 5 MIN - 2437. REVERSE STEP - 24 PERFS OPEN. NWB - 250 PSI, PERF FRIC - 188 PSI, TUBULAR - 783 PSI. FINAL ISIP - 3348, 5 MIN - 3138. AVG VISC - 23.9, AVG PH - 10.05, AVG TEMP - 65.9. TREATMENT WENT WELL. | | | | | | | | | |

Well Name: TYE USX A15-03D

DEVIATED - ORIGINAL HOLE, 3/4/2016 7:02:07 AM

Stimulations & Treatments

| | | |
|------------------|-------------------------|--------------------------------|
| Date | Zone | Primary Job Type |
| 10/17/2011 | NIOBRARA, ORIGINAL HOLE | DRILLING/COMPLETION - ORIGINAL |
| Technical Result | Tech Result Details | Tech Result Note |
| Success | According to Plan | |

Comment
(NIOBRARA C&B): BREAK - 2958 @ 3.1 BPM. ISIP - 3424. FINAL ISIP - 3424, 5 MIN - 3301, AVG VISC - 26.2, AVG TEMP - 65.3, AVG PH - 10.16. TREATMENT WENT WELL.

Other In Hole

| Run Date | Des | OD (in) | Top (ftKB) | Btm (ftKB) |
|----------|-----|---------|------------|------------|
| | | | | |

Logs

| Date | Type | Top, MD (ftKB) | Btm, MD (ftKB) |
|-----------|---|----------------|----------------|
| 8/31/2011 | SPECTRAL DENSITY/Pe/DSN NEUTRON/SP/ARRAY COMPENSATED TRUE RESISTIVITY | 908.0 | 7,265.0 |
| 8/31/2011 | SPECTRAL GAMMA RAY | 6,598.0 | 7,224.0 |
| 9/14/2011 | CBL/CCL/GR | 1,135.0 | 7,174.0 |

