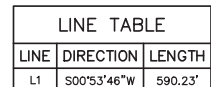


*T8N, R66W, 6th P.M.*

- 2001 Alum. Cap,  
#10740, 0.6'  
Below Ground  
Lat: 40.668211°  
Long: 104.753883°



CERTIFICATE OF REGISTRATION  
 ABOVE SIGNED AND SEALED BY THE REGISTERED LAND SURVEYOR  
 STATE OF ARIZONA, IN WITNESS WHEREOF, I HAVE HEREUNTO SET MY HAND AND SEAL OF OFFICE  
 THIS 15TH DAY OF APRIL, 2015.

REGISTERED LAND SURVEYOR  
 REGISTRATION NO. 28285  
 STATE OF ARIZONA

PROFESSIONAL LAND SURVEYOR  
 15-15

## WELL LOCATION PLAT



**UELS, LLC**  
Corporate Office \* 85 South 200 East  
Vernal, UT 84078 \* (435) 789-1017

