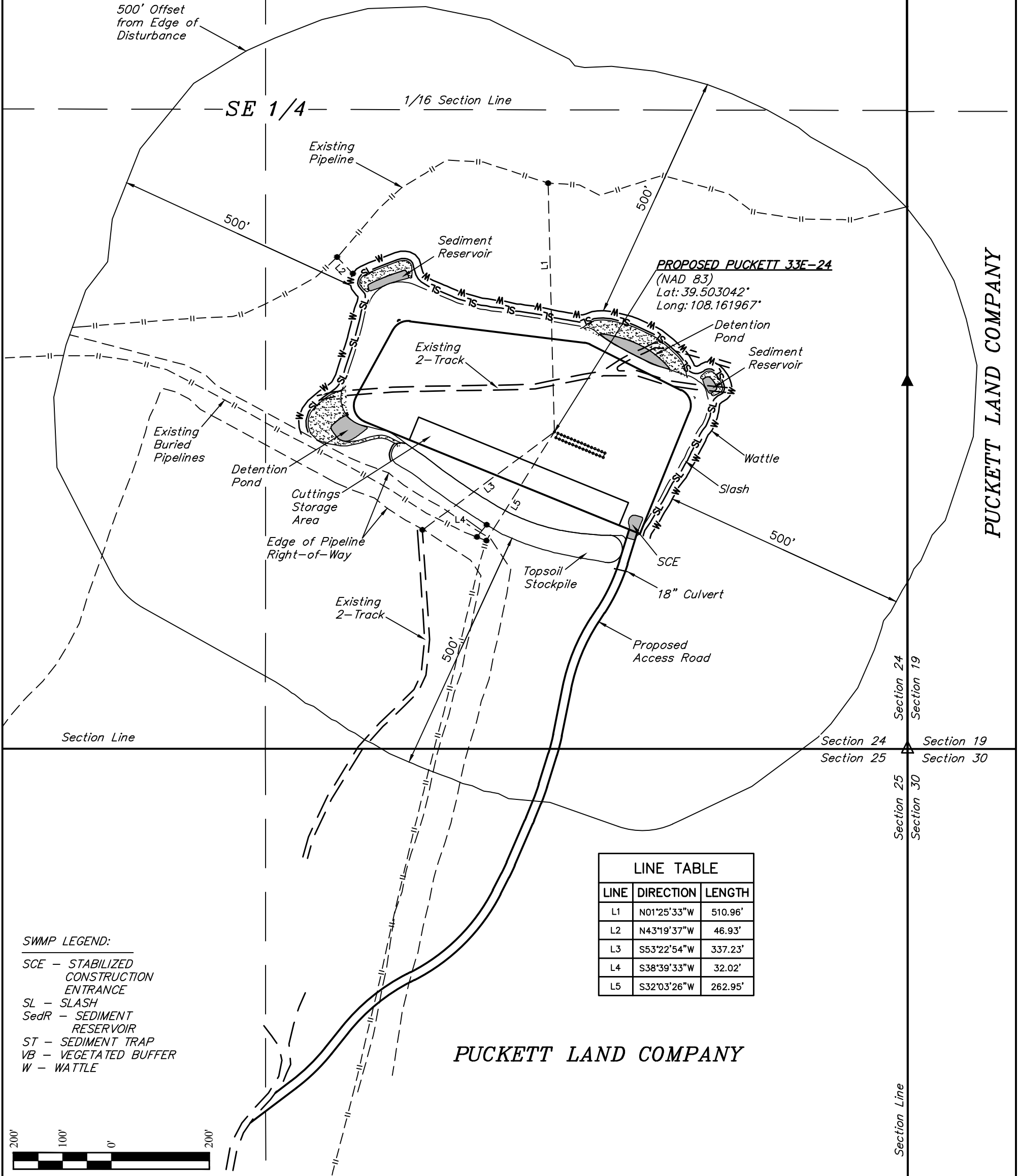


R 97 W
R 96 W

PUCKETT LAND COMPANY



SWMP LEGEND:
SCE - STABILIZED CONSTRUCTION ENTRANCE
SL - SLASH
SedR - SEDIMENT RESERVOIR
ST - SEDIMENT TRAP
VB - VEGETATED BUFFER
W - WATTLE

LINE TABLE		
LINE	DIRECTION	LENGTH
L1	N01°25'33"W	510.96'
L2	N43°19'37"W	46.93'
L3	S53°22'54"W	337.23'
L4	S38°39'33"W	32.02'
L5	S32°03'26"W	262.95'

PUCKETT LAND COMPANY



Caerus Oil & Gas LLC

MESA P24-697
SE 1/4 SE 1/4, SECTION 24, T6S, R97W, 6th P.M.
GARFIELD COUNTY, COLORADO

SURVEYED BY	DATE	REVISED BY	DATE
BRIAN BAKER	12-13-15		
DRAWN BY	DATE		
M.D.	01-28-16		
SCALE	1" = 200'		

LOCATION DRAWING

FIGURE #5



UELS, LLC
Corporate Office * 85 South 200 East
Vernal, UT 84078 * (435) 789-1017