



Premier Directional Drilling
12941 North Freeway Suite 400
Houston, Texas 77060
PH: #281-673-4000

Whisper Rock 2C-25HZ
Scale 5":100' - MD
12/5/2015 12:02 PM

Oper. Company: Anadarko Petroleum Corporation

State: Colorado

Well: Whisper Rock 2C-25HZ

County: Weld

Field: Wattenberg

Country: US

Rig: Precision 462

Location: Wilson Ranch 8-26HZ Pad

Well ID: 05123412960000

Start Date: 12/03/2015 03:00:00

Job Number: R15414

End Date: 12/05/2015 11:45:00

Notes: LWD Real Time Data Log
Gamma Correction Determined by Pipe ID & OD, Mud Weight & Bit Size

Latitude: 40.286223

Elev KB: 20'

Longitude: -104.962903

Elev DF: 5012'

Elev GL: 4992'

Notes: Datum: NAD1983 Map Zone: 13N (108 W to 102 W) Total Correction: 8.42° Grid Convergence: 0.02° (True North)

Operator 1: Justin Wallace

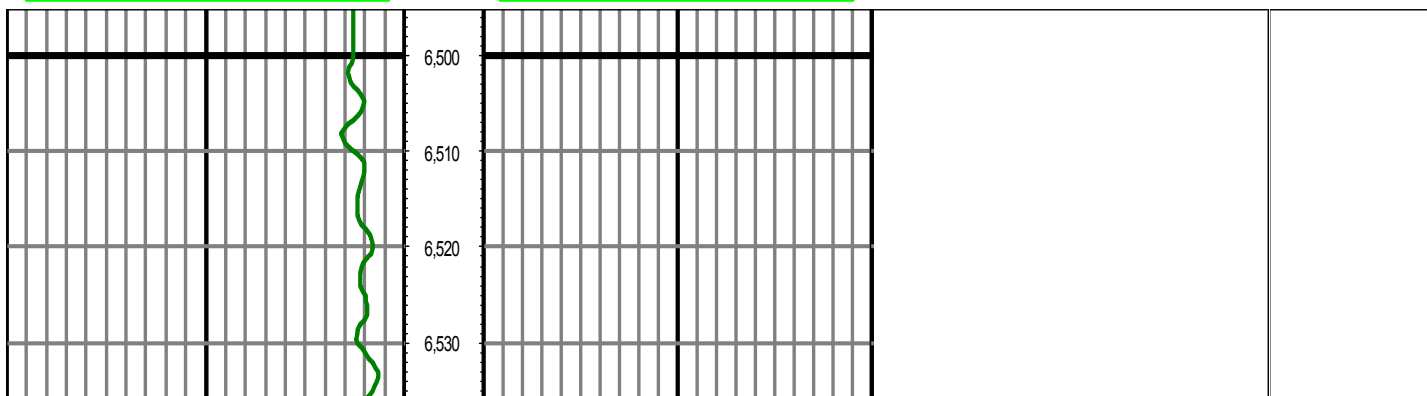
Operator 2: Jim Thammavong

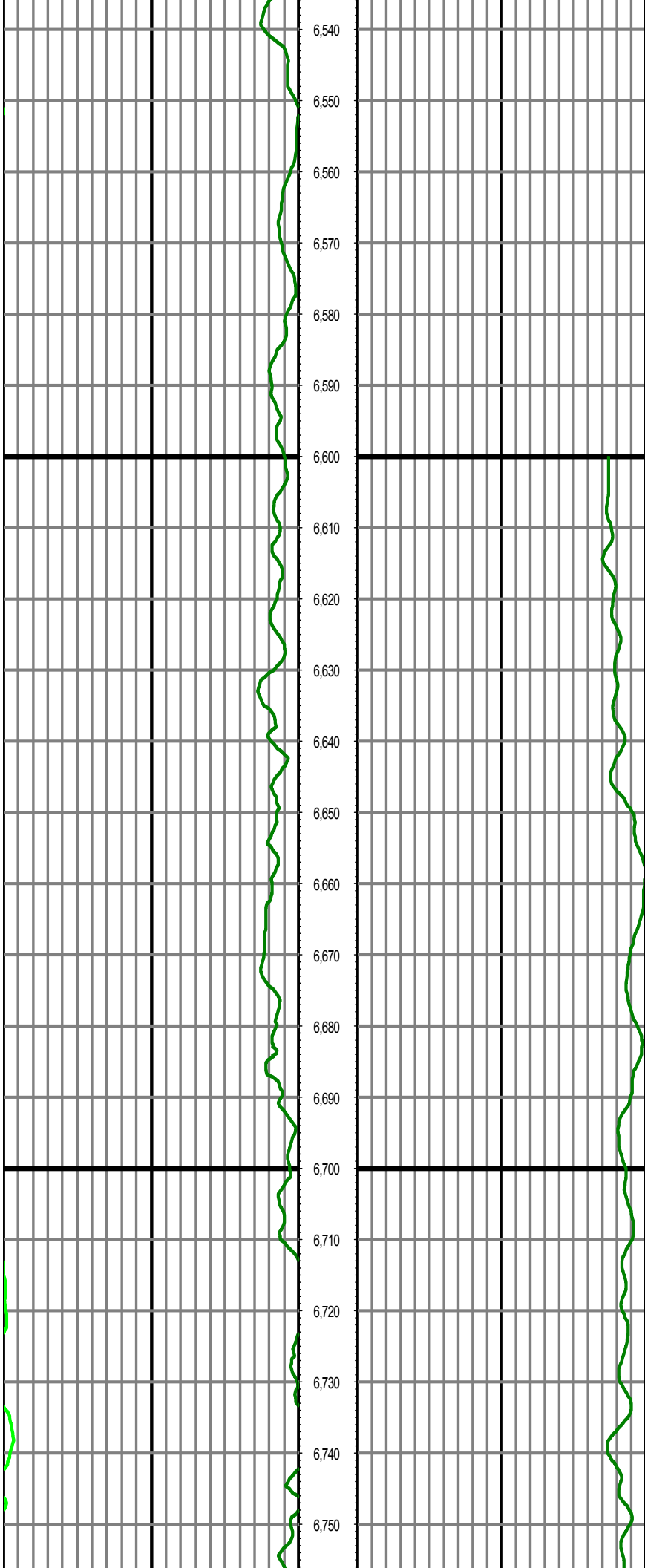
Notes: Smoothing: 6 Gap Fill: 10 Tool Type: Mud Pulse Calculation Method: Minimum Curvature

Tool Run Data	Run #1	Run #2	Run #3	Run #4	Run #5
Tool S/N	EGNF0070				
Bit Size	8.5				
Cal Factor	4.66				
Survey Offset:	72.00				
Gamma Offset	68.00				
Resistivity Offset	0.00				
Start Depth	6600.00				
StartDate	12/3/2015				
StartTime	03:00				
EndDepth	13611.00				
EndDate	12/5/2015				
EndTime	11:45				
Mud Type	OBM				
Mud Weight	9.25 - 9.5				
Chlorides	60000				
Hole Data			Casing Data		
Size	From	To	Size	From	To
8 1/2	1840.00	13611.00	9 5/8	0.00	1840.00

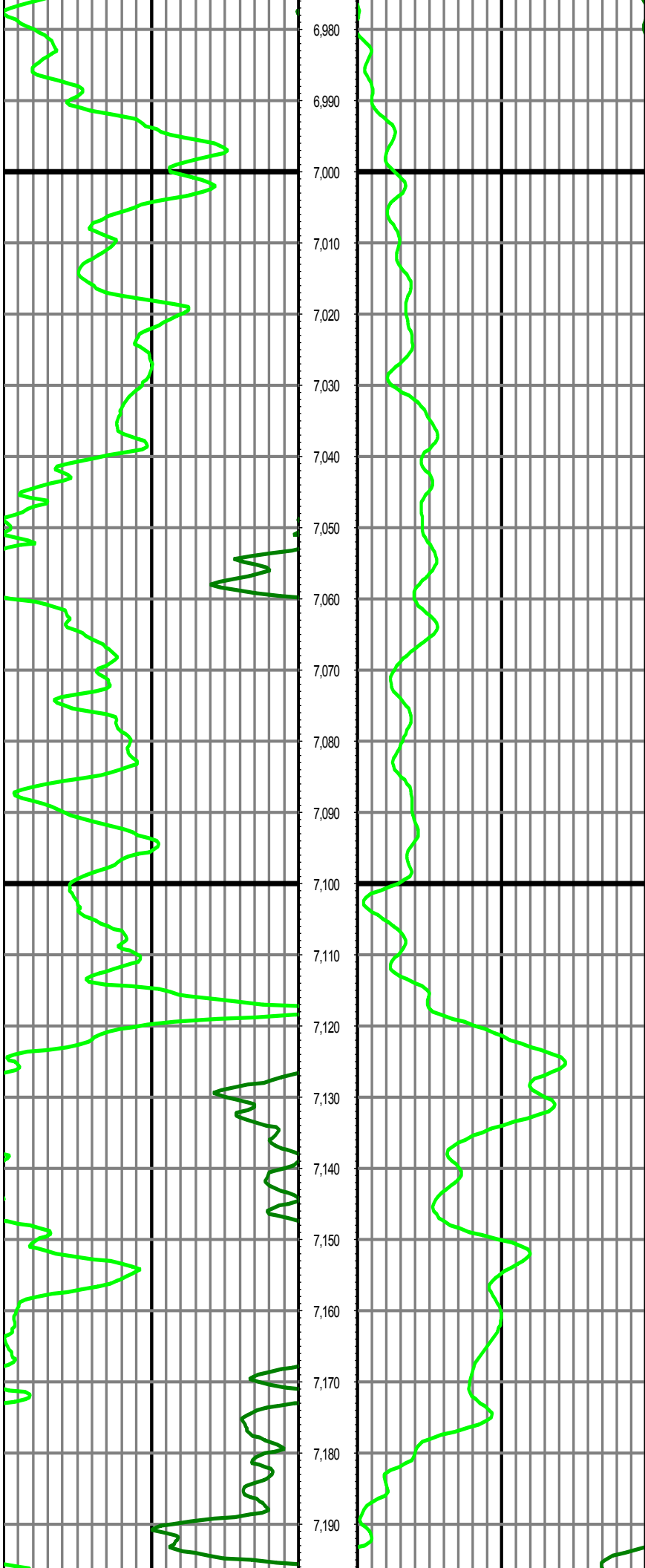
All interpretations are opinions based on inferences from electrical or other measurements and we cannot and do not guarantee the accuracy or correctness of any interpretation, and we shall not except in the case of gross or willful negligence on our part, be liable or responsible for any loss, cost damages or expenses incurred or sustained by anyone resulting from an interpretation made by any of our officers, agents, or employees.

0.00 GR(API) on TVD 200.00 MD 0.00 GR(API) on MD 200.00 Surveys (MD/INC/AZ/TVD/VS)
200.00 2 400.00 FT 200.00 2 400.00



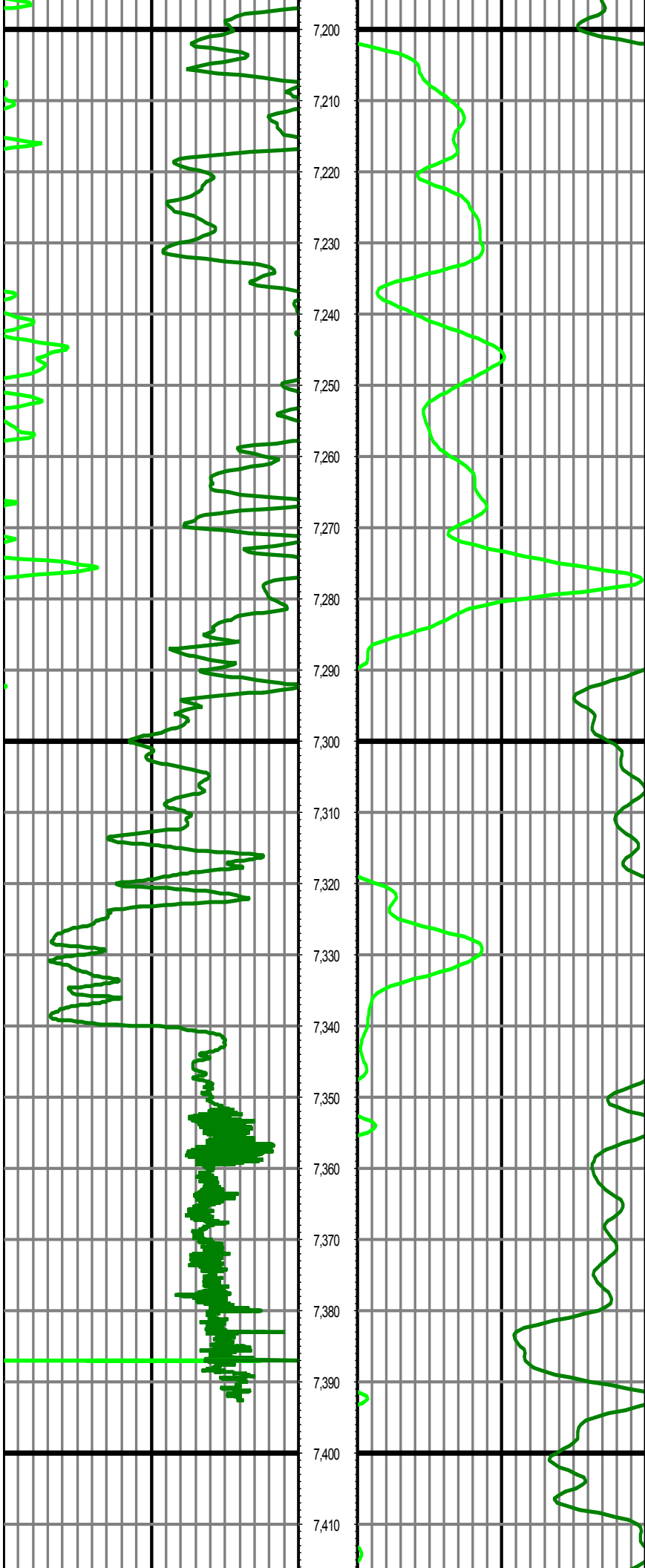


MD: 6688.00 INC: 1.10 AZ: 345.24 TVD: 6583.04 VS: -1100



MD: 7066.00 INC: 29.30 AZ: 79.44 TVD: 6947.77 VS: -1022

MD: 7162.00 INC: 34.40 AZ: 83.64 TVD: 7029.30 VS: -972



7,200

7,210

7,220

7,230

7,240

7,250

7,260

7,270

7,280

7,290

7,300

7,310

7,320

7,330

7,340

7,350

7,360

7,370

7,380

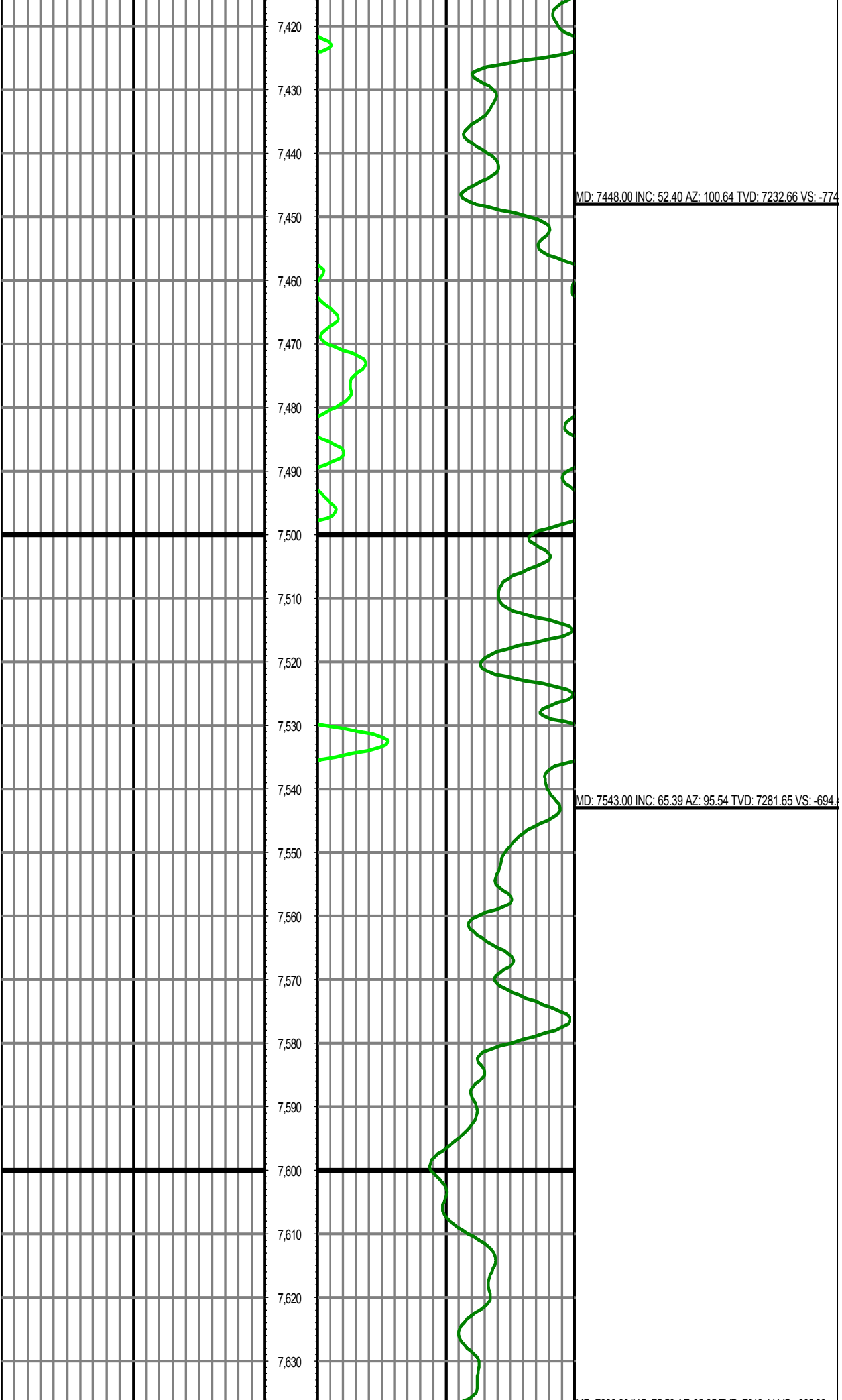
7,390

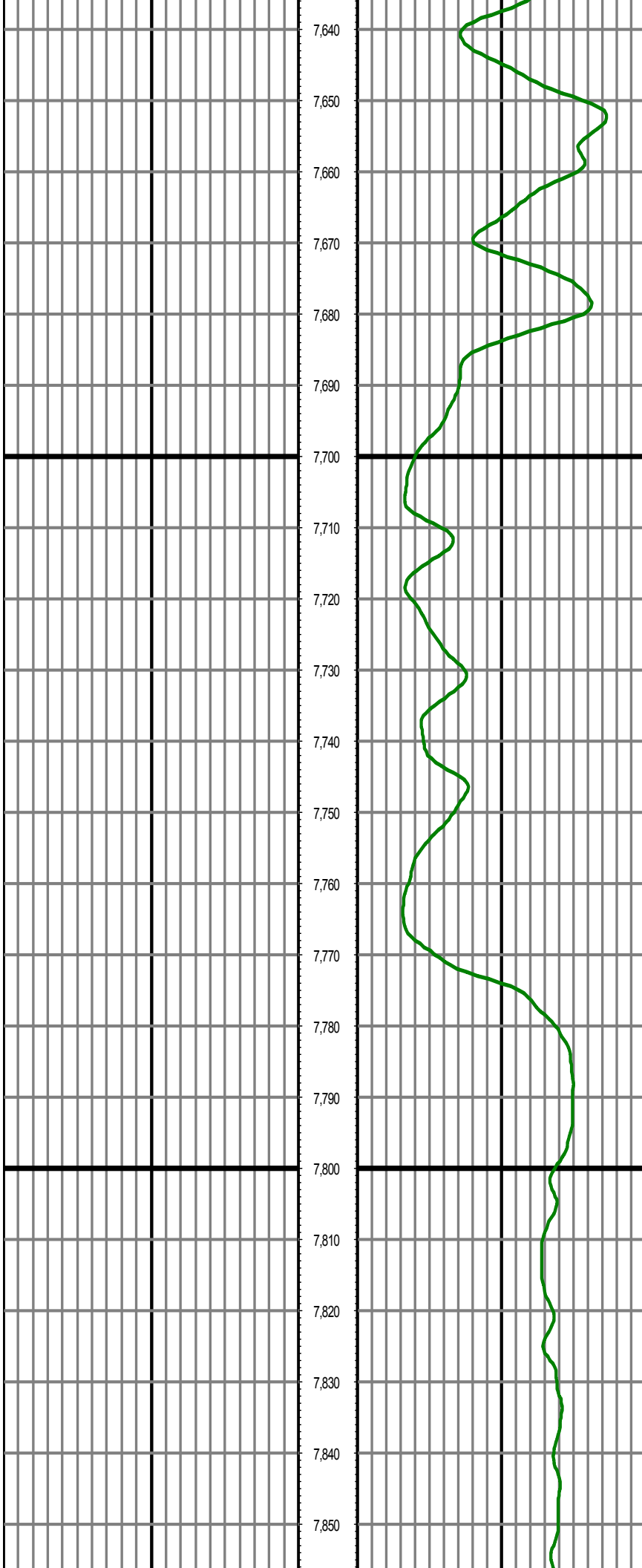
7,400

7,410

MD: 7257.00 INC: 41.30 AZ: 82.94 TVD: 7104.27 VS: -914.5

MD: 7352.00 INC: 48.60 AZ: 93.54 TVD: 7171.56 VS: -848.12

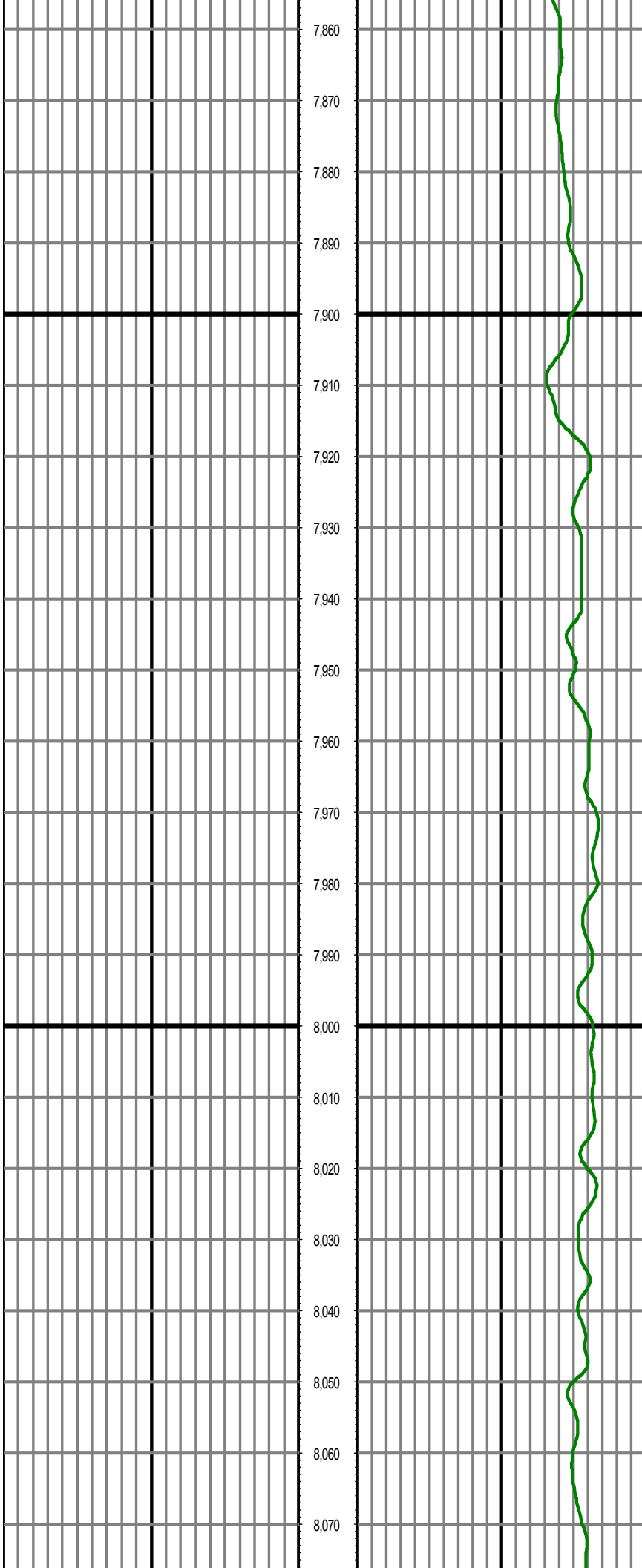




MD: 7638.00 INC: 75.50 AZ: 92.35 TVD: 7313.41 VS: -605.1

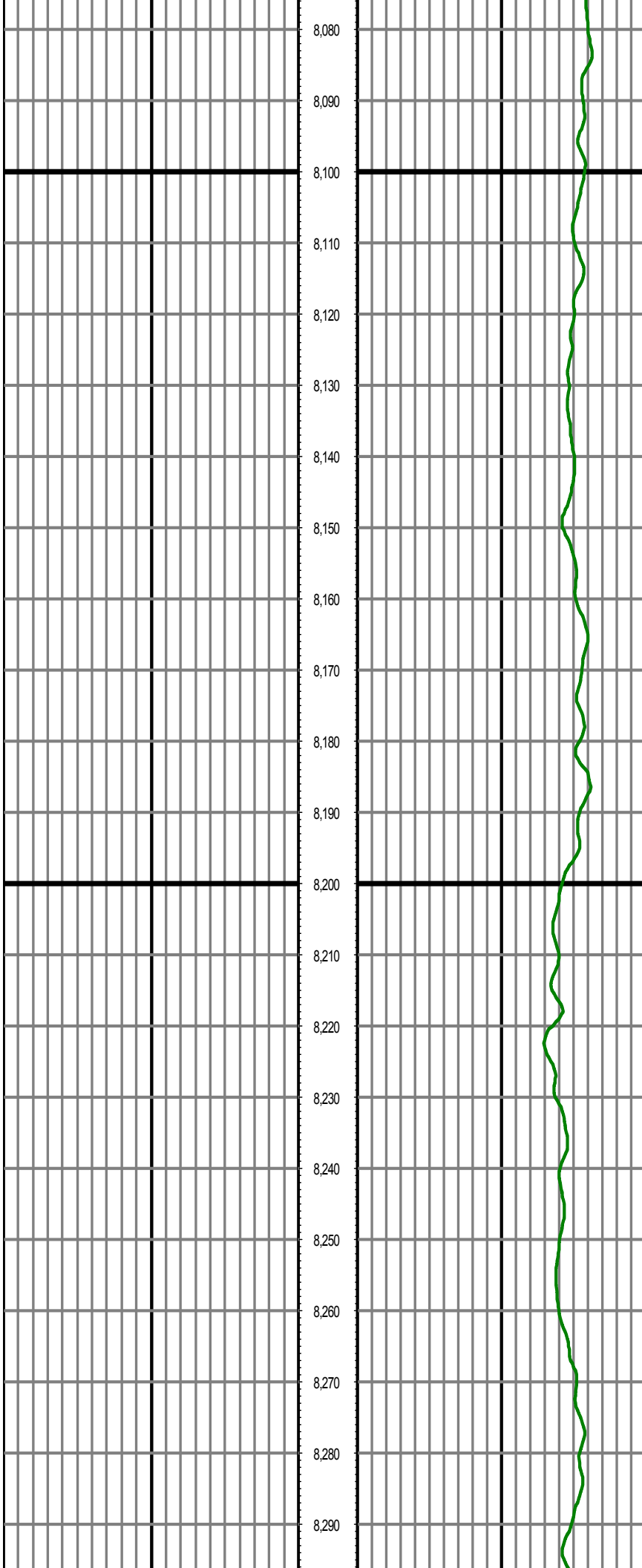
MD: 7733.00 INC: 78.90 AZ: 92.84 TVD: 7334.46 VS: -512.82

MD: 7828.00 INC: 84.70 AZ: 92.44 TVD: 7348.00 VS: -418.96



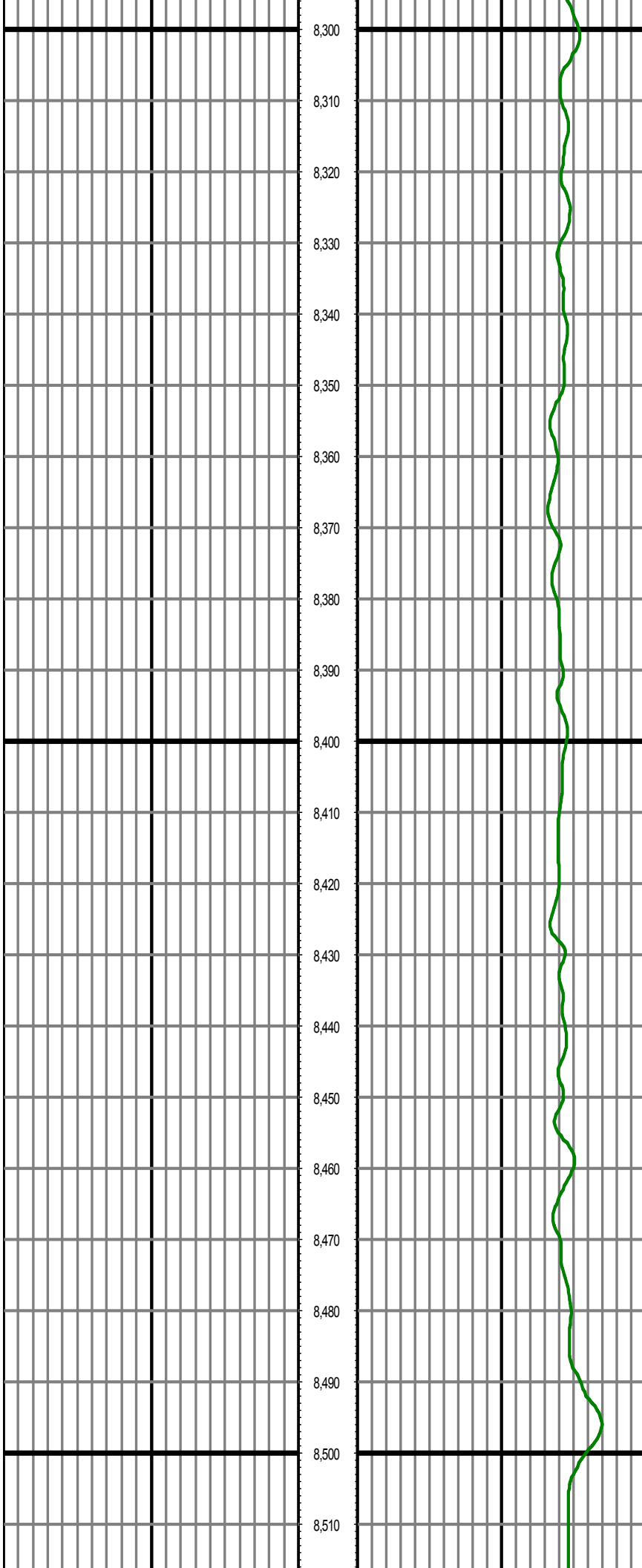
MD: 7923.00 INC: 88.50 AZ: 90.94 TVD: 7353.64 VS: -324.1

MD: 8018.00 INC: 89.70 AZ: 89.84 TVD: 7355.13 VS: -229.22



MD: 8114.00 INC: 90.20 AZ: 88.84 TVD: 7355.21 VS: -133.2

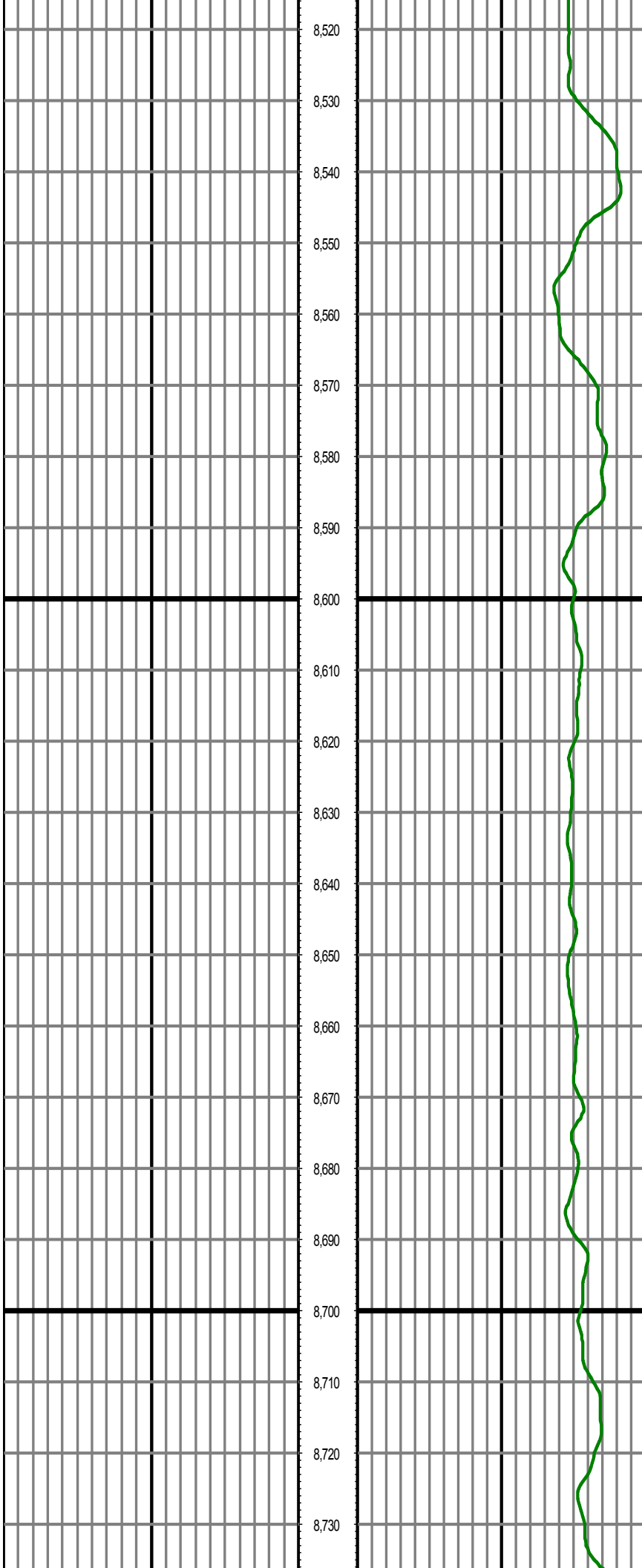
MD: 8209.00 INC: 91.80 AZ: 88.94 TVD: 7353.56 VS: -38.25



MD: 8304.00 INC: 90.30 AZ: 91.14 TVD: 7351.82 VS: 56.72

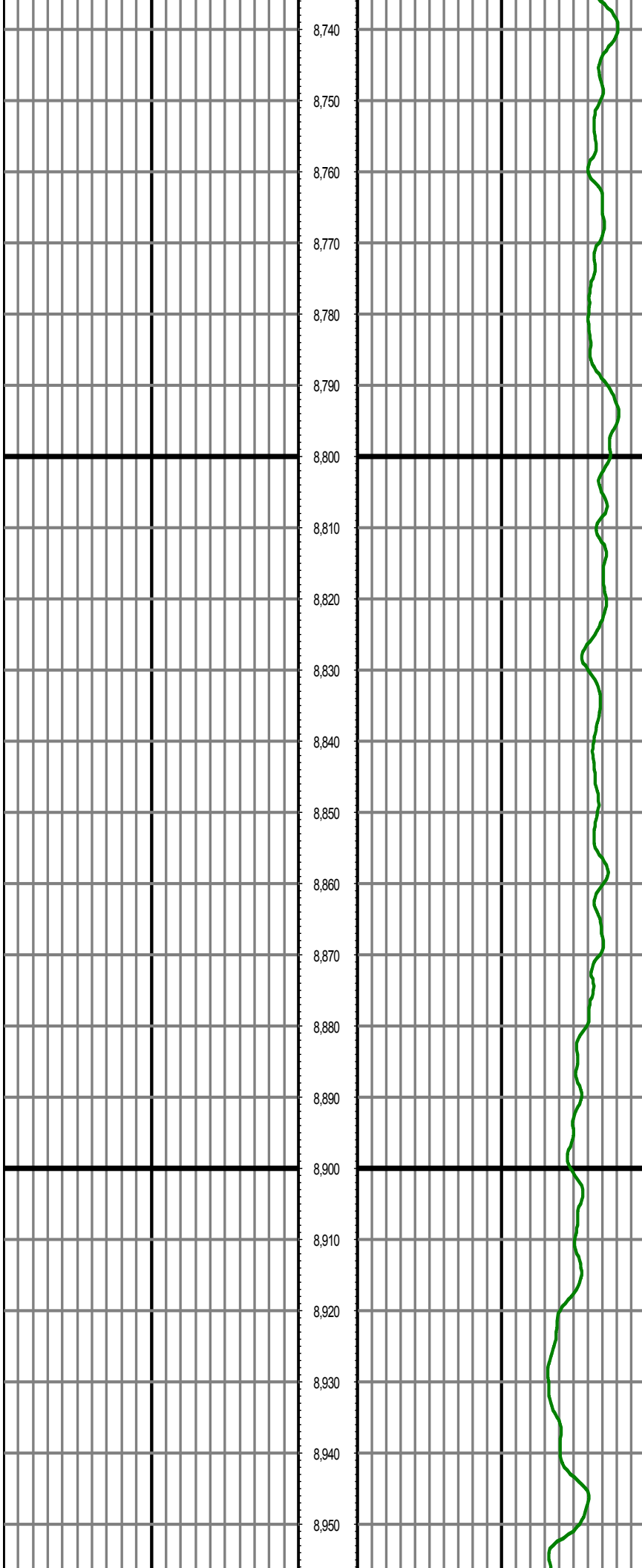
MD: 8397.00 INC: 88.10 AZ: 90.64 TVD: 7353.11 VS: 149.6

MD: 8491.00 INC: 88.50 AZ: 90.84 TVD: 7355.89 VS: 243.6



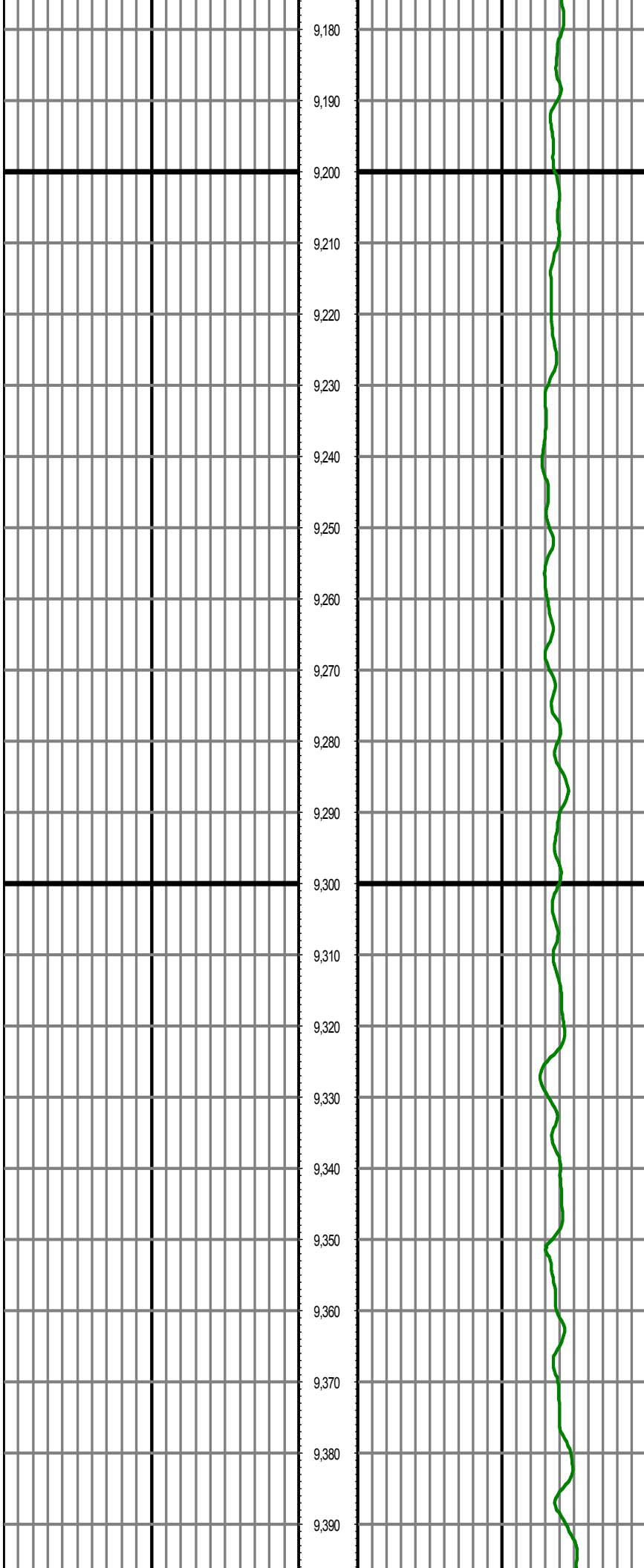
MD: 8586.00 INC: 89.40 AZ: 91.14 TVD: 7357.63 VS: 338.5

MD: 8681.00 INC: 91.10 AZ: 91.84 TVD: 7357.22 VS: 433.54



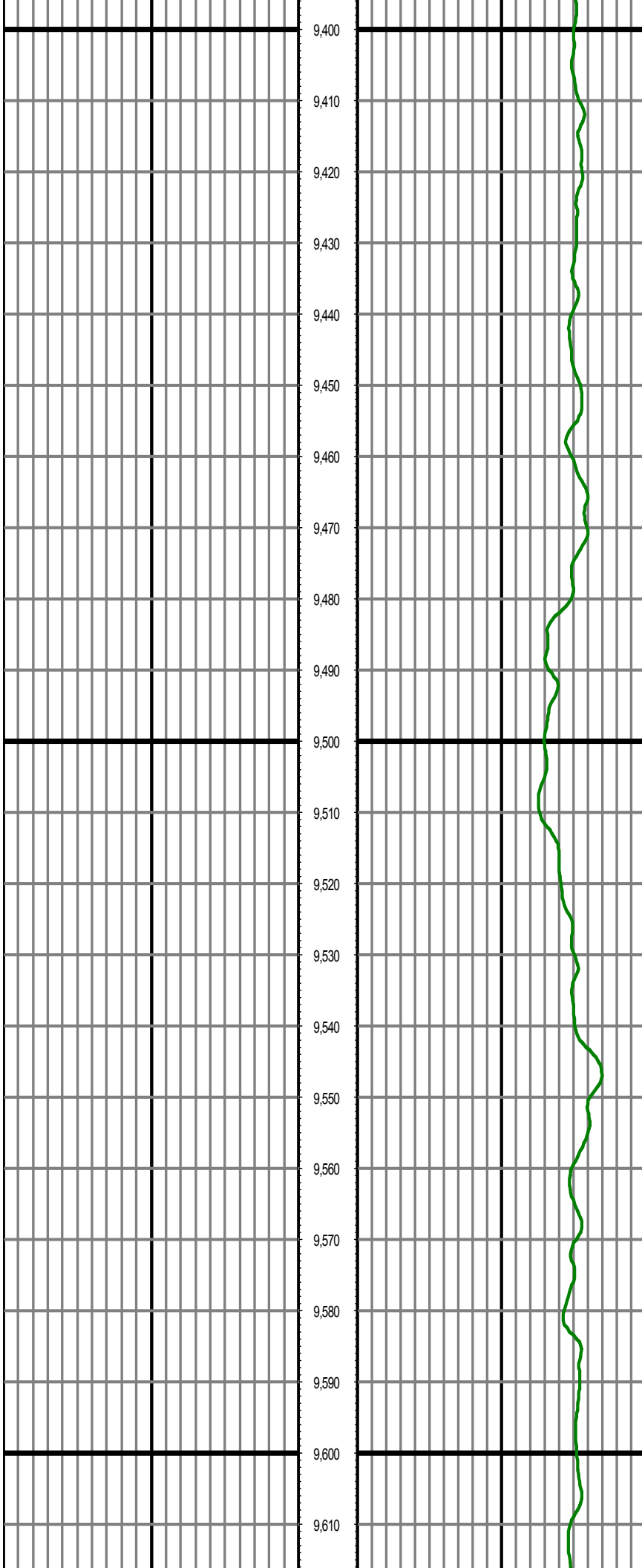
MD: 8776.00 INC: 88.70 AZ: 91.35 TVD: 7357.38 VS: 528.4

MD: 8871.00 INC: 89.20 AZ: 91.04 TVD: 7359.12 VS: 623.43



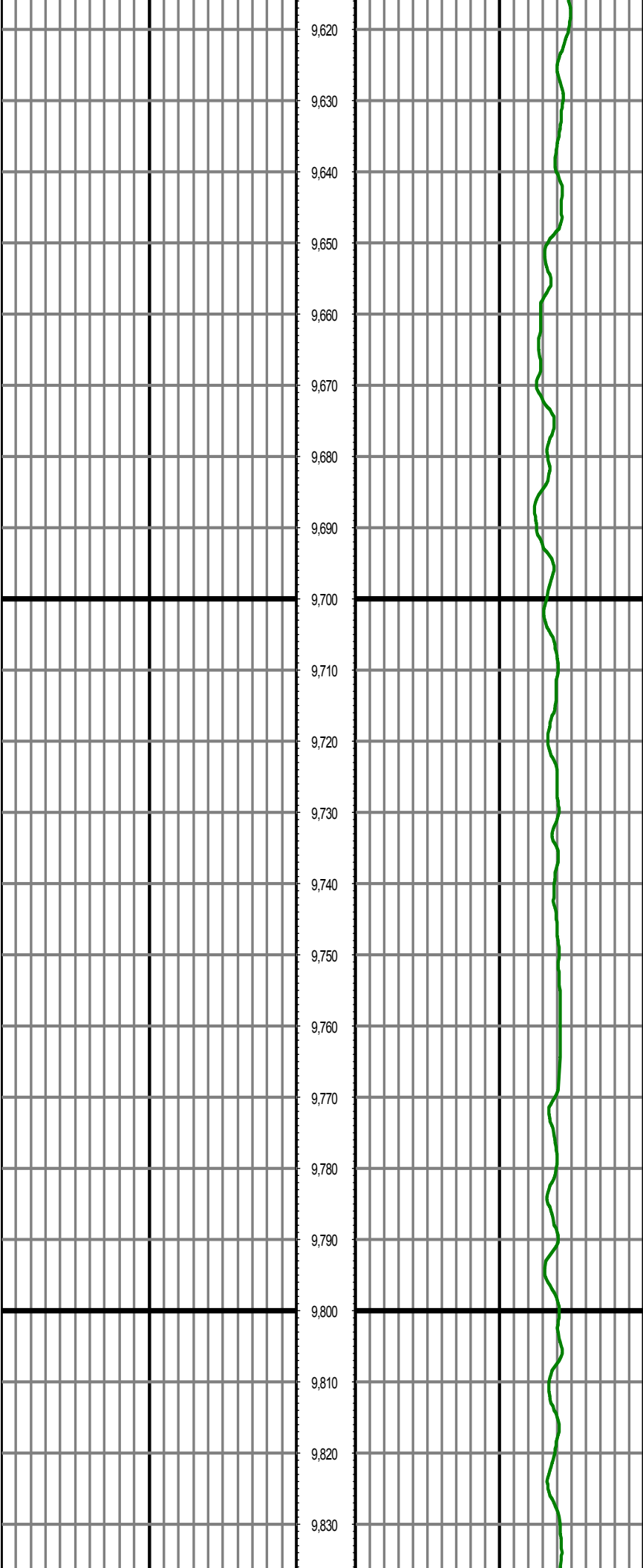
MD: 9252.00 INC: 89.90 AZ: 89.14 TVD: 7353.05 VS: 1004.1

MD: 9346.00 INC: 90.20 AZ: 89.14 TVD: 7352.97 VS: 1098.29



MD: 9442.00 INC: 90.70 AZ: 88.54 TVD: 7352.21 VS: 1194.0

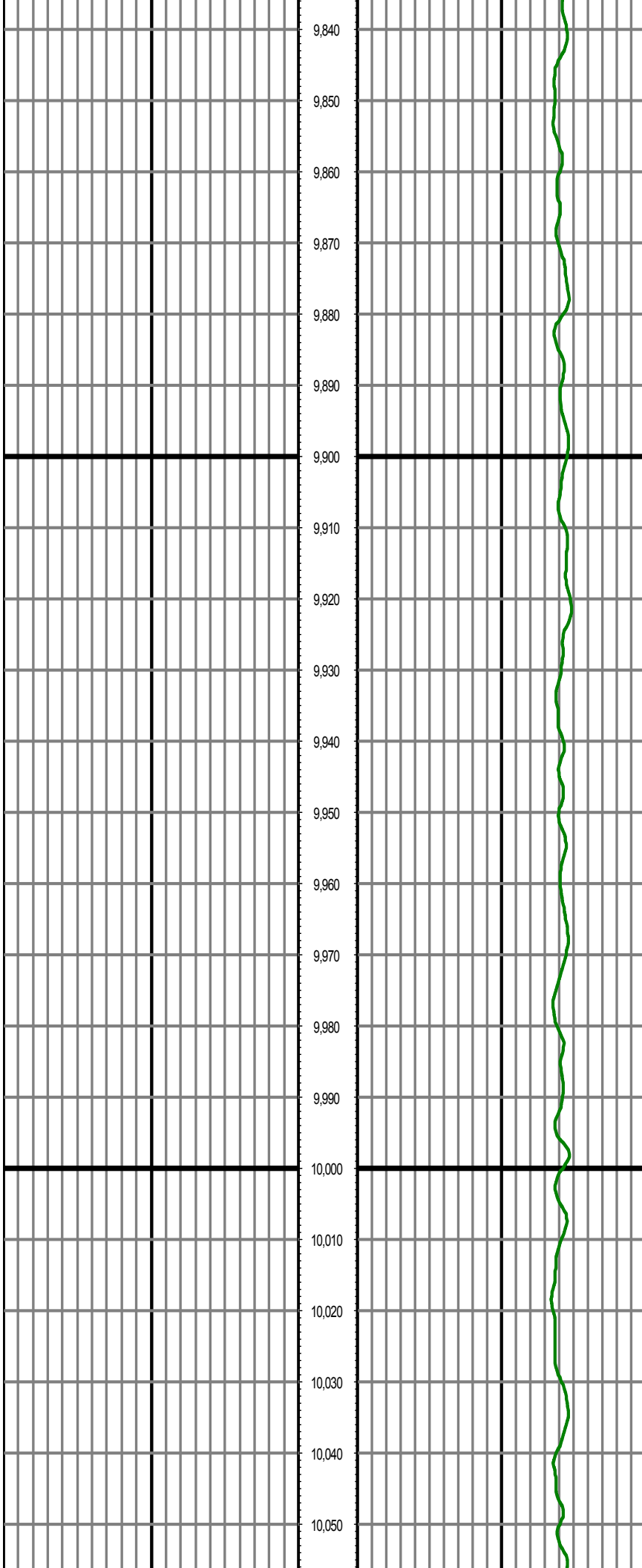
MD: 9537.00 INC: 88.10 AZ: 87.14 TVD: 7353.21 VS: 1289.21



MD: 9632.00 INC: 87.80 AZ: 86.64 TVD: 7356.60 VS: 1384.1

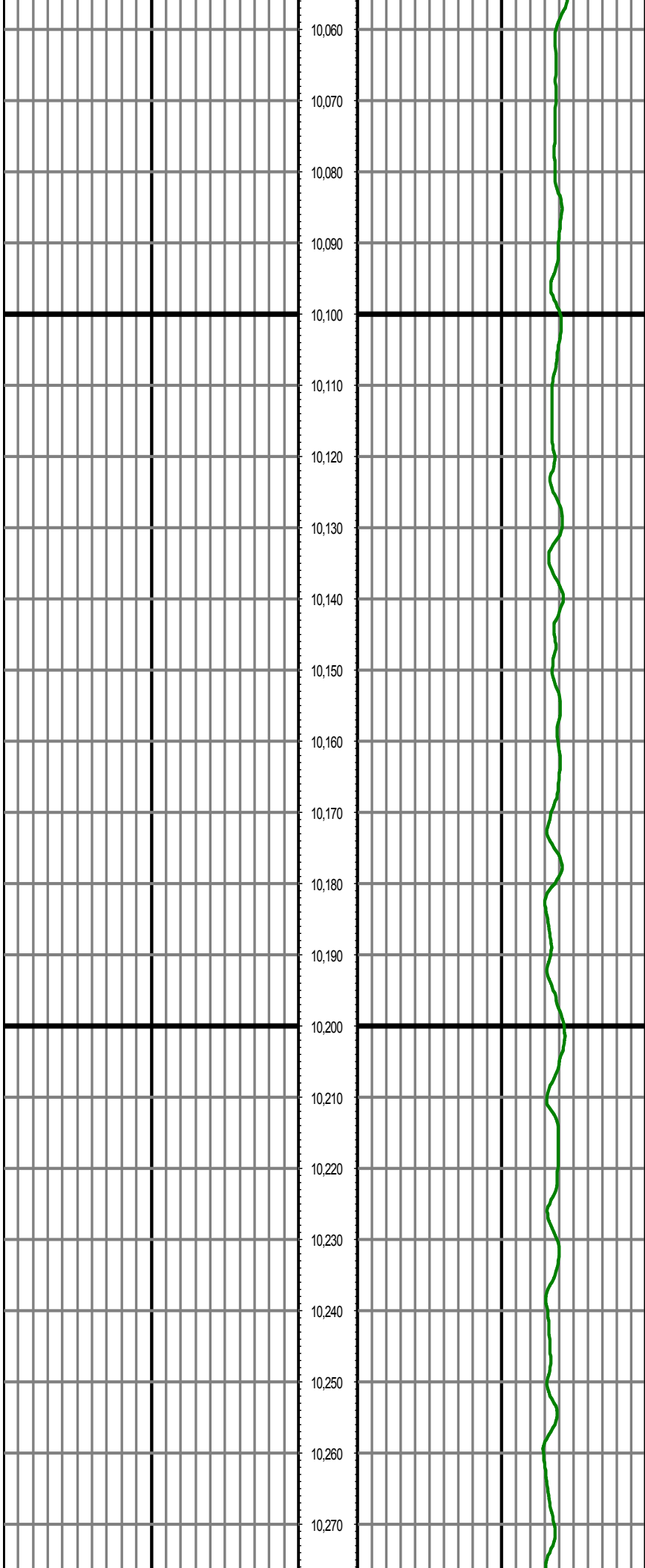
MD: 9727.00 INC: 88.50 AZ: 86.14 TVD: 7359.67 VS: 1478.82

MD: 9822.00 INC: 88.80 AZ: 87.54 TVD: 7361.91 VS: 1573.68



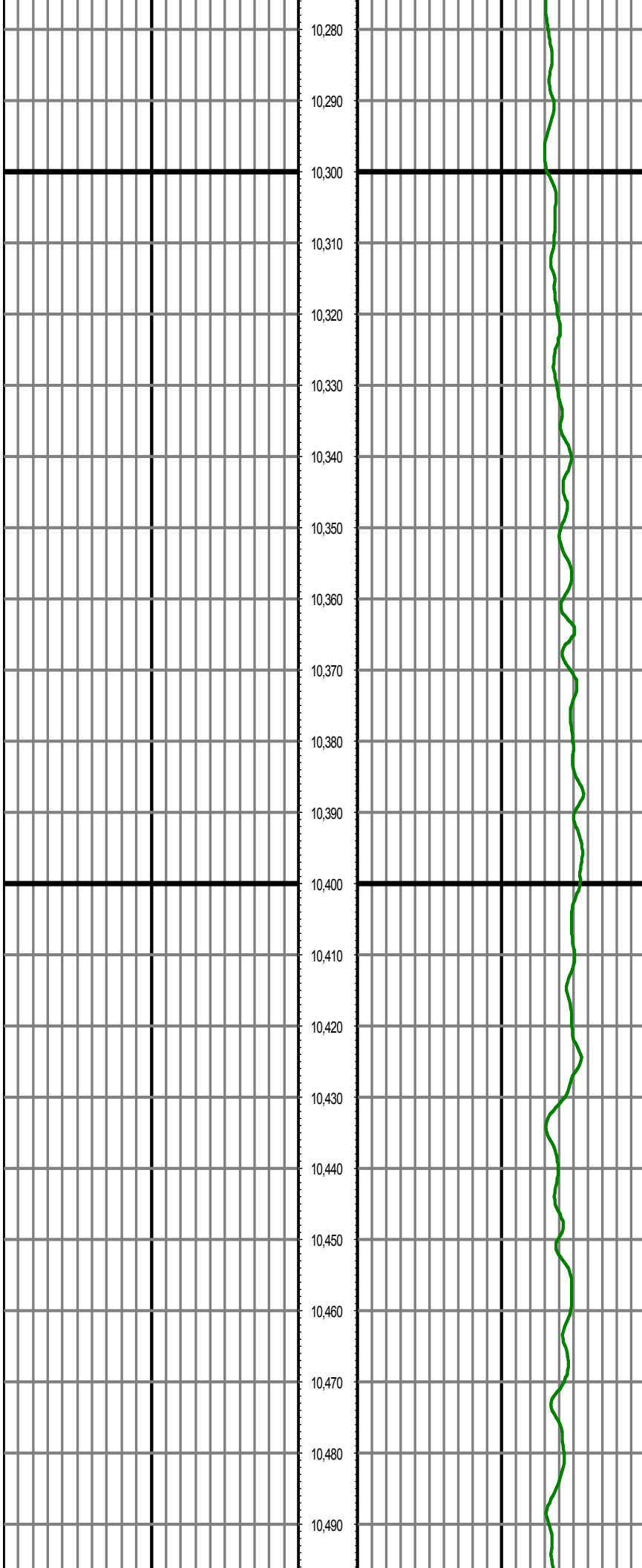
MD: 9917.00 INC: 89.70 AZ: 86.94 TVD: 7363.16 VS: 1668.

MD: 10012.00 INC: 90.40 AZ: 90.14 TVD: 7363.08 VS: 1763



MD: 10107.00 INC: 89.30 AZ: 91.64 TVD: 7363.32 VS: 1858

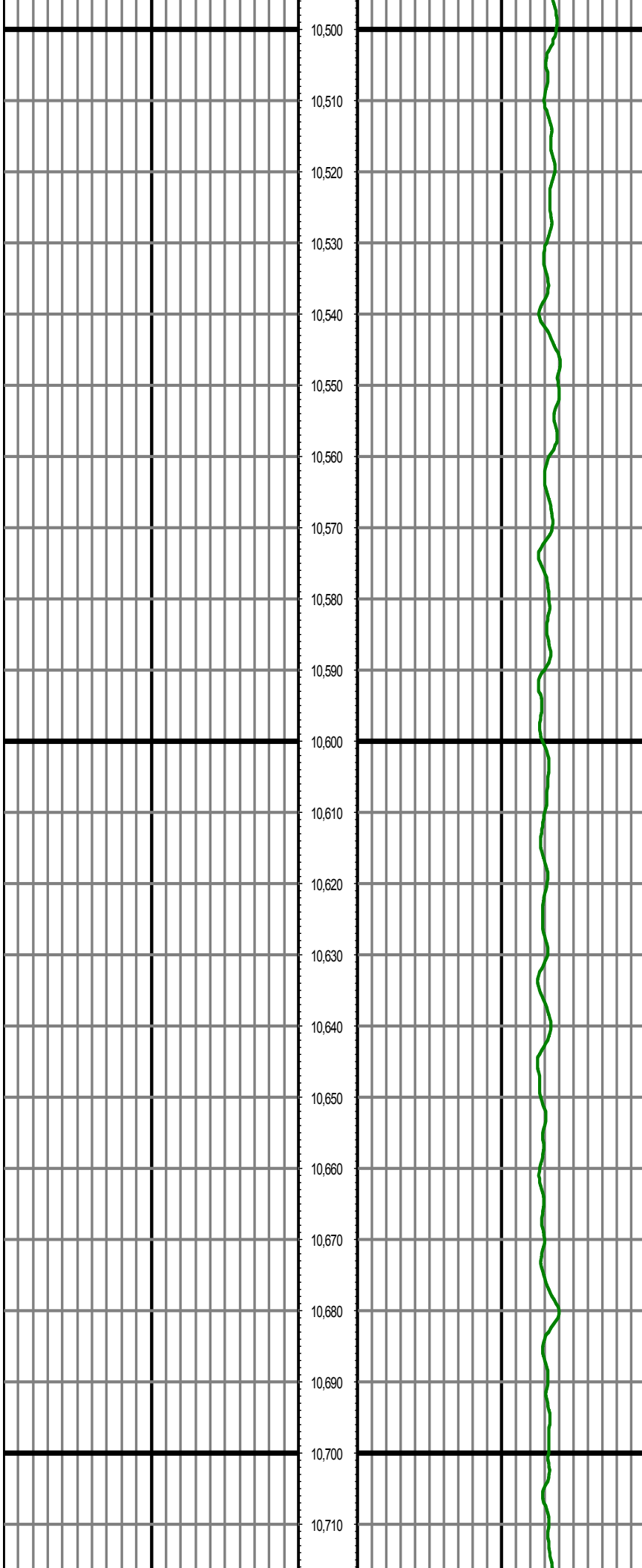
MD: 10202.00 INC: 89.80 AZ: 91.35 TVD: 7364.07 VS: 1953.47



MD: 10295.00 INC: 90.70 AZ: 90.54 TVD: 7363.67 VS: 2046

MD: 10388.00 INC: 89.20 AZ: 91.44 TVD: 7363.75 VS: 2139.42

MD: 10483.00 INC: 89.10 AZ: 90.54 TVD: 7365.15 VS: 2234.38



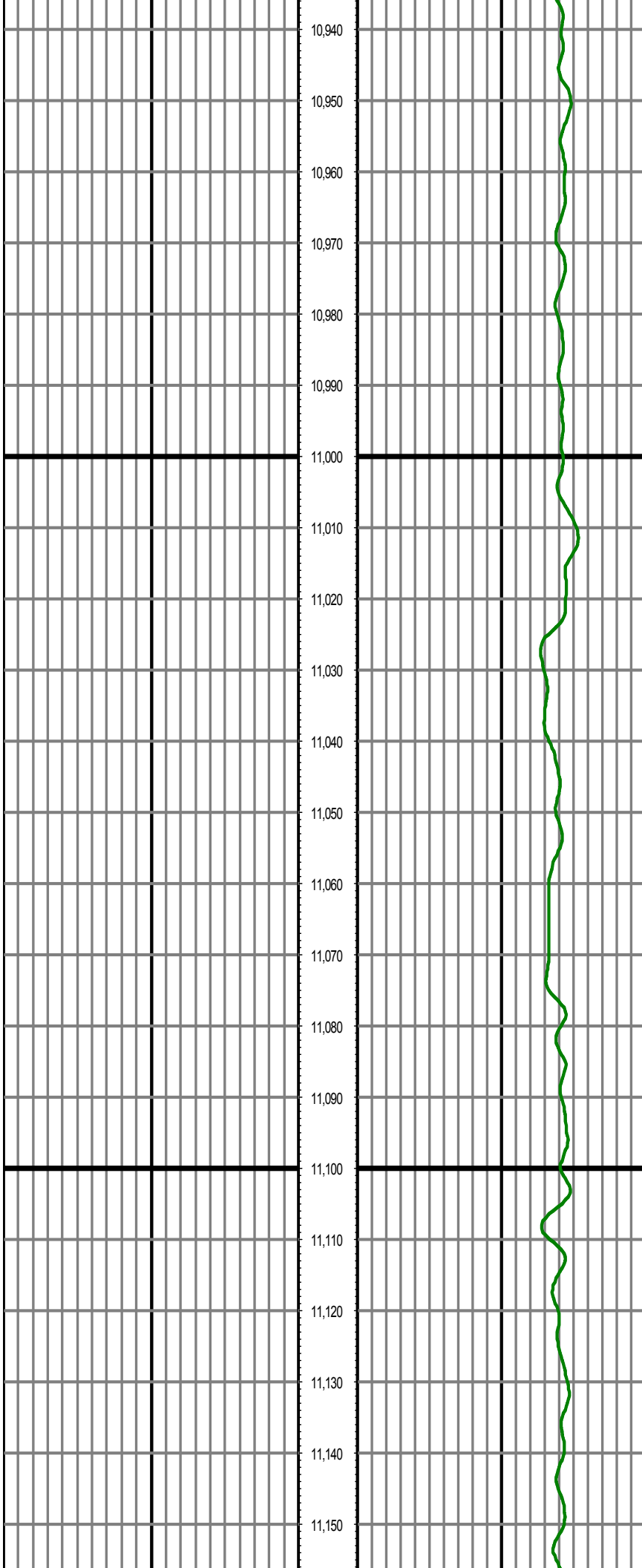
MD: 10579.00 INC: 89.20 AZ: 90.24 TVD: 7366.57 VS: 2330

MD: 10673.00 INC: 90.60 AZ: 89.24 TVD: 7366.73 VS: 2424.36



MD: 10768.00 INC: 88.10 AZ: 91.04 TVD: 7367.81 VS: 2519

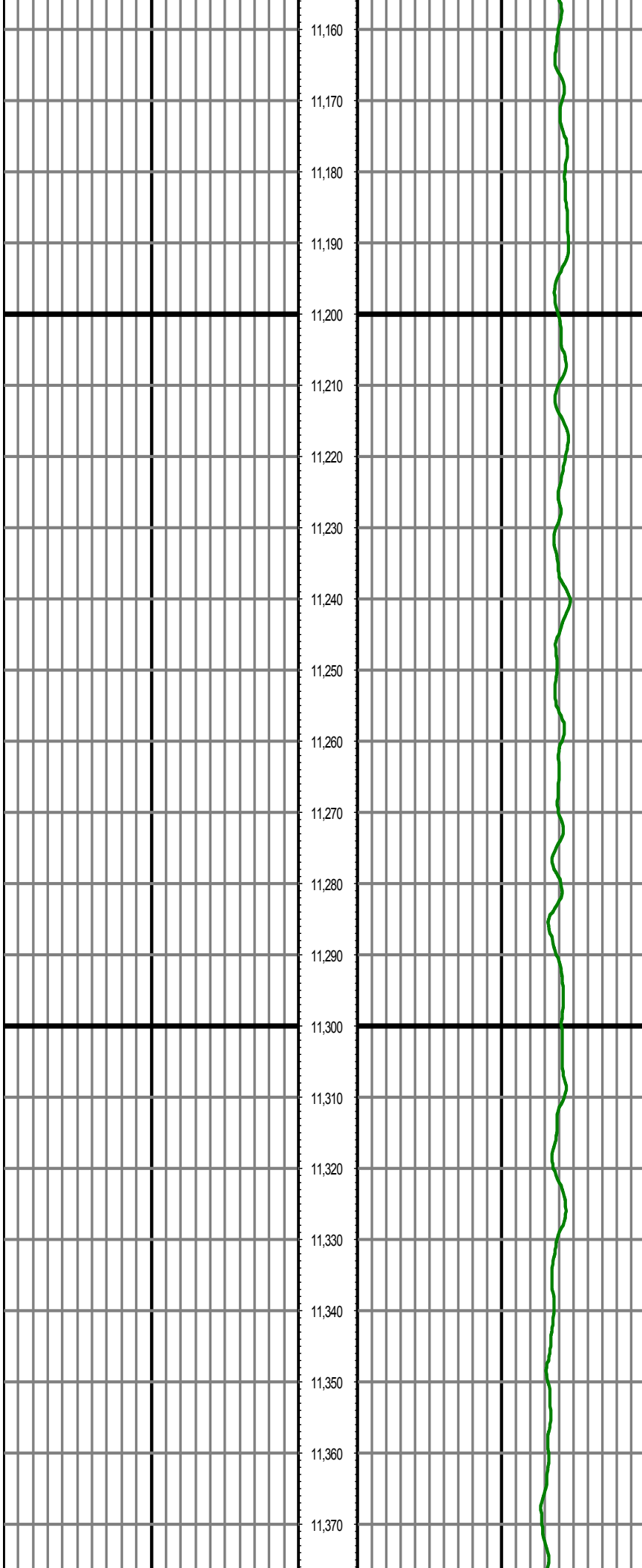
MD: 10862.00 INC: 88.60 AZ: 91.54 TVD: 7370.51 VS: 2613.27



MD: 10958.00 INC: 90.30 AZ: 90.54 TVD: 7371.43 VS: 2709

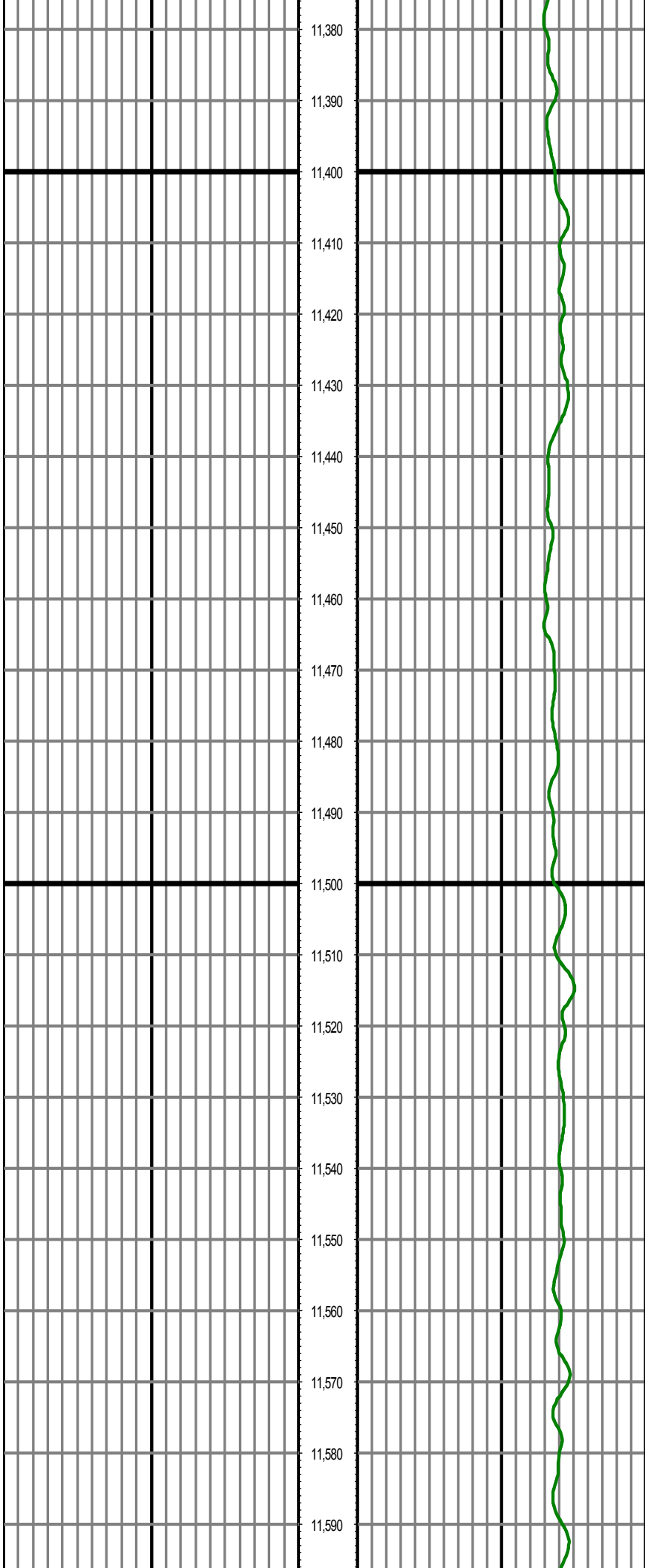
MD: 11053.00 INC: 88.40 AZ: 90.64 TVD: 7372.50 VS: 2804.21

MD: 11148.00 INC: 89.30 AZ: 90.44 TVD: 7374.41 VS: 2899.18



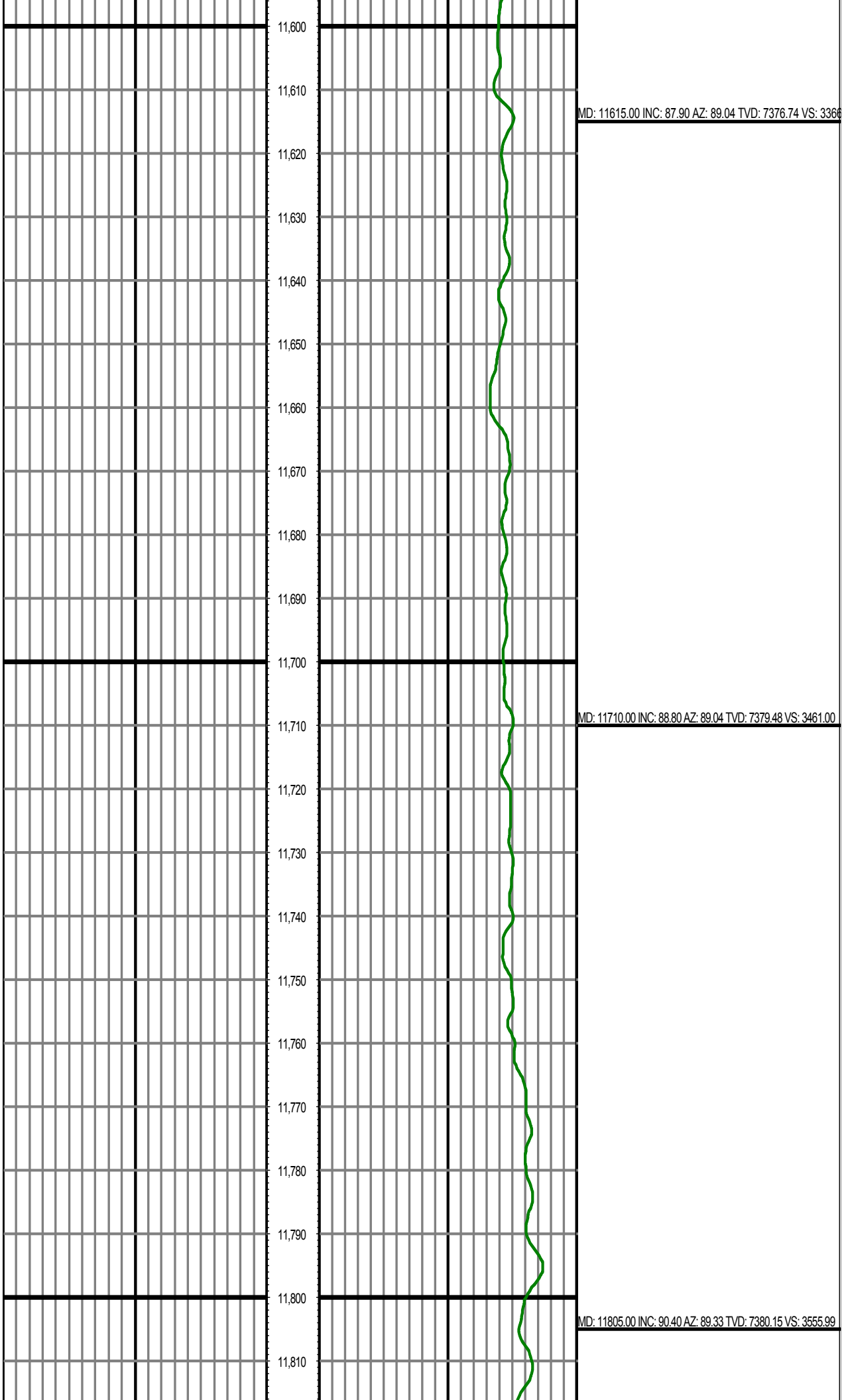
MD: 11241.00 INC: 90.50 AZ: 90.44 TVD: 7374.57 VS: 2992

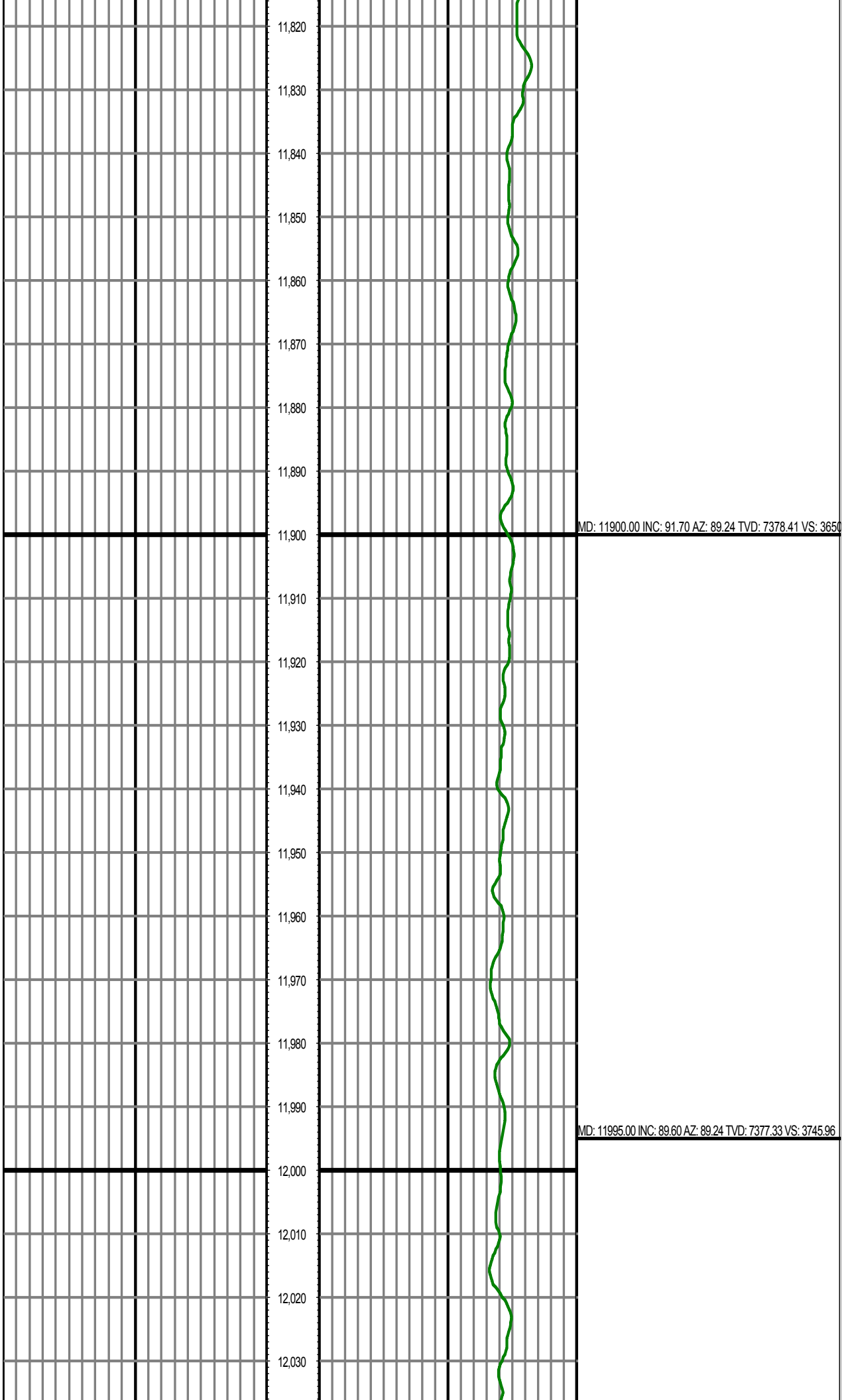
MD: 11333.00 INC: 91.60 AZ: 90.54 TVD: 7372.88 VS: 3084.14

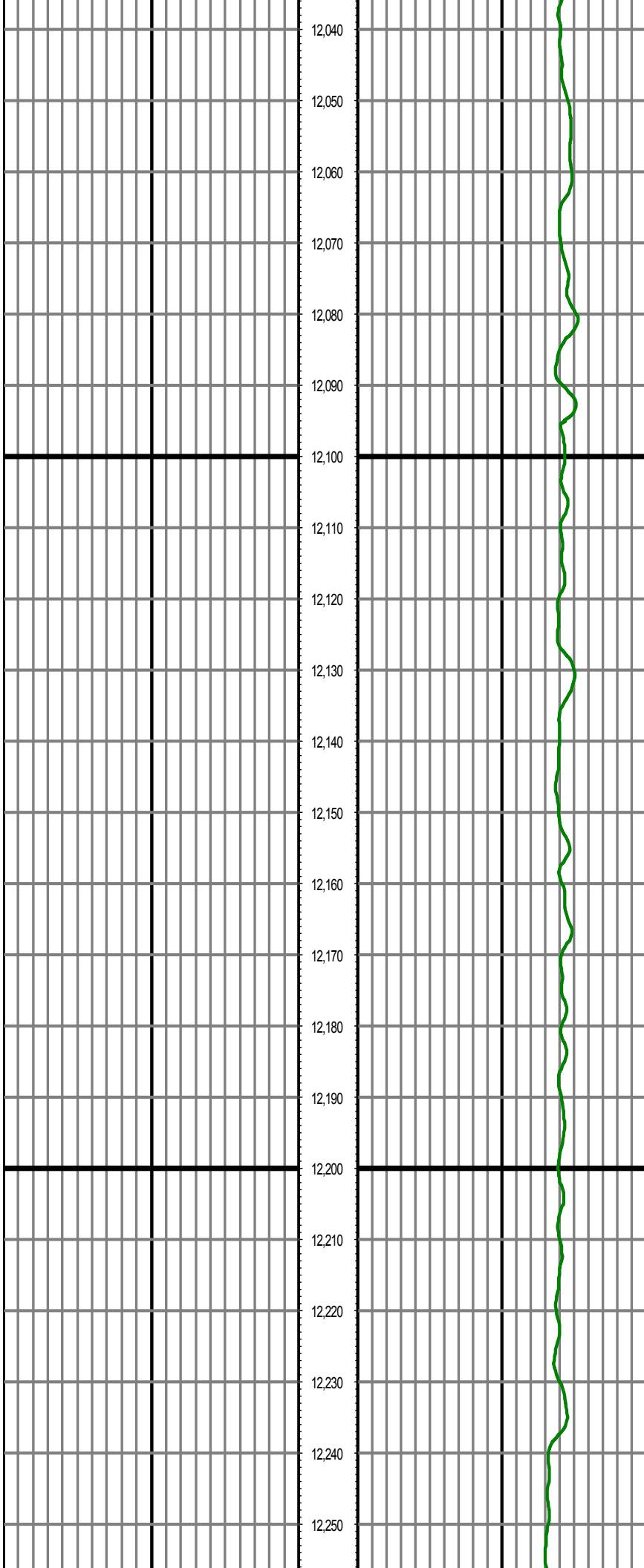


MD: 11427.00 INC: 88.70 AZ: 90.64 TVD: 7372.64 VS: 3178

MD: 11521.00 INC: 89.20 AZ: 91.04 TVD: 7374.36 VS: 3272.09

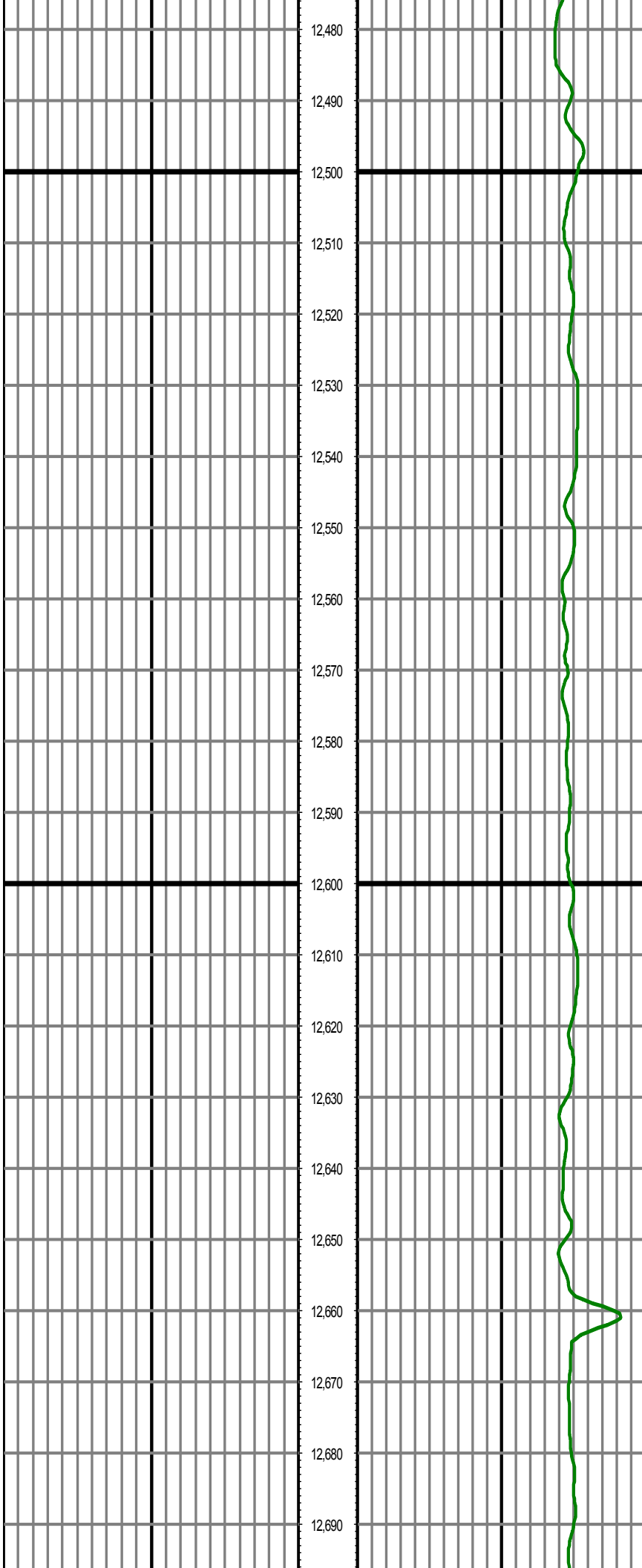






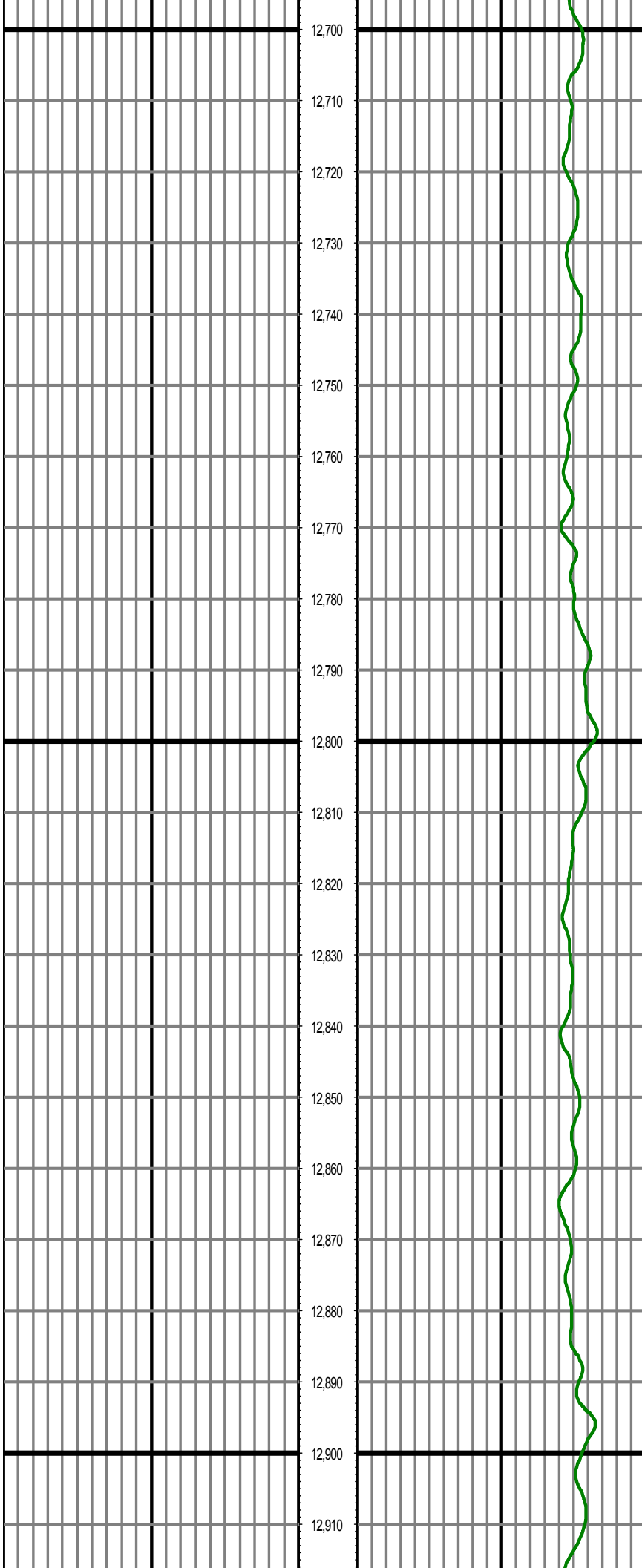
MD: 12090.00 INC: 89.90 AZ: 89.33 TVD: 7377.75 VS: 3840

MD: 12185.00 INC: 90.80 AZ: 89.14 TVD: 7377.18 VS: 3935.95



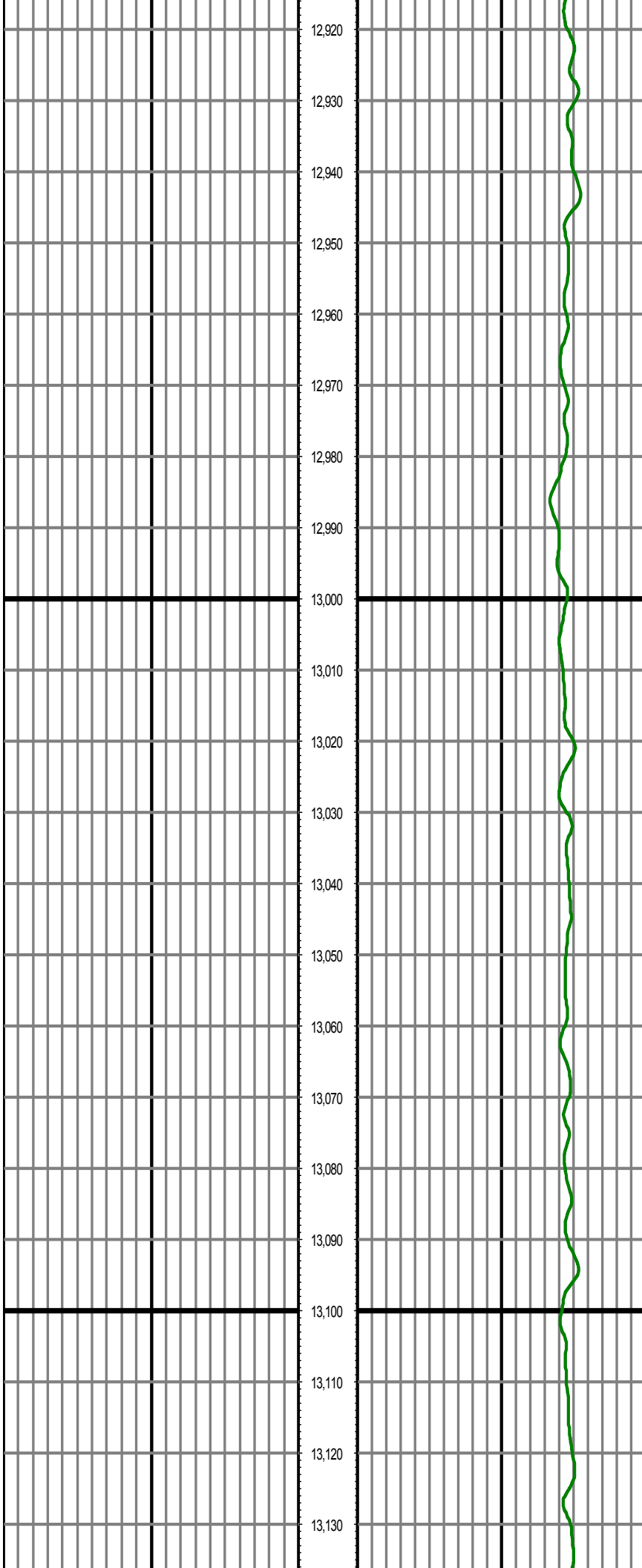
MD: 12566.00 INC: 91.20 AZ: 89.64 TVD: 7382.96 VS: 4316

MD: 12661.00 INC: 88.60 AZ: 89.54 TVD: 7383.13 VS: 4411.84



MD: 12756.00 INC: 89.40 AZ: 89.04 TVD: 7384.78 VS: 4506

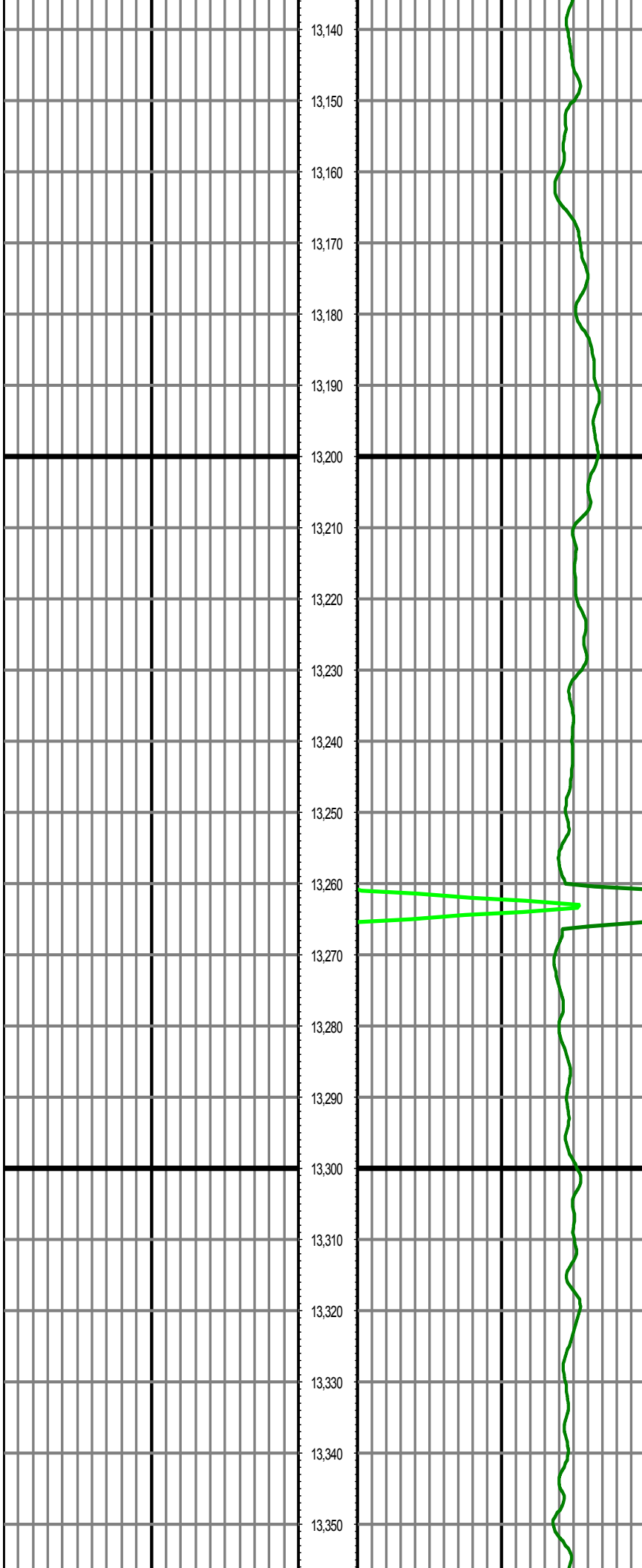
MD: 12851.00 INC: 89.30 AZ: 88.04 TVD: 7385.86 VS: 4601.80



MD: 12946.00 INC: 90.90 AZ: 87.34 TVD: 7385.69 VS: 4696

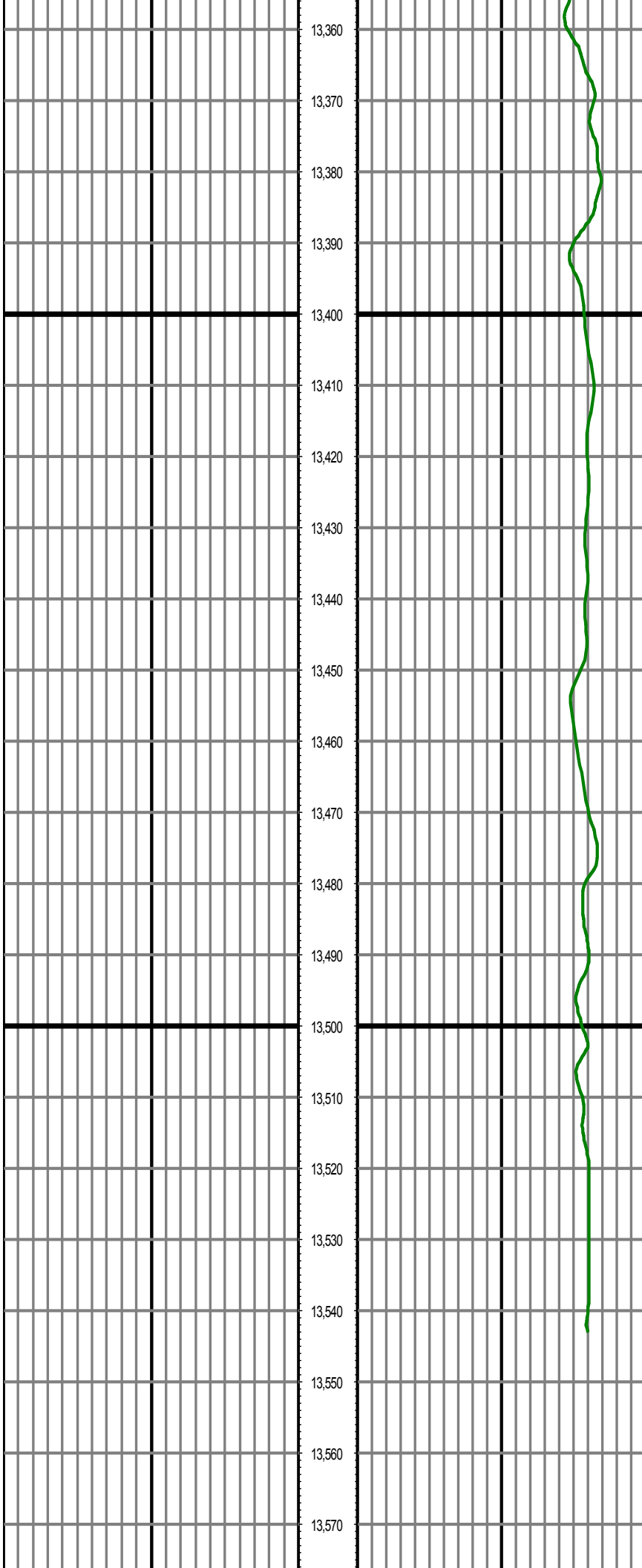
MD: 13041.00 INC: 88.90 AZ: 89.04 TVD: 7385.87 VS: 4791.69

MD: 13134.00 INC: 89.80 AZ: 89.33 TVD: 7386.93 VS: 4884.68



MD: 13229.00 INC: 90.60 AZ: 89.14 TVD: 7386.60 VS: 4979

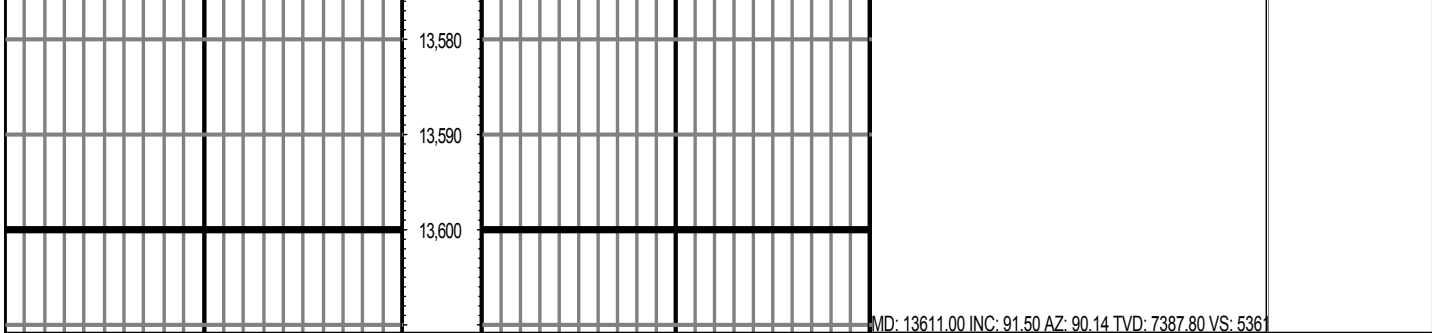
MD: 13325.00 INC: 87.99 AZ: 89.94 TVD: 7387.78 VS: 5075.66



MD: 13420.00 INC: 88.90 AZ: 89.74 TVD: 7390.35 VS: 5170

MD: 13514.00 INC: 91.20 AZ: 90.54 TVD: 7390.27 VS: 5264.62

MD: 13539.00 INC: 91.50 AZ: 90.14 TVD: 7389.68 VS: 5289.61



0.00	GR(API) on TVD	200.00	MD	0.00	GR(API) on MD	200.00	Surveys (MD/INC/AZ/TVD/VS)
200.00	2	400.00	FT	200.00	2	400.00	