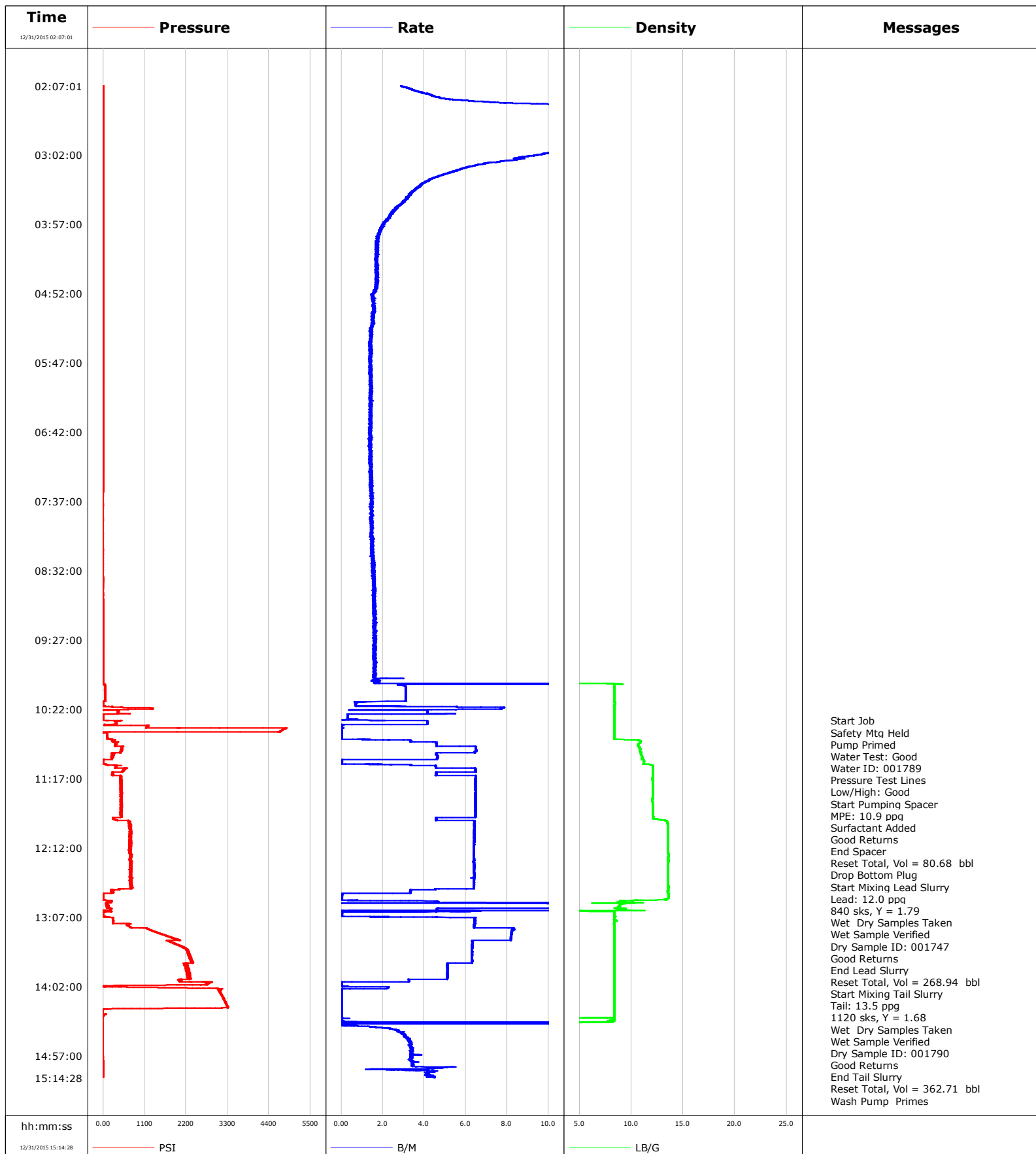


**Well** Whisper Rock 1C-25HZ  
**Field** Wattenberg  
**Engineer** Matlock/Baird  
**Country** United States

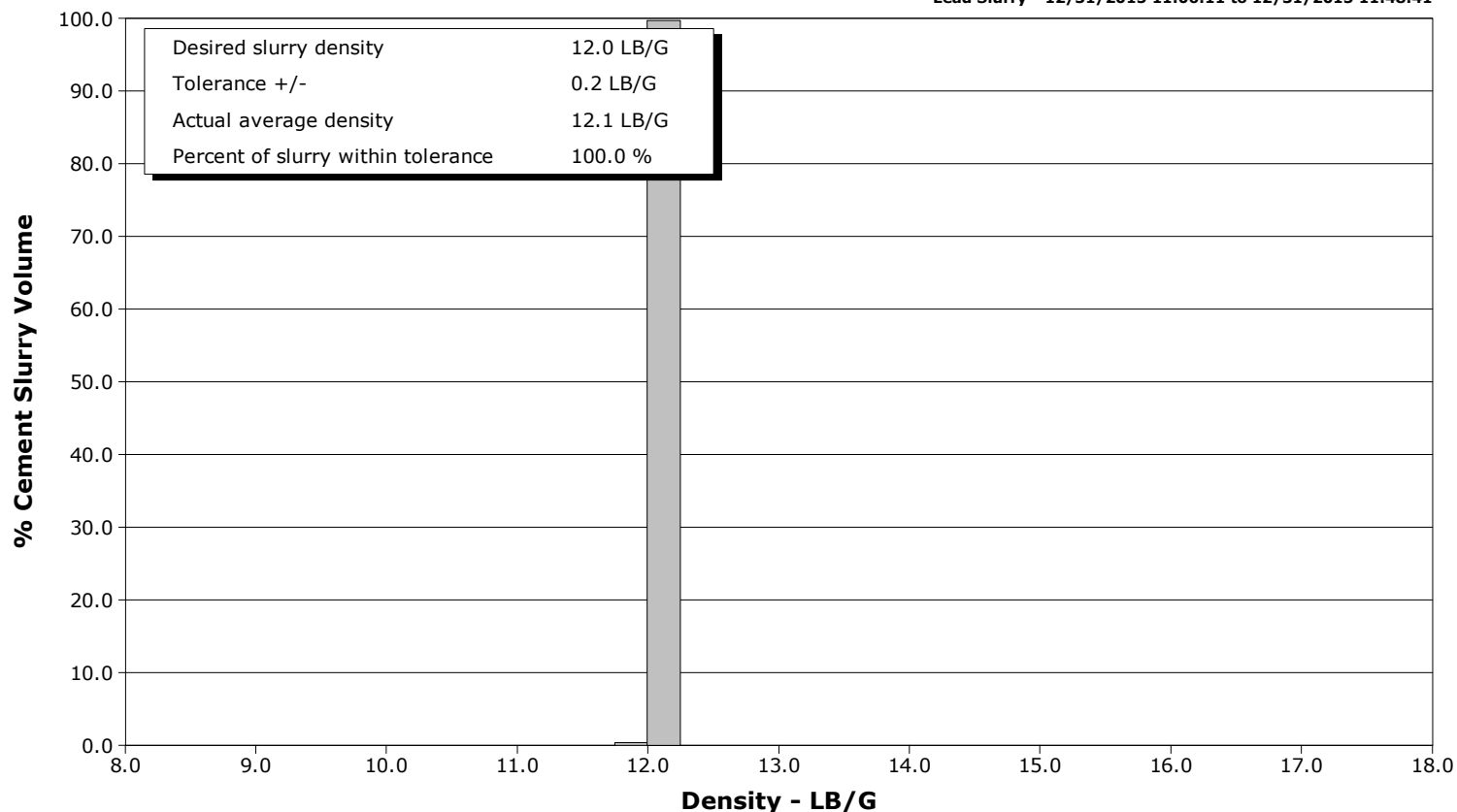
**Client** Anadarko  
**SIR No.** DAXH-00583  
**Job Type** Production  
**Job Date** 12-31-2015



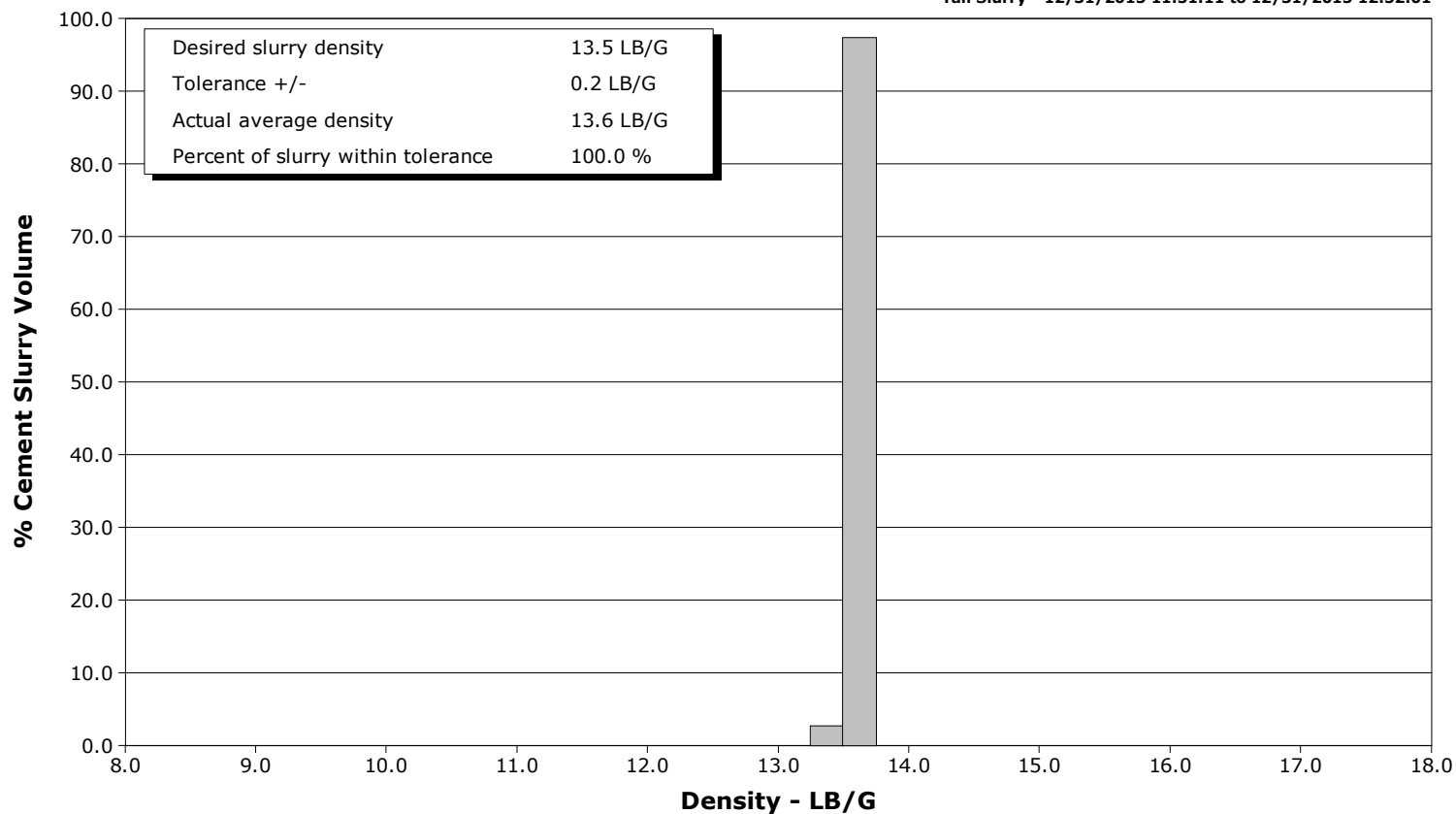
**Well** Whisper Rock 1C-25HZ  
**Field** Wattenberg  
**Engineer** Matlock/Baird  
**Country** United States

**Client** Anadarko  
**SIR No.** DAXH-00583  
**Job Type** Production  
**Job Date** 12-31-2015

**Lead Slurry - 12/31/2015 11:06:11 to 12/31/2015 11:48:41**



**Tail Slurry - 12/31/2015 11:51:11 to 12/31/2015 12:52:01**



# Cementing Service Report

					Customer Anadarko			Job Number DAXH-00583	
Well Whisper Rock 1C-25HZ			Location (legal)			Schlumberger Location Cheyenne		Job Start Dec/31/2015	
Field Wattenberg		Formation Name/Type		Deviation deg		Bit Size 8.5 in		Well MD 13786.0 ft	
County Weld		State/Province CO		BHP psi		BHST 237 degF		BHCT 232 degF	
Well Master 0631629526		API/UWI 05123413010000						Pore Press. Gradient lb/gal	
Rig Name Precision 462		Drilled For Gas		Service Via Land		Casing/ Liner			
						Depth, ft		Size, in	
						Weight, lb/ft		Grade	
Offshore Zone		Well Class New		Well Type Development		13786.0		5.5	
						0.0		0.0	
Drilling Fluid Type		Max. Density lb/gal		Plastic Viscosity cP		Tubing/Drill Pipe			
						T/D		Depth, ft	
						Size, in		Weight, lb/ft	
Service Line Cementing		Job Type Production						Grade	
Max. Allowed Tub. Press psi		Max. Allowed Ann. Press psi		WH Connection Double Cement head		Perforations/Open Hole			
						Top, ft		Bottom, ft	
						shot/ft		No. of Shots	
								Total Interval ft	
						ft		ft	
						ft		ft	
						ft		ft	
						Treat Down Casing		Displacement 318.0 bbl	
						Packer Type		Packer Depth ft	
						Tubing Vol. bbl		Casing Vol. bbl	
						Annular Vol. bbl		Openhole Vol. bbl	
Casing/Tubing Secured <input checked="" type="checkbox"/>		1 Hole Vol. Circulated prior to Cement <input checked="" type="checkbox"/>				Casing Tools		Squeeze Job	
Lift Pressure psi						Shoe Type Float		Squeeze Type	
Pipe Rotated <input type="checkbox"/>		Pipe Reciprocated <input type="checkbox"/>				Shoe Depth 13786.0 ft		Tool Type	
No. Centralizers		Top Plugs 1		Bottom Plugs 1		Stage Tool Type		Tool Depth ft	
Cement Head Type Double						Stage Tool Depth ft		Tail Pipe Size in	
Job Scheduled For Dec/31/2015 00:00		Arrived on Location Dec/31/2015 00:00		Leave Location Dec/31/2015 16:30		Collar Type Float		Tail Pipe Depth ft	
						Collar Depth 13693.0 ft		Sqz. Total Vol. bbl	
Date	Time 24-hr clock	Treating Pressure PSI	Flow Rate B/M	Density LB/G	Volume BBL	Solid Fraction NULL	Message		
12/31/2015	10:29:35	1	0.3	8.36	1586.9	0	Remark		
12/31/2015	10:30:25	4	0.1	8.37	1587.2	0			
12/31/2015	10:31:00	190	1.4	8.36	0.5	0	Start Job		
12/31/2015	10:31:15	437	4.2	8.37	1.3	0			
12/31/2015	10:32:00	338	4.2	8.36	4.4	0	Safety Mtg Held		
12/31/2015	10:32:05	336	4.2	8.36	4.8	0			
12/31/2015	10:32:55	350	4.2	8.36	8.2	0			
12/31/2015	10:33:00	343	4.2	8.36	8.6	0	Pump Primed		
12/31/2015	10:33:45	345	4.1	8.36	11.7	0			
12/31/2015	10:34:00	47	0.5	8.37	12.6	0	Water Test: Good		
12/31/2015	10:34:30	31	0.0	8.37	12.6	0	Water ID: 001789		
12/31/2015	10:34:35	31	0.0	8.36	12.6	0			
12/31/2015	10:35:00	1203	0.0	8.37	12.6	0	Pressure Test Lines		
12/31/2015	10:35:25	1186	0.0	8.36	12.7	0			
12/31/2015	10:36:15	1167	0.0	8.36	12.7	0			
12/31/2015	10:37:05	4853	0.0	8.36	12.7	0			
12/31/2015	10:37:55	4780	0.0	8.36	12.7	0			
12/31/2015	10:38:45	4734	0.0	8.37	12.7	0			
12/31/2015	10:39:35	4701	0.0	8.37	12.7	0			
12/31/2015	10:40:00	4684	0.0	8.37	12.7	0	Low/High: Good		
12/31/2015	10:40:25	-7	0.0	8.37	12.7	0			

Well			Field		Job Start		Customer		Job Number
Whisper Rock 1C-25HZ			Wattenberg		Dec/31/2015		Anadarko		DAXH-00583
Date	Time 24-hr clock	Treating Pressure PSI	Flow Rate B/M	Density LB/G	Volume BBL	Solid Fraction NULL	Message		
12/31/2015	10:42:05	95	0.0	8.36	0.0	0			
12/31/2015	10:42:55	110	0.0	8.36	0.0	0			
12/31/2015	10:43:45	114	0.0	8.36	0.1	0			
12/31/2015	10:44:35	108	0.0	8.37	0.1	0			
12/31/2015	10:45:25	113	0.0	8.37	0.1	0			
12/31/2015	10:46:00	250	0.8	8.63	0.3	10	Start Pumping Spacer		
12/31/2015	10:46:15	239	2.3	10.66	0.6	11			
12/31/2015	10:46:50	266	3.3	10.79	2.4	18	MPE: 10.9 ppg		
12/31/2015	10:47:05	292	3.4	10.86	3.3	19			
12/31/2015	10:47:55	305	3.3	10.90	6.0	23			
12/31/2015	10:48:00	383	4.4	10.90	6.4	24	Surfactant Added		
12/31/2015	10:48:45	347	4.6	10.81	9.8	26			
12/31/2015	10:49:35	326	4.6	10.69	13.6	27			
12/31/2015	10:50:25	315	4.6	10.61	17.4	28			
12/31/2015	10:51:15	322	4.6	10.69	21.3	31			
12/31/2015	10:52:05	487	6.5	10.76	26.2	31			
12/31/2015	10:52:55	511	6.5	10.81	31.6	31			
12/31/2015	10:53:45	502	6.5	10.88	37.0	32			
12/31/2015	10:54:35	486	6.5	10.82	42.4	31			
12/31/2015	10:55:25	474	6.5	10.82	47.9	32			
12/31/2015	10:56:15	448	6.4	10.94	53.2	30			
12/31/2015	10:57:05	275	4.6	10.94	57.8	27			
12/31/2015	10:57:55	257	4.6	10.97	61.6	25			
12/31/2015	10:58:45	276	4.6	10.99	65.4	24			
12/31/2015	10:59:00	267	4.6	11.00	66.6	24	Good Returns		
12/31/2015	10:59:35	267	4.7	11.01	69.3	23			
12/31/2015	11:00:25	252	4.6	11.04	73.2	23			
12/31/2015	11:01:15	233	4.6	11.00	77.0	14			
12/31/2015	11:02:00	49	4.1	10.99	80.5	14	End Spacer		
12/31/2015	11:02:05	18	0.4	11.14	80.7	14			
12/31/2015	11:02:08	15	0.1	11.16	0.0	0	Reset Total, Vol = 80.68 bbl		
12/31/2015	11:02:55	7	0.0	11.22	0.0	0			
12/31/2015	11:03:00	2	0.0	11.22	0.0	0	Drop Bottom Plug		
12/31/2015	11:03:45	-5	0.0	11.21	0.1	0			
12/31/2015	11:04:35	-5	0.0	11.20	0.1	0			
12/31/2015	11:05:25	-3	0.0	11.17	0.1	0			
12/31/2015	11:06:11	117	3.4	11.95	1.4	10	Start Mixing Lead Slurry		
12/31/2015	11:06:15	111	3.4	11.97	1.7	10			
12/31/2015	11:07:05	348	4.6	12.07	5.1	16			
12/31/2015	11:07:55	340	4.6	12.08	8.9	19			
12/31/2015	11:08:00	331	4.6	12.08	9.2	20	Lead: 12.0 ppg		
12/31/2015	11:08:45	569	6.5	12.11	12.9	22			
12/31/2015	11:09:00	575	6.5	12.11	14.5	22	840 sks, Y = 1.79		
12/31/2015	11:09:35	592	6.5	12.10	18.2	23			
12/31/2015	11:10:00	544	6.5	12.09	20.9	23	Wet Dry Samples Taken		
12/31/2015	11:10:25	542	6.5	12.09	23.6	24			
12/31/2015	11:11:15	505	6.5	12.08	29.0	25			
12/31/2015	11:12:00	252	4.6	12.05	33.6	25	Wet Sample Verified		
12/31/2015	11:12:05	247	4.6	12.05	33.9	25			
12/31/2015	11:12:55	251	4.6	12.07	37.7	25			
12/31/2015	11:13:00	267	4.6	12.08	38.1	25	Dry Sample ID: 001747		
12/31/2015	11:13:45	247	4.6	12.06	41.6	24			
12/31/2015	11:14:35	467	6.5	12.08	45.5	24			
12/31/2015	11:15:25	447	6.5	12.07	50.9	24			

Well			Field		Job Start		Customer		Job Number
Whisper Rock 1C-25HZ			Wattenberg		Dec/31/2015		Anadarko		DAXH-00583
Date	Time 24-hr clock	Treating Pressure PSI	Flow Rate B/M	Density LB/G	Volume BBL	Solid Fraction NULL	Message		
12/31/2015	11:17:05	480	6.5	12.03	61.7	24			
12/31/2015	11:17:55	493	6.5	12.03	67.1	24			
12/31/2015	11:18:45	469	6.5	12.04	72.5	24			
12/31/2015	11:19:35	466	6.5	12.05	77.8	25			
12/31/2015	11:20:25	492	6.5	12.05	83.2	25			
12/31/2015	11:21:15	462	6.5	12.05	88.6	25			
12/31/2015	11:22:05	483	6.5	12.06	94.0	25			
12/31/2015	11:22:55	489	6.5	12.06	99.4	25			
12/31/2015	11:23:45	490	6.5	12.06	104.8	25			
12/31/2015	11:24:35	476	6.5	12.07	110.2	26			
12/31/2015	11:25:25	464	6.5	12.06	115.6	26			
12/31/2015	11:26:15	497	6.5	12.06	120.9	25			
12/31/2015	11:27:05	488	6.5	12.05	126.3	25			
12/31/2015	11:27:55	474	6.5	12.07	131.7	25			
12/31/2015	11:28:45	490	6.5	12.07	137.1	25			
12/31/2015	11:29:35	465	6.5	12.06	142.5	25			
12/31/2015	11:30:00	480	6.5	12.06	145.2	25	Good Returns		
12/31/2015	11:30:25	483	6.5	12.05	147.9	25			
12/31/2015	11:31:15	478	6.5	12.05	153.3	25			
12/31/2015	11:32:05	481	6.5	12.05	158.7	25			
12/31/2015	11:32:55	481	6.5	12.02	164.0	25			
12/31/2015	11:33:45	492	6.5	12.03	169.4	24			
12/31/2015	11:34:35	472	6.5	12.03	174.8	24			
12/31/2015	11:35:25	478	6.5	12.03	180.2	24			
12/31/2015	11:36:15	470	6.5	12.04	185.6	24			
12/31/2015	11:37:05	487	6.5	12.04	191.0	25			
12/31/2015	11:37:55	476	6.5	12.05	196.3	25			
12/31/2015	11:38:45	486	6.5	12.05	201.7	25			
12/31/2015	11:39:35	467	6.5	12.05	207.1	25			
12/31/2015	11:40:25	463	6.5	12.05	212.5	25			
12/31/2015	11:41:15	478	6.5	12.05	217.9	25			
12/31/2015	11:42:05	486	6.5	12.07	223.3	25			
12/31/2015	11:42:55	480	6.5	12.06	228.7	25			
12/31/2015	11:43:45	467	6.5	12.07	234.0	26			
12/31/2015	11:44:35	481	6.5	12.08	239.4	26			
12/31/2015	11:45:25	461	6.5	12.08	244.8	26			
12/31/2015	11:46:15	467	6.5	12.13	250.2	26			
12/31/2015	11:47:05	478	6.5	12.12	255.6	26			
12/31/2015	11:47:55	260	4.6	12.10	260.9	27			
12/31/2015	11:48:41	264	4.6	12.10	264.4	27	End Lead Slurry		
12/31/2015	11:48:45	264	4.6	12.10	264.7	27			
12/31/2015	11:49:35	314	4.6	12.75	268.5	29			
12/31/2015	11:49:40	309	4.6	12.81	268.9	29	Reset Total, Vol = 268.94 bbl		
12/31/2015	11:50:25	668	5.0	13.28	3.3	31			
12/31/2015	11:51:11	684	6.4	13.46	8.2	33	Start Mixing Tail Slurry		
12/31/2015	11:51:15	711	6.4	13.46	8.6	33			
12/31/2015	11:52:05	680	6.4	13.47	14.0	33			
12/31/2015	11:52:55	730	6.4	13.50	19.3	34			
12/31/2015	11:53:45	702	6.4	13.55	24.7	33			
12/31/2015	11:54:00	741	6.4	13.53	26.3	33	Tail: 13.5 ppg		
12/31/2015	11:54:35	716	6.4	13.54	30.0	32			
12/31/2015	11:55:00	710	6.4	13.53	32.7	32	1120 sks, Y = 1.68		
12/31/2015	11:55:25	691	6.4	13.53	35.4	33			
12/31/2015	11:56:00	727	6.4	13.55	39.1	33	Wet Dry Samples Taken		

Well Whisper Rock 1C-25HZ			Field Wattenberg		Job Start Dec/31/2015	Customer Anadarko		Job Number DAXH-00583
Date	Time 24-hr clock	Treating Pressure PSI	Flow Rate B/M	Density LB/G	Volume BBL	Solid Fraction NULL	Message	
12/31/2015	11:57:00	735	6.4	13.56	45.6	35	Wet Sample Verified	
12/31/2015	11:57:05	733	6.4	13.56	46.1	35		
12/31/2015	11:57:55	738	6.4	13.56	51.4	35		
12/31/2015	11:58:00	727	6.4	13.56	51.9	35	Dry Sample ID: 001790	
12/31/2015	11:58:45	738	6.4	13.56	56.8	35		
12/31/2015	11:59:35	707	6.4	13.56	62.1	35		
12/31/2015	12:00:25	740	6.4	13.56	67.5	35		
12/31/2015	12:01:15	716	6.4	13.56	72.8	36		
12/31/2015	12:02:05	716	6.4	13.56	78.2	36		
12/31/2015	12:02:55	704	6.4	13.55	83.5	35		
12/31/2015	12:03:45	730	6.4	13.55	88.9	35		
12/31/2015	12:04:35	723	6.4	13.56	94.2	35		
12/31/2015	12:05:25	725	6.4	13.55	99.6	35		
12/31/2015	12:06:15	720	6.4	13.56	104.9	35		
12/31/2015	12:07:05	733	6.4	13.56	110.3	35		
12/31/2015	12:07:55	733	6.4	13.56	115.6	35		
12/31/2015	12:08:45	716	6.4	13.56	120.9	35		
12/31/2015	12:09:35	708	6.4	13.56	126.3	35		
12/31/2015	12:10:25	740	6.4	13.56	131.6	35		
12/31/2015	12:11:15	720	6.4	13.56	137.0	35		
12/31/2015	12:12:05	716	6.4	13.55	142.3	35		
12/31/2015	12:12:55	718	6.4	13.53	147.6	35		
12/31/2015	12:13:45	713	6.4	13.53	153.0	34		
12/31/2015	12:14:35	728	6.4	13.54	158.3	34		
12/31/2015	12:15:25	700	6.4	13.54	163.6	35		
12/31/2015	12:16:15	736	6.4	13.54	168.9	35		
12/31/2015	12:17:05	701	6.4	13.57	174.3	36		
12/31/2015	12:17:55	755	6.4	13.58	179.6	36		
12/31/2015	12:18:45	740	6.4	13.57	184.9	36		
12/31/2015	12:19:35	735	6.4	13.56	190.3	36		
12/31/2015	12:20:25	738	6.4	13.55	195.6	36		
12/31/2015	12:21:15	734	6.4	13.59	200.9	35		
12/31/2015	12:22:05	726	6.4	13.54	206.3	33		
12/31/2015	12:22:55	750	6.4	13.59	211.6	34		
12/31/2015	12:23:45	748	6.4	13.55	216.9	34		
12/31/2015	12:24:35	750	6.4	13.55	222.2	34		
12/31/2015	12:25:25	743	6.4	13.54	227.6	34		
12/31/2015	12:26:15	752	6.4	13.54	232.9	35		
12/31/2015	12:27:05	737	6.4	13.55	238.2	35		
12/31/2015	12:27:55	749	6.4	13.55	243.6	35		
12/31/2015	12:28:45	728	6.4	13.55	248.9	35		
12/31/2015	12:29:35	719	6.4	13.55	254.3	35		
12/31/2015	12:30:00	725	6.4	13.55	256.9	35	Good Returns	
12/31/2015	12:30:25	738	6.4	13.56	259.6	35		
12/31/2015	12:31:15	710	6.4	13.56	264.9	36		
12/31/2015	12:32:05	753	6.4	13.56	270.3	35		
12/31/2015	12:32:55	732	6.4	13.56	275.6	35		
12/31/2015	12:33:45	719	6.4	13.56	281.0	35		
12/31/2015	12:34:35	720	6.4	13.56	286.3	35		
12/31/2015	12:35:25	705	6.4	13.56	291.7	35		
12/31/2015	12:36:15	740	6.4	13.56	297.0	36		
12/31/2015	12:37:05	728	6.4	13.56	302.3	36		
12/31/2015	12:37:55	748	6.4	13.55	307.7	36		
12/31/2015	12:38:45	735	6.4	13.55	313.0	36		

Well Whisper Rock 1C-25HZ			Field Wattenberg		Job Start Dec/31/2015	Customer Anadarko		Job Number DAXH-00583
Date	Time 24-hr clock	Treating Pressure PSI	Flow Rate B/M	Density LB/G	Volume BBL	Solid Fraction NULL	Message	
12/31/2015	12:40:25	747	6.4	13.55	323.7	35		
12/31/2015	12:41:15	727	6.4	13.55	329.0	35		
12/31/2015	12:42:05	767	6.4	13.56	334.3	35		
12/31/2015	12:42:55	738	6.4	13.56	339.7	34		
12/31/2015	12:43:45	777	6.4	13.58	345.0	35		
12/31/2015	12:44:35	447	4.5	13.54	350.1	33		
12/31/2015	12:45:25	210	3.4	13.56	353.8	27		
12/31/2015	12:46:15	272	3.4	13.56	356.6	35		
12/31/2015	12:47:05	235	3.3	13.52	359.4	33		
12/31/2015	12:47:55	247	3.3	13.53	362.1	67		
12/31/2015	12:48:45	-11	0.1	13.60	362.6	0		
12/31/2015	12:49:35	-3	0.0	13.59	362.6	0		
12/31/2015	12:50:25	-5	0.0	13.59	362.6	0		
12/31/2015	12:51:15	-9	0.0	13.58	362.7	0		
12/31/2015	12:52:01	-4	0.1	13.57	362.7	0	End Tail Slurry	
12/31/2015	12:52:05	-5	0.0	13.54	362.7	0		
12/31/2015	12:52:55	-5	0.0	13.23	362.7	0		
12/31/2015	12:53:27	45	0.2	11.81	362.7	63	Reset Total, Vol = 362.71 bbl	
12/31/2015	12:53:45	41	0.8	10.37	0.2	64		
12/31/2015	12:54:35	203	4.6	9.05	2.9	26		
12/31/2015	12:55:25	173	7.0	8.81	6.8	17		
12/31/2015	12:56:15	118	10.3	9.28	17.6	23		
12/31/2015	12:57:05	99	10.6	8.90	26.4	24		
12/31/2015	12:57:55	135	10.7	8.87	35.4	27		
12/31/2015	12:58:45	85	10.5	8.77	44.2	11		
12/31/2015	12:59:00	115	10.8	8.75	46.9	28	Wash Pump Primes	
12/31/2015	12:59:35	117	10.6	8.84	53.1	11		
12/31/2015	13:00:25	200	4.6	9.32	58.4	72		
12/31/2015	13:01:15	196	4.6	8.73	62.3	72		
12/31/2015	13:02:05	-7	1.3	4.43	65.3	72		
12/31/2015	13:02:55	-7	0.3	8.36	67.8	0		
12/31/2015	13:03:00	-10	0.0	8.36	67.8	0	Drop Top Plug	
12/31/2015	13:03:45	-6	0.0	8.36	0.0	0		
12/31/2015	13:04:35	-8	0.0	8.35	0.0	0		
12/31/2015	13:05:25	-6	0.0	8.36	0.1	0		
12/31/2015	13:06:15	-6	0.0	8.36	0.1	0		
12/31/2015	13:07:00	148	4.5	8.36	0.9	0	Start Displacement	
12/31/2015	13:07:05	134	4.6	8.36	1.3	0		
12/31/2015	13:07:55	258	6.4	8.36	6.4	0		
12/31/2015	13:08:45	261	6.5	8.35	11.8	0		
12/31/2015	13:09:35	264	6.4	8.47	17.2	0		
12/31/2015	13:10:25	258	6.4	8.39	22.5	0		
12/31/2015	13:11:15	254	6.4	8.36	27.9	0		
12/31/2015	13:12:05	314	6.5	8.34	33.3	0		
12/31/2015	13:12:55	637	6.4	8.38	38.6	0		
12/31/2015	13:13:45	658	6.4	8.39	44.0	0		
12/31/2015	13:14:35	701	6.4	8.36	49.3	0		
12/31/2015	13:15:00	729	6.4	8.37	52.0	0	Good Returns	
12/31/2015	13:15:25	740	6.4	8.37	54.7	0		
12/31/2015	13:16:15	1173	8.2	8.37	61.3	0		
12/31/2015	13:17:05	1237	8.3	8.37	68.2	0		
12/31/2015	13:17:55	1308	8.2	8.37	75.0	0		
12/31/2015	13:18:45	1377	8.2	8.37	81.9	0		
12/31/2015	13:19:35	1470	8.2	8.37	88.7	0		

Well Whisper Rock 1C-25HZ			Field Wattenberg		Job Start Dec/31/2015	Customer Anadarko		Job Number DAXH-00583
Date	Time 24-hr clock	Treating Pressure PSI	Flow Rate B/M	Density LB/G	Volume BBL	Solid Fraction NULL	Message	
12/31/2015	13:21:15	1637	8.2	8.37	102.4	0		
12/31/2015	13:22:05	1701	8.2	8.37	109.3	0		
12/31/2015	13:22:55	1779	8.2	8.37	116.1	0		
12/31/2015	13:23:45	1870	8.2	8.37	122.9	0		
12/31/2015	13:24:35	1968	8.2	8.37	129.7	0		
12/31/2015	13:25:25	2042	8.2	8.37	136.5	0		
12/31/2015	13:26:15	1749	6.3	8.37	141.9	0		
12/31/2015	13:27:05	1838	6.3	8.37	147.2	0		
12/31/2015	13:27:55	1878	6.3	8.37	152.5	0		
12/31/2015	13:28:45	1962	6.3	8.37	157.7	0		
12/31/2015	13:29:35	2035	6.3	8.36	163.0	0		
12/31/2015	13:30:25	2082	6.3	8.37	168.3	0		
12/31/2015	13:31:15	2131	6.3	8.36	173.5	0		
12/31/2015	13:32:05	2174	6.3	8.36	178.8	0		
12/31/2015	13:32:55	2254	6.3	8.36	184.0	0		
12/31/2015	13:33:45	2236	6.3	8.36	189.3	0		
12/31/2015	13:34:35	2274	6.3	8.36	194.6	0		
12/31/2015	13:35:25	2270	6.3	8.36	199.8	0		
12/31/2015	13:36:15	2260	6.3	8.36	205.1	0		
12/31/2015	13:37:05	2296	6.3	8.36	210.3	0		
12/31/2015	13:37:55	2293	6.3	8.36	215.6	0		
12/31/2015	13:38:45	2317	6.3	8.36	220.8	0		
12/31/2015	13:39:35	2313	6.3	8.36	226.1	0		
12/31/2015	13:40:25	2340	6.3	8.36	231.3	0		
12/31/2015	13:41:15	2328	6.3	8.36	236.6	0		
12/31/2015	13:42:05	2364	6.3	8.36	241.8	0		
12/31/2015	13:42:55	2381	6.3	8.36	247.1	0		
12/31/2015	13:43:45	2129	5.1	8.36	252.1	0		
12/31/2015	13:44:35	2218	5.1	8.36	256.4	0		
12/31/2015	13:45:00	2182	5.1	8.36	258.5	0	Cmt @ Surface 292 bbls away	
12/31/2015	13:45:25	2183	5.1	8.36	260.7	0		
12/31/2015	13:46:15	2200	5.1	8.36	264.9	0		
12/31/2015	13:47:05	2220	5.1	8.36	269.2	0		
12/31/2015	13:47:55	2242	5.1	8.36	273.5	0		
12/31/2015	13:48:45	2198	5.1	8.36	277.7	0		
12/31/2015	13:49:35	2243	5.1	8.36	282.0	0		
12/31/2015	13:50:25	2229	5.1	8.36	286.3	0		
12/31/2015	13:51:15	2279	5.1	8.36	290.6	0		
12/31/2015	13:52:05	2218	5.1	8.36	294.8	0		
12/31/2015	13:52:55	2309	5.1	8.36	299.1	0		
12/31/2015	13:53:45	2234	5.1	8.36	303.4	0		
12/31/2015	13:54:35	2249	5.1	8.36	307.6	0		
12/31/2015	13:55:25	2287	5.1	8.36	311.9	0		
12/31/2015	13:56:15	2291	5.1	8.36	316.1	0		
12/31/2015	13:57:05	2058	3.3	8.36	319.3	0		
12/31/2015	13:57:55	2070	3.3	8.36	322.0	0		
12/31/2015	13:58:00	2028	3.3	8.36	322.3	0	Bump Top Plug	
12/31/2015	13:58:01	2061	3.3	8.36	322.3	0	End Displacement	
12/31/2015	13:58:30	2721	0.5	8.36	323.9	0	Reset Total, Vol = 318 bbl	
12/31/2015	13:58:45	2701	0.0	8.36	323.9	0		
12/31/2015	13:59:30	2772	0.0	8.36	323.9	0	26 bbls Cmt back	
12/31/2015	13:59:35	2814	0.0	8.36	323.9	0		
12/31/2015	14:00:25	2752	0.0	8.36	324.0	0		
12/31/2015	14:01:15	821	0.0	8.36	324.0	0		



Well			Field		Job Start	Customer		Job Number
Whisper Rock 1C-25HZ			Wattenberg		Dec/31/2015	Anadarko		DAXH-00583
Date	Time 24-hr clock	Treating Pressure PSI	Flow Rate B/M	Density LB/G	Volume BBL	Solid Fraction NULL	Message	
12/31/2015	14:02:05	-6	0.1	8.36	324.0	0		
12/31/2015	14:02:55	1411	2.3	8.36	325.4	0		
12/31/2015	14:03:00	1575	2.2	8.36	325.6	0	Csg Test: 3000 psi	
12/31/2015	14:03:45	3087	2.2	8.36	327.2	0		
12/31/2015	14:04:35	3070	0.0	8.36	327.4	0		
12/31/2015	14:05:25	3073	0.0	8.36	327.4	0		
12/31/2015	14:06:15	3106	0.0	8.37	327.4	0		
12/31/2015	14:07:05	3109	0.0	8.36	327.4	0		
12/31/2015	14:07:55	3116	0.0	8.37	327.4	0		
12/31/2015	14:08:45	3142	0.0	8.37	327.4	0		
12/31/2015	14:09:35	3159	0.0	8.37	327.5	0		
12/31/2015	14:10:25	3165	0.0	8.37	327.5	0		
12/31/2015	14:11:15	3188	0.0	8.37	327.5	0		
12/31/2015	14:12:05	3201	0.0	8.37	327.5	0		
12/31/2015	14:12:55	3210	0.0	8.37	327.5	0		
12/31/2015	14:13:45	3229	0.0	8.37	327.5	0		
12/31/2015	14:14:35	3242	0.0	8.37	327.5	0		
12/31/2015	14:15:25	3253	0.0	8.37	327.6	0		
12/31/2015	14:16:15	3270	0.0	8.37	327.6	0		
12/31/2015	14:17:05	3273	0.0	8.37	327.6	0		
12/31/2015	14:17:55	3295	0.0	8.37	327.6	0		
12/31/2015	14:18:45	3305	0.0	8.37	327.6	0		
12/31/2015	14:19:35	1149	0.0	8.37	327.6	0		
12/31/2015	14:20:00	1	0.0	8.37	327.6	0	Csg Test: Good	
12/31/2015	14:20:25	-20	0.0	8.37	327.6	0		
12/31/2015	14:21:00	-20	0.0	8.37	327.6	0	End Job	
12/31/2015	14:21:15	-20	0.0	8.37	327.7	0		
12/31/2015	14:22:05	-16	0.0	8.37	327.7	0		
12/31/2015	14:22:55	-17	0.0	8.37	327.7	0		
12/31/2015	14:23:45	-15	0.0	8.37	327.7	0		

### Post Job Summary

Average Pump Rates, bbl/min					Volume of Fluid Injected, bbl						
Slurry	N2	Mud	Maximum Rate		Total Slurry 605.0	Mud	Spacer 81.0	N2			
Treating Pressure Summary, psi					Breakdown Fluid						
Maximum	Final 0	Average	Bump Plug to 2700	Breakdown	Type	Volume bbl	Density lb/gal				
Avg. N2 Percent %	Designed Slurry Volume 599.0 bbl		Displacement 318.0 bbl	Mix Water Temp 67 degF	Cement Circulated to Surface?		Volume 26.0 bbl				
					Washed Thru Perfs		To ft				
Customer or Authorized Representative David Cornett			Schlumberger Supervisor Matlock/Baird			Circulation Lost	Job Completed				
						-	-				