

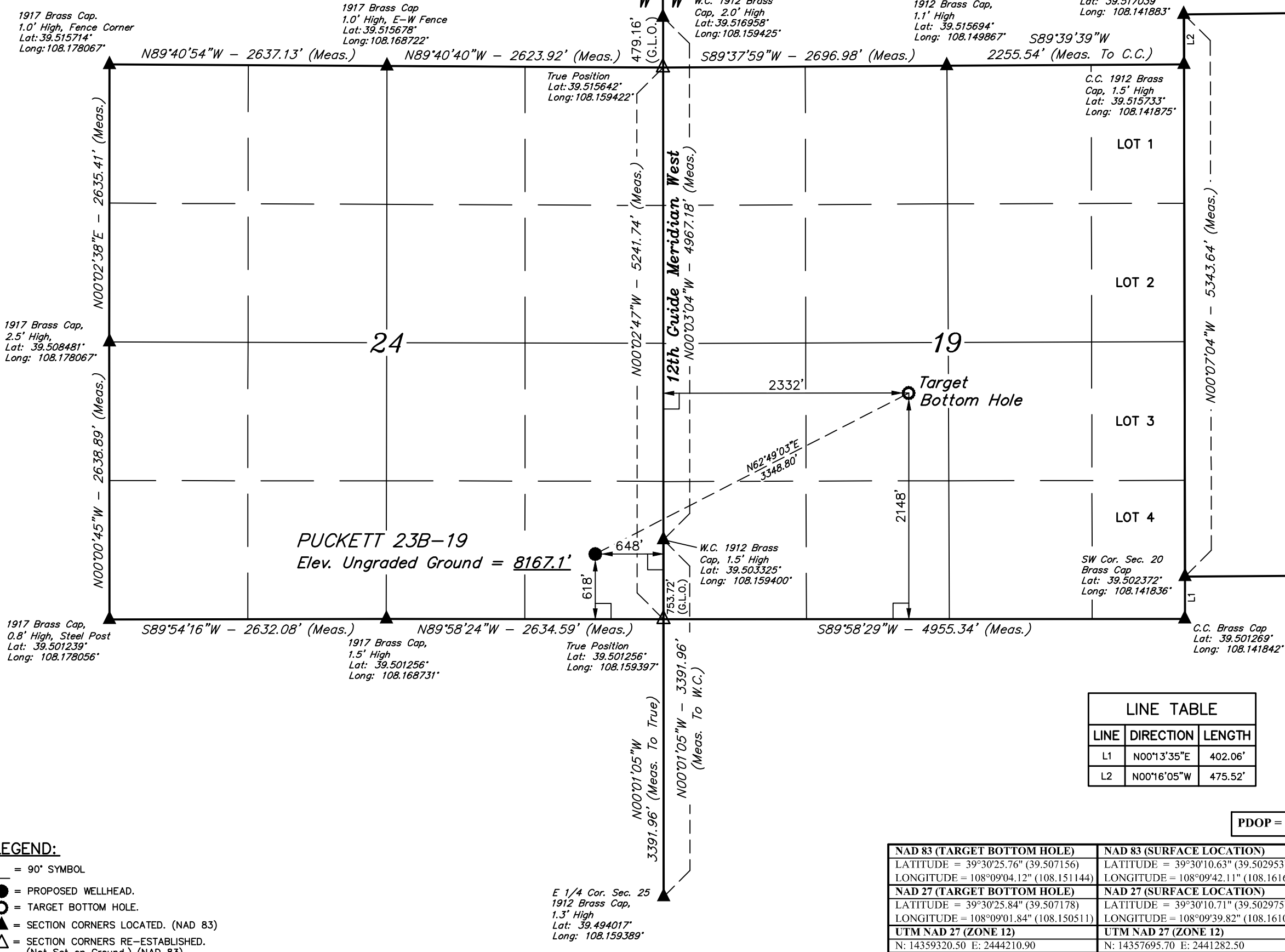
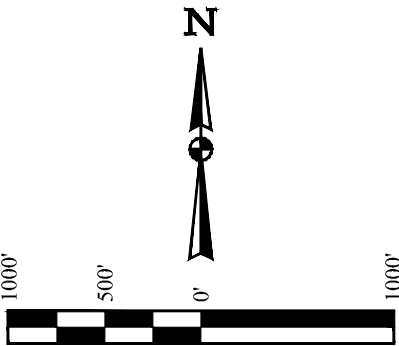
T6S, R97W, 6th P.M.

Caerus Oil & Gas LLC

PUCKETT 23B-19  
SE 1/4 SE 1/4, SECTION 24, T6S, R97W, 6th P.M.  
GARFIELD COUNTY, COLORADO

BASIS OF BEARINGS  
BASIS OF ELEVATION

SPOT ELEVATION AT THE NORTHWEST CORNER OF SECTION 30, T5S, R95W, 6th P.M., TAKEN FROM THE FORKED GULCH, QUADRANGLE, COLORADO, GARFIELD COUNTY, 7.5 MINUTE QUAD. (TOPOGRAPHIC MAP) PUBLISHED BY THE UNITED STATES DEPARTMENT OF THE INTERIOR, GEOLOGICAL SURVEY. SAID ELEVATION IS MARKED AS BEING 5966 FEET.



CERTIFICATE OF REGISTRATION  
THIS IS TO CERTIFY THAT THE ABOVE PLAT WAS PREPARED FROM FIELD NOTES OF ACTUAL SURVEYS MADE BY ME OR UNDER MY SUPERVISION AND THAT THE SAME ARE TRUE AND CORRECT TO THE BEST OF MY KNOWLEDGE AND BELIEF.  
REGISTERED LAND SURVEYOR  
REGISTRATION NO. 28285  
STATE OF COLORADO  
JAN 16 2016

LINE TABLE		
LINE	DIRECTION	LENGTH
L1	N00°13'35"E	402.06'
L2	N00°16'05"W	475.52'

PDOP = 1.2

NAD 83 (TARGET BOTTOM HOLE)	NAD 83 (SURFACE LOCATION)
LATITUDE = 39°30'25.76" (39.507156)	LATITUDE = 39°30'10.63" (39.502953)
LONGITUDE = 108°09'04.12" (108.151144)	LONGITUDE = 108°09'42.11" (108.161697)
NAD 27 (TARGET BOTTOM HOLE)	NAD 27 (SURFACE LOCATION)
LATITUDE = 39°30'25.84" (39.507178)	LATITUDE = 39°30'10.71" (39.502975)
LONGITUDE = 108°09'01.84" (108.150511)	LONGITUDE = 108°09'39.82" (108.161061)
UTM NAD 27 (ZONE 12)	UTM NAD 27 (ZONE 12)
N: 14359320.50 E: 2444210.90	N: 14357695.70 E: 2441282.50



UELS, LLC  
Corporate Office \* 85 South 200 East  
Vernal, UT 84078 \* (435) 789-1017

SURVEYED BY	DATE	REVISED BY	DATE
BRIAN BAKER, B.B.	12-14-15		
DRAWN BY	DATE		
M.D.	01-26-16		
SCALE	1" = 1000'		

WELL LOCATION PLAT