

US ROCKIES WATTENBERG PLANNING

Project: WELD-NAD83-UTMFT13N

Site: 4N-68W-26 Wilson Ranch 8-26HZ

Well: Whisper Rock 3N-25HZ

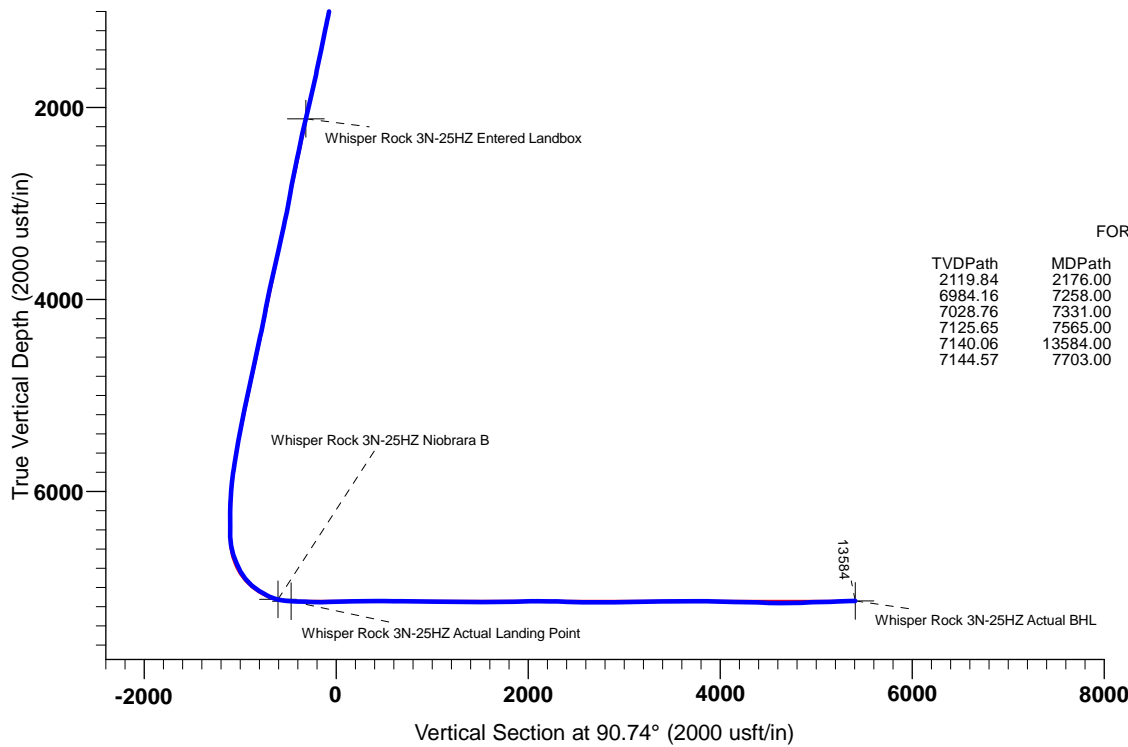
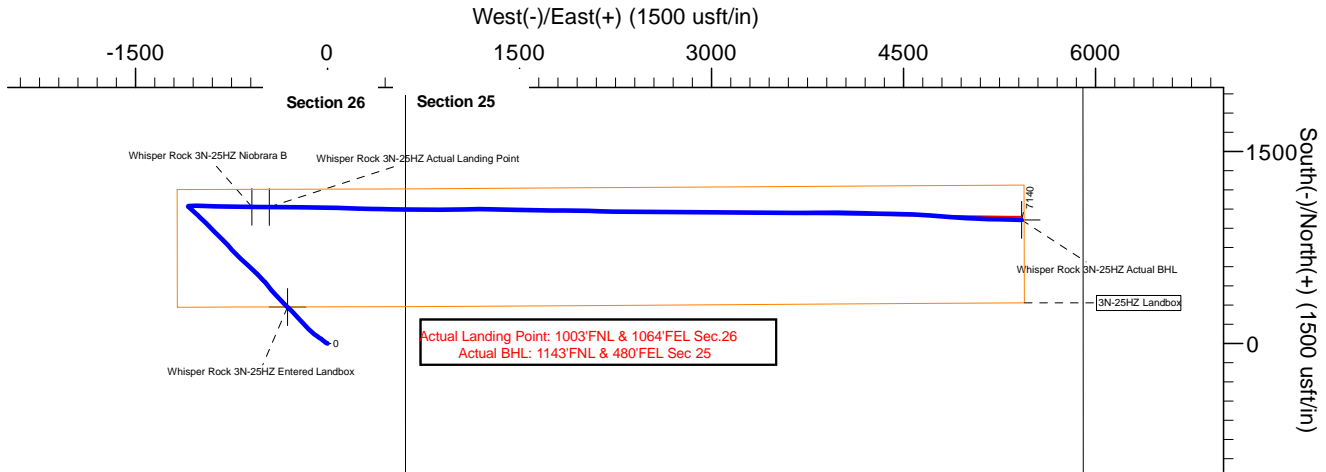
Wellbore: Whisper Rock 3N-25HZ

Design: Actual Surveys



CASING DETAILS

TVD	MD	Name	Size
1838.35	1879.40	9 5/8"	9-5/8
7140.68	13569.00	5 1/2"	5-1/2



FORMATION TOP DETAILS

TVDPPath	MDPath	Formation	DipAngle	DipDir
2119.84	2176.00	Entered Landbox	0.00	
6984.16	7258.00	Sharon Springs	0.00	
7028.76	7331.00	Niobrara	0.00	
7125.65	7565.00	Niobrara B	0.00	
7140.06	13584.00	Toe Depth	0.00	
7144.57	7703.00	Landing Depth	0.00	

TARGET DETAILS

Name	TVD	+N/-S	+E/-W	Northing	Easting	Latitude	Longitude	Shape
Whisper Rock 3N-25HZ Entered Landbox	2119.84	285.22	-312.24	14631248.68	1650449.85	40.287006	-104.964023	Point
Whisper Rock 3N-25HZ Niobrara B	7125.65	1067.46	-591.41	14632030.79	1650170.35	40.289154	-104.965024	Point
Whisper Rock 3N-25HZ Actual BHL	7140.06	966.33	5422.37	14631932.18	1656184.18	40.288875	-104.943459	Point
Whisper Rock 3N-25HZ Actual Landing Point	7144.57	1066.57	-454.92	14632029.96	1650306.84	40.289152	-104.964534	Point



US ROCKIES WATTENBERG PLANNING

WELD-NAD83-UTMFT13N

4N-68W-26 Wilson Ranch 8-26HZ

Whisper Rock 3N-25HZ

Whisper Rock 3N-25HZ

Design: Actual Surveys

Standard Survey Report

07 January, 2016

PDD

Survey Report

Company:	US ROCKIES WATTENBERG PLANNING	Local Co-ordinate Reference:	Well Whisper Rock 3N-25HZ
Project:	WELD-NAD83-UTMFT13N	TVD Reference:	4992' GL + 20' KB @ 5012.00usft (P462)
Site:	4N-68W-26 Wilson Ranch 8-26HZ	MD Reference:	4992' GL + 20' KB @ 5012.00usft (P462)
Well:	Whisper Rock 3N-25HZ	North Reference:	True
Wellbore:	Whisper Rock 3N-25HZ	Survey Calculation Method:	Minimum Curvature
Design:	Actual Surveys	Database:	EDM 5000.1 Single User Db

Project	WELD-NAD83-UTMFT13N		
Map System:	Universal Transverse Mercator (US Survey Feet)	System Datum:	Mean Sea Level
Geo Datum:	North American Datum 1983		
Map Zone:	Zone 13N (108 W to 102 W)		

Site	4N-68W-26 Wilson Ranch 8-26HZ, centered on 3N-25HZ				
Site Position:		Northing:	14,630,963.58 usft	Latitude:	40.286223
From:	Lat/Long	Easting:	1,650,762.21 usft	Longitude:	-104.962903
Position Uncertainty:	0.00 usft	Slot Radius:	13-3/16 "	Grid Convergence:	0.02 °

Well	Whisper Rock 3N-25HZ					
Well Position	+N/-S	0.00 usft	Northing:	14,630,963.58 usft	Latitude:	40.286223
	+E/-W	0.00 usft	Easting:	1,650,762.21 usft	Longitude:	-104.962903
Position Uncertainty		3.28 usft	Wellhead Elevation:	0.00 usft	Ground Level:	4,992.00 usft

Wellbore	Whisper Rock 3N-25HZ				
Magnetics	Model Name	Sample Date	Declination (°)	Dip Angle (°)	Field Strength (nT)
	IGRF2010	11/30/2015	8.36	66.77	52,580

Design	Actual Surveys				
Audit Notes:					
Version:	1.0	Phase:	ACTUAL	Tie On Depth:	0.00
Vertical Section:	Depth From (TVD) (usft)	+N/-S (usft)	+E/-W (usft)	Direction (°)	
	0.00	0.00	0.00	90.74	

Survey Program	Date	1/7/2016			
From (usft)	To (usft)	Survey (Wellbore)	Tool Name	Description	
129.00	1,830.00	SDI MWD Surveys (Whisper Rock 3N-25H	APC_ISCWSA REV 2 MWD	Fixed:v2:standard declination	
1,958.00	13,511.00	PDD MWD+IFR+MSA Surveys (Whisper R	APC_ISCWSA REV 2 MWD+	Fixed:v2:Rockies, crustal dec + 3-axis correction	

Survey										
Measured Depth (usft)	Inclination (°)	Azimuth (°)	Vertical Depth (usft)	+N/-S (usft)	+E/-W (usft)	Vertical Section (usft)	Dogleg Rate (°/100usft)	Build Rate (°/100usft)	Turn Rate (°/100usft)	
0.00	0.00	0.00	0.00	0.00	0.00	0.00	0.00	0.00	0.00	
129.00	0.48	159.65	129.00	-0.51	0.19	0.19	0.37	0.37	0.00	
220.00	0.67	300.95	220.00	-0.59	-0.14	-0.13	1.19	0.21	155.27	
310.00	2.26	300.89	309.96	0.59	-2.11	-2.12	1.77	1.77	-0.07	
431.00	3.91	298.19	430.78	3.77	-7.79	-7.84	1.37	1.36	-2.23	
611.00	6.32	306.57	610.06	12.57	-21.16	-21.32	1.40	1.34	4.66	
747.00	8.66	312.22	744.89	23.91	-34.76	-35.06	1.80	1.72	4.15	
837.00	9.53	305.64	833.76	32.81	-45.83	-46.25	1.51	0.97	-7.31	
929.00	11.25	302.60	924.25	42.08	-59.58	-60.12	1.96	1.87	-3.30	
1,017.00	12.78	304.38	1,010.32	52.20	-74.85	-75.52	1.79	1.74	2.02	

PDD

Survey Report

Company:	US ROCKIES WATTENBERG PLANNING	Local Co-ordinate Reference:	Well Whisper Rock 3N-25HZ
Project:	WELD-NAD83-UTMFT13N	TVD Reference:	4992' GL + 20' KB @ 5012.00usft (P462)
Site:	4N-68W-26 Wilson Ranch 8-26HZ	MD Reference:	4992' GL + 20' KB @ 5012.00usft (P462)
Well:	Whisper Rock 3N-25HZ	North Reference:	True
Wellbore:	Whisper Rock 3N-25HZ	Survey Calculation Method:	Minimum Curvature
Design:	Actual Surveys	Database:	EDM 5000.1 Single User Db

Survey									
Measured Depth (usft)	Inclination (°)	Azimuth (°)	Vertical Depth (usft)	+N/-S (usft)	+E/-W (usft)	Vertical Section (usft)	Dogleg Rate (°/100usft)	Build Rate (°/100usft)	Turn Rate (°/100usft)
1,107.00	13.86	306.49	1,097.90	64.23	-91.73	-92.55	1.32	1.20	2.34
1,197.00	15.26	309.08	1,185.00	78.11	-109.59	-110.59	1.72	1.56	2.88
1,287.00	15.89	310.41	1,271.70	93.56	-128.17	-129.37	0.80	0.70	1.48
1,377.00	15.76	314.56	1,358.29	110.13	-146.26	-147.67	1.27	-0.14	4.61
1,467.00	16.35	318.81	1,444.78	128.24	-163.31	-164.95	1.46	0.66	4.72
1,557.00	16.47	316.85	1,531.12	147.08	-180.38	-182.26	0.63	0.13	-2.18
1,647.00	16.78	317.14	1,617.36	165.91	-197.94	-200.07	0.36	0.34	0.32
1,737.00	17.95	316.42	1,703.25	185.48	-216.34	-218.72	1.32	1.30	-0.80
1,830.00	18.63	317.74	1,791.55	206.85	-236.21	-238.86	0.86	0.73	1.42
1,958.00	18.91	317.39	1,912.75	237.25	-264.00	-267.04	0.24	0.22	-0.27
2,147.00	17.67	312.73	2,092.20	279.26	-305.81	-309.39	1.01	-0.66	-2.47
2,336.00	16.95	313.96	2,272.64	317.85	-346.71	-350.78	0.43	-0.38	0.65
2,526.00	17.31	319.30	2,454.23	358.50	-385.08	-389.68	0.85	0.19	2.81
2,716.00	16.31	315.75	2,636.11	399.05	-422.13	-427.25	0.75	-0.53	-1.87
2,903.00	16.52	322.59	2,815.50	438.98	-456.61	-462.24	1.04	0.11	3.66
3,092.00	15.29	318.83	2,997.27	479.08	-489.34	-495.49	0.85	-0.65	-1.99
3,283.00	17.55	316.54	3,180.47	518.95	-525.73	-532.39	1.23	1.18	-1.20
3,473.00	15.72	313.42	3,362.52	557.44	-564.13	-571.29	1.07	-0.96	-1.64
3,661.00	17.47	313.32	3,542.68	594.30	-603.17	-610.79	0.93	0.93	-0.05
3,851.00	16.62	311.38	3,724.33	631.83	-644.31	-652.41	0.54	-0.45	-1.02
4,041.00	16.28	310.09	3,906.55	666.95	-685.07	-693.62	0.26	-0.18	-0.68
4,232.00	15.53	321.84	4,090.29	704.30	-721.36	-730.39	1.73	-0.39	6.15
4,419.00	17.27	316.98	4,269.68	744.29	-755.77	-765.32	1.18	0.93	-2.60
4,607.00	15.25	315.31	4,450.15	782.27	-792.20	-802.24	1.10	-1.07	-0.89
4,795.00	18.53	315.37	4,630.02	821.12	-830.58	-841.12	1.74	1.74	0.03
4,981.00	17.42	313.86	4,806.94	861.44	-871.42	-882.48	0.65	-0.60	-0.81
5,168.00	15.78	315.77	4,986.14	899.06	-909.35	-920.88	0.92	-0.88	1.02
5,357.00	15.94	314.87	5,167.95	935.79	-945.66	-957.67	0.16	0.08	-0.48
5,545.00	14.93	313.58	5,349.17	970.69	-981.51	-993.96	0.57	-0.54	-0.69
5,733.00	13.73	315.18	5,531.31	1,003.22	-1,014.78	-1,027.65	0.67	-0.64	0.85
5,924.00	11.95	311.65	5,717.53	1,032.44	-1,045.53	-1,058.78	1.02	-0.93	-1.85
6,114.00	8.36	311.23	5,904.53	1,054.62	-1,070.63	-1,084.16	1.89	-1.89	-0.22
6,305.00	3.37	306.88	6,094.47	1,067.15	-1,085.57	-1,099.26	2.62	-2.61	-2.28
6,494.00	0.30	37.50	6,283.36	1,070.88	-1,089.71	-1,103.45	1.79	-1.62	47.95
6,684.00	0.85	27.14	6,473.35	1,072.53	-1,088.77	-1,102.53	0.29	0.29	-5.45
6,779.00	10.53	90.66	6,567.79	1,073.06	-1,079.74	-1,093.51	10.71	10.19	66.86
6,874.00	18.30	83.29	6,659.74	1,074.70	-1,056.21	-1,070.00	8.39	8.18	-7.76
6,969.00	22.42	88.26	6,748.79	1,076.99	-1,023.27	-1,037.10	4.70	4.34	5.23
7,064.00	28.62	93.36	6,834.49	1,076.21	-982.41	-996.23	6.92	6.53	5.37
7,157.00	38.79	93.73	6,911.75	1,073.00	-930.97	-944.75	10.94	10.94	0.40
7,252.00	48.83	91.66	6,980.23	1,070.02	-865.36	-879.11	10.67	10.57	-2.18
7,347.00	56.62	90.88	7,037.72	1,068.37	-789.84	-803.58	8.23	8.20	-0.82
7,443.00	65.22	90.02	7,084.33	1,067.74	-706.03	-719.76	8.99	8.96	-0.90

PDD
Survey Report

Company:	US ROCKIES WATTENBERG PLANNING	Local Co-ordinate Reference:	Well Whisper Rock 3N-25HZ
Project:	WELD-NAD83-UTMFT13N	TVD Reference:	4992' GL + 20' KB @ 5012.00usft (P462)
Site:	4N-68W-26 Wilson Ranch 8-26HZ	MD Reference:	4992' GL + 20' KB @ 5012.00usft (P462)
Well:	Whisper Rock 3N-25HZ	North Reference:	True
Wellbore:	Whisper Rock 3N-25HZ	Survey Calculation Method:	Minimum Curvature
Design:	Actual Surveys	Database:	EDM 5000.1 Single User Db

Survey										
Measured Depth (usft)	Inclination (°)	Azimuth (°)	Vertical Depth (usft)	+N/-S (usft)	+E/-W (usft)	Vertical Section (usft)	Dogleg Rate (°/100usft)	Build Rate (°/100usft)	Turn Rate (°/100usft)	
7,538.00	72.81	90.21	7,118.33	1,067.56	-617.39	-631.13	7.99	7.99	0.20	
7,633.00	83.05	90.32	7,138.17	1,067.13	-524.62	-538.36	10.78	10.78	0.12	
7,729.00	87.73	90.70	7,145.88	1,066.28	-428.96	-442.70	4.89	4.88	0.40	
7,824.00	87.58	90.30	7,149.77	1,065.45	-334.04	-347.78	0.45	-0.16	-0.42	
7,919.00	87.43	90.13	7,153.91	1,065.09	-239.13	-252.87	0.24	-0.16	-0.18	
8,014.00	91.49	91.70	7,154.80	1,063.58	-144.17	-157.90	4.58	4.27	1.65	
8,109.00	91.92	91.32	7,151.97	1,061.07	-49.25	-62.95	0.60	0.45	-0.40	
8,204.00	92.37	90.99	7,148.42	1,059.16	45.66	31.98	0.59	0.47	-0.35	
8,299.00	90.23	91.73	7,146.26	1,056.91	140.61	126.95	2.38	-2.25	0.78	
8,394.00	90.72	91.82	7,145.48	1,053.96	235.56	221.93	0.52	0.52	0.09	
8,488.00	90.77	91.34	7,144.25	1,051.37	329.51	315.91	0.51	0.05	-0.51	
8,583.00	91.29	91.37	7,142.55	1,049.13	424.47	410.89	0.55	0.55	0.03	
8,676.00	88.66	90.43	7,142.59	1,047.66	517.45	503.88	3.00	-2.83	-1.01	
8,772.00	89.18	90.43	7,144.40	1,046.94	613.43	599.86	0.54	0.54	0.00	
8,867.00	89.94	90.55	7,145.13	1,046.13	708.42	694.85	0.81	0.80	0.13	
8,961.00	90.20	90.31	7,145.01	1,045.43	802.42	788.85	0.38	0.28	-0.26	
9,056.00	88.98	89.58	7,145.69	1,045.52	897.42	883.84	1.50	-1.28	-0.77	
9,151.00	88.61	89.41	7,147.69	1,046.35	992.39	978.80	0.43	-0.39	-0.18	
9,247.00	88.35	88.93	7,150.23	1,047.74	1,088.35	1,074.72	0.57	-0.27	-0.50	
9,342.00	89.09	88.53	7,152.36	1,049.85	1,183.30	1,169.64	0.89	0.78	-0.42	
9,438.00	89.96	92.37	7,153.15	1,049.10	1,279.27	1,265.62	4.10	0.91	4.00	
9,532.00	90.06	91.45	7,153.14	1,045.96	1,373.22	1,359.60	0.98	0.11	-0.98	
9,627.00	90.17	91.12	7,152.95	1,043.83	1,468.20	1,454.59	0.37	0.12	-0.35	
9,723.00	90.34	90.79	7,152.52	1,042.23	1,564.18	1,550.59	0.39	0.18	-0.34	
9,817.00	90.03	90.56	7,152.21	1,041.13	1,658.18	1,644.59	0.41	-0.33	-0.24	
9,912.00	90.93	91.11	7,151.42	1,039.74	1,753.16	1,739.59	1.11	0.95	0.58	
10,008.00	91.31	90.30	7,149.54	1,038.56	1,849.13	1,835.57	0.93	0.40	-0.84	
10,102.00	91.94	90.06	7,146.88	1,038.26	1,943.10	1,929.52	0.72	0.67	-0.26	
10,197.00	89.53	91.75	7,145.66	1,036.76	2,038.07	2,024.51	3.10	-2.54	1.78	
10,292.00	90.15	91.98	7,145.92	1,033.67	2,133.01	2,119.49	0.70	0.65	0.24	
10,387.00	89.41	91.69	7,146.29	1,030.63	2,227.96	2,214.47	0.84	-0.78	-0.31	
10,480.00	88.53	91.10	7,147.96	1,028.37	2,320.92	2,307.44	1.14	-0.95	-0.63	
10,574.00	88.28	90.62	7,150.58	1,026.96	2,414.87	2,401.41	0.58	-0.27	-0.51	
10,669.00	87.97	89.92	7,153.68	1,026.51	2,509.82	2,496.35	0.81	-0.33	-0.74	
10,764.00	89.90	90.02	7,155.45	1,026.56	2,604.80	2,591.32	2.03	2.03	0.11	
10,859.00	90.08	89.67	7,155.47	1,026.82	2,699.80	2,686.31	0.41	0.19	-0.37	
10,953.00	89.39	89.12	7,155.90	1,027.81	2,793.79	2,780.28	0.94	-0.73	-0.59	
11,048.00	89.76	91.48	7,156.61	1,027.31	2,888.78	2,875.27	2.51	0.39	2.48	
11,143.00	89.86	90.84	7,156.92	1,025.39	2,983.76	2,970.27	0.68	0.11	-0.67	
11,238.00	91.72	91.08	7,155.61	1,023.80	3,078.73	3,065.25	1.97	1.96	0.25	
11,333.00	91.80	90.72	7,152.69	1,022.30	3,173.68	3,160.21	0.39	0.08	-0.38	
11,425.00	91.89	90.39	7,149.73	1,021.41	3,265.62	3,252.16	0.37	0.10	-0.36	
11,518.00	92.04	89.63	7,146.54	1,021.40	3,358.57	3,345.10	0.83	0.16	-0.82	

PDD
Survey Report

Company:	US ROCKIES WATTENBERG PLANNING	Local Co-ordinate Reference:	Well Whisper Rock 3N-25HZ
Project:	WELD-NAD83-UTMFT13N	TVD Reference:	4992' GL + 20' KB @ 5012.00usft (P462)
Site:	4N-68W-26 Wilson Ranch 8-26HZ	MD Reference:	4992' GL + 20' KB @ 5012.00usft (P462)
Well:	Whisper Rock 3N-25HZ	North Reference:	True
Wellbore:	Whisper Rock 3N-25HZ	Survey Calculation Method:	Minimum Curvature
Design:	Actual Surveys	Database:	EDM 5000.1 Single User Db

Survey										
Measured Depth (usft)	Inclination (°)	Azimuth (°)	Vertical Depth (usft)	+N/-S (usft)	+E/-W (usft)	Vertical Section (usft)	Dogleg Rate (°/100usft)	Build Rate (°/100usft)	Turn Rate (°/100usft)	
11,613.00	89.77	90.45	7,145.04	1,021.33	3,453.55	3,440.07	2.54	-2.39	0.86	
11,707.00	90.16	90.74	7,145.10	1,020.35	3,547.54	3,534.07	0.52	0.41	0.31	
11,801.00	89.71	90.51	7,145.21	1,019.33	3,641.54	3,628.07	0.54	-0.48	-0.24	
11,895.00	89.95	89.38	7,145.49	1,019.42	3,735.54	3,722.06	1.23	0.26	-1.20	
11,991.00	89.99	88.84	7,145.54	1,020.91	3,831.52	3,818.02	0.56	0.04	-0.56	
12,086.00	88.77	90.22	7,146.56	1,021.69	3,926.51	3,912.99	1.94	-1.28	1.45	
12,180.00	88.47	89.67	7,148.83	1,021.78	4,020.48	4,006.95	0.67	-0.32	-0.59	
12,276.00	88.96	92.21	7,150.98	1,020.21	4,116.44	4,102.92	2.69	0.51	2.65	
12,371.00	88.74	91.73	7,152.89	1,016.94	4,211.36	4,197.88	0.56	-0.23	-0.51	
12,466.00	88.52	91.43	7,155.16	1,014.32	4,306.30	4,292.84	0.39	-0.23	-0.32	
12,561.00	88.09	91.00	7,157.97	1,012.31	4,401.24	4,387.80	0.64	-0.45	-0.45	
12,656.00	87.75	90.73	7,161.42	1,010.88	4,496.16	4,482.73	0.46	-0.36	-0.28	
12,752.00	89.29	92.69	7,163.90	1,008.01	4,592.08	4,578.68	2.60	1.60	2.04	
12,846.00	89.87	94.24	7,164.59	1,002.33	4,685.90	4,672.57	1.76	0.62	1.65	
12,942.00	91.87	94.63	7,163.13	994.91	4,781.60	4,768.35	2.12	2.08	0.41	
13,037.00	92.05	94.04	7,159.88	987.73	4,876.27	4,863.11	0.65	0.19	-0.62	
13,131.00	92.83	94.06	7,155.88	981.10	4,969.95	4,956.87	0.83	0.83	0.02	
13,226.00	91.00	92.36	7,152.70	975.78	5,064.74	5,051.72	2.63	-1.93	-1.79	
13,320.00	91.77	91.85	7,150.43	972.33	5,158.65	5,145.66	0.98	0.82	-0.54	
13,415.00	92.33	91.28	7,147.03	969.74	5,253.55	5,240.59	0.84	0.59	-0.60	
13,511.00	92.38	91.11	7,143.09	967.74	5,349.45	5,336.51	0.18	0.05	-0.18	
13,584.00	92.38	91.11	7,140.06	966.33	5,422.37	5,409.44	0.00	0.00	0.00	

Design Targets									
Target Name	Dip Angle (°)	Dip Dir. (°)	TVD (usft)	+N/-S (usft)	+E/-W (usft)	Northing (usft)	Easting (usft)	Latitude	Longitude
Whisper Rock 3N-25HZ - hit/miss target - Shape - actual wellpath hits target center - Point	0.00	0.00	2,119.84	285.22	-312.24	14,631,248.67	1,650,449.84	40.287006	-104.964023
Whisper Rock 3N-25HZ - actual wellpath misses target center by 0.02usft at 7564.98usft MD (7125.65 TVD, 1067.46 N, -591.43 E) - Point	0.00	0.00	7,125.65	1,067.46	-591.41	14,632,030.79	1,650,170.35	40.289154	-104.965024
Whisper Rock 3N-25HZ - actual wellpath hits target center - Point	0.00	0.00	7,140.06	966.33	5,422.37	14,631,932.18	1,656,184.18	40.288875	-104.943459
Whisper Rock 3N-25HZ - actual wellpath hits target center - Point	0.00	0.00	7,144.57	1,066.57	-454.92	14,632,029.96	1,650,306.84	40.289152	-104.964535

PDD
Survey Report

Company:	US ROCKIES WATTENBERG PLANNING	Local Co-ordinate Reference:	Well Whisper Rock 3N-25HZ
Project:	WELD-NAD83-UTMFT13N	TVD Reference:	4992' GL + 20' KB @ 5012.00usft (P462)
Site:	4N-68W-26 Wilson Ranch 8-26HZ	MD Reference:	4992' GL + 20' KB @ 5012.00usft (P462)
Well:	Whisper Rock 3N-25HZ	North Reference:	True
Wellbore:	Whisper Rock 3N-25HZ	Survey Calculation Method:	Minimum Curvature
Design:	Actual Surveys	Database:	EDM 5000.1 Single User Db

Casing Points					
Measured Depth (usft)	Vertical Depth (usft)	Name	Casing Diameter (")	Hole Diameter (")	
1,879.40	1,838.35	9 5/8"	9-5/8	13-1/2	
13,569.00	7,140.68	5 1/2"	5-1/2	8-1/2	

Formations					
Measured Depth (usft)	Vertical Depth (usft)	Name	Lithology	Dip (°)	Dip Direction (°)
2,176.00	2,119.84	Entered Landbox		0.00	
7,258.00	6,984.16	Sharon Springs		0.00	
7,331.00	7,028.76	Niobrara		0.00	
7,565.00	7,125.65	Niobrara B		0.00	
13,584.00	7,140.06	Toe Depth		0.00	
7,703.00	7,144.57	Landing Depth		0.00	

Design Annotations					
Measured Depth (usft)	Vertical Depth (usft)	Local Coordinates			
		+N/-S (usft)	+E/-W (usft)	Comment	
13,584.00	7,140.06	966.33	5,422.37	Projection to Bit	

Checked By: _____ Approved By: _____ Date: _____