

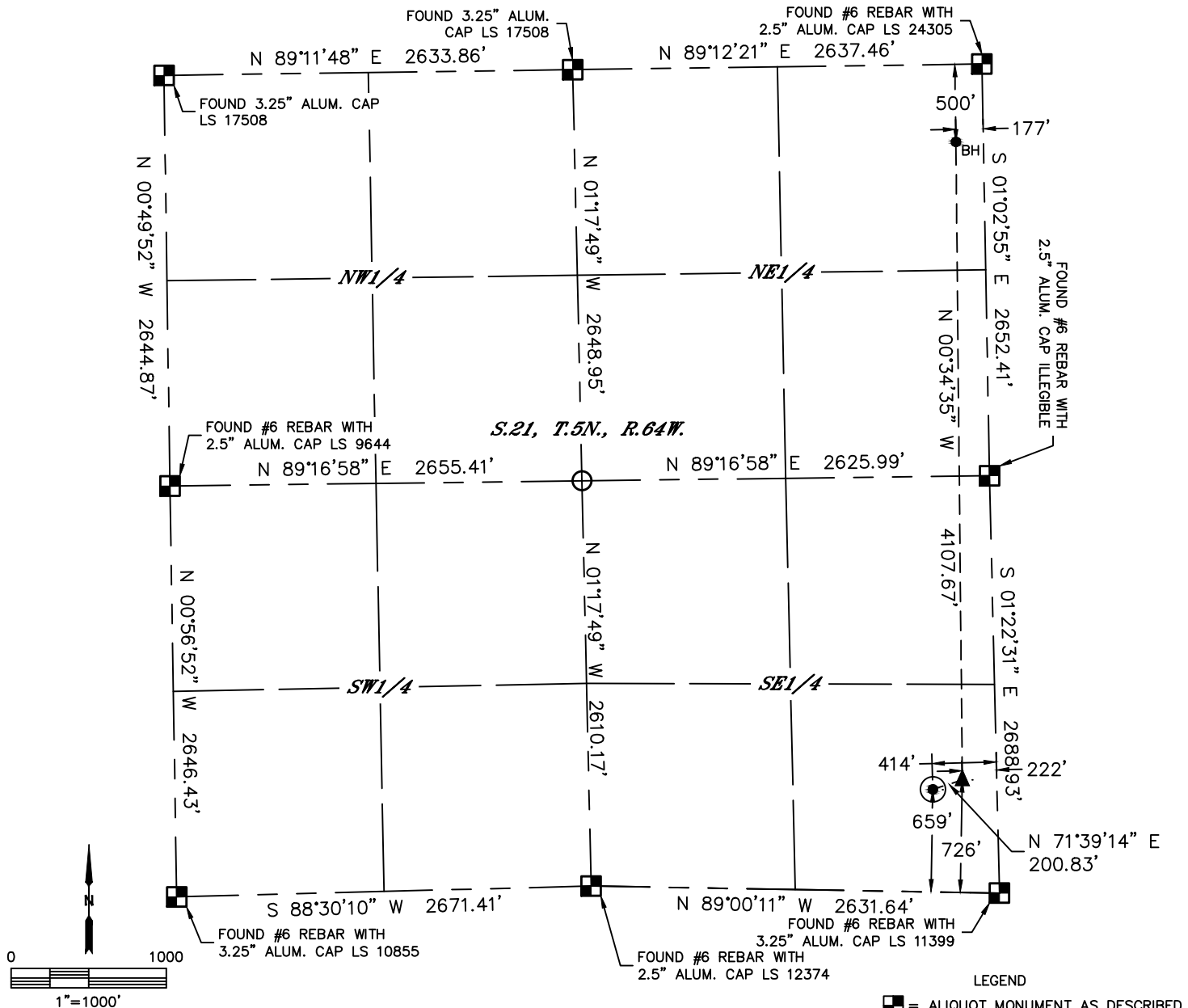


Lat40°, Inc. 6250 W. 10th Street, Unit 2, Greeley, CO 970-515-5294

WELL LOCATION CERTIFICATE

CHESNUT 21Y-401

SECTION: 21
TOWNSHIP: 5N
RANGE: 64W
6TH. P.M.
WELD COUNTY, CO



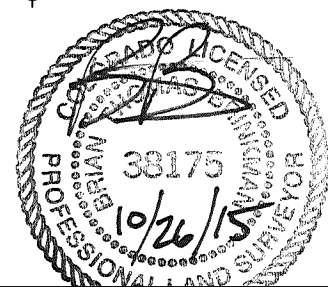
CLIENT: PDC ENERGY				LANDMAN: JEFF DILLINGHAM			
INSTRUMENT OPERATOR: ADAM KELLY				SURVEY DATE: 11/6/2014		SURFACE USE: CROPLAND	
SHL FOOTAGE		SHL LAT °	SHL LONG °	SHL PDOP	SHL ELEV (FT.)	SHL 1/4/1/4	SHL S-T-R
659	FSL	414	FEL	40.37929	-104.54678	2.2	4644 SESE 21-5-64

BHL FOOTAGE	BHL LAT °	BHL LONG °	BHL S-T-R	EP LAT °	EP LONG °	EP S-T-R
500	FNL	177	FEL	40.39073	-104.54609	21-5-64

NEAREST CULTURAL ITEMS	
BUILDING	±427' SE
BUILDING UNIT	±442' SE
HIGH OCCUPANCY BUILDING UNIT	±3074' NW
DESIGNATED OUTSIDE ACTIVITY AREA	5280'+
PUBLIC ROAD (COUNTY ROAD 55)	±398' E
ABOVE GROUND UTILITY	±426' E
RAILROAD	±2087' N
PROPERTY LINE	±414' E

NOTE:
1) Bearings shown are Grid Bearings of the Colorado State Plane Coordinate System, North Zone, North American Datum 1983. The lineal dimensions as contained herein are based upon the "U.S. Survey Foot."
2) Distances to section lines measured at 90 degrees from said section lines.
3) Ground elevations are based on an observed GPS elevation (NAVD 1988 DATUM).
4) Latitude and Longitude shown are (NAD 83 DATUM).
5) IMPROVEMENTS: See LOCATION DRAWING for all visible improvements within 500' of oil and gas location.
6) This map does not represent a boundary survey.

- LEGEND
- = ALIQUOT MONUMENT AS DESCRIBED
 - = CALCULATED POSITION
 - = SURFACE HOLE LOCATION (SHL)
 - ▲ = ENTRY POINT LOCATION (EP)
 - BH = BOTTOM HOLE LOCATION (BHL)
 - ⊙ = EXISTING WELL
 - ⊙ = ABANDONED WELL



Brian T. Brinkman, on behalf of Lat40°, Inc.
Colorado Licensed Professional Land Surveyor No. 38175
DATE: 10/27/2015
PROJECT#: 2014040

SECTION: 21
TOWNSHIP: 5N
RANGE: 64W
6TH. P.M.
WELD COUNTY, CO