



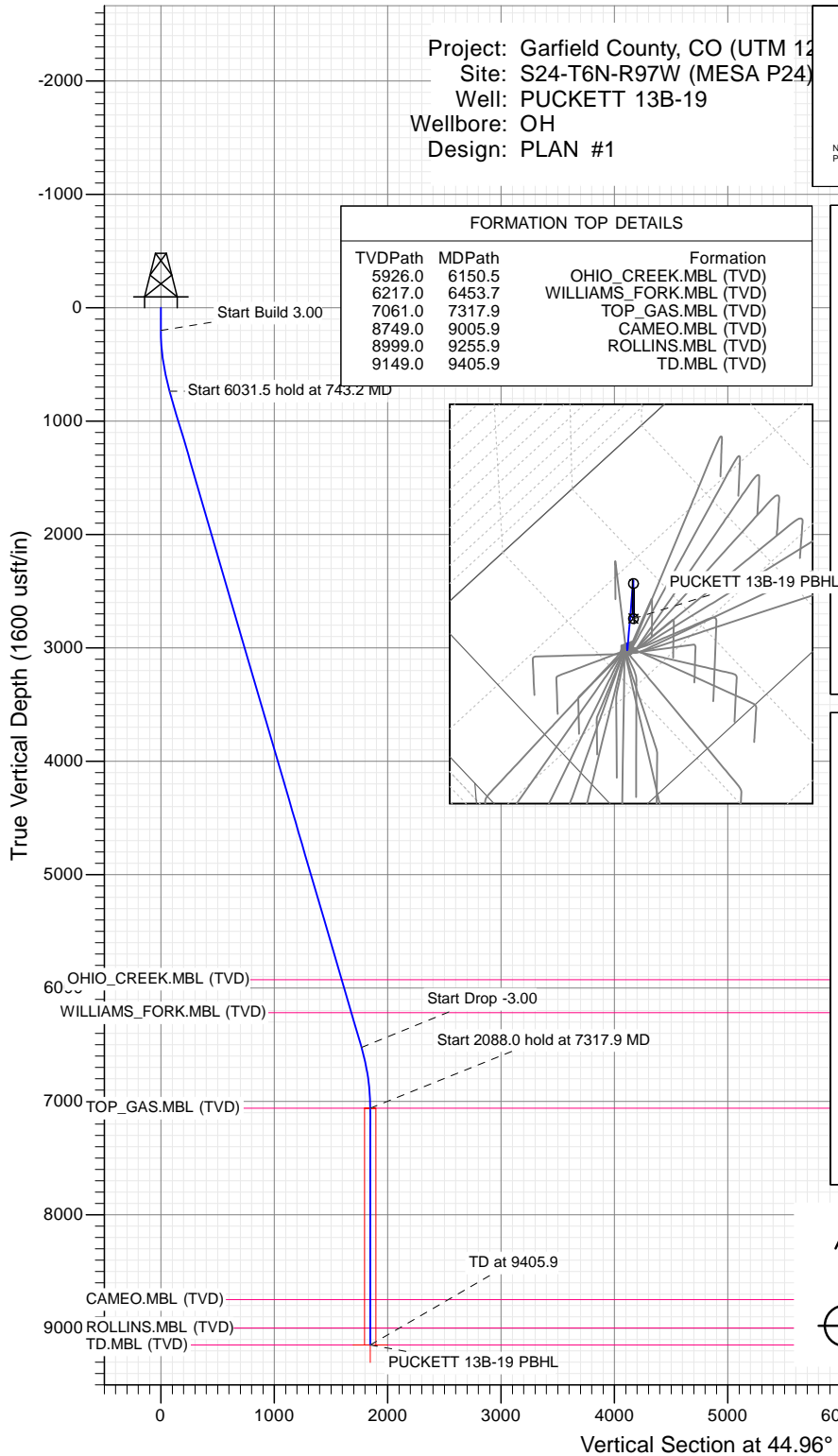
SECTION DETAILS

Sec	MD	Inc	Azi	TVD	+N/-S	+E/-W	Dleg	TFace	Vsect	Target
1	0.0	0.00	0.00	0.0	0.0	0.0	0.00	0.00	0.0	
2	200.0	0.00	0.00	200.0	0.0	0.0	0.00	0.00	0.0	
3	743.2	16.30	44.96	735.9	54.3	54.2	3.00	44.96	76.7	
4	6774.7	16.30	44.96	6525.1	1251.8	1250.1	0.00	0.00	1769.1	
5	7317.9	0.00	0.00	7061.0	1306.1	1304.3	3.00	180.00	1845.9	
6	9405.9	0.00	0.00	9149.0	1306.1	1304.3	0.00	0.00	1845.9	PUCKETT 13B-19 PBHL

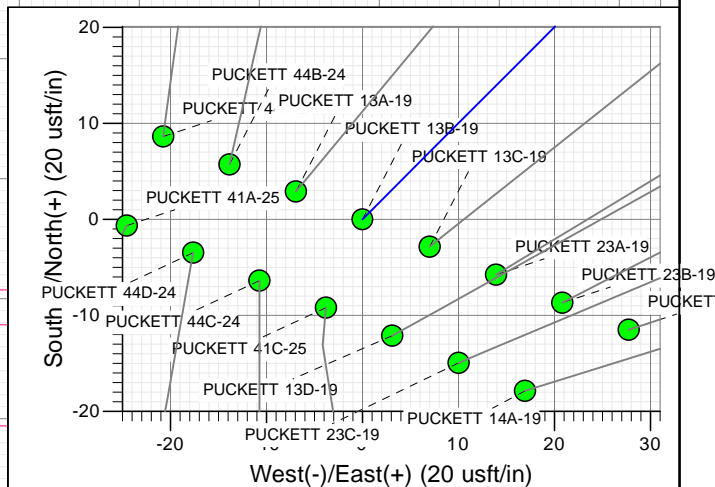
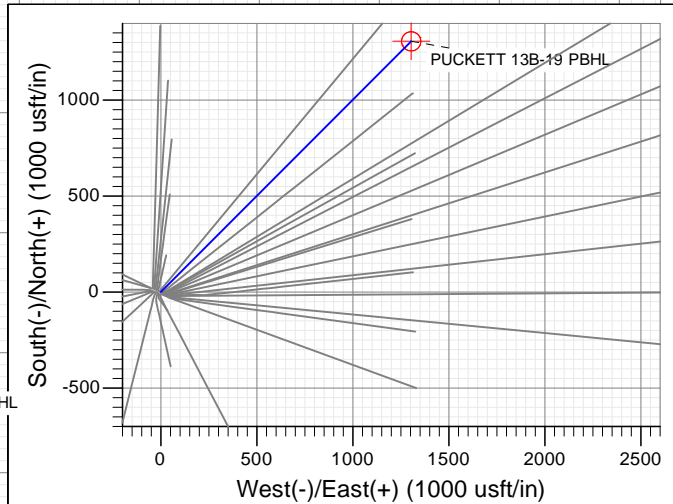
Project: Garfield County, CO (UTM 12
Site: S24-T6N-R97W (MESA P24)
Well: PUCKETT 13B-19
Wellbore: OH
Design: PLAN #1

FORMATION TOP DETAILS

TVDPath	MDPath	Formation
5926.0	6150.5	OHIO_CREEK.MBL (TVD)
6217.0	6453.7	WILLIAMS_FORK.MBL (TVD)
7061.0	7317.9	TOP_GAS.MBL (TVD)
8749.0	9005.9	CAMEO.MBL (TVD)
8999.0	9255.9	ROLLINS.MBL (TVD)
9149.0	9405.9	TD.MBL (TVD)



Type	Target	Azimuth	Origin Type	N/S	E/W	From TVD
TD	No Target (Freehand)	44.96	Slot	0.0	0.0	0.0
Name		TVD	+N/-S	+E/-W	Latitude	Longitude
PUCKETT 13B-19 PBHL		9149.0	1306.1	1304.3	39.506584	-108.156514



Azimuths to True North
Magnetic North: 9.80°

Magnetic Field
Strength: 51867.7snT
Dip Angle: 65.87°
Date: 2/16/2016
Model: HDGM

CASING DETAILS

No casing data is available

WELL DETAILS: PUCKETT 13B-19

+N/-S	+E/-W	Northing	Easting	Latitude	Longitude
0.0	0.0	14357703.70	2441261.40	39.502999	-108.161134



Planning Report

Database:	USA EDM 5000 Multi Users DB	Local Co-ordinate Reference:	Well PUCKETT 13B-19
Company:	Caerus Oil & Gas	TVD Reference:	30' KB @ 8181.0usft
Project:	Garfield County, CO (UTM 12N)	MD Reference:	30' KB @ 8181.0usft
Site:	S24-T6N-R97W (MESA P24)	North Reference:	True
Well:	PUCKETT 13B-19	Survey Calculation Method:	Minimum Curvature
Wellbore:	OH		
Design:	PLAN #1		

Project	Garfield County, CO (UTM 12N)		
Map System:	Universal Transverse Mercator (US Survey Feet)	System Datum:	Mean Sea Level
Geo Datum:	NAD 1927 - Western US		
Map Zone:	Zone 12N (114 W to 108 W)		

Site		S24-T6N-R97W (MESA P24)			
Site Position:		Northing:	14,357,707.60 usft	Latitude:	39.503013
From:	Map	Easting:	2,441,222.80 usft	Longitude:	-108.161271
Position Uncertainty:	0.0 usft	Slot Radius:	13-3/16 "	Grid Convergence:	1.81 °

Well	PUCKETT 13B-19					
Well Position	+N/-S	0.0 usft	Northing:	14,357,703.70 usft	Latitude:	39.502999
	+E/-W	0.0 usft	Easting:	2,441,261.40 usft	Longitude:	-108.161134
Position Uncertainty		0.0 usft	Wellhead Elevation:	0.0 usft	Ground Level:	8,151.0 usft

Wellbore	OH				
Magnetics	Model Name	Sample Date	Declination (°)	Dip Angle (°)	Field Strength (nT)
	HDGM	2/16/2016	9.80	65.87	51,868

Design	PLAN #1			
Audit Notes:				
Version:	Phase:	PLAN	Tie On Depth:	0.0
Vertical Section:	Depth From (TVD) (usft)	+N/-S (usft)	+E/-W (usft)	Direction (°)
	0.0	0.0	0.0	44.96

Plan Sections										
Measured Depth (usft)	Inclination (°)	Azimuth (°)	Vertical Depth (usft)	+N/-S (usft)	+E/-W (usft)	Dogleg Rate (°/100usft)	Build Rate (°/100usft)	Turn Rate (°/100usft)	TFO (°)	Target
0.0	0.00	0.00	0.0	0.0	0.0	0.00	0.00	0.00	0.00	
200.0	0.00	0.00	200.0	0.0	0.0	0.00	0.00	0.00	0.00	
743.2	16.30	44.96	735.9	54.3	54.2	3.00	3.00	0.00	44.96	
6,774.7	16.30	44.96	6,525.1	1,251.8	1,250.1	0.00	0.00	0.00	0.00	
7,317.9	0.00	0.00	7,061.0	1,306.1	1,304.3	3.00	-3.00	0.00	180.00	
9,405.9	0.00	0.00	9,149.0	1,306.1	1,304.3	0.00	0.00	0.00	0.00	PUCKETT 13B-19 PE

Planning Report

Database:	USA EDM 5000 Multi Users DB	Local Co-ordinate Reference:	Well PUCKETT 13B-19
Company:	Caerus Oil & Gas	TVD Reference:	30' KB @ 8181.0usft
Project:	Garfield County, CO (UTM 12N)	MD Reference:	30' KB @ 8181.0usft
Site:	S24-T6N-R97W (MESA P24)	North Reference:	True
Well:	PUCKETT 13B-19	Survey Calculation Method:	Minimum Curvature
Wellbore:	OH		
Design:	PLAN #1		

Planned Survey									
Measured Depth (usft)	Inclination (°)	Azimuth (°)	Vertical Depth (usft)	+N/-S (usft)	+E/-W (usft)	Vertical Section (usft)	Dogleg Rate (°/100usft)	Build Rate (°/100u)	Comments / Formations
0.0	0.00	0.00	0.0	0.0	0.0	0.0	0.00	0.00	
100.0	0.00	0.00	100.0	0.0	0.0	0.0	0.00	0.00	
200.0	0.00	0.00	200.0	0.0	0.0	0.0	0.00	0.00	Start Build 3.00
300.0	3.00	44.96	300.0	1.9	1.8	2.6	3.00	3.00	
400.0	6.00	44.96	399.6	7.4	7.4	10.5	3.00	3.00	
500.0	9.00	44.96	498.8	16.6	16.6	23.5	3.00	3.00	
600.0	12.00	44.96	597.1	29.5	29.5	41.7	3.00	3.00	
700.0	15.00	44.96	694.3	46.0	46.0	65.1	3.00	3.00	
743.2	16.30	44.96	735.9	54.3	54.2	76.7	3.00	3.00	Start 6031.5 hold at 743.2 MD
800.0	16.30	44.96	790.4	65.6	65.5	92.7	0.00	0.00	
900.0	16.30	44.96	886.4	85.4	85.3	120.7	0.00	0.00	
1,000.0	16.30	44.96	982.4	105.3	105.1	148.8	0.00	0.00	
1,100.0	16.30	44.96	1,078.4	125.1	125.0	176.8	0.00	0.00	
1,200.0	16.30	44.96	1,174.4	145.0	144.8	204.9	0.00	0.00	
1,300.0	16.30	44.96	1,270.3	164.8	164.6	233.0	0.00	0.00	
1,400.0	16.30	44.96	1,366.3	184.7	184.4	261.0	0.00	0.00	
1,500.0	16.30	44.96	1,462.3	204.6	204.3	289.1	0.00	0.00	
1,600.0	16.30	44.96	1,558.3	224.4	224.1	317.1	0.00	0.00	
1,700.0	16.30	44.96	1,654.3	244.3	243.9	345.2	0.00	0.00	
1,800.0	16.30	44.96	1,750.3	264.1	263.8	373.3	0.00	0.00	
1,900.0	16.30	44.96	1,846.2	284.0	283.6	401.3	0.00	0.00	
2,000.0	16.30	44.96	1,942.2	303.8	303.4	429.4	0.00	0.00	
2,100.0	16.30	44.96	2,038.2	323.7	323.2	457.4	0.00	0.00	
2,200.0	16.30	44.96	2,134.2	343.5	343.1	485.5	0.00	0.00	
2,300.0	16.30	44.96	2,230.2	363.4	362.9	513.6	0.00	0.00	
2,400.0	16.30	44.96	2,326.1	383.2	382.7	541.6	0.00	0.00	
2,500.0	16.30	44.96	2,422.1	403.1	402.5	569.7	0.00	0.00	
2,600.0	16.30	44.96	2,518.1	423.0	422.4	597.7	0.00	0.00	
2,700.0	16.30	44.96	2,614.1	442.8	442.2	625.8	0.00	0.00	
2,800.0	16.30	44.96	2,710.1	462.7	462.0	653.9	0.00	0.00	
2,900.0	16.30	44.96	2,806.1	482.5	481.9	681.9	0.00	0.00	
3,000.0	16.30	44.96	2,902.0	502.4	501.7	710.0	0.00	0.00	
3,100.0	16.30	44.96	2,998.0	522.2	521.5	738.0	0.00	0.00	
3,200.0	16.30	44.96	3,094.0	542.1	541.3	766.1	0.00	0.00	
3,300.0	16.30	44.96	3,190.0	561.9	561.2	794.2	0.00	0.00	
3,400.0	16.30	44.96	3,286.0	581.8	581.0	822.2	0.00	0.00	
3,500.0	16.30	44.96	3,382.0	601.6	600.8	850.3	0.00	0.00	
3,600.0	16.30	44.96	3,477.9	621.5	620.6	878.3	0.00	0.00	
3,700.0	16.30	44.96	3,573.9	641.4	640.5	906.4	0.00	0.00	
3,800.0	16.30	44.96	3,669.9	661.2	660.3	934.5	0.00	0.00	
3,900.0	16.30	44.96	3,765.9	681.1	680.1	962.5	0.00	0.00	
4,000.0	16.30	44.96	3,861.9	700.9	700.0	990.6	0.00	0.00	
4,100.0	16.30	44.96	3,957.8	720.8	719.8	1,018.6	0.00	0.00	
4,200.0	16.30	44.96	4,053.8	740.6	739.6	1,046.7	0.00	0.00	
4,300.0	16.30	44.96	4,149.8	760.5	759.4	1,074.8	0.00	0.00	
4,400.0	16.30	44.96	4,245.8	780.3	779.3	1,102.8	0.00	0.00	
4,500.0	16.30	44.96	4,341.8	800.2	799.1	1,130.9	0.00	0.00	
4,600.0	16.30	44.96	4,437.8	820.1	818.9	1,158.9	0.00	0.00	
4,700.0	16.30	44.96	4,533.7	839.9	838.8	1,187.0	0.00	0.00	
4,800.0	16.30	44.96	4,629.7	859.8	858.6	1,215.0	0.00	0.00	
4,900.0	16.30	44.96	4,725.7	879.6	878.4	1,243.1	0.00	0.00	
5,000.0	16.30	44.96	4,821.7	899.5	898.2	1,271.2	0.00	0.00	

Planning Report

Database:	USA EDM 5000 Multi Users DB	Local Co-ordinate Reference:	Well PUCKETT 13B-19
Company:	Caerus Oil & Gas	TVD Reference:	30' KB @ 8181.0usft
Project:	Garfield County, CO (UTM 12N)	MD Reference:	30' KB @ 8181.0usft
Site:	S24-T6N-R97W (MESA P24)	North Reference:	True
Well:	PUCKETT 13B-19	Survey Calculation Method:	Minimum Curvature
Wellbore:	OH		
Design:	PLAN #1		

Planned Survey

Measured Depth (usft)	Inclination (°)	Azimuth (°)	Vertical Depth (usft)	+N/-S (usft)	+E/-W (usft)	Vertical Section (usft)	Dogleg Rate (°/100usft)	Build Rate (°/100u)	Comments / Formations
5,100.0	16.30	44.96	4,917.7	919.3	918.1	1,299.2	0.00	0.00	
5,200.0	16.30	44.96	5,013.7	939.2	937.9	1,327.3	0.00	0.00	
5,300.0	16.30	44.96	5,109.6	959.0	957.7	1,355.3	0.00	0.00	
5,400.0	16.30	44.96	5,205.6	978.9	977.5	1,383.4	0.00	0.00	
5,500.0	16.30	44.96	5,301.6	998.7	997.4	1,411.5	0.00	0.00	
5,600.0	16.30	44.96	5,397.6	1,018.6	1,017.2	1,439.5	0.00	0.00	
5,700.0	16.30	44.96	5,493.6	1,038.5	1,037.0	1,467.6	0.00	0.00	
5,800.0	16.30	44.96	5,589.6	1,058.3	1,056.9	1,495.6	0.00	0.00	
5,900.0	16.30	44.96	5,685.5	1,078.2	1,076.7	1,523.7	0.00	0.00	
6,000.0	16.30	44.96	5,781.5	1,098.0	1,096.5	1,551.8	0.00	0.00	
6,100.0	16.30	44.96	5,877.5	1,117.9	1,116.3	1,579.8	0.00	0.00	
6,150.5	16.30	44.96	5,926.0	1,127.9	1,126.4	1,594.0	0.00	0.00	OHIO_CREEK.MBL (TVD)
6,200.0	16.30	44.96	5,973.5	1,137.7	1,136.2	1,607.9	0.00	0.00	
6,300.0	16.30	44.96	6,069.5	1,157.6	1,156.0	1,635.9	0.00	0.00	
6,400.0	16.30	44.96	6,165.4	1,177.4	1,175.8	1,664.0	0.00	0.00	
6,453.7	16.30	44.96	6,217.0	1,188.1	1,186.5	1,679.1	0.00	0.00	WILLIAMS_FORK.MBL (TVD)
6,500.0	16.30	44.96	6,261.4	1,197.3	1,195.6	1,692.1	0.00	0.00	
6,600.0	16.30	44.96	6,357.4	1,217.1	1,215.5	1,720.1	0.00	0.00	
6,700.0	16.30	44.96	6,453.4	1,237.0	1,235.3	1,748.2	0.00	0.00	
6,774.7	16.30	44.96	6,525.1	1,251.8	1,250.1	1,769.1	0.00	0.00	Start Drop -3.00
6,800.0	15.54	44.96	6,549.4	1,256.7	1,255.0	1,776.1	3.00	-3.00	
6,900.0	12.54	44.96	6,646.4	1,273.9	1,272.2	1,800.3	3.00	-3.00	
7,000.0	9.54	44.96	6,744.6	1,287.4	1,285.7	1,819.5	3.00	-3.00	
7,100.0	6.54	44.96	6,843.6	1,297.3	1,295.6	1,833.5	3.00	-3.00	
7,200.0	3.54	44.96	6,943.2	1,303.5	1,301.8	1,842.2	3.00	-3.00	
7,300.0	0.54	44.96	7,043.1	1,306.1	1,304.3	1,845.8	3.00	-3.00	
7,317.9	0.00	0.00	7,061.0	1,306.1	1,304.3	1,845.9	3.00	-3.00	Start 2088.0 hold at 7317.9 MD - TOP_GAS.ME
7,400.0	0.00	0.00	7,143.1	1,306.1	1,304.3	1,845.9	0.00	0.00	
7,500.0	0.00	0.00	7,243.1	1,306.1	1,304.3	1,845.9	0.00	0.00	
7,600.0	0.00	0.00	7,343.1	1,306.1	1,304.3	1,845.9	0.00	0.00	
7,700.0	0.00	0.00	7,443.1	1,306.1	1,304.3	1,845.9	0.00	0.00	
7,800.0	0.00	0.00	7,543.1	1,306.1	1,304.3	1,845.9	0.00	0.00	
7,900.0	0.00	0.00	7,643.1	1,306.1	1,304.3	1,845.9	0.00	0.00	
8,000.0	0.00	0.00	7,743.1	1,306.1	1,304.3	1,845.9	0.00	0.00	
8,100.0	0.00	0.00	7,843.1	1,306.1	1,304.3	1,845.9	0.00	0.00	
8,200.0	0.00	0.00	7,943.1	1,306.1	1,304.3	1,845.9	0.00	0.00	
8,300.0	0.00	0.00	8,043.1	1,306.1	1,304.3	1,845.9	0.00	0.00	
8,400.0	0.00	0.00	8,143.1	1,306.1	1,304.3	1,845.9	0.00	0.00	
8,500.0	0.00	0.00	8,243.1	1,306.1	1,304.3	1,845.9	0.00	0.00	
8,600.0	0.00	0.00	8,343.1	1,306.1	1,304.3	1,845.9	0.00	0.00	
8,700.0	0.00	0.00	8,443.1	1,306.1	1,304.3	1,845.9	0.00	0.00	
8,800.0	0.00	0.00	8,543.1	1,306.1	1,304.3	1,845.9	0.00	0.00	
8,900.0	0.00	0.00	8,643.1	1,306.1	1,304.3	1,845.9	0.00	0.00	
9,000.0	0.00	0.00	8,743.1	1,306.1	1,304.3	1,845.9	0.00	0.00	
9,005.9	0.00	0.00	8,749.0	1,306.1	1,304.3	1,845.9	0.00	0.00	CAMEO.MBL (TVD)
9,100.0	0.00	0.00	8,843.1	1,306.1	1,304.3	1,845.9	0.00	0.00	
9,200.0	0.00	0.00	8,943.1	1,306.1	1,304.3	1,845.9	0.00	0.00	
9,255.9	0.00	0.00	8,999.0	1,306.1	1,304.3	1,845.9	0.00	0.00	ROLLINS.MBL (TVD)
9,300.0	0.00	0.00	9,043.1	1,306.1	1,304.3	1,845.9	0.00	0.00	
9,400.0	0.00	0.00	9,143.1	1,306.1	1,304.3	1,845.9	0.00	0.00	
9,405.9	0.00	0.00	9,149.0	1,306.1	1,304.3	1,845.9	0.00	0.00	TD at 9405.9 - TD.MBL (TVD)

Planning Report

Database:	USA EDM 5000 Multi Users DB	Local Co-ordinate Reference:	Well PUCKETT 13B-19
Company:	Caerus Oil & Gas	TVD Reference:	30' KB @ 8181.0usft
Project:	Garfield County, CO (UTM 12N)	MD Reference:	30' KB @ 8181.0usft
Site:	S24-T6N-R97W (MESA P24)	North Reference:	True
Well:	PUCKETT 13B-19	Survey Calculation Method:	Minimum Curvature
Wellbore:	OH		
Design:	PLAN #1		

Targets									
Target Name	Dip Angle	Dip Dir.	TVD	+N/-S	+E/-W	Northing	Easting	Latitude	Longitude
- hit/miss target	(°)	(°)	(usft)	(usft)	(usft)	(usft)	(usft)		
- Shape									
PUCKETT 13B-19 PBHL	0.00	0.00	9,149.0	1,306.1	1,304.3	14,359,050.30	2,442,523.90	39.506584	-108.156514
- plan hits target center									
- Circle (radius 50.0)									

Formations						
Measured Depth	Vertical Depth	Name	Lithology	Dip	Dip Direction	
(usft)	(usft)			(°)	(°)	
6,150.5	5,926.0	OHIO_CREEK.MBL (TVD)				
6,453.7	6,217.0	WILLIAMS_FORK.MBL (TVD)				
7,317.9	7,061.0	TOP_GAS.MBL (TVD)				
9,005.9	8,749.0	CAMEO.MBL (TVD)				
9,255.9	8,999.0	ROLLINS.MBL (TVD)				
9,405.9	9,149.0	TD.MBL (TVD)				

Plan Annotations					
Measured Depth	Vertical Depth	Local Coordinates			
(usft)	(usft)	+N/-S	+E/-W	Comment	
(usft)	(usft)	(usft)	(usft)		
200.0	200.0	0.0	0.0	Start Build 3.00	
743.2	735.9	54.3	54.2	Start 6031.5 hold at 743.2 MD	
6,774.7	6,525.1	1,251.8	1,250.1	Start Drop -3.00	
7,317.9	7,061.0	1,306.1	1,304.3	Start 2088.0 hold at 7317.9 MD	
9,405.9	9,149.0	1,306.1	1,304.3	TD at 9405.9	