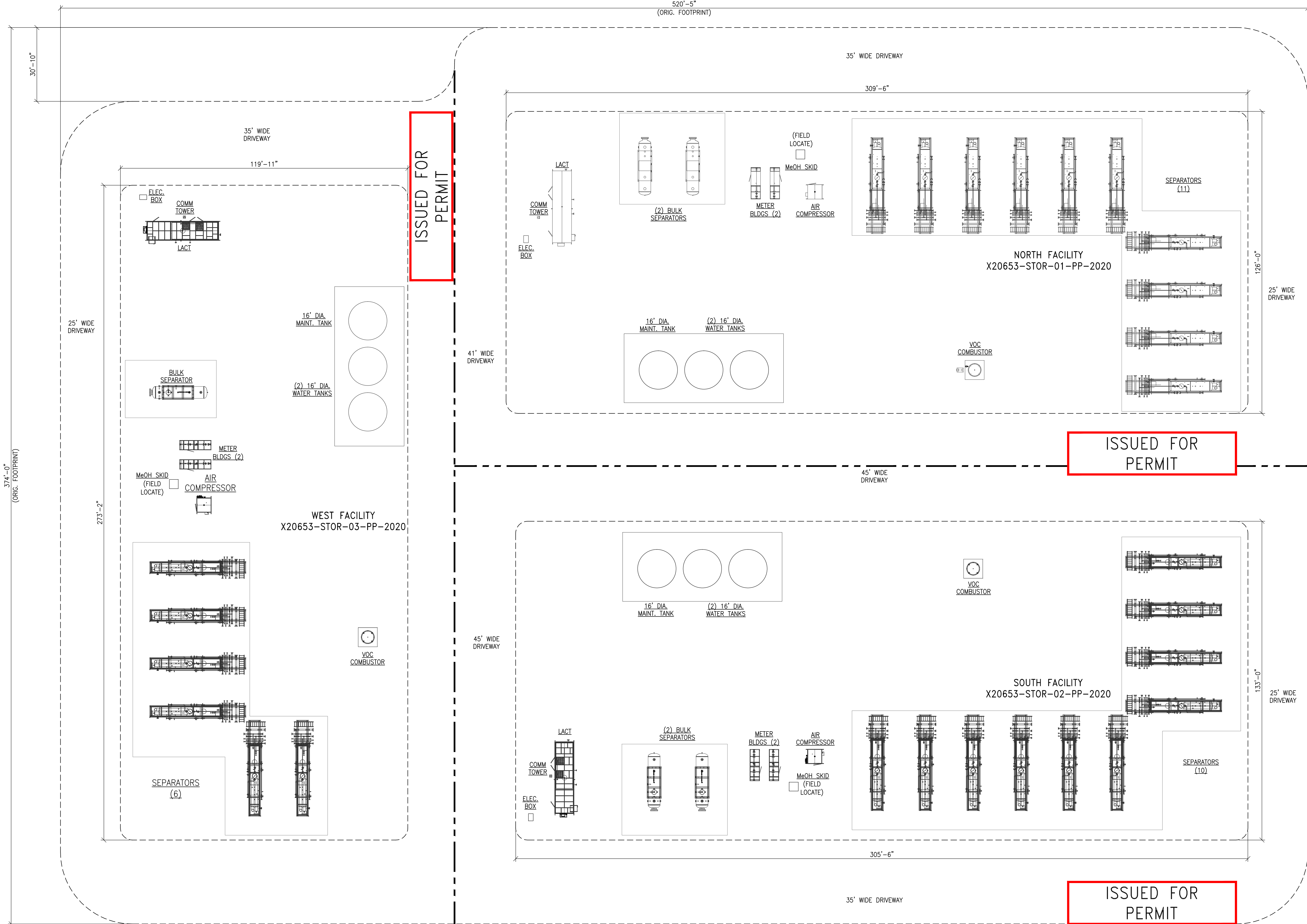


THIS DRAWING AND THE DESIGN IT COVERS ARE CONFIDENTIAL AND REMAIN THE PROPERTY OF ANADARKO PETROLEUM CORPORATION AND SHALL NOT BE DISCLOSED TO OTHERS OR REPRODUCED IN ANY MANNER OR USED FOR ANY PURPOSE WHATSOEVER EXCEPT BY WRITTEN PERMISSION BY THE OWNER.



NOTES:

REFERENCE DRAWINGS		REVISIONS					
DWG. NO.	TITLE	NO.	DESCRIPTION	BY	CHK.	DATE	DATE
		2	ISSUED FOR PERMIT	JBM	2/15/16	RWG	2/15/16
		1	ISSUED FOR PERMIT	WVG	12/11/15	RWG	12/11/15
		0	ISSUED FOR PERMIT	CBG	9/21/15	RWG	9/21/15

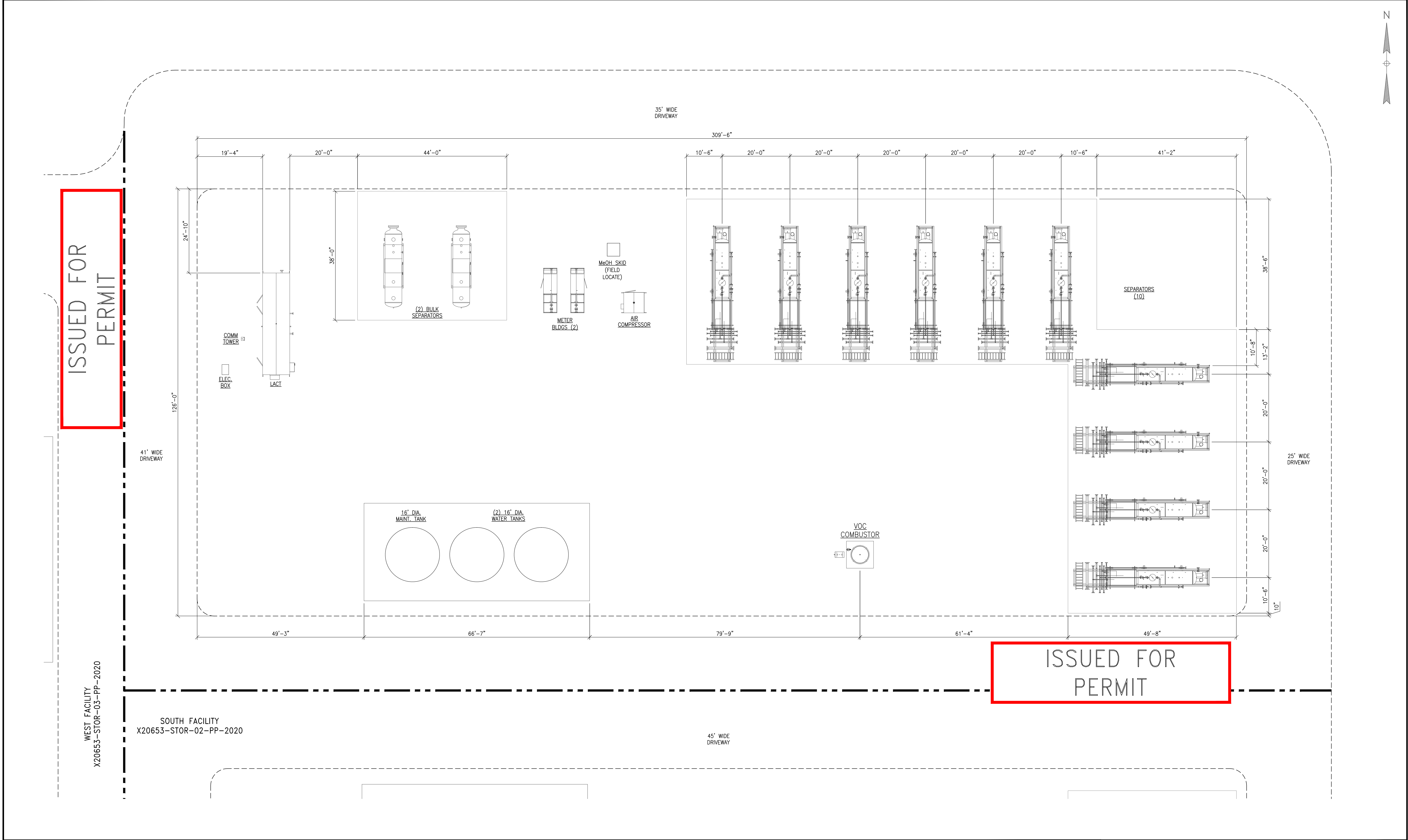



BBKB

PERMIT PLOT PLAN
PRODUCTION FACILITY
KEY PLAN W/ OVERALL DIMENSIONS

DRAWN BY: RWG	CREATION DATE: 8/21/15	A/E No.:-
APPROVED: JTK	APPR. DATE:	
	DWG. No.:	
SCALE: 1"=20'	X20653-STOR-00-PP-2020	SHEET No. 1 OF 4

THIS DRAWING AND THE DESIGN IT COVERS ARE CONFIDENTIAL AND REMAIN THE PROPERTY OF ANADARKO PETROLEUM CORPORATION AND SHALL NOT BE DISCLOSED TO OTHERS OR REPRODUCED IN ANY MANNER OR USED FOR ANY PURPOSE WHATSOEVER EXCEPT BY WRITTEN PERMISSION BY THE OWNER.



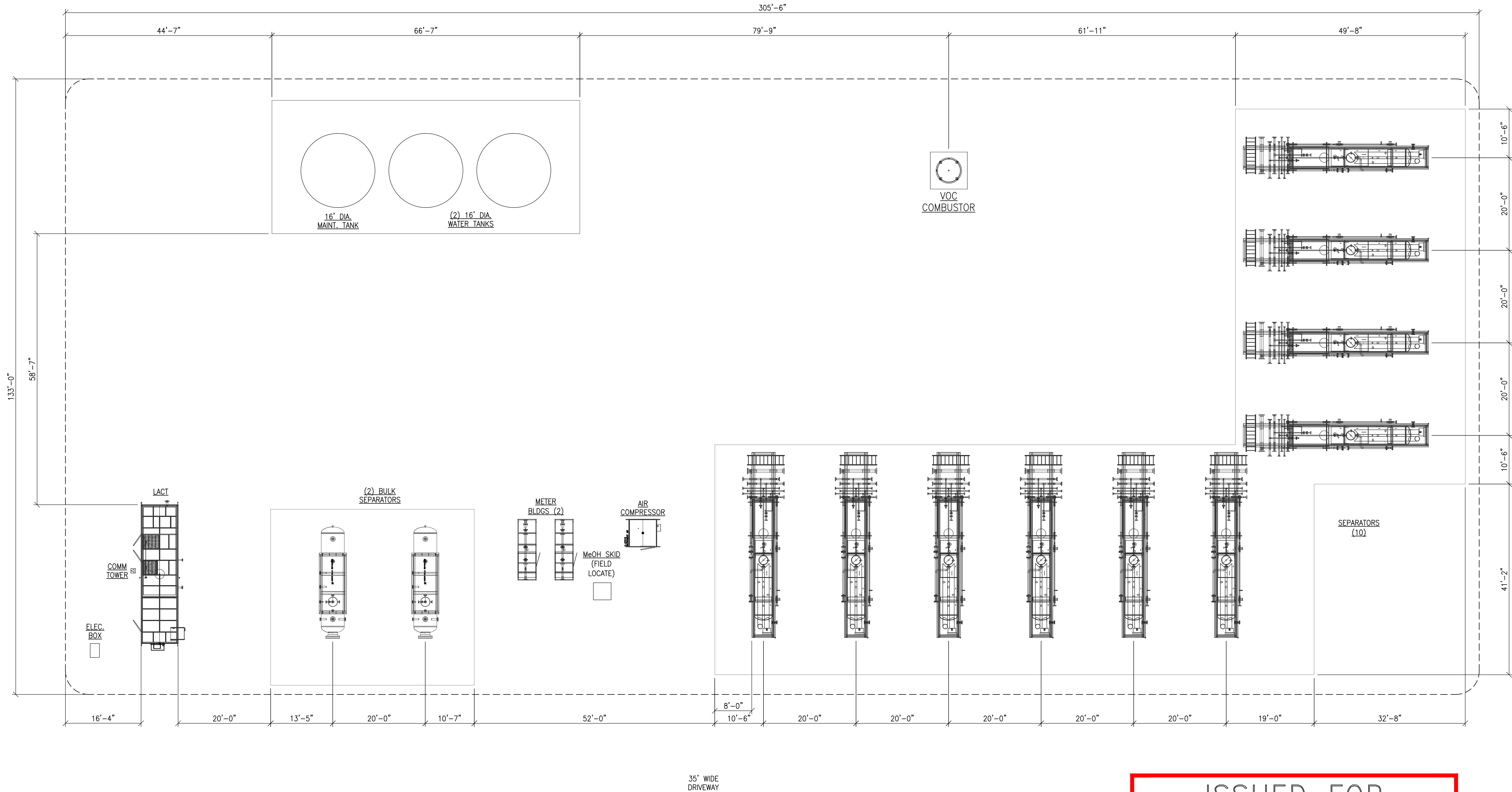
NOTES:	REFERENCE DRAWINGS		REVISIONS						<div><div>BBKB</div></div>		PERMIT PLOT PLAN				
											NORTH PRODUCTION FACILITY				
											W/ EQUIPMENT LOCATIONS				
									DRAWN BY: RWG		CREATION DATE: 8/21/15		AFE No.: -		
									APPROVED: JTK		APPR. DATE:				
											DWG. No.:		SHEET No.		
											X20653-STOR-01-PP-2020		2 OF 4		
											SCALE: 1"=12'-0"		2		
	DWG. NO.		TITLE		NO.		DESCRIPTION		BY		CHK.		DATE		DATE

THIS DRAWING AND THE DESIGN IT COVERS ARE CONFIDENTIAL AND REMAIN THE PROPERTY OF ANADARKO PETROLEUM CORPORATION AND SHALL NOT BE DISCLOSED TO OTHERS OR REPRODUCED IN ANY MANNER OR USED FOR ANY PURPOSE WHATSOEVER EXCEPT BY WRITTEN PERMISSION BY THE OWNER.

WEST FACILITY
X20653-STOR-03-PP-2020

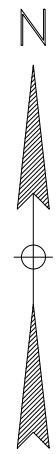
NORTH FACILITY
X20653-STOR-01-PP-2020

45' WIDE
DRIVEWAY



45' WIDE
DRIVEWAY

25' WIDE
DRIVEWAY



NOTES:

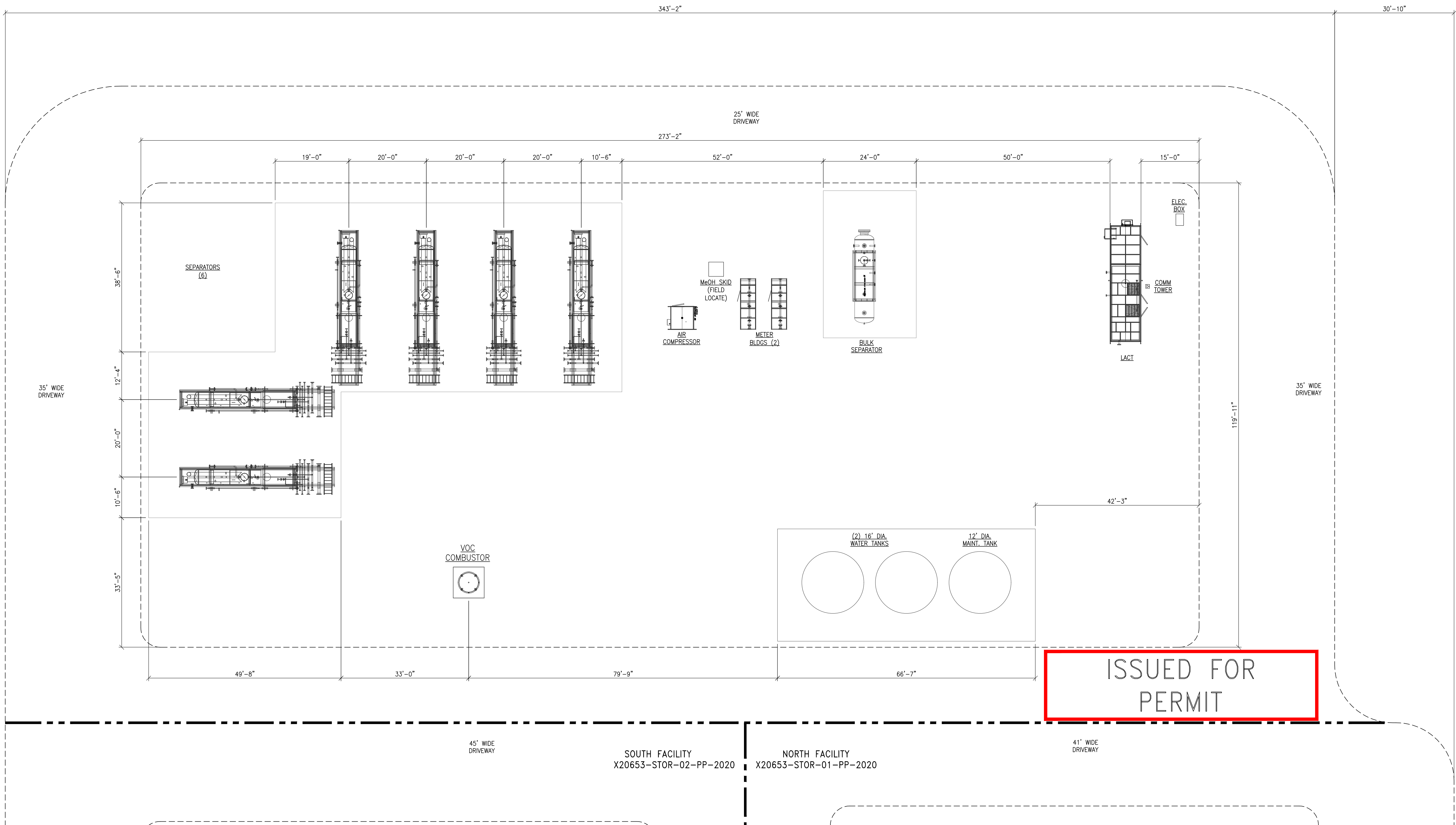
REFERENCE DRAWINGS		REVISIONS					
		2	ISSUED FOR PERMIT	JBM	2/15/16	RWG	2/15/16
		1	ISSUED FOR PERMIT	WVG	12/11/15	RWG	12/11/15
		0	ISSUED FOR PERMIT	CBG	9/21/15	RWG	9/21/15
DWG. NO.	TITLE	NO.	DESCRIPTION	BY	DATE	CHK.	DATE



BBKB

PERMIT PLOT PLAN SOUTH PRODUCTION FACILITY W/ EQUIPMENT LOCATIONS			
DRAWN BY: RWG	CREATION DATE: 8/21/15	AFE No.: -	
APPROVED: JTK	APPR. DATE:		
	DWG. No.:		
SCALE: 1"=12'-0"	X20653-STOR-02-PP-2020		SHEET No. 3 OF 4

THIS DRAWING AND THE DESIGN IT COVERS ARE CONFIDENTIAL AND REMAIN THE PROPERTY OF ANADARKO PETROLEUM CORPORATION AND SHALL NOT BE DISCLOSED TO OTHERS OR REPRODUCED IN ANY MANNER OR USED FOR ANY PURPOSE WHATSOEVER EXCEPT BY WRITTEN PERMISSION BY THE OWNER.



NOTES:

REFERENCE DRAWINGS		REVISIONS					
DWG. NO.	TITLE	NO.	DESCRIPTION	BY	CHK.	APPR.	DATE
		2	ISSUED FOR PERMIT	JBM	2/15/16	RWG	2/15/16
		1	ISSUED FOR PERMIT	WVG	12/11/15	RWG	12/11/15
		0	ISSUED FOR PERMIT	CBG	9/21/15	RWG	9/21/15



BBKB

PERMIT PLOT PLAN WEST PRODUCTION FACILITY W/ EQUIPMENT LOCATIONS			
DRAWN BY: JBM	CREATION DATE: 8/21/15	AFE No.: -	
APPROVED: JTK	APPR. DATE:		
	DWG. No.:		
SCALE: 1"=12'-0"	X20653-STOR-03-PP-2020		SHEET No. 4 OF 4