

Final Reclamation Inspection

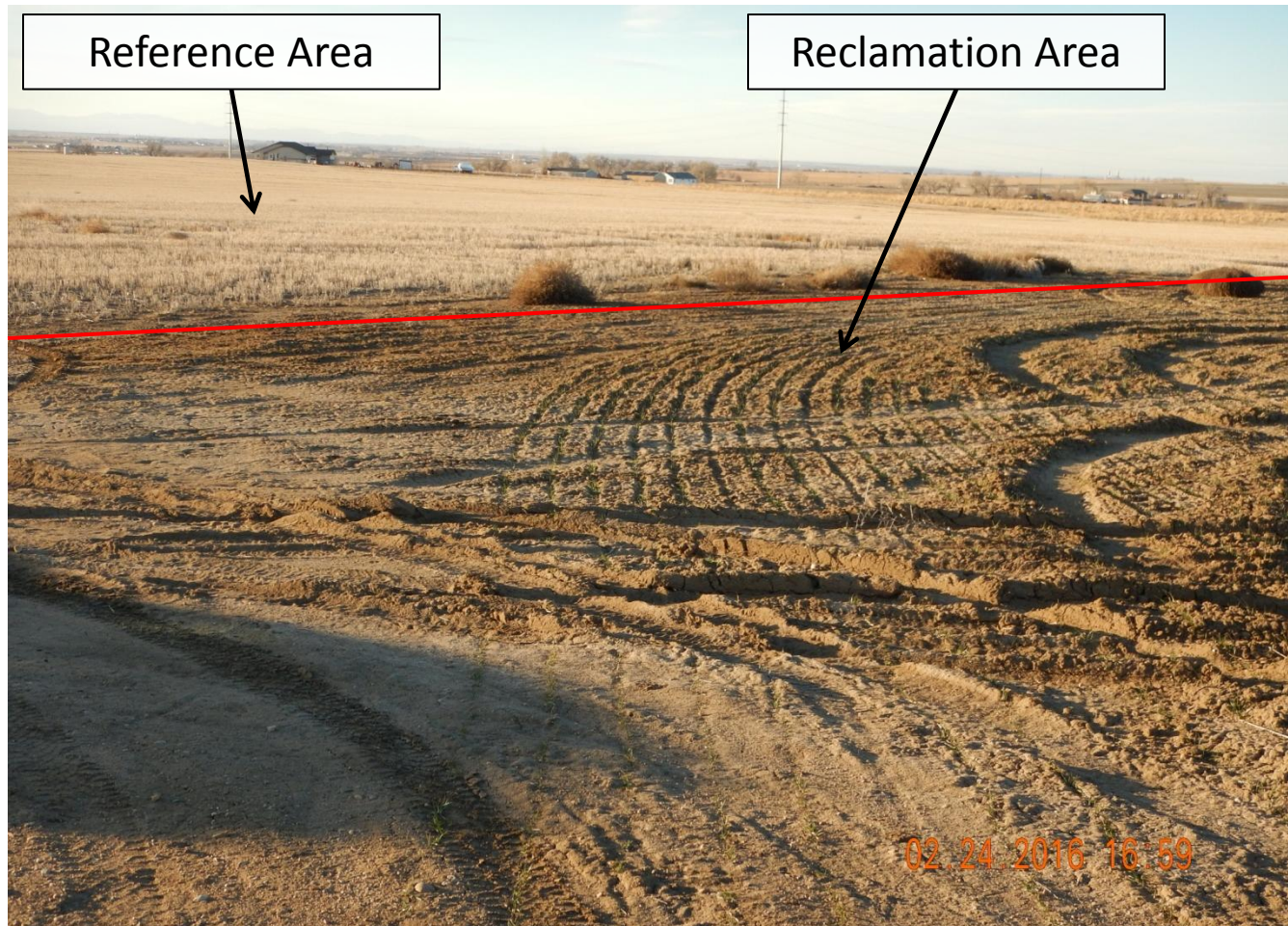


Photo 1. Photo taken from northern location, facing Northwest. Reclamation area has been seeded but vegetative growth in process. Area will be reinspected next growing season to determine successful vegetative growth comparable to the reference area. Vehicle traffic on reclamation area is negatively affecting vegetative growth.

Final Reclamation Inspection



Photo 2. Photo taken from northern location, facing North. Reclamation area has been seeded but vegetative growth in process. Area will be reinspected next growing season to determine successful vegetative growth comparable to the reference area. Vehicle traffic on reclamation area is negatively affecting vegetative growth.

Final Reclamation Inspection

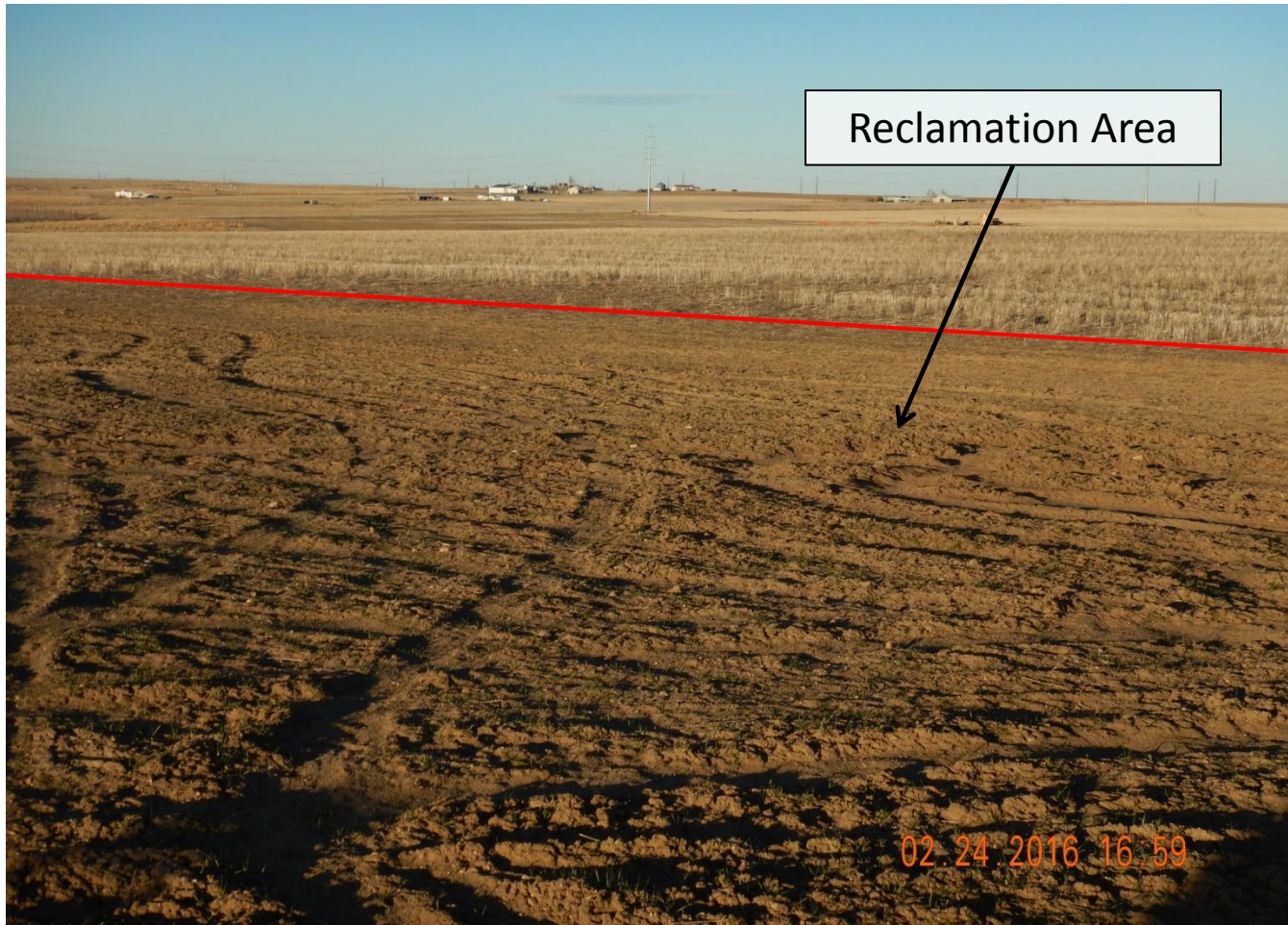


Photo 3. Photo taken from north location, facing Northeast. Reclamation area has been seeded but vegetative growth in process. Area will be reinspected next growing season to determine successful vegetative growth comparable to the reference area. Vehicle traffic on reclamation area is negatively affecting vegetative growth.

Final Reclamation Inspection



Photo 4. Photo taken from north location, facing East. Reclamation area has been seeded but vegetative growth in process. Area will be reinspected next growing season to determine successful vegetative growth comparable to the reference area. Vehicle traffic on reclamation area is negatively affecting vegetative growth.

Final Reclamation Inspection



Photo 5. Photo taken from southern location, facing South. Reclamation area has been seeded but vegetative growth in process. Area will be reinspected next growing season to determine successful vegetative growth comparable to the reference area. Vehicle traffic on reclamation area is negatively affecting vegetative growth.

Final Reclamation Inspection



Photo 6. Photo taken from reclamation area indicating seeding attempt. Final reclamation area in process.