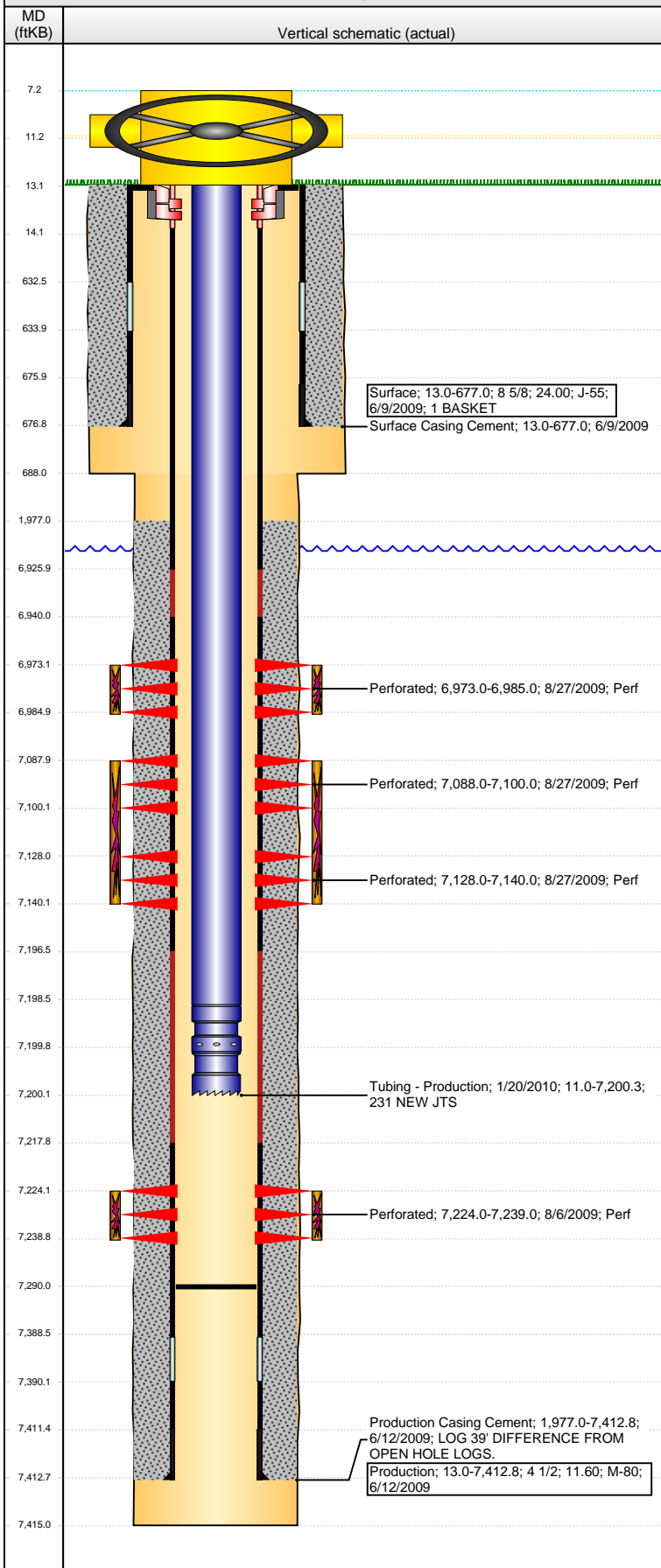


Well Name: HARSH H26-23D

DEVIATED - ORIGINAL HOLE, 3/2/2016 11:47:54 AM



Well Header

API	Business Unit	District	Well Config
05-123-29678	DJ BASIN	15	DEVIATED
Original KB Elevation (ft)	KB - GL / MSL (ftKB)	Spud Date	P & A Date
4,870.00	13.00	6/9/2009	

Comment

Directions To Well

CR 30 & CR 47, SOUTH .5 MILE, WEST .3 MILE, SOUTHWEST .1 MILE INTO

Congressional Location

Quarter 1	Quarter 2	Quarter 3	Quarter 4	Section	Township	Twtnshp N...	Range	Rng E/W Dir
		NW	SE	26	3	N	65	W

Bottom Hole Location

North-South Distance (ft)	From N or S Line	East-West Distance (ft)	From E or W Line
1,355.0	S	1,225.0	E

Plug Back Total Depths

Date	Depth (ftKB)	Method	Com
6/12/2009	7,388.0	CASING TALLY	
1/19/2010	7,290.0	TUBING TALLY	REMAINDER OF BJ PYTHON PLUG. SUGGEST B...

Wellbore Sections

Section Des	Size (in)	Act Top, MD (ftKB)	Act Btm, MD (ftKB)
SURFACE	12 1/4	13.0	688.0
PRODUCTION	7 7/8	688.0	7,415.0

Zone Statuses

Zone Name	Status Date	Status	Fluid Type	Job	Prod Method
NIOBRARA	8/29/2009	PR		DRILLING/CO...	
CODELL	8/29/2009	PR		DRILLING/CO...	

Casing Strings

Surface, 677.0ftKB

Casing Description	Run Date	OD (in)	Wt/Len (l...	Grade	Top, MD (ft...	MD (ftKB)
Surface	6/9/2009	8 5/8	24.00	J-55	13.0	677.0

Production, 7,412.8ftKB

Casing Description	Run Date	OD (in)	Wt/Len (l...	Grade	Top, MD (ft...	MD (ftKB)
Production	6/12/2009	4 1/2	11.60	M-80	13.0	7,412.8

Cement

Description	Top Depth (ftKB)	Bottom Depth (ftKB)
Surface Casing Cement	13.0	677.0
Description	Top Depth (ftKB)	Bottom Depth (ftKB)
Production Casing Cement	1,977.0	7,412.8

Tubing Strings

Tubing Description	Run Date	String...	ID (in)	Wt (lb/ft)	Grade	Len (ft)	Set De...
Tubing - Production	1/20/2010	2 3/8	1.995	4.70	J-55	7,189.29	7,088.3

Tubing Components

Item Des	OD (in)	Wt (lb/ft)	Grade	Jts	Len (ft)	Btm (ftKB)	Btm (TVD) (ftKB)
Tubing	2 3/8	4.70	J-55	231	7,187.64	7,198.6	
Seating Nipple	2 3/8	5.40	J-55	1	1.20	7,199.8	7,087.9
Notched collar	2 3/8		J-55	1	0.45	7,200.3	7,088.3

Perforation Data

Zone	Bnch/St g	Entered Shot Total	Top (ftKB)	Btm (ftKB)	Date
NIOBRARA, ORIGINAL HOLE	B	24	6,973.00	6,985.00	8/27/2009
NIOBRARA, ORIGINAL HOLE	C	24	7,088.00	7,100.00	8/27/2009
NIOBRARA, ORIGINAL HOLE	C MARL	24	7,128.00	7,140.00	8/27/2009
CODELL, ORIGINAL HOLE		60	7,224.00	7,239.00	8/6/2009

Stimulations & Treatments

Date	Zone	Primary Job Type
8/27/2009	CODELL, ORIGINAL HOLE	DRILLING/COMPLETION - ORIGINAL
Technical Result	Tech Result Details	Tech Result Note
Success	According to Plan	

Comment

(CODELL): REVERSE STEP RATE RESULTS: PO - 14. NWB FRIC - 167 PSI. PERF FRIC - 174 PSI. ISIP - 3227 PSI. TREATMENT WENT WELL. NOLTE FLAT. POST ISIP - 3475 PSI. AVG VISC - 28.8 CP. AVG TEMP 68.9F. AVG PH - 10.16.

Well Name: HARSH H26-23D

DEVIATED - ORIGINAL HOLE, 3/2/2016 11:47:55 AM

Stimulations & Treatments

Date 8/27/2009	Zone NIOBRARA, ORIGINAL HOLE	Primary Job Type DRILLING/COMPLETION - ORIGINAL
-------------------	---------------------------------	--

Technical Result Success	Tech Result Details According to Plan	Tech Result Note
-----------------------------	--	------------------

Comment
(NIOBRARA C): ISIP - 3485 PSI. TREATMENT WENT WELL. NOLTE FLAT. POST ISIP - 3463 PSI. AVG VISC - 24.3 CP. AVG TEMP - 72.5F. AVG PH - 10.16.

Date 8/27/2009	Zone NIOBRARA, ORIGINAL HOLE	Primary Job Type DRILLING/COMPLETION - ORIGINAL
-------------------	---------------------------------	--

Technical Result Success	Tech Result Details According to Plan	Tech Result Note
-----------------------------	--	------------------

Comment
(NIOBRARA B): ISIP - 3515 PSI. TREATMENT WENT WELL. NOLTE FLAT. POST ISIP - 3575 PSI. AVG VISC - 23.7 CP. AVG TEMP - 72.6F. AVG PH - 10.18.

Other In Hole

Run Date	Des	OD (in)	Top (ftKB)	Btm (ftKB)

Logs

Date	Type	Top, MD (ftKB)	Btm, MD (ftKB)
6/12/2009	SPECTRAL DENSITY/Pe/DSN NEUTRON/SP/ARRAY COMPENSATED TRUE RESISTIVITY/6 ARM CALIPER	688.0	7,418.0
6/12/2009	SPECTRAL GAMMA RAY	6,308.0	7,418.0
6/18/2009	CBL/CCL/GR	1,890.0	7,340.0
6/23/2009	CBL/CCL/GR	1,730.0	7,346.0

