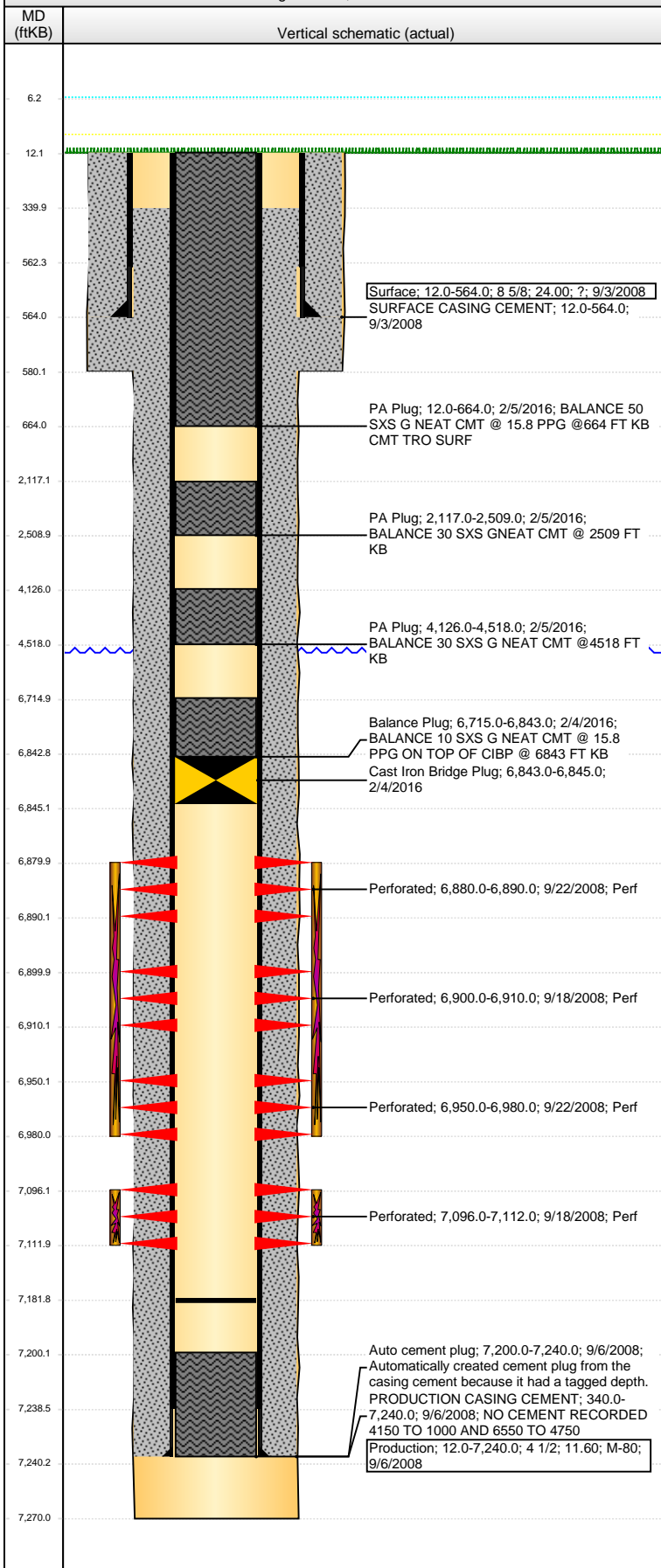


Well Name: BROOMFIELD 24-45

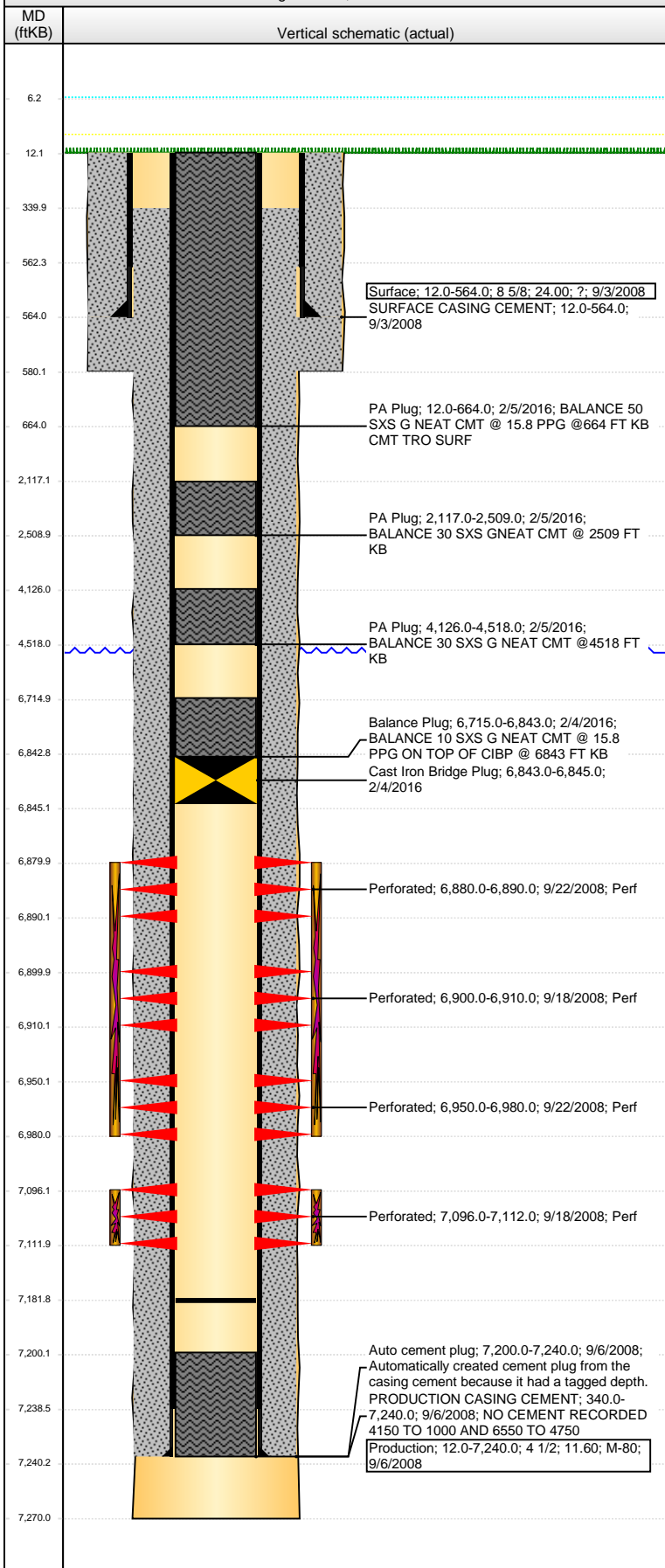
VERTICAL - Original Hole, 2/15/2016 9:34:36 AM



Well Header							
API	05-123-25652	Business Unit	DJ BASIN				
Original KB Elevation (ft)	4,826.00	KB - GL / MSL (ftKB)	12.00				
Spud Date	9/2/2008	District	15				
Well Config	VERTICAL						
P & A Date	2/4/2016						
Comment							
DISCREPANCY: DR RPT TD DATE 9/5/2008; ST RPT TD DATE 9/4/2008							
Directions To Well							
RD 44 & 49, S 6/10, W 1/10, S 1/10, W INTO.							
Congressional Location							
Quarter 1	Quarter 2	Quarter 3	Quarter 4				
		SE	SE				
Section	Township		Twonshp N...				
24	4 N		Range				
			65 W				
Bottom Hole Location							
North-South Distance (ft)	From N or S Line	East-West Distance (ft)	From E or W Line				
Plug Back Total Depths							
Date	Depth (ftKB)	Method	Com				
9/16/2008	7,200.0	CASED HOLE LOG	DEPTH LOGGER ON CBL				
11/23/2008	7,200.0	TAG	CLEAN OUT TO LAND TUBING				
1/7/2013	7,189.0	TAG					
2/28/2013	7,190.0	TAG					
10/21/2014	7,181.7	TAG	TAG 13' IN ON 4TH JT				
Wellbore Sections							
Section Des	Size (in)	Act Top, MD (ftKB)	Act Btm, MD (ftKB)				
SURFACE	12 1/4	12.0	580.0				
PRODUCTION	7 7/8	580.0	7,270.0				
Zone Statuses							
Zone Name	Status Date	Status	Fluid Type	Job	Prod Method		
CODELL	9/18/2008	PR		DRILLING/CO...			
CODELL	2/4/2016	P&A		ABANDON WE...			
NIOBRARA	9/22/2008	PR		DRILLING/CO...			
NIOBRARA	2/4/2016	P&A		ABANDON WE...			
Casing Strings							
Surface, 564.0ftKB							
Casing Description	Run Date	OD (in)	Wt/Len (l...)	Grade	Top, MD (ft...)	MD (ftKB)	
Surface	9/3/2008	8 5/8	24.00	?	12.0	564.0	
Production, 7,240.0ftKB							
Casing Description	Run Date	OD (in)	Wt/Len (l...)	Grade	Top, MD (ft...)	MD (ftKB)	
Production	9/6/2008	4 1/2	11.60	M-80	12.0	7,240.0	
Cement							
Description	Top Depth (ftKB)	Bottom Depth (ftKB)					
SURFACE CASING CEMENT	12.0	564.0					
PRODUCTION CASING CEMENT	340.0	7,240.0					
Balance Plug	6,715.0	6,843.0					
PA Plug	4,126.0	4,518.0					
PA Plug	2,117.0	2,509.0					
PA Plug	12.0	664.0					
Tubing Strings							
Tubing Description	Run Date	String...	ID (in)	Wt (lb/ft)	Grade	Len (ft)	Set De...
Tubing	11/25/2008	2 3/8	1.867			6,808.00	
Tubing - Production	1/8/2013	2 3/8	1.995	4.70	J-55	6,099.54	
Tubing - Production	2/28/2013	2 3/8	1.995	4.70	J-55	7,082.05	
Tubing - Production	10/23/2014	2 3/8	1.995	4.70	J-55	7,070.58	
Perforation Data							
Zone	Bnch/St g	Entered Shot Total	Top (ftKB)	Btm (ftKB)	Date		
NIOBRARA, Original Hole	A	20	6,880.00	6,890.00	9/22/2008		
NIOBRARA, Original Hole	A	20	6,900.00	6,910.00	9/18/2008		

Well Name: BROOMFIELD 24-45

VERTICAL - Original Hole, 2/15/2016 9:34:36 AM



Perforation Data					
Zone	Bnch/St g	Entered Shot Total	Top (ftKB)	Btm (ftKB)	Date
NIOBRARA, Original Hole	C	120	6,950.00	6,980.00	9/22/2008
CODELL, Original Hole		64	7,096.00	7,112.00	9/18/2008

Stimulations & Treatments		
Date	Zone	Primary Job Type
9/18/2008	CODELL, Original Hole	DRILLING/COMPLETION - ORIGINAL
Technical Result		Tech Result Note
Comment		

Date	Zone	Primary Job Type
9/18/2008	NIOBRARA, Original Hole	DRILLING/COMPLETION - ORIGINAL
Technical Result		Tech Result Note
Comment		

Other In Hole				
Run Date	Des	OD (in)	Top (ftKB)	Btm (ftKB)
2/4/2016	Cast Iron Bridge Plug	3.99	6,843.0	6,845.0

Logs			
Date	Type	Top, MD (ftKB)	Btm, MD (ftKB)
9/5/2008	COMPENSATED DENSITY	3,650.0	7,250.0
9/5/2008	INDUCTION	564.0	7,270.0
9/16/2008	CEMENT BOND	200.0	6,550.0
9/16/2008	CEMENT BOND	1,000.0	7,198.0