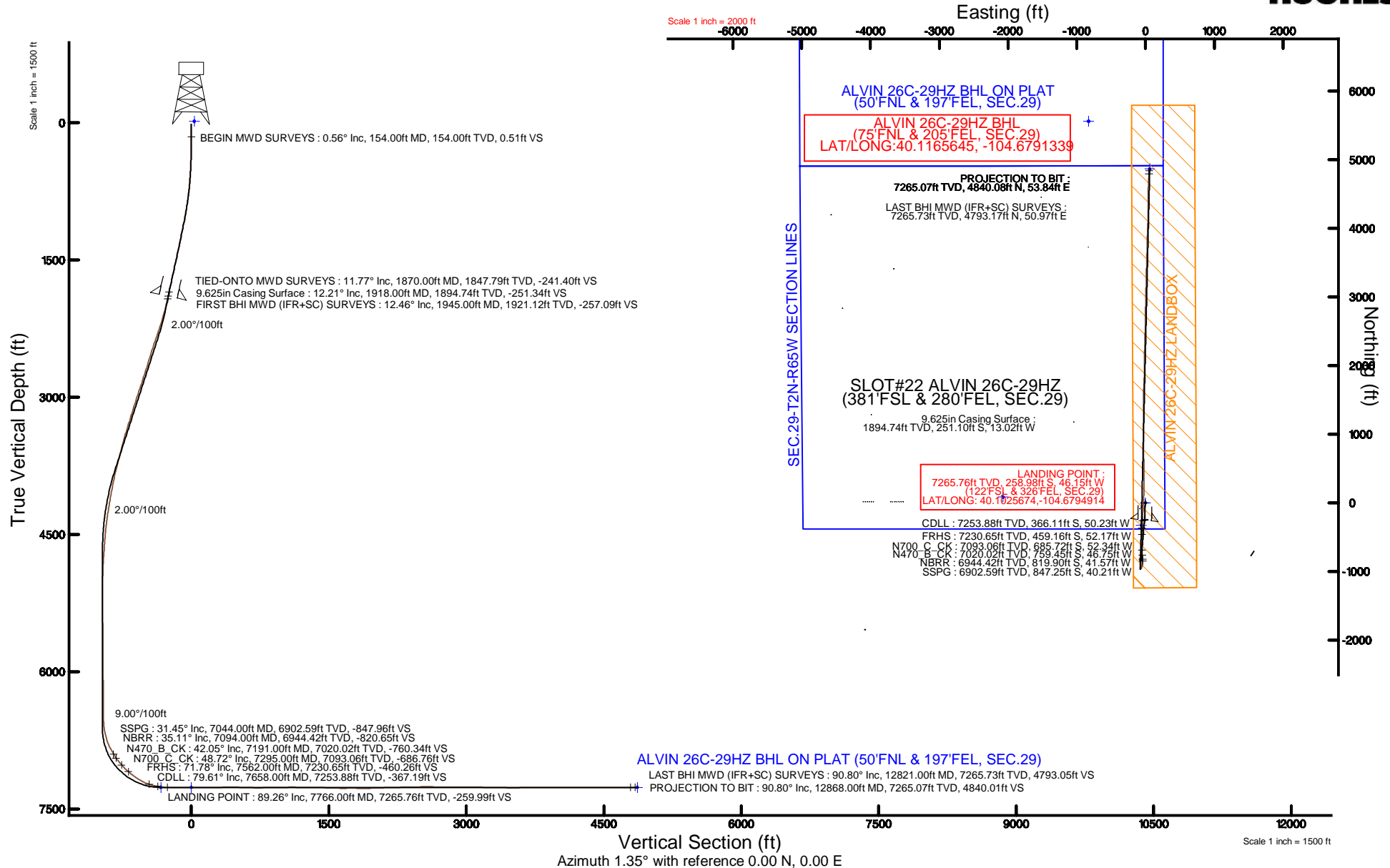


KERR-MCGEE OIL & GAS ONSHORE LP (WA)

Location: COLORADO Slot: SLOT#22 ALVIN 26C-29HZ (381'FSL & 280'FEL, SEC.29)
 Field: WELD COUNTY (UTM/TRUE NORTH) Well: ALVIN 26C-29HZ
 Facility: SEC.29-T2N-R65W Wellbore: ALVIN 26C-29HZ PWB

Plot reference wellpath is ALVIN 26C-29HZ PWP (REV-B.1)

True vertical depths are referenced to XTREME 24 (16'KB) (RKB)	Grid System: NAD83 / UTM Zone 13 North, US feet
Measured depths are referenced to XTREME 24 (16'KB) (RKB)	North Reference: True north
XTREME 24 (16'KB) (RKB) to Mean Sea Level: 4925 feet	Scale: True distance
Mean Sea Level to Mud line (At Slot: SLOT#22 ALVIN 26C-29HZ (381'FSL & 280'FEL, SEC.29)): 0 feet	Depths are in feet
Coordinates are in feet referenced to Slot	Created by: amarc on 07/Jan/2016



REFERENCE WELLPATH IDENTIFICATION

Operator	KERR-MCGEE OIL & GAS ONSHORE LP (WA)	Slot	SLOT#22 ALVIN 26C-29HZ (381'FSL & 280'FEL, SEC.29)
Area	COLORADO	Well	ALVIN 26C-29HZ
Field	WELD COUNTY (UTM/TRUE NORTH)	Wellbore	ALVIN 26C-29HZ AWB
Facility	SEC.29-T2N-R65W		

REPORT SETUP INFORMATION

Projection System	NAD83 / UTM Zone 13 North, US feet	Software System	WellArchitect® 4.0.0
North Reference	True	User	Amarcar
Scale	0.999609	Report Generated	07/Jan/2016 at 16:04
Convergence at slot	0.21° East	Database/Source file	WA_DEN_Anadarko_Defn/ALVIN_26C-29HZ_AWB.xml

WELLPATH LOCATION

	Local coordinates		Grid coordinates		Geographic coordinates	
	North[ft]	East[ft]	Easting[US ft]	Northing[US ft]	Latitude	Longitude
Slot Location	-15.11	3645.18	1730086.25	14564503.27	40°06'11.802"N	104°40'45.575"W
Facility Reference Pt			1726442.48	14564505.77	40°06'11.954"N	104°41'32.485"W
Field Reference Pt			1698235.31	14552047.82	40°04'09.600"N	104°47'36.000"W

WELLPATH DATUM

Calculation method	Minimum curvature	XTREME 24 (16'KB) (RKB) to Facility Vertical Datum	4925.00ft
Horizontal Reference Pt	Slot	XTREME 24 (16'KB) (RKB) to Mean Sea Level	4925.00ft
Vertical Reference Pt	XTREME 24 (16'KB) (RKB)	XTREME 24 (16'KB) (RKB) to Mud Line at Slot (SLOT#22 ALVIN 26C-29HZ (381'FSL & 280'FEL, SEC.29))	4925.00ft
MD Reference Pt	XTREME 24 (16'KB) (RKB)	Section Origin	N 0.00, E 0.00 ft
Field Vertical Reference	Mean Sea Level	Section Azimuth	1.35°

REFERENCE WELLPATH IDENTIFICATION

Operator	KERR-MCGEE OIL & GAS ONSHORE LP (WA)	Slot	SLOT#22 ALVIN 26C-29HZ (381'FSL & 280'FEL, SEC.29)
Area	COLORADO	Well	ALVIN 26C-29HZ
Field	WELD COUNTY (UTM/TRUE NORTH)	Wellbore	ALVIN 26C-29HZ AWB
Facility	SEC.29-T2N-R65W		

WELLPATH DATA (141 stations) † = interpolated/extrapolated station

MD [ft]	Inclination [°]	Azimuth [°]	TVD [ft]	Vert Sect [ft]	North [ft]	East [ft]	Latitude	Longitude	DLS [°/100ft]	Comments
0.00†	0.000	42.400	0.00	0.00	0.00	0.00	40°06'11.802"N	104°40'45.575"W	0.00	
16.00	0.000	42.400	16.00	0.00	0.00	0.00	40°06'11.802"N	104°40'45.575"W	0.00	
154.00	0.560	42.400	154.00	0.51	0.50	0.45	40°06'11.807"N	104°40'45.569"W	0.41	BEGIN MWD SURVEYS
245.00	0.650	137.640	244.99	0.47	0.44	1.10	40°06'11.806"N	104°40'45.561"W	0.98	
336.00	1.450	177.050	335.98	-1.05	-1.09	1.51	40°06'11.791"N	104°40'45.556"W	1.14	
426.00	2.340	193.400	425.93	-3.98	-4.01	1.14	40°06'11.762"N	104°40'45.560"W	1.15	
516.00	3.440	193.230	515.81	-8.42	-8.43	0.10	40°06'11.719"N	104°40'45.574"W	1.22	
606.00	4.040	195.620	605.62	-14.14	-14.11	-1.37	40°06'11.663"N	104°40'45.593"W	0.69	
696.00	5.550	187.820	695.31	-21.53	-21.47	-2.82	40°06'11.590"N	104°40'45.611"W	1.82	
786.00	6.840	188.940	784.78	-31.17	-31.08	-4.24	40°06'11.495"N	104°40'45.630"W	1.44	
876.00	8.500	186.720	873.97	-43.11	-42.98	-5.86	40°06'11.377"N	104°40'45.650"W	1.87	
966.00	9.440	184.650	962.87	-57.10	-56.94	-7.23	40°06'11.239"N	104°40'45.668"W	1.10	
1056.00	10.830	180.790	1051.46	-72.92	-72.76	-7.95	40°06'11.083"N	104°40'45.677"W	1.72	
1146.00	11.690	179.530	1139.73	-90.49	-90.33	-7.99	40°06'10.909"N	104°40'45.678"W	0.99	
1236.00	11.580	179.900	1227.88	-108.63	-108.48	-7.90	40°06'10.730"N	104°40'45.677"W	0.15	
1326.00	11.400	178.530	1316.08	-126.55	-126.40	-7.65	40°06'10.553"N	104°40'45.674"W	0.36	
1416.00	12.220	180.230	1404.17	-144.96	-144.82	-7.46	40°06'10.371"N	104°40'45.671"W	0.99	
1507.00	12.110	179.730	1493.13	-164.13	-164.00	-7.46	40°06'10.181"N	104°40'45.671"W	0.17	
1597.00	12.780	183.720	1581.01	-183.51	-183.37	-8.06	40°06'09.990"N	104°40'45.679"W	1.21	
1687.00	12.660	183.980	1668.81	-203.31	-203.14	-9.39	40°06'09.795"N	104°40'45.696"W	0.15	
1777.00	11.850	182.830	1756.75	-222.40	-222.21	-10.53	40°06'09.606"N	104°40'45.711"W	0.94	
1870.00	11.770	185.900	1847.79	-241.40	-241.18	-11.98	40°06'09.419"N	104°40'45.729"W	0.68	TIED-ONTO MWD SURVEYS
1945.00	12.460	186.190	1921.12	-257.09	-256.84	-13.64	40°06'09.264"N	104°40'45.750"W	0.92	FIRST BHI MWD (IFR+SC) SURVEYS
2039.00	14.300	188.230	2012.56	-278.72	-278.41	-16.39	40°06'09.051"N	104°40'45.786"W	2.02	
2134.00	16.150	188.930	2104.22	-303.46	-303.07	-20.12	40°06'08.807"N	104°40'45.834"W	1.96	
2229.00	17.700	188.390	2195.11	-330.89	-330.42	-24.28	40°06'08.537"N	104°40'45.887"W	1.64	
2323.00	19.240	186.250	2284.26	-360.51	-359.95	-28.05	40°06'08.245"N	104°40'45.936"W	1.79	
2418.00	18.640	185.060	2374.12	-391.26	-390.63	-31.09	40°06'07.942"N	104°40'45.975"W	0.75	
2513.00	18.050	183.650	2464.29	-421.11	-420.44	-33.37	40°06'07.647"N	104°40'46.004"W	0.78	
2608.00	17.210	182.580	2554.83	-449.87	-449.17	-34.94	40°06'07.363"N	104°40'46.025"W	0.95	
2702.00	17.190	184.750	2644.62	-477.64	-476.91	-36.72	40°06'07.089"N	104°40'46.047"W	0.68	
2797.00	18.310	186.740	2735.10	-506.51	-505.72	-39.63	40°06'06.804"N	104°40'46.085"W	1.34	
2892.00	17.370	186.150	2825.53	-535.50	-534.64	-42.90	40°06'06.519"N	104°40'46.127"W	1.01	
2987.00	18.880	188.620	2915.82	-564.88	-563.93	-46.72	40°06'06.229"N	104°40'46.176"W	1.78	
3081.00	18.290	188.490	3004.92	-594.60	-593.56	-51.18	40°06'05.936"N	104°40'46.234"W	0.63	
3176.00	17.200	187.540	3095.39	-623.35	-622.23	-55.23	40°06'05.653"N	104°40'46.286"W	1.19	
3270.00	17.850	185.630	3185.03	-651.54	-650.35	-58.46	40°06'05.375"N	104°40'46.327"W	0.92	
3365.00	16.780	186.620	3275.73	-679.71	-678.46	-61.47	40°06'05.097"N	104°40'46.366"W	1.17	
3459.00	17.070	187.600	3365.65	-706.94	-705.61	-64.86	40°06'04.829"N	104°40'46.410"W	0.43	
3554.00	15.110	187.610	3456.93	-733.11	-731.71	-68.35	40°06'04.571"N	104°40'46.455"W	2.06	
3649.00	15.550	188.190	3548.55	-758.06	-756.58	-71.80	40°06'04.325"N	104°40'46.499"W	0.49	
3743.00	13.570	187.240	3639.52	-781.54	-780.00	-74.98	40°06'04.094"N	104°40'46.540"W	2.12	
3838.00	15.110	187.160	3731.56	-804.95	-803.34	-77.93	40°06'03.863"N	104°40'46.578"W	1.62	
3932.00	12.980	179.880	3822.75	-827.70	-826.06	-79.44	40°06'03.639"N	104°40'46.597"W	2.94	
4027.00	11.840	172.450	3915.54	-847.99	-846.39	-78.13	40°06'03.438"N	104°40'46.580"W	2.06	

REFERENCE WELLPATH IDENTIFICATION

Operator	KERR-MCGEE OIL & GAS ONSHORE LP (WA)	Slot	SLOT#22 ALVIN 26C-29HZ (381'FSL & 280'FEL, SEC.29)
Area	COLORADO	Well	ALVIN 26C-29HZ
Field	WELD COUNTY (UTM/TRUE NORTH)	Wellbore	ALVIN 26C-29HZ AWB
Facility	SEC.29-T2N-R65W		

WELLPATH DATA (141 stations) † = interpolated/extrapolated station

MD [ft]	Inclination [°]	Azimuth [°]	TVD [ft]	Vert Sect [ft]	North [ft]	East [ft]	Latitude	Longitude	DLS [°/100ft]	Comments
4122.00	10.600	177.850	4008.72	-866.34	-864.78	-76.53	40°06'03.256"N	104°40'46.560"W	1.71	
4217.00	9.960	177.600	4102.20	-883.26	-881.72	-75.85	40°06'03.089"N	104°40'46.551"W	0.68	
4311.00	9.560	177.120	4194.84	-899.16	-897.64	-75.12	40°06'02.931"N	104°40'46.542"W	0.43	
4406.00	8.170	173.600	4288.70	-913.72	-912.23	-73.97	40°06'02.787"N	104°40'46.527"W	1.57	
4501.00	7.010	170.520	4382.87	-926.10	-924.66	-72.27	40°06'02.664"N	104°40'46.505"W	1.29	
4595.00	5.260	185.530	4476.33	-936.03	-934.60	-71.74	40°06'02.566"N	104°40'46.498"W	2.51	
4690.00	4.520	183.670	4570.98	-944.12	-942.68	-72.39	40°06'02.486"N	104°40'46.507"W	0.80	
4785.00	4.110	182.550	4665.72	-951.26	-949.81	-72.79	40°06'02.416"N	104°40'46.512"W	0.44	
4880.00	3.850	184.150	4760.49	-957.85	-956.39	-73.17	40°06'02.351"N	104°40'46.517"W	0.30	
4974.00	2.790	184.800	4854.33	-963.28	-961.82	-73.59	40°06'02.297"N	104°40'46.522"W	1.13	
5069.00	1.830	186.500	4949.25	-967.10	-965.63	-73.95	40°06'02.259"N	104°40'46.527"W	1.01	
5164.00	0.810	204.370	5044.22	-969.23	-967.75	-74.40	40°06'02.239"N	104°40'46.532"W	1.15	
5258.00	0.560	302.660	5138.22	-969.60	-968.11	-75.06	40°06'02.235"N	104°40'46.541"W	1.12	
5448.00	0.500	359.760	5328.21	-968.29	-966.78	-75.85	40°06'02.248"N	104°40'46.551"W	0.27	
5637.00	0.480	12.170	5517.20	-966.69	-965.18	-75.68	40°06'02.264"N	104°40'46.549"W	0.06	
5826.00	0.770	41.590	5706.19	-964.94	-963.46	-74.67	40°06'02.281"N	104°40'46.536"W	0.22	
5920.00	0.630	52.960	5800.19	-964.14	-962.67	-73.84	40°06'02.289"N	104°40'46.525"W	0.21	
6015.00	0.530	44.800	5895.18	-963.50	-962.05	-73.12	40°06'02.295"N	104°40'46.516"W	0.14	
6204.00	1.090	68.830	6084.16	-962.18	-960.78	-70.82	40°06'02.307"N	104°40'46.486"W	0.34	
6299.00	1.400	71.620	6179.14	-961.44	-960.08	-68.88	40°06'02.314"N	104°40'46.461"W	0.33	
6488.00	1.110	67.940	6368.09	-959.93	-958.67	-64.99	40°06'02.328"N	104°40'46.411"W	0.16	
6583.00	0.980	79.010	6463.08	-959.39	-958.17	-63.34	40°06'02.333"N	104°40'46.390"W	0.25	
6678.00	3.140	31.960	6558.02	-956.98	-955.81	-61.17	40°06'02.357"N	104°40'46.362"W	2.71	
6772.00	12.140	19.420	6651.09	-945.34	-944.28	-56.51	40°06'02.471"N	104°40'46.302"W	9.68	
6867.00	17.760	23.340	6742.84	-922.39	-921.53	-47.44	40°06'02.695"N	104°40'46.185"W	6.01	
6962.00	26.520	3.100	6830.87	-887.64	-886.93	-40.53	40°06'03.037"N	104°40'46.097"W	12.11	
7044.00†	31.446	358.210	6902.59	-847.96	-847.25	-40.21	40°06'03.429"N	104°40'46.092"W	6.66	SSPG
7056.00	32.180	357.610	6912.79	-841.64	-840.92	-40.44	40°06'03.492"N	104°40'46.095"W	6.66	
7094.00†	35.111	356.262	6944.42	-820.65	-819.90	-41.57	40°06'03.700"N	104°40'46.110"W	7.96	NBRR
7151.00	39.530	354.570	6989.74	-786.30	-785.47	-44.36	40°06'04.040"N	104°40'46.146"W	7.96	
7191.00†	42.051	354.925	7020.02	-760.34	-759.45	-46.75	40°06'04.297"N	104°40'46.177"W	6.33	N470_B_CK
7246.00	45.520	355.360	7059.72	-722.51	-721.53	-49.97	40°06'04.672"N	104°40'46.218"W	6.33	
7295.00†	48.716	357.016	7093.06	-686.76	-685.72	-52.34	40°06'05.026"N	104°40'46.249"W	6.98	N700_C_CK
7340.00	51.670	358.400	7121.87	-652.26	-651.18	-53.71	40°06'05.367"N	104°40'46.266"W	6.98	
7435.00	57.360	0.980	7177.00	-574.98	-573.87	-54.07	40°06'06.131"N	104°40'46.271"W	6.38	
7530.00	68.880	0.910	7219.88	-490.39	-489.29	-52.68	40°06'06.967"N	104°40'46.253"W	12.13	
7562.00†	71.784	1.015	7230.65	-460.26	-459.16	-52.17	40°06'07.265"N	104°40'46.246"W	9.08	FRHS
7624.00	77.410	1.210	7247.11	-400.51	-399.42	-51.01	40°06'07.855"N	104°40'46.231"W	9.08	
7658.00†	79.607	1.467	7253.88	-367.19	-366.11	-50.23	40°06'08.184"N	104°40'46.221"W	6.51	CDLL
7719.00	83.550	1.920	7262.82	-306.86	-305.81	-48.45	40°06'08.780"N	104°40'46.198"W	6.51	
7766.00	89.260	3.690	7265.76	-259.99	-258.98	-46.15	40°06'09.243"N	104°40'46.169"W	12.72	LANDING POINT
7814.00	89.690	3.730	7266.20	-212.04	-211.08	-43.04	40°06'09.716"N	104°40'46.129"W	0.90	
7908.00	89.780	3.600	7266.64	-118.11	-117.28	-37.04	40°06'10.643"N	104°40'46.052"W	0.17	
8003.00	89.750	3.090	7267.03	-23.17	-22.44	-31.49	40°06'11.580"N	104°40'45.980"W	0.54	
8098.00	89.940	2.700	7267.28	71.79	72.44	-26.69	40°06'12.518"N	104°40'45.919"W	0.46	

REFERENCE WELLPATH IDENTIFICATION

Operator	KERR-MCGEE OIL & GAS ONSHORE LP (WA)	Slot	SLOT#22 ALVIN 26C-29HZ (381'FSL & 280'FEL, SEC.29)
Area	COLORADO	Well	ALVIN 26C-29HZ
Field	WELD COUNTY (UTM/TRUE NORTH)	Wellbore	ALVIN 26C-29HZ AWB
Facility	SEC.29-T2N-R65W		

WELLPATH DATA (141 stations)

MD [ft]	Inclination [°]	Azimuth [°]	TVD [ft]	Vert Sect [ft]	North [ft]	East [ft]	Latitude	Longitude	DLS [°/100ft]	Comments
8192.00	90.890	1.940	7266.60	165.77	166.36	-22.89	40°06'13.446"N	104°40'45.870"W	1.29	
8287.00	90.490	0.160	7265.46	260.76	261.33	-21.15	40°06'14.385"N	104°40'45.847"W	1.92	
8381.00	91.510	359.700	7263.82	354.72	355.31	-21.26	40°06'15.313"N	104°40'45.849"W	1.19	
8476.00	89.690	359.260	7262.82	449.66	450.30	-22.13	40°06'16.252"N	104°40'45.860"W	1.97	
8571.00	88.280	358.790	7264.51	544.56	545.27	-23.74	40°06'17.190"N	104°40'45.881"W	1.56	
8666.00	87.780	359.330	7267.77	639.43	640.20	-25.30	40°06'18.129"N	104°40'45.901"W	0.77	
8760.00	90.430	0.000	7269.24	733.37	734.18	-25.85	40°06'19.057"N	104°40'45.908"W	2.91	
8855.00	89.940	359.760	7268.93	828.34	829.18	-26.05	40°06'19.996"N	104°40'45.910"W	0.57	
8949.00	91.260	0.280	7267.95	922.30	923.17	-26.01	40°06'20.925"N	104°40'45.910"W	1.51	
9044.00	92.090	359.760	7265.17	1017.24	1018.13	-25.98	40°06'21.863"N	104°40'45.909"W	1.03	
9139.00	89.510	359.110	7263.85	1112.17	1113.11	-26.92	40°06'22.802"N	104°40'45.921"W	2.80	
9234.00	89.350	359.620	7264.79	1207.10	1208.09	-27.97	40°06'23.741"N	104°40'45.935"W	0.56	
9329.00	89.200	359.720	7265.99	1302.06	1303.09	-28.52	40°06'24.679"N	104°40'45.942"W	0.19	
9423.00	88.890	359.710	7267.56	1396.00	1397.07	-28.99	40°06'25.608"N	104°40'45.948"W	0.33	
9518.00	87.570	0.250	7270.49	1490.93	1492.02	-29.02	40°06'26.546"N	104°40'45.948"W	1.50	
9613.00	88.800	1.450	7273.50	1585.88	1586.96	-27.61	40°06'27.485"N	104°40'45.930"W	1.81	
9708.00	90.460	2.240	7274.12	1680.87	1681.91	-24.55	40°06'28.423"N	104°40'45.891"W	1.94	
9802.00	89.780	2.890	7273.92	1774.84	1775.81	-20.34	40°06'29.351"N	104°40'45.837"W	1.00	
9896.00	89.170	1.440	7274.78	1868.83	1869.74	-16.79	40°06'30.279"N	104°40'45.791"W	1.67	
9991.00	91.970	0.180	7273.84	1963.81	1964.71	-15.45	40°06'31.218"N	104°40'45.774"W	3.23	
10085.00	91.940	1.010	7270.63	2057.74	2058.65	-14.48	40°06'32.146"N	104°40'45.761"W	0.88	
10180.00	91.690	0.860	7267.62	2152.69	2153.59	-12.93	40°06'33.084"N	104°40'45.741"W	0.31	
10275.00	91.600	1.420	7264.89	2247.65	2248.53	-11.04	40°06'34.022"N	104°40'45.717"W	0.60	
10370.00	91.200	1.500	7262.57	2342.62	2343.47	-8.62	40°06'34.961"N	104°40'45.686"W	0.43	
10464.00	91.290	1.330	7260.53	2436.60	2437.42	-6.30	40°06'35.889"N	104°40'45.656"W	0.20	
10559.00	91.110	1.460	7258.54	2531.58	2532.37	-3.98	40°06'36.827"N	104°40'45.626"W	0.23	
10654.00	88.610	0.080	7258.77	2626.57	2627.35	-2.71	40°06'37.766"N	104°40'45.610"W	3.01	
10748.00	88.770	1.040	7260.92	2720.53	2721.32	-1.79	40°06'38.694"N	104°40'45.598"W	1.04	
10843.00	89.050	1.470	7262.73	2815.51	2816.28	0.29	40°06'39.633"N	104°40'45.571"W	0.54	
10938.00	91.080	1.760	7262.62	2910.51	2911.24	2.97	40°06'40.571"N	104°40'45.537"W	2.16	
11032.00	91.080	2.050	7260.85	3004.49	3005.17	6.09	40°06'41.500"N	104°40'45.497"W	0.31	
11126.00	88.220	0.150	7261.42	3098.47	3099.14	7.90	40°06'42.428"N	104°40'45.473"W	3.65	
11221.00	87.810	0.430	7264.71	3193.40	3194.08	8.38	40°06'43.366"N	104°40'45.467"W	0.52	
11316.00	89.290	1.600	7267.12	3288.36	3289.03	10.06	40°06'44.305"N	104°40'45.445"W	1.99	
11411.00	89.200	2.400	7268.37	3383.34	3383.96	13.38	40°06'45.243"N	104°40'45.403"W	0.85	
11505.00	89.690	2.010	7269.28	3477.33	3477.89	16.99	40°06'46.171"N	104°40'45.356"W	0.67	
11600.00	90.620	1.330	7269.02	3572.33	3572.85	19.76	40°06'47.109"N	104°40'45.321"W	1.21	
11694.00	90.710	1.110	7267.93	3666.32	3666.82	21.76	40°06'48.038"N	104°40'45.295"W	0.25	
11789.00	91.170	1.170	7266.37	3761.30	3761.79	23.65	40°06'48.976"N	104°40'45.271"W	0.49	
11883.00	90.800	2.010	7264.76	3855.29	3855.74	26.26	40°06'49.905"N	104°40'45.237"W	0.98	
11977.00	89.350	2.120	7264.63	3949.28	3949.67	29.65	40°06'50.833"N	104°40'45.193"W	1.55	
12072.00	90.030	2.430	7265.15	4044.26	4044.60	33.42	40°06'51.771"N	104°40'45.145"W	0.79	
12167.00	90.490	1.190	7264.72	4139.26	4139.55	36.42	40°06'52.710"N	104°40'45.106"W	1.39	
12261.00	89.010	359.750	7265.13	4233.24	4233.54	37.19	40°06'53.638"N	104°40'45.096"W	2.20	
12356.00	89.380	359.600	7266.46	4328.19	4328.52	36.65	40°06'54.577"N	104°40'45.103"W	0.42	

REFERENCE WELLPATH IDENTIFICATION

Operator	KERR-MCGEE OIL & GAS ONSHORE LP (WA)	Slot	SLOT#22 ALVIN 26C-29HZ (381'FSL & 280'FEL, SEC.29)
Area	COLORADO	Well	ALVIN 26C-29HZ
Field	WELD COUNTY (UTM/TRUE NORTH)	Wellbore	ALVIN 26C-29HZ AWB
Facility	SEC.29-T2N-R65W		

WELLPATH DATA (141 stations)

MD [ft]	Inclination [°]	Azimuth [°]	TVD [ft]	Vert Sect [ft]	North [ft]	East [ft]	Latitude	Longitude	DLS [°/100ft]	Comments
12451.00	89.690	0.570	7267.23	4423.16	4423.52	36.79	40°06'55.516"N	104°40'45.101"W	1.07	
12546.00	90.430	1.980	7267.13	4518.16	4518.49	38.91	40°06'56.454"N	104°40'45.074"W	1.68	
12641.00	89.110	1.210	7267.51	4613.16	4613.45	41.55	40°06'57.393"N	104°40'45.040"W	1.61	
12736.00	91.230	3.710	7267.23	4708.12	4708.35	45.63	40°06'58.331"N	104°40'44.988"W	3.45	
12821.00	90.800	3.500	7265.73	4793.05	4793.17	50.97	40°06'59.169"N	104°40'44.919"W	0.56	LAST BHI MWD (IFR+SC) SURVEYS
12868.00	90.800	3.500	7265.07	4840.01	4840.08	53.84	40°06'59.632"N	104°40'44.882"W	0.00	PROJECTION TO BIT

HOLE & CASING SECTIONS - Ref Wellbore: ALVIN 26C-29HZ AWB Ref Wellpath: ALVIN 26C-29HZ AWP

String/Diameter	Start MD [ft]	End MD [ft]	Interval [ft]	Start TVD [ft]	End TVD [ft]	Start N/S [ft]	Start E/W [ft]	End N/S [ft]	End E/W [ft]
13.5in Open Hole	16.00	1928.00	1912.00	16.00	1904.51	0.00	0.00	-253.21	-13.24
9.625in Casing Surface	16.00	1918.00	1902.00	16.00	1894.74	0.00	0.00	-251.10	-13.02
8.5in Open Hole	1928.00	12868.00	10940.00	1904.51	7265.07	-253.21	-13.24	4840.08	53.84

TARGETS

Name	TVD [ft]	North [ft]	East [ft]	Grid East [US ft]	Grid North [US ft]	Latitude	Longitude	Shape
SEC.20-T2N-R65W SECTION LINES	-18.00	9842.83	-2144.11	1727907.53	14574334.44	40°07'49.069"N	104°41'13.178"W	polygon
SEC.29-T2N-R65W SECTION LINES	-18.00	81.75	-2069.12	1728017.66	14564577.53	40°06'12.609"N	104°41'12.203"W	polygon
ALVIN 26C-29HZ BHL ON PLAT (50'FNL & 197'FEL, SEC.29)	7265.00	4865.85	61.76	1730130.45	14569367.40	40°06'59.887"N	104°40'44.780"W	point
ALVIN 26C-29HZ HEEL (50'FSL & 342'FEL, SEC.29)	7265.00	-330.70	-60.30	1730027.17	14564172.49	40°06'08.534"N	104°40'46.351"W	point
ALVIN 26C-29HZ LANDBOX	7265.00	0.00	0.00	1730086.25	14564503.27	40°06'11.802"N	104°40'45.575"W	polygon

WELLPATH COMPOSITION - Ref Wellbore: ALVIN 26C-29HZ AWB Ref Wellpath: ALVIN 26C-29HZ AWP

Start MD [ft]	End MD [ft]	Positional Uncertainty Model	Log Name/Comment	Wellbore
16.00	1870.00	Custom_APC_ISCWSA REV 2 MWD	SDI MWD SURVEYS 13.5" HOLE <154-1870>	ALVIN 26C-29HZ AWB
1870.00	12821.00	Custom APC_ISCWSA REV 2 MWD+IFR1+SC (approximation)	BHI MWD (IFR+SC) SURVEYS 8.5" HOLE <1945-12821>	ALVIN 26C-29HZ AWB
12821.00	12868.00	Blind Drilling (std)	Projection to bit	ALVIN 26C-29HZ AWB



Actual Wellpath Report

ALVIN 26C-29HZ AWP
Page 6 of 6



REFERENCE WELLPATH IDENTIFICATION

Operator	KERR-MCGEE OIL & GAS ONSHORE LP (WA)	Slot	SLOT#22 ALVIN 26C-29HZ (381'FSL & 280'FEL, SEC.29)
Area	COLORADO	Well	ALVIN 26C-29HZ
Field	WELD COUNTY (UTM/TRUE NORTH)	Wellbore	ALVIN 26C-29HZ AWB
Facility	SEC.29-T2N-R65W		

WELLPATH COMMENTS

MD [ft]	Inclination [°]	Azimuth [°]	TVD [ft]	Comment
154.00	0.560	42.400	154.00	BEGIN MWD SURVEYS
1870.00	11.770	185.900	1847.79	TIED-ONTO MWD SURVEYS
1945.00	12.460	186.190	1921.12	FIRST BHI MWD (IFR+SC) SURVEYS
7044.00	31.446	358.210	6902.59	SSPG
7094.00	35.111	356.262	6944.42	NBRR
7191.00	42.051	354.925	7020.02	N470_B_CK
7295.00	48.716	357.016	7093.06	N700_C_CK
7562.00	71.784	1.015	7230.65	FRHS
7658.00	79.607	1.467	7253.88	CDLL
7766.00	89.260	3.690	7265.76	LANDING POINT
12821.00	90.800	3.500	7265.73	LAST BHI MWD (IFR+SC) SURVEYS
12868.00	90.800	3.500	7265.07	PROJECTION TO BIT