

17-Feb-2016  
IGRF Model [1900.0-2020.0] Dip: 66.91 deg Field: 52556.0 nT  
Lat: N40 22 25.4496 Long: W104 28 40.4004 Elev: 5474.00 ft  
Magnetic North is 8.20 deg East of TRUE North  
To correct azimuth from Magnetic to TRUE add 8.20 deg

# Great Western Operating Company, LLC

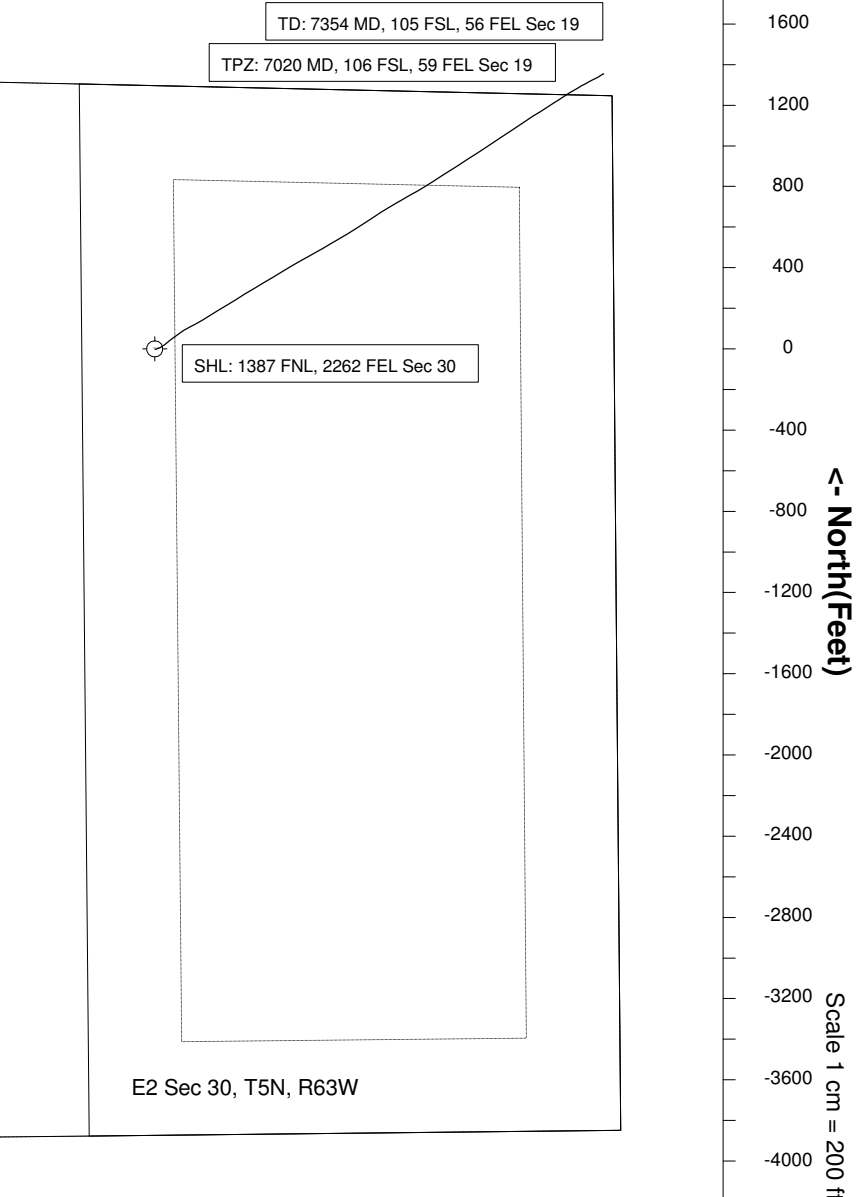
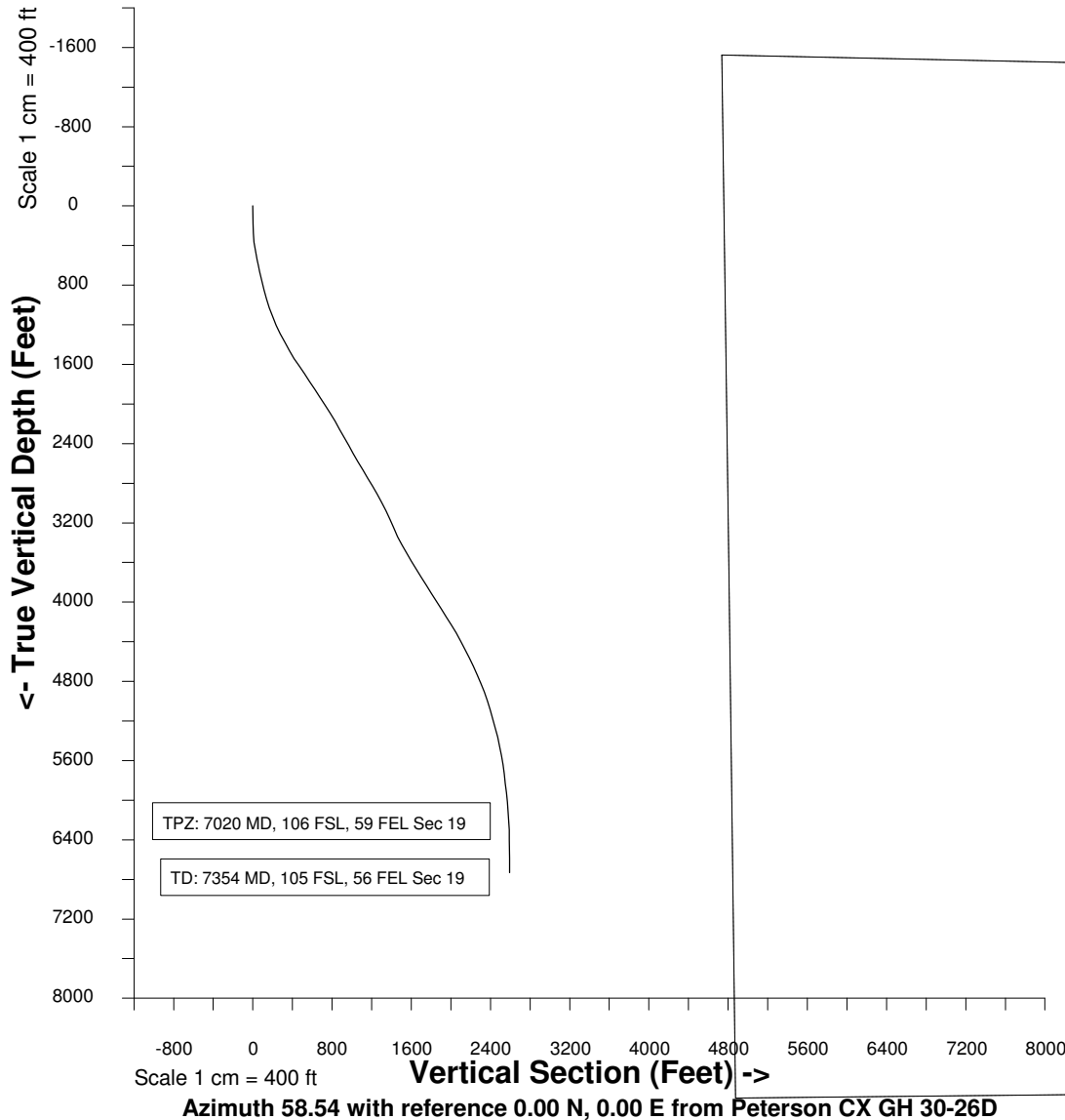
Location	Colorado	Slot	Peterson CX GH 30-26D
Field	Wattenburg	Well	Peterson CX GH 30-26D
Installation	Peterson	Wellbore	Peterson CX GH 30-26D (AWB)

Created by admin  
Date plotted 29-Feb-2016  
Plot reference is Peterson CX GH 30-26D (AWB).  
Ref wellpath is Peterson CX GH 30-26D (AWP#1).  
Coordinates are in Feet reference Peterson CX GH 30-26D.  
True Vertical Depths are reference Rig Datum.  
Measured Depths are reference Rig Datum.  
Rig Datum: Actual Datum #1  
Rig Datum to Mean Sea Level: 5474.00 ft.  
Plot North is aligned to TRUE North.

Scale 1 cm = 200 ft

East (Feet) ->

-3200 -2800 -2400 -2000 -1600 -1200 -800 -400 0 400 800 1200 1600 2000 2400 2800



Surveys				
N/S		E/W	VS	TVD
-1.02	2.65		1.72	180.97
-1.36	6.65		4.93	274.88
1.17	14.22		12.70	367.52
7.08	26.48		26.23	456.47
15.37	41.23		43.13	544.86
21.83	50.45		54.37	600.74
30.29	60.92		67.73	663.30
44.00	77.63		89.16	755.81
58.04	96.42		112.53	847.87
72.97	117.30		138.14	938.29
89.39	141.24		167.15	1028.74
105.77	168.88		199.26	1117.07
123.46	201.68		236.47	1205.52
143.80	237.76		277.84	1291.01
166.52	275.71		322.06	1375.09
190.36	314.77		367.83	1458.33
216.11	355.84		416.30	1538.85
243.50	400.06		468.32	1617.15
270.86	445.59		521.43	1695.90
297.58	490.23		573.44	1774.20
324.31	535.25		625.80	1853.46
351.40	580.07		678.16	1932.73
378.73	624.49		730.31	2012.13
404.88	667.91		781.00	2092.47
429.14	710.15		829.68	2174.03
451.81	751.40		876.68	2255.40
474.11	791.72		922.70	2337.33
496.61	831.32		968.21	2420.70
519.60	870.50		1013.62	2502.99
544.10	911.44		1061.33	2585.14
569.71	953.80		1110.82	2666.22
595.56	995.67		1160.03	2747.48
621.73	1036.59		1208.59	2829.13
648.50	1076.95		1257.00	2910.86
673.22	1114.62		1302.05	2993.33
695.05	1150.34		1343.91	3078.61
714.96	1185.51		1384.29	3165.69
734.42	1219.41		1423.36	3252.27
754.17	1253.15		1462.43	3338.85
775.37	1290.43		1505.30	3423.59
798.99	1330.82		1552.06	3505.12
825.15	1372.59		1601.35	3587.49
852.42	1414.74		1651.55	3668.14
879.66	1457.25		1702.02	3748.62
906.67	1499.65		1752.29	3829.23
933.98	1542.52		1803.12	3909.48
961.15	1584.44		1853.06	3989.11
988.29	1625.45		1902.23	4069.22
1016.39	1667.82		1953.04	4149.47
1044.83	1710.62		2004.41	4229.37
1071.94	1751.43		2053.38	4310.75
1097.21	1789.67		2099.20	4393.95
1121.59	1826.58		2143.41	4478.03
1145.01	1862.43		2186.22	4561.71
1166.91	1896.85		2227.02	4648.60
1186.84	1928.50		2264.42	4734.83
1206.99	1959.65		2301.52	4821.20
1226.53	1989.22		2336.94	4908.26
1244.05	2015.65		2368.64	4997.80
1259.32	2039.85		2397.25	5089.43
1272.34	2062.20		2423.11	5180.84
1284.62	2083.59		2447.76	5272.58
1296.62	2104.59		2471.93	5364.45
1307.13	2123.48		2493.52	5456.95
1315.72	2139.13		2511.35	5549.23
1323.03	2152.35		2526.43	5642.01
1328.33	2163.83		2538.98	5735.15
1332.57	2174.24		2550.06	5829.48
1337.49	2183.59		2560.60	5923.89
1342.26	2191.35		2569.70	6018.45
1346.98	2197.92		2577.78	6112.10
1351.20	2203.55		2584.79	6206.84
1353.32	2207.49		2589.26	6300.73
1354.08	2209.35		2591.23	6396.71
1354.02	2210.78		2592.42	6486.70
1353.47	2211.61		2592.83	6581.69
1353.13	2212.01		2592.99	6681.69
#VALUE!	#VALUE!		#VALUE!	#VALUE!
#VALUE!	#VALUE!		#VALUE!	#VALUE!