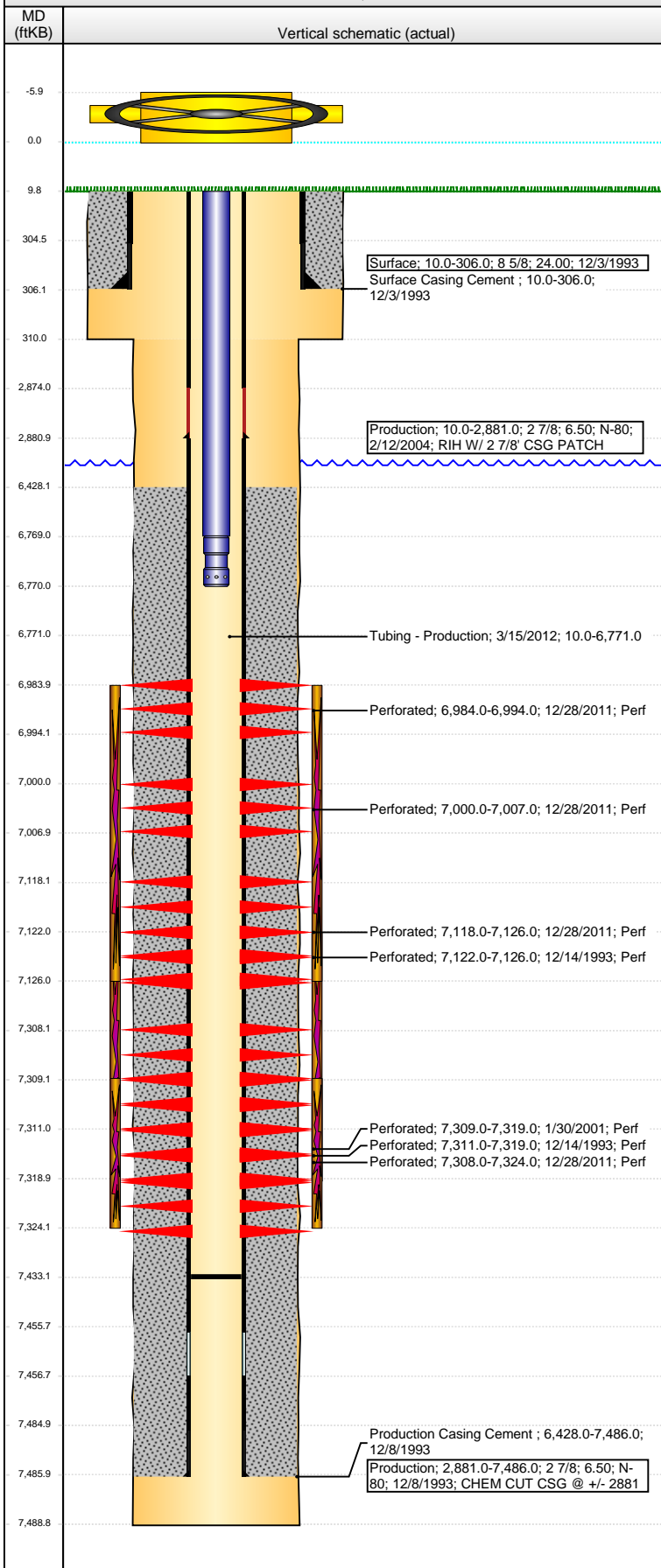


**Well Name: MOSSBERG 41-31**

VERTICAL - ORIGINAL HOLE, 2/29/2016 9:25:14 AM



## Well Header

API	Business Unit	District	Well Config
05-123-17613	DJ BASIN	15	VERTICAL
Original KB Elevation (ft)	KB - GL / MSL (ftKB)	Spud Date	P & A Date
4,846.00	10.00	12/3/1993	

## Comment

WELL DATA SKETCHY & SPARSE

CSG RPR - 2/2004 - NO DRL RPTS - WAITING ON WO/SCHEMATICS TO DOUBLE CHECK THE DETAILS.

KERR-MCGEE WAS GOING TO P&A THIS WELL - BUT JOB WAS NEVER COMPLETED.

## Directions To Well

## Congressional Location

Quarter 1	Quarter 2	Quarter 3	Quarter 4	Section	Township	Twntshp N...	Range	Rng E/W Dir
		NE	NE	31	5	N	66	W

## Bottom Hole Location

North-South Distance (ft)	From N or S Line	East-West Distance (ft)	From E or W Line

## Plug Back Total Depths

Date	Depth (ftKB)	Method	Com
12/8/1993	7,456.0	TAG	FLOAT SHOE
12/13/1993	7,384.0	CASED HOLE LOG	DEPTH LOGGER FROM CBL
2/16/2004	7,433.0	TAG	CLEAN OUT

## Wellbore Sections

Section Des	Size (in)	Act Top, MD (ftKB)	Act Btm, MD (ftKB)
SURFACE	12 1/4	10.0	310.0
PRODUCTION	7 7/8	310.0	7,489.0

## Zone Statuses

Zone Name	Status Date	Status	Fluid Type	Job	Prod Method
NIOBRARA	12/30/1993	PR		DRILLING/CO...	
NIOBRARA	1/13/2012	PR		TRI-FRAC, 8/2...	
CODELL	12/30/1993	PR		DRILLING/CO...	
CODELL	2/17/2001	PR		RE-FRAC, 1/29...	
CODELL	1/13/2012	PR		TRI-FRAC, 8/2...	

## Casing Strings

### Surface, 306.0ftKB

Casing Description	Run Date	OD (in)	Wt/Len (l...)	Grade	Top, MD (ft...)	MD (ftKB)
Surface	12/3/1993	8 5/8	24.00		10.0	306.0

### Production, 2,881.0ftKB

Casing Description	Run Date	OD (in)	Wt/Len (l...)	Grade	Top, MD (ft...)	MD (ftKB)
Production	2/12/2004	2 7/8	6.50	N-80	10.0	2,881.0

### Production, 7,486.0ftKB

Casing Description	Run Date	OD (in)	Wt/Len (l...)	Grade	Top, MD (ft...)	MD (ftKB)
Production	12/8/1993	2 7/8	6.50	N-80	10.0	7,486.0

## Cement

Description	Top Depth (ftKB)	Bottom Depth (ftKB)
Surface Casing Cement	10.0	306.0
Description	Top Depth (ftKB)	Bottom Depth (ftKB)
Production Casing Cement	6,428.0	7,486.0

## Tubing Strings

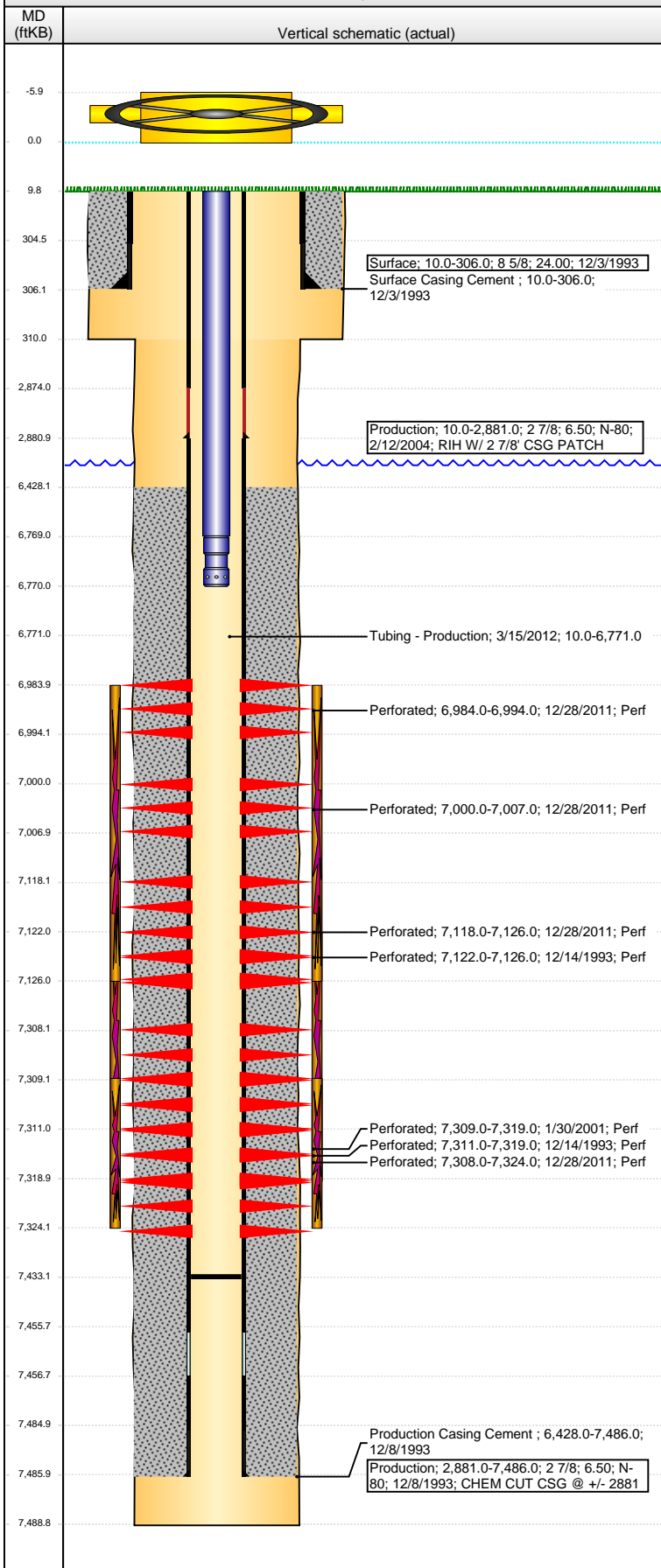
Tubing Description	Run Date	String...	ID (in)	Wt (lb/ft)	Grade	Len (ft)	Set De...
Tubing	1/20/2012						
Tubing Description	Run Date	String...	ID (in)	Wt (lb/ft)	Grade	Len (ft)	Set De...
Tubing - Production	3/15/2012		1.315	1.049	1.72	J-55	6,761.00

## Tubing Components

Item Des	OD (in)	Wt (lb/ft)	Grade	Jts	Len (ft)	Btm (ftKB)	Btm (TVD) (ftKB)
Tubing	1.315	1.72	J-55	208	6,759.00	6,769.0	
Pump Seating	1 1/4			1	1.00	6,770.0	
Nipple					1.00	6,771.0	
Notched collar							

**Well Name: MOSSBERG 41-31**

VERTICAL - ORIGINAL HOLE, 2/29/2016 9:25:16 AM



Perforation Data						
Zone	Brnch/St g	Entered Shot Total	Top (ftKB)	Btm (ftKB)	Date	
NIOBRARA, ORIGINAL HOLE	A	10	6,984.00	6,994.00	12/28/2011	
NIOBRARA, ORIGINAL HOLE	A	14	7,000.00	7,007.00	12/28/2011	
NIOBRARA, ORIGINAL HOLE	B	16	7,118.00	7,126.00	12/28/2011	
NIOBRARA, ORIGINAL HOLE	B	3	7,122.00	7,126.00	12/14/1993	
CODELL, ORIGINAL HOLE		16	7,308.00	7,324.00	12/28/2011	
CODELL, ORIGINAL HOLE		40	7,309.00	7,319.00	1/30/2001	
CODELL, ORIGINAL HOLE		8	7,311.00	7,319.00	12/14/1993	

Stimulations & Treatments			
Date	Zone	Primary Job Type	
12/17/1993	NIOBRARA-CODELL, ORIGINAL HOLE	DRILLING/COMPLETION - ORIGINAL	
Technical Result		Tech Result Details	Tech Result Note
Comment			
LIMITED ENTRY			
Date	Zone	Primary Job Type	
1/31/2001	CODELL, ORIGINAL HOLE	RE-FRAC	
Technical Result		Tech Result Details	Tech Result Note
Comment			
Date	Zone	Primary Job Type	
1/4/2012	CODELL, ORIGINAL HOLE	TRI-FRAC	
Technical Result		Tech Result Details	Tech Result Note
Comment			
Date	Zone	Primary Job Type	
1/4/2012	CODELL, ORIGINAL HOLE	TRI-FRAC	
Technical Result		Tech Result Details	Tech Result Note
Comment			

Other In Hole				
Run Date	Des	OD (in)	Top (ftKB)	Btm (ftKB)

Logs			
Date	Type	Top, MD (ftKB)	Btm, MD (ftKB)
12/7/1993	COMPENSATED DENSITY	300.0	7,500.0
12/7/1993	INDUCTION	300.0	7,500.0
12/13/1993	CBL/CCL/GR	6,330.0	7,378.0