

2014 ANNUAL PROJECT SUMMARY TABLE

Incident Date	Remediation No.	Well Name	API	Status	NFA Submitted	NFA Approved Date	Site Summary (monitoring/remediation/ wells installed or destroyed)	Wells Sampled (Last Quarter) 2014	Wells Exceeding 5 ug/L Benzene (Last Quarter Sampled 2014)	Benzene Range (ug/L) (Last Quarter 2014)	POC Established	2015 Recommendations	Well Reduction Request
8/9/1993	4228	UPRR 38 Pan Am G #1	05-123-09339	Monitoring	NO	NA	Quarterly groundwater monitoring since February 2005. POC was established with monitoring wells MW10 and MW11. Monitoring wells MW10 and MW11 were destroyed in August 2013; however will be replaced in the second quarter 2015 at which point we hope to re-established POC. MW01 destroyed August 2014	MW02R-MW04R, MW05-MW08 XCELO5R, XCELO6	XCELO5R	ND - 98.4	NO	Destroyed wells MW10 and MW11 will be replaced. An additional well will be installed northwest of MW10. Quarterly groundwater monitoring will continue.	MW01, MW08

Notes:

NA - Not Applicable

ND - Non-Detect

NFA - No Further Action

POC - Point of Compliance

received 02/24/2016
project 4228
Document 2525924

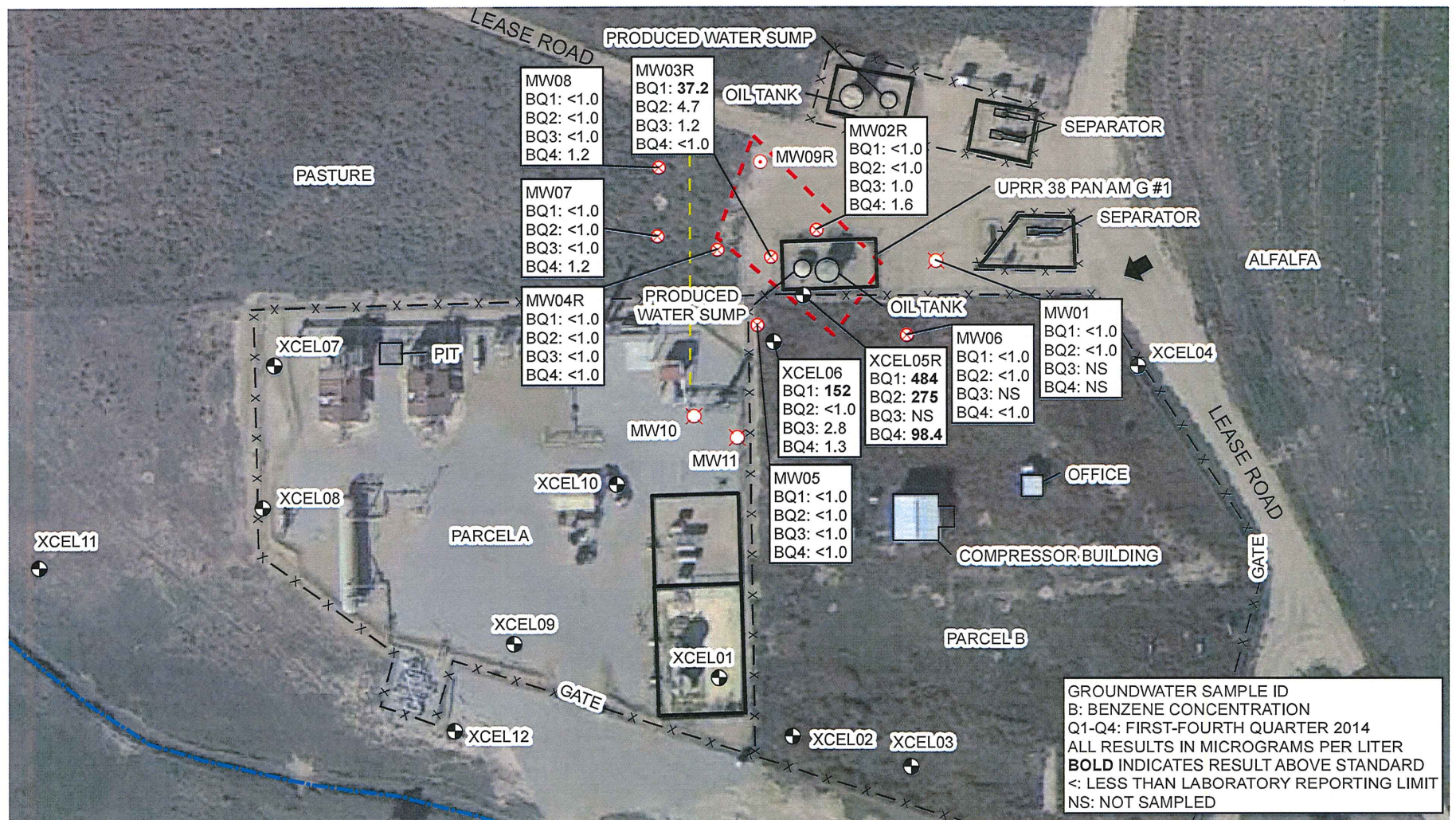


IMAGE COURTESY OF GOOGLE EARTH 2014

LEGEND

- KERR-MCGEE MONITORING WELL
- DESTROYED MONITORING WELL
- REMOVED FROM MONITORING PROGRAM
- XCEL ENERGY MONITORING WELL
- SURVEYED GROUNDWATER FLOW DIRECTION
- HIGH PRESSURE GAS LINE
- IRRIGATION DITCH
- FENCE
- EXCAVATION EXTENT
- BERM

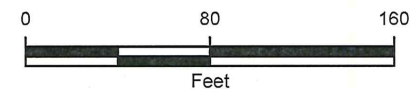


FIGURE 1
SITE MAP
 UPRR 38 PAN AM G #1
 SWSW SEC 3-T2N-R66W
 WELD COUNTY, COLORADO
 KERR-MCGEE OIL & GAS ONSHORE LP



TABLE 1
GROUNDWATER ANALYTICAL AND FIELD RESULTS
UPRR 38 PAN AM G #1
WELD COUNTY, COLORADO
KERR-MCGEE OIL & GAS ONSHORE LP

Well Name	Date	Benzene (ug/L)	Toluene (ug/L)	Ethylbenzene (ug/L)	Xylenes (ug/L)	Depth Water/ (Product Thickness) (ft bgs)	Relative GW Elev. (ft)
MW01	02/25/2005	<1.0	<1.0	<1.0	<3.0	7.58	NA
	05/12/2005	<1.0	<1.0	<1.0	<2.0	7.40	91.60
	08/09/2005	<1.0	<1.0	<1.0	<2.0	7.22	90.78
	11/15/2005	<1.0	<1.0	<1.0	<2.0	5.90	92.10
	02/25/2006	<1.0	<1.0	<1.0	<1.0	7.03	91.97
	05/15/2006	<1.0	<1.0	<1.0	<1.0	6.20	91.80
	08/16/2006	<1.0	<1.0	<1.0	<1.0	8.95	89.05
	11/07/2006	<1.0	<1.0	<1.0	<1.0	7.92	90.08
	02/20/2007	<1.0	<1.0	<1.0	<1.0	7.10	90.90
	05/15/2007	<1.0	<1.0	<1.0	<1.0	3.90	94.10
	08/15/2007	<1.0	<1.0	<1.0	<1.0	5.20	92.80
	11/14/2007	<1.0	<1.0	<1.0	<1.0	6.10	91.90
	02/19/2008	<1.0	<1.0	<1.0	<1.0	5.08	92.92
	05/31/2008	<1.0	<1.0	<1.0	<1.0	5.78	92.22
	08/26/2008	<1.0	<1.0	<1.0	<1.0	7.70	90.30
	12/01/2008	<1.0	<1.0	<1.0	<1.0	6.36	91.64
	02/25/2009	<1.0	<1.0	<1.0	<1.0	6.31	91.69
	05/27/2009	<1.0	<1.0	<1.0	<1.0	4.81	93.19
	08/24/2009	<1.0	<1.0	<1.0	<1.0	5.77	92.23
	11/10/2009	<1.0	<1.0	<1.0	<1.0	PVC Bent	NA
	02/12/2010	<1.0	<1.0	<1.0	<1.0	PVC Bent	NA
	05/04/2010	<1.0	<1.0	<1.0	<1.0	PVC Bent	NA
	08/27/2010	<1.0	<1.0	<1.0	<1.0	PVC Bent	NA
	11/16/2010	<1.0	<1.0	<1.0	<1.0	PVC Bent	NA
	02/22/2011	<1.0	<1.0	<1.0	<1.0	PVC Bent	NA
	05/10/2011	<1.0	<1.0	<1.0	<1.0	PVC Bent	NA
	08/25/2011	<1.0	<1.0	<1.0	<1.0	PVC Bent	NA
	11/18/2011	<1.0	<1.0	<1.0	<1.0	PVC Bent	NA
	02/21/2012	<1.0	<1.0	<1.0	<1.0	PVC Bent	NA
	05/29/2012	<1.0	<1.0	<1.0	<1.0	PVC Bent	NA
	08/31/2012	<1.0	<1.0	<1.0	<1.0	PVC Bent	NA
	11/26/2012	<1.0	<1.0	<1.0	<1.0	PVC Bent	NA
	02/28/2013	<1.0	<1.0	<1.0	<1.0	7.55	90.45
	05/28/2013	<1.0	<1.0	<1.0	<1.0	PVC Bent	NA
	08/27/2013	<1.0	<1.0	<1.0	<1.0	PVC Bent	NA



TABLE 1 (Continued)
GROUNDWATER ANALYTICAL AND FIELD RESULTS
UPRR 38 PAN AM G #1
WELD COUNTY, COLORADO
KERR-MCGEE OIL & GAS ONSHORE LP

Well Name	Date	Benzene (ug/L)	Toluene (ug/L)	Ethylbenzene (ug/L)	Xylenes (ug/L)	Depth Water/ (Product Thickness) (ft bgs)	Relative GW Elev. (ft)
MW01	11/20/2013	<1.0	<1.0	<1.0	<1.0	7.66	90.90
	12/24/2013	Surveyed - Not Sampled				8.05	90.52
	02/25/2014	<1.0	<1.0	<1.0	<1.0	8.18	90.38
	05/23/2014	<1.0	<1.0	<1.0	<1.0	6.26	92.31
	MW01 destroyed as of 8/5/2014						
MW02	02/25/2005	<1.0	<1.0	<1.0	<3.0	7.60	NA
	05/12/2005	<1.0	<1.0	<1.0	<2.0	7.65	NA
	08/09/2005	<1.0	<1.0	<1.0	<2.0	8.05	NA
	11/15/2005	<1.0	<1.0	<1.0	<2.0	6.75	NA
	02/25/2006	<1.0	<1.0	<1.0	<1.0	7.15	NA
	05/15/2006	<1.0	<1.0	<1.0	<1.0	6.07	NA
	08/16/2006	<1.0	<1.0	2.6	<1.0	8.83	NA
	11/07/2006	<1.0	<1.0	<1.0	<1.0	8.11	NA
	05/15/2007	<1.0	<1.0	<1.0	<1.0	NM	NA
	08/15/2007	<1.0	<1.0	<1.0	<1.0	5.90	NA
	11/14/2007	<1.0	<1.0	<1.0	<1.0	6.55	NA
	MW02 destroyed as of 2/19/2008						
MW02R	02/27/2008	120	2.0	930	9800	NM	NA
	05/31/2008	51	<1.0	320	860	7.10	91.78
	08/26/2008	5.7	<1.0	170	340	8.92	89.96
	12/01/2008	22	<1.0	710	5100	3.47	95.41
	02/25/2009	16	<1.0	490	5200	7.51	91.37
	05/27/2009	7.5	<1.0	370	3500	5.94	92.94
	08/24/2009	5.3	<1.0	310	1900	6.65	92.23
	11/10/2009	10	<1.0	460	3000	7.11	91.77
	02/12/2010	8.5	<1.0	500	3000	6.69	92.19
	05/04/2010	3.9	<1.0	300	1900	5.10	93.98
	08/27/2010	2.4	<1.0	230	720	6.94	91.94
	11/16/2010	4.1	<1.0	190	720	7.20	91.68
	02/22/2011	7.7	<1.0	190	580	7.42	91.46
	05/10/2011	4.9	<1.0	180	530	7.17	91.71
	08/25/2011	190	140	89	220	6.32	92.56
	11/18/2011	73	41	69	210	5.85	93.03
	02/21/2012	32	4.6	70	<1.0	5.73	93.15
	05/29/2012	22	1.8	70	220	5.70	93.18



TABLE 1 (Continued)
GROUNDWATER ANALYTICAL AND FIELD RESULTS
UPRR 38 PAN AM G #1
WELD COUNTY, COLORADO
KERR-MCGEE OIL & GAS ONSHORE LP

Well Name	Date	Benzene (ug/L)	Toluene (ug/L)	Ethylbenzene (ug/L)	Xylenes (ug/L)	Depth Water/ (Product Thickness) (ft bgs)	Relative GW Elev. (ft)
MW02R	08/31/2012	8.4	<1.0	40	120	8.60	90.28
	11/26/2012	3.1	<1.0	40	98	8.45	90.43
	02/28/2013	3.5	<1.0	53	110	8.53	90.35
	05/28/2013	1.1	<1.0	28	76	6.27	92.61
	08/27/2013	1.3	<1.0	11	66	9.02	89.86
	11/20/2013	1.1	<1.0	13.4	43.7	7.92	90.94
	12/24/2013	Surveyed - Not Sampled				8.58	90.43
	02/25/2014	<1.0	<1.0	14.7	34.8	8.71	90.17
	05/23/2014	<1.0	<1.0	<1.0	<1.0	6.97	92.04
	08/05/2014	1.0	<1.0	2.4	2.2	6.72	92.29
	11/17/2014	1.6	<1.0	8.0	20.2	8.16	90.85
MW03	02/25/2005	340	<1.0	780	5042	8.86	NA
	05/12/2005	170	<1.0	280	5.7	7.95	NA
	08/09/2005	550	<1.0	420	2000	8.40	NA
	11/15/2005	160	<1.0	240	260	7.12	NA
	02/25/2006	220	<1.0	170	66	7.46	NA
	05/15/2006	190	<1.0	31	6.4	6.44	NA
	08/16/2006	170	<1.0	21	110	8.91	NA
	11/07/2006	190	<1.0	79	110	8.55	NA
	02/20/2007	180	<1.0	5.5	<1.0	NM	NA
	05/15/2007	150	<1.0	4.6	15	4.73	NA
	08/15/2007	120	<1.0	2.0	<1.0	5.50	NA
	11/14/2007	170	<1.0	1.3	<1.0	6.48	NA
MW03 destroyed as of 2/19/2008							
MW03R	02/27/2008	2800	83	190	1100	NM	NA
	05/31/2008	9500	26	230	2100	6.65	91.50
	08/26/2008	3700	<1.0	160	290	7.62	90.53
	12/01/2008	20000	<1.0	480	690	4.07	94.08
	02/25/2009	1300	<1.0	14	32	6.29	90.86
	05/27/2009	290	<1.0	1.8	2.2	5.40	92.75
	08/24/2009	650	<1.0	2.4	2.6	5.83	92.32
	11/10/2009	1400	<1.0	2.8	2.8	7.49	91.16
	02/12/2010	8.7	<1.0	<1.0	<1.0	6.45	91.70
	05/04/2010	42	<1.0	<1.0	<1.0	4.51	93.64
	08/27/2010	59	<1.0	<1.0	<1.0	6.03	92.12



TABLE 1 (Continued)
GROUNDWATER ANALYTICAL AND FIELD RESULTS
UPRR 38 PAN AM G #1
WELD COUNTY, COLORADO
KERR-MCGEE OIL & GAS ONSHORE LP

Well Name	Date	Benzene (ug/L)	Toluene (ug/L)	Ethylbenzene (ug/L)	Xylenes (ug/L)	Depth Water/ (Product Thickness) (ft bgs)	Relative GW Elev. (ft)
MW03R	11/16/2010	51	<1.0	<1.0	<1.0	6.67	91.48
	02/22/2011	12	<1.0	<1.0	<1.0	7.10	91.05
	05/10/2011	53	<1.0	<1.0	<1.0	6.71	91.44
	08/25/2011	17	<1.0	<1.0	<1.0	5.81	92.34
	11/18/2011	2.8	<1.0	<1.0	<1.0	5.36	92.79
	02/21/2012	14	<1.0	<1.0	<1.0	4.78	93.37
	05/29/2012	19	<1.0	<1.0	<1.0	4.72	93.43
	08/31/2012	<1.0	<1.0	<1.0	<1.0	7.95	90.20
	11/26/2012	<1.0	<1.0	<1.0	<1.0	8.22	89.93
	02/28/2013	<1.0	<1.0	<1.0	<1.0	8.08	90.07
	05/28/2013	<1.0	<1.0	<1.0	<1.0	5.45	92.70
	08/27/2013	<1.0	<1.0	<1.0	<1.0	8.06	90.09
	11/20/2013	2.6	<1.0	<1.0	<1.0	7.10	91.05
	12/24/2013	Surveyed - Not Sampled				8.14	90.25
	02/25/2014	37.2	<1.0	3.3	12.9	8.71	89.89
	05/23/2014	4.7	<1.0	<1.0	<1.0	6.85	91.54
	08/05/2014	1.2	<1.0	<1.0	<1.0	6.07	92.32
	11/17/2014	<1.0	<1.0	<1.0	<1.0	8.45	89.94
MW04	08/09/2005	430	<1.0	290	3000	7.65	NA
	11/15/2005	Dry - Not Sampled				Dry	NA
	12/05/2005	300	<1.0	210	7.0	NM	NA
	02/25/2006	<1.0	<1.0	<1.0	<1.0	7.75	NA
	05/15/2006	<1.0	<1.0	<1.0	<1.0	7.60	NA
	08/22/2006	<1.0	<1.0	<1.0	<1.0	10.51	NA
	11/07/2006	350	<1.0	190	830	9.93	NA
	02/20/2007	190	<1.0	19	15	NM	NA
	05/15/2007	130	<1.0	1.6	<1.0	5.80	NA
	08/15/2007	110	2.3	<1.0	11	7.33	NA
	11/14/2007	<1.0	<1.0	<1.0	<1.0	7.41	NA
MW04 destroyed as of 2/19/2008							
MW04R	02/27/2008	480	1.3	460	4200	NM	NA
	05/31/2008	120	<1.0	150	590	6.95	90.97
	08/26/2008	27	<1.0	49	48	8.73	89.19
	12/01/2008	34	<1.0	1.9	<1.0	4.24	93.68
	02/25/2009	28	<1.0	<1.0	<1.0	7.64	90.28



TABLE 1 (Continued)
GROUNDWATER ANALYTICAL AND FIELD RESULTS
UPRR 38 PAN AM G #1
WELD COUNTY, COLORADO
KERR-MCGEE OIL & GAS ONSHORE LP

Well Name	Date	Benzene (ug/L)	Toluene (ug/L)	Ethylbenzene (ug/L)	Xylenes (ug/L)	Depth Water/ (Product Thickness) (ft bgs)	Relative GW Elev. (ft)
MW04R	05/27/2009	6.0	<1.0	<1.0	<1.0	5.54	92.38
	08/24/2009	5.6	<1.0	<1.0	<1.0	6.45	91.47
	11/10/2009	4.0	<1.0	<1.0	<1.0	6.79	91.13
	02/12/2010	2.0	<1.0	<1.0	<1.0	6.64	91.28
	05/04/2010	<1.0	<1.0	<1.0	<1.0	PVC Blocked	NA
	08/27/2010	<1.0	<1.0	<1.0	<1.0	7.04	90.88
	11/16/2010	<1.0	<1.0	<1.0	<1.0	PVC Bent	NA
	02/22/2011	<1.0	<1.0	<1.0	<1.0	PVC Bent	NA
	05/10/2011	<1.0	<1.0	<1.0	<1.0	PVC Bent	NA
	08/25/2011	<1.0	<1.0	<1.0	<1.0	6.43	91.49
	11/18/2011	<1.0	<1.0	<1.0	<1.0	5.90	92.02
	02/21/2012	<1.0	<1.0	<1.0	<1.0	5.21	92.71
	05/29/2012	<1.0	<1.0	<1.0	<1.0	4.83	93.09
	08/31/2012	<1.0	<1.0	<1.0	<1.0	PVC Bent	NA
	11/26/2012	<1.0	<1.0	<1.0	<1.0	PVC Bent	NA
	02/28/2013	<1.0	<1.0	<1.0	<1.0	8.24	89.68
	05/28/2013	<1.0	<1.0	<1.0	<1.0	PVC Bent	NA
	08/27/2013	<1.0	<1.0	<1.0	<1.0	PVC Bent	NA
	11/20/2013	<1.0	<1.0	<1.0	<1.0	7.50	90.42
	12/24/2013	Surveyed - Not Sampled				8.18	89.86
	02/25/2014	<1.0	<1.0	<1.0	<1.0	8.41	89.51
	05/23/2014	Inaccessible - Not Sampled				6.80	91.24
	05/27/2014	<1.0	<1.0	<1.0	<1.0	NM	NA
	08/05/2014	<1.0	<1.0	<1.0	<1.0	NM	NA
	11/17/2014	<1.0	<1.0	<1.0	<1.0	NM	NA
MW05	08/09/2005	<1.0	<1.0	<1.0	<2.0	9.80	87.39
	11/15/2005	4.0	<1.0	25	4.5	6.59	90.50
	02/25/2006	3.8	<1.0	<1.0	<1.0	6.38	91.16
	05/15/2006	4.8	<1.0	<1.0	<1.0	6.24	91.30
	08/16/2006	5.6	<1.0	<1.0	<1.0	8.39	89.15
	11/07/2006	<1.0	<1.0	<1.0	<1.0	8.23	89.31
	02/20/2007	<1.0	<1.0	<1.0	<1.0	NM	90.00
	05/15/2007	<1.0	<1.0	<1.0	<1.0	4.85	92.69
	08/15/2007	<1.0	<1.0	<1.0	<1.0	5.52	92.02
	11/14/2007	<1.0	<1.0	<1.0	<1.0	6.23	91.31



TABLE 1 (Continued)
GROUNDWATER ANALYTICAL AND FIELD RESULTS
UPRR 38 PAN AM G #1
WELD COUNTY, COLORADO
KERR-MCGEE OIL & GAS ONSHORE LP

Well Name	Date	Benzene (ug/L)	Toluene (ug/L)	Ethylbenzene (ug/L)	Xylenes (ug/L)	Depth Water/ (Product Thickness) (ft bgs)	Relative GW Elev. (ft)
MW05	02/19/2008	<1.0	<1.0	<1.0	<1.0	5.25	92.29
	05/31/2008	<1.0	<1.0	<1.0	<1.0	5.57	92.03
	08/29/2008	2.0	<1.0	<1.0	<1.0	NM	NA
	12/01/2008	Inaccessible - Not Sampled				NM	NA
	02/25/2009	<1.0	<1.0	<1.0	<1.0	6.88	90.72
	05/27/2009	<1.0	<1.0	<1.0	<1.0	4.92	92.68
	08/24/2009	<1.0	<1.0	<1.0	<1.0	5.69	91.91
	11/10/2009	<1.0	<1.0	<1.0	<1.0	5.95	91.65
	02/12/2010	1.2	<1.0	<1.0	<1.0	5.99	91.61
	05/04/2010	<1.0	<1.0	<1.0	<1.0	4.28	93.32
	08/27/2010	1.4	<1.0	<1.0	<1.0	6.36	91.24
	11/16/2010	<1.0	<1.0	<1.0	<1.0	6.33	91.27
	02/22/2011	<1.0	<1.0	<1.0	<1.0	6.76	90.84
	05/10/2011	<1.0	<1.0	<1.0	<1.0	6.50	91.10
	08/25/2011	<1.0	<1.0	<1.0	<1.0	5.83	91.77
	11/18/2011	<1.0	<1.0	<1.0	<1.0	5.28	92.32
	02/21/2012	<1.0	<1.0	<1.0	<1.0	5.26	92.34
	05/29/2012	<1.0	<1.0	<1.0	<1.0	5.16	92.44
	08/31/2012	<1.0	<1.0	<1.0	<1.0	7.01	90.59
	11/26/2012	<1.0	<1.0	<1.0	<1.0	8.01	89.59
	02/28/2013	<1.0	<1.0	<1.0	<1.0	7.61	89.99
	05/28/2013	<1.0	<1.0	<1.0	<1.0	5.45	92.15
	08/27/2013	Inaccessible - Not Sampled				Inaccessible	NA
	08/30/2013	<1.0	<1.0	<1.0	<1.0	7.36	90.24
	11/20/2013	<1.0	<1.0	<1.0	<1.0	7.39	90.71
	12/24/2013	Surveyed - Not Sampled				7.82	89.74
	02/25/2014	<1.0	<1.0	<1.0	<1.0	8.41	89.69
	05/23/2014	<1.0	<1.0	<1.0	<1.0	7.25	90.31
	08/05/2014	<1.0	<1.0	<1.0	<1.0	5.98	91.58
	11/17/2014	<1.0	<1.0	<1.0	<1.0	7.86	89.70
MW06	08/09/2005	2.1	<1.0	2.1	23	6.28	NA
	11/15/2005	<1.0	<1.0	<1.0	<2.0	4.00	NA
	02/25/2006	<1.0	<1.0	<1.0	<1.0	5.81	NA
	05/15/2006	<1.0	<1.0	<1.0	<1.0	5.82	NA
	08/16/2006	<1.0	<1.0	<1.0	<1.0	8.75	NA



TABLE 1 (Continued)
GROUNDWATER ANALYTICAL AND FIELD RESULTS
UPRR 38 PAN AM G #1
WELD COUNTY, COLORADO
KERR-MCGEE OIL & GAS ONSHORE LP

Well Name	Date	Benzene (ug/L)	Toluene (ug/L)	Ethylbenzene (ug/L)	Xylenes (ug/L)	Depth Water/ (Product Thickness) (ft bgs)	Relative GW Elev. (ft)
MW06	11/07/2006	<1.0	<1.0	<1.0	<1.0	7.40	NA
	02/20/2007	<1.0	<1.0	<1.0	<1.0	NM	NA
	05/15/2007	<1.0	<1.0	<1.0	<1.0	3.64	NA
	08/15/2007	<1.0	<1.0	<1.0	<1.0	4.76	NA
	11/14/2007	<1.0	<1.0	<1.0	<1.0	5.86	NA
	02/27/2008	<1.0	<1.0	<1.0	<1.0	NM	NA
	05/31/2008	<1.0	<1.0	<1.0	<1.0	NM	NA
	08/29/2008	<1.0	<1.0	<1.0	<1.0	NM	NA
	12/01/2008	Inaccessible - Not Sampled				NM	NA
	02/25/2009	<1.0	<1.0	<1.0	<1.0	5.97	NA
	05/27/2009	<1.0	<1.0	<1.0	<1.0	4.35	NA
	08/24/2009	<1.0	<1.0	<1.0	<1.0	5.63	NA
	11/10/2009	<1.0	<1.0	<1.0	<1.0	NM	NA
	02/12/2010	<1.0	<1.0	<1.0	<1.0	5.40	NA
	05/04/2010	<1.0	<1.0	<1.0	<1.0	6.07	NA
	08/27/2010	<1.0	<1.0	<1.0	<1.0	7.44	NA
	11/16/2010	<1.0	<1.0	<1.0	<1.0	5.91	NA
	02/22/2011	<1.0	<1.0	<1.0	<1.0	6.28	NA
	05/10/2011	<1.0	<1.0	<1.0	<1.0	5.92	NA
	08/25/2011	<1.0	<1.0	<1.0	<1.0	5.46	NA
	11/18/2011	<1.0	<1.0	<1.0	<1.0	4.69	NA
	02/21/2012	<1.0	<1.0	<1.0	<1.0	4.67	NA
	05/29/2012	<1.0	<1.0	<1.0	<1.0	4.64	NA
	08/31/2012	<1.0	<1.0	<1.0	<1.0	6.66	NA
	11/26/2012	<1.0	<1.0	<1.0	<1.0	7.68	NA
	03/04/2013	<1.0	<1.0	<1.0	<1.0	NM	NA
	05/28/2013	<1.0	<1.0	<1.0	<1.0	5.39	NA
	08/27/2013	Inaccessible - Not Sampled				Inaccessible	NA
	08/30/2013	<1.0	<1.0	<1.0	<1.0	7.41	NA
	11/20/2013	<1.0	<1.0	<1.0	<1.0	6.91	NA
	02/25/2014	<1.0	<1.0	<1.0	<1.0	7.39	NA
	05/23/2014	<1.0	<1.0	<1.0	<1.0	8.34	NA
	08/05/2014	Not Found - Not Sampled				NM	NA
	11/17/2014	<1.0	<1.0	<1.0	<1.0	10.24	NA
MW06R	12/24/2013	Surveyed - Not Sampled				7.09	90.50



TABLE 1 (Continued)
GROUNDWATER ANALYTICAL AND FIELD RESULTS
UPRR 38 PAN AM G #1
WELD COUNTY, COLORADO
KERR-MCGEE OIL & GAS ONSHORE LP

Well Name	Date	Benzene (ug/L)	Toluene (ug/L)	Ethylbenzene (ug/L)	Xylenes (ug/L)	Depth Water/ (Product Thickness) (ft bgs)	Relative GW Elev. (ft)
MW07	02/25/2006	<1.0	<1.0	<1.0	<1.0	7.34	90.74
	05/15/2006	<1.0	<1.0	<1.0	<1.0	7.48	90.60
	08/16/2006	<1.0	<1.0	<1.0	<1.0	10.33	87.75
	11/07/2006	<1.0	<1.0	<1.0	<1.0	9.40	88.68
	02/20/2007	<1.0	<1.0	<1.0	<1.0	NM	89.41
	05/15/2007	<1.0	<1.0	<1.0	<1.0	5.70	92.39
	08/15/2007	<1.0	<1.0	<1.0	<1.0	6.89	91.20
	11/14/2007	<1.0	<1.0	<1.0	<1.0	7.13	90.96
	02/19/2008	<1.0	<1.0	<1.0	<1.0	6.92	91.97
	05/31/2008	<1.0	<1.0	<1.0	<1.0	8.09	90.80
	08/26/2008	<1.0	<1.0	<1.0	<1.0	10.01	88.88
	12/01/2008	<1.0	<1.0	<1.0	<1.0	7.05	91.84
	02/25/2009	<1.0	<1.0	<1.0	<1.0	8.76	90.13
	05/27/2009	<1.0	<1.0	<1.0	<1.0	6.33	92.56
	08/24/2009	<1.0	<1.0	<1.0	<1.0	7.67	91.22
	11/10/2009	<1.0	<1.0	<1.0	<1.0	7.89	91.00
	02/12/2010	<1.0	<1.0	<1.0	<1.0	7.74	91.15
	05/04/2010	<1.0	<1.0	<1.0	<1.0	6.12	92.77
	08/27/2010	<1.0	<1.0	<1.0	<1.0	8.12	90.77
	11/16/2010	<1.0	<1.0	<1.0	<1.0	7.95	90.94
	02/22/2011	<1.0	<1.0	<1.0	<1.0	8.47	90.42
	05/10/2011	<1.0	<1.0	<1.0	<1.0	8.23	90.66
	08/25/2011	<1.0	<1.0	<1.0	<1.0	7.51	91.38
	11/18/2011	<1.0	<1.0	<1.0	<1.0	7.04	91.85
	02/21/2012	<1.0	<1.0	<1.0	<1.0	7.06	91.83
	05/29/2012	<1.0	<1.0	<1.0	<1.0	6.97	91.92
	08/31/2012	<1.0	<1.0	<1.0	<1.0	10.01	88.88
	11/26/2012	<1.0	<1.0	<1.0	<1.0	8.92	89.97
	02/28/2013	<1.0	<1.0	<1.0	<1.0	9.35	89.54
	05/28/2013	<1.0	<1.0	<1.0	<1.0	7.04	91.85
	08/27/2013	<1.0	<1.0	<1.0	<1.0	10.22	88.67
	11/20/2013	<1.0	<1.0	<1.0	<1.0	8.63	90.26
	12/24/2013	Surveyed - Not Sampled				8.26	89.74
	02/25/2014	<1.0	<1.0	<1.0	<1.0	9.58	89.31
	05/23/2014	<1.0	<1.0	<1.0	<1.0	7.16	90.84



TABLE 1 (Continued)
GROUNDWATER ANALYTICAL AND FIELD RESULTS
UPRR 38 PAN AM G #1
WELD COUNTY, COLORADO
KERR-MCGEE OIL & GAS ONSHORE LP

Well Name	Date	Benzene (ug/L)	Toluene (ug/L)	Ethylbenzene (ug/L)	Xylenes (ug/L)	Depth Water/ (Product Thickness) (ft bgs)	Relative GW Elev. (ft)
MW07	08/05/2014	<1.0	<1.0	<1.0	<1.0	6.51	91.49
	11/17/2014	1.2	<1.0	<1.0	<1.0	8.74	89.26
MW08	02/25/2006	<1.0	<1.0	<1.0	<1.0	7.90	90.19
	05/15/2006	<1.0	<1.0	<1.0	<1.0	7.80	90.29
	08/16/2006	<1.0	<1.0	<1.0	<1.0	10.69	87.40
	11/07/2006	<1.0	<1.0	<1.0	<1.0	9.52	88.57
	02/20/2007	<1.0	<1.0	<1.0	<1.0	NM	89.14
	05/15/2007	<1.0	<1.0	<1.0	<1.0	5.92	92.17
	08/15/2007	<1.0	<1.0	<1.0	<1.0	7.19	90.90
	11/14/2007	<1.0	<1.0	<1.0	<1.0	7.46	90.63
	02/19/2008	<1.0	<1.0	<1.0	<1.0	6.36	91.73
	05/31/2008	<1.0	<1.0	<1.0	<1.0	7.04	91.05
	08/26/2008	4.0	<1.0	<1.0	<1.0	7.75	90.34
	12/01/2008	<1.0	<1.0	<1.0	<1.0	6.47	91.62
	02/25/2009	<1.0	<1.0	<1.0	<1.0	7.74	90.35
	05/27/2009	<1.0	<1.0	<1.0	<1.0	5.51	92.58
	08/24/2009	<1.0	<1.0	<1.0	<1.0	7.04	91.05
	11/10/2009	<1.0	<1.0	<1.0	<1.0	7.02	91.07
	02/12/2010	<1.0	<1.0	<1.0	<1.0	6.97	91.12
	05/04/2010	<1.0	<1.0	<1.0	<1.0	5.31	92.78
	08/27/2010	<1.0	<1.0	<1.0	<1.0	7.33	90.76
	11/16/2010	<1.0	<1.0	<1.0	<1.0	7.10	90.99
	02/22/2011	<1.0	<1.0	<1.0	<1.0	7.63	90.46
	05/10/2011	<1.0	<1.0	<1.0	<1.0	7.40	90.69
	08/25/2011	<1.0	<1.0	<1.0	<1.0	6.67	91.42
	11/18/2011	<1.0	<1.0	<1.0	<1.0	6.24	91.85
	02/21/2012	<1.0	<1.0	<1.0	<1.0	6.20	91.89
	05/29/2012	<1.0	<1.0	<1.0	<1.0	6.18	91.91
	08/31/2012	<1.0	<1.0	<1.0	<1.0	9.07	89.02
	11/26/2012	<1.0	<1.0	<1.0	<1.0	7.97	90.12
	02/28/2013	<1.0	<1.0	<1.0	<1.0	8.46	89.63
	05/28/2013	<1.0	<1.0	<1.0	<1.0	6.15	91.94
	08/27/2013	<1.0	<1.0	<1.0	<1.0	9.46	88.63
	11/20/2013	<1.0	<1.0	<1.0	<1.0	7.80	90.29
	12/24/2013	Surveyed - Not Sampled				8.79	89.77



TABLE 1 (Continued)
GROUNDWATER ANALYTICAL AND FIELD RESULTS
UPRR 38 PAN AM G #1
WELD COUNTY, COLORADO
KERR-MCGEE OIL & GAS ONSHORE LP

Well Name	Date	Benzene (ug/L)	Toluene (ug/L)	Ethylbenzene (ug/L)	Xylenes (ug/L)	Depth Water/ (Product Thickness) (ft bgs)	Relative GW Elev. (ft)
MW08	02/25/2014	<1.0	<1.0	<1.0	<1.0	8.84	89.25
	05/23/2014	<1.0	<1.0	1.5	<1.0	8.16	90.40
	08/05/2014	<1.0	<1.0	<1.0	<1.0	7.25	91.31
	11/17/2014	1.2	<1.0	<1.0	<1.0	9.36	89.20
MW09	02/25/2006	89	7.0	120	420	7.05	NA
	05/15/2006	59	<1.0	81	290	7.21	NA
	08/16/2006	40	<1.0	230	780	9.65	NA
	11/07/2006	36	<1.0	86	420	9.79	NA
	02/20/2007	21	<1.0	33	58	NM	NA
	05/15/2007	39	<1.0	<1.0	<1.0	5.05	NA
	08/15/2007	22	<1.0	<1.0	<1.0	6.62	NA
	11/14/2007	49	<1.0	<1.0	<1.0	7.00	NA
MW09 destroyed as of 2/19/2008							
MW09R	02/19/2008	Dry - Not Sampled				Dry	NA
	05/31/2008	16	<1.0	44	73	7.11	91.19
	08/26/2008	11	<1.0	7.6	7.7	9.84	88.46
	12/01/2008	13	<1.0	2.4	<1.0	5.19	93.11
	02/25/2009	1.6	<1.0	<1.0	<1.0	7.82	90.48
	05/27/2009	2.0	<1.0	<1.0	<1.0	5.88	92.42
	08/24/2009	2.4	<1.0	<1.0	<1.0	6.85	91.45
	11/10/2009	<1.0	<1.0	<1.0	<1.0	7.29	91.01
	02/12/2010	<1.0	<1.0	<1.0	<1.0	6.92	91.38
	05/04/2010	<1.0	<1.0	<1.0	<1.0	5.33	92.97
	08/27/2010	<1.0	<1.0	<1.0	<1.0	7.47	90.83
	11/16/2010	<1.0	<1.0	<1.0	<1.0	7.28	91.02
	02/22/2011	<1.0	<1.0	<1.0	<1.0	7.61	90.69
	05/10/2011	<1.0	<1.0	<1.0	<1.0	7.45	90.85
	08/25/2011	Removed from monitoring				NM	NA
	12/24/2013	Surveyed - Not Sampled				8.44	90.06
MW10	05/31/2011	<1.0	<1.0	<1.0	<1.0	4.08	NA
	08/25/2011	<1.0	<1.0	<1.0	<1.0	5.55	NA
	11/18/2011	<1.0	<1.0	<1.0	<1.0	5.46	NA
	02/21/2012	<1.0	<1.0	<1.0	<1.0	4.87	NA
	05/29/2012	<1.0	<1.0	<1.0	<1.0	4.87	NA
	08/31/2012	<1.0	<1.0	<1.0	<1.0	7.01	NA



TABLE 1 (Continued)
GROUNDWATER ANALYTICAL AND FIELD RESULTS
UPRR 38 PAN AM G #1
WELD COUNTY, COLORADO
KERR-MCGEE OIL & GAS ONSHORE LP

Well Name	Date	Benzene (ug/L)	Toluene (ug/L)	Ethylbenzene (ug/L)	Xylenes (ug/L)	Depth Water/ (Product Thickness) (ft bgs)	Relative GW Elev. (ft)
MW10	11/26/2012	<1.0	<1.0	<1.0	<1.0	8.20	NA
	02/28/2013	Not Found - Not Sampled/construction				Not Found	NA
	05/28/2013	Not Found - Not Sampled				Not Found	NA
	MW10 destroyed as of 8/27/2013						
MW11	05/31/2011	<1.0	<1.0	<1.0	<1.0	3.52	NA
	08/25/2011	<1.0	<1.0	<1.0	<1.0	4.93	NA
	11/18/2011	<1.0	<1.0	<1.0	<1.0	4.78	NA
	02/21/2012	<1.0	<1.0	<1.0	<1.0	4.29	NA
	05/29/2012	<1.0	<1.0	<1.0	<1.0	4.29	NA
	08/31/2012	<1.0	<1.0	<1.0	<1.0	6.85	NA
	11/26/2012	Not Found - Not Sampled				Not Found	NA
	02/28/2013	Not Found - Not Sampled/construction				Not Found	NA
	05/28/2013	Not Found - Not Sampled				Not Found	NA
MW11 destroyed as of 8/27/2013							
XCEL05	02/25/2005	730	<3.0	140	179.3	NM	NA
	05/12/2005	330	<1.0	52	67	NM	NA
	08/18/2005	97	<1.0	170	190	7.61	NA
	11/15/2005	320	<1.0	290	920	NM	NA
	02/25/2006	230	<1.0	240	840	NM	NA
	05/15/2006	<1.0	<1.0	<1.0	<1.0	NM	NA
	08/28/2006	310	<1.0	260	840	NM	NA
	11/07/2006	190	<1.0	300	460	NM	NA
	02/20/2007	49	<1.0	81	5.4	NM	NA
	05/15/2007	9.6	<1.0	56	480	NM	NA
	08/15/2007	<1.0	<1.0	<1.0	<1.0	NM	NA
	11/14/2007	13	<1.0	<1.0	<1.0	NM	NA
XCEL05 destroyed as of 2/19/2008							
XCEL05R	02/27/2008	190	1.2	100	1200	NM	NA
	05/31/2008	140	<1.0	94	760	NM	NA
	08/29/2008	110	<1.0	3.1	<1.0	NM	NA
	12/01/2008	Inaccessible - Not Sampled				Inaccessible	NA
	02/25/2009	7.8	<1.0	1.7	2.9	7.05	91.07
	05/27/2009	20	<1.0	<1.0	<1.0	5.21	92.91
	08/24/2009	91	<1.0	3.5	24	6.23	91.89
	11/10/2009	120	<1.0	17	6.5	6.74	91.38



TABLE 1 (Continued)
GROUNDWATER ANALYTICAL AND FIELD RESULTS
UPRR 38 PAN AM G #1
WELD COUNTY, COLORADO
KERR-MCGEE OIL & GAS ONSHORE LP

Well Name	Date	Benzene (ug/L)	Toluene (ug/L)	Ethylbenzene (ug/L)	Xylenes (ug/L)	Depth Water/ (Product Thickness) (ft bgs)	Relative GW Elev. (ft)
XCEL05R	02/12/2010	130	<1.0	27	130	6.28	91.84
	05/04/2010	87	<1.0	18	77	4.68	93.44
	08/27/2010	110	<1.0	18	3.0	6.58	91.54
	11/16/2010	210	<1.0	26	3.3	6.66	91.46
	02/22/2011	130	<1.0	17	14	6.95	91.17
	05/10/2011	190	<1.0	<1.0	<1.0	6.64	91.48
	08/25/2011	120	<1.0	20	5.7	6.14	91.98
	11/18/2011	250	<1.0	9.8	<1.0	4.93	93.19
	02/21/2012	150	<1.0	6.5	<1.0	5.35	92.77
	05/29/2012	75	<1.0	<1.0	<1.0	5.35	92.77
	08/31/2012	58	<1.0	<1.0	<1.0	7.84	90.28
	11/26/2012	<1.0	<1.0	<1.0	<1.0	8.69	89.43
	02/28/2013	4.3	<1.0	<1.0	<1.0	7.93	90.19
	05/28/2013	2.9	<1.0	<1.0	<1.0	5.77	92.35
	08/27/2013	Inaccessible - Not Sampled				Inaccessible	NA
	08/30/2013	1.1	<1.0	<1.0	<1.0	7.88	90.24
	11/20/2013	91.2	<1.0	3.6	2.4	7.35	90.77
	12/24/2013	Surveyed - Not Sampled				7.52	90.24
	02/25/2014	484	<1.0	118	251	8.15	89.97
	05/23/2014	275	<1.0	32.7	50.1	7.31	90.99
	08/05/2014	Not Found - Not Sampled				NM	NA
	11/17/2014	98.4	<4.0	25.9	<4.0	8.70	89.60
XCEL06	02/25/2005	2.0	<1.0	<1.0	3.0	NM	NA
	05/12/2005	2.5	<1.0	1.1	2.5	NM	NA
	08/18/2005	<1.0	<1.0	<1.0	<2.0	7.36	NA
	11/15/2005	<1.0	<1.0	<1.0	<2.0	NM	NA
	02/25/2006	<1.0	<1.0	<1.0	<1.0	NM	NA
	05/15/2006	<1.0	<1.0	<1.0	<1.0	NM	NA
	08/28/2006	<1.0	<1.0	<1.0	<1.0	NM	NA
	11/07/2006	<1.0	<1.0	<1.0	<1.0	NM	NA
	02/20/2007	<1.0	<1.0	<1.0	<1.0	NM	NA
	05/15/2007	<1.0	<1.0	<1.0	<1.0	NM	NA
	08/15/2007	<1.0	<1.0	<1.0	<1.0	NM	NA
	11/14/2007	8.8	1.0	2.9	330	NM	NA
	02/19/2008	<1.0	<1.0	<1.0	<1.0	NM	NA



TABLE 1 (Continued)
GROUNDWATER ANALYTICAL AND FIELD RESULTS
UPRR 38 PAN AM G #1
WELD COUNTY, COLORADO
KERR-MCGEE OIL & GAS ONSHORE LP

Well Name	Date	Benzene (ug/L)	Toluene (ug/L)	Ethylbenzene (ug/L)	Xylenes (ug/L)	Depth Water/ (Product Thickness) (ft bgs)	Relative GW Elev. (ft)
XCEL06	05/31/2008	1.4	<1.0	<1.0	<1.0	NM	NA
	08/29/2008	<1.0	<1.0	<1.0	<1.0	NM	NA
	12/01/2008	Inaccessible - Not Sampled				Inaccessible	NA
	02/25/2009	<1.0	<1.0	<1.0	<1.0	6.28	NA
	05/27/2009	<1.0	<1.0	<1.0	<1.0	4.75	NA
	08/24/2009	Not Sampled				NM	NA
	11/10/2009	<1.0	<1.0	<1.0	<1.0	6.83	NA
	02/12/2010	4.2	<1.0	<1.0	<1.0	5.61	NA
	05/04/2010	16	<1.0	<1.0	<1.0	4.11	NA
	08/27/2010	26	<1.0	<1.0	<1.0	6.57	NA
	11/16/2010	41	<1.0	<1.0	<1.0	6.00	NA
	02/22/2011	<1.0	<1.0	<1.0	<1.0	NM	NA
	05/10/2011	2.4	<1.0	<1.0	<1.0	6.05	NA
	08/25/2011	6.9	<1.0	<1.0	<1.0	5.43	NA
	11/18/2011	<1.0	<1.0	<1.0	<1.0	4.31	NA
	02/21/2012	1.1	<1.0	<1.0	<1.0	4.80	NA
	05/29/2012	42	<1.0	<1.0	<1.0	4.80	NA
	08/31/2012	78	<1.0	<1.0	<1.0	6.95	NA
	11/26/2012	<1.0	<1.0	<1.0	<1.0	8.00	NA
	02/28/2013	11	<1.0	<1.0	<1.0	7.46	NA
	05/28/2013	3.5	<1.0	<1.0	<1.0	5.15	NA
	08/27/2013	Inaccessible - Not Sampled				Inaccessible	NA
	08/30/2013	<1.0	<1.0	<1.0	<1.0	NM	NA
	11/20/2013	<1.0	<1.0	<1.0	<1.0	6.75	NA
	02/25/2014	152	<1.0	<1.0	<1.0	7.54	NA
	05/23/2014	<1.0	<1.0	<1.0	<1.0	6.39	NA
	08/05/2014	2.8	<1.0	<1.0	<1.0	5.94	NA
	11/17/2014	1.3	<1.0	<1.0	<1.0	7.59	NA
XCEL06R	12/24/2013	Surveyed - Not Sampled				6.70	90.16



TABLE 1 (Continued)
GROUNDWATER ANALYTICAL AND FIELD RESULTS
UPRR 38 PAN AM G #1
WELD COUNTY, COLORADO
KERR-MCGEE OIL & GAS ONSHORE LP

Well Name	Date	Benzene (ug/L)	Toluene (ug/L)	Ethylbenzene (ug/L)	Xylenes (ug/L)	Depth Water/ (Product Thickness) (ft bgs)	Relative GW Elev. (ft)
CGWQS		5	1000	680	10000		

Notes: ug/L - micrograms per Liter
ft bgs - feet below ground surface
GW - Groundwater

Elev. - Elevation
Bold numbers indicate result exceeded standard.
< - less than

NA - Not Analyzed/Not Available
NM - Not Measured
CGWQS - Colorado Groundwater Quality Standards

