

2013 ANNUAL PROJECT SUMMARY TABLE

Incident Date	Remediation No.	Well Name	API	Status	NFA Submitted	NFA Approved Date	2013 Site Summary (monitoring/remediation/ wells installed or destroyed)	Wells Sampled (Last Quarter) 2013	Wells Exceeding 5 ug/L Benzene (Last Quarter Sampled 2013)	Benzene Range (ug/L) (Last Quarter 2013)	POC Established	2014 Recommendations	Well Reduction Request
8/9/1993	4228	UPRR 38 Pan Am G #1	05-123-09339	Monitoring	NO	N/A	Quarterly groundwater monitoring since Feb-2005. MW10 and MW11 destroyed Aug-2013.	MW01-MW08 XCEL05R, XCEL06	XCEL05R	ND - 91.2	YES	Destroyed wells MW10 and MW11 will be replaced. Quarterly groundwater monitoring will continue.	MW01

Notes:

N/A - Not Applicable

ND - Non-Detect

NFA - No Further Action

POC - Point of Compliance

received 02/24/2016
Project 4228
Document 2525923

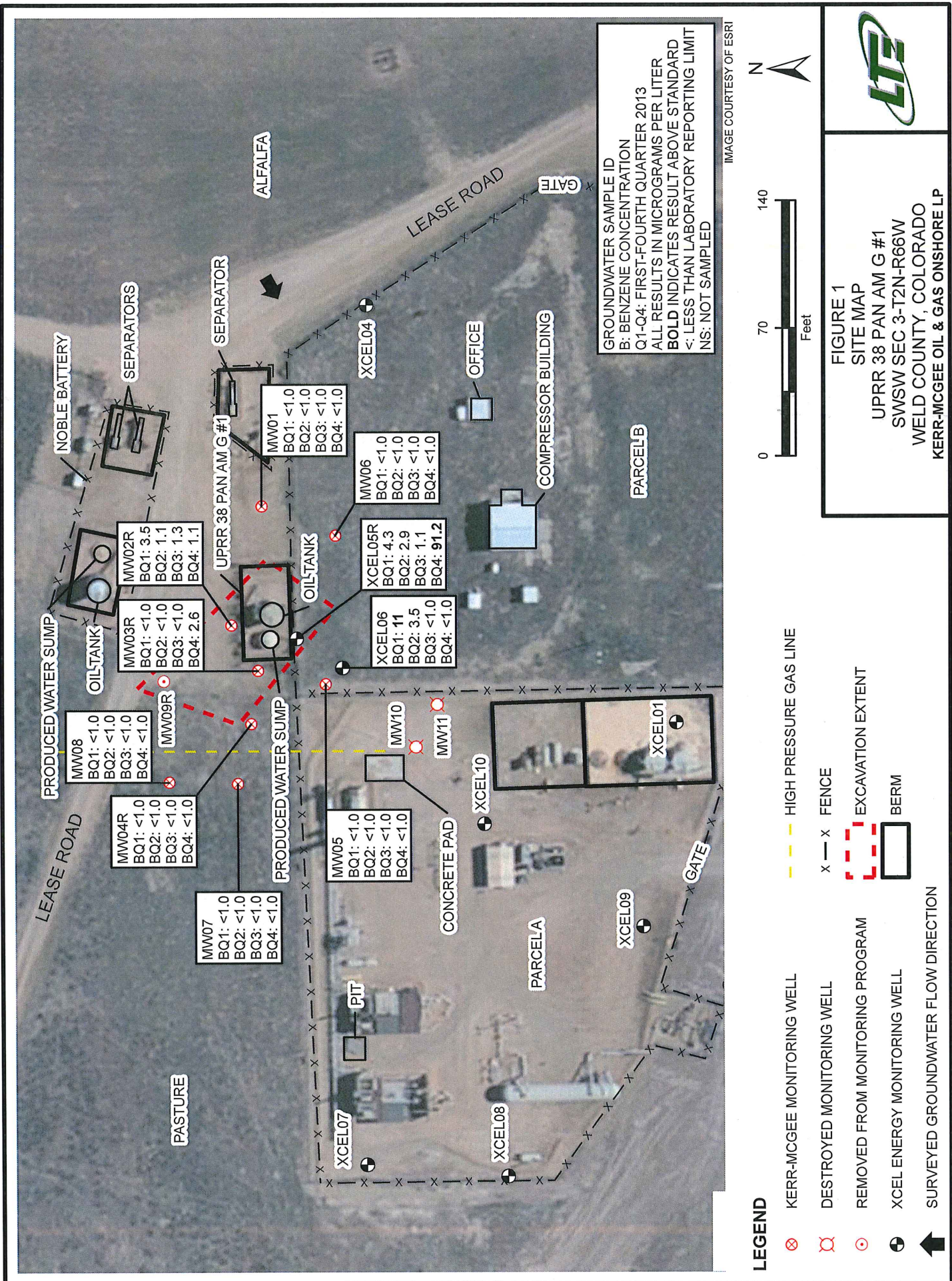


TABLE 1
GROUNDWATER ANALYTICAL AND FIELD RESULTS
UPRR 38 PAN AM G #1
WELD COUNTY, COLORADO
KERR-MCGEE OIL & GAS ONSHORE LP

Well Name	Date	Benzene (ug/L)	Toluene (ug/L)	Ethylbenzene (ug/L)	Xylenes (ug/L)	Depth Water/ (Product Thickness) (ft bgs)
MW01	02/25/2005	<1.0	<1.0	<1.0	<3.0	7.58
	05/12/2005	<1.0	<1.0	<1.0	<2.0	7.40
	08/09/2005	<1.0	<1.0	<1.0	<2.0	7.22
	11/15/2005	<1.0	<1.0	<1.0	<2.0	5.90
	02/25/2006	<1.0	<1.0	<1.0	<1.0	7.03
	05/15/2006	<1.0	<1.0	<1.0	<1.0	6.20
	08/16/2006	<1.0	<1.0	<1.0	<1.0	8.95
	11/07/2006	<1.0	<1.0	<1.0	<1.0	7.92
	02/20/2007	<1.0	<1.0	<1.0	<1.0	7.10
	05/15/2007	<1.0	<1.0	<1.0	<1.0	3.90
	08/15/2007	<1.0	<1.0	<1.0	<1.0	5.20
	11/14/2007	<1.0	<1.0	<1.0	<1.0	6.10
	02/19/2008	<1.0	<1.0	<1.0	<1.0	5.08
	05/31/2008	<1.0	<1.0	<1.0	<1.0	5.78
	08/26/2008	<1.0	<1.0	<1.0	<1.0	7.70
	12/01/2008	<1.0	<1.0	<1.0	<1.0	6.36
	02/25/2009	<1.0	<1.0	<1.0	<1.0	6.31
	05/27/2009	<1.0	<1.0	<1.0	<1.0	4.81
	08/24/2009	<1.0	<1.0	<1.0	<1.0	5.77
	11/10/2009	<1.0	<1.0	<1.0	<1.0	PVC Bent
	02/12/2010	<1.0	<1.0	<1.0	<1.0	PVC Bent
	05/04/2010	<1.0	<1.0	<1.0	<1.0	PVC Bent
	08/27/2010	<1.0	<1.0	<1.0	<1.0	PVC Bent
	11/16/2010	<1.0	<1.0	<1.0	<1.0	PVC Bent
	02/22/2011	<1.0	<1.0	<1.0	<1.0	PVC Bent
	05/10/2011	<1.0	<1.0	<1.0	<1.0	PVC Bent
	08/25/2011	<1.0	<1.0	<1.0	<1.0	PVC Bent
	11/18/2011	<1.0	<1.0	<1.0	<1.0	PVC Bent
	02/21/2012	<1.0	<1.0	<1.0	<1.0	PVC Bent
	05/29/2012	<1.0	<1.0	<1.0	<1.0	PVC Bent
	08/31/2012	<1.0	<1.0	<1.0	<1.0	PVC Bent
	11/26/2012	<1.0	<1.0	<1.0	<1.0	PVC Bent
	02/28/2013	<1.0	<1.0	<1.0	<1.0	7.55
	05/28/2013	<1.0	<1.0	<1.0	<1.0	PVC Bent
	08/27/2013	<1.0	<1.0	<1.0	<1.0	PVC Bent
	11/20/2013	<1.0	<1.0	<1.0	<1.0	7.66



TABLE 1 (Continued)
GROUNDWATER ANALYTICAL AND FIELD RESULTS
UPRR 38 PAN AM G #1
WELD COUNTY, COLORADO
KERR-MCGEE OIL & GAS ONSHORE LP

Well Name	Date	Benzene (ug/L)	Toluene (ug/L)	Ethylbenzene (ug/L)	Xylenes (ug/L)	Depth Water/ (Product Thickness) (ft bgs)
MW02	02/25/2005	<1.0	<1.0	<1.0	<3.0	7.60
	05/12/2005	<1.0	<1.0	<1.0	<2.0	7.65
	08/09/2005	<1.0	<1.0	<1.0	<2.0	8.05
	11/15/2005	<1.0	<1.0	<1.0	<2.0	6.75
	02/25/2006	<1.0	<1.0	<1.0	<1.0	7.15
	05/15/2006	<1.0	<1.0	<1.0	<1.0	6.07
	08/16/2006	<1.0	<1.0	2.6	<1.0	8.83
	11/07/2006	<1.0	<1.0	<1.0	<1.0	8.11
	05/15/2007	<1.0	<1.0	<1.0	<1.0	NM
	08/15/2007	<1.0	<1.0	<1.0	<1.0	5.90
	11/14/2007	<1.0	<1.0	<1.0	<1.0	6.55
MW02 destroyed as of 2/19/2008						
MW02R	02/27/2008	120	2.0	930	9800	NM
	05/31/2008	51	<1.0	320	860	7.10
	08/26/2008	5.7	<1.0	170	340	8.92
	12/01/2008	22	<1.0	710	5100	3.47
	02/25/2009	16	<1.0	490	5200	7.51
	05/27/2009	7.5	<1.0	370	3500	5.94
	08/24/2009	5.3	<1.0	310	1900	6.65
	11/10/2009	10	<1.0	460	3000	7.11
	02/12/2010	8.5	<1.0	500	3000	6.69
	05/04/2010	3.9	<1.0	300	1900	5.10
	08/27/2010	2.4	<1.0	230	720	6.94
	11/16/2010	4.1	<1.0	190	720	7.20
	02/22/2011	7.7	<1.0	190	580	7.42
	05/10/2011	4.9	<1.0	180	530	7.17
	08/25/2011	190	140	89	220	6.32
	11/18/2011	73	41	69	210	5.85
	02/21/2012	32	4.6	70	<1.0	5.73
	05/29/2012	22	1.8	70	220	5.70
	08/31/2012	8.4	<1.0	40	120	8.60
	11/26/2012	3.1	<1.0	40	98	8.45
	02/28/2013	3.5	<1.0	53	110	8.53
	05/28/2013	1.1	<1.0	28	76	6.27
	08/27/2013	1.3	<1.0	11	66	9.02
	11/20/2013	1.1	<1.0	13.4	43.7	7.92



TABLE 1 (Continued)
GROUNDWATER ANALYTICAL AND FIELD RESULTS
UPRR 38 PAN AM G #1
WELD COUNTY, COLORADO
KERR-MCGEE OIL & GAS ONSHORE LP

Well Name	Date	Benzene (ug/L)	Toluene (ug/L)	Ethylbenzene (ug/L)	Xylenes (ug/L)	Depth Water/ (Product Thickness) (ft bgs)
MW03	02/25/2005	340	<1.0	780	5042	8.86
	05/12/2005	170	<1.0	280	5.7	7.95
	08/09/2005	550	<1.0	420	2000	8.40
	11/15/2005	160	<1.0	240	260	7.12
	02/25/2006	220	<1.0	170	66	7.46
	05/15/2006	190	<1.0	31	6.4	6.44
	08/16/2006	170	<1.0	21	110	8.91
	11/07/2006	190	<1.0	79	110	8.55
	02/20/2007	180	<1.0	5.5	<1.0	NM
	05/15/2007	150	<1.0	4.6	15	4.73
	08/15/2007	120	<1.0	2.0	<1.0	5.50
	11/14/2007	170	<1.0	1.3	<1.0	6.48
MW03 destroyed as of 2/19/2008						
MW03R	02/27/2008	2800	83	190	1100	NM
	05/31/2008	9500	26	230	2100	6.65
	08/26/2008	3700	<1.0	160	290	7.62
	12/01/2008	20000	<1.0	480	690	4.07
	02/25/2009	1300	<1.0	14	32	6.29
	05/27/2009	290	<1.0	1.8	2.2	5.40
	08/24/2009	650	<1.0	2.4	2.6	5.83
	11/10/2009	1400	<1.0	2.8	2.8	7.49
	02/12/2010	8.7	<1.0	<1.0	<1.0	6.45
	05/04/2010	42	<1.0	<1.0	<1.0	4.51
	08/27/2010	59	<1.0	<1.0	<1.0	6.03
	11/16/2010	51	<1.0	<1.0	<1.0	6.67
	02/22/2011	12	<1.0	<1.0	<1.0	7.10
	05/10/2011	53	<1.0	<1.0	<1.0	6.71
	08/25/2011	17	<1.0	<1.0	<1.0	5.81
	11/18/2011	2.8	<1.0	<1.0	<1.0	5.36
	02/21/2012	14	<1.0	<1.0	<1.0	4.78
	05/29/2012	19	<1.0	<1.0	<1.0	4.72
	08/31/2012	<1.0	<1.0	<1.0	<1.0	7.95
	11/26/2012	<1.0	<1.0	<1.0	<1.0	8.22
	02/28/2013	<1.0	<1.0	<1.0	<1.0	8.08
	05/28/2013	<1.0	<1.0	<1.0	<1.0	5.45
	08/27/2013	<1.0	<1.0	<1.0	<1.0	8.06
	11/20/2013	2.6	<1.0	<1.0	<1.0	7.10



TABLE 1 (Continued)
GROUNDWATER ANALYTICAL AND FIELD RESULTS
UPRR 38 PAN AM G #1
WELD COUNTY, COLORADO
KERR-MCGEE OIL & GAS ONSHORE LP

Well Name	Date	Benzene (ug/L)	Toluene (ug/L)	Ethylbenzene (ug/L)	Xylenes (ug/L)	Depth Water/ (Product Thickness) (ft bgs)
MW04	08/09/2005	430	<1.0	290	3000	7.65
	11/15/2005	Dry - Not Sampled				Dry
	12/05/2005	300	<1.0	210	7.0	NM
	02/25/2006	<1.0	<1.0	<1.0	<1.0	7.75
	05/15/2006	<1.0	<1.0	<1.0	<1.0	7.60
	08/22/2006	<1.0	<1.0	<1.0	<1.0	10.51
	11/07/2006	350	<1.0	190	830	9.93
	02/20/2007	190	<1.0	19	15	NM
	05/15/2007	130	<1.0	1.6	<1.0	5.80
	08/15/2007	110	2.3	<1.0	11	7.33
	11/14/2007	<1.0	<1.0	<1.0	<1.0	7.41
MW04 destroyed as of 2/19/2008						
MW04R	02/27/2008	480	1.3	460	4200	NM
	05/31/2008	120	<1.0	150	590	6.95
	08/26/2008	27	<1.0	49	48	8.73
	12/01/2008	34	<1.0	1.9	<1.0	4.24
	02/25/2009	28	<1.0	<1.0	<1.0	7.64
	05/27/2009	6.0	<1.0	<1.0	<1.0	5.54
	08/24/2009	5.6	<1.0	<1.0	<1.0	6.45
	11/10/2009	4.0	<1.0	<1.0	<1.0	6.79
	02/12/2010	2.0	<1.0	<1.0	<1.0	6.64
	05/04/2010	<1.0	<1.0	<1.0	<1.0	PVC Blocked
	08/27/2010	<1.0	<1.0	<1.0	<1.0	7.04
	11/16/2010	<1.0	<1.0	<1.0	<1.0	PVC Bent
	02/22/2011	<1.0	<1.0	<1.0	<1.0	PVC Bent
	05/10/2011	<1.0	<1.0	<1.0	<1.0	PVC Bent
	08/25/2011	<1.0	<1.0	<1.0	<1.0	6.43
	11/18/2011	<1.0	<1.0	<1.0	<1.0	5.90
	02/21/2012	<1.0	<1.0	<1.0	<1.0	5.21
	05/29/2012	<1.0	<1.0	<1.0	<1.0	4.83
	08/31/2012	<1.0	<1.0	<1.0	<1.0	PVC Bent
	11/26/2012	<1.0	<1.0	<1.0	<1.0	PVC Bent
	02/28/2013	<1.0	<1.0	<1.0	<1.0	8.24
	05/28/2013	<1.0	<1.0	<1.0	<1.0	PVC Bent
	08/27/2013	<1.0	<1.0	<1.0	<1.0	PVC Bent
	11/20/2013	<1.0	<1.0	<1.0	<1.0	7.50



TABLE 1 (Continued)
GROUNDWATER ANALYTICAL AND FIELD RESULTS
UPRR 38 PAN AM G #1
WELD COUNTY, COLORADO
KERR-MCGEE OIL & GAS ONSHORE LP

Well Name	Date	Benzene (ug/L)	Toluene (ug/L)	Ethylbenzene (ug/L)	Xylenes (ug/L)	Depth Water/ (Product Thickness) (ft bgs)
MW05	08/09/2005	<1.0	<1.0	<1.0	<2.0	9.80
	11/15/2005	4.0	<1.0	25	4.5	6.59
	02/25/2006	3.8	<1.0	<1.0	<1.0	6.38
	05/15/2006	4.8	<1.0	<1.0	<1.0	6.24
	08/16/2006	5.6	<1.0	<1.0	<1.0	8.39
	11/07/2006	<1.0	<1.0	<1.0	<1.0	8.23
	02/20/2007	<1.0	<1.0	<1.0	<1.0	NM
	05/15/2007	<1.0	<1.0	<1.0	<1.0	4.85
	08/15/2007	<1.0	<1.0	<1.0	<1.0	5.52
	11/14/2007	<1.0	<1.0	<1.0	<1.0	6.23
	02/19/2008	<1.0	<1.0	<1.0	<1.0	5.25
	05/31/2008	<1.0	<1.0	<1.0	<1.0	5.57
	08/29/2008	2.0	<1.0	<1.0	<1.0	NM
	12/01/2008	Inaccessible - Not Sampled				NM
	02/25/2009	<1.0	<1.0	<1.0	<1.0	6.88
	05/27/2009	<1.0	<1.0	<1.0	<1.0	4.92
	08/24/2009	<1.0	<1.0	<1.0	<1.0	5.69
	11/10/2009	<1.0	<1.0	<1.0	<1.0	5.95
	02/12/2010	1.2	<1.0	<1.0	<1.0	5.99
	05/04/2010	<1.0	<1.0	<1.0	<1.0	4.28
	08/27/2010	1.4	<1.0	<1.0	<1.0	6.36
	11/16/2010	<1.0	<1.0	<1.0	<1.0	6.33
	02/22/2011	<1.0	<1.0	<1.0	<1.0	6.76
	05/10/2011	<1.0	<1.0	<1.0	<1.0	6.50
	08/25/2011	<1.0	<1.0	<1.0	<1.0	5.83
	11/18/2011	<1.0	<1.0	<1.0	<1.0	5.28
	02/21/2012	<1.0	<1.0	<1.0	<1.0	5.26
	05/29/2012	<1.0	<1.0	<1.0	<1.0	5.16
	08/31/2012	<1.0	<1.0	<1.0	<1.0	7.01
	11/26/2012	<1.0	<1.0	<1.0	<1.0	8.01
	02/28/2013	<1.0	<1.0	<1.0	<1.0	7.61
	05/28/2013	<1.0	<1.0	<1.0	<1.0	5.45
	08/27/2013	Inaccessible - Not Sampled				Inaccessible
	08/30/2013	<1.0	<1.0	<1.0	<1.0	7.36
	11/20/2013	<1.0	<1.0	<1.0	<1.0	7.39



TABLE 1 (Continued)
GROUNDWATER ANALYTICAL AND FIELD RESULTS
UPRR 38 PAN AM G #1
WELD COUNTY, COLORADO
KERR-MCGEE OIL & GAS ONSHORE LP

Well Name	Date	Benzene (ug/L)	Toluene (ug/L)	Ethylbenzene (ug/L)	Xylenes (ug/L)	Depth Water/ (Product Thickness) (ft bgs)
MW06	08/09/2005	2.1	<1.0	2.1	23	6.28
	11/15/2005	<1.0	<1.0	<1.0	<2.0	4.00
	02/25/2006	<1.0	<1.0	<1.0	<1.0	5.81
	05/15/2006	<1.0	<1.0	<1.0	<1.0	5.82
	08/16/2006	<1.0	<1.0	<1.0	<1.0	8.75
	11/07/2006	<1.0	<1.0	<1.0	<1.0	7.40
	02/20/2007	<1.0	<1.0	<1.0	<1.0	NM
	05/15/2007	<1.0	<1.0	<1.0	<1.0	3.64
	08/15/2007	<1.0	<1.0	<1.0	<1.0	4.76
	11/14/2007	<1.0	<1.0	<1.0	<1.0	5.86
	02/27/2008	<1.0	<1.0	<1.0	<1.0	NM
	05/31/2008	<1.0	<1.0	<1.0	<1.0	NM
	08/29/2008	<1.0	<1.0	<1.0	<1.0	NM
	12/01/2008	Inaccessible - Not Sampled				NM
	02/25/2009	<1.0	<1.0	<1.0	<1.0	5.97
	05/27/2009	<1.0	<1.0	<1.0	<1.0	4.35
	08/24/2009	<1.0	<1.0	<1.0	<1.0	5.63
	11/10/2009	<1.0	<1.0	<1.0	<1.0	NM
	02/12/2010	<1.0	<1.0	<1.0	<1.0	5.40
	05/04/2010	<1.0	<1.0	<1.0	<1.0	6.07
	08/27/2010	<1.0	<1.0	<1.0	<1.0	7.44
	11/16/2010	<1.0	<1.0	<1.0	<1.0	5.91
	02/22/2011	<1.0	<1.0	<1.0	<1.0	6.28
	05/10/2011	<1.0	<1.0	<1.0	<1.0	5.92
	08/25/2011	<1.0	<1.0	<1.0	<1.0	5.46
	11/18/2011	<1.0	<1.0	<1.0	<1.0	4.69
	02/21/2012	<1.0	<1.0	<1.0	<1.0	4.67
	05/29/2012	<1.0	<1.0	<1.0	<1.0	4.64
	08/31/2012	<1.0	<1.0	<1.0	<1.0	6.66
	11/26/2012	<1.0	<1.0	<1.0	<1.0	7.68
	03/04/2013	<1.0	<1.0	<1.0	<1.0	NM
	05/28/2013	<1.0	<1.0	<1.0	<1.0	5.39
	08/27/2013	Inaccessible - Not Sampled				Inaccessible
	08/30/2013	<1.0	<1.0	<1.0	<1.0	7.41
	11/20/2013	<1.0	<1.0	<1.0	<1.0	6.91



TABLE 1 (Continued)
GROUNDWATER ANALYTICAL AND FIELD RESULTS
UPRR 38 PAN AM G #1
WELD COUNTY, COLORADO
KERR-MCGEE OIL & GAS ONSHORE LP

Well Name	Date	Benzene (ug/L)	Toluene (ug/L)	Ethylbenzene (ug/L)	Xylenes (ug/L)	Depth Water/ (Product Thickness) (ft bgs)
MW07	02/25/2006	<1.0	<1.0	<1.0	<1.0	7.34
	05/15/2006	<1.0	<1.0	<1.0	<1.0	7.48
	08/16/2006	<1.0	<1.0	<1.0	<1.0	10.33
	11/07/2006	<1.0	<1.0	<1.0	<1.0	9.40
	02/20/2007	<1.0	<1.0	<1.0	<1.0	NM
	05/15/2007	<1.0	<1.0	<1.0	<1.0	5.70
	08/15/2007	<1.0	<1.0	<1.0	<1.0	6.89
	11/14/2007	<1.0	<1.0	<1.0	<1.0	7.13
	02/19/2008	<1.0	<1.0	<1.0	<1.0	6.92
	05/31/2008	<1.0	<1.0	<1.0	<1.0	8.09
	08/26/2008	<1.0	<1.0	<1.0	<1.0	10.01
	12/01/2008	<1.0	<1.0	<1.0	<1.0	7.05
	02/25/2009	<1.0	<1.0	<1.0	<1.0	8.76
	05/27/2009	<1.0	<1.0	<1.0	<1.0	6.33
	08/24/2009	<1.0	<1.0	<1.0	<1.0	7.67
	11/10/2009	<1.0	<1.0	<1.0	<1.0	7.89
	02/12/2010	<1.0	<1.0	<1.0	<1.0	7.74
	05/04/2010	<1.0	<1.0	<1.0	<1.0	6.12
	08/27/2010	<1.0	<1.0	<1.0	<1.0	8.12
	11/16/2010	<1.0	<1.0	<1.0	<1.0	7.95
	02/22/2011	<1.0	<1.0	<1.0	<1.0	8.47
	05/10/2011	<1.0	<1.0	<1.0	<1.0	8.23
	08/25/2011	<1.0	<1.0	<1.0	<1.0	7.51
	11/18/2011	<1.0	<1.0	<1.0	<1.0	7.04
	02/21/2012	<1.0	<1.0	<1.0	<1.0	7.06
	05/29/2012	<1.0	<1.0	<1.0	<1.0	6.97
	08/31/2012	<1.0	<1.0	<1.0	<1.0	10.01
	11/26/2012	<1.0	<1.0	<1.0	<1.0	8.92
	02/28/2013	<1.0	<1.0	<1.0	<1.0	9.35
	05/28/2013	<1.0	<1.0	<1.0	<1.0	7.04
	08/27/2013	<1.0	<1.0	<1.0	<1.0	10.22
	11/20/2013	<1.0	<1.0	<1.0	<1.0	8.63



TABLE 1 (Continued)
GROUNDWATER ANALYTICAL AND FIELD RESULTS
UPRR 38 PAN AM G #1
WELD COUNTY, COLORADO
KERR-MCGEE OIL & GAS ONSHORE LP

Well Name	Date	Benzene (ug/L)	Toluene (ug/L)	Ethylbenzene (ug/L)	Xylenes (ug/L)	Depth Water/ (Product Thickness) (ft bgs)
MW08	02/25/2006	<1.0	<1.0	<1.0	<1.0	7.90
	05/15/2006	<1.0	<1.0	<1.0	<1.0	7.80
	08/16/2006	<1.0	<1.0	<1.0	<1.0	10.69
	11/07/2006	<1.0	<1.0	<1.0	<1.0	9.52
	02/20/2007	<1.0	<1.0	<1.0	<1.0	NM
	05/15/2007	<1.0	<1.0	<1.0	<1.0	5.92
	08/15/2007	<1.0	<1.0	<1.0	<1.0	7.19
	11/14/2007	<1.0	<1.0	<1.0	<1.0	7.46
	02/19/2008	<1.0	<1.0	<1.0	<1.0	6.36
	05/31/2008	<1.0	<1.0	<1.0	<1.0	7.04
	08/26/2008	4.0	<1.0	<1.0	<1.0	7.75
	12/01/2008	<1.0	<1.0	<1.0	<1.0	6.47
	02/25/2009	<1.0	<1.0	<1.0	<1.0	7.74
	05/27/2009	<1.0	<1.0	<1.0	<1.0	5.51
	08/24/2009	<1.0	<1.0	<1.0	<1.0	7.04
	11/10/2009	<1.0	<1.0	<1.0	<1.0	7.02
	02/12/2010	<1.0	<1.0	<1.0	<1.0	6.97
	05/04/2010	<1.0	<1.0	<1.0	<1.0	5.31
	08/27/2010	<1.0	<1.0	<1.0	<1.0	7.33
	11/16/2010	<1.0	<1.0	<1.0	<1.0	7.10
	02/22/2011	<1.0	<1.0	<1.0	<1.0	7.63
	05/10/2011	<1.0	<1.0	<1.0	<1.0	7.40
	08/25/2011	<1.0	<1.0	<1.0	<1.0	6.67
	11/18/2011	<1.0	<1.0	<1.0	<1.0	6.24
	02/21/2012	<1.0	<1.0	<1.0	<1.0	6.20
	05/29/2012	<1.0	<1.0	<1.0	<1.0	6.18
	08/31/2012	<1.0	<1.0	<1.0	<1.0	9.07
	11/26/2012	<1.0	<1.0	<1.0	<1.0	7.97
	02/28/2013	<1.0	<1.0	<1.0	<1.0	8.46
	05/28/2013	<1.0	<1.0	<1.0	<1.0	6.15
	08/27/2013	<1.0	<1.0	<1.0	<1.0	9.46
	11/20/2013	<1.0	<1.0	<1.0	<1.0	7.80
MW09	02/25/2006	89	7.0	120	420	7.05
	05/15/2006	59	<1.0	81	290	7.21
	08/16/2006	40	<1.0	230	780	9.65
	11/07/2006	36	<1.0	86	420	9.79
	02/20/2007	21	<1.0	33	58	NM
	05/15/2007	39	<1.0	<1.0	<1.0	5.05
	08/15/2007	22	<1.0	<1.0	<1.0	6.62
	11/14/2007	49	<1.0	<1.0	<1.0	7.00

MW09 destroyed as of 2/19/2008



TABLE 1 (Continued)
GROUNDWATER ANALYTICAL AND FIELD RESULTS
UPRR 38 PAN AM G #1
WELD COUNTY, COLORADO
KERR-MCGEE OIL & GAS ONSHORE LP

Well Name	Date	Benzene (ug/L)	Toluene (ug/L)	Ethylbenzene (ug/L)	Xylenes (ug/L)	Depth Water/ (Product Thickness) (ft bgs)
MW09R	02/19/2008	Dry - Not Sampled				Dry
	05/31/2008	16	<1.0	44	73	7.11
	08/26/2008	11	<1.0	7.6	7.7	9.84
	12/01/2008	13	<1.0	2.4	<1.0	5.19
	02/25/2009	1.6	<1.0	<1.0	<1.0	7.82
	05/27/2009	2.0	<1.0	<1.0	<1.0	5.88
	08/24/2009	2.4	<1.0	<1.0	<1.0	6.85
	11/10/2009	<1.0	<1.0	<1.0	<1.0	7.29
	02/12/2010	<1.0	<1.0	<1.0	<1.0	6.92
	05/04/2010	<1.0	<1.0	<1.0	<1.0	5.33
	08/27/2010	<1.0	<1.0	<1.0	<1.0	7.47
	11/16/2010	<1.0	<1.0	<1.0	<1.0	7.28
	02/22/2011	<1.0	<1.0	<1.0	<1.0	7.61
	05/10/2011	<1.0	<1.0	<1.0	<1.0	7.45
	08/25/2011	Removed from monitoring				NM
MW10	05/31/2011	<1.0	<1.0	<1.0	<1.0	4.08
	08/25/2011	<1.0	<1.0	<1.0	<1.0	5.55
	11/18/2011	<1.0	<1.0	<1.0	<1.0	5.46
	02/21/2012	<1.0	<1.0	<1.0	<1.0	4.87
	05/29/2012	<1.0	<1.0	<1.0	<1.0	4.87
	08/31/2012	<1.0	<1.0	<1.0	<1.0	7.01
	11/26/2012	<1.0	<1.0	<1.0	<1.0	8.20
	02/28/2013	Not Found - Not Sampled/construction				Not Found
	05/28/2013	Not Found - Not Sampled				Not Found
MW10 destroyed as of 8/27/2013						
MW11	05/31/2011	<1.0	<1.0	<1.0	<1.0	3.52
	08/25/2011	<1.0	<1.0	<1.0	<1.0	4.93
	11/18/2011	<1.0	<1.0	<1.0	<1.0	4.78
	02/21/2012	<1.0	<1.0	<1.0	<1.0	4.29
	05/29/2012	<1.0	<1.0	<1.0	<1.0	4.29
	08/31/2012	<1.0	<1.0	<1.0	<1.0	6.85
	11/26/2012	Not Found - Not Sampled				Not Found
	02/28/2013	Not Found - Not Sampled/construction				Not Found
	05/28/2013	Not Found - Not Sampled				Not Found
MW11 destroyed as of 8/27/2013						



TABLE 1 (Continued)
GROUNDWATER ANALYTICAL AND FIELD RESULTS
UPRR 38 PAN AM G #1
WELD COUNTY, COLORADO
KERR-MCGEE OIL & GAS ONSHORE LP

Well Name	Date	Benzene (ug/L)	Toluene (ug/L)	Ethylbenzene (ug/L)	Xylenes (ug/L)	Depth Water/ (Product Thickness) (ft bgs)
XCEL05	02/25/2005	730	<3.0	140	179.3	NM
	05/12/2005	330	<1.0	52	67	NM
	08/18/2005	97	<1.0	170	190	7.61
	11/15/2005	320	<1.0	290	920	NM
	02/25/2006	230	<1.0	240	840	NM
	05/15/2006	<1.0	<1.0	<1.0	<1.0	NM
	08/28/2006	310	<1.0	260	840	NM
	11/07/2006	190	<1.0	300	460	NM
	02/20/2007	49	<1.0	81	5.4	NM
	05/15/2007	9.6	<1.0	56	480	NM
	08/15/2007	<1.0	<1.0	<1.0	<1.0	NM
	11/14/2007	13	<1.0	<1.0	<1.0	NM
XCEL05 destroyed as of 2/19/2008						
XCEL05R	02/27/2008	190	1.2	100	1200	NM
	05/31/2008	140	<1.0	94	760	NM
	08/29/2008	110	<1.0	3.1	<1.0	NM
	12/01/2008	Inaccessible - Not Sampled				Inaccessible
	02/25/2009	7.8	<1.0	1.7	2.9	7.05
	05/27/2009	20	<1.0	<1.0	<1.0	5.21
	08/24/2009	91	<1.0	3.5	24	6.23
	11/10/2009	120	<1.0	17	6.5	6.74
	02/12/2010	130	<1.0	27	130	6.28
	05/04/2010	87	<1.0	18	77	4.68
	08/27/2010	110	<1.0	18	3.0	6.58
	11/16/2010	210	<1.0	26	3.3	6.66
	02/22/2011	130	<1.0	17	14	6.95
	05/10/2011	190	<1.0	<1.0	<1.0	6.64
	08/25/2011	120	<1.0	20	5.7	6.14
	11/18/2011	250	<1.0	9.8	<1.0	4.93
	02/21/2012	150	<1.0	6.5	<1.0	5.35
	05/29/2012	75	<1.0	<1.0	<1.0	5.35
	08/31/2012	58	<1.0	<1.0	<1.0	7.84
	11/26/2012	<1.0	<1.0	<1.0	<1.0	8.69
	02/28/2013	4.3	<1.0	<1.0	<1.0	7.93
	05/28/2013	2.9	<1.0	<1.0	<1.0	5.77
	08/27/2013	Inaccessible - Not Sampled				Inaccessible
	08/30/2013	1.1	<1.0	<1.0	<1.0	7.88
	11/20/2013	91.2	<1.0	3.6	2.4	7.35



TABLE 1 (Continued)
GROUNDWATER ANALYTICAL AND FIELD RESULTS
UPRR 38 PAN AM G #1
WELD COUNTY, COLORADO
KERR-MCGEE OIL & GAS ONSHORE LP

Well Name	Date	Benzene (ug/L)	Toluene (ug/L)	Ethylbenzene (ug/L)	Xylenes (ug/L)	Depth Water/ (Product Thickness) (ft bgs)
XCEL06	02/25/2005	2.0	<1.0	<1.0	3.0	NM
	05/12/2005	2.5	<1.0	1.1	2.5	NM
	08/18/2005	<1.0	<1.0	<1.0	<2.0	7.36
	11/15/2005	<1.0	<1.0	<1.0	<2.0	NM
	02/25/2006	<1.0	<1.0	<1.0	<1.0	NM
	05/15/2006	<1.0	<1.0	<1.0	<1.0	NM
	08/28/2006	<1.0	<1.0	<1.0	<1.0	NM
	11/07/2006	<1.0	<1.0	<1.0	<1.0	NM
	02/20/2007	<1.0	<1.0	<1.0	<1.0	NM
	05/15/2007	<1.0	<1.0	<1.0	<1.0	NM
	08/15/2007	<1.0	<1.0	<1.0	<1.0	NM
	11/14/2007	8.8	1.0	2.9	330	NM
	02/19/2008	<1.0	<1.0	<1.0	<1.0	NM
	05/31/2008	1.4	<1.0	<1.0	<1.0	NM
	08/29/2008	<1.0	<1.0	<1.0	<1.0	NM
	12/01/2008	Inaccessible - Not Sampled				Inaccessible
	02/25/2009	<1.0	<1.0	<1.0	<1.0	6.28
	05/27/2009	<1.0	<1.0	<1.0	<1.0	4.75
	08/24/2009	Not Sampled				NM
	11/10/2009	<1.0	<1.0	<1.0	<1.0	6.83
	02/12/2010	4.2	<1.0	<1.0	<1.0	5.61
	05/04/2010	16	<1.0	<1.0	<1.0	4.11
	08/27/2010	26	<1.0	<1.0	<1.0	6.57
	11/16/2010	41	<1.0	<1.0	<1.0	6.00
	02/22/2011	<1.0	<1.0	<1.0	<1.0	NM
	05/10/2011	2.4	<1.0	<1.0	<1.0	6.05
	08/25/2011	6.9	<1.0	<1.0	<1.0	5.43
	11/18/2011	<1.0	<1.0	<1.0	<1.0	4.31
	02/21/2012	1.1	<1.0	<1.0	<1.0	4.80
	05/29/2012	42	<1.0	<1.0	<1.0	4.80
	08/31/2012	78	<1.0	<1.0	<1.0	6.95
	11/26/2012	<1.0	<1.0	<1.0	<1.0	8.00
	02/28/2013	11	<1.0	<1.0	<1.0	7.46
	05/28/2013	3.5	<1.0	<1.0	<1.0	5.15
	08/27/2013	Inaccessible - Not Sampled				Inaccessible
	08/30/2013	<1.0	<1.0	<1.0	<1.0	NM
	11/20/2013	<1.0	<1.0	<1.0	<1.0	6.75



TABLE 1 (Continued)
GROUNDWATER ANALYTICAL AND FIELD RESULTS
UPRR 38 PAN AM G #1
WELD COUNTY, COLORADO
KERR-MCGEE OIL & GAS ONSHORE LP

Well Name	Date	Benzene (ug/L)	Toluene (ug/L)	Ethylbenzene (ug/L)	Xylenes (ug/L)	Depth Water/ (Product Thickness) (ft bgs)
Colo GW Quality Standards		5	1000	680	10000	

Notes: NM - Not Measured

ug/L - micrograms per Liter

NA - Not Analyzed/Not Available

GW - Groundwater

ft bgs - feet below ground surface

< - less than laboratory reporting limit

Bold numbers indicate result equaled or exceeded standard.

