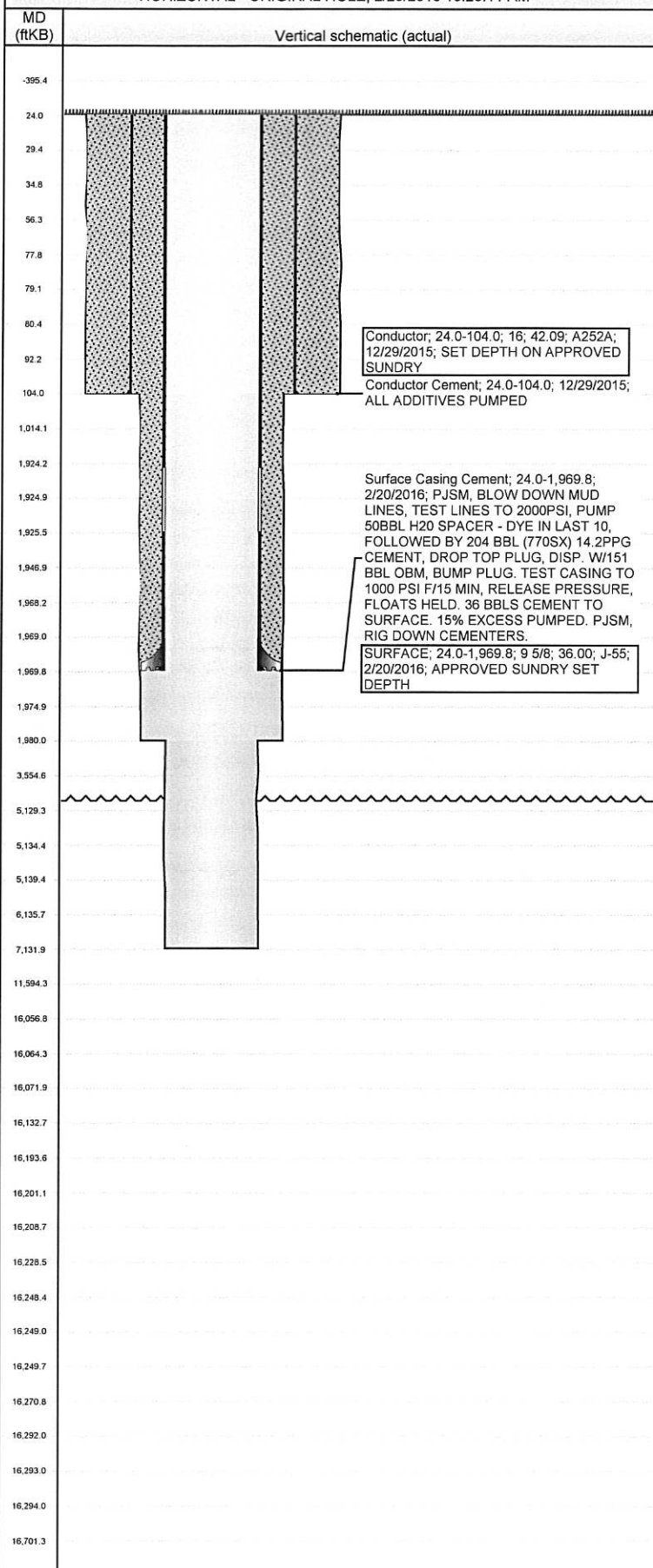


Well Name: **WELLS RANCH BB01-624**

HORIZONTAL - ORIGINAL HOLE, 2/25/2016 10:23:11 AM



Well Header

API 05-123-41991	Business Unit DJ BASIN	District 15	Well Config HORIZONTAL
Original KB Elevation (ft) 4,686.00	KB - GL / MSL (ftKB) 24.00	Spud Date 2/20/2016	P & A Date

Comment

****TIGHT HOLE STATUS****

APPROVED SUNDRIES ATTACHED FOR CEMENTED MONOBORE DRILLING PLAN & BHL CHANGES

PER COGCC LOGGING REQUIREMENTS RULE 317.p - NO LOG EXCEPTIONS

NBL/DRILLING WILL RUN ONE OPEN HOLE RESISTIVITY LOG ON ONE OF THE FIRST WELLS ON THIS 4 WELL PAD - AF05-13-A (COGCC LOCATION ID #416069)

UP-TO-DATE FORMATION TOPS WILL BE PROVIDED BY THE GEOLOGIST IN THE PRE-SPUD PACKAGE

SEND LOG / HORIZONTAL SURVEY INFORMATION TO PERSON NOTED ON BOTTOM OF PROGNOSIS

Directions To Well

WCR 68 & WCR 67: EAST 0.25 MILE (WELLS RANCH MAIN GATE), SOUTH 0.75 MILE, SOUTHEAST 0.25 MILE, SOUTH 0.8 MILE, EAST 3.5 MILES, SOUTH 1.9 MILES, EAST INTO LOCATION

Congressional Location

Quarter 1	Quarter 2	Quarter 3	Quarter 4	Section	Township	Twnshp N...	Range	Rng E/W Dir
		SW	SW	5	5	N	62	W

Bottom Hole Location

North-South Distance (ft)	From N or S Line	East-West Distance (ft)	From E or W Line
1,150.0	FSL	535.0	FWL

Plug Back Total Depths

Date	Depth (ftKB)	Method	Com
		CASING TALLY	FLOAT COLLAR

Wellbore Sections

Section Des	Size (in)	Act Top, MD (ftKB)	Act Btm, MD (ftKB)
CONDUCTOR	24	24.0	104.0
SURFACE	13 1/2	104.0	1,980.0
PRODUCTION	8 1/2	1,980.0	7,132.0

Zone Statuses

Zone Name	Status Date	Status	Fluid Type	Job	Prod Method

Casing Strings

Conductor, 104.0ftKB

Casing Description	Run Date	OD (in)	Wt/Len (l...)	Grade	Top, MD (ft...)	MD (ftKB)
Conductor	12/29/2015	16	42.09	A252A	24.0	104.0

SURFACE, 1,969.8ftKB

Casing Description	Run Date	OD (in)	Wt/Len (l...)	Grade	Top, MD (ft...)	MD (ftKB)
SURFACE	2/20/2016	9 5/8	36.00	J-55	24.0	1,969.8

LINER, 16,294.0ftKB

Casing Description	Run Date	OD (in)	Wt/Len (l...)	Grade	Top, MD (ft...)	MD (ftKB)
LINER		5 1/2	20.00	P-110IC	77.6	16,294.0

Cement

Description	Top Depth (ftKB)	Bottom Depth (ftKB)
Conductor Cement	24.0	104.0
Surface Casing Cement	24.0	1,969.8

Tubing Strings

Tubing Description	Run Date	String...	ID (in)	Wt (lb/ft)	Grade	Len (ft)	Set De...

Perforation Data

Zone	Bnch/St g	Entered Shot Total	Top (ftKB)	Btm (ftKB)	Date

Other In Hole

Run Date	Des	OD (in)	Top (ftKB)	Btm (ftKB)

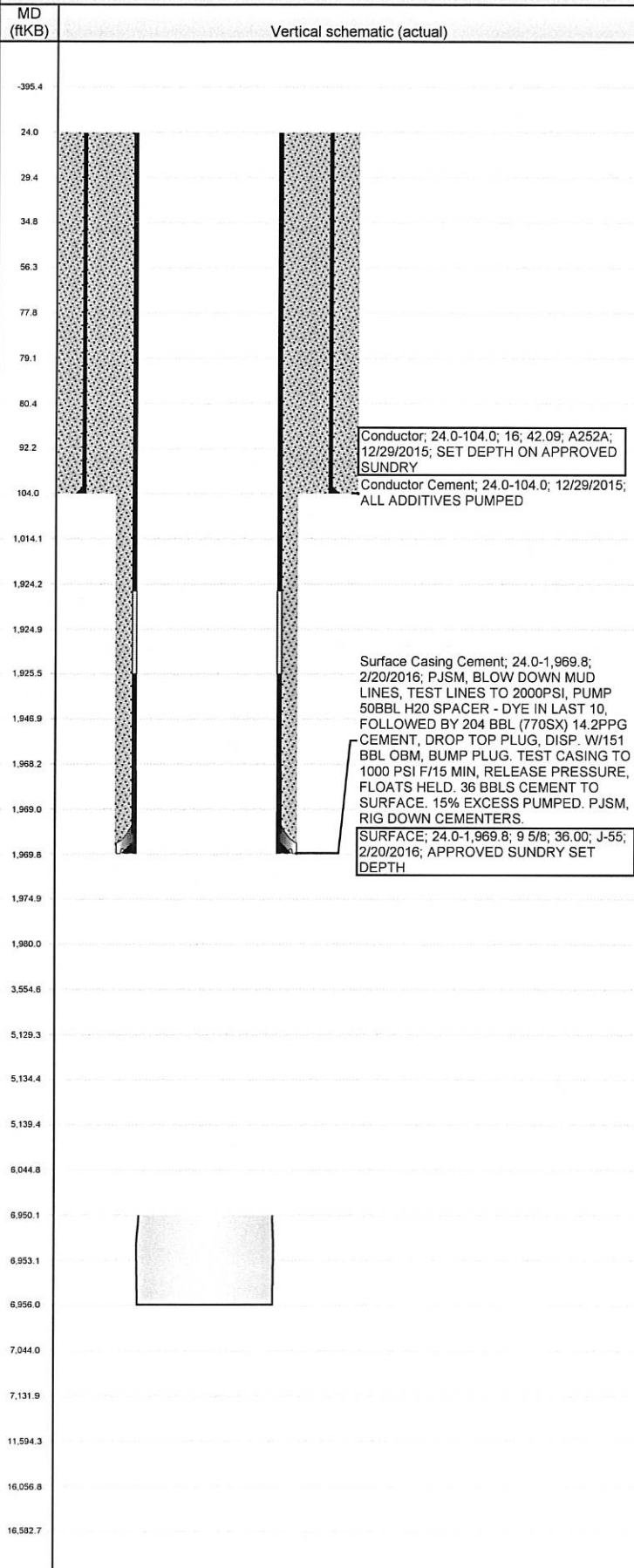
Logs

Date	Type	Top, MD (ftKB)	Btm, MD (ftKB)

Wellbore Schematic Input Report

Well Name: WELLS RANCH BB01-624

HORIZONTAL - ST 01, 2/25/2016 10:23:21 AM



Well Header

API 05-123-41991	Business Unit DJ BASIN	District 15	Well Config HORIZONTAL
Original KB Elevation (ft) 4,686.00	KB - GL / MSL (ftKB) 24.00	Spud Date 2/20/2016	P & A Date

Comment

TIGHT HOLE STATUS

APPROVED SUNDRIES ATTACHED FOR CEMENTED MONOBORE DRILLING PLAN & BHL CHANGES

PER COGCC LOGGING REQUIREMENTS RULE 317.p - NO LOG EXCEPTIONS

NBL/DRILLING WILL RUN ONE OPEN HOLE RESISTIVITY LOG ON ONE OF THE FIRST WELLS ON THIS 4 WELL PAD - AF05-13-A (COGCC LOCATION ID #416069)

UP-TO-DATE FORMATION TOPS WILL BE PROVIDED BY THE GEOLOGIST IN THE PRE-SPUD PACKAGE

SEND LOG / HORIZONTAL SURVEY INFORMATION TO PERSON NOTED ON BOTTOM OF PROGNOSIS

Directions To Well

WCR 68 & WCR 67: EAST 0.25 MILE (WELLS RANCH MAIN GATE), SOUTH 0.75 MILE, SOUTHEAST 0.25 MILE, SOUTH 0.8 MILE, EAST 3.5 MILES, SOUTH 1.9 MILES, EAST INTO LOCATION

Congressional Location

Quarter 1	Quarter 2	Quarter 3	Quarter 4	Section	Township	Twntshp N...	Range	Rng E/W Dir
		SW	SW	5	5	N	62	W

Bottom Hole Location

North-South Distance (ft)	From N or S Line	East-West Distance (ft)	From E or W Line

Plug Back Total Depths

Date	Depth (ftKB)	Method	Com

Wellbore Sections

Section Des	Size (in)	Act Top, MD (ftKB)	Act Btm, MD (ftKB)
PRODUCTION	8 1/2	6,950.0	6,956.0

Zone Statuses

Zone Name	Status Date	Status	Fluid Type	Job	Prod Method

Casing Strings

Conductor, 104.0ftKB

Casing Description	Run Date	OD (in)	Wt/Len (l...)	Grade	Top, MD (ft...)	MD (ftKB)
Conductor	12/29/2015	16	42.09	A252A	24.0	104.0

SURFACE, 1,969.8ftKB

Casing Description	Run Date	OD (in)	Wt/Len (l...)	Grade	Top, MD (ft...)	MD (ftKB)
SURFACE	2/20/2016	9 5/8	36.00	J-55	24.0	1,969.8

LINER, 16,294.0ftKB

Casing Description	Run Date	OD (in)	Wt/Len (l...)	Grade	Top, MD (ft...)	MD (ftKB)
LINER		5 1/2	20.00	P-110IC	77.6	16,294.0

Cement

Description	Top Depth (ftKB)	Bottom Depth (ftKB)
Conductor Cement	24.0	104.0
Surface Casing Cement	24.0	1,969.8

Tubing Strings

Tubing Description	Run Date	String...	ID (in)	Wt (lb/ft)	Grade	Len (ft)	Set De...

Perforation Data

Zone	Bnch/St g	Entered Shot Total	Top (ftKB)	Btm (ftKB)	Date

Other In Hole

Run Date	Des	OD (in)	Top (ftKB)	Btm (ftKB)

Logs

Date	Type	Top, MD (ftKB)	Btm, MD (ftKB)