

Field Ticket Number: 0901631697	Field Ticket Date: Friday, September 05, 2014	Planning Order #: NA
Bill To: GREAT WESTERN OIL & GAS LLC - eBUS, DONOTMAIL-1801 BROADWAY STE 500, DENVER, CO, 80202	Job Name: 9 5/8 Surface Order Type: ZOH Well Name: SCHMUNK -EF- 31-367 HN Company Code: 1100 Customer PO No.: W10555 Shipping Point: FORT LUPTON Shipping Point Sales Office: ROCKY MOUNTAINS BD Well Type: HORIZONTAL OIL Well Category: Development	
Ship To: SCHMUNK -EF- 31-367 HN,WELD, EATON, CO, 80615		

Material	Description	QTY	UOM	Unit Amount	Gross Amount	Discount	Net Amount
	CMT SURFACE CASING BOM Cementing Services & Equipment	1	JOB	0.00	0.00		0.00
	CMT, ROCKIES SG SETUP	1	EA	10,993.00	10,993.00	6570.16	4,422.84
	CMT, ROCKIES SG MILEAGE	25	MI	0.00	0.00		0.00
	CMT, ROCKIES SG DELIVERY Cementing Materials	25	TNM	0.00	0.00		0.00
	CMT, SwiftCem (TM) system	430	SK	58.97	25,358.69	17243.91	8,114.78
	MILEAGE FOR CEMENTING CREW Number of Units	60 1	MI	5.76	345.60	235.01	110.59
	ZI-MILEAGE FROM NEAREST HES BASE,/UNIT Number of Units	60 1	MI	9.79	587.40	399.43	187.97
	MILEAGE,CMT MTLs DEL/RET MIN NUMBER OF TONS	30 21.435	MI	71.81	2,154.22	1464.87	689.35
	HANDLE&DUMP SVC CHRg, CMT&ADDITIVES,ZI NUMBER OF EACH Unit of Measurement	476 1 EA	CF	5.49	2,613.24	1777.00	836.24
	ZI - PUMPING CHARGE DEPTH FEET/METERS (FT/M)	1 1056 FT	EA	5,290.00	5,290.00	3597.20	1,692.80
	ZI FUEL SURCHG-CARS/PICKUPS<1 1/2TON Number of Units	60 1	MI	0.23	13.80		13.80
	ZI FUEL SURCHG-HEAVY TRKS >1 1/2 TON Number of Units	60 1	MI	0.68	40.80		40.80
	FUEL SURCHG-CMT & CMT ADDITIVES NUMBER OF TONS RED DYE	30 21.435	MI	4.93	147.90		147.90
	SPEC EQUIP CHRg, NO PRICE ESTABLISHED ZI	2	EA	160.00	320.00		320.00
	SBM, CMT- MUD FLUSH III	10	BBL	94.45	944.50	642.26	302.24
	CHEM, SUGAR,GRANULATED, 50LB BAG	100	LB	6.96	696.00	473.28	222.72
Totals USD					\$ 49,505.15	\$ 32,403.12	\$ 17,102.03

Field Ticket Signature

Field Ticket Number: 0901631697 Field Ticket Date: Friday, September 05, 2014 Planning Order #: NA

Bill To:
GREAT WESTERN OIL & GAS LLC - eBUS,
DONOTMAIL-1801 BROADWAY STE 500,
DENVER, CO, 80202

Job Name: 9 5/8 Surface
Order Type: ZOH
Well Name: SCHMUNK -EF- 31-367 HN
Company Code: 1100
Customer PO No.: W10555
Shipping Point: FORT LUPTON Shipping Point
Sales Office: ROCKY MOUNTAINS BD
Well Type: HORIZONTAL OIL
Well Category: Development

Ship To:
SCHMUNK -EF- 31-367 HN,WELD,
EATON, CO, 80615

THIS OUTPUT DOES NOT INCLUDE TAXES. APPLICABLE SALES TAX WILL BE BILLED ON THE FINAL INVOICE. CUSTOMER HEREBY ACKNOWLEDGES RECEIPT OF THE MATERIALS AND SERVICES DESCRIBED ABOVE, ON ANY PRECEDING PAGES, AND ATTACHED DOCUMENTS.

Gross Amount Total: \$ 49,505.15
Item Discount Total: \$ 32,403.12
Net Amount Total: \$ 17,102.03 USD

Customer Representative Signature: _____

Date: _____

SHANNON DAVIS
Customer Representative

Eric Fuchs
Halliburton Representative

Was our HSE performance satisfactory? (Health, Safety, Environment)

Yes No

Were you satisfied with our equipment?

Yes No

Were you satisfied with our people?

Yes No

Comments:

The Road to Excellence Starts with Safety

Sold To #: 346459	Ship To #: 3353939	Quote #:	Sales Order #: 0901631697
Customer: GREAT WESTERN OIL & GAS LLC - eBUS		Customer Rep: SHANNON DAVIS	
Well Name: SCHMUNK -EF-	Well #: 31-367 HN	API/UWI #: 05-123-38931-00	
Field: WATTENBERG	City (SAP): EATON	County/Parish: WELD	State: COLORADO
Legal Description: NW NE-31-7N-65W-528FNL-1974FEL			
Contractor:		Rig/Platform Name/Num: Craig 7	
Job BOM: 7521			
Well Type: HORIZONTAL OIL			
Sales Person: HALAMERICA\H117930		Srv Supervisor: Eric Fuchs	
Job			

Formation Name	
Formation Depth (MD)	Top Bottom
Form Type	BHST
Job depth MD	1056ft Job Depth TVD
Water Depth	Wk Ht Above Floor 5
Perforation Depth (MD)	From To

Well Data

Description	New / Used	Size in	ID in	Weight lbm/ft	Thread	Grade	Top MD ft	Bottom MD ft	Top TVD ft	Bottom TVD ft
Casing	0	9.625	8.921	36	LTC	J-55	0	1056	0	0
Open Hole Section			13.5				0	1070	0	1070

Tools and Accessories

Type	Size in	Qty	Make	Depth ft	Type	Size in	Qty	Make
Guide Shoe	9.625				Top Plug	9.625	1	HES
Float Shoe	9.625	1		1056	Bottom Plug	9.625		HES
Float Collar	9.625	1			SSR plug set	9.625		HES
Insert Float	9.625				Plug Container	9.625	1	HES
Stage Tool	9.625				Centralizers	9.625		HES

Miscellaneous Materials

Gelling Agt	Conc	Surfactant	Conc	Acid Type	Qty	Conc
Treatment Fld	Conc	Inhibitor	Conc	Sand Type	Size	Qty

Fluid Data

Stage/Plug #: 1									
Fluid #	Stage Type	Fluid Name	Qty	Qty UoM	Mixing Density lbm/gal	Yield ft ³ /sack	Mix Fluid Gal	Rate bbl/min	Total Mix Fluid Gal
1	Fresh Water Spacer	Mud Flush Ill	10	bbl	8.4			6	
Fluid #	Stage Type	Fluid Name	Qty	Qty UoM	Mixing Density lbm/gal	Yield ft ³ /sack	Mix Fluid Gal	Rate bbl/min	Total Mix Fluid Gal

2	SwiftCem B2	SWIFTCEM (TM) SYSTEM	430 118	Sack Bbls	14.2	1.54		6	7.64	
7.64 Gal		FRESH WATER								
Fluid #	Stage Type	Fluid Name	Qty	Qty UoM	Mixing Density lbm/gal	Yield ft ³ /sack	Mix Fluid Gal	Rate bbl/mi n	Total Mix Fluid Gal	
3	Displacement	Displacement	78	bbl	8.33			6		
Cement Left In Pipe		Amount	42 ft		Reason			Shoe Joint		
Comment										

Signature _____

1.1 Job Event Log

Type	Seq. No.	Activity	Graph Label	Date	Time	Source	Pass-Side Pump Pressure (psi)	Downhole Density (ppg)	Pass-Side Pump Rate (bbl/rmin)	Comment
Event	1	Call Out	Call Out	9/5/2014	01:30:00	USER				CREW IS CALLED OUT
Event	2	Depart from Service Center or Other Site	Depart from Service Center or Other Site	9/5/2014	04:00:00	USER				CREW LEAVES LOCATION
Event	3	Arrive At Loc	Arrive At Loc	9/5/2014	05:45:00	USER				CREW ARRIVES AT LOCATION
Event	4	Other	Fill lines	9/5/2014	07:48:31	COM13	0.00	9.12	0.00	FILL LINES WITH 3 BBLs WATER
Event	5	Test Lines	Test Lines	9/5/2014	07:51:37	COM13	3278.00	9.19	0.00	TEST LINES TO 3000 PSI
Event	6	Pump Spacer 1	Pump Mud Flush III	9/5/2014	07:55:02	COM13	8.00	9.14	0.00	PUMP 10 BBLs MUD FLUSH III
Event	7	Pump Spacer 2	Pump Water Spacer	9/5/2014	08:00:03	COM13	36.00	8.30	2.50	PUMP 10 BBLs RED DYE WATER
Event	8	Pump Cement	Pump Cement	9/5/2014	08:05:17	COM13	71.00	13.58	4.10	PUMP 118 BBLs CEMENT
Event	9	Shutdown	Shutdown	9/5/2014	08:29:42	USER	31.00	0.26	0.00	SHUTDOWN
Event	10	Drop Plug	Drop Plug	9/5/2014	08:32:30	USER	3.00	0.06	0.00	DROP PLUG
Event	11	Pump Displacement	Pump Displacement	9/5/2014	08:33:35	COM13	3.00	0.03	0.00	PUMP 78 BBLs WATER DISPLACEMENT
Event	12	Comment	Comment	9/5/2014	08:41:44	USER	200.00	8.21	0.50	HAD TO SLOW WAY DOWN/ BECAUSE WE WERE NOT GETTING WATER VERY WELL
Event	13	Slow Rate	Slow Rate	9/5/2014	08:44:45	USER	327.00	8.21	2.30	SLOW RATE TO BUMP THE PLUG
Event	14	Bump Plug	Bump Plug	9/5/2014	08:50:55	COM13	403.00	8.24	3.00	BUMP PLUG AND GOT 28 BBLs OF CEMENT TO SURFACE
Event	15	Check Floats	Check Floats	9/5/2014	08:54:10	USER	11.00	8.26	0.00	CHECK FLOATS AND GOT .5 BBLs BACK
Event	16	Comment	Comment	9/5/2014	08:54:52	USER	9.00	8.28	0.00	WE ARE GOING TO DO A CASING TEST TO 2400 PSI FOR 15 MIN

HALLIBURTON

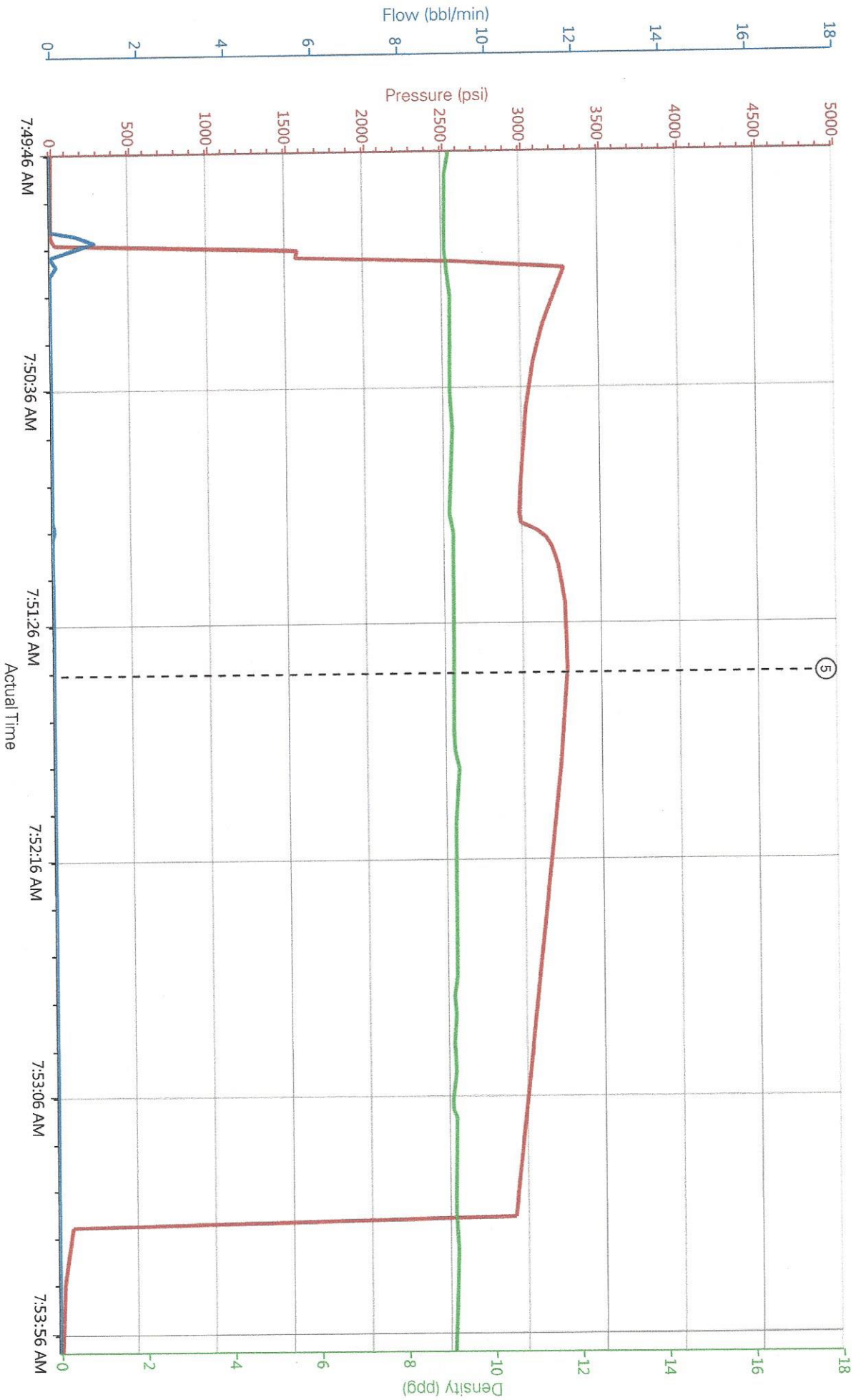
GREAT WESTERN OIL & GAS LLC - eBUS

901631697

Case 1

Event	17	End Job	End Job	9/5/2014	09:14:40	USER	33.00	8.23	0.00	END JOB
Event	18	Depart Location	Depart Location	9/5/2014	10:00:00	USER				CREW LEAVES LOCATION

Great Western Craigs 7 Surface Pressure test



HALLIBURTON | iCem® Service

Customer: GREAT WESTERN OIL & GAS LLC - eBUS
 Representative: Eric Fuchs

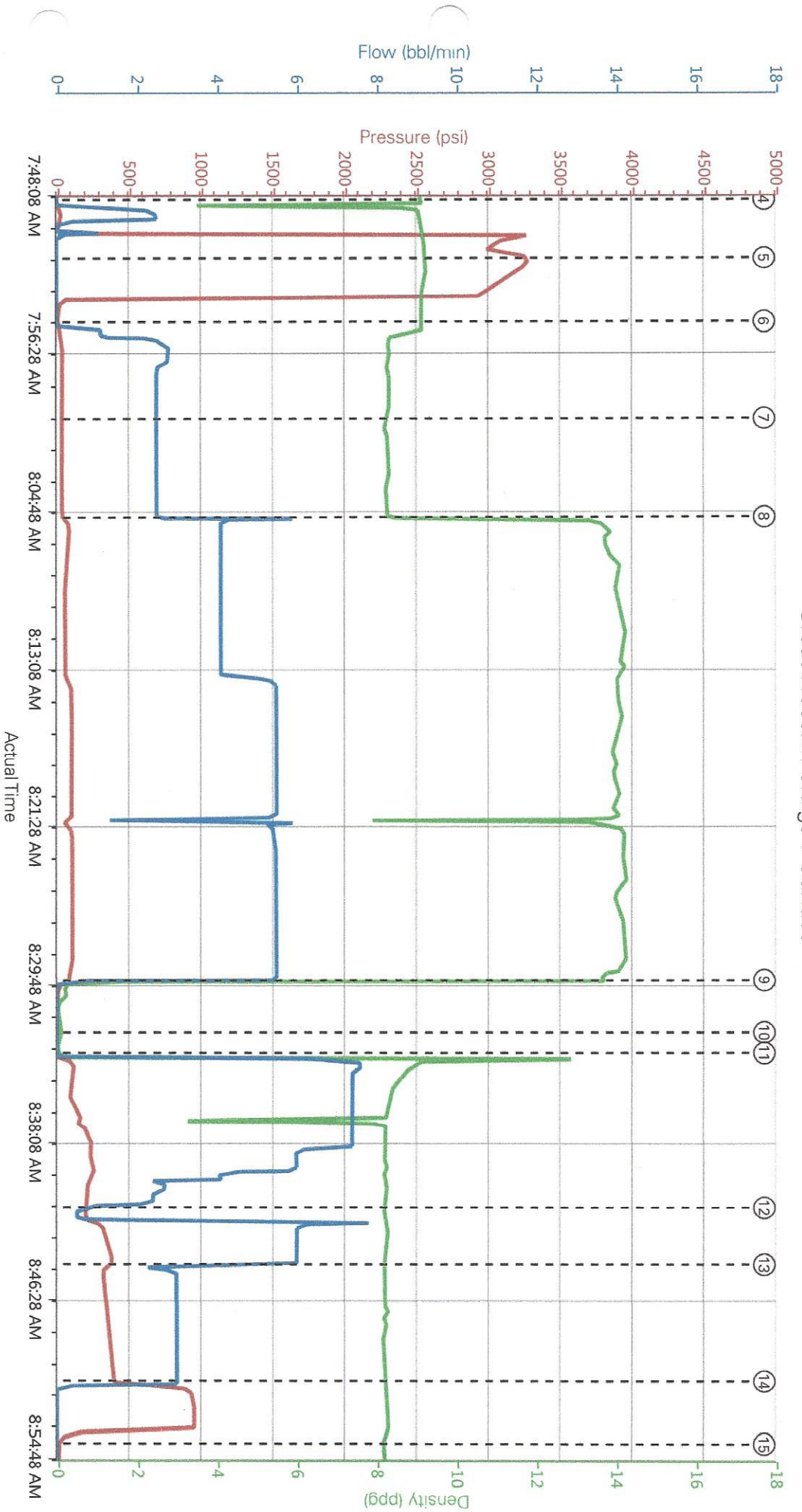
Job Date: 9/5/2014 6:56:10 AM
 Sales Order #: 901631697

Well: Schmunk -EF- 31-367 HN
 Tiger Number: 11501021

Created: 2014-09-05 06:54:04, Version: 3.0.121

Edit

Great Western Craigs 7 Surface



HALLIBURTON | iCem® Service

Customer : GREAT WESTERN OIL & GAS LLC - eBUS
 Representative : Eric Fuchs

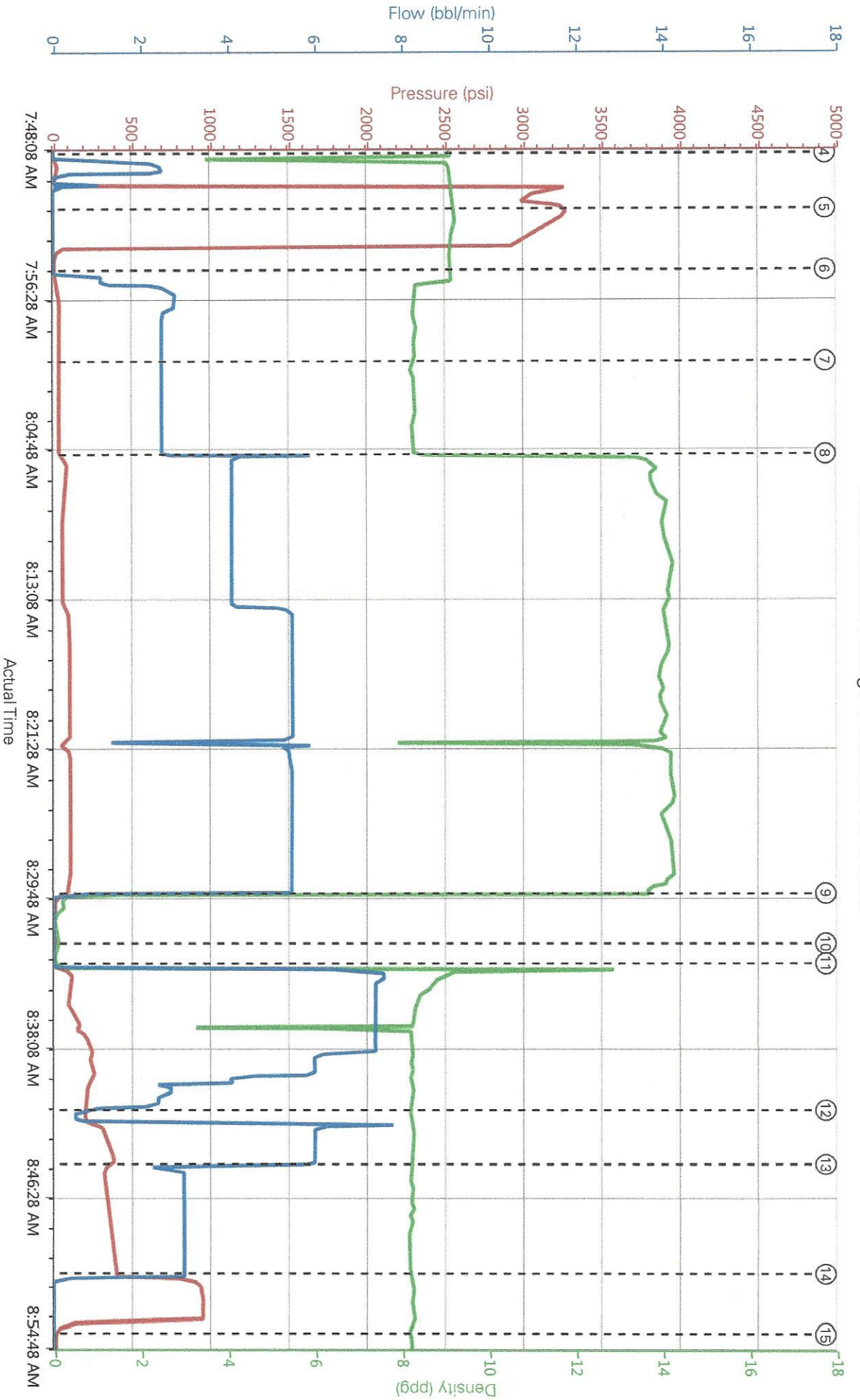
Job Date : 9/5/2014 6:56:10 AM
 Sales Order # : 901631697

Well : Schmunk-EF- 31-367 HN
 Tiger Number : 11501021

Created: 2014-09-05 06:54:04, Version: 3.0.121

Edit

Great Western Craigs 7 Surface No Events



PS Pump Press (psi) 2294 DH Density (ppg) 8.36 PS Pump Rate (bbl/min) 0

HALLIBURTON | Cem® Service

Created: 2014-09-05 06:54:04, Version: 3.0.121

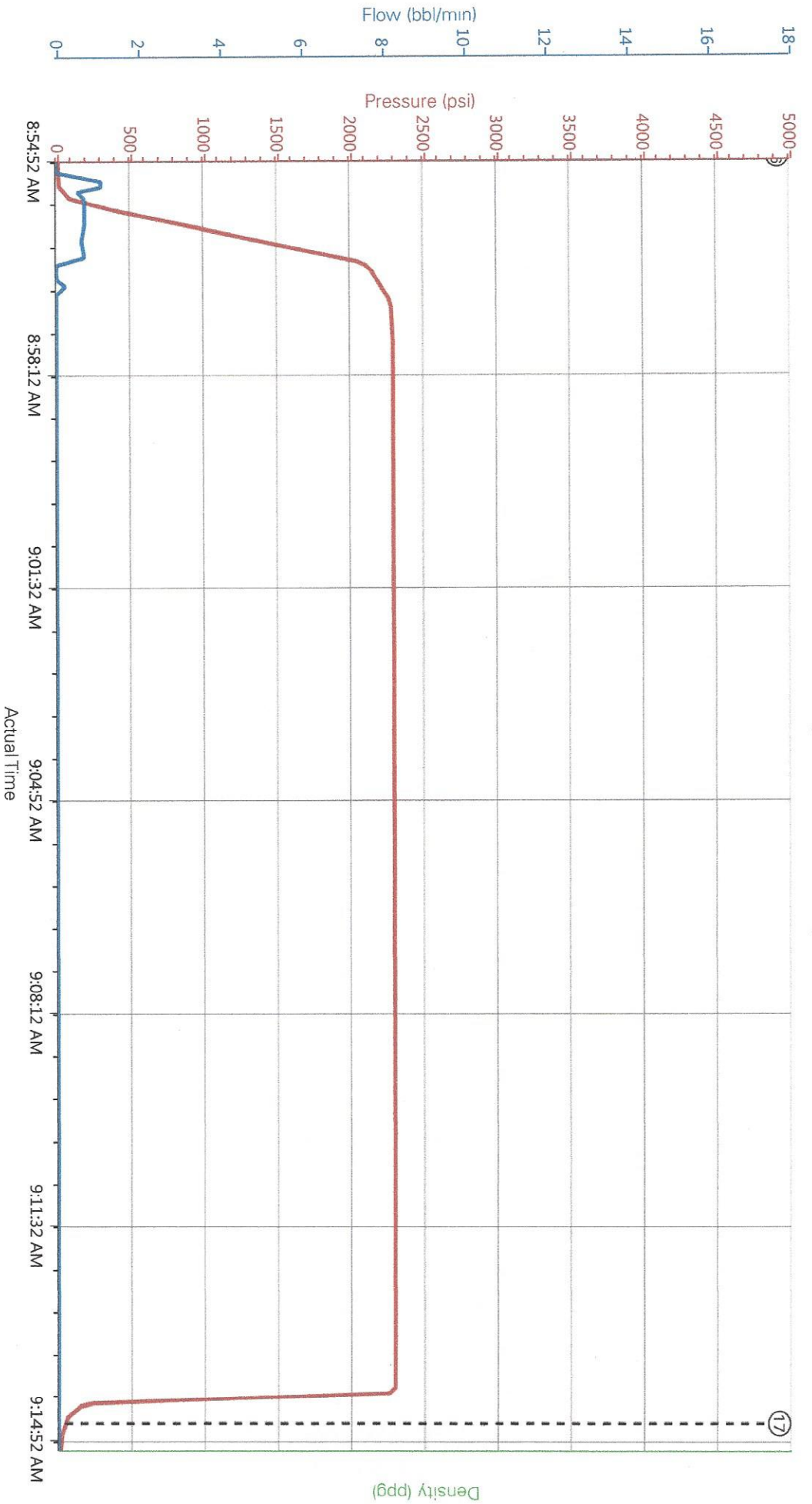
Edit

Customer : GREAT WESTERN OIL & GAS LLC - eBUS
 Representative : Eric Fuchs

Job Date : 9/5/2014 6:56:10 AM
 Sales Order # : 901631697

Well : Schmunk -EF- 31-367 HN
 Tiger Number : 11501021

Great Western Craigs 7 Surface Casing Test



PS Pump Press (psi) 13 DH Density (ppg) 8.19 PS Pump Rate (bbl/min) 0

- ① Call Out n/a:n/a:n/a
- ② Depart from Service Center or Other Site n/a:n/a:n/a
- ③ Arrive At Loc n/a:n/a:n/a
- ④ Fill lines 0:9:12:0
- ⑤ Test Lines 3278:9:19:0
- ⑥ Pump Mud Flush III 8:9:12:0
- ⑦ Pump Water Spacer 368:3:2:5
- ⑧ Pump Cement 71:13:58:4:1
- ⑨ Shutdown 31:0:26:0
- ⑩ Pump Displacement
- ⑪ Comment 200:8:21:0

Customer : GREAT WESTERN OIL & GAS LLC - eBUS Job Date : 9/5/2014 6:56:10 AM Well : Schmunk-EF- 31-367 HN
 Representative : Eric Fuchs Sales Order # : 901631697 Tiger Number : 11501021