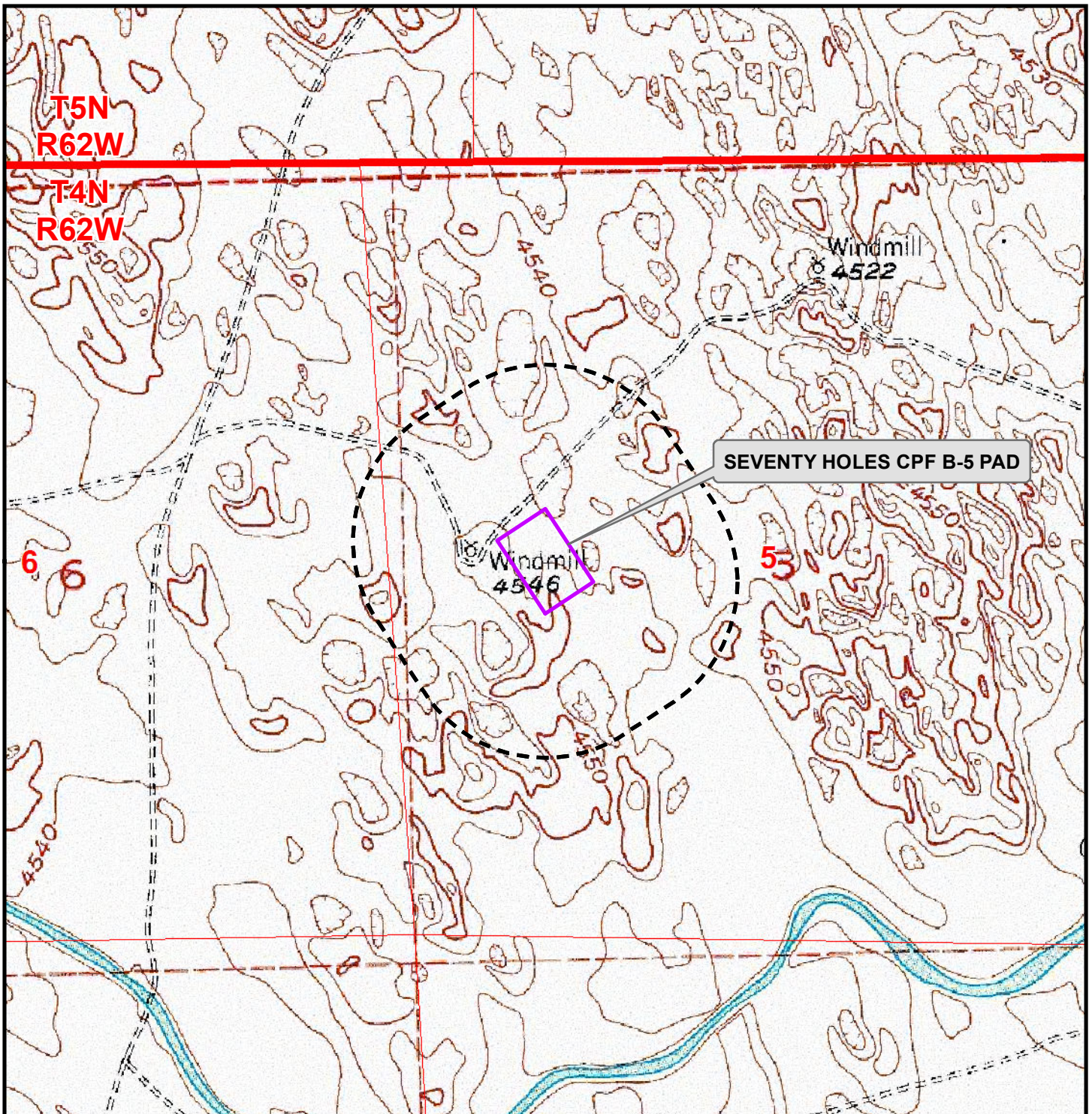


K:\BONANZA CREEK\2014_110_SEVENTY_HOLES_SEC_5_T4N_R62W\GIS\Maps_ABC\SeventyHoles CPF B-5\Hydro.mxd 11/18/2015 11:02:09 AM



Legend

 Disturbance Area  1,000ft Disturbance Buffer

**NO SURFACE WATER FEATURES EXIST WITHIN
±1,000FT OF PROPOSED WELL PAD.**

* All distances measured to nearest point of Disturbance Area

PAD - SEVENTY HOLES CPF B-5

**HYDROLOGY MAP
SEVENTY HOLES CPF B-5 PAD
LOCATED IN SECTION 5
T4N, R62W, 6th P.M.
WELD COUNTY, COLORADO**



**410 17th Street, Suite 1400
Denver, Colorado 80202**



CONSULTING, LLC

SHERIDAN OFFICE
1095 Saberton Avenue
Sheridan, Wyoming 82801
Phone 307-674-0609

LOVELAND OFFICE
1635 Foxtail Drive, Suite 204
Loveland, Colorado 80538
Phone 970-776-4331



SCALE: 1" = 1,000ft

NAD83 CO-Nft

DRAWN: JELO

DATE: 4 Nov 2015

REVISED:

DATE: