

**PROJECT DETAILS: Weld County, CO NAD 83**

Geodetic System: US State Plane 1983  
Datum: North American Datum 1983  
Ellipsoid: GRS 1980  
Zone: Colorado Northern Zone  
System Datum: Mean Sea Level  
Local North: True

Project: Weld County, CO NAD 83  
Site: Anschutz Equus Farms 3-62-4.5 CE2 Pad  
Well: Anschutz Equus Farms 03-62-04-4033C2  
Wellbore: OH  
Design: Plan #1



Azimuths to True North  
Magnetic North: 8.22°

Magnetic Field  
Strength: 52545.3nT  
Dip Angle: 66.91°  
Date: 2/10/2016  
Model: BGGM2015

**SECTION DETAILS**

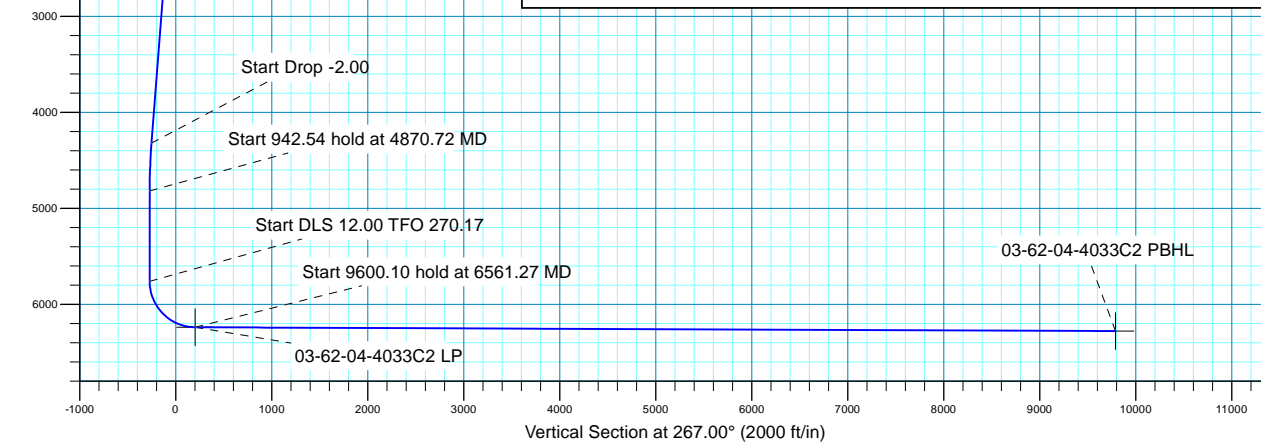
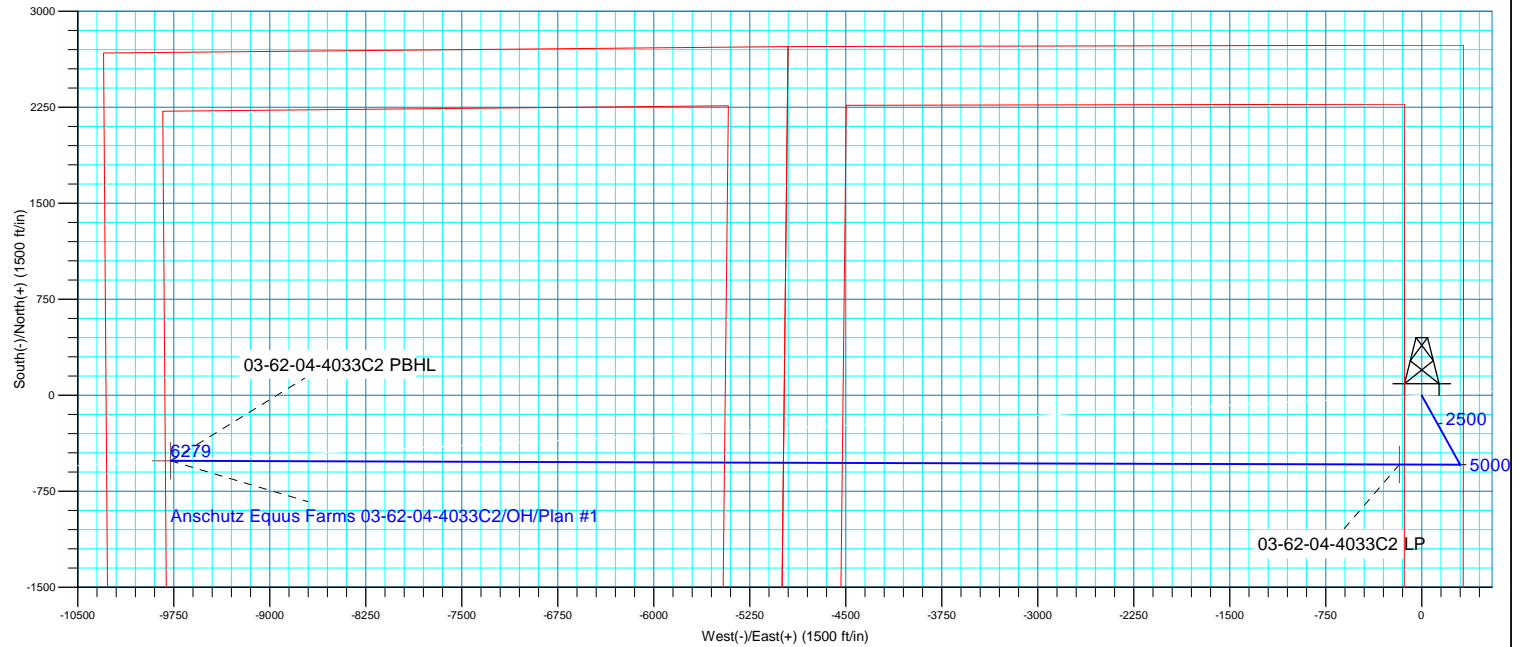
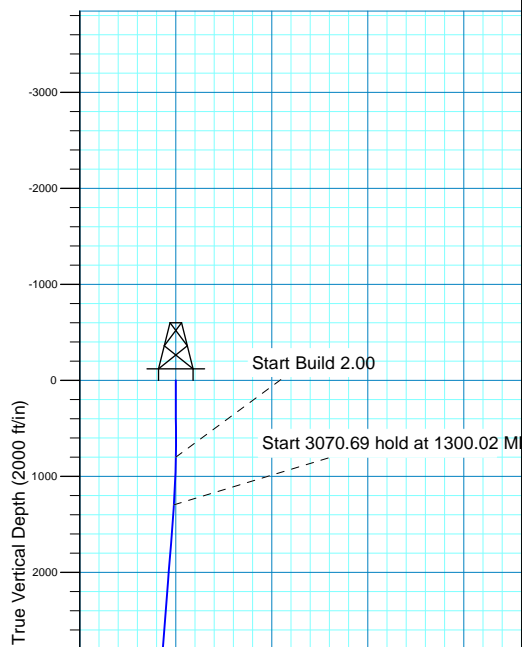
MD	Inc	Azi	TVD	+N/-S	+E/-W	Dleg	TFace	VSect
0.00	0.00	0.00	0.00	0.00	0.00	0.00	0.00	0.00
800.00	0.00	0.00	800.00	0.00	0.00	0.00	0.00	0.00
1300.02	10.00	151.05	1297.48	-38.09	21.07	2.00	151.05	-19.05
4370.71	10.00	151.05	4321.52	-504.69	279.18	0.00	0.00	-252.40
4870.72	0.00	0.00	4819.00	-542.78	300.25	2.00	180.00	-271.44
5813.26	0.00	0.00	5761.54	-542.78	300.25	0.00	0.00	-271.44
6561.27	89.76	270.17	6239.00	-541.33	-175.22	12.00	270.17	203.30
16161.38	89.76	270.17	6279.00	-512.08	-9775.20	0.00	0.00	9788.60

Plan: Plan #1 (Anschutz Equus Farms 03-62-04-4033C2/OH)

Created By: rscott Date: 18:33, February 15 2016

**WELL DETAILS: Anschutz Equus Farms 03-62-04-4033C2**

			GL 4613 @ 4613.00ft	4613.00		
+N/-S	+E/-W	Northing	Easting	Latitude	Longitude	
0.00	0.00	1337767.63	3329198.00	40° 15' 16.420 N	104° 19' 13.800 W	



03-62-04-4033C2 PBHL



**Bill Barrett Corporation**

## **Bill Barrett Corp.**

**Weld County, CO NAD 83**

**Anschutz Equus Farms 3-62-4\_5 CE2 Pad**

**Anschutz Equus Farms 03-62-04-4033C2**

**OH**

**Plan: Plan #1**

## **Standard Planning Report**

**15 February, 2016**



**Scientific Drilling**

[www.scientificdrilling.com](http://www.scientificdrilling.com)



<b>Database:</b>	Casper District	<b>Local Co-ordinate Reference:</b>	Well Anschutz Equus Farms 03-62-04-4033C2
<b>Company:</b>	Bill Barrett Corp.	<b>TVD Reference:</b>	GL 4613 @ 4613.00ft
<b>Project:</b>	Weld County, CO NAD 83	<b>MD Reference:</b>	GL 4613 @ 4613.00ft
<b>Site:</b>	Anschutz Equus Farms 3-62-4_5 CE2 Pad	<b>North Reference:</b>	True
<b>Well:</b>	Anschutz Equus Farms 03-62-04-4033C2	<b>Survey Calculation Method:</b>	Minimum Curvature
<b>Wellbore:</b>	OH		
<b>Design:</b>	Plan #1		

<b>Project</b>	Weld County, CO NAD 83		
<b>Map System:</b>	US State Plane 1983	<b>System Datum:</b>	Mean Sea Level
<b>Geo Datum:</b>	North American Datum 1983		
<b>Map Zone:</b>	Colorado Northern Zone		

<b>Site</b>	Anschutz Equus Farms 3-62-4_5 CE2 Pad, SECTION 4, T3N, R62W, 6TH P.M.			
<b>Site Position:</b>		<b>Northing:</b>	1,337,767.63 usft	<b>Latitude:</b> 40° 15' 16.420 N
<b>From:</b>	Lat/Long	<b>Easting:</b>	3,329,198.00 usft	<b>Longitude:</b> 104° 19' 13.800 W
<b>Position Uncertainty:</b>	0.00 ft	<b>Slot Radius:</b>	13.200 in	<b>Grid Convergence:</b> 0.76 °

<b>Well</b>	Anschutz Equus Farms 03-62-04-4033C2, 2490 FSL 325 FEL			
<b>Well Position</b>	<b>+N/-S</b>	0.00 ft	<b>Northing:</b>	1,337,767.63 usft
	<b>+E/-W</b>	0.00 ft	<b>Easting:</b>	3,329,198.00 usft
<b>Position Uncertainty</b>		0.00 ft	<b>Wellhead Elevation:</b>	0.00 ft
			<b>Ground Level:</b>	4,613.00 ft

<b>Wellbore</b>	OH				
<b>Magnetics</b>	<b>Model Name</b>	<b>Sample Date</b>	<b>Declination (°)</b>	<b>Dip Angle (°)</b>	<b>Field Strength (nT)</b>
	BGGM2015	2/10/2016	8.22	66.91	52,545

<b>Design</b>	Plan #1			
<b>Audit Notes:</b>				
<b>Version:</b>	<b>Phase:</b>	PLAN	<b>Tie On Depth:</b>	0.00
<b>Vertical Section:</b>	<b>Depth From (TVD) (ft)</b>	<b>+N/-S (ft)</b>	<b>+E/-W (ft)</b>	<b>Direction (°)</b>
	0.00	0.00	0.00	267.00

<b>Plan Sections</b>										
Measured Depth (ft)	Inclination (°)	Azimuth (°)	Vertical Depth (ft)	+N/-S (ft)	+E/-W (ft)	Dogleg Rate (°/100ft)	Build Rate (°/100ft)	Turn Rate (°/100ft)	TFO (°)	Target
0.00	0.00	0.00	0.00	0.00	0.00	0.00	0.00	0.00	0.00	
800.00	0.00	0.00	800.00	0.00	0.00	0.00	0.00	0.00	0.00	
1,300.02	10.00	151.05	1,297.48	-38.09	21.07	2.00	2.00	0.00	151.05	
4,370.71	10.00	151.05	4,321.52	-504.69	279.18	0.00	0.00	0.00	0.00	
4,870.72	0.00	0.00	4,819.00	-542.78	300.25	2.00	-2.00	0.00	180.00	
5,813.26	0.00	0.00	5,761.54	-542.78	300.25	0.00	0.00	0.00	0.00	
6,561.27	89.76	270.17	6,239.00	-541.33	-175.22	12.00	12.00	-12.01	270.17	
16,161.38	89.76	270.17	6,279.00	-512.08	-9,775.20	0.00	0.00	0.00	0.00	03-62-04-4033C2 PBI

<b>Database:</b>	Casper District	<b>Local Co-ordinate Reference:</b>	Well Anschutz Equus Farms 03-62-04-4033C2
<b>Company:</b>	Bill Barrett Corp.	<b>TVD Reference:</b>	GL 4613 @ 4613.00ft
<b>Project:</b>	Weld County, CO NAD 83	<b>MD Reference:</b>	GL 4613 @ 4613.00ft
<b>Site:</b>	Anschutz Equus Farms 3-62-4_5 CE2 Pad	<b>North Reference:</b>	True
<b>Well:</b>	Anschutz Equus Farms 03-62-04-4033C2	<b>Survey Calculation Method:</b>	Minimum Curvature
<b>Wellbore:</b>	OH		
<b>Design:</b>	Plan #1		

Planned Survey									
Measured Depth (ft)	Inclination (°)	Azimuth (°)	Vertical Depth (ft)	+N/-S (ft)	+E/-W (ft)	Vertical Section (ft)	Dogleg Rate (°/100ft)	Build Rate (°/100ft)	Turn Rate (°/100ft)
0.00	0.00	0.00	0.00	0.00	0.00	0.00	0.00	0.00	0.00
100.00	0.00	0.00	100.00	0.00	0.00	0.00	0.00	0.00	0.00
200.00	0.00	0.00	200.00	0.00	0.00	0.00	0.00	0.00	0.00
300.00	0.00	0.00	300.00	0.00	0.00	0.00	0.00	0.00	0.00
400.00	0.00	0.00	400.00	0.00	0.00	0.00	0.00	0.00	0.00
500.00	0.00	0.00	500.00	0.00	0.00	0.00	0.00	0.00	0.00
600.00	0.00	0.00	600.00	0.00	0.00	0.00	0.00	0.00	0.00
700.00	0.00	0.00	700.00	0.00	0.00	0.00	0.00	0.00	0.00
800.00	0.00	0.00	800.00	0.00	0.00	0.00	0.00	0.00	0.00
Start Build 2.00									
900.00	2.00	151.05	899.98	-1.53	0.84	-0.76	2.00	2.00	0.00
1,000.00	4.00	151.05	999.84	-6.11	3.38	-3.05	2.00	2.00	0.00
1,100.00	6.00	151.05	1,099.45	-13.73	7.60	-6.87	2.00	2.00	0.00
1,200.00	8.00	151.05	1,198.70	-24.40	13.50	-12.20	2.00	2.00	0.00
1,300.00	10.00	151.05	1,297.47	-38.08	21.07	-19.05	2.00	2.00	0.00
1,300.02	10.00	151.05	1,297.48	-38.09	21.07	-19.05	2.00	2.00	0.00
Start 3070.69 hold at 1300.02 MD									
1,400.00	10.00	151.05	1,395.95	-53.28	29.47	-26.65	0.00	0.00	0.00
1,500.00	10.00	151.05	1,494.43	-68.48	37.88	-34.24	0.00	0.00	0.00
1,600.00	10.00	151.05	1,592.91	-83.67	46.28	-41.84	0.00	0.00	0.00
1,700.00	10.00	151.05	1,691.39	-98.87	54.69	-49.44	0.00	0.00	0.00
1,800.00	10.00	151.05	1,789.87	-114.06	63.10	-57.04	0.00	0.00	0.00
1,900.00	10.00	151.05	1,888.35	-129.26	71.50	-64.64	0.00	0.00	0.00
2,000.00	10.00	151.05	1,986.83	-144.45	79.91	-72.24	0.00	0.00	0.00
2,100.00	10.00	151.05	2,085.31	-159.65	88.31	-79.84	0.00	0.00	0.00
2,200.00	10.00	151.05	2,183.79	-174.84	96.72	-87.44	0.00	0.00	0.00
2,300.00	10.00	151.05	2,282.27	-190.04	105.12	-95.04	0.00	0.00	0.00
2,400.00	10.00	151.05	2,380.75	-205.23	113.53	-102.64	0.00	0.00	0.00
2,500.00	10.00	151.05	2,479.23	-220.43	121.94	-110.24	0.00	0.00	0.00
2,600.00	10.00	151.05	2,577.71	-235.63	130.34	-117.84	0.00	0.00	0.00
2,700.00	10.00	151.05	2,676.19	-250.82	138.75	-125.44	0.00	0.00	0.00
2,800.00	10.00	151.05	2,774.68	-266.02	147.15	-133.03	0.00	0.00	0.00
2,900.00	10.00	151.05	2,873.16	-281.21	155.56	-140.63	0.00	0.00	0.00
3,000.00	10.00	151.05	2,971.64	-296.41	163.96	-148.23	0.00	0.00	0.00
3,100.00	10.00	151.05	3,070.12	-311.60	172.37	-155.83	0.00	0.00	0.00
3,200.00	10.00	151.05	3,168.60	-326.80	180.78	-163.43	0.00	0.00	0.00
3,300.00	10.00	151.05	3,267.08	-341.99	189.18	-171.03	0.00	0.00	0.00
3,400.00	10.00	151.05	3,365.56	-357.19	197.59	-178.63	0.00	0.00	0.00
3,500.00	10.00	151.05	3,464.04	-372.39	205.99	-186.23	0.00	0.00	0.00
3,600.00	10.00	151.05	3,562.52	-387.58	214.40	-193.83	0.00	0.00	0.00
3,700.00	10.00	151.05	3,661.00	-402.78	222.80	-201.43	0.00	0.00	0.00
3,800.00	10.00	151.05	3,759.48	-417.97	231.21	-209.03	0.00	0.00	0.00
3,900.00	10.00	151.05	3,857.96	-433.17	239.62	-216.63	0.00	0.00	0.00
4,000.00	10.00	151.05	3,956.44	-448.36	248.02	-224.23	0.00	0.00	0.00
4,100.00	10.00	151.05	4,054.92	-463.56	256.43	-231.83	0.00	0.00	0.00
4,200.00	10.00	151.05	4,153.40	-478.75	264.83	-239.42	0.00	0.00	0.00
4,300.00	10.00	151.05	4,251.89	-493.95	273.24	-247.02	0.00	0.00	0.00
4,370.71	10.00	151.05	4,321.52	-504.69	279.18	-252.40	0.00	0.00	0.00
Start Drop -2.00									
4,400.00	9.41	151.05	4,350.39	-509.02	281.57	-254.56	2.00	-2.00	0.00
4,500.00	7.41	151.05	4,449.31	-521.82	288.66	-260.96	2.00	-2.00	0.00
4,600.00	5.41	151.05	4,548.68	-531.60	294.06	-265.85	2.00	-2.00	0.00
4,700.00	3.41	151.05	4,648.38	-538.33	297.79	-269.22	2.00	-2.00	0.00

<b>Database:</b>	Casper District	<b>Local Co-ordinate Reference:</b>	Well Anschutz Equus Farms 03-62-04-4033C2
<b>Company:</b>	Bill Barrett Corp.	<b>TVD Reference:</b>	GL 4613 @ 4613.00ft
<b>Project:</b>	Weld County, CO NAD 83	<b>MD Reference:</b>	GL 4613 @ 4613.00ft
<b>Site:</b>	Anschutz Equus Farms 3-62-4_5 CE2 Pad	<b>North Reference:</b>	True
<b>Well:</b>	Anschutz Equus Farms 03-62-04-4033C2	<b>Survey Calculation Method:</b>	Minimum Curvature
<b>Wellbore:</b>	OH		
<b>Design:</b>	Plan #1		

Planned Survey									
Measured Depth (ft)	Inclination (°)	Azimuth (°)	Vertical Depth (ft)	+N/-S (ft)	+E/-W (ft)	Vertical Section (ft)	Dogleg Rate (°/100ft)	Build Rate (°/100ft)	Turn Rate (°/100ft)
4,800.00	1.41	151.05	4,748.28	-542.02	299.83	-271.06	2.00	-2.00	0.00
4,870.72	0.00	0.00	4,819.00	-542.78	300.25	-271.44	2.00	-2.00	0.00
<b>Start 942.54 hold at 4870.72 MD</b>									
4,900.00	0.00	0.00	4,848.28	-542.78	300.25	-271.44	0.00	0.00	0.00
5,000.00	0.00	0.00	4,948.28	-542.78	300.25	-271.44	0.00	0.00	0.00
5,100.00	0.00	0.00	5,048.28	-542.78	300.25	-271.44	0.00	0.00	0.00
5,200.00	0.00	0.00	5,148.28	-542.78	300.25	-271.44	0.00	0.00	0.00
5,300.00	0.00	0.00	5,248.28	-542.78	300.25	-271.44	0.00	0.00	0.00
5,400.00	0.00	0.00	5,348.28	-542.78	300.25	-271.44	0.00	0.00	0.00
5,500.00	0.00	0.00	5,448.28	-542.78	300.25	-271.44	0.00	0.00	0.00
5,600.00	0.00	0.00	5,548.28	-542.78	300.25	-271.44	0.00	0.00	0.00
5,700.00	0.00	0.00	5,648.28	-542.78	300.25	-271.44	0.00	0.00	0.00
5,800.00	0.00	0.00	5,748.28	-542.78	300.25	-271.44	0.00	0.00	0.00
5,813.26	0.00	0.00	5,761.54	-542.78	300.25	-271.44	0.00	0.00	0.00
<b>Start DLS 12.00 TFO 270.17</b>									
5,900.00	10.41	270.17	5,847.80	-542.76	292.39	-263.60	12.00	12.00	0.00
6,000.00	22.41	270.17	5,943.55	-542.67	264.20	-235.45	12.00	12.00	0.00
6,100.00	34.41	270.17	6,031.35	-542.53	216.71	-188.03	12.00	12.00	0.00
6,200.00	46.41	270.17	6,107.35	-542.33	152.00	-123.43	12.00	12.00	0.00
6,300.00	58.41	270.17	6,168.25	-542.09	72.91	-44.45	12.00	12.00	0.00
6,400.00	70.41	270.17	6,211.36	-541.81	-17.11	45.43	12.00	12.00	0.00
6,500.00	82.41	270.17	6,234.82	-541.52	-114.13	142.31	12.00	12.00	0.00
6,561.27	89.76	270.17	6,239.00	-541.33	-175.22	203.30	12.00	12.00	0.00
<b>Start 9600.10 hold at 6561.27 MD - 03-62-04-4033C2 LP</b>									
6,600.00	89.76	270.17	6,239.16	-541.21	-213.95	241.97	0.00	0.00	0.00
6,700.00	89.76	270.17	6,239.58	-540.91	-313.95	341.81	0.00	0.00	0.00
6,800.00	89.76	270.17	6,240.00	-540.60	-413.95	441.66	0.00	0.00	0.00
6,900.00	89.76	270.17	6,240.41	-540.30	-513.94	541.51	0.00	0.00	0.00
7,000.00	89.76	270.17	6,240.83	-539.99	-613.94	641.35	0.00	0.00	0.00
7,100.00	89.76	270.17	6,241.25	-539.69	-713.94	741.20	0.00	0.00	0.00
7,200.00	89.76	270.17	6,241.66	-539.38	-813.94	841.04	0.00	0.00	0.00
7,300.00	89.76	270.17	6,242.08	-539.08	-913.94	940.89	0.00	0.00	0.00
7,400.00	89.76	270.17	6,242.50	-538.78	-1,013.94	1,040.73	0.00	0.00	0.00
7,500.00	89.76	270.17	6,242.91	-538.47	-1,113.94	1,140.58	0.00	0.00	0.00
7,600.00	89.76	270.17	6,243.33	-538.17	-1,213.93	1,240.43	0.00	0.00	0.00
7,700.00	89.76	270.17	6,243.75	-537.86	-1,313.93	1,340.27	0.00	0.00	0.00
7,800.00	89.76	270.17	6,244.16	-537.56	-1,413.93	1,440.12	0.00	0.00	0.00
7,900.00	89.76	270.17	6,244.58	-537.25	-1,513.93	1,539.96	0.00	0.00	0.00
8,000.00	89.76	270.17	6,245.00	-536.95	-1,613.93	1,639.81	0.00	0.00	0.00
8,100.00	89.76	270.17	6,245.41	-536.64	-1,713.93	1,739.66	0.00	0.00	0.00
8,200.00	89.76	270.17	6,245.83	-536.34	-1,813.93	1,839.50	0.00	0.00	0.00
8,300.00	89.76	270.17	6,246.25	-536.03	-1,913.93	1,939.35	0.00	0.00	0.00
8,400.00	89.76	270.17	6,246.66	-535.73	-2,013.92	2,039.19	0.00	0.00	0.00
8,500.00	89.76	270.17	6,247.08	-535.42	-2,113.92	2,139.04	0.00	0.00	0.00
8,600.00	89.76	270.17	6,247.50	-535.12	-2,213.92	2,238.88	0.00	0.00	0.00
8,700.00	89.76	270.17	6,247.91	-534.81	-2,313.92	2,338.73	0.00	0.00	0.00
8,800.00	89.76	270.17	6,248.33	-534.51	-2,413.92	2,438.58	0.00	0.00	0.00
8,900.00	89.76	270.17	6,248.75	-534.20	-2,513.92	2,538.42	0.00	0.00	0.00
9,000.00	89.76	270.17	6,249.16	-533.90	-2,613.92	2,638.27	0.00	0.00	0.00
9,100.00	89.76	270.17	6,249.58	-533.60	-2,713.91	2,738.11	0.00	0.00	0.00
9,200.00	89.76	270.17	6,250.00	-533.29	-2,813.91	2,837.96	0.00	0.00	0.00
9,300.00	89.76	270.17	6,250.41	-532.99	-2,913.91	2,937.80	0.00	0.00	0.00

<b>Database:</b>	Casper District	<b>Local Co-ordinate Reference:</b>	Well Anschutz Equus Farms 03-62-04-4033C2
<b>Company:</b>	Bill Barrett Corp.	<b>TVD Reference:</b>	GL 4613 @ 4613.00ft
<b>Project:</b>	Weld County, CO NAD 83	<b>MD Reference:</b>	GL 4613 @ 4613.00ft
<b>Site:</b>	Anschutz Equus Farms 3-62-4_5 CE2 Pad	<b>North Reference:</b>	True
<b>Well:</b>	Anschutz Equus Farms 03-62-04-4033C2	<b>Survey Calculation Method:</b>	Minimum Curvature
<b>Wellbore:</b>	OH		
<b>Design:</b>	Plan #1		

Planned Survey									
Measured Depth (ft)	Inclination (°)	Azimuth (°)	Vertical Depth (ft)	+N/-S (ft)	+E/-W (ft)	Vertical Section (ft)	Dogleg Rate (°/100ft)	Build Rate (°/100ft)	Turn Rate (°/100ft)
9,400.00	89.76	270.17	6,250.83	-532.68	-3,013.91	3,037.65	0.00	0.00	0.00
9,500.00	89.76	270.17	6,251.25	-532.38	-3,113.91	3,137.50	0.00	0.00	0.00
9,600.00	89.76	270.17	6,251.66	-532.07	-3,213.91	3,237.34	0.00	0.00	0.00
9,700.00	89.76	270.17	6,252.08	-531.77	-3,313.91	3,337.19	0.00	0.00	0.00
9,800.00	89.76	270.17	6,252.50	-531.46	-3,413.91	3,437.03	0.00	0.00	0.00
9,900.00	89.76	270.17	6,252.91	-531.16	-3,513.90	3,536.88	0.00	0.00	0.00
10,000.00	89.76	270.17	6,253.33	-530.85	-3,613.90	3,636.73	0.00	0.00	0.00
10,100.00	89.76	270.17	6,253.75	-530.55	-3,713.90	3,736.57	0.00	0.00	0.00
10,200.00	89.76	270.17	6,254.16	-530.24	-3,813.90	3,836.42	0.00	0.00	0.00
10,300.00	89.76	270.17	6,254.58	-529.94	-3,913.90	3,936.26	0.00	0.00	0.00
10,400.00	89.76	270.17	6,255.00	-529.63	-4,013.90	4,036.11	0.00	0.00	0.00
10,500.00	89.76	270.17	6,255.41	-529.33	-4,113.90	4,135.95	0.00	0.00	0.00
10,600.00	89.76	270.17	6,255.83	-529.02	-4,213.89	4,235.80	0.00	0.00	0.00
10,700.00	89.76	270.17	6,256.25	-528.72	-4,313.89	4,335.65	0.00	0.00	0.00
10,800.00	89.76	270.17	6,256.66	-528.42	-4,413.89	4,435.49	0.00	0.00	0.00
10,900.00	89.76	270.17	6,257.08	-528.11	-4,513.89	4,535.34	0.00	0.00	0.00
11,000.00	89.76	270.17	6,257.49	-527.81	-4,613.89	4,635.18	0.00	0.00	0.00
11,100.00	89.76	270.17	6,257.91	-527.50	-4,713.89	4,735.03	0.00	0.00	0.00
11,200.00	89.76	270.17	6,258.33	-527.20	-4,813.89	4,834.87	0.00	0.00	0.00
11,300.00	89.76	270.17	6,258.74	-526.89	-4,913.89	4,934.72	0.00	0.00	0.00
11,400.00	89.76	270.17	6,259.16	-526.59	-5,013.88	5,034.57	0.00	0.00	0.00
11,500.00	89.76	270.17	6,259.58	-526.28	-5,113.88	5,134.41	0.00	0.00	0.00
11,600.00	89.76	270.17	6,259.99	-525.98	-5,213.88	5,234.26	0.00	0.00	0.00
11,700.00	89.76	270.17	6,260.41	-525.67	-5,313.88	5,334.10	0.00	0.00	0.00
11,800.00	89.76	270.17	6,260.83	-525.37	-5,413.88	5,433.95	0.00	0.00	0.00
11,900.00	89.76	270.17	6,261.24	-525.06	-5,513.88	5,533.80	0.00	0.00	0.00
12,000.00	89.76	270.17	6,261.66	-524.76	-5,613.88	5,633.64	0.00	0.00	0.00
12,100.00	89.76	270.17	6,262.08	-524.45	-5,713.88	5,733.49	0.00	0.00	0.00
12,200.00	89.76	270.17	6,262.49	-524.15	-5,813.87	5,833.33	0.00	0.00	0.00
12,300.00	89.76	270.17	6,262.91	-523.84	-5,913.87	5,933.18	0.00	0.00	0.00
12,400.00	89.76	270.17	6,263.33	-523.54	-6,013.87	6,033.02	0.00	0.00	0.00
12,500.00	89.76	270.17	6,263.74	-523.24	-6,113.87	6,132.87	0.00	0.00	0.00
12,600.00	89.76	270.17	6,264.16	-522.93	-6,213.87	6,232.72	0.00	0.00	0.00
12,700.00	89.76	270.17	6,264.58	-522.63	-6,313.87	6,332.56	0.00	0.00	0.00
12,800.00	89.76	270.17	6,264.99	-522.32	-6,413.87	6,432.41	0.00	0.00	0.00
12,900.00	89.76	270.17	6,265.41	-522.02	-6,513.86	6,532.25	0.00	0.00	0.00
13,000.00	89.76	270.17	6,265.83	-521.71	-6,613.86	6,632.10	0.00	0.00	0.00
13,100.00	89.76	270.17	6,266.24	-521.41	-6,713.86	6,731.95	0.00	0.00	0.00
13,200.00	89.76	270.17	6,266.66	-521.10	-6,813.86	6,831.79	0.00	0.00	0.00
13,300.00	89.76	270.17	6,267.08	-520.80	-6,913.86	6,931.64	0.00	0.00	0.00
13,400.00	89.76	270.17	6,267.49	-520.49	-7,013.86	7,031.48	0.00	0.00	0.00
13,500.00	89.76	270.17	6,267.91	-520.19	-7,113.86	7,131.33	0.00	0.00	0.00
13,600.00	89.76	270.17	6,268.33	-519.88	-7,213.86	7,231.17	0.00	0.00	0.00
13,700.00	89.76	270.17	6,268.74	-519.58	-7,313.85	7,331.02	0.00	0.00	0.00
13,800.00	89.76	270.17	6,269.16	-519.27	-7,413.85	7,430.87	0.00	0.00	0.00
13,900.00	89.76	270.17	6,269.58	-518.97	-7,513.85	7,530.71	0.00	0.00	0.00
14,000.00	89.76	270.17	6,269.99	-518.66	-7,613.85	7,630.56	0.00	0.00	0.00
14,100.00	89.76	270.17	6,270.41	-518.36	-7,713.85	7,730.40	0.00	0.00	0.00
14,200.00	89.76	270.17	6,270.83	-518.06	-7,813.85	7,830.25	0.00	0.00	0.00
14,300.00	89.76	270.17	6,271.24	-517.75	-7,913.85	7,930.09	0.00	0.00	0.00
14,400.00	89.76	270.17	6,271.66	-517.45	-8,013.84	8,029.94	0.00	0.00	0.00
14,500.00	89.76	270.17	6,272.08	-517.14	-8,113.84	8,129.79	0.00	0.00	0.00
14,600.00	89.76	270.17	6,272.49	-516.84	-8,213.84	8,229.63	0.00	0.00	0.00

<b>Database:</b>	Casper District	<b>Local Co-ordinate Reference:</b>	Well Anschutz Equus Farms 03-62-04-4033C2
<b>Company:</b>	Bill Barrett Corp.	<b>TVD Reference:</b>	GL 4613 @ 4613.00ft
<b>Project:</b>	Weld County, CO NAD 83	<b>MD Reference:</b>	GL 4613 @ 4613.00ft
<b>Site:</b>	Anschutz Equus Farms 3-62-4_5 CE2 Pad	<b>North Reference:</b>	True
<b>Well:</b>	Anschutz Equus Farms 03-62-04-4033C2	<b>Survey Calculation Method:</b>	Minimum Curvature
<b>Wellbore:</b>	OH		
<b>Design:</b>	Plan #1		

Planned Survey										
Measured Depth (ft)	Inclination (°)	Azimuth (°)	Vertical Depth (ft)	+N/-S (ft)	+E/-W (ft)	Vertical Section (ft)	Dogleg Rate (°/100ft)	Build Rate (°/100ft)	Turn Rate (°/100ft)	
14,700.00	89.76	270.17	6,272.91	-516.53	-8,313.84	8,329.48	0.00	0.00	0.00	
14,800.00	89.76	270.17	6,273.33	-516.23	-8,413.84	8,429.32	0.00	0.00	0.00	
14,900.00	89.76	270.17	6,273.74	-515.92	-8,513.84	8,529.17	0.00	0.00	0.00	
15,000.00	89.76	270.17	6,274.16	-515.62	-8,613.84	8,629.02	0.00	0.00	0.00	
15,100.00	89.76	270.17	6,274.58	-515.31	-8,713.84	8,728.86	0.00	0.00	0.00	
15,200.00	89.76	270.17	6,274.99	-515.01	-8,813.83	8,828.71	0.00	0.00	0.00	
15,300.00	89.76	270.17	6,275.41	-514.70	-8,913.83	8,928.55	0.00	0.00	0.00	
15,400.00	89.76	270.17	6,275.83	-514.40	-9,013.83	9,028.40	0.00	0.00	0.00	
15,500.00	89.76	270.17	6,276.24	-514.09	-9,113.83	9,128.24	0.00	0.00	0.00	
15,600.00	89.76	270.17	6,276.66	-513.79	-9,213.83	9,228.09	0.00	0.00	0.00	
15,700.00	89.76	270.17	6,277.08	-513.48	-9,313.83	9,327.94	0.00	0.00	0.00	
15,800.00	89.76	270.17	6,277.49	-513.18	-9,413.83	9,427.78	0.00	0.00	0.00	
15,900.00	89.76	270.17	6,277.91	-512.88	-9,513.82	9,527.63	0.00	0.00	0.00	
16,000.00	89.76	270.17	6,278.33	-512.57	-9,613.82	9,627.47	0.00	0.00	0.00	
16,100.00	89.76	270.17	6,278.74	-512.27	-9,713.82	9,727.32	0.00	0.00	0.00	
16,161.38	89.76	270.17	6,279.00	-512.08	-9,775.20	9,788.60	0.00	0.00	0.00	
TD at 16161.38 - 03-62-04-4033C2 PBHL										

Design Targets										
Target Name	Dip Angle (°)	Dip Dir. (°)	TVD (ft)	+N/-S (ft)	+E/-W (ft)	Northing (usft)	Easting (usft)	Latitude	Longitude	
03-62-04-4033C2 LP - hit/miss target - Shape - Point	0.00	0.00	6,239.00	-541.33	-175.22	1,337,224.02	3,329,029.99	40° 15' 11.070 N	104° 19' 16.060 W	
03-62-04-4033C2 PBHL - plan hits target center - Point	0.00	0.00	6,279.00	-512.08	-9,775.20	1,337,125.58	3,319,430.50	40° 15' 11.340 N	104° 21' 19.880 W	

Plan Annotations					
Measured Depth (ft)	Vertical Depth (ft)	Local Coordinates			
		+N/-S (ft)	+E/-W (ft)	Comment	
800.00	800.00	0.00	0.00	Start Build 2.00	
1,300.02	1,297.48	-38.09	21.07	Start 3070.69 hold at 1300.02 MD	
4,370.71	4,321.52	-504.69	279.18	Start Drop -2.00	
4,870.72	4,819.00	-542.78	300.25	Start 942.54 hold at 4870.72 MD	
5,813.26	5,761.54	-542.78	300.25	Start DLS 12.00 TFO 270.17	
6,561.27	6,239.00	-541.33	-175.22	Start 9600.10 hold at 6561.27 MD	
16,161.38	6,279.00	-512.08	-9,775.20	TD at 16161.38	