

**PROJECT DETAILS: Weld County, CO NAD 83**

Geodetic System: US State Plane 1983  
 Datum: North American Datum 1983  
 Ellipsoid: GRS 1980  
 Zone: Colorado Northern Zone  
 System Datum: Mean Sea Level  
 Local North: True

Project: Weld County, CO NAD 83  
 Site: Anschutz Equus Farms 3-62-4.5 CE2 Pad  
 Well: Anschutz Equus Farms 03-62-04-2532D2  
 Wellbore: OH  
 Design: Plan #1



Azimuths to True North  
 Magnetic North: 8.22°

Magnetic Field  
 Strength: 52545.4snT  
 Dip Angle: 66.91°  
 Date: 2/10/2016  
 Model: BGGM2015

**SECTION DETAILS**

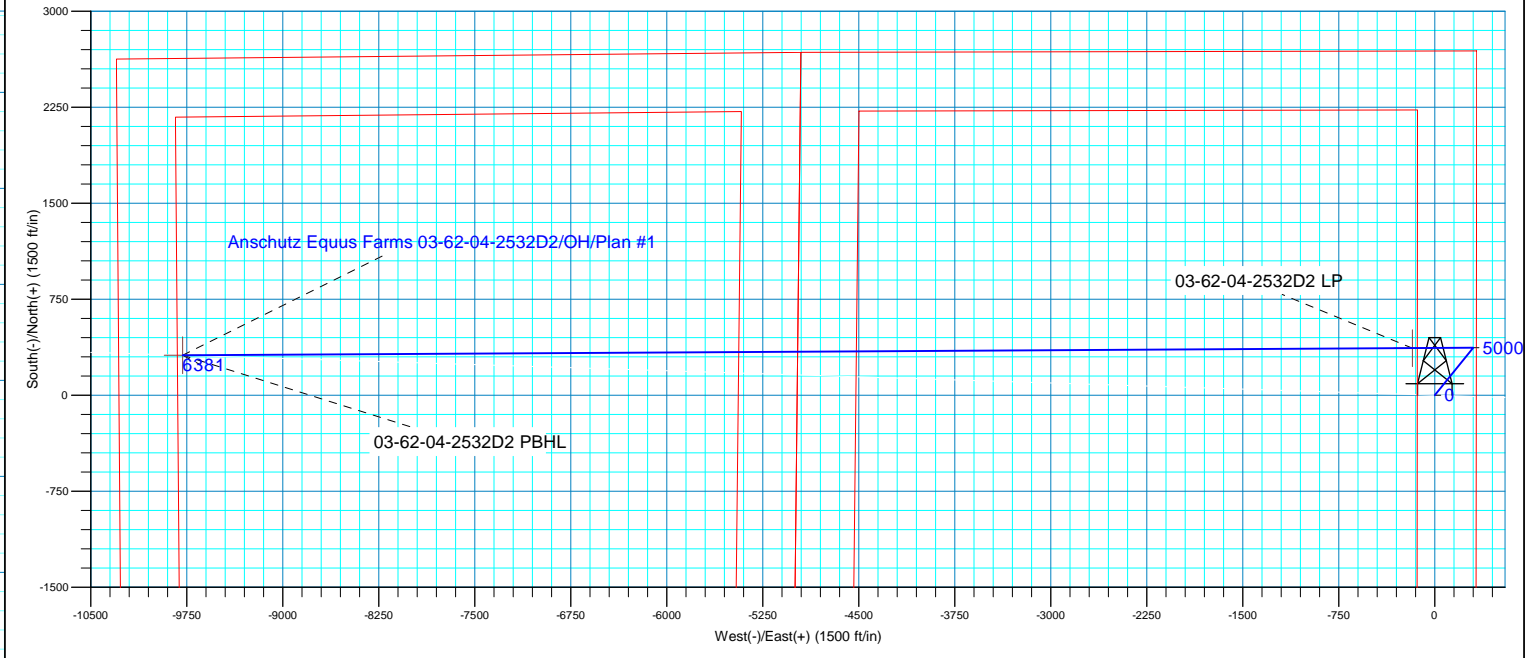
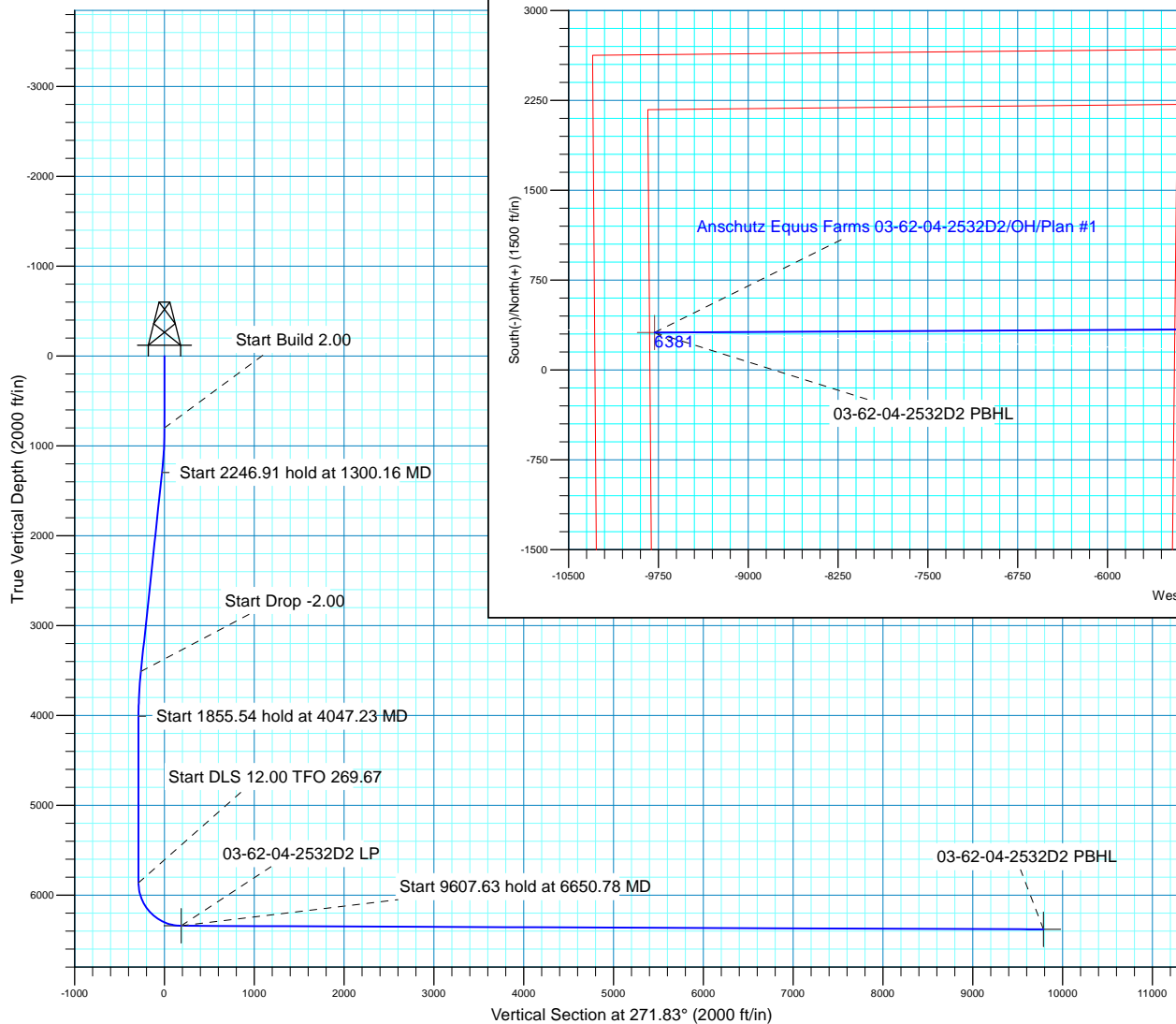
Plan: Plan #1 (Anschutz Equus Farms 03-62-04-2532D2/OH)

Created By: rscott Date: 18:23, February 15 2016

**WELL DETAILS: Anschutz Equus Farms 03-62-04-2532D2**

GL 4613 @ 4613.00ft (Original Well Elev) 4613.00  
 Northing Easting Latitude Longitude  
 0.00 0.00 1337813.15 3329198.17 40° 15' 16.869 N 104° 19' 13.790 W

MD	Inc	Azi	TVD	+N/-S	+E/-W	Dleg	TFace	VSect
0.00	0.00	0.00	0.00	0.00	0.00	0.00	0.00	0.00
800.00	0.00	0.00	800.00	0.00	0.00	0.00	0.00	0.00
1300.16	10.00	38.97	1297.63	33.86	27.39	2.00	38.97	-26.29
3547.07	10.00	38.97	3510.37	337.30	272.86	0.00	0.00	-261.94
4047.23	0.00	0.00	4008.00	371.16	300.25	2.00	180.00	-288.24
5902.77	0.00	0.00	5863.54	371.16	300.25	0.00	0.00	-288.24
6650.78	89.76	269.67	6341.00	368.40	-175.22	12.00	269.67	186.90
16258.42	89.76	269.67	6381.00	312.69	-9782.61	0.00	0.00	9787.60





## **Bill Barrett Corp.**

**Weld County, CO NAD 83**

**Anschutz Equus Farms 3-62-4\_5 CE2 Pad**

**Anschutz Equus Farms 03-62-04-2532D2**

**OH**

**Plan: Plan #1**

## **Standard Planning Report**

**15 February, 2016**



<b>Database:</b>	Casper District	<b>Local Co-ordinate Reference:</b>	Well Anschutz Equus Farms 03-62-04-2532D2
<b>Company:</b>	Bill Barrett Corp.	<b>TVD Reference:</b>	GL 4613 @ 4613.00ft (Original Well Elev)
<b>Project:</b>	Weld County, CO NAD 83	<b>MD Reference:</b>	GL 4613 @ 4613.00ft (Original Well Elev)
<b>Site:</b>	Anschutz Equus Farms 3-62-4_5 CE2 Pad	<b>North Reference:</b>	True
<b>Well:</b>	Anschutz Equus Farms 03-62-04-2532D2	<b>Survey Calculation Method:</b>	Minimum Curvature
<b>Wellbore:</b>	OH		
<b>Design:</b>	Plan #1		

<b>Project</b>	Weld County, CO NAD 83		
<b>Map System:</b>	US State Plane 1983	<b>System Datum:</b>	Mean Sea Level
<b>Geo Datum:</b>	North American Datum 1983		
<b>Map Zone:</b>	Colorado Northern Zone		

<b>Site</b>	Anschutz Equus Farms 3-62-4_5 CE2 Pad, SECTION 4, T3N, R62W, 6TH P.M.			
<b>Site Position:</b>		<b>Northing:</b>	1,337,767.63 usft	<b>Latitude:</b> 40° 15' 16.420 N
<b>From:</b>	Lat/Long	<b>Easting:</b>	3,329,198.00 usft	<b>Longitude:</b> 104° 19' 13.800 W
<b>Position Uncertainty:</b>	0.00 ft	<b>Slot Radius:</b>	13.200 in	<b>Grid Convergence:</b> 0.76 °

<b>Well</b>	Anschutz Equus Farms 03-62-04-2532D2, 2535 FSL 325 FEL			
<b>Well Position</b>	<b>+N/-S</b>	45.52 ft	<b>Northing:</b>	1,337,813.15 usft
	<b>+E/-W</b>	0.78 ft	<b>Easting:</b>	3,329,198.17 usft
<b>Position Uncertainty</b>		0.00 ft	<b>Wellhead Elevation:</b>	0.00 ft
			<b>Ground Level:</b>	4,613.00 ft

<b>Wellbore</b>	OH				
<b>Magnetics</b>	<b>Model Name</b>	<b>Sample Date</b>	<b>Declination (°)</b>	<b>Dip Angle (°)</b>	<b>Field Strength (nT)</b>
	BGGM2015	2/10/2016	8.22	66.91	52,545

<b>Design</b>	Plan #1			
<b>Audit Notes:</b>				
<b>Version:</b>	<b>Phase:</b>	PLAN	<b>Tie On Depth:</b>	0.00
<b>Vertical Section:</b>	<b>Depth From (TVD) (ft)</b>	<b>+N/-S (ft)</b>	<b>+E/-W (ft)</b>	<b>Direction (°)</b>
	0.00	0.00	0.00	271.83

<b>Plan Sections</b>										
Measured Depth (ft)	Inclination (°)	Azimuth (°)	Vertical Depth (ft)	+N/-S (ft)	+E/-W (ft)	Dogleg Rate (°/100ft)	Build Rate (°/100ft)	Turn Rate (°/100ft)	TFO (°)	Target
0.00	0.00	0.00	0.00	0.00	0.00	0.00	0.00	0.00	0.00	
800.00	0.00	0.00	800.00	0.00	0.00	0.00	0.00	0.00	0.00	
1,300.16	10.00	38.97	1,297.63	33.86	27.39	2.00	2.00	0.00	38.97	
3,547.07	10.00	38.97	3,510.37	337.30	272.86	0.00	0.00	0.00	0.00	
4,047.23	0.00	0.00	4,008.00	371.16	300.25	2.00	-2.00	0.00	180.00	
5,902.77	0.00	0.00	5,863.54	371.16	300.25	0.00	0.00	0.00	0.00	
6,650.78	89.76	269.67	6,341.00	368.40	-175.22	12.00	12.00	-12.08	269.67	
16,258.42	89.76	269.67	6,381.00	312.69	-9,782.61	0.00	0.00	0.00	0.00	03-62-04-2532D2 PBI

<b>Database:</b>	Casper District	<b>Local Co-ordinate Reference:</b>	Well Anschutz Equus Farms 03-62-04-2532D2
<b>Company:</b>	Bill Barrett Corp.	<b>TVD Reference:</b>	GL 4613 @ 4613.00ft (Original Well Elev)
<b>Project:</b>	Weld County, CO NAD 83	<b>MD Reference:</b>	GL 4613 @ 4613.00ft (Original Well Elev)
<b>Site:</b>	Anschutz Equus Farms 3-62-4_5 CE2 Pad	<b>North Reference:</b>	True
<b>Well:</b>	Anschutz Equus Farms 03-62-04-2532D2	<b>Survey Calculation Method:</b>	Minimum Curvature
<b>Wellbore:</b>	OH		
<b>Design:</b>	Plan #1		

Planned Survey									
Measured Depth (ft)	Inclination (°)	Azimuth (°)	Vertical Depth (ft)	+N/-S (ft)	+E/-W (ft)	Vertical Section (ft)	Dogleg Rate (°/100ft)	Build Rate (°/100ft)	Turn Rate (°/100ft)
0.00	0.00	0.00	0.00	0.00	0.00	0.00	0.00	0.00	0.00
100.00	0.00	0.00	100.00	0.00	0.00	0.00	0.00	0.00	0.00
200.00	0.00	0.00	200.00	0.00	0.00	0.00	0.00	0.00	0.00
300.00	0.00	0.00	300.00	0.00	0.00	0.00	0.00	0.00	0.00
400.00	0.00	0.00	400.00	0.00	0.00	0.00	0.00	0.00	0.00
500.00	0.00	0.00	500.00	0.00	0.00	0.00	0.00	0.00	0.00
600.00	0.00	0.00	600.00	0.00	0.00	0.00	0.00	0.00	0.00
700.00	0.00	0.00	700.00	0.00	0.00	0.00	0.00	0.00	0.00
800.00	0.00	0.00	800.00	0.00	0.00	0.00	0.00	0.00	0.00
Start Build 2.00									
900.00	2.00	38.97	899.98	1.36	1.10	-1.05	2.00	2.00	0.00
1,000.00	4.00	38.97	999.84	5.43	4.39	-4.21	2.00	2.00	0.00
1,100.00	6.00	38.97	1,099.45	12.20	9.87	-9.48	2.00	2.00	0.00
1,200.00	8.00	38.97	1,198.70	21.68	17.53	-16.83	2.00	2.00	0.00
1,300.00	10.00	38.97	1,297.47	33.84	27.37	-26.28	2.00	2.00	0.00
1,300.16	10.00	38.97	1,297.63	33.86	27.39	-26.29	2.00	2.00	0.00
Start 2246.91 hold at 1300.16 MD									
1,400.00	10.00	38.97	1,395.95	47.34	38.30	-36.77	0.00	0.00	0.00
1,500.00	10.00	38.97	1,494.42	60.85	49.22	-47.25	0.00	0.00	0.00
1,600.00	10.00	38.97	1,592.90	74.35	60.15	-57.74	0.00	0.00	0.00
1,700.00	10.00	38.97	1,691.38	87.86	71.07	-68.23	0.00	0.00	0.00
1,800.00	10.00	38.97	1,789.86	101.36	82.00	-78.72	0.00	0.00	0.00
1,900.00	10.00	38.97	1,888.34	114.87	92.92	-89.20	0.00	0.00	0.00
2,000.00	10.00	38.97	1,986.82	128.37	103.85	-99.69	0.00	0.00	0.00
2,100.00	10.00	38.97	2,085.30	141.88	114.77	-110.18	0.00	0.00	0.00
2,200.00	10.00	38.97	2,183.78	155.38	125.70	-120.67	0.00	0.00	0.00
2,300.00	10.00	38.97	2,282.26	168.89	136.62	-131.16	0.00	0.00	0.00
2,400.00	10.00	38.97	2,380.74	182.39	147.55	-141.64	0.00	0.00	0.00
2,500.00	10.00	38.97	2,479.22	195.90	158.47	-152.13	0.00	0.00	0.00
2,600.00	10.00	38.97	2,577.70	209.40	169.39	-162.62	0.00	0.00	0.00
2,700.00	10.00	38.97	2,676.18	222.91	180.32	-173.11	0.00	0.00	0.00
2,800.00	10.00	38.97	2,774.66	236.41	191.24	-183.59	0.00	0.00	0.00
2,900.00	10.00	38.97	2,873.14	249.92	202.17	-194.08	0.00	0.00	0.00
3,000.00	10.00	38.97	2,971.62	263.42	213.09	-204.57	0.00	0.00	0.00
3,100.00	10.00	38.97	3,070.10	276.92	224.02	-215.06	0.00	0.00	0.00
3,200.00	10.00	38.97	3,168.58	290.43	234.94	-225.54	0.00	0.00	0.00
3,300.00	10.00	38.97	3,267.06	303.93	245.87	-236.03	0.00	0.00	0.00
3,400.00	10.00	38.97	3,365.54	317.44	256.79	-246.52	0.00	0.00	0.00
3,500.00	10.00	38.97	3,464.02	330.94	267.72	-257.01	0.00	0.00	0.00
3,547.07	10.00	38.97	3,510.37	337.30	272.86	-261.94	0.00	0.00	0.00
Start Drop -2.00									
3,600.00	8.94	38.97	3,562.58	344.07	278.34	-267.20	2.00	-2.00	0.00
3,700.00	6.94	38.97	3,661.62	354.82	287.03	-275.55	2.00	-2.00	0.00
3,800.00	4.94	38.97	3,761.07	362.87	293.54	-281.80	2.00	-2.00	0.00
3,900.00	2.94	38.97	3,860.83	368.22	297.87	-285.96	2.00	-2.00	0.00
4,000.00	0.94	38.97	3,960.77	370.86	300.01	-288.00	2.00	-2.00	0.00
4,047.23	0.00	0.00	4,008.00	371.16	300.25	-288.24	2.00	-2.00	0.00
Start 1855.54 hold at 4047.23 MD									
4,100.00	0.00	0.00	4,060.77	371.16	300.25	-288.24	0.00	0.00	0.00
4,200.00	0.00	0.00	4,160.77	371.16	300.25	-288.24	0.00	0.00	0.00
4,300.00	0.00	0.00	4,260.77	371.16	300.25	-288.24	0.00	0.00	0.00
4,400.00	0.00	0.00	4,360.77	371.16	300.25	-288.24	0.00	0.00	0.00
4,500.00	0.00	0.00	4,460.77	371.16	300.25	-288.24	0.00	0.00	0.00

<b>Database:</b>	Casper District	<b>Local Co-ordinate Reference:</b>	Well Anschutz Equus Farms 03-62-04-2532D2
<b>Company:</b>	Bill Barrett Corp.	<b>TVD Reference:</b>	GL 4613 @ 4613.00ft (Original Well Elev)
<b>Project:</b>	Weld County, CO NAD 83	<b>MD Reference:</b>	GL 4613 @ 4613.00ft (Original Well Elev)
<b>Site:</b>	Anschutz Equus Farms 3-62-4_5 CE2 Pad	<b>North Reference:</b>	True
<b>Well:</b>	Anschutz Equus Farms 03-62-04-2532D2	<b>Survey Calculation Method:</b>	Minimum Curvature
<b>Wellbore:</b>	OH		
<b>Design:</b>	Plan #1		

Planned Survey									
Measured Depth (ft)	Inclination (°)	Azimuth (°)	Vertical Depth (ft)	+N/-S (ft)	+E/-W (ft)	Vertical Section (ft)	Dogleg Rate (°/100ft)	Build Rate (°/100ft)	Turn Rate (°/100ft)
4,600.00	0.00	0.00	4,560.77	371.16	300.25	-288.24	0.00	0.00	0.00
4,700.00	0.00	0.00	4,660.77	371.16	300.25	-288.24	0.00	0.00	0.00
4,800.00	0.00	0.00	4,760.77	371.16	300.25	-288.24	0.00	0.00	0.00
4,900.00	0.00	0.00	4,860.77	371.16	300.25	-288.24	0.00	0.00	0.00
5,000.00	0.00	0.00	4,960.77	371.16	300.25	-288.24	0.00	0.00	0.00
5,100.00	0.00	0.00	5,060.77	371.16	300.25	-288.24	0.00	0.00	0.00
5,200.00	0.00	0.00	5,160.77	371.16	300.25	-288.24	0.00	0.00	0.00
5,300.00	0.00	0.00	5,260.77	371.16	300.25	-288.24	0.00	0.00	0.00
5,400.00	0.00	0.00	5,360.77	371.16	300.25	-288.24	0.00	0.00	0.00
5,500.00	0.00	0.00	5,460.77	371.16	300.25	-288.24	0.00	0.00	0.00
5,600.00	0.00	0.00	5,560.77	371.16	300.25	-288.24	0.00	0.00	0.00
5,700.00	0.00	0.00	5,660.77	371.16	300.25	-288.24	0.00	0.00	0.00
5,800.00	0.00	0.00	5,760.77	371.16	300.25	-288.24	0.00	0.00	0.00
5,900.00	0.00	0.00	5,860.77	371.16	300.25	-288.24	0.00	0.00	0.00
5,902.77	0.00	0.00	5,863.54	371.16	300.25	-288.24	0.00	0.00	0.00
<b>Start DLS 12.00 TFO 269.67</b>									
6,000.00	11.67	269.67	5,960.10	371.10	290.38	-278.38	12.00	12.00	0.00
6,100.00	23.67	269.67	6,055.21	370.93	260.09	-248.11	12.00	12.00	0.00
6,200.00	35.67	269.67	6,141.94	370.64	210.69	-198.74	12.00	12.00	0.00
6,300.00	47.67	269.67	6,216.50	370.26	144.33	-132.43	12.00	12.00	0.00
6,400.00	59.67	269.67	6,275.64	369.79	63.92	-52.07	12.00	12.00	0.00
6,500.00	71.67	269.67	6,316.77	369.26	-27.03	38.81	12.00	12.00	0.00
6,600.00	83.67	269.67	6,338.09	368.70	-124.54	136.26	12.00	12.00	0.00
6,650.78	89.76	269.67	6,341.00	368.40	-175.22	186.90	12.00	12.00	0.00
<b>Start 9607.63 hold at 6650.78 MD - 03-62-04-2532D2 LP</b>									
6,700.00	89.76	269.67	6,341.21	368.12	-224.43	236.08	0.00	0.00	0.00
6,800.00	89.76	269.67	6,341.62	367.54	-324.43	336.01	0.00	0.00	0.00
6,900.00	89.76	269.67	6,342.04	366.96	-424.43	435.94	0.00	0.00	0.00
7,000.00	89.76	269.67	6,342.45	366.38	-524.43	535.86	0.00	0.00	0.00
7,100.00	89.76	269.67	6,342.87	365.80	-624.42	635.79	0.00	0.00	0.00
7,200.00	89.76	269.67	6,343.29	365.22	-724.42	735.72	0.00	0.00	0.00
7,300.00	89.76	269.67	6,343.70	364.64	-824.42	835.65	0.00	0.00	0.00
7,400.00	89.76	269.67	6,344.12	364.06	-924.42	935.57	0.00	0.00	0.00
7,500.00	89.76	269.67	6,344.54	363.48	-1,024.41	1,035.50	0.00	0.00	0.00
7,600.00	89.76	269.67	6,344.95	362.90	-1,124.41	1,135.43	0.00	0.00	0.00
7,700.00	89.76	269.67	6,345.37	362.32	-1,224.41	1,235.36	0.00	0.00	0.00
7,800.00	89.76	269.67	6,345.79	361.74	-1,324.41	1,335.29	0.00	0.00	0.00
7,900.00	89.76	269.67	6,346.20	361.16	-1,424.40	1,435.21	0.00	0.00	0.00
8,000.00	89.76	269.67	6,346.62	360.58	-1,524.40	1,535.14	0.00	0.00	0.00
8,100.00	89.76	269.67	6,347.03	360.00	-1,624.40	1,635.07	0.00	0.00	0.00
8,200.00	89.76	269.67	6,347.45	359.42	-1,724.40	1,735.00	0.00	0.00	0.00
8,300.00	89.76	269.67	6,347.87	358.84	-1,824.39	1,834.93	0.00	0.00	0.00
8,400.00	89.76	269.67	6,348.28	358.26	-1,924.39	1,934.85	0.00	0.00	0.00
8,500.00	89.76	269.67	6,348.70	357.68	-2,024.39	2,034.78	0.00	0.00	0.00
8,600.00	89.76	269.67	6,349.12	357.10	-2,124.39	2,134.71	0.00	0.00	0.00
8,700.00	89.76	269.67	6,349.53	356.52	-2,224.38	2,234.64	0.00	0.00	0.00
8,800.00	89.76	269.67	6,349.95	355.94	-2,324.38	2,334.56	0.00	0.00	0.00
8,900.00	89.76	269.67	6,350.36	355.36	-2,424.38	2,434.49	0.00	0.00	0.00
9,000.00	89.76	269.67	6,350.78	354.78	-2,524.37	2,534.42	0.00	0.00	0.00
9,100.00	89.76	269.67	6,351.20	354.20	-2,624.37	2,634.35	0.00	0.00	0.00
9,200.00	89.76	269.67	6,351.61	353.62	-2,724.37	2,734.28	0.00	0.00	0.00
9,300.00	89.76	269.67	6,352.03	353.04	-2,824.37	2,834.20	0.00	0.00	0.00
9,400.00	89.76	269.67	6,352.45	352.46	-2,924.36	2,934.13	0.00	0.00	0.00

<b>Database:</b>	Casper District	<b>Local Co-ordinate Reference:</b>	Well Anschutz Equus Farms 03-62-04-2532D2
<b>Company:</b>	Bill Barrett Corp.	<b>TVD Reference:</b>	GL 4613 @ 4613.00ft (Original Well Elev)
<b>Project:</b>	Weld County, CO NAD 83	<b>MD Reference:</b>	GL 4613 @ 4613.00ft (Original Well Elev)
<b>Site:</b>	Anschutz Equus Farms 3-62-4_5 CE2 Pad	<b>North Reference:</b>	True
<b>Well:</b>	Anschutz Equus Farms 03-62-04-2532D2	<b>Survey Calculation Method:</b>	Minimum Curvature
<b>Wellbore:</b>	OH		
<b>Design:</b>	Plan #1		

Planned Survey									
Measured Depth (ft)	Inclination (°)	Azimuth (°)	Vertical Depth (ft)	+N/-S (ft)	+E/-W (ft)	Vertical Section (ft)	Dogleg Rate (°/100ft)	Build Rate (°/100ft)	Turn Rate (°/100ft)
9,500.00	89.76	269.67	6,352.86	351.88	-3,024.36	3,034.06	0.00	0.00	0.00
9,600.00	89.76	269.67	6,353.28	351.30	-3,124.36	3,133.99	0.00	0.00	0.00
9,700.00	89.76	269.67	6,353.70	350.72	-3,224.36	3,233.92	0.00	0.00	0.00
9,800.00	89.76	269.67	6,354.11	350.14	-3,324.35	3,333.84	0.00	0.00	0.00
9,900.00	89.76	269.67	6,354.53	349.56	-3,424.35	3,433.77	0.00	0.00	0.00
10,000.00	89.76	269.67	6,354.94	348.98	-3,524.35	3,533.70	0.00	0.00	0.00
10,100.00	89.76	269.67	6,355.36	348.40	-3,624.35	3,633.63	0.00	0.00	0.00
10,200.00	89.76	269.67	6,355.78	347.82	-3,724.34	3,733.56	0.00	0.00	0.00
10,300.00	89.76	269.67	6,356.19	347.24	-3,824.34	3,833.48	0.00	0.00	0.00
10,400.00	89.76	269.67	6,356.61	346.66	-3,924.34	3,933.41	0.00	0.00	0.00
10,500.00	89.76	269.67	6,357.03	346.08	-4,024.34	4,033.34	0.00	0.00	0.00
10,600.00	89.76	269.67	6,357.44	345.50	-4,124.33	4,133.27	0.00	0.00	0.00
10,700.00	89.76	269.67	6,357.86	344.92	-4,224.33	4,233.19	0.00	0.00	0.00
10,800.00	89.76	269.67	6,358.28	344.34	-4,324.33	4,333.12	0.00	0.00	0.00
10,900.00	89.76	269.67	6,358.69	343.76	-4,424.33	4,433.05	0.00	0.00	0.00
11,000.00	89.76	269.67	6,359.11	343.18	-4,524.32	4,532.98	0.00	0.00	0.00
11,100.00	89.76	269.67	6,359.52	342.60	-4,624.32	4,632.91	0.00	0.00	0.00
11,200.00	89.76	269.67	6,359.94	342.02	-4,724.32	4,732.83	0.00	0.00	0.00
11,300.00	89.76	269.67	6,360.36	341.44	-4,824.32	4,832.76	0.00	0.00	0.00
11,400.00	89.76	269.67	6,360.77	340.86	-4,924.31	4,932.69	0.00	0.00	0.00
11,500.00	89.76	269.67	6,361.19	340.28	-5,024.31	5,032.62	0.00	0.00	0.00
11,600.00	89.76	269.67	6,361.61	339.70	-5,124.31	5,132.55	0.00	0.00	0.00
11,700.00	89.76	269.67	6,362.02	339.12	-5,224.31	5,232.47	0.00	0.00	0.00
11,800.00	89.76	269.67	6,362.44	338.54	-5,324.30	5,332.40	0.00	0.00	0.00
11,900.00	89.76	269.67	6,362.85	337.96	-5,424.30	5,432.33	0.00	0.00	0.00
12,000.00	89.76	269.67	6,363.27	337.38	-5,524.30	5,532.26	0.00	0.00	0.00
12,100.00	89.76	269.67	6,363.69	336.80	-5,624.30	5,632.19	0.00	0.00	0.00
12,200.00	89.76	269.67	6,364.10	336.22	-5,724.29	5,732.11	0.00	0.00	0.00
12,300.00	89.76	269.67	6,364.52	335.64	-5,824.29	5,832.04	0.00	0.00	0.00
12,400.00	89.76	269.67	6,364.94	335.06	-5,924.29	5,931.97	0.00	0.00	0.00
12,500.00	89.76	269.67	6,365.35	334.48	-6,024.29	6,031.90	0.00	0.00	0.00
12,600.00	89.76	269.67	6,365.77	333.90	-6,124.28	6,131.82	0.00	0.00	0.00
12,700.00	89.76	269.67	6,366.19	333.32	-6,224.28	6,231.75	0.00	0.00	0.00
12,800.00	89.76	269.67	6,366.60	332.74	-6,324.28	6,331.68	0.00	0.00	0.00
12,900.00	89.76	269.67	6,367.02	332.16	-6,424.28	6,431.61	0.00	0.00	0.00
13,000.00	89.76	269.67	6,367.43	331.58	-6,524.27	6,531.54	0.00	0.00	0.00
13,100.00	89.76	269.67	6,367.85	331.00	-6,624.27	6,631.46	0.00	0.00	0.00
13,200.00	89.76	269.67	6,368.27	330.42	-6,724.27	6,731.39	0.00	0.00	0.00
13,300.00	89.76	269.67	6,368.68	329.84	-6,824.27	6,831.32	0.00	0.00	0.00
13,400.00	89.76	269.67	6,369.10	329.26	-6,924.26	6,931.25	0.00	0.00	0.00
13,500.00	89.76	269.67	6,369.52	328.68	-7,024.26	7,031.18	0.00	0.00	0.00
13,600.00	89.76	269.67	6,369.93	328.10	-7,124.26	7,131.10	0.00	0.00	0.00
13,700.00	89.76	269.67	6,370.35	327.52	-7,224.26	7,231.03	0.00	0.00	0.00
13,800.00	89.76	269.67	6,370.77	326.94	-7,324.25	7,330.96	0.00	0.00	0.00
13,900.00	89.76	269.67	6,371.18	326.36	-7,424.25	7,430.89	0.00	0.00	0.00
14,000.00	89.76	269.67	6,371.60	325.78	-7,524.25	7,530.81	0.00	0.00	0.00
14,100.00	89.76	269.67	6,372.01	325.20	-7,624.25	7,630.74	0.00	0.00	0.00
14,200.00	89.76	269.67	6,372.43	324.62	-7,724.24	7,730.67	0.00	0.00	0.00
14,300.00	89.76	269.67	6,372.85	324.04	-7,824.24	7,830.60	0.00	0.00	0.00
14,400.00	89.76	269.67	6,373.26	323.46	-7,924.24	7,930.53	0.00	0.00	0.00
14,500.00	89.76	269.67	6,373.68	322.88	-8,024.23	8,030.45	0.00	0.00	0.00
14,600.00	89.76	269.67	6,374.10	322.30	-8,124.23	8,130.38	0.00	0.00	0.00
14,700.00	89.76	269.67	6,374.51	321.72	-8,224.23	8,230.31	0.00	0.00	0.00

<b>Database:</b>	Casper District	<b>Local Co-ordinate Reference:</b>	Well Anschutz Equus Farms 03-62-04-2532D2
<b>Company:</b>	Bill Barrett Corp.	<b>TVD Reference:</b>	GL 4613 @ 4613.00ft (Original Well Elev)
<b>Project:</b>	Weld County, CO NAD 83	<b>MD Reference:</b>	GL 4613 @ 4613.00ft (Original Well Elev)
<b>Site:</b>	Anschutz Equus Farms 3-62-4_5 CE2 Pad	<b>North Reference:</b>	True
<b>Well:</b>	Anschutz Equus Farms 03-62-04-2532D2	<b>Survey Calculation Method:</b>	Minimum Curvature
<b>Wellbore:</b>	OH		
<b>Design:</b>	Plan #1		

Planned Survey										
Measured Depth (ft)	Inclination (°)	Azimuth (°)	Vertical Depth (ft)	+N/-S (ft)	+E/-W (ft)	Vertical Section (ft)	Dogleg Rate (°/100ft)	Build Rate (°/100ft)	Turn Rate (°/100ft)	
14,800.00	89.76	269.67	6,374.93	321.14	-8,324.23	8,330.24	0.00	0.00	0.00	
14,900.00	89.76	269.67	6,375.34	320.56	-8,424.22	8,430.17	0.00	0.00	0.00	
15,000.00	89.76	269.67	6,375.76	319.98	-8,524.22	8,530.09	0.00	0.00	0.00	
15,100.00	89.76	269.67	6,376.18	319.40	-8,624.22	8,630.02	0.00	0.00	0.00	
15,200.00	89.76	269.67	6,376.59	318.82	-8,724.22	8,729.95	0.00	0.00	0.00	
15,300.00	89.76	269.67	6,377.01	318.24	-8,824.21	8,829.88	0.00	0.00	0.00	
15,400.00	89.76	269.67	6,377.43	317.66	-8,924.21	8,929.81	0.00	0.00	0.00	
15,500.00	89.76	269.67	6,377.84	317.09	-9,024.21	9,029.73	0.00	0.00	0.00	
15,600.00	89.76	269.67	6,378.26	316.51	-9,124.21	9,129.66	0.00	0.00	0.00	
15,700.00	89.76	269.67	6,378.68	315.93	-9,224.20	9,229.59	0.00	0.00	0.00	
15,800.00	89.76	269.67	6,379.09	315.35	-9,324.20	9,329.52	0.00	0.00	0.00	
15,900.00	89.76	269.67	6,379.51	314.77	-9,424.20	9,429.44	0.00	0.00	0.00	
16,000.00	89.76	269.67	6,379.92	314.19	-9,524.20	9,529.37	0.00	0.00	0.00	
16,100.00	89.76	269.67	6,380.34	313.61	-9,624.19	9,629.30	0.00	0.00	0.00	
16,200.00	89.76	269.67	6,380.76	313.03	-9,724.19	9,729.23	0.00	0.00	0.00	
16,258.42	89.76	269.67	6,381.00	312.69	-9,782.61	9,787.60	0.00	0.00	0.00	
TD at 16258.42 - 03-62-04-2532D2 PBHL										

Design Targets										
Target Name	Dip Angle (°)	Dip Dir. (°)	TVD (ft)	+N/-S (ft)	+E/-W (ft)	Northing (usft)	Easting (usft)	Latitude	Longitude	
03-62-04-2532D2 LP	0.00	0.00	6,341.00	368.40	-175.22	1,338,179.19	3,329,018.07	40° 15' 20.510 N	104° 19' 16.050 W	
- hit/miss target										
- Shape										
- plan misses target center by 0.01ft at 6650.78ft MD (6341.00 TVD, 368.40 N, -175.22 E)										
- Point										
03-62-04-2532D2 PBHL	0.00	0.00	6,381.00	312.69	-9,782.61	1,337,995.69	3,319,412.29	40° 15' 19.940 N	104° 21' 19.970 W	
- plan hits target center										
- Point										

Plan Annotations					
Measured Depth (ft)	Vertical Depth (ft)	Local Coordinates			
		+N/-S (ft)	+E/-W (ft)	Comment	
800.00	800.00	0.00	0.00	Start Build 2.00	
1,300.16	1,297.63	33.86	27.39	Start 2246.91 hold at 1300.16 MD	
3,547.07	3,510.37	337.30	272.86	Start Drop -2.00	
4,047.23	4,008.00	371.16	300.25	Start 1855.54 hold at 4047.23 MD	
5,902.77	5,863.54	371.16	300.25	Start DLS 12.00 TFO 269.67	
6,650.78	6,341.00	368.40	-175.22	Start 9607.63 hold at 6650.78 MD	
16,258.42	6,381.00	312.69	-9,782.61	TD at 16258.42	