

PROJECT DETAILS: Weld County, CO NAD 83

Geodetic System: US State Plane 1983
 Datum: North American Datum 1983
 Ellipsoid: GRS 1980
 Zone: Colorado Northern Zone
 System Datum: Mean Sea Level
 Local North: True

Project: Weld County, CO NAD 83
 Site: Anschutz Equus Farms 3-62-4.5 CE2 Pad
 Well: Anschutz Equus Farms 03-62-04-2532B2
 Wellbore: OH
 Design: Plan #1



Azimuths to True North
 Magnetic North: 8.22°

Magnetic Field
 Strength: 52545.4nT
 Dip Angle: 66.91°
 Date: 2/10/2016
 Model: BGGM2015

SECTION DETAILS

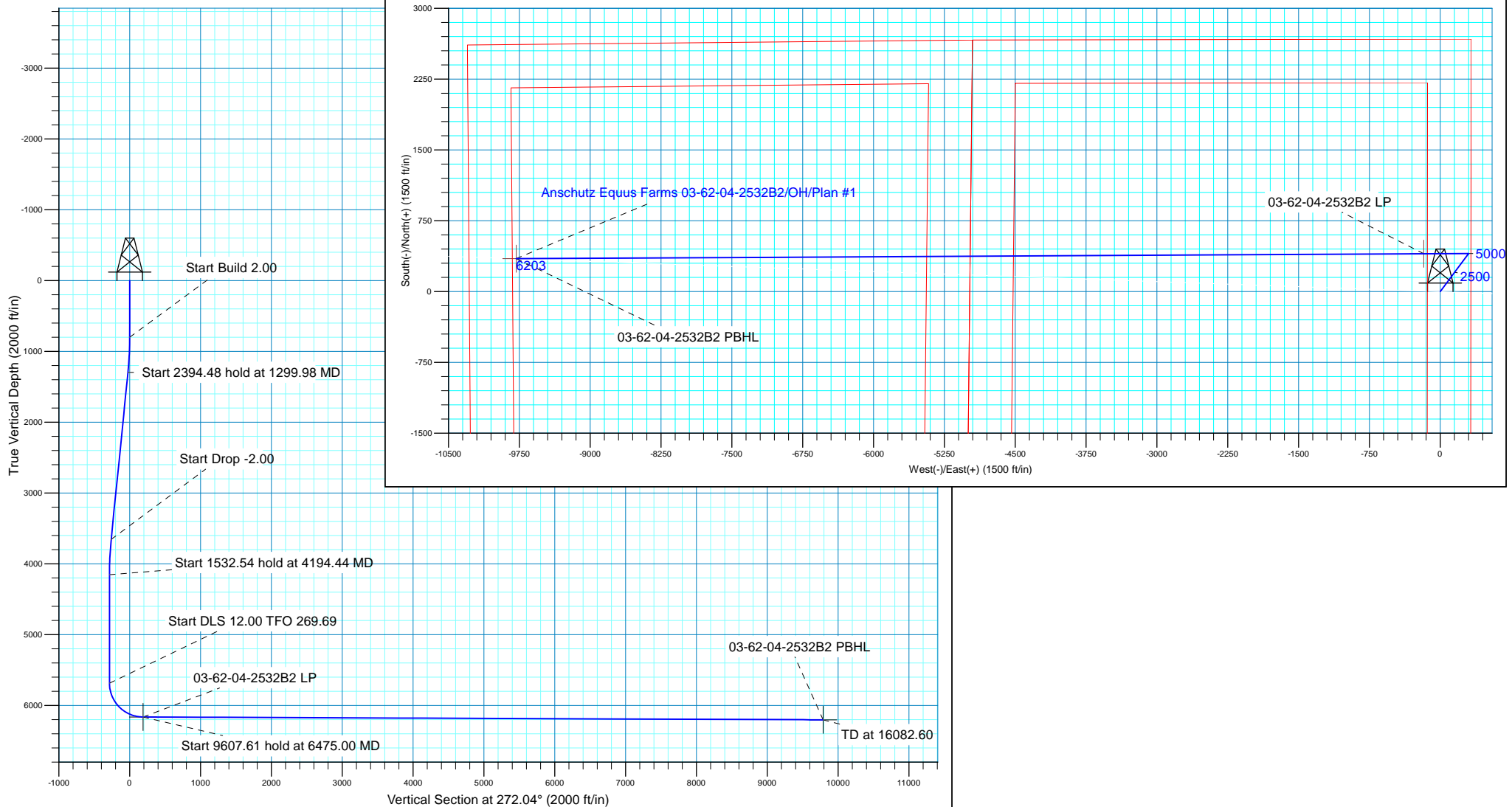
MD	Inc	Azi	TVD	+N/-S	+E/-W	Dleg	TFace	VSect
0.00	0.00	0.00	0.00	0.00	0.00	0.00	0.00	0.00
800.00	0.00	0.00	800.00	0.00	0.00	0.00	0.00	0.00
1299.98	10.00	36.67	1297.45	34.91	25.99	2.00	36.67	-24.73
3694.46	10.00	36.67	3655.55	368.42	274.27	0.00	0.00	-261.00
4194.44	0.00	0.00	4153.00	403.33	300.26	2.00	180.00	-285.73
5726.98	0.00	0.00	5685.54	403.33	300.26	0.00	0.00	-285.73
6475.00	89.76	269.69	6163.00	400.72	-175.21	12.00	269.69	189.34
16082.60	89.76	269.69	6203.00	348.01	-9782.59	0.00	0.00	9788.78

Plan: Plan #1 (Anschutz Equus Farms 03-62-04-2532B2/OH)

Created By: rscott Date: 18:17, February 15 2016

WELL DETAILS: Anschutz Equus Farms 03-62-04-2532B2

GL 4613 @ 4613.00ft (Original Well Elev) 4613.00
 Northing Easting Latitude Longitude
 0.00 0.00 1337828.38 3329197.9640° 15' 17.020104° 19' 13.790 W





Bill Barrett Corp.

Weld County, CO NAD 83

Anschutz Equus Farms 3-62-4_5 CE2 Pad

Anschutz Equus Farms 03-62-04-2532B2

OH

Plan: Plan #1

Standard Planning Report

15 February, 2016



Database:	Casper District	Local Co-ordinate Reference:	Well Anschutz Equus Farms 03-62-04-2532B2
Company:	Bill Barrett Corp.	TVD Reference:	GL 4613 @ 4613.00ft (Original Well Elev)
Project:	Weld County, CO NAD 83	MD Reference:	GL 4613 @ 4613.00ft (Original Well Elev)
Site:	Anschutz Equus Farms 3-62-4_5 CE2 Pad	North Reference:	True
Well:	Anschutz Equus Farms 03-62-04-2532B2	Survey Calculation Method:	Minimum Curvature
Wellbore:	OH		
Design:	Plan #1		

Project	Weld County, CO NAD 83		
Map System:	US State Plane 1983	System Datum:	Mean Sea Level
Geo Datum:	North American Datum 1983		
Map Zone:	Colorado Northern Zone		

Site	Anschutz Equus Farms 3-62-4_5 CE2 Pad, SECTION 4, T3N, R62W, 6TH P.M.		
Site Position:		Northing:	1,337,767.63 usft
From:	Lat/Long	Easting:	3,329,198.00 usft
Position Uncertainty:	0.00 ft	Slot Radius:	13.200 in
		Latitude:	40° 15' 16.420 N
		Longitude:	104° 19' 13.800 W
		Grid Convergence:	0.76 °

Well	Anschutz Equus Farms 03-62-04-2532B2, 2550 FSL 325 FEL		
Well Position	+N/-S	60.75 ft	Northing: 1,337,828.38 usft
	+E/-W	0.78 ft	Easting: 3,329,197.97 usft
Position Uncertainty	0.00 ft	Wellhead Elevation:	0.00 ft
		Latitude:	40° 15' 17.020 N
		Longitude:	104° 19' 13.790 W
		Ground Level:	4,613.00 ft

Wellbore	OH				
Magnetics	Model Name	Sample Date	Declination (°)	Dip Angle (°)	Field Strength (nT)
	BGGM2015	2/10/2016	8.22	66.91	52,545

Design	Plan #1			
Audit Notes:				
Version:	Phase:	PLAN	Tie On Depth:	0.00
Vertical Section:	Depth From (TVD) (ft)	+N/-S (ft)	+E/-W (ft)	Direction (°)
	0.00	0.00	0.00	272.04

Plan Sections										
Measured Depth (ft)	Inclination (°)	Azimuth (°)	Vertical Depth (ft)	+N/-S (ft)	+E/-W (ft)	Dogleg Rate (°/100ft)	Build Rate (°/100ft)	Turn Rate (°/100ft)	TFO (°)	Target
0.00	0.00	0.00	0.00	0.00	0.00	0.00	0.00	0.00	0.00	
800.00	0.00	0.00	800.00	0.00	0.00	0.00	0.00	0.00	0.00	
1,299.98	10.00	36.67	1,297.45	34.91	25.99	2.00	2.00	0.00	36.67	
3,694.46	10.00	36.67	3,655.55	368.42	274.27	0.00	0.00	0.00	0.00	
4,194.44	0.00	0.00	4,153.00	403.33	300.26	2.00	-2.00	0.00	180.00	
5,726.98	0.00	0.00	5,685.54	403.33	300.26	0.00	0.00	0.00	0.00	
6,475.00	89.76	269.69	6,163.00	400.72	-175.21	12.00	12.00	-12.07	269.69	
16,082.60	89.76	269.69	6,203.00	348.01	-9,782.59	0.00	0.00	0.00	0.00	03-62-04-2532B2 PBI

Database:	Casper District	Local Co-ordinate Reference:	Well Anschutz Equus Farms 03-62-04-2532B2
Company:	Bill Barrett Corp.	TVD Reference:	GL 4613 @ 4613.00ft (Original Well Elev)
Project:	Weld County, CO NAD 83	MD Reference:	GL 4613 @ 4613.00ft (Original Well Elev)
Site:	Anschutz Equus Farms 3-62-4_5 CE2 Pad	North Reference:	True
Well:	Anschutz Equus Farms 03-62-04-2532B2	Survey Calculation Method:	Minimum Curvature
Wellbore:	OH		
Design:	Plan #1		

Planned Survey									
Measured Depth (ft)	Inclination (°)	Azimuth (°)	Vertical Depth (ft)	+N/-S (ft)	+E/-W (ft)	Vertical Section (ft)	Dogleg Rate (°/100ft)	Build Rate (°/100ft)	Turn Rate (°/100ft)
0.00	0.00	0.00	0.00	0.00	0.00	0.00	0.00	0.00	0.00
100.00	0.00	0.00	100.00	0.00	0.00	0.00	0.00	0.00	0.00
200.00	0.00	0.00	200.00	0.00	0.00	0.00	0.00	0.00	0.00
300.00	0.00	0.00	300.00	0.00	0.00	0.00	0.00	0.00	0.00
400.00	0.00	0.00	400.00	0.00	0.00	0.00	0.00	0.00	0.00
500.00	0.00	0.00	500.00	0.00	0.00	0.00	0.00	0.00	0.00
600.00	0.00	0.00	600.00	0.00	0.00	0.00	0.00	0.00	0.00
700.00	0.00	0.00	700.00	0.00	0.00	0.00	0.00	0.00	0.00
800.00	0.00	0.00	800.00	0.00	0.00	0.00	0.00	0.00	0.00
Start Build 2.00									
900.00	2.00	36.67	899.98	1.40	1.04	-0.99	2.00	2.00	0.00
1,000.00	4.00	36.67	999.84	5.60	4.17	-3.97	2.00	2.00	0.00
1,100.00	6.00	36.67	1,099.45	12.59	9.37	-8.92	2.00	2.00	0.00
1,200.00	8.00	36.67	1,198.70	22.36	16.65	-15.84	2.00	2.00	0.00
1,299.98	10.00	36.67	1,297.45	34.91	25.99	-24.73	2.00	2.00	0.00
Start 2394.48 hold at 1299.98 MD									
1,300.00	10.00	36.67	1,297.47	34.91	25.99	-24.73	0.00	0.00	0.00
1,400.00	10.00	36.67	1,395.95	48.84	36.36	-34.60	0.00	0.00	0.00
1,500.00	10.00	36.67	1,494.43	62.77	46.73	-44.47	0.00	0.00	0.00
1,600.00	10.00	36.67	1,592.91	76.70	57.10	-54.33	0.00	0.00	0.00
1,700.00	10.00	36.67	1,691.39	90.62	67.47	-64.20	0.00	0.00	0.00
1,800.00	10.00	36.67	1,789.87	104.55	77.83	-74.07	0.00	0.00	0.00
1,900.00	10.00	36.67	1,888.35	118.48	88.20	-83.94	0.00	0.00	0.00
2,000.00	10.00	36.67	1,986.83	132.41	98.57	-93.80	0.00	0.00	0.00
2,100.00	10.00	36.67	2,085.31	146.34	108.94	-103.67	0.00	0.00	0.00
2,200.00	10.00	36.67	2,183.79	160.27	119.31	-113.54	0.00	0.00	0.00
2,300.00	10.00	36.67	2,282.27	174.20	129.68	-123.41	0.00	0.00	0.00
2,400.00	10.00	36.67	2,380.76	188.12	140.05	-133.27	0.00	0.00	0.00
2,500.00	10.00	36.67	2,479.24	202.05	150.42	-143.14	0.00	0.00	0.00
2,600.00	10.00	36.67	2,577.72	215.98	160.79	-153.01	0.00	0.00	0.00
2,700.00	10.00	36.67	2,676.20	229.91	171.16	-162.88	0.00	0.00	0.00
2,800.00	10.00	36.67	2,774.68	243.84	181.53	-172.74	0.00	0.00	0.00
2,900.00	10.00	36.67	2,873.16	257.77	191.89	-182.61	0.00	0.00	0.00
3,000.00	10.00	36.67	2,971.64	271.69	202.26	-192.48	0.00	0.00	0.00
3,100.00	10.00	36.67	3,070.12	285.62	212.63	-202.34	0.00	0.00	0.00
3,200.00	10.00	36.67	3,168.60	299.55	223.00	-212.21	0.00	0.00	0.00
3,300.00	10.00	36.67	3,267.08	313.48	233.37	-222.08	0.00	0.00	0.00
3,400.00	10.00	36.67	3,365.56	327.41	243.74	-231.95	0.00	0.00	0.00
3,500.00	10.00	36.67	3,464.04	341.34	254.11	-241.81	0.00	0.00	0.00
3,600.00	10.00	36.67	3,562.53	355.26	264.48	-251.68	0.00	0.00	0.00
3,694.46	10.00	36.67	3,655.55	368.42	274.27	-261.00	0.00	0.00	0.00
Start Drop -2.00									
3,700.00	9.89	36.67	3,661.01	369.19	274.84	-261.55	2.00	-2.00	0.00
3,800.00	7.89	36.67	3,759.80	381.58	284.07	-270.33	2.00	-2.00	0.00
3,900.00	5.89	36.67	3,859.07	391.20	291.23	-277.14	2.00	-2.00	0.00
4,000.00	3.89	36.67	3,958.71	398.04	296.32	-281.98	2.00	-2.00	0.00
4,100.00	1.89	36.67	4,058.57	402.08	299.33	-284.85	2.00	-2.00	0.00
4,194.44	0.00	0.00	4,153.00	403.33	300.26	-285.73	2.00	-2.00	0.00
Start 1532.54 hold at 4194.44 MD									
4,200.00	0.00	0.00	4,158.56	403.33	300.26	-285.73	0.00	0.00	0.00
4,300.00	0.00	0.00	4,258.56	403.33	300.26	-285.73	0.00	0.00	0.00
4,400.00	0.00	0.00	4,358.56	403.33	300.26	-285.73	0.00	0.00	0.00
4,500.00	0.00	0.00	4,458.56	403.33	300.26	-285.73	0.00	0.00	0.00

Database:	Casper District	Local Co-ordinate Reference:	Well Anschutz Equus Farms 03-62-04-2532B2
Company:	Bill Barrett Corp.	TVD Reference:	GL 4613 @ 4613.00ft (Original Well Elev)
Project:	Weld County, CO NAD 83	MD Reference:	GL 4613 @ 4613.00ft (Original Well Elev)
Site:	Anschutz Equus Farms 3-62-4_5 CE2 Pad	North Reference:	True
Well:	Anschutz Equus Farms 03-62-04-2532B2	Survey Calculation Method:	Minimum Curvature
Wellbore:	OH		
Design:	Plan #1		

Planned Survey									
Measured Depth (ft)	Inclination (°)	Azimuth (°)	Vertical Depth (ft)	+N/-S (ft)	+E/-W (ft)	Vertical Section (ft)	Dogleg Rate (°/100ft)	Build Rate (°/100ft)	Turn Rate (°/100ft)
4,600.00	0.00	0.00	4,558.56	403.33	300.26	-285.73	0.00	0.00	0.00
4,700.00	0.00	0.00	4,658.56	403.33	300.26	-285.73	0.00	0.00	0.00
4,800.00	0.00	0.00	4,758.56	403.33	300.26	-285.73	0.00	0.00	0.00
4,900.00	0.00	0.00	4,858.56	403.33	300.26	-285.73	0.00	0.00	0.00
5,000.00	0.00	0.00	4,958.56	403.33	300.26	-285.73	0.00	0.00	0.00
5,100.00	0.00	0.00	5,058.56	403.33	300.26	-285.73	0.00	0.00	0.00
5,200.00	0.00	0.00	5,158.56	403.33	300.26	-285.73	0.00	0.00	0.00
5,300.00	0.00	0.00	5,258.56	403.33	300.26	-285.73	0.00	0.00	0.00
5,400.00	0.00	0.00	5,358.56	403.33	300.26	-285.73	0.00	0.00	0.00
5,500.00	0.00	0.00	5,458.56	403.33	300.26	-285.73	0.00	0.00	0.00
5,600.00	0.00	0.00	5,558.56	403.33	300.26	-285.73	0.00	0.00	0.00
5,700.00	0.00	0.00	5,658.56	403.33	300.26	-285.73	0.00	0.00	0.00
5,726.98	0.00	0.00	5,685.54	403.33	300.26	-285.73	0.00	0.00	0.00
Start DLS 12.00 TFO 269.69									
5,800.00	8.76	269.69	5,758.27	403.30	294.69	-280.17	12.00	12.00	0.00
5,900.00	20.76	269.69	5,854.79	403.16	269.25	-254.75	12.00	12.00	0.00
6,000.00	32.76	269.69	5,943.92	402.91	224.31	-209.84	12.00	12.00	0.00
6,100.00	44.76	269.69	6,021.75	402.57	161.82	-147.40	12.00	12.00	0.00
6,200.00	56.76	269.69	6,084.89	402.15	84.51	-70.16	12.00	12.00	0.00
6,300.00	68.76	269.69	6,130.58	401.66	-4.24	18.52	12.00	12.00	0.00
6,400.00	80.76	269.69	6,156.81	401.13	-100.55	114.74	12.00	12.00	0.00
6,475.00	89.76	269.69	6,163.00	400.72	-175.21	189.35	12.00	12.00	0.00
Start 9607.61 hold at 6475.00 MD - 03-62-04-2532B2 LP									
6,500.00	89.76	269.69	6,163.10	400.58	-200.21	214.33	0.00	0.00	0.00
6,600.00	89.76	269.69	6,163.52	400.04	-300.21	314.24	0.00	0.00	0.00
6,700.00	89.76	269.69	6,163.94	399.49	-400.21	414.16	0.00	0.00	0.00
6,800.00	89.76	269.69	6,164.35	398.94	-500.21	514.07	0.00	0.00	0.00
6,900.00	89.76	269.69	6,164.77	398.39	-600.20	613.99	0.00	0.00	0.00
7,000.00	89.76	269.69	6,165.19	397.84	-700.20	713.90	0.00	0.00	0.00
7,100.00	89.76	269.69	6,165.60	397.29	-800.20	813.82	0.00	0.00	0.00
7,200.00	89.76	269.69	6,166.02	396.74	-900.20	913.73	0.00	0.00	0.00
7,300.00	89.76	269.69	6,166.44	396.20	-1,000.19	1,013.65	0.00	0.00	0.00
7,400.00	89.76	269.69	6,166.85	395.65	-1,100.19	1,113.56	0.00	0.00	0.00
7,500.00	89.76	269.69	6,167.27	395.10	-1,200.19	1,213.48	0.00	0.00	0.00
7,600.00	89.76	269.69	6,167.68	394.55	-1,300.19	1,313.39	0.00	0.00	0.00
7,700.00	89.76	269.69	6,168.10	394.00	-1,400.18	1,413.31	0.00	0.00	0.00
7,800.00	89.76	269.69	6,168.52	393.45	-1,500.18	1,513.22	0.00	0.00	0.00
7,900.00	89.76	269.69	6,168.93	392.90	-1,600.18	1,613.14	0.00	0.00	0.00
8,000.00	89.76	269.69	6,169.35	392.36	-1,700.18	1,713.05	0.00	0.00	0.00
8,100.00	89.76	269.69	6,169.77	391.81	-1,800.18	1,812.97	0.00	0.00	0.00
8,200.00	89.76	269.69	6,170.18	391.26	-1,900.17	1,912.88	0.00	0.00	0.00
8,300.00	89.76	269.69	6,170.60	390.71	-2,000.17	2,012.80	0.00	0.00	0.00
8,400.00	89.76	269.69	6,171.02	390.16	-2,100.17	2,112.71	0.00	0.00	0.00
8,500.00	89.76	269.69	6,171.43	389.61	-2,200.17	2,212.63	0.00	0.00	0.00
8,600.00	89.76	269.69	6,171.85	389.06	-2,300.16	2,312.54	0.00	0.00	0.00
8,700.00	89.76	269.69	6,172.26	388.52	-2,400.16	2,412.46	0.00	0.00	0.00
8,800.00	89.76	269.69	6,172.68	387.97	-2,500.16	2,512.37	0.00	0.00	0.00
8,900.00	89.76	269.69	6,173.10	387.42	-2,600.16	2,612.28	0.00	0.00	0.00
9,000.00	89.76	269.69	6,173.51	386.87	-2,700.15	2,712.20	0.00	0.00	0.00
9,100.00	89.76	269.69	6,173.93	386.32	-2,800.15	2,812.11	0.00	0.00	0.00
9,200.00	89.76	269.69	6,174.35	385.77	-2,900.15	2,912.03	0.00	0.00	0.00
9,300.00	89.76	269.69	6,174.76	385.22	-3,000.15	3,011.94	0.00	0.00	0.00
9,400.00	89.76	269.69	6,175.18	384.68	-3,100.14	3,111.86	0.00	0.00	0.00

Database:	Casper District	Local Co-ordinate Reference:	Well Anschutz Equus Farms 03-62-04-2532B2
Company:	Bill Barrett Corp.	TVD Reference:	GL 4613 @ 4613.00ft (Original Well Elev)
Project:	Weld County, CO NAD 83	MD Reference:	GL 4613 @ 4613.00ft (Original Well Elev)
Site:	Anschutz Equus Farms 3-62-4_5 CE2 Pad	North Reference:	True
Well:	Anschutz Equus Farms 03-62-04-2532B2	Survey Calculation Method:	Minimum Curvature
Wellbore:	OH		
Design:	Plan #1		

Planned Survey									
Measured Depth (ft)	Inclination (°)	Azimuth (°)	Vertical Depth (ft)	+N/-S (ft)	+E/-W (ft)	Vertical Section (ft)	Dogleg Rate (°/100ft)	Build Rate (°/100ft)	Turn Rate (°/100ft)
9,500.00	89.76	269.69	6,175.59	384.13	-3,200.14	3,211.77	0.00	0.00	0.00
9,600.00	89.76	269.69	6,176.01	383.58	-3,300.14	3,311.69	0.00	0.00	0.00
9,700.00	89.76	269.69	6,176.43	383.03	-3,400.14	3,411.60	0.00	0.00	0.00
9,800.00	89.76	269.69	6,176.84	382.48	-3,500.13	3,511.52	0.00	0.00	0.00
9,900.00	89.76	269.69	6,177.26	381.93	-3,600.13	3,611.43	0.00	0.00	0.00
10,000.00	89.76	269.69	6,177.68	381.38	-3,700.13	3,711.35	0.00	0.00	0.00
10,100.00	89.76	269.69	6,178.09	380.83	-3,800.13	3,811.26	0.00	0.00	0.00
10,200.00	89.76	269.69	6,178.51	380.29	-3,900.13	3,911.18	0.00	0.00	0.00
10,300.00	89.76	269.69	6,178.93	379.74	-4,000.12	4,011.09	0.00	0.00	0.00
10,400.00	89.76	269.69	6,179.34	379.19	-4,100.12	4,111.01	0.00	0.00	0.00
10,500.00	89.76	269.69	6,179.76	378.64	-4,200.12	4,210.92	0.00	0.00	0.00
10,600.00	89.76	269.69	6,180.17	378.09	-4,300.12	4,310.84	0.00	0.00	0.00
10,700.00	89.76	269.69	6,180.59	377.54	-4,400.11	4,410.75	0.00	0.00	0.00
10,800.00	89.76	269.69	6,181.01	376.99	-4,500.11	4,510.67	0.00	0.00	0.00
10,900.00	89.76	269.69	6,181.42	376.45	-4,600.11	4,610.58	0.00	0.00	0.00
11,000.00	89.76	269.69	6,181.84	375.90	-4,700.11	4,710.50	0.00	0.00	0.00
11,100.00	89.76	269.69	6,182.26	375.35	-4,800.10	4,810.41	0.00	0.00	0.00
11,200.00	89.76	269.69	6,182.67	374.80	-4,900.10	4,910.33	0.00	0.00	0.00
11,300.00	89.76	269.69	6,183.09	374.25	-5,000.10	5,010.24	0.00	0.00	0.00
11,400.00	89.76	269.69	6,183.51	373.70	-5,100.10	5,110.16	0.00	0.00	0.00
11,500.00	89.76	269.69	6,183.92	373.15	-5,200.09	5,210.07	0.00	0.00	0.00
11,600.00	89.76	269.69	6,184.34	372.61	-5,300.09	5,309.99	0.00	0.00	0.00
11,700.00	89.76	269.69	6,184.75	372.06	-5,400.09	5,409.90	0.00	0.00	0.00
11,800.00	89.76	269.69	6,185.17	371.51	-5,500.09	5,509.82	0.00	0.00	0.00
11,900.00	89.76	269.69	6,185.59	370.96	-5,600.09	5,609.73	0.00	0.00	0.00
12,000.00	89.76	269.69	6,186.00	370.41	-5,700.08	5,709.65	0.00	0.00	0.00
12,100.00	89.76	269.69	6,186.42	369.86	-5,800.08	5,809.56	0.00	0.00	0.00
12,200.00	89.76	269.69	6,186.84	369.31	-5,900.08	5,909.48	0.00	0.00	0.00
12,300.00	89.76	269.69	6,187.25	368.77	-6,000.08	6,009.39	0.00	0.00	0.00
12,400.00	89.76	269.69	6,187.67	368.22	-6,100.07	6,109.31	0.00	0.00	0.00
12,500.00	89.76	269.69	6,188.08	367.67	-6,200.07	6,209.22	0.00	0.00	0.00
12,600.00	89.76	269.69	6,188.50	367.12	-6,300.07	6,309.14	0.00	0.00	0.00
12,700.00	89.76	269.69	6,188.92	366.57	-6,400.07	6,409.05	0.00	0.00	0.00
12,800.00	89.76	269.69	6,189.33	366.02	-6,500.06	6,508.97	0.00	0.00	0.00
12,900.00	89.76	269.69	6,189.75	365.47	-6,600.06	6,608.88	0.00	0.00	0.00
13,000.00	89.76	269.69	6,190.17	364.93	-6,700.06	6,708.80	0.00	0.00	0.00
13,100.00	89.76	269.69	6,190.58	364.38	-6,800.06	6,808.71	0.00	0.00	0.00
13,200.00	89.76	269.69	6,191.00	363.83	-6,900.05	6,908.63	0.00	0.00	0.00
13,300.00	89.76	269.69	6,191.42	363.28	-7,000.05	7,008.54	0.00	0.00	0.00
13,400.00	89.76	269.69	6,191.83	362.73	-7,100.05	7,108.46	0.00	0.00	0.00
13,500.00	89.76	269.69	6,192.25	362.18	-7,200.05	7,208.37	0.00	0.00	0.00
13,600.00	89.76	269.69	6,192.66	361.63	-7,300.04	7,308.29	0.00	0.00	0.00
13,700.00	89.76	269.69	6,193.08	361.09	-7,400.04	7,408.20	0.00	0.00	0.00
13,800.00	89.76	269.69	6,193.50	360.54	-7,500.04	7,508.12	0.00	0.00	0.00
13,900.00	89.76	269.69	6,193.91	359.99	-7,600.04	7,608.03	0.00	0.00	0.00
14,000.00	89.76	269.69	6,194.33	359.44	-7,700.04	7,707.95	0.00	0.00	0.00
14,100.00	89.76	269.69	6,194.75	358.89	-7,800.03	7,807.86	0.00	0.00	0.00
14,200.00	89.76	269.69	6,195.16	358.34	-7,900.03	7,907.78	0.00	0.00	0.00
14,300.00	89.76	269.69	6,195.58	357.79	-8,000.03	8,007.69	0.00	0.00	0.00
14,400.00	89.76	269.69	6,195.99	357.25	-8,100.03	8,107.61	0.00	0.00	0.00
14,500.00	89.76	269.69	6,196.41	356.70	-8,200.02	8,207.52	0.00	0.00	0.00
14,600.00	89.76	269.69	6,196.83	356.15	-8,300.02	8,307.44	0.00	0.00	0.00
14,700.00	89.76	269.69	6,197.24	355.60	-8,400.02	8,407.35	0.00	0.00	0.00

Database:	Casper District	Local Co-ordinate Reference:	Well Anschutz Equus Farms 03-62-04-2532B2
Company:	Bill Barrett Corp.	TVD Reference:	GL 4613 @ 4613.00ft (Original Well Elev)
Project:	Weld County, CO NAD 83	MD Reference:	GL 4613 @ 4613.00ft (Original Well Elev)
Site:	Anschutz Equus Farms 3-62-4_5 CE2 Pad	North Reference:	True
Well:	Anschutz Equus Farms 03-62-04-2532B2	Survey Calculation Method:	Minimum Curvature
Wellbore:	OH		
Design:	Plan #1		

Planned Survey										
Measured Depth (ft)	Inclination (°)	Azimuth (°)	Vertical Depth (ft)	+N/-S (ft)	+E/-W (ft)	Vertical Section (ft)	Dogleg Rate (°/100ft)	Build Rate (°/100ft)	Turn Rate (°/100ft)	
14,800.00	89.76	269.69	6,197.66	355.05	-8,500.02	8,507.27	0.00	0.00	0.00	
14,900.00	89.76	269.69	6,198.08	354.50	-8,600.01	8,607.18	0.00	0.00	0.00	
15,000.00	89.76	269.69	6,198.49	353.95	-8,700.01	8,707.10	0.00	0.00	0.00	
15,100.00	89.76	269.69	6,198.91	353.41	-8,800.01	8,807.01	0.00	0.00	0.00	
15,200.00	89.76	269.69	6,199.33	352.86	-8,900.01	8,906.93	0.00	0.00	0.00	
15,300.00	89.76	269.69	6,199.74	352.31	-9,000.00	9,006.84	0.00	0.00	0.00	
15,400.00	89.76	269.69	6,200.16	351.76	-9,100.00	9,106.76	0.00	0.00	0.00	
15,500.00	89.76	269.69	6,200.57	351.21	-9,200.00	9,206.67	0.00	0.00	0.00	
15,600.00	89.76	269.69	6,200.99	350.66	-9,300.00	9,306.58	0.00	0.00	0.00	
15,700.00	89.76	269.69	6,201.41	350.11	-9,400.00	9,406.50	0.00	0.00	0.00	
15,800.00	89.76	269.69	6,201.82	349.56	-9,499.99	9,506.41	0.00	0.00	0.00	
15,900.00	89.76	269.69	6,202.24	349.02	-9,599.99	9,606.33	0.00	0.00	0.00	
16,000.00	89.76	269.69	6,202.66	348.47	-9,699.99	9,706.24	0.00	0.00	0.00	
16,082.60	89.76	269.69	6,203.00	348.01	-9,782.59	9,788.78	0.00	0.00	0.00	
TD at 16082.60 - 03-62-04-2532B2 PBHL										

Design Targets										
Target Name	Dip Angle (°)	Dip Dir. (°)	TVD (ft)	+N/-S (ft)	+E/-W (ft)	Northing (usft)	Easting (usft)	Latitude	Longitude	
03-62-04-2532B2 LP - hit/miss target - Shape - Point	0.00	0.00	6,163.00	400.72	-175.21	1,338,226.74	3,329,017.44	40° 15' 20.980 N	104° 19' 16.050 W	
03-62-04-2532B2 PBHL - plan hits target center - Point	0.00	0.00	6,203.00	348.01	-9,782.59	1,338,046.25	3,319,411.63	40° 15' 20.440 N	104° 21' 19.970 W	

Plan Annotations					
Measured Depth (ft)	Vertical Depth (ft)	Local Coordinates			
		+N/-S (ft)	+E/-W (ft)	Comment	
800.00	800.00	0.00	0.00	Start Build 2.00	
1,299.98	1,297.45	34.91	25.99	Start 2394.48 hold at 1299.98 MD	
3,694.46	3,655.55	368.42	274.27	Start Drop -2.00	
4,194.44	4,153.00	403.33	300.26	Start 1532.54 hold at 4194.44 MD	
5,726.98	5,685.54	403.33	300.26	Start DLS 12.00 TFO 269.69	
6,475.00	6,163.00	400.72	-175.21	Start 9607.61 hold at 6475.00 MD	
16,082.60	6,203.00	348.01	-9,782.59	TD at 16082.60	