



## PROJECT DETAILS: Weld County, CO NAD 83

Geodetic System: US State Plane 1983  
Datum: North American Datum 1983  
Ellipsoid: GRS 1980  
Zone: Colorado Northern Zone  
System Datum: Mean Sea Level  
Local North: True

Project: Weld County, CO NAD 83  
Site: SRC Fagerberg 13-12 Pad  
Well: Fagerberg 36C-7-M  
Wellbore: OH  
Design: Plan #2



Azimuths to True North  
Magnetic North: 8.49°



Magnetic Field  
Strength: 52600.5nT  
Dip Angle: 67.03°  
Date: 2/17/2016  
Model: BGGM2015

## SECTION DETAILS

MD	Inc	Azi	TVD	+N/-S	+E/-W	Dleg	TFace	VSect
0.00	0.00	0.00	0.00	0.00	0.00	0.00	0.00	0.00
300.00	0.00	0.00	300.00	0.00	0.00	0.00	0.00	0.00
901.76	12.04	189.72	897.35	-62.07	-10.63	2.00	189.72	-2.30
5753.85	12.04	189.72	5642.78	-1059.28	-181.37	0.00	0.00	-39.23
6355.61	0.00	0.00	6240.13	-1121.35	-192.00	2.00	180.00	-41.53
6855.61	0.00	0.00	6740.13	-1121.35	-192.00	0.00	0.00	-41.53
7673.80	90.00	90.00	7261.00	-1121.35	328.87	11.00	90.00	474.74
15722.14	90.00	90.00	7261.00	-1121.36	8377.21	0.00	0.00	8451.93

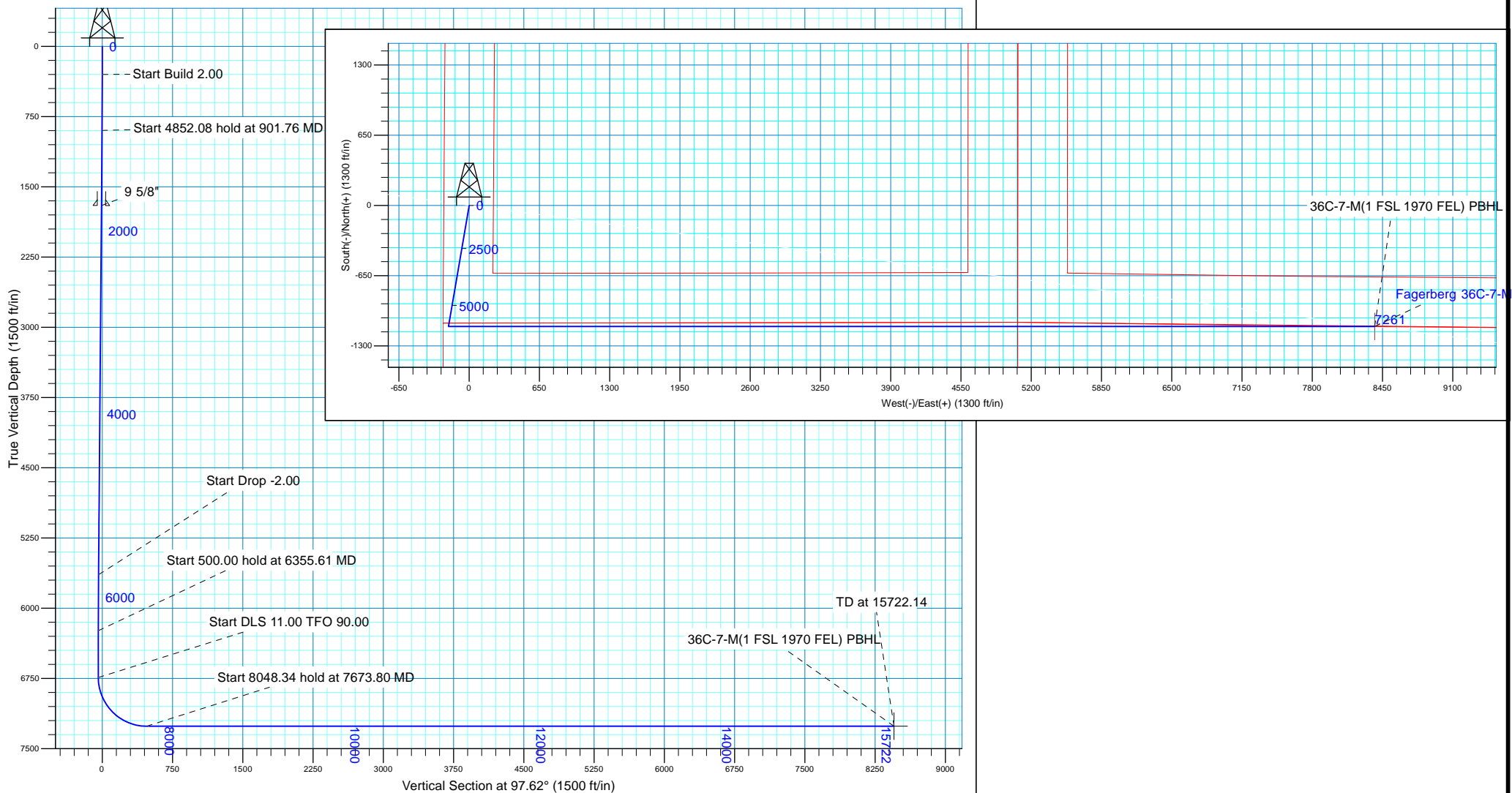
## WELL DETAILS: Fagerberg 36C-7-M

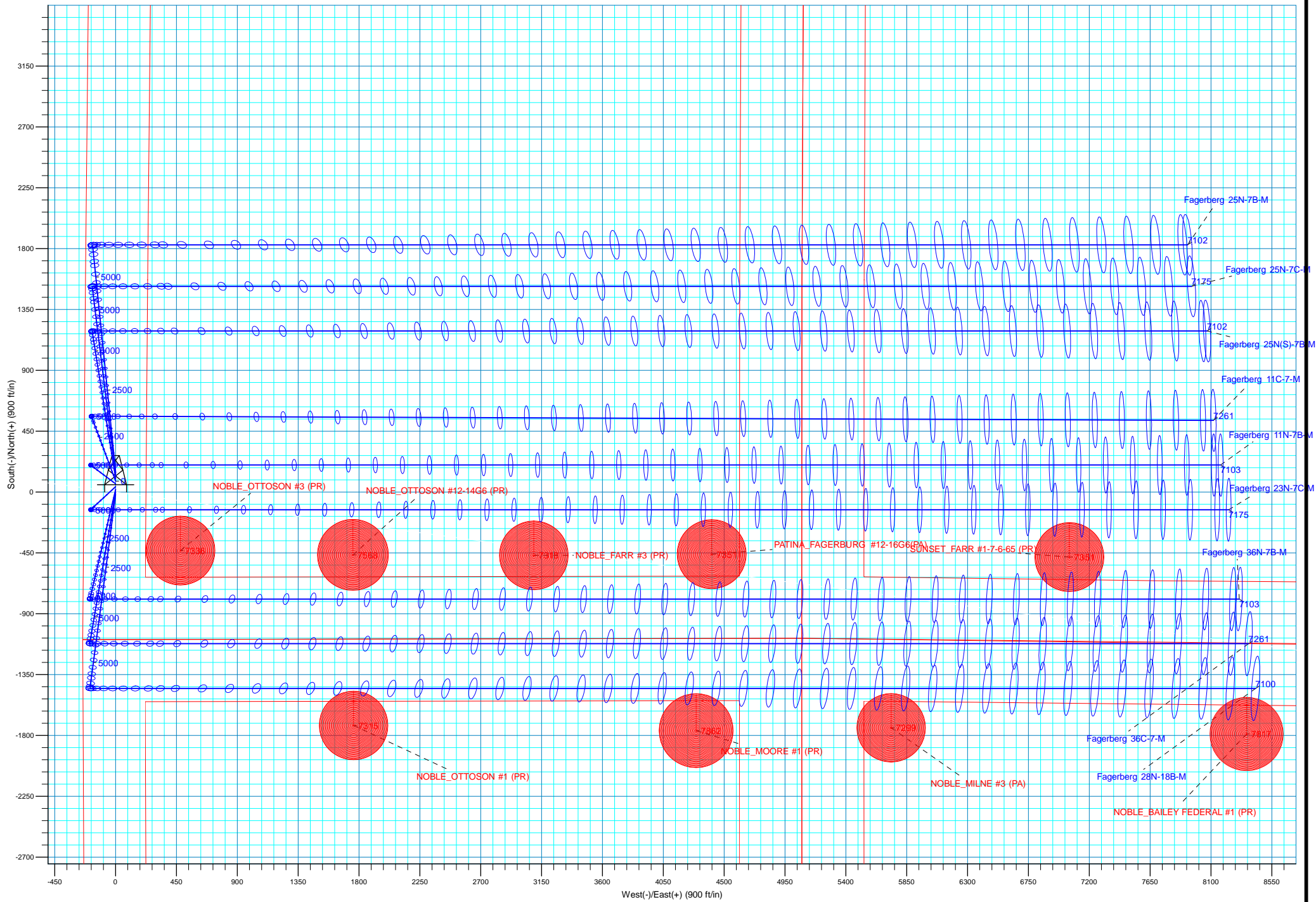
		GL 4800 & KB 20 @ 4820.00ft (PD 462)		4800.00	Longitude
+N/-S	+E/-W	Northing	Easting	Latitude	
0.00	0.00	1425387.87	3212990.23	40.4985660	-104.7341290

Plan: Plan #2 (Fagerberg 36C-7-M/OH)

## CASING DETAILS

Created By:	rscott	Date:	12:31, February 23 2016	TVD	MD	Name	Size
				1700.00	722.45	9 5/8"	9.625







## **Synergy Resources Corp.**

**Weld County, CO NAD 83  
SRC Fagerberg 13-12 Pad  
Fagerberg 36C-7-M**

**OH**

**Plan: Plan #2**

## **Standard Planning Report**

**23 February, 2016**



<b>Database:</b>	Casper District	<b>Local Co-ordinate Reference:</b>	Well Fagerberg 36C-7-M
<b>Company:</b>	Synergy Resources Corp.	<b>TVD Reference:</b>	GL 4800 & KB 20 @ 4820.00ft (PD 462)
<b>Project:</b>	Weld County, CO NAD 83	<b>MD Reference:</b>	GL 4800 & KB 20 @ 4820.00ft (PD 462)
<b>Site:</b>	SRC Fagerberg 13-12 Pad	<b>North Reference:</b>	True
<b>Well:</b>	Fagerberg 36C-7-M	<b>Survey Calculation Method:</b>	Minimum Curvature
<b>Wellbore:</b>	OH		
<b>Design:</b>	Plan #2		

<b>Project</b>	Weld County, CO NAD 83		
<b>Map System:</b>	US State Plane 1983	<b>System Datum:</b>	Mean Sea Level
<b>Geo Datum:</b>	North American Datum 1983		
<b>Map Zone:</b>	Colorado Northern Zone		

Site		SRC Fagerberg 13-12 Pad, SECTION 12 T6N R66W			
Site Position:		Northing:	1,425,367.83 usft	Latitude:	40.4985110
From:	Lat/Long	Easting:	3,212,990.12 usft	Longitude:	-104.7341300
Position Uncertainty:	3.28 ft	Slot Radius:	13.200 in	Grid Convergence:	0.49 °

Well	Fagerberg 36C-7-M, 1091 FSL 235 FWL					
Well Position	+N/-S	20.03 ft	Northing:	1,425,387.87 usft	Latitude:	40.4985660
	+E/-W	0.28 ft	Easting:	3,212,990.23 usft	Longitude:	-104.7341290
Position Uncertainty		3.28 ft	Wellhead Elevation:	0.00 ft	Ground Level:	4,800.00 ft

<b>Wellbore</b>	OH				
<b>Magnetics</b>	<b>Model Name</b>	<b>Sample Date</b>	<b>Declination (°)</b>	<b>Dip Angle (°)</b>	<b>Field Strength (nT)</b>
	BGGM2015	2/17/2016	8.49	67.03	52,600

<b>Design</b>	Plan #2			
<b>Audit Notes:</b>				
<b>Version:</b>	<b>Phase:</b>	PLAN	<b>Tie On Depth:</b>	0.00
<b>Vertical Section:</b>	<b>Depth From (TVD) (ft)</b>	<b>+N/-S (ft)</b>	<b>+E/-W (ft)</b>	<b>Direction (°)</b>
	0.00	0.00	0.00	97.62

<b>Plan Sections</b>										
Measured Depth (ft)	Inclination (°)	Azimuth (°)	Vertical Depth (ft)	+N/-S (ft)	+E/-W (ft)	Dogleg Rate (°/100ft)	Build Rate (°/100ft)	Turn Rate (°/100ft)	TFO (°)	Target
0.00	0.00	0.00	0.00	0.00	0.00	0.00	0.00	0.00	0.00	
300.00	0.00	0.00	300.00	0.00	0.00	0.00	0.00	0.00	0.00	
901.76	12.04	189.72	897.35	-62.07	-10.63	2.00	2.00	0.00	189.72	
5,753.85	12.04	189.72	5,642.78	-1,059.28	-181.37	0.00	0.00	0.00	0.00	
6,355.61	0.00	0.00	6,240.13	-1,121.35	-192.00	2.00	-2.00	0.00	180.00	
6,855.61	0.00	0.00	6,740.13	-1,121.35	-192.00	0.00	0.00	0.00	0.00	
7,673.80	90.00	90.00	7,261.00	-1,121.35	328.87	11.00	11.00	11.00	90.00	
15,722.14	90.00	90.00	7,261.00	-1,121.36	8,377.21	0.00	0.00	0.00	0.00	36C-7-M(1 FSL 1970)

<b>Database:</b>	Casper District	<b>Local Co-ordinate Reference:</b>	Well Fagerberg 36C-7-M
<b>Company:</b>	Synergy Resources Corp.	<b>TVD Reference:</b>	GL 4800 & KB 20 @ 4820.00ft (PD 462)
<b>Project:</b>	Weld County, CO NAD 83	<b>MD Reference:</b>	GL 4800 & KB 20 @ 4820.00ft (PD 462)
<b>Site:</b>	SRC Fagerberg 13-12 Pad	<b>North Reference:</b>	True
<b>Well:</b>	Fagerberg 36C-7-M	<b>Survey Calculation Method:</b>	Minimum Curvature
<b>Wellbore:</b>	OH		
<b>Design:</b>	Plan #2		

Planned Survey									
Measured Depth (ft)	Inclination (°)	Azimuth (°)	Vertical Depth (ft)	+N/-S (ft)	+E/-W (ft)	Vertical Section (ft)	Dogleg Rate (°/100ft)	Build Rate (°/100ft)	Turn Rate (°/100ft)
0.00	0.00	0.00	0.00	0.00	0.00	0.00	0.00	0.00	0.00
100.00	0.00	0.00	100.00	0.00	0.00	0.00	0.00	0.00	0.00
200.00	0.00	0.00	200.00	0.00	0.00	0.00	0.00	0.00	0.00
300.00	0.00	0.00	300.00	0.00	0.00	0.00	0.00	0.00	0.00
<b>Start Build 2.00</b>									
400.00	2.00	189.72	399.98	-1.72	-0.29	-0.06	2.00	2.00	0.00
500.00	4.00	189.72	499.84	-6.88	-1.18	-0.25	2.00	2.00	0.00
600.00	6.00	189.72	599.45	-15.47	-2.65	-0.57	2.00	2.00	0.00
700.00	8.00	189.72	698.70	-27.48	-4.71	-1.02	2.00	2.00	0.00
800.00	10.00	189.72	797.47	-42.90	-7.35	-1.59	2.00	2.00	0.00
900.00	12.00	189.72	895.62	-61.70	-10.57	-2.29	2.00	2.00	0.00
901.76	12.04	189.72	897.35	-62.07	-10.63	-2.30	2.00	2.00	0.00
<b>Start 4852.08 hold at 901.76 MD</b>									
1,000.00	12.04	189.72	993.43	-82.26	-14.08	-3.05	0.00	0.00	0.00
1,100.00	12.04	189.72	1,091.23	-102.81	-17.60	-3.81	0.00	0.00	0.00
1,200.00	12.04	189.72	1,189.03	-123.36	-21.12	-4.57	0.00	0.00	0.00
1,300.00	12.04	189.72	1,286.83	-143.91	-24.64	-5.33	0.00	0.00	0.00
1,400.00	12.04	189.72	1,384.63	-164.47	-28.16	-6.09	0.00	0.00	0.00
1,500.00	12.04	189.72	1,482.43	-185.02	-31.68	-6.85	0.00	0.00	0.00
1,600.00	12.04	189.72	1,580.24	-205.57	-35.20	-7.61	0.00	0.00	0.00
1,700.00	12.04	189.72	1,678.04	-226.12	-38.72	-8.37	0.00	0.00	0.00
1,722.45	12.04	189.72	1,700.00	-230.74	-39.51	-8.54	0.00	0.00	0.00
<b>9 5/8"</b>									
1,800.00	12.04	189.72	1,775.84	-246.68	-42.24	-9.14	0.00	0.00	0.00
1,900.00	12.04	189.72	1,873.64	-267.23	-45.76	-9.90	0.00	0.00	0.00
2,000.00	12.04	189.72	1,971.44	-287.78	-49.27	-10.66	0.00	0.00	0.00
2,100.00	12.04	189.72	2,069.25	-308.33	-52.79	-11.42	0.00	0.00	0.00
2,200.00	12.04	189.72	2,167.05	-328.88	-56.31	-12.18	0.00	0.00	0.00
2,300.00	12.04	189.72	2,264.85	-349.44	-59.83	-12.94	0.00	0.00	0.00
2,400.00	12.04	189.72	2,362.65	-369.99	-63.35	-13.70	0.00	0.00	0.00
2,500.00	12.04	189.72	2,460.45	-390.54	-66.87	-14.46	0.00	0.00	0.00
2,600.00	12.04	189.72	2,558.26	-411.09	-70.39	-15.22	0.00	0.00	0.00
2,700.00	12.04	189.72	2,656.06	-431.65	-73.91	-15.99	0.00	0.00	0.00
2,800.00	12.04	189.72	2,753.86	-452.20	-77.43	-16.75	0.00	0.00	0.00
2,900.00	12.04	189.72	2,851.66	-472.75	-80.95	-17.51	0.00	0.00	0.00
3,000.00	12.04	189.72	2,949.46	-493.30	-84.46	-18.27	0.00	0.00	0.00
3,100.00	12.04	189.72	3,047.27	-513.86	-87.98	-19.03	0.00	0.00	0.00
3,200.00	12.04	189.72	3,145.07	-534.41	-91.50	-19.79	0.00	0.00	0.00
3,300.00	12.04	189.72	3,242.87	-554.96	-95.02	-20.55	0.00	0.00	0.00
3,400.00	12.04	189.72	3,340.67	-575.51	-98.54	-21.31	0.00	0.00	0.00
3,500.00	12.04	189.72	3,438.47	-596.06	-102.06	-22.07	0.00	0.00	0.00
3,600.00	12.04	189.72	3,536.28	-616.62	-105.58	-22.84	0.00	0.00	0.00
3,700.00	12.04	189.72	3,634.08	-637.17	-109.10	-23.60	0.00	0.00	0.00
3,800.00	12.04	189.72	3,731.88	-657.72	-112.62	-24.36	0.00	0.00	0.00
3,900.00	12.04	189.72	3,829.68	-678.27	-116.14	-25.12	0.00	0.00	0.00
4,000.00	12.04	189.72	3,927.48	-698.83	-119.65	-25.88	0.00	0.00	0.00
4,100.00	12.04	189.72	4,025.29	-719.38	-123.17	-26.64	0.00	0.00	0.00
4,200.00	12.04	189.72	4,123.09	-739.93	-126.69	-27.40	0.00	0.00	0.00
4,300.00	12.04	189.72	4,220.89	-760.48	-130.21	-28.16	0.00	0.00	0.00
4,400.00	12.04	189.72	4,318.69	-781.04	-133.73	-28.92	0.00	0.00	0.00
4,500.00	12.04	189.72	4,416.49	-801.59	-137.25	-29.69	0.00	0.00	0.00
4,600.00	12.04	189.72	4,514.29	-822.14	-140.77	-30.45	0.00	0.00	0.00
4,700.00	12.04	189.72	4,612.10	-842.69	-144.29	-31.21	0.00	0.00	0.00

<b>Database:</b>	Casper District	<b>Local Co-ordinate Reference:</b>	Well Fagerberg 36C-7-M
<b>Company:</b>	Synergy Resources Corp.	<b>TVD Reference:</b>	GL 4800 & KB 20 @ 4820.00ft (PD 462)
<b>Project:</b>	Weld County, CO NAD 83	<b>MD Reference:</b>	GL 4800 & KB 20 @ 4820.00ft (PD 462)
<b>Site:</b>	SRC Fagerberg 13-12 Pad	<b>North Reference:</b>	True
<b>Well:</b>	Fagerberg 36C-7-M	<b>Survey Calculation Method:</b>	Minimum Curvature
<b>Wellbore:</b>	OH		
<b>Design:</b>	Plan #2		

Planned Survey									
Measured Depth (ft)	Inclination (°)	Azimuth (°)	Vertical Depth (ft)	+N/-S (ft)	+E/-W (ft)	Vertical Section (ft)	Dogleg Rate (°/100ft)	Build Rate (°/100ft)	Turn Rate (°/100ft)
4,800.00	12.04	189.72	4,709.90	-863.25	-147.81	-31.97	0.00	0.00	0.00
4,900.00	12.04	189.72	4,807.70	-883.80	-151.33	-32.73	0.00	0.00	0.00
5,000.00	12.04	189.72	4,905.50	-904.35	-154.84	-33.49	0.00	0.00	0.00
5,100.00	12.04	189.72	5,003.30	-924.90	-158.36	-34.25	0.00	0.00	0.00
5,200.00	12.04	189.72	5,101.11	-945.45	-161.88	-35.01	0.00	0.00	0.00
5,300.00	12.04	189.72	5,198.91	-966.01	-165.40	-35.77	0.00	0.00	0.00
5,400.00	12.04	189.72	5,296.71	-986.56	-168.92	-36.54	0.00	0.00	0.00
5,500.00	12.04	189.72	5,394.51	-1,007.11	-172.44	-37.30	0.00	0.00	0.00
5,600.00	12.04	189.72	5,492.31	-1,027.66	-175.96	-38.06	0.00	0.00	0.00
5,700.00	12.04	189.72	5,590.12	-1,048.22	-179.48	-38.82	0.00	0.00	0.00
5,753.85	12.04	189.72	5,642.78	-1,059.28	-181.37	-39.23	0.00	0.00	0.00
<b>Start Drop -2.00</b>									
5,800.00	11.11	189.72	5,687.99	-1,068.41	-182.94	-39.57	2.00	-2.00	0.00
5,900.00	9.11	189.72	5,786.44	-1,085.71	-185.90	-40.21	2.00	-2.00	0.00
6,000.00	7.11	189.72	5,885.43	-1,099.62	-188.28	-40.72	2.00	-2.00	0.00
6,100.00	5.11	189.72	5,984.86	-1,110.12	-190.08	-41.11	2.00	-2.00	0.00
6,200.00	3.11	189.72	6,084.59	-1,117.19	-191.29	-41.37	2.00	-2.00	0.00
6,300.00	1.11	189.72	6,184.52	-1,120.82	-191.91	-41.51	2.00	-2.00	0.00
6,355.61	0.00	0.00	6,240.13	-1,121.35	-192.00	-41.53	2.00	-2.00	0.00
<b>Start 500.00 hold at 6355.61 MD</b>									
6,400.00	0.00	0.00	6,284.52	-1,121.35	-192.00	-41.53	0.00	0.00	0.00
6,500.00	0.00	0.00	6,384.52	-1,121.35	-192.00	-41.53	0.00	0.00	0.00
6,600.00	0.00	0.00	6,484.52	-1,121.35	-192.00	-41.53	0.00	0.00	0.00
6,700.00	0.00	0.00	6,584.52	-1,121.35	-192.00	-41.53	0.00	0.00	0.00
6,800.00	0.00	0.00	6,684.52	-1,121.35	-192.00	-41.53	0.00	0.00	0.00
6,855.61	0.00	0.00	6,740.13	-1,121.35	-192.00	-41.53	0.00	0.00	0.00
<b>Start DLS 11.00 TFO 90.00</b>									
6,900.00	4.88	90.00	6,784.46	-1,121.35	-190.11	-39.65	11.00	11.00	0.00
7,000.00	15.88	90.00	6,882.67	-1,121.35	-172.12	-21.82	11.00	11.00	0.00
7,100.00	26.88	90.00	6,975.65	-1,121.35	-135.71	14.26	11.00	11.00	0.00
7,200.00	37.88	90.00	7,059.97	-1,121.35	-82.24	67.27	11.00	11.00	0.00
7,300.00	48.88	90.00	7,132.53	-1,121.35	-13.66	135.24	11.00	11.00	0.00
7,400.00	59.88	90.00	7,190.68	-1,121.35	67.51	215.69	11.00	11.00	0.00
7,500.00	70.88	90.00	7,232.27	-1,121.35	158.28	305.66	11.00	11.00	0.00
7,600.00	81.88	90.00	7,255.78	-1,121.35	255.32	401.84	11.00	11.00	0.00
7,673.80	90.00	90.00	7,261.00	-1,121.35	328.87	474.74	11.00	11.00	0.00
<b>Start 8048.34 hold at 7673.80 MD</b>									
7,700.00	90.00	90.00	7,261.00	-1,121.35	355.08	500.71	0.00	0.00	0.00
7,800.00	90.00	90.00	7,261.00	-1,121.35	455.08	599.83	0.00	0.00	0.00
7,900.00	90.00	90.00	7,261.00	-1,121.35	555.08	698.94	0.00	0.00	0.00
8,000.00	90.00	90.00	7,261.00	-1,121.35	655.08	798.06	0.00	0.00	0.00
8,100.00	90.00	90.00	7,261.00	-1,121.35	755.08	897.18	0.00	0.00	0.00
8,200.00	90.00	90.00	7,261.00	-1,121.35	855.08	996.29	0.00	0.00	0.00
8,300.00	90.00	90.00	7,261.00	-1,121.35	955.08	1,095.41	0.00	0.00	0.00
8,400.00	90.00	90.00	7,261.00	-1,121.35	1,055.08	1,194.52	0.00	0.00	0.00
8,500.00	90.00	90.00	7,261.00	-1,121.35	1,155.08	1,293.64	0.00	0.00	0.00
8,600.00	90.00	90.00	7,261.00	-1,121.35	1,255.08	1,392.76	0.00	0.00	0.00
8,700.00	90.00	90.00	7,261.00	-1,121.35	1,355.08	1,491.87	0.00	0.00	0.00
8,800.00	90.00	90.00	7,261.00	-1,121.35	1,455.08	1,590.99	0.00	0.00	0.00
8,900.00	90.00	90.00	7,261.00	-1,121.35	1,555.08	1,690.10	0.00	0.00	0.00
9,000.00	90.00	90.00	7,261.00	-1,121.35	1,655.08	1,789.22	0.00	0.00	0.00
9,100.00	90.00	90.00	7,261.00	-1,121.35	1,755.08	1,888.34	0.00	0.00	0.00
9,200.00	90.00	90.00	7,261.00	-1,121.35	1,855.08	1,987.45	0.00	0.00	0.00
9,300.00	90.00	90.00	7,261.00	-1,121.35	1,955.08	2,086.57	0.00	0.00	0.00

<b>Database:</b>	Casper District	<b>Local Co-ordinate Reference:</b>	Well Fagerberg 36C-7-M
<b>Company:</b>	Synergy Resources Corp.	<b>TVD Reference:</b>	GL 4800 & KB 20 @ 4820.00ft (PD 462)
<b>Project:</b>	Weld County, CO NAD 83	<b>MD Reference:</b>	GL 4800 & KB 20 @ 4820.00ft (PD 462)
<b>Site:</b>	SRC Fagerberg 13-12 Pad	<b>North Reference:</b>	True
<b>Well:</b>	Fagerberg 36C-7-M	<b>Survey Calculation Method:</b>	Minimum Curvature
<b>Wellbore:</b>	OH		
<b>Design:</b>	Plan #2		

Planned Survey									
Measured Depth (ft)	Inclination (°)	Azimuth (°)	Vertical Depth (ft)	+N/-S (ft)	+E/-W (ft)	Vertical Section (ft)	Dogleg Rate (°/100ft)	Build Rate (°/100ft)	Turn Rate (°/100ft)
9,400.00	90.00	90.00	7,261.00	-1,121.35	2,055.08	2,185.68	0.00	0.00	0.00
9,500.00	90.00	90.00	7,261.00	-1,121.35	2,155.08	2,284.80	0.00	0.00	0.00
9,600.00	90.00	90.00	7,261.00	-1,121.35	2,255.08	2,383.92	0.00	0.00	0.00
9,700.00	90.00	90.00	7,261.00	-1,121.35	2,355.08	2,483.03	0.00	0.00	0.00
9,800.00	90.00	90.00	7,261.00	-1,121.35	2,455.08	2,582.15	0.00	0.00	0.00
9,900.00	90.00	90.00	7,261.00	-1,121.35	2,555.08	2,681.26	0.00	0.00	0.00
10,000.00	90.00	90.00	7,261.00	-1,121.35	2,655.08	2,780.38	0.00	0.00	0.00
10,100.00	90.00	90.00	7,261.00	-1,121.35	2,755.08	2,879.50	0.00	0.00	0.00
10,200.00	90.00	90.00	7,261.00	-1,121.35	2,855.08	2,978.61	0.00	0.00	0.00
10,300.00	90.00	90.00	7,261.00	-1,121.36	2,955.08	3,077.73	0.00	0.00	0.00
10,400.00	90.00	90.00	7,261.00	-1,121.36	3,055.08	3,176.84	0.00	0.00	0.00
10,500.00	90.00	90.00	7,261.00	-1,121.36	3,155.08	3,275.96	0.00	0.00	0.00
10,600.00	90.00	90.00	7,261.00	-1,121.36	3,255.08	3,375.08	0.00	0.00	0.00
10,700.00	90.00	90.00	7,261.00	-1,121.36	3,355.08	3,474.19	0.00	0.00	0.00
10,800.00	90.00	90.00	7,261.00	-1,121.36	3,455.08	3,573.31	0.00	0.00	0.00
10,900.00	90.00	90.00	7,261.00	-1,121.36	3,555.08	3,672.42	0.00	0.00	0.00
11,000.00	90.00	90.00	7,261.00	-1,121.36	3,655.08	3,771.54	0.00	0.00	0.00
11,100.00	90.00	90.00	7,261.00	-1,121.36	3,755.08	3,870.66	0.00	0.00	0.00
11,200.00	90.00	90.00	7,261.00	-1,121.36	3,855.08	3,969.77	0.00	0.00	0.00
11,300.00	90.00	90.00	7,261.00	-1,121.36	3,955.08	4,068.89	0.00	0.00	0.00
11,400.00	90.00	90.00	7,261.00	-1,121.36	4,055.08	4,168.00	0.00	0.00	0.00
11,500.00	90.00	90.00	7,261.00	-1,121.36	4,155.08	4,267.12	0.00	0.00	0.00
11,600.00	90.00	90.00	7,261.00	-1,121.36	4,255.08	4,366.24	0.00	0.00	0.00
11,700.00	90.00	90.00	7,261.00	-1,121.36	4,355.08	4,465.35	0.00	0.00	0.00
11,800.00	90.00	90.00	7,261.00	-1,121.36	4,455.08	4,564.47	0.00	0.00	0.00
11,900.00	90.00	90.00	7,261.00	-1,121.36	4,555.08	4,663.58	0.00	0.00	0.00
12,000.00	90.00	90.00	7,261.00	-1,121.36	4,655.08	4,762.70	0.00	0.00	0.00
12,100.00	90.00	90.00	7,261.00	-1,121.36	4,755.08	4,861.82	0.00	0.00	0.00
12,200.00	90.00	90.00	7,261.00	-1,121.36	4,855.08	4,960.93	0.00	0.00	0.00
12,300.00	90.00	90.00	7,261.00	-1,121.36	4,955.08	5,060.05	0.00	0.00	0.00
12,400.00	90.00	90.00	7,261.00	-1,121.36	5,055.08	5,159.16	0.00	0.00	0.00
12,500.00	90.00	90.00	7,261.00	-1,121.36	5,155.08	5,258.28	0.00	0.00	0.00
12,600.00	90.00	90.00	7,261.00	-1,121.36	5,255.08	5,357.40	0.00	0.00	0.00
12,700.00	90.00	90.00	7,261.00	-1,121.36	5,355.08	5,456.51	0.00	0.00	0.00
12,800.00	90.00	90.00	7,261.00	-1,121.36	5,455.08	5,555.63	0.00	0.00	0.00
12,900.00	90.00	90.00	7,261.00	-1,121.36	5,555.08	5,654.74	0.00	0.00	0.00
13,000.00	90.00	90.00	7,261.00	-1,121.36	5,655.08	5,753.86	0.00	0.00	0.00
13,100.00	90.00	90.00	7,261.00	-1,121.36	5,755.08	5,852.98	0.00	0.00	0.00
13,200.00	90.00	90.00	7,261.00	-1,121.36	5,855.08	5,952.09	0.00	0.00	0.00
13,300.00	90.00	90.00	7,261.00	-1,121.36	5,955.08	6,051.21	0.00	0.00	0.00
13,400.00	90.00	90.00	7,261.00	-1,121.36	6,055.08	6,150.32	0.00	0.00	0.00
13,500.00	90.00	90.00	7,261.00	-1,121.36	6,155.08	6,249.44	0.00	0.00	0.00
13,600.00	90.00	90.00	7,261.00	-1,121.36	6,255.08	6,348.55	0.00	0.00	0.00
13,700.00	90.00	90.00	7,261.00	-1,121.36	6,355.08	6,447.67	0.00	0.00	0.00
13,800.00	90.00	90.00	7,261.00	-1,121.36	6,455.08	6,546.79	0.00	0.00	0.00
13,900.00	90.00	90.00	7,261.00	-1,121.36	6,555.08	6,645.90	0.00	0.00	0.00
14,000.00	90.00	90.00	7,261.00	-1,121.36	6,655.08	6,745.02	0.00	0.00	0.00
14,100.00	90.00	90.00	7,261.00	-1,121.36	6,755.08	6,844.13	0.00	0.00	0.00
14,200.00	90.00	90.00	7,261.00	-1,121.36	6,855.08	6,943.25	0.00	0.00	0.00
14,300.00	90.00	90.00	7,261.00	-1,121.36	6,955.08	7,042.37	0.00	0.00	0.00
14,400.00	90.00	90.00	7,261.00	-1,121.36	7,055.08	7,141.48	0.00	0.00	0.00
14,500.00	90.00	90.00	7,261.00	-1,121.36	7,155.08	7,240.60	0.00	0.00	0.00
14,600.00	90.00	90.00	7,261.00	-1,121.36	7,255.08	7,339.71	0.00	0.00	0.00
14,700.00	90.00	90.00	7,261.00	-1,121.36	7,355.08	7,438.83	0.00	0.00	0.00



<b>Database:</b>	Casper District	<b>Local Co-ordinate Reference:</b>	Well Fagerberg 36C-7-M
<b>Company:</b>	Synergy Resources Corp.	<b>TVD Reference:</b>	GL 4800 & KB 20 @ 4820.00ft (PD 462)
<b>Project:</b>	Weld County, CO NAD 83	<b>MD Reference:</b>	GL 4800 & KB 20 @ 4820.00ft (PD 462)
<b>Site:</b>	SRC Fagerberg 13-12 Pad	<b>North Reference:</b>	True
<b>Well:</b>	Fagerberg 36C-7-M	<b>Survey Calculation Method:</b>	Minimum Curvature
<b>Wellbore:</b>	OH		
<b>Design:</b>	Plan #2		

Planned Survey									
Measured Depth (ft)	Inclination (°)	Azimuth (°)	Vertical Depth (ft)	+N/-S (ft)	+E/-W (ft)	Vertical Section (ft)	Dogleg Rate (°/100ft)	Build Rate (°/100ft)	Turn Rate (°/100ft)
14,800.00	90.00	90.00	7,261.00	-1,121.36	7,455.08	7,537.95	0.00	0.00	0.00
14,900.00	90.00	90.00	7,261.00	-1,121.36	7,555.08	7,637.06	0.00	0.00	0.00
15,000.00	90.00	90.00	7,261.00	-1,121.36	7,655.08	7,736.18	0.00	0.00	0.00
15,100.00	90.00	90.00	7,261.00	-1,121.36	7,755.08	7,835.29	0.00	0.00	0.00
15,200.00	90.00	90.00	7,261.00	-1,121.36	7,855.08	7,934.41	0.00	0.00	0.00
15,300.00	90.00	90.00	7,261.00	-1,121.36	7,955.08	8,033.53	0.00	0.00	0.00
15,400.00	90.00	90.00	7,261.00	-1,121.36	8,055.08	8,132.64	0.00	0.00	0.00
15,500.00	90.00	90.00	7,261.00	-1,121.36	8,155.08	8,231.76	0.00	0.00	0.00
15,600.00	90.00	90.00	7,261.00	-1,121.36	8,255.08	8,330.87	0.00	0.00	0.00
15,700.00	90.00	90.00	7,261.00	-1,121.36	8,355.08	8,429.99	0.00	0.00	0.00
15,722.14	90.00	90.00	7,261.00	-1,121.36	8,377.21	8,451.93	0.00	0.00	0.00
TD at 15722.14 - 36C-7-M(1 FSL 1970 FEL) PBHL									

Design Targets									
Target Name	Dip Angle (°)	Dip Dir. (°)	TVD (ft)	+N/-S (ft)	+E/-W (ft)	Northing (usft)	Easting (usft)	Latitude	Longitude
- hit/miss target									
- Shape									
36C-7-M(1 FSL 1970 FE	0.00	0.00	7,261.00	-1,121.36	8,377.21	1,424,338.90	3,221,376.80	40.4954840	-104.7040080
- plan hits target center									
- Point									

Casing Points					
Measured Depth (ft)	Vertical Depth (ft)	Name		Casing Diameter (in)	Hole Diameter (in)
1,722.45	1,700.00	9 5/8"		9.625	13.500

Plan Annotations					
Measured Depth (ft)	Vertical Depth (ft)	Local Coordinates		Comment	
		+N/-S (ft)	+E/-W (ft)		
300.00	300.00	0.00	0.00	Start Build 2.00	
901.76	897.35	-62.07	-10.63	Start 4852.08 hold at 901.76 MD	
5,753.85	5,642.78	-1,059.28	-181.37	Start Drop -2.00	
6,355.61	6,240.13	-1,121.35	-192.00	Start 500.00 hold at 6355.61 MD	
6,855.61	6,740.13	-1,121.35	-192.00	Start DLS 11.00 TFO 90.00	
7,673.80	7,261.00	-1,121.35	328.87	Start 8048.34 hold at 7673.80 MD	
15,722.14	7,261.00	-1,121.36	8,377.21	TD at 15722.14	