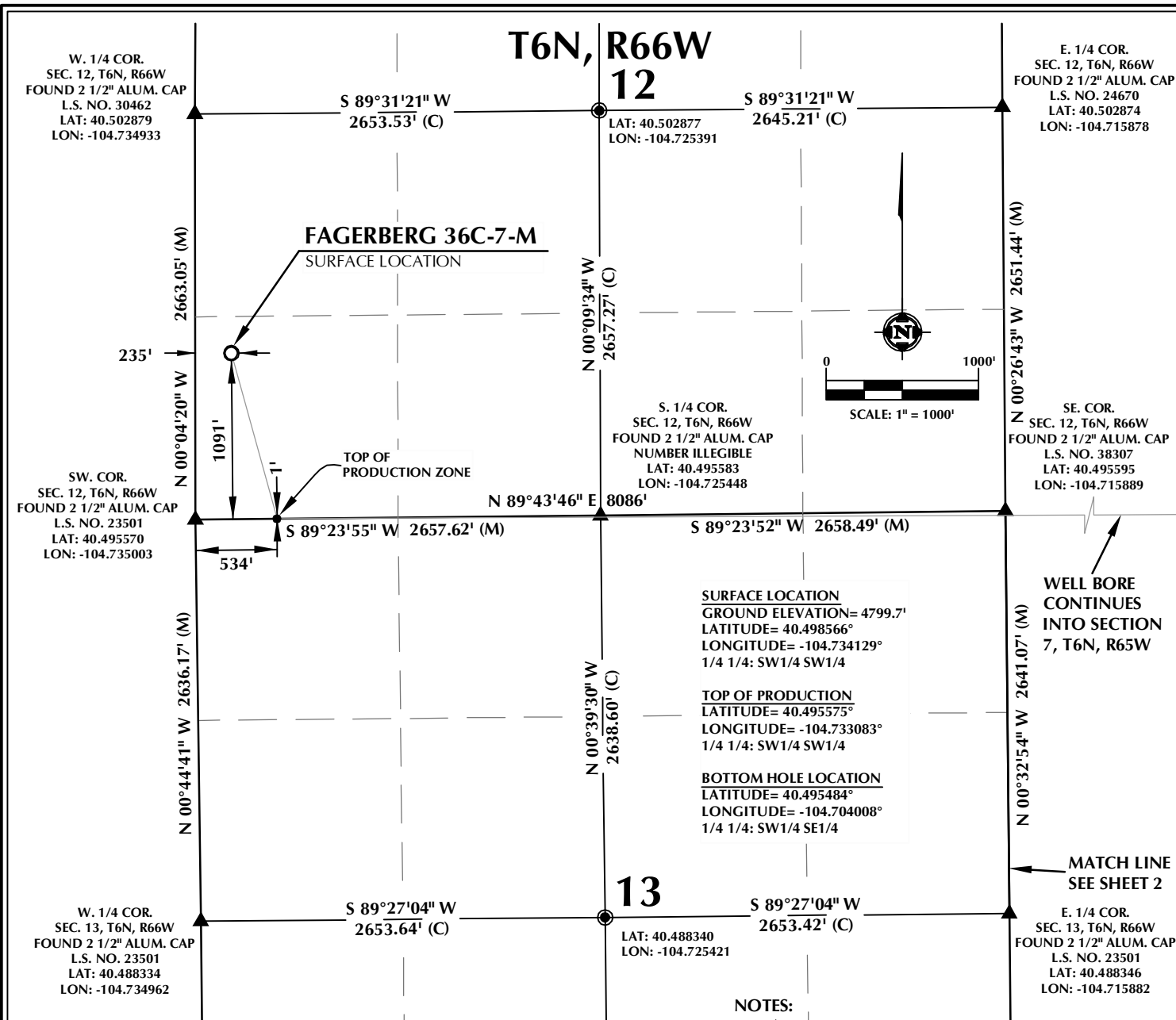


K:\SYNERGY RESOURCES\2016\_21\_FAGERBERG SEC. 12\PLAT\SYNERGY FAGERBERG 33-12 PLAT.dwg, 2/22/2016 1:57:09 PM, lha



#### CERTIFICATE OF SURVEYOR:

THIS IS TO CERTIFY THAT THE ABOVE PLAT WAS PREPARED FROM FIELD NOTES OF ACTUAL SURVEY MADE BY ME OR UNDER MY SUPERVISION AND THAT THE SAME ARE TRUE AND CORRECT TO THE BEST OF MY KNOWLEDGE AND BELIEF. THIS CERTIFICATE DOES NOT REPRESENT A LAND SURVEY PLAT OR IMPROVEMENT SURVEY PLAT AS DEFINED BY C.R.S. 38-51-102 AND CANNOT BE RELIED UPON TO DETERMINE OWNERSHIP.

JOHN R. SLAUGH  
PROFESSIONAL LAND SURVEYOR  
COLORADO REGISTRATION NUMBER 38230  
2/18/16

NOTICE:  
ACCORDING TO COLORADO STATE LAW YOU MUST COMMENCE ANY LEGAL ACTION BASED UPON ANY DEFECT IN THIS SURVEY WITHIN THREE YEARS AFTER YOU FIRST DISCOVER SUCH DEFECT. IN NO EVENT MAY ANY ACTION BASED UPON ANY DEFECT IN THIS SURVEY BE COMMENCED MORE THAN TEN YEARS FROM THE DATE ON THE CERTIFICATION SHOWN HEREON.

#### WELL DISTANCES:

BUILDING: ±1015' SE  
BUILDING UNIT: ±1041' SE  
HIGH OCCUPANCY BUILDING UNIT: 5280'+  
DESIGNATED OUTSIDE ACTIVITY AREA: 5280'+  
PUBLIC ROAD: ±205' W  
PROPERTY LINE: ±235' W  
ABOVE GROUND UTILITY: ±266' W  
RAILROAD: 5280'+

#### NOTES:

- ▲ INDICATES FOUND SECTION CORNER
- INDICATES CALCULATED CORNER
- DRAWING LATITUDE AND LONGITUDE COORDINATES ARE NAD 83 (2011)(EPOCH:2010)
- ELEVATION BASED ON NAVD88 (GEOID12B)
- BASIS OF BEARING DERIVED FROM COLORADO COORDINATE SYSTEM OF 1983 NORTH ZONE.
- ALL MEASURED DISTANCES ARE GRID. COMBINED SCALE FACTOR: .99973936
- OPERATOR: ROB WILSON / PDOP = 1.4
- SEE ADDENDUM TO WELL LOCATION CERTIFICATE FOR EXISTING IMPROVEMENTS WITHIN 500' OF THE WELL PAD.
- WELL FOOTAGES ARE MEASURED AT RIGHT ANGLES TO THE SECTION LINES.
- THE BOTTOM OF HOLE BEARS N89°43'46"E, 8086' FROM THE TOP OF PRODUCTION ZONE.

#### WELL PAD - FAGERBERG 33-12

FAGERBERG 36C-7-M  
WELL LOCATION CERTIFICATE  
1091' FSL & 235' FWL SWSW (SURFACE)  
1' FSL & 534' FWL SWSW (TOP OF PRODUCTION)  
LOCATED IN SECTION 12  
T6N, R66W, 6TH P.M.  
1' FSL & 1970' FEL SWSE (BOTTOM)  
LOCATED IN SECTION 7  
T6N, R65W, 6TH P.M.  
WELD COUNTY, COLORADO



1625 Broadway, Suite 300  
Denver, Colorado 80202



#### CONSULTING, LLC

SHERIDAN OFFICE  
1095 Saberton Avenue  
Sheridan, Wyoming 82801  
Phone 307-674-0609

LOVELAND OFFICE  
1635 Foxtrail Drive, Suite 204  
Loveland, Colorado 80538  
Phone 970-776-4331

DRAFTED BY:	LMO	CHECKED BY:	JRS	SHEET NO:
DATE DRAFTED:	2/18/16	DATE SURVEYED:	2/16/16	1
REVISED:		FILE NAME:	16-21	1 OF 2

# T6N, R65W

LAT: 40.502761  
LON: -104.706397

7

E. 1/4 COR.  
SEC. 7, T6N, R65W  
FOUND 2 1/2" ALUM. CAP  
L.S. NO. 23501  
LAT: 40.502648  
LON: -104.696892

W. 1/4 COR.  
SEC. 7, T6N, R65W  
FOUND 2 1/2" ALUM. CAP  
L.S. NO. 24670  
LAT: 40.502874  
LON: -104.715878

MATCH LINE  
SEE SHEET 1

**SURFACE LOCATION**  
GROUND ELEVATION= 4799.7'  
LATITUDE= 40.498566°  
LONGITUDE= -104.734129°  
1/4 1/4: SW1/4 SW1/4

**TOP OF PRODUCTION**  
LATITUDE= 40.495575°  
LONGITUDE= -104.733083°  
1/4 1/4: SW1/4 SW1/4

**BOTTOM HOLE LOCATION**  
LATITUDE= 40.495484°  
LONGITUDE= -104.704008°  
1/4 1/4: SW1/4 SE1/4

SW. COR.  
SEC. 7, T6N, R65W  
FOUND 2 1/2" ALUM. CAP  
L.S. NO. 38307  
LAT: 40.495595  
LON: -104.715889

N 89°43'46" E 8086'

N 89°43'35" W 2635.07' (M)

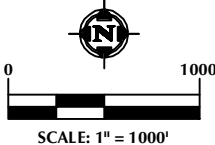
BOTTOM OF HOLE

1970'

S 89°57'10" W 2639.51' (M)

SE. COR.  
SEC. 7, T6N, R65W  
FOUND 2 1/2" ALUM. CAP  
L.S. NO. 23501  
LAT: 40.495437  
LON: -104.696925

S. 1/4 COR.  
SEC. 7, T6N, R65W  
FOUND 3" ALUM. CAP  
L.S. NO. 12374  
LAT: 40.495497  
LON: -104.706415



SCALE: 1" = 1000'

CENTER W. 1/16 COR.  
SEC. 18, T6N, R65W  
FOUND 3" ALUM. CAP  
L.S. NO. 30462  
LAT: 40.488309  
LON: -104.711122

E. 1/4 COR.  
SEC. 18, T6N, R65W  
FOUND 3" ALUM. CAP  
L.S. NO. 30462

W. 1/4 COR.  
SEC. 18, T6N, R65W  
FOUND 2 1/2" ALUM. CAP  
L.S. NO. 23501  
LAT: 40.488346  
LON: -104.715882

N 89°55'40" W 1324.11' (M)

N 89°55'11" W 1319.37' (C)

18

N 89°55'11" W 2643.60' (C)

E. 1/4 COR.  
SEC. 18, T6N, R65W  
FOUND 3" ALUM. CAP  
L.S. NO. 30462  
LAT: 40.488196  
LON: -104.696875

## CERTIFICATE OF SURVEYOR:

THIS IS TO CERTIFY THAT THE ABOVE PLAT WAS PREPARED FROM FIELD NOTES OF ACTUAL SURVEY MADE BY ME OR UNDER MY SUPERVISION AND THAT THE SAME ARE TRUE AND CORRECT TO THE BEST OF MY KNOWLEDGE AND BELIEF. THIS CERTIFICATE DOES NOT REPRESENT A LAND SURVEY PLAT OR IMPROVEMENT SURVEY PLAT AS DEFINED BY C.R.S. 38-51-102 AND CANNOT BE RELIED UPON TO DETERMINE OWNERSHIP.

JOHN R. SLAUGH  
PROFESSIONAL LAND SURVEYOR  
COLORADO REGISTRATION NUMBER 38230

NOTICE:  
ACCORDING TO COLORADO STATE LAW YOU MUST COMMENCE ANY LEGAL ACTION BASED UPON ANY DEFECT IN THIS SURVEY WITHIN THREE YEARS AFTER YOU FIRST DISCOVER SUCH DEFECT. IN NO EVENT MAY ANY ACTION BASED UPON ANY DEFECT IN THIS SURVEY BE COMMENCED MORE THAN TEN YEARS FROM THE DATE ON THE CERTIFICATION SHOWN HEREON.

## WELL DISTANCES:

BUILDING: ±1015' SE  
BUILDING UNIT: ±1041' SE  
HIGH OCCUPANCY BUILDING UNIT: 5280'+  
DESIGNATED OUTSIDE ACTIVITY AREA: 5280'+  
PUBLIC ROAD: ±205' W  
PROPERTY LINE: ±235' W  
ABOVE GROUND UTILITY: ±266' W  
RAILROAD: 5280'+

## NOTES:

- ▲ INDICATES FOUND SECTION CORNER
- INDICATES CALCULATED CORNER
- DRAWING LATITUDE AND LONGITUDE COORDINATES ARE NAD 83 (2011)(EPOCH:2010)
- ELEVATION BASED ON NAVD88 (GEOID12B)
- BASIS OF BEARING DERIVED FROM COLORADO COORDINATE SYSTEM OF 1983 NORTH ZONE.
- ALL MEASURED DISTANCES ARE GRID.
- COMBINED SCALE FACTOR: .99973936
- OPERATOR: ROB WILSON / PDOP = 1.4
- SEE ADDENDUM TO WELL LOCATION CERTIFICATE FOR EXISTING IMPROVEMENTS WITHIN 500' OF THE WELL PAD.
- WELL FOOTAGES ARE MEASURED AT RIGHT ANGLES TO THE SECTION LINES.
- THE BOTTOM OF HOLE BEARS N89°43'46"E, 8086' FROM THE TOP OF PRODUCTION ZONE.

## WELL PAD - FAGERBERG 33-12

FAGERBERG 36C-7-M  
WELL LOCATION CERTIFICATE  
1091' FSL & 235' FWL SWSW (SURFACE)  
1' FSL & 534' FWL SWSW (TOP OF PRODUCTION)  
LOCATED IN SECTION 12  
T6N, R66W, 6TH P.M.  
1' FSL & 1970' FEL SWSE (BOTTOM)  
LOCATED IN SECTION 7  
T6N, R65W, 6TH P.M.  
WELD COUNTY, COLORADO



1625 Broadway, Suite 300  
Denver, Colorado 80202



## CONSULTING, LLC

SHERIDAN OFFICE  
1095 Saberton Avenue  
Sheridan, Wyoming 82801  
Phone 307-674-0609

LOVELAND OFFICE  
1635 Foxtrail Drive, Suite 204  
Loveland, Colorado 80538  
Phone 970-776-4331

DRAFTED BY:	LMO	CHECKED BY:	JRS	SHEET NO:
DATE DRAFTED:	2/18/16	DATE SURVEYED:	2/16/16	2
REVISED:		FILE NAME:	16-21	2 OF 2