



## PROJECT DETAILS: Weld County, CO NAD 83

Geodetic System: US State Plane 1983  
Datum: North American Datum 1983  
Ellipsoid: GRS 1980  
Zone: Colorado Northern Zone  
System Datum: Mean Sea Level  
Local North: True

Project: Weld County, CO NAD 83  
Site: SRC Fagerberg 13-12 Pad  
Well: Fagerberg 36N-7B-M  
Wellbore: OH  
Design: Plan #2



Azimuths to True North  
Magnetic North: 8.49°



Magnetic Field  
Strength: 52600.5nT  
Dip Angle: 67.03°  
Date: 2/17/2016  
Model: BGGM2015

## SECTION DETAILS

MD	Inc	Azi	TVD	+N/-S	+E/-W	Dleg	TFace	VSect
0.00	0.00	0.00	0.00	0.00	0.00	0.00	0.00	0.00
200.00	0.00	0.00	200.00	0.00	0.00	0.00	0.00	0.00
700.14	10.00	193.17	697.61	-42.40	-9.92	2.00	193.17	-5.75
4998.26	10.00	193.17	4930.39	-769.33	-180.08	0.00	0.00	-104.41
5498.41	0.00	0.00	5428.00	-811.73	-190.00	2.00	180.00	-110.17
6652.54	0.00	0.00	6582.13	-811.73	-190.00	0.00	0.00	-110.17
7470.72	90.00	90.00	7103.00	-811.73	330.87	11.00	90.00	408.23
15448.26	90.00	90.00	7103.00	-811.73	8308.40	0.00	0.00	8347.96

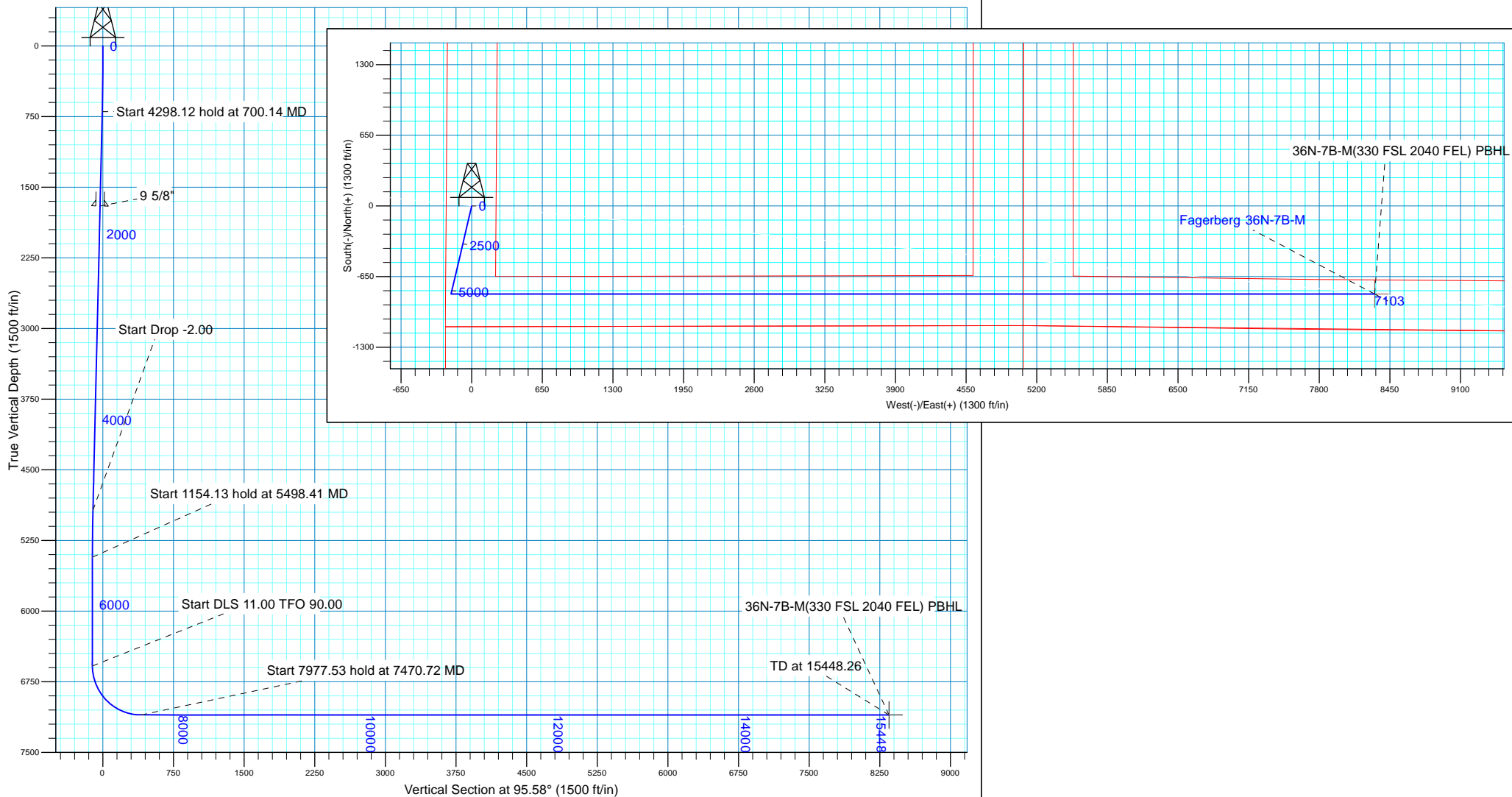
## WELL DETAILS: Fagerberg 36N-7B-M

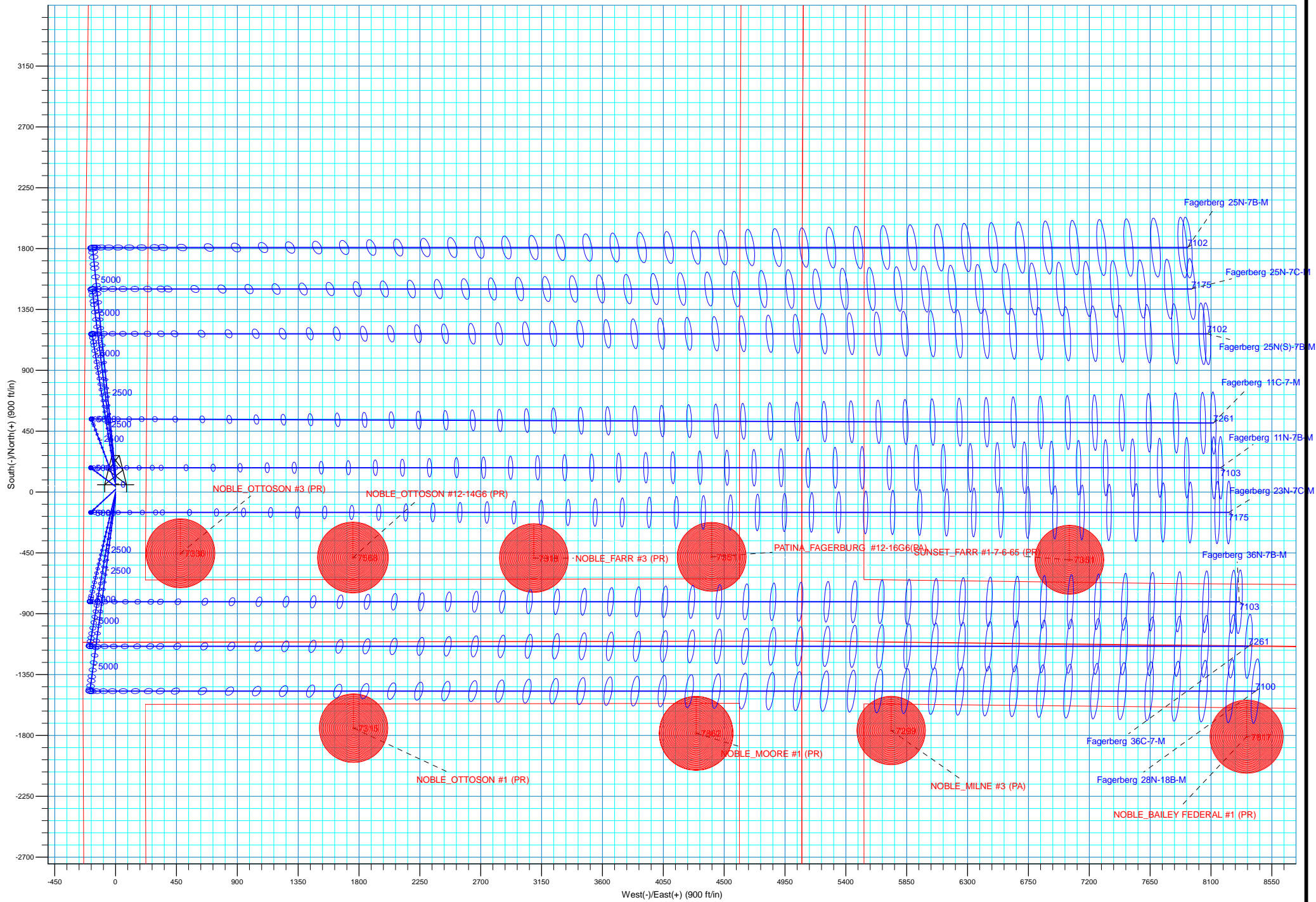
		GL 4800 & KB 20 @ 4820.00ft (PD 462)		4800.00	
+N/-S	+E/-W	Northing	Easting	Latitude	Longitude
0.00	0.00	1425407.90	3212990.06	40.4986210	-104.7341290

Plan: Plan #2 (Fagerberg 36N-7B-M/OH)

## CASING DETAILS

Created By:	rscott	Date:	12:25, February 23 2016	TVD	MD	Name	Size
				1700.00	1718.01	9 5/8"	9.625





Plan: Plan #2 (Fagerberg 36N-7B-M/OH)

Created By: rscott Date: 13:39, February 23 2016



## **Synergy Resources Corp.**

**Weld County, CO NAD 83  
SRC Fagerberg 13-12 Pad  
Fagerberg 36N-7B-M**

**OH**

**Plan: Plan #2**

## **Standard Planning Report**

**23 February, 2016**



<b>Database:</b>	Casper District	<b>Local Co-ordinate Reference:</b>	Well Fagerberg 36N-7B-M
<b>Company:</b>	Synergy Resources Corp.	<b>TVD Reference:</b>	GL 4800 & KB 20 @ 4820.00ft (PD 462)
<b>Project:</b>	Weld County, CO NAD 83	<b>MD Reference:</b>	GL 4800 & KB 20 @ 4820.00ft (PD 462)
<b>Site:</b>	SRC Fagerberg 13-12 Pad	<b>North Reference:</b>	True
<b>Well:</b>	Fagerberg 36N-7B-M	<b>Survey Calculation Method:</b>	Minimum Curvature
<b>Wellbore:</b>	OH		
<b>Design:</b>	Plan #2		

<b>Project</b>	Weld County, CO NAD 83		
<b>Map System:</b>	US State Plane 1983	<b>System Datum:</b>	Mean Sea Level
<b>Geo Datum:</b>	North American Datum 1983		
<b>Map Zone:</b>	Colorado Northern Zone		

Site		SRC Fagerberg 13-12 Pad, SECTION 12 T6N R66W			
Site Position:		Northing:	1,425,367.83 usft	Latitude:	40.4985110
From:	Lat/Long	Easting:	3,212,990.12 usft	Longitude:	-104.7341300
Position Uncertainty:	3.28 ft	Slot Radius:	13.200 in	Grid Convergence:	0.49 °

Well	Fagerberg 36N-7B-M, 1111 FSL 235 FWL					
Well Position	+N/-S	40.07 ft	Northing:	1,425,407.90 usft	Latitude:	40.4986210
	+E/-W	0.28 ft	Easting:	3,212,990.06 usft	Longitude:	-104.7341290
Position Uncertainty		3.28 ft	Wellhead Elevation:	0.00 ft	Ground Level:	4,800.00 ft

<b>Wellbore</b>	OH				
<b>Magnetics</b>	<b>Model Name</b>	<b>Sample Date</b>	<b>Declination (°)</b>	<b>Dip Angle (°)</b>	<b>Field Strength (nT)</b>
	BGGM2015	2/17/2016	8.49	67.03	52,601

<b>Design</b>	Plan #2			
<b>Audit Notes:</b>				
<b>Version:</b>	<b>Phase:</b>	PLAN	<b>Tie On Depth:</b>	0.00
<b>Vertical Section:</b>	<b>Depth From (TVD)</b>	<b>+N/-S</b>	<b>+E/-W</b>	<b>Direction</b>
	(ft)	(ft)	(ft)	(°)
	0.00	0.00	0.00	95.58

<b>Plan Sections</b>										
Measured Depth (ft)	Inclination (°)	Azimuth (°)	Vertical Depth (ft)	+N/-S (ft)	+E/-W (ft)	Dogleg Rate (°/100ft)	Build Rate (°/100ft)	Turn Rate (°/100ft)	TFO (°)	Target
0.00	0.00	0.00	0.00	0.00	0.00	0.00	0.00	0.00	0.00	
200.00	0.00	0.00	200.00	0.00	0.00	0.00	0.00	0.00	0.00	
700.14	10.00	193.17	697.61	-42.40	-9.92	2.00	2.00	0.00	193.17	
4,998.26	10.00	193.17	4,930.39	-769.33	-180.08	0.00	0.00	0.00	0.00	
5,498.41	0.00	0.00	5,428.00	-811.73	-190.00	2.00	-2.00	0.00	180.00	
6,652.54	0.00	0.00	6,582.13	-811.73	-190.00	0.00	0.00	0.00	0.00	
7,470.72	90.00	90.00	7,103.00	-811.73	330.87	11.00	11.00	11.00	90.00	
15,448.26	90.00	90.00	7,103.00	-811.73	8,308.41	0.00	0.00	0.00	0.00	36N-7B-M(330 FSL 21

<b>Database:</b>	Casper District	<b>Local Co-ordinate Reference:</b>	Well Fagerberg 36N-7B-M
<b>Company:</b>	Synergy Resources Corp.	<b>TVD Reference:</b>	GL 4800 & KB 20 @ 4820.00ft (PD 462)
<b>Project:</b>	Weld County, CO NAD 83	<b>MD Reference:</b>	GL 4800 & KB 20 @ 4820.00ft (PD 462)
<b>Site:</b>	SRC Fagerberg 13-12 Pad	<b>North Reference:</b>	True
<b>Well:</b>	Fagerberg 36N-7B-M	<b>Survey Calculation Method:</b>	Minimum Curvature
<b>Wellbore:</b>	OH		
<b>Design:</b>	Plan #2		

Planned Survey									
Measured Depth (ft)	Inclination (°)	Azimuth (°)	Vertical Depth (ft)	+N/-S (ft)	+E/-W (ft)	Vertical Section (ft)	Dogleg Rate (°/100ft)	Build Rate (°/100ft)	Turn Rate (°/100ft)
0.00	0.00	0.00	0.00	0.00	0.00	0.00	0.00	0.00	0.00
100.00	0.00	0.00	100.00	0.00	0.00	0.00	0.00	0.00	0.00
200.00	0.00	0.00	200.00	0.00	0.00	0.00	0.00	0.00	0.00
Start Build 2.00									
300.00	2.00	193.17	299.98	-1.70	-0.40	-0.23	2.00	2.00	0.00
400.00	4.00	193.17	399.84	-6.79	-1.59	-0.92	2.00	2.00	0.00
500.00	6.00	193.17	499.45	-15.28	-3.58	-2.07	2.00	2.00	0.00
600.00	8.00	193.17	598.70	-27.15	-6.35	-3.68	2.00	2.00	0.00
700.00	10.00	193.17	697.47	-42.38	-9.92	-5.75	2.00	2.00	0.00
700.14	10.00	193.17	697.61	-42.40	-9.92	-5.75	2.00	2.00	0.00
Start 4298.12 hold at 700.14 MD									
800.00	10.00	193.17	795.95	-59.29	-13.88	-8.05	0.00	0.00	0.00
900.00	10.00	193.17	894.43	-76.20	-17.84	-10.34	0.00	0.00	0.00
1,000.00	10.00	193.17	992.91	-93.12	-21.80	-12.64	0.00	0.00	0.00
1,100.00	10.00	193.17	1,091.38	-110.03	-25.75	-14.93	0.00	0.00	0.00
1,200.00	10.00	193.17	1,189.86	-126.94	-29.71	-17.23	0.00	0.00	0.00
1,300.00	10.00	193.17	1,288.34	-143.85	-33.67	-19.52	0.00	0.00	0.00
1,400.00	10.00	193.17	1,386.82	-160.77	-37.63	-21.82	0.00	0.00	0.00
1,500.00	10.00	193.17	1,485.30	-177.68	-41.59	-24.11	0.00	0.00	0.00
1,600.00	10.00	193.17	1,583.78	-194.59	-45.55	-26.41	0.00	0.00	0.00
1,700.00	10.00	193.17	1,682.26	-211.50	-49.51	-28.71	0.00	0.00	0.00
1,718.01	10.00	193.17	1,700.00	-214.55	-50.22	-29.12	0.00	0.00	0.00
9 5/8"									
1,800.00	10.00	193.17	1,780.74	-228.42	-53.46	-31.00	0.00	0.00	0.00
1,900.00	10.00	193.17	1,879.22	-245.33	-57.42	-33.30	0.00	0.00	0.00
2,000.00	10.00	193.17	1,977.70	-262.24	-61.38	-35.59	0.00	0.00	0.00
2,100.00	10.00	193.17	2,076.18	-279.15	-65.34	-37.89	0.00	0.00	0.00
2,200.00	10.00	193.17	2,174.66	-296.07	-69.30	-40.18	0.00	0.00	0.00
2,300.00	10.00	193.17	2,273.14	-312.98	-73.26	-42.48	0.00	0.00	0.00
2,400.00	10.00	193.17	2,371.62	-329.89	-77.22	-44.77	0.00	0.00	0.00
2,500.00	10.00	193.17	2,470.10	-346.81	-81.18	-47.07	0.00	0.00	0.00
2,600.00	10.00	193.17	2,568.58	-363.72	-85.13	-49.36	0.00	0.00	0.00
2,700.00	10.00	193.17	2,667.06	-380.63	-89.09	-51.66	0.00	0.00	0.00
2,800.00	10.00	193.17	2,765.54	-397.54	-93.05	-53.96	0.00	0.00	0.00
2,900.00	10.00	193.17	2,864.02	-414.46	-97.01	-56.25	0.00	0.00	0.00
3,000.00	10.00	193.17	2,962.50	-431.37	-100.97	-58.55	0.00	0.00	0.00
3,100.00	10.00	193.17	3,060.98	-448.28	-104.93	-60.84	0.00	0.00	0.00
3,200.00	10.00	193.17	3,159.46	-465.19	-108.89	-63.14	0.00	0.00	0.00
3,300.00	10.00	193.17	3,257.94	-482.11	-112.85	-65.43	0.00	0.00	0.00
3,400.00	10.00	193.17	3,356.42	-499.02	-116.80	-67.73	0.00	0.00	0.00
3,500.00	10.00	193.17	3,454.90	-515.93	-120.76	-70.02	0.00	0.00	0.00
3,600.00	10.00	193.17	3,553.38	-532.84	-124.72	-72.32	0.00	0.00	0.00
3,700.00	10.00	193.17	3,651.86	-549.76	-128.68	-74.61	0.00	0.00	0.00
3,800.00	10.00	193.17	3,750.34	-566.67	-132.64	-76.91	0.00	0.00	0.00
3,900.00	10.00	193.17	3,848.82	-583.58	-136.60	-79.21	0.00	0.00	0.00
4,000.00	10.00	193.17	3,947.30	-600.50	-140.56	-81.50	0.00	0.00	0.00
4,100.00	10.00	193.17	4,045.78	-617.41	-144.52	-83.80	0.00	0.00	0.00
4,200.00	10.00	193.17	4,144.26	-634.32	-148.47	-86.09	0.00	0.00	0.00
4,300.00	10.00	193.17	4,242.74	-651.23	-152.43	-88.39	0.00	0.00	0.00
4,400.00	10.00	193.17	4,341.22	-668.15	-156.39	-90.68	0.00	0.00	0.00
4,500.00	10.00	193.17	4,439.70	-685.06	-160.35	-92.98	0.00	0.00	0.00
4,600.00	10.00	193.17	4,538.18	-701.97	-164.31	-95.27	0.00	0.00	0.00
4,700.00	10.00	193.17	4,636.66	-718.88	-168.27	-97.57	0.00	0.00	0.00

<b>Database:</b>	Casper District	<b>Local Co-ordinate Reference:</b>	Well Fagerberg 36N-7B-M
<b>Company:</b>	Synergy Resources Corp.	<b>TVD Reference:</b>	GL 4800 & KB 20 @ 4820.00ft (PD 462)
<b>Project:</b>	Weld County, CO NAD 83	<b>MD Reference:</b>	GL 4800 & KB 20 @ 4820.00ft (PD 462)
<b>Site:</b>	SRC Fagerberg 13-12 Pad	<b>North Reference:</b>	True
<b>Well:</b>	Fagerberg 36N-7B-M	<b>Survey Calculation Method:</b>	Minimum Curvature
<b>Wellbore:</b>	OH		
<b>Design:</b>	Plan #2		

Planned Survey									
Measured Depth (ft)	Inclination (°)	Azimuth (°)	Vertical Depth (ft)	+N/-S (ft)	+E/-W (ft)	Vertical Section (ft)	Dogleg Rate (°/100ft)	Build Rate (°/100ft)	Turn Rate (°/100ft)
4,800.00	10.00	193.17	4,735.14	-735.80	-172.23	-99.86	0.00	0.00	0.00
4,900.00	10.00	193.17	4,833.62	-752.71	-176.19	-102.16	0.00	0.00	0.00
4,998.26	10.00	193.17	4,930.39	-769.33	-180.08	-104.41	0.00	0.00	0.00
<b>Start Drop -2.00</b>									
5,000.00	9.97	193.17	4,932.10	-769.62	-180.14	-104.45	2.00	-2.00	0.00
5,100.00	7.97	193.17	5,030.87	-784.80	-183.70	-106.51	2.00	-2.00	0.00
5,200.00	5.97	193.17	5,130.13	-796.61	-186.46	-108.12	2.00	-2.00	0.00
5,300.00	3.97	193.17	5,229.75	-805.04	-188.43	-109.26	2.00	-2.00	0.00
5,400.00	1.97	193.17	5,329.61	-810.08	-189.61	-109.95	2.00	-2.00	0.00
5,498.41	0.00	0.00	5,428.00	-811.73	-190.00	-110.17	2.00	-2.00	0.00
<b>Start 1154.13 hold at 5498.41 MD</b>									
5,500.00	0.00	0.00	5,429.59	-811.73	-190.00	-110.17	0.00	0.00	0.00
5,600.00	0.00	0.00	5,529.59	-811.73	-190.00	-110.17	0.00	0.00	0.00
5,700.00	0.00	0.00	5,629.59	-811.73	-190.00	-110.17	0.00	0.00	0.00
5,800.00	0.00	0.00	5,729.59	-811.73	-190.00	-110.17	0.00	0.00	0.00
5,900.00	0.00	0.00	5,829.59	-811.73	-190.00	-110.17	0.00	0.00	0.00
6,000.00	0.00	0.00	5,929.59	-811.73	-190.00	-110.17	0.00	0.00	0.00
6,100.00	0.00	0.00	6,029.59	-811.73	-190.00	-110.17	0.00	0.00	0.00
6,200.00	0.00	0.00	6,129.59	-811.73	-190.00	-110.17	0.00	0.00	0.00
6,300.00	0.00	0.00	6,229.59	-811.73	-190.00	-110.17	0.00	0.00	0.00
6,400.00	0.00	0.00	6,329.59	-811.73	-190.00	-110.17	0.00	0.00	0.00
6,500.00	0.00	0.00	6,429.59	-811.73	-190.00	-110.17	0.00	0.00	0.00
6,600.00	0.00	0.00	6,529.59	-811.73	-190.00	-110.17	0.00	0.00	0.00
6,652.54	0.00	0.00	6,582.13	-811.73	-190.00	-110.17	0.00	0.00	0.00
<b>Start DLS 11.00 TFO 90.00</b>									
6,700.00	5.22	90.00	6,629.52	-811.73	-187.84	-108.02	11.00	11.00	0.00
6,800.00	16.22	90.00	6,727.63	-811.73	-169.27	-89.53	11.00	11.00	0.00
6,900.00	27.22	90.00	6,820.39	-811.73	-132.31	-52.76	11.00	11.00	0.00
7,000.00	38.22	90.00	6,904.39	-811.73	-78.34	0.96	11.00	11.00	0.00
7,100.00	49.22	90.00	6,976.55	-811.73	-9.33	69.64	11.00	11.00	0.00
7,200.00	60.22	90.00	7,034.22	-811.73	72.17	150.76	11.00	11.00	0.00
7,300.00	71.22	90.00	7,075.27	-811.73	163.19	241.35	11.00	11.00	0.00
7,400.00	82.22	90.00	7,098.21	-811.73	260.37	338.06	11.00	11.00	0.00
7,470.72	90.00	90.00	7,103.00	-811.73	330.87	408.23	11.00	11.00	0.00
<b>Start 7977.53 hold at 7470.72 MD</b>									
7,500.00	90.00	90.00	7,103.00	-811.73	360.15	437.37	0.00	0.00	0.00
7,600.00	90.00	90.00	7,103.00	-811.73	460.15	536.90	0.00	0.00	0.00
7,700.00	90.00	90.00	7,103.00	-811.73	560.15	636.42	0.00	0.00	0.00
7,800.00	90.00	90.00	7,103.00	-811.73	660.15	735.95	0.00	0.00	0.00
7,900.00	90.00	90.00	7,103.00	-811.73	760.15	835.48	0.00	0.00	0.00
8,000.00	90.00	90.00	7,103.00	-811.73	860.15	935.00	0.00	0.00	0.00
8,100.00	90.00	90.00	7,103.00	-811.73	960.15	1,034.53	0.00	0.00	0.00
8,200.00	90.00	90.00	7,103.00	-811.73	1,060.15	1,134.06	0.00	0.00	0.00
8,300.00	90.00	90.00	7,103.00	-811.73	1,160.15	1,233.58	0.00	0.00	0.00
8,400.00	90.00	90.00	7,103.00	-811.73	1,260.15	1,333.11	0.00	0.00	0.00
8,500.00	90.00	90.00	7,103.00	-811.73	1,360.15	1,432.63	0.00	0.00	0.00
8,600.00	90.00	90.00	7,103.00	-811.73	1,460.15	1,532.16	0.00	0.00	0.00
8,700.00	90.00	90.00	7,103.00	-811.73	1,560.15	1,631.69	0.00	0.00	0.00
8,800.00	90.00	90.00	7,103.00	-811.73	1,660.15	1,731.21	0.00	0.00	0.00
8,900.00	90.00	90.00	7,103.00	-811.73	1,760.15	1,830.74	0.00	0.00	0.00
9,000.00	90.00	90.00	7,103.00	-811.73	1,860.15	1,930.26	0.00	0.00	0.00
9,100.00	90.00	90.00	7,103.00	-811.73	1,960.15	2,029.79	0.00	0.00	0.00
9,200.00	90.00	90.00	7,103.00	-811.73	2,060.15	2,129.32	0.00	0.00	0.00
9,300.00	90.00	90.00	7,103.00	-811.73	2,160.15	2,228.84	0.00	0.00	0.00

<b>Database:</b>	Casper District	<b>Local Co-ordinate Reference:</b>	Well Fagerberg 36N-7B-M
<b>Company:</b>	Synergy Resources Corp.	<b>TVD Reference:</b>	GL 4800 & KB 20 @ 4820.00ft (PD 462)
<b>Project:</b>	Weld County, CO NAD 83	<b>MD Reference:</b>	GL 4800 & KB 20 @ 4820.00ft (PD 462)
<b>Site:</b>	SRC Fagerberg 13-12 Pad	<b>North Reference:</b>	True
<b>Well:</b>	Fagerberg 36N-7B-M	<b>Survey Calculation Method:</b>	Minimum Curvature
<b>Wellbore:</b>	OH		
<b>Design:</b>	Plan #2		

Planned Survey									
Measured Depth (ft)	Inclination (°)	Azimuth (°)	Vertical Depth (ft)	+N/-S (ft)	+E/-W (ft)	Vertical Section (ft)	Dogleg Rate (°/100ft)	Build Rate (°/100ft)	Turn Rate (°/100ft)
9,400.00	90.00	90.00	7,103.00	-811.73	2,260.15	2,328.37	0.00	0.00	0.00
9,500.00	90.00	90.00	7,103.00	-811.73	2,360.15	2,427.90	0.00	0.00	0.00
9,600.00	90.00	90.00	7,103.00	-811.73	2,460.15	2,527.42	0.00	0.00	0.00
9,700.00	90.00	90.00	7,103.00	-811.73	2,560.15	2,626.95	0.00	0.00	0.00
9,800.00	90.00	90.00	7,103.00	-811.73	2,660.15	2,726.47	0.00	0.00	0.00
9,900.00	90.00	90.00	7,103.00	-811.73	2,760.15	2,826.00	0.00	0.00	0.00
10,000.00	90.00	90.00	7,103.00	-811.73	2,860.15	2,925.53	0.00	0.00	0.00
10,100.00	90.00	90.00	7,103.00	-811.73	2,960.15	3,025.05	0.00	0.00	0.00
10,200.00	90.00	90.00	7,103.00	-811.73	3,060.15	3,124.58	0.00	0.00	0.00
10,300.00	90.00	90.00	7,103.00	-811.73	3,160.15	3,224.10	0.00	0.00	0.00
10,400.00	90.00	90.00	7,103.00	-811.73	3,260.15	3,323.63	0.00	0.00	0.00
10,500.00	90.00	90.00	7,103.00	-811.73	3,360.15	3,423.16	0.00	0.00	0.00
10,600.00	90.00	90.00	7,103.00	-811.73	3,460.15	3,522.68	0.00	0.00	0.00
10,700.00	90.00	90.00	7,103.00	-811.73	3,560.15	3,622.21	0.00	0.00	0.00
10,800.00	90.00	90.00	7,103.00	-811.73	3,660.15	3,721.73	0.00	0.00	0.00
10,900.00	90.00	90.00	7,103.00	-811.73	3,760.15	3,821.26	0.00	0.00	0.00
11,000.00	90.00	90.00	7,103.00	-811.73	3,860.15	3,920.79	0.00	0.00	0.00
11,100.00	90.00	90.00	7,103.00	-811.73	3,960.15	4,020.31	0.00	0.00	0.00
11,200.00	90.00	90.00	7,103.00	-811.73	4,060.15	4,119.84	0.00	0.00	0.00
11,300.00	90.00	90.00	7,103.00	-811.73	4,160.15	4,219.37	0.00	0.00	0.00
11,400.00	90.00	90.00	7,103.00	-811.73	4,260.15	4,318.89	0.00	0.00	0.00
11,500.00	90.00	90.00	7,103.00	-811.73	4,360.15	4,418.42	0.00	0.00	0.00
11,600.00	90.00	90.00	7,103.00	-811.73	4,460.15	4,517.94	0.00	0.00	0.00
11,700.00	90.00	90.00	7,103.00	-811.73	4,560.15	4,617.47	0.00	0.00	0.00
11,800.00	90.00	90.00	7,103.00	-811.73	4,660.15	4,717.00	0.00	0.00	0.00
11,900.00	90.00	90.00	7,103.00	-811.73	4,760.15	4,816.52	0.00	0.00	0.00
12,000.00	90.00	90.00	7,103.00	-811.73	4,860.15	4,916.05	0.00	0.00	0.00
12,100.00	90.00	90.00	7,103.00	-811.73	4,960.15	5,015.57	0.00	0.00	0.00
12,200.00	90.00	90.00	7,103.00	-811.73	5,060.15	5,115.10	0.00	0.00	0.00
12,300.00	90.00	90.00	7,103.00	-811.73	5,160.15	5,214.63	0.00	0.00	0.00
12,400.00	90.00	90.00	7,103.00	-811.73	5,260.15	5,314.15	0.00	0.00	0.00
12,500.00	90.00	90.00	7,103.00	-811.73	5,360.15	5,413.68	0.00	0.00	0.00
12,600.00	90.00	90.00	7,103.00	-811.73	5,460.15	5,513.21	0.00	0.00	0.00
12,700.00	90.00	90.00	7,103.00	-811.73	5,560.15	5,612.73	0.00	0.00	0.00
12,800.00	90.00	90.00	7,103.00	-811.73	5,660.15	5,712.26	0.00	0.00	0.00
12,900.00	90.00	90.00	7,103.00	-811.73	5,760.15	5,811.78	0.00	0.00	0.00
13,000.00	90.00	90.00	7,103.00	-811.73	5,860.15	5,911.31	0.00	0.00	0.00
13,100.00	90.00	90.00	7,103.00	-811.73	5,960.15	6,010.84	0.00	0.00	0.00
13,200.00	90.00	90.00	7,103.00	-811.73	6,060.15	6,110.36	0.00	0.00	0.00
13,300.00	90.00	90.00	7,103.00	-811.73	6,160.15	6,209.89	0.00	0.00	0.00
13,400.00	90.00	90.00	7,103.00	-811.73	6,260.15	6,309.41	0.00	0.00	0.00
13,500.00	90.00	90.00	7,103.00	-811.73	6,360.15	6,408.94	0.00	0.00	0.00
13,600.00	90.00	90.00	7,103.00	-811.73	6,460.15	6,508.47	0.00	0.00	0.00
13,700.00	90.00	90.00	7,103.00	-811.73	6,560.15	6,607.99	0.00	0.00	0.00
13,800.00	90.00	90.00	7,103.00	-811.73	6,660.15	6,707.52	0.00	0.00	0.00
13,900.00	90.00	90.00	7,103.00	-811.73	6,760.15	6,807.04	0.00	0.00	0.00
14,000.00	90.00	90.00	7,103.00	-811.73	6,860.15	6,906.57	0.00	0.00	0.00
14,100.00	90.00	90.00	7,103.00	-811.73	6,960.15	7,006.10	0.00	0.00	0.00
14,200.00	90.00	90.00	7,103.00	-811.73	7,060.15	7,105.62	0.00	0.00	0.00
14,300.00	90.00	90.00	7,103.00	-811.73	7,160.15	7,205.15	0.00	0.00	0.00
14,400.00	90.00	90.00	7,103.00	-811.73	7,260.15	7,304.68	0.00	0.00	0.00
14,500.00	90.00	90.00	7,103.00	-811.73	7,360.15	7,404.20	0.00	0.00	0.00
14,600.00	90.00	90.00	7,103.00	-811.73	7,460.15	7,503.73	0.00	0.00	0.00
14,700.00	90.00	90.00	7,103.00	-811.73	7,560.15	7,603.25	0.00	0.00	0.00



<b>Database:</b>	Casper District	<b>Local Co-ordinate Reference:</b>	Well Fagerberg 36N-7B-M
<b>Company:</b>	Synergy Resources Corp.	<b>TVD Reference:</b>	GL 4800 & KB 20 @ 4820.00ft (PD 462)
<b>Project:</b>	Weld County, CO NAD 83	<b>MD Reference:</b>	GL 4800 & KB 20 @ 4820.00ft (PD 462)
<b>Site:</b>	SRC Fagerberg 13-12 Pad	<b>North Reference:</b>	True
<b>Well:</b>	Fagerberg 36N-7B-M	<b>Survey Calculation Method:</b>	Minimum Curvature
<b>Wellbore:</b>	OH		
<b>Design:</b>	Plan #2		

Planned Survey									
Measured Depth (ft)	Inclination (°)	Azimuth (°)	Vertical Depth (ft)	+N/-S (ft)	+E/-W (ft)	Vertical Section (ft)	Dogleg Rate (°/100ft)	Build Rate (°/100ft)	Turn Rate (°/100ft)
14,800.00	90.00	90.00	7,103.00	-811.73	7,660.15	7,702.78	0.00	0.00	0.00
14,900.00	90.00	90.00	7,103.00	-811.73	7,760.15	7,802.31	0.00	0.00	0.00
15,000.00	90.00	90.00	7,103.00	-811.73	7,860.15	7,901.83	0.00	0.00	0.00
15,100.00	90.00	90.00	7,103.00	-811.73	7,960.15	8,001.36	0.00	0.00	0.00
15,200.00	90.00	90.00	7,103.00	-811.73	8,060.15	8,100.88	0.00	0.00	0.00
15,300.00	90.00	90.00	7,103.00	-811.73	8,160.15	8,200.41	0.00	0.00	0.00
15,400.00	90.00	90.00	7,103.00	-811.73	8,260.15	8,299.94	0.00	0.00	0.00
15,448.26	90.00	90.00	7,103.00	-811.73	8,308.41	8,347.96	0.00	0.00	0.00
TD at 15448.26 - 36N-7B-M(330 FSL 2040 FEL) PBHL									

Design Targets									
Target Name	Dip Angle (°)	Dip Dir. (°)	TVD (ft)	+N/-S (ft)	+E/-W (ft)	Northing (usft)	Easting (usft)	Latitude	Longitude
- hit/miss target									
- Shape									
36N-7B-M(330 FSL 2040 FEL) PBHL	0.00	0.00	7,103.00	-811.73	8,308.41	1,424,667.97	3,221,305.15	40.4963890	-104.7042550
- plan hits target center									
- Point									

Casing Points					
Measured Depth (ft)	Vertical Depth (ft)	Name	Casing Diameter (in)	Hole Diameter (in)	
1,718.01	1,700.00	9 5/8"	9.625	13.500	

Plan Annotations				
Measured Depth (ft)	Vertical Depth (ft)	Local Coordinates		Comment
		+N/-S (ft)	+E/-W (ft)	
200.00	200.00	0.00	0.00	Start Build 2.00
700.14	697.61	-42.40	-9.92	Start 4298.12 hold at 700.14 MD
4,998.26	4,930.39	-769.33	-180.08	Start Drop -2.00
5,498.41	5,428.00	-811.73	-190.00	Start 1154.13 hold at 5498.41 MD
6,652.54	6,582.13	-811.73	-190.00	Start DLS 11.00 TFO 90.00
7,470.72	7,103.00	-811.73	330.87	Start 7977.53 hold at 7470.72 MD
15,448.26	7,103.00	-811.73	8,308.41	TD at 15448.26