

T6N, R66W

NW. COR.
SEC. 12, T6N, R66W
FOUND 2 1/2" ALUM. CAP
L.S. NO. 12374
LAT: 40.510184
LON: -104.734834

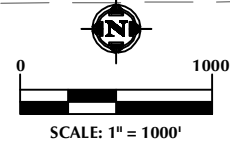
NE. COR.
SEC. 12, T6N, R66W
FOUND 2 1/2" ALUM. CAP
L.S. NO. 23501
LAT: 40.510135
LON: -104.715831

N. 1/4 COR.
SEC. 12, T6N, R66W
FOUND 2 1/2" ALUM. CAP
L.S. NO. 28657
LAT: 40.510160
LON: -104.725334

SURFACE LOCATION
GROUND ELEVATION= 4799.9'
LATITUDE= 40.498621°
LONGITUDE= -104.734129°
1/4 1/4: SW1/4 SW1/4

TOP OF PRODUCTION
LATITUDE= 40.496484°
LONGITUDE= -104.733071°
1/4 1/4: SW1/4 SW1/4

BOTTOM HOLE LOCATION
LATITUDE= 40.496389°
LONGITUDE= -104.704255°
1/4 1/4: SW1/4 SE1/4



W. 1/4 COR.
SEC. 12, T6N, R66W
FOUND 2 1/2" ALUM. CAP
L.S. NO. 30462
LAT: 40.502879
LON: -104.734933

E. 1/4 COR.
SEC. 12, T6N, R66W
FOUND 2 1/2" ALUM. CAP
L.S. NO. 24670
LAT: 40.502874
LON: -104.715878

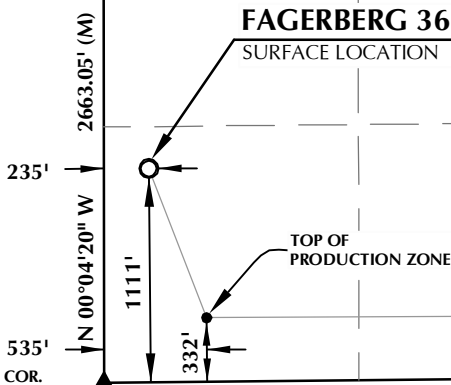
LAT: 40.502877
LON: -104.725391

12

S 89°31'21" W
2645.21' (C)

MATCH LINE
SEE SHEET 2

FAGERBERG 36N-7B-M
SURFACE LOCATION



WELL BORE
CONTINUES
INTO SECTION
7, T6N, R65W

SW. COR.
SEC. 12, T6N, R66W
FOUND 2 1/2" ALUM. CAP
L.S. NO. 23501
LAT: 40.495570
LON: -104.735003

S. 1/4 COR.
SEC. 12, T6N, R66W
FOUND 2 1/2" ALUM. CAP
NUMBER ILLEGIBLE
LAT: 40.495583
LON: -104.725448

S 89°23'52" W 2658.49' (M)

SE. COR.
SEC. 12, T6N, R66W
FOUND 2 1/2" ALUM. CAP
L.S. NO. 38307
LAT: 40.495595
LON: -104.715889

CERTIFICATE OF SURVEYOR:

THIS IS TO CERTIFY THAT THE ABOVE PLAT WAS PREPARED FROM FIELD NOTES OF ACTUAL SURVEY MADE BY ME OR UNDER MY SUPERVISION AND THAT THE SAME ARE TRUE AND CORRECT TO THE BEST OF MY KNOWLEDGE AND BELIEF. THIS CERTIFICATE DOES NOT REPRESENT A LAND SURVEY PLAT OR IMPROVEMENT SURVEY PLAT AS DEFINED BY C.R.S. 38-51-102 AND CANNOT BE RELIED UPON TO DETERMINE OWNERSHIP.

John R. Slaugh
JOHN R. SLAUGH
PROFESSIONAL LAND SURVEYOR
COLORADO REGISTRATION NUMBER 82330
2/18/16

NOTICE:
ACCORDING TO COLORADO STATE LAW YOU MUST COMMENCE ANY LEGAL ACTION BASED UPON ANY DEFECT IN THIS SURVEY WITHIN THREE YEARS AFTER YOU FIRST DISCOVER SUCH DEFECT. IN NO EVENT MAY ANY ACTION BASED UPON ANY DEFECT IN THIS SURVEY BE COMMENCED MORE THAN TEN YEARS FROM THE DATE ON THE CERTIFICATION SHOWN HEREON.

WELL DISTANCES:

BUILDING: ±1033' SE
BUILDING UNIT: ±1059' SE
HIGH OCCUPANCY BUILDING UNIT: 5280'+
DESIGNATED OUTSIDE ACTIVITY AREA: 5280'+
PUBLIC ROAD: ±205' W
PROPERTY LINE: ±235' W
ABOVE GROUND UTILITY: ±266' W
RAILROAD: 5280'+

NOTES:

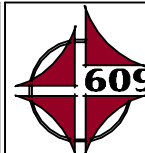
- ▲ INDICATES FOUND SECTION CORNER
- INDICATES CALCULATED CORNER
- DRAWING LATITUDE AND LONGITUDE COORDINATES ARE NAD 83 (2011)(EPOCH:2010)
- ELEVATION BASED ON NAVD88 (GEOID12B)
- BASIS OF BEARING DERIVED FROM COLORADO COORDINATE SYSTEM OF 1983 NORTH ZONE.
- ALL MEASURED DISTANCES ARE GRID. COMBINED SCALE FACTOR: .99973936
- OPERATOR: ROB WILSON / PDOP = 1.4
- SEE ADDENDUM TO WELL LOCATION CERTIFICATE FOR EXISTING IMPROVEMENTS WITHIN 500' OF THE WELL PAD.
- WELL FOOTAGES ARE MEASURED AT RIGHT ANGLES TO THE SECTION LINES.
- THE BOTTOM OF HOLE BEARS N89°44'31"E, 8014' FROM THE TOP OF PRODUCTION ZONE.

WELL PAD - FAGERBERG 33-12

FAGERBERG 36N-7B-M
WELL LOCATION CERTIFICATE
1111' FSL & 235' FWL SWSW (SURFACE)
332' FSL & 535' FWL SWSE (TOP OF PRODUCTION)
LOCATED IN SECTION 12
T6N, R66W, 6TH P.M.
330' FSL & 2040' FEL SWSE (BOTTOM)
LOCATED IN SECTION 7
T6N, R65W, 6TH P.M.
WELD COUNTY, COLORADO



1625 Broadway, Suite 300
Denver, Colorado 80202



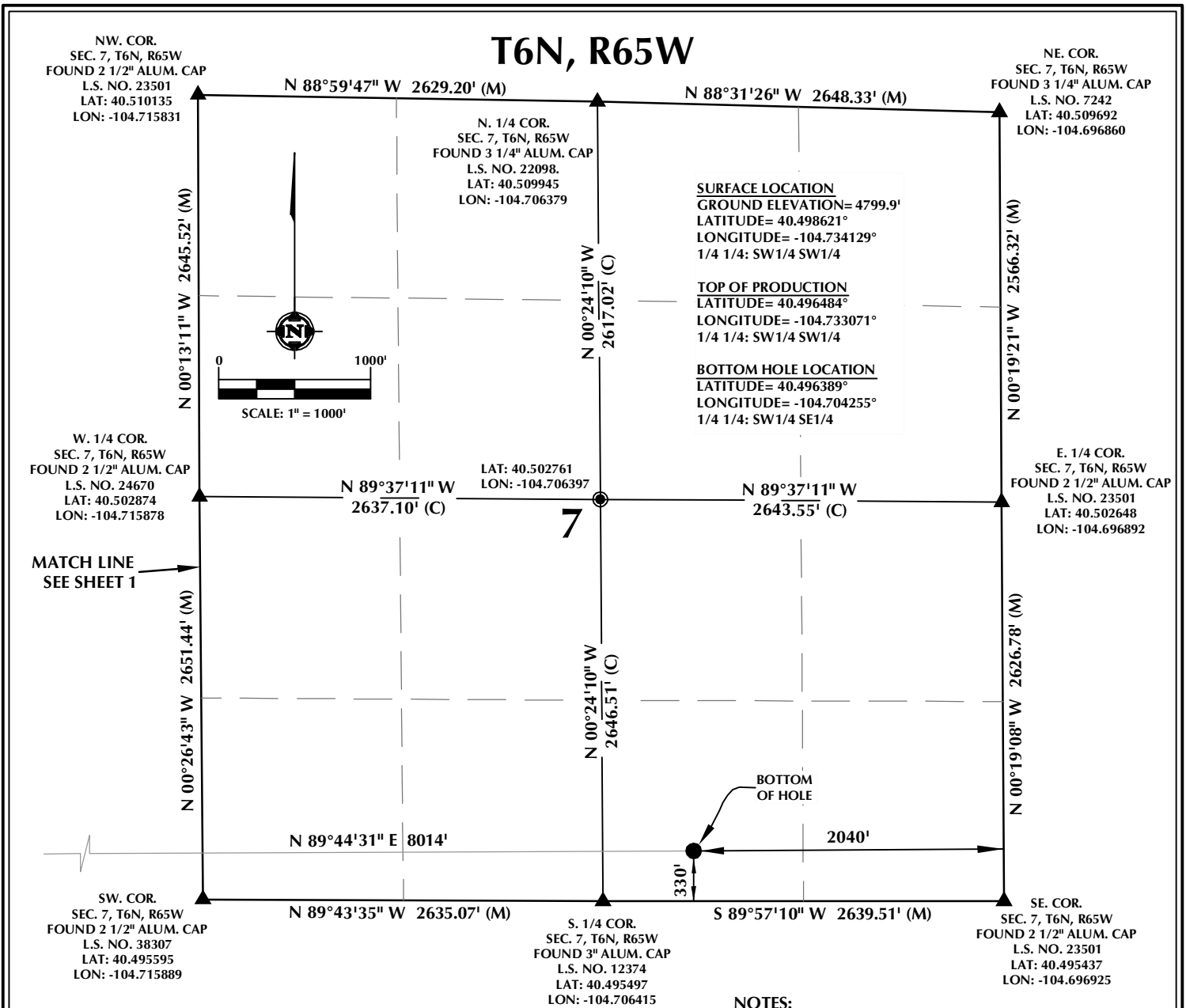
CONSULTING, LLC

SHERIDAN OFFICE
1095 Saberton Avenue
Sheridan, Wyoming 82801
Phone 307-674-0609

LOVELAND OFFICE
1635 Foxtrail Drive, Suite 204
Loveland, Colorado 80538
Phone 970-776-4331

DRAFTED BY:	LMO	CHECKED BY:	JRS	SHEET NO:
DATE DRAFTED:	2/18/16	DATE SURVEYED:	2/16/16	1
REVISED:		FILE NAME:	16-21	1 OF 2

K:\SYNERGY RESOURCES\2016_21_FAGERBERG SEC. 12\PLAT\SYNERGY FAGERBERG 33-12 PLAT.dwg, 2022/06/12 2:26:20 PM, lbr



CERTIFICATE OF SURVEYOR:

THIS IS TO CERTIFY THAT THE ABOVE PLAT WAS PREPARED FROM FIELD NOTES OF ACTUAL SURVEY MADE BY ME OR UNDER MY SUPERVISION AND THAT THE SAME ARE TRUE AND CORRECT TO THE BEST OF MY KNOWLEDGE AND BELIEF. THIS CERTIFICATE DOES NOT REPRESENT A LAND SURVEY PLAT OR IMPROVEMENT SURVEY PLAT AS DEFINED BY C.R.S. 38-51-102 AND CANNOT BE RELIED UPON TO DETERMINE OWNERSHIP.

JOHN R. SLAUGH
PROFESSIONAL LAND SURVEYOR
COLORADO REGISTRATION NUMBER 38230
2/18/16

NOTICE:
ACCORDING TO COLORADO STATE LAW YOU MUST COMMENCE ANY LEGAL ACTION BASED UPON ANY DEFECT IN THIS SURVEY WITHIN THREE YEARS AFTER YOU FIRST DISCOVER SUCH DEFECT. IN NO EVENT MAY ANY ACTION BASED UPON ANY DEFECT IN THIS SURVEY BE COMMENCED MORE THAN TEN YEARS FROM THE DATE ON THE CERTIFICATION SHOWN HEREON.

WELL DISTANCES:

BUILDING: ±1033' SE
BUILDING UNIT: ±1059' SE
HIGH OCCUPANCY BUILDING UNIT: 5280'+
DESIGNATED OUTSIDE ACTIVITY AREA: 5280'+
PUBLIC ROAD: ±205' W
PROPERTY LINE: ±235' W
ABOVE GROUND UTILITY: ±266' W
RAILROAD: 5280'+

NOTES:

- ▲ INDICATES FOUND SECTION CORNER
- INDICATES CALCULATED CORNER
- DRAWING LATITUDE AND LONGITUDE COORDINATES ARE NAD 83 (2011)(EPOCH:2010)
- ELEVATION BASED ON NAVD88 (GEOID12B)
- BASIS OF BEARING DERIVED FROM COLORADO COORDINATE SYSTEM OF 1983 NORTH ZONE.
- ALL MEASURED DISTANCES ARE GRID. COMBINED SCALE FACTOR: .99973936
- OPERATOR: ROB WILSON / PDOP = 1.4
- SEE ADDENDUM TO WELL LOCATION CERTIFICATE FOR EXISTING IMPROVEMENTS WITHIN 500' OF THE WELL PAD.
- WELL FOOTAGES ARE MEASURED AT RIGHT ANGLES TO THE SECTION LINES.
- THE BOTTOM OF HOLE BEARS N89°44'31"E, 8014' FROM THE TOP OF PRODUCTION ZONE.

WELL PAD - FAGERBERG 33-12

FAGERBERG 36N-7B-M
WELL LOCATION CERTIFICATE
1111' FSL & 235' FWL SWSW (SURFACE)
332' FSL & 535' FWL SWSW (TOP OF PRODUCTION)
LOCATED IN SECTION 12
T6N, R66W, 6TH P.M.
330' FSL & 2040' FEL SWSE (BOTTOM)
LOCATED IN SECTION 7
T6N, R65W, 6TH P.M.
WELD COUNTY, COLORADO



1625 Broadway, Suite 300
Denver, Colorado 80202



CONSULTING, LLC

SHERIDAN OFFICE
1095 Saberton Avenue
Sheridan, Wyoming 82801
Phone 307-674-0609

LOVELAND OFFICE
1635 Foxtrail Drive, Suite 204
Loveland, Colorado 80538
Phone 970-776-4331

DRAFTED BY:	LMO	CHECKED BY:	JRS	SHEET NO:
DATE DRAFTED:	2/18/16	DATE SURVEYED:	2/16/16	2
REVISED:		FILE NAME:	16-21	2 OF 2