



## PROJECT DETAILS: Weld County, CO NAD 83

Geodetic System: US State Plane 1983  
Datum: North American Datum 1983  
Ellipsoid: GRS 1980  
Zone: Colorado Northern Zone  
System Datum: Mean Sea Level  
Local North: True

Project: Weld County, CO NAD 83  
Site: SRC Fagerberg 13-12 Pad  
Well: Fagerberg 23N-7C-M  
Wellbore: OH  
Design: Plan #2



Azimuths to True North  
Magnetic North: 8.49°



Magnetic Field  
Strength: 52600.6snT  
Dip Angle: 67.03°  
Date: 2/17/2016  
Model: BGGM2015

## SECTION DETAILS

MD	Inc	Azi	TVD	+N/-S	+E/-W	Dleg	TFace	VSect
0.00	0.00	0.00	0.00	0.00	0.00	0.00	0.00	0.00
300.00	0.00	0.00	300.00	0.00	0.00	0.00	0.00	0.00
749.93	9.00	227.20	748.09	-23.96	-25.87	2.00	227.20	-25.37
1911.05	9.00	227.20	1894.91	-147.35	-159.13	0.00	0.00	-156.03
2360.99	0.00	0.00	2343.00	-171.31	-185.00	2.00	180.00	-181.40
6672.12	0.00	0.00	6654.13	-171.31	-185.00	0.00	0.00	-181.40
7490.30	90.00	90.00	7175.00	-171.31	335.87	11.00	90.00	339.36
15384.46	90.00	90.00	7175.00	-171.30	8230.03	0.00	0.00	8231.82

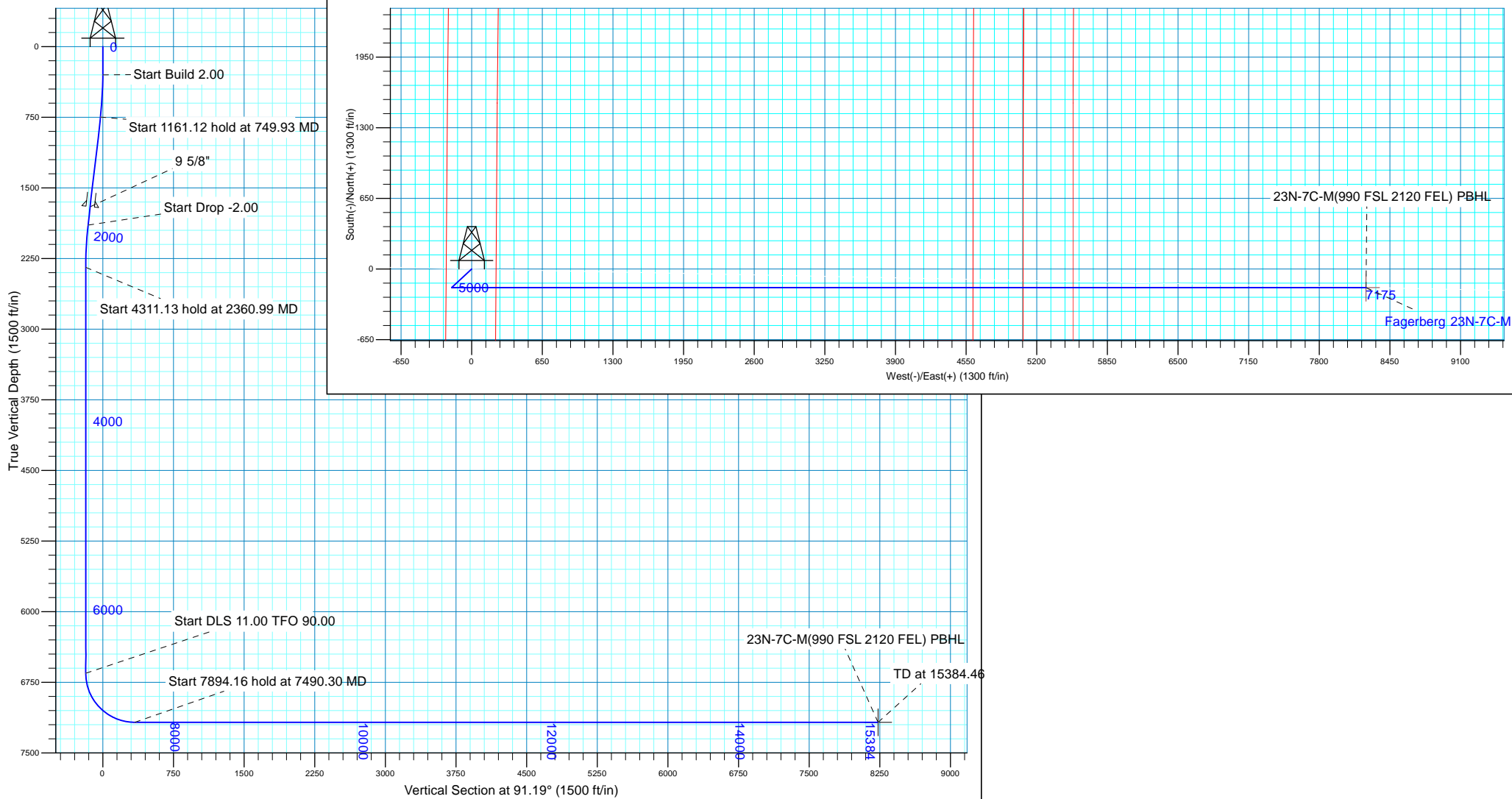
## WELL DETAILS: Fagerberg 23N-7C-M

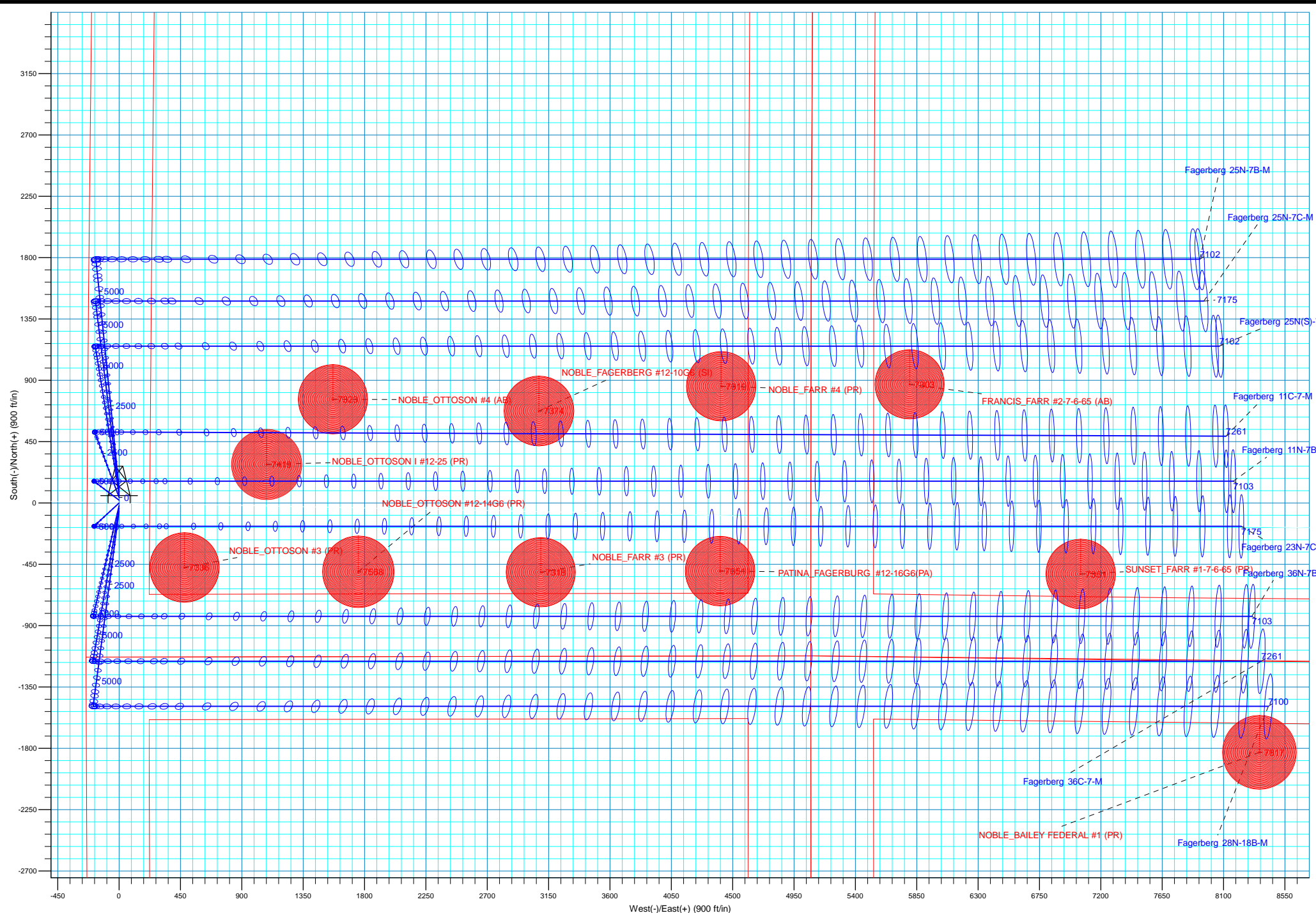
		GL 4800 & KB 20 @ 4820.00ft (PD 462)		4800.00		
+N/-S	+E/-W	Northing	Easting	Latitude	Longitude	
0.00	0.00	1425427.94	3212990.16	40.4986760	-104.7341280	

Plan: Plan #2 (Fagerberg 23N-7C-M/OH)

## CASING DETAILS

Created By: rscott	Date: 12:49, February 23 2016	TVD	MD	Name	Size
		1700.00	713.71	9 5/8"	9.625







## **Synergy Resources Corp.**

Weld County, CO NAD 83  
SRC Fagerberg 13-12 Pad  
Fagerberg 23N-7C-M

OH

Plan: Plan #2

## **Standard Planning Report**

23 February, 2016



<b>Database:</b>	Casper District	<b>Local Co-ordinate Reference:</b>	Well Fagerberg 23N-7C-M
<b>Company:</b>	Synergy Resources Corp.	<b>TVD Reference:</b>	GL 4800 & KB 20 @ 4820.00ft (PD 462)
<b>Project:</b>	Weld County, CO NAD 83	<b>MD Reference:</b>	GL 4800 & KB 20 @ 4820.00ft (PD 462)
<b>Site:</b>	SRC Fagerberg 13-12 Pad	<b>North Reference:</b>	True
<b>Well:</b>	Fagerberg 23N-7C-M	<b>Survey Calculation Method:</b>	Minimum Curvature
<b>Wellbore:</b>	OH		
<b>Design:</b>	Plan #2		

<b>Project</b>	Weld County, CO NAD 83		
<b>Map System:</b>	US State Plane 1983	<b>System Datum:</b>	Mean Sea Level
<b>Geo Datum:</b>	North American Datum 1983		
<b>Map Zone:</b>	Colorado Northern Zone		

Site		SRC Fagerberg 13-12 Pad, SECTION 12 T6N R66W			
Site Position:		Northing:	1,425,367.83 usft	Latitude:	40.4985110
From:	Lat/Long	Easting:	3,212,990.12 usft	Longitude:	-104.7341300
Position Uncertainty:	3.28 ft	Slot Radius:	13.200 in	Grid Convergence:	0.49 °

Well	Fagerberg 23N-7C-M, 1131 FSL 235 FWL					
Well Position	+N/-S	60.11 ft	Northing:	1,425,427.94 usft	Latitude:	40.4986760
	+E/-W	0.56 ft	Easting:	3,212,990.16 usft	Longitude:	-104.7341280
Position Uncertainty		3.28 ft	Wellhead Elevation:	0.00 ft	Ground Level:	4,800.00 ft

<b>Wellbore</b>	OH				
<b>Magnetics</b>	<b>Model Name</b>	<b>Sample Date</b>	<b>Declination (°)</b>	<b>Dip Angle (°)</b>	<b>Field Strength (nT)</b>
	BGGM2015	2/17/2016	8.49	67.03	52,601

<b>Design</b>	Plan #2			
<b>Audit Notes:</b>				
<b>Version:</b>	<b>Phase:</b>	PLAN	<b>Tie On Depth:</b>	0.00
<b>Vertical Section:</b>	<b>Depth From (TVD) (ft)</b>	<b>+N/-S (ft)</b>	<b>+E/-W (ft)</b>	<b>Direction (°)</b>
	0.00	0.00	0.00	91.19

<b>Plan Sections</b>										
Measured Depth (ft)	Inclination (°)	Azimuth (°)	Vertical Depth (ft)	+N/-S (ft)	+E/-W (ft)	Dogleg Rate (°/100ft)	Build Rate (°/100ft)	Turn Rate (°/100ft)	TFO (°)	Target
0.00	0.00	0.00	0.00	0.00	0.00	0.00	0.00	0.00	0.00	
300.00	0.00	0.00	300.00	0.00	0.00	0.00	0.00	0.00	0.00	
749.93	9.00	227.20	748.09	-23.96	-25.87	2.00	2.00	0.00	227.20	
1,911.05	9.00	227.20	1,894.91	-147.35	-159.13	0.00	0.00	0.00	0.00	
2,360.99	0.00	0.00	2,343.00	-171.31	-185.00	2.00	-2.00	0.00	180.00	
6,672.12	0.00	0.00	6,654.13	-171.31	-185.00	0.00	0.00	0.00	0.00	
7,490.30	90.00	90.00	7,175.00	-171.31	335.87	11.00	11.00	11.00	90.00	
15,384.46	90.00	90.00	7,175.00	-171.30	8,230.03	0.00	0.00	0.00	0.00	23N-7C-M(990 FSL 2

<b>Database:</b>	Casper District	<b>Local Co-ordinate Reference:</b>	Well Fagerberg 23N-7C-M
<b>Company:</b>	Synergy Resources Corp.	<b>TVD Reference:</b>	GL 4800 & KB 20 @ 4820.00ft (PD 462)
<b>Project:</b>	Weld County, CO NAD 83	<b>MD Reference:</b>	GL 4800 & KB 20 @ 4820.00ft (PD 462)
<b>Site:</b>	SRC Fagerberg 13-12 Pad	<b>North Reference:</b>	True
<b>Well:</b>	Fagerberg 23N-7C-M	<b>Survey Calculation Method:</b>	Minimum Curvature
<b>Wellbore:</b>	OH		
<b>Design:</b>	Plan #2		

Planned Survey									
Measured Depth (ft)	Inclination (°)	Azimuth (°)	Vertical Depth (ft)	+N/-S (ft)	+E/-W (ft)	Vertical Section (ft)	Dogleg Rate (°/100ft)	Build Rate (°/100ft)	Turn Rate (°/100ft)
0.00	0.00	0.00	0.00	0.00	0.00	0.00	0.00	0.00	0.00
100.00	0.00	0.00	100.00	0.00	0.00	0.00	0.00	0.00	0.00
200.00	0.00	0.00	200.00	0.00	0.00	0.00	0.00	0.00	0.00
300.00	0.00	0.00	300.00	0.00	0.00	0.00	0.00	0.00	0.00
<b>Start Build 2.00</b>									
400.00	2.00	227.20	399.98	-1.19	-1.28	-1.26	2.00	2.00	0.00
500.00	4.00	227.20	499.84	-4.74	-5.12	-5.02	2.00	2.00	0.00
600.00	6.00	227.20	599.45	-10.66	-11.52	-11.29	2.00	2.00	0.00
700.00	8.00	227.20	698.70	-18.94	-20.46	-20.06	2.00	2.00	0.00
749.93	9.00	227.20	748.09	-23.96	-25.87	-25.37	2.00	2.00	0.00
<b>Start 1161.12 hold at 749.93 MD</b>									
800.00	9.00	227.20	797.54	-29.28	-31.62	-31.00	0.00	0.00	0.00
900.00	9.00	227.20	896.31	-39.90	-43.09	-42.25	0.00	0.00	0.00
1,000.00	9.00	227.20	995.07	-50.53	-54.57	-53.51	0.00	0.00	0.00
1,100.00	9.00	227.20	1,093.84	-61.16	-66.05	-64.76	0.00	0.00	0.00
1,200.00	9.00	227.20	1,192.61	-71.79	-77.52	-76.01	0.00	0.00	0.00
1,300.00	9.00	227.20	1,291.38	-82.41	-89.00	-87.27	0.00	0.00	0.00
1,400.00	9.00	227.20	1,390.15	-93.04	-100.48	-98.52	0.00	0.00	0.00
1,500.00	9.00	227.20	1,488.92	-103.67	-111.95	-109.77	0.00	0.00	0.00
1,600.00	9.00	227.20	1,587.69	-114.29	-123.43	-121.03	0.00	0.00	0.00
1,700.00	9.00	227.20	1,686.46	-124.92	-134.91	-132.28	0.00	0.00	0.00
1,713.71	9.00	227.20	1,700.00	-126.38	-136.48	-133.82	0.00	0.00	0.00
<b>9 5/8"</b>									
1,800.00	9.00	227.20	1,785.23	-135.55	-146.38	-143.53	0.00	0.00	0.00
1,900.00	9.00	227.20	1,884.00	-146.18	-157.86	-154.78	0.00	0.00	0.00
1,911.05	9.00	227.20	1,894.91	-147.35	-159.13	-156.03	0.00	0.00	0.00
<b>Start Drop -2.00</b>									
2,000.00	7.22	227.20	1,982.97	-155.87	-168.33	-165.05	2.00	-2.00	0.00
2,100.00	5.22	227.20	2,082.37	-163.23	-176.28	-172.85	2.00	-2.00	0.00
2,200.00	3.22	227.20	2,182.10	-168.23	-181.68	-178.14	2.00	-2.00	0.00
2,300.00	1.22	227.20	2,282.02	-170.87	-184.52	-180.93	2.00	-2.00	0.00
2,360.99	0.00	0.00	2,343.00	-171.31	-185.00	-181.40	2.00	-2.00	0.00
<b>Start 4311.13 hold at 2360.99 MD</b>									
2,400.00	0.00	0.00	2,382.01	-171.31	-185.00	-181.40	0.00	0.00	0.00
2,500.00	0.00	0.00	2,482.01	-171.31	-185.00	-181.40	0.00	0.00	0.00
2,600.00	0.00	0.00	2,582.01	-171.31	-185.00	-181.40	0.00	0.00	0.00
2,700.00	0.00	0.00	2,682.01	-171.31	-185.00	-181.40	0.00	0.00	0.00
2,800.00	0.00	0.00	2,782.01	-171.31	-185.00	-181.40	0.00	0.00	0.00
2,900.00	0.00	0.00	2,882.01	-171.31	-185.00	-181.40	0.00	0.00	0.00
3,000.00	0.00	0.00	2,982.01	-171.31	-185.00	-181.40	0.00	0.00	0.00
3,100.00	0.00	0.00	3,082.01	-171.31	-185.00	-181.40	0.00	0.00	0.00
3,200.00	0.00	0.00	3,182.01	-171.31	-185.00	-181.40	0.00	0.00	0.00
3,300.00	0.00	0.00	3,282.01	-171.31	-185.00	-181.40	0.00	0.00	0.00
3,400.00	0.00	0.00	3,382.01	-171.31	-185.00	-181.40	0.00	0.00	0.00
3,500.00	0.00	0.00	3,482.01	-171.31	-185.00	-181.40	0.00	0.00	0.00
3,600.00	0.00	0.00	3,582.01	-171.31	-185.00	-181.40	0.00	0.00	0.00
3,700.00	0.00	0.00	3,682.01	-171.31	-185.00	-181.40	0.00	0.00	0.00
3,800.00	0.00	0.00	3,782.01	-171.31	-185.00	-181.40	0.00	0.00	0.00
3,900.00	0.00	0.00	3,882.01	-171.31	-185.00	-181.40	0.00	0.00	0.00
4,000.00	0.00	0.00	3,982.01	-171.31	-185.00	-181.40	0.00	0.00	0.00
4,100.00	0.00	0.00	4,082.01	-171.31	-185.00	-181.40	0.00	0.00	0.00
4,200.00	0.00	0.00	4,182.01	-171.31	-185.00	-181.40	0.00	0.00	0.00
4,300.00	0.00	0.00	4,282.01	-171.31	-185.00	-181.40	0.00	0.00	0.00
4,400.00	0.00	0.00	4,382.01	-171.31	-185.00	-181.40	0.00	0.00	0.00

<b>Database:</b>	Casper District	<b>Local Co-ordinate Reference:</b>	Well Fagerberg 23N-7C-M
<b>Company:</b>	Synergy Resources Corp.	<b>TVD Reference:</b>	GL 4800 & KB 20 @ 4820.00ft (PD 462)
<b>Project:</b>	Weld County, CO NAD 83	<b>MD Reference:</b>	GL 4800 & KB 20 @ 4820.00ft (PD 462)
<b>Site:</b>	SRC Fagerberg 13-12 Pad	<b>North Reference:</b>	True
<b>Well:</b>	Fagerberg 23N-7C-M	<b>Survey Calculation Method:</b>	Minimum Curvature
<b>Wellbore:</b>	OH		
<b>Design:</b>	Plan #2		

Planned Survey									
Measured Depth (ft)	Inclination (°)	Azimuth (°)	Vertical Depth (ft)	+N/-S (ft)	+E/-W (ft)	Vertical Section (ft)	Dogleg Rate (°/100ft)	Build Rate (°/100ft)	Turn Rate (°/100ft)
4,500.00	0.00	0.00	4,482.01	-171.31	-185.00	-181.40	0.00	0.00	0.00
4,600.00	0.00	0.00	4,582.01	-171.31	-185.00	-181.40	0.00	0.00	0.00
4,700.00	0.00	0.00	4,682.01	-171.31	-185.00	-181.40	0.00	0.00	0.00
4,800.00	0.00	0.00	4,782.01	-171.31	-185.00	-181.40	0.00	0.00	0.00
4,900.00	0.00	0.00	4,882.01	-171.31	-185.00	-181.40	0.00	0.00	0.00
5,000.00	0.00	0.00	4,982.01	-171.31	-185.00	-181.40	0.00	0.00	0.00
5,100.00	0.00	0.00	5,082.01	-171.31	-185.00	-181.40	0.00	0.00	0.00
5,200.00	0.00	0.00	5,182.01	-171.31	-185.00	-181.40	0.00	0.00	0.00
5,300.00	0.00	0.00	5,282.01	-171.31	-185.00	-181.40	0.00	0.00	0.00
5,400.00	0.00	0.00	5,382.01	-171.31	-185.00	-181.40	0.00	0.00	0.00
5,500.00	0.00	0.00	5,482.01	-171.31	-185.00	-181.40	0.00	0.00	0.00
5,600.00	0.00	0.00	5,582.01	-171.31	-185.00	-181.40	0.00	0.00	0.00
5,700.00	0.00	0.00	5,682.01	-171.31	-185.00	-181.40	0.00	0.00	0.00
5,800.00	0.00	0.00	5,782.01	-171.31	-185.00	-181.40	0.00	0.00	0.00
5,900.00	0.00	0.00	5,882.01	-171.31	-185.00	-181.40	0.00	0.00	0.00
6,000.00	0.00	0.00	5,982.01	-171.31	-185.00	-181.40	0.00	0.00	0.00
6,100.00	0.00	0.00	6,082.01	-171.31	-185.00	-181.40	0.00	0.00	0.00
6,200.00	0.00	0.00	6,182.01	-171.31	-185.00	-181.40	0.00	0.00	0.00
6,300.00	0.00	0.00	6,282.01	-171.31	-185.00	-181.40	0.00	0.00	0.00
6,400.00	0.00	0.00	6,382.01	-171.31	-185.00	-181.40	0.00	0.00	0.00
6,500.00	0.00	0.00	6,482.01	-171.31	-185.00	-181.40	0.00	0.00	0.00
6,600.00	0.00	0.00	6,582.01	-171.31	-185.00	-181.40	0.00	0.00	0.00
6,672.12	0.00	0.00	6,654.13	-171.31	-185.00	-181.40	0.00	0.00	0.00
<b>Start DLS 11.00 TFO 90.00</b>									
6,700.00	3.07	90.00	6,682.00	-171.31	-184.25	-180.65	11.00	11.00	0.00
6,800.00	14.07	90.00	6,780.73	-171.31	-169.38	-165.78	11.00	11.00	0.00
6,900.00	25.07	90.00	6,874.81	-171.31	-135.94	-132.35	11.00	11.00	0.00
7,000.00	36.07	90.00	6,960.78	-171.31	-85.16	-81.58	11.00	11.00	0.00
7,100.00	47.07	90.00	7,035.49	-171.31	-18.92	-15.35	11.00	11.00	0.00
7,200.00	58.07	90.00	7,096.18	-171.31	60.37	63.92	11.00	11.00	0.00
7,300.00	69.07	90.00	7,140.62	-171.31	149.78	153.31	11.00	11.00	0.00
7,400.00	80.07	90.00	7,167.19	-171.31	246.02	249.54	11.00	11.00	0.00
7,490.30	90.00	90.00	7,175.00	-171.31	335.87	339.36	11.00	11.00	0.00
<b>Start 7894.16 hold at 7490.30 MD</b>									
7,500.00	90.00	90.00	7,175.00	-171.31	345.57	349.06	0.00	0.00	0.00
7,600.00	90.00	90.00	7,175.00	-171.31	445.57	449.04	0.00	0.00	0.00
7,700.00	90.00	90.00	7,175.00	-171.31	545.57	549.02	0.00	0.00	0.00
7,800.00	90.00	90.00	7,175.00	-171.31	645.57	649.00	0.00	0.00	0.00
7,900.00	90.00	90.00	7,175.00	-171.31	745.57	748.98	0.00	0.00	0.00
8,000.00	90.00	90.00	7,175.00	-171.31	845.57	848.95	0.00	0.00	0.00
8,100.00	90.00	90.00	7,175.00	-171.31	945.57	948.93	0.00	0.00	0.00
8,200.00	90.00	90.00	7,175.00	-171.31	1,045.57	1,048.91	0.00	0.00	0.00
8,300.00	90.00	90.00	7,175.00	-171.31	1,145.57	1,148.89	0.00	0.00	0.00
8,400.00	90.00	90.00	7,175.00	-171.31	1,245.57	1,248.87	0.00	0.00	0.00
8,500.00	90.00	90.00	7,175.00	-171.31	1,345.57	1,348.85	0.00	0.00	0.00
8,600.00	90.00	90.00	7,175.00	-171.31	1,445.57	1,448.82	0.00	0.00	0.00
8,700.00	90.00	90.00	7,175.00	-171.31	1,545.57	1,548.80	0.00	0.00	0.00
8,800.00	90.00	90.00	7,175.00	-171.31	1,645.57	1,648.78	0.00	0.00	0.00
8,900.00	90.00	90.00	7,175.00	-171.31	1,745.57	1,748.76	0.00	0.00	0.00
9,000.00	90.00	90.00	7,175.00	-171.31	1,845.57	1,848.74	0.00	0.00	0.00
9,100.00	90.00	90.00	7,175.00	-171.31	1,945.57	1,948.72	0.00	0.00	0.00
9,200.00	90.00	90.00	7,175.00	-171.31	2,045.57	2,048.69	0.00	0.00	0.00
9,300.00	90.00	90.00	7,175.00	-171.31	2,145.57	2,148.67	0.00	0.00	0.00

<b>Database:</b>	Casper District	<b>Local Co-ordinate Reference:</b>	Well Fagerberg 23N-7C-M
<b>Company:</b>	Synergy Resources Corp.	<b>TVD Reference:</b>	GL 4800 & KB 20 @ 4820.00ft (PD 462)
<b>Project:</b>	Weld County, CO NAD 83	<b>MD Reference:</b>	GL 4800 & KB 20 @ 4820.00ft (PD 462)
<b>Site:</b>	SRC Fagerberg 13-12 Pad	<b>North Reference:</b>	True
<b>Well:</b>	Fagerberg 23N-7C-M	<b>Survey Calculation Method:</b>	Minimum Curvature
<b>Wellbore:</b>	OH		
<b>Design:</b>	Plan #2		

Planned Survey									
Measured Depth (ft)	Inclination (°)	Azimuth (°)	Vertical Depth (ft)	+N/-S (ft)	+E/-W (ft)	Vertical Section (ft)	Dogleg Rate (°/100ft)	Build Rate (°/100ft)	Turn Rate (°/100ft)
9,400.00	90.00	90.00	7,175.00	-171.31	2,245.57	2,248.65	0.00	0.00	0.00
9,500.00	90.00	90.00	7,175.00	-171.31	2,345.57	2,348.63	0.00	0.00	0.00
9,600.00	90.00	90.00	7,175.00	-171.31	2,445.57	2,448.61	0.00	0.00	0.00
9,700.00	90.00	90.00	7,175.00	-171.31	2,545.57	2,548.59	0.00	0.00	0.00
9,800.00	90.00	90.00	7,175.00	-171.31	2,645.57	2,648.56	0.00	0.00	0.00
9,900.00	90.00	90.00	7,175.00	-171.31	2,745.57	2,748.54	0.00	0.00	0.00
10,000.00	90.00	90.00	7,175.00	-171.31	2,845.57	2,848.52	0.00	0.00	0.00
10,100.00	90.00	90.00	7,175.00	-171.31	2,945.57	2,948.50	0.00	0.00	0.00
10,200.00	90.00	90.00	7,175.00	-171.31	3,045.57	3,048.48	0.00	0.00	0.00
10,300.00	90.00	90.00	7,175.00	-171.31	3,145.57	3,148.46	0.00	0.00	0.00
10,400.00	90.00	90.00	7,175.00	-171.31	3,245.57	3,248.43	0.00	0.00	0.00
10,500.00	90.00	90.00	7,175.00	-171.31	3,345.57	3,348.41	0.00	0.00	0.00
10,600.00	90.00	90.00	7,175.00	-171.31	3,445.57	3,448.39	0.00	0.00	0.00
10,700.00	90.00	90.00	7,175.00	-171.31	3,545.57	3,548.37	0.00	0.00	0.00
10,800.00	90.00	90.00	7,175.00	-171.31	3,645.57	3,648.35	0.00	0.00	0.00
10,900.00	90.00	90.00	7,175.00	-171.31	3,745.57	3,748.33	0.00	0.00	0.00
11,000.00	90.00	90.00	7,175.00	-171.31	3,845.57	3,848.30	0.00	0.00	0.00
11,100.00	90.00	90.00	7,175.00	-171.30	3,945.57	3,948.28	0.00	0.00	0.00
11,200.00	90.00	90.00	7,175.00	-171.30	4,045.57	4,048.26	0.00	0.00	0.00
11,300.00	90.00	90.00	7,175.00	-171.30	4,145.57	4,148.24	0.00	0.00	0.00
11,400.00	90.00	90.00	7,175.00	-171.30	4,245.57	4,248.22	0.00	0.00	0.00
11,500.00	90.00	90.00	7,175.00	-171.30	4,345.57	4,348.20	0.00	0.00	0.00
11,600.00	90.00	90.00	7,175.00	-171.30	4,445.57	4,448.18	0.00	0.00	0.00
11,700.00	90.00	90.00	7,175.00	-171.30	4,545.57	4,548.15	0.00	0.00	0.00
11,800.00	90.00	90.00	7,175.00	-171.30	4,645.57	4,648.13	0.00	0.00	0.00
11,900.00	90.00	90.00	7,175.00	-171.30	4,745.57	4,748.11	0.00	0.00	0.00
12,000.00	90.00	90.00	7,175.00	-171.30	4,845.57	4,848.09	0.00	0.00	0.00
12,100.00	90.00	90.00	7,175.00	-171.30	4,945.57	4,948.07	0.00	0.00	0.00
12,200.00	90.00	90.00	7,175.00	-171.30	5,045.57	5,048.05	0.00	0.00	0.00
12,300.00	90.00	90.00	7,175.00	-171.30	5,145.57	5,148.02	0.00	0.00	0.00
12,400.00	90.00	90.00	7,175.00	-171.30	5,245.57	5,248.00	0.00	0.00	0.00
12,500.00	90.00	90.00	7,175.00	-171.30	5,345.57	5,347.98	0.00	0.00	0.00
12,600.00	90.00	90.00	7,175.00	-171.30	5,445.57	5,447.96	0.00	0.00	0.00
12,700.00	90.00	90.00	7,175.00	-171.30	5,545.57	5,547.94	0.00	0.00	0.00
12,800.00	90.00	90.00	7,175.00	-171.30	5,645.57	5,647.92	0.00	0.00	0.00
12,900.00	90.00	90.00	7,175.00	-171.30	5,745.57	5,747.89	0.00	0.00	0.00
13,000.00	90.00	90.00	7,175.00	-171.30	5,845.57	5,847.87	0.00	0.00	0.00
13,100.00	90.00	90.00	7,175.00	-171.30	5,945.57	5,947.85	0.00	0.00	0.00
13,200.00	90.00	90.00	7,175.00	-171.30	6,045.57	6,047.83	0.00	0.00	0.00
13,300.00	90.00	90.00	7,175.00	-171.30	6,145.57	6,147.81	0.00	0.00	0.00
13,400.00	90.00	90.00	7,175.00	-171.30	6,245.57	6,247.79	0.00	0.00	0.00
13,500.00	90.00	90.00	7,175.00	-171.30	6,345.57	6,347.76	0.00	0.00	0.00
13,600.00	90.00	90.00	7,175.00	-171.30	6,445.57	6,447.74	0.00	0.00	0.00
13,700.00	90.00	90.00	7,175.00	-171.30	6,545.57	6,547.72	0.00	0.00	0.00
13,800.00	90.00	90.00	7,175.00	-171.30	6,645.57	6,647.70	0.00	0.00	0.00
13,900.00	90.00	90.00	7,175.00	-171.30	6,745.57	6,747.68	0.00	0.00	0.00
14,000.00	90.00	90.00	7,175.00	-171.30	6,845.57	6,847.66	0.00	0.00	0.00
14,100.00	90.00	90.00	7,175.00	-171.30	6,945.57	6,947.63	0.00	0.00	0.00
14,200.00	90.00	90.00	7,175.00	-171.30	7,045.57	7,047.61	0.00	0.00	0.00
14,300.00	90.00	90.00	7,175.00	-171.30	7,145.57	7,147.59	0.00	0.00	0.00
14,400.00	90.00	90.00	7,175.00	-171.30	7,245.57	7,247.57	0.00	0.00	0.00
14,500.00	90.00	90.00	7,175.00	-171.30	7,345.57	7,347.55	0.00	0.00	0.00
14,600.00	90.00	90.00	7,175.00	-171.30	7,445.57	7,447.53	0.00	0.00	0.00
14,700.00	90.00	90.00	7,175.00	-171.30	7,545.57	7,547.50	0.00	0.00	0.00

<b>Database:</b>	Casper District	<b>Local Co-ordinate Reference:</b>	Well Fagerberg 23N-7C-M
<b>Company:</b>	Synergy Resources Corp.	<b>TVD Reference:</b>	GL 4800 & KB 20 @ 4820.00ft (PD 462)
<b>Project:</b>	Weld County, CO NAD 83	<b>MD Reference:</b>	GL 4800 & KB 20 @ 4820.00ft (PD 462)
<b>Site:</b>	SRC Fagerberg 13-12 Pad	<b>North Reference:</b>	True
<b>Well:</b>	Fagerberg 23N-7C-M	<b>Survey Calculation Method:</b>	Minimum Curvature
<b>Wellbore:</b>	OH		
<b>Design:</b>	Plan #2		

Planned Survey									
Measured Depth (ft)	Inclination (°)	Azimuth (°)	Vertical Depth (ft)	+N/-S (ft)	+E/-W (ft)	Vertical Section (ft)	Dogleg Rate (°/100ft)	Build Rate (°/100ft)	Turn Rate (°/100ft)
14,800.00	90.00	90.00	7,175.00	-171.30	7,645.57	7,647.48	0.00	0.00	0.00
14,900.00	90.00	90.00	7,175.00	-171.30	7,745.57	7,747.46	0.00	0.00	0.00
15,000.00	90.00	90.00	7,175.00	-171.30	7,845.57	7,847.44	0.00	0.00	0.00
15,100.00	90.00	90.00	7,175.00	-171.30	7,945.57	7,947.42	0.00	0.00	0.00
15,200.00	90.00	90.00	7,175.00	-171.30	8,045.57	8,047.40	0.00	0.00	0.00
15,300.00	90.00	90.00	7,175.00	-171.30	8,145.57	8,147.37	0.00	0.00	0.00
15,384.46	90.00	90.00	7,175.00	-171.30	8,230.03	8,231.82	0.00	0.00	0.00
TD at 15384.46 - 23N-7C-M(990 FSL 2120 FEL) PBHL									

Design Targets									
Target Name	Dip Angle (°)	Dip Dir. (°)	TVD (ft)	+N/-S (ft)	+E/-W (ft)	Northing (usft)	Easting (usft)	Latitude	Longitude
- hit/miss target									
- Shape									
23N-7C-M(990 FSL 2120)	0.00	0.00	7,175.00	-171.30	8,230.03	1,425,327.73	3,221,221.35	40.4982020	-104.7045350
- plan hits target center									
- Point									

Casing Points					
Measured Depth (ft)	Vertical Depth (ft)	Name	Casing Diameter (in)	Hole Diameter (in)	
1,713.71	1,700.00	9 5/8"	9.625	13.500	

Plan Annotations				
Measured Depth (ft)	Vertical Depth (ft)	Local Coordinates		Comment
		+N/-S (ft)	+E/-W (ft)	
300.00	300.00	0.00	0.00	Start Build 2.00
749.93	748.09	-23.96	-25.87	Start 1161.12 hold at 749.93 MD
1,911.05	1,894.91	-147.35	-159.13	Start Drop -2.00
2,360.99	2,343.00	-171.31	-185.00	Start 4311.13 hold at 2360.99 MD
6,672.12	6,654.13	-171.31	-185.00	Start DLS 11.00 TFO 90.00
7,490.30	7,175.00	-171.31	335.87	Start 7894.16 hold at 7490.30 MD
15,384.46	7,175.00	-171.30	8,230.03	TD at 15384.46