



## PROJECT DETAILS: Weld County, CO NAD 83

Geodetic System: US State Plane 1983  
Datum: North American Datum 1983  
Ellipsoid: GRS 1980  
Zone: Colorado Northern Zone  
System Datum: Mean Sea Level  
Local North: True

Project: Weld County, CO NAD 83  
Site: SRC Fagerberg 13-12 Pad  
Well: Fagerberg 25N(S)-7B-M  
Wellbore: OH  
Design: Plan #2



Azimuths to True North  
Magnetic North: 8.49°



Magnetic Field  
Strength: 52600.6snT  
Dip Angle: 67.03°  
Date: 2/17/2016  
Model: BGGM2015

## SECTION DETAILS

MD	Inc	Azi	TVD	+N/-S	+E/-W	Dleg	TFace	VSect
0.00	0.00	0.00	0.00	0.00	0.00	0.00	0.00	0.00
200.00	0.00	0.00	200.00	0.00	0.00	0.00	0.00	0.00
799.76	12.00	350.88	795.39	61.76	-9.91	2.00	350.88	-1.56
5510.85	12.00	350.88	5403.61	1028.49	-165.09	0.00	0.00	-25.90
6110.61	0.00	0.00	5999.00	1090.25	-175.00	2.00	180.00	-27.45
6692.74	0.00	0.00	6581.13	1090.25	-175.00	0.00	0.00	-27.45
7510.92	90.00	90.00	7102.00	1090.25	345.87	11.00	90.00	488.73
15233.91	90.00	90.00	7102.00	1090.23	8068.86	0.00	0.00	8142.18

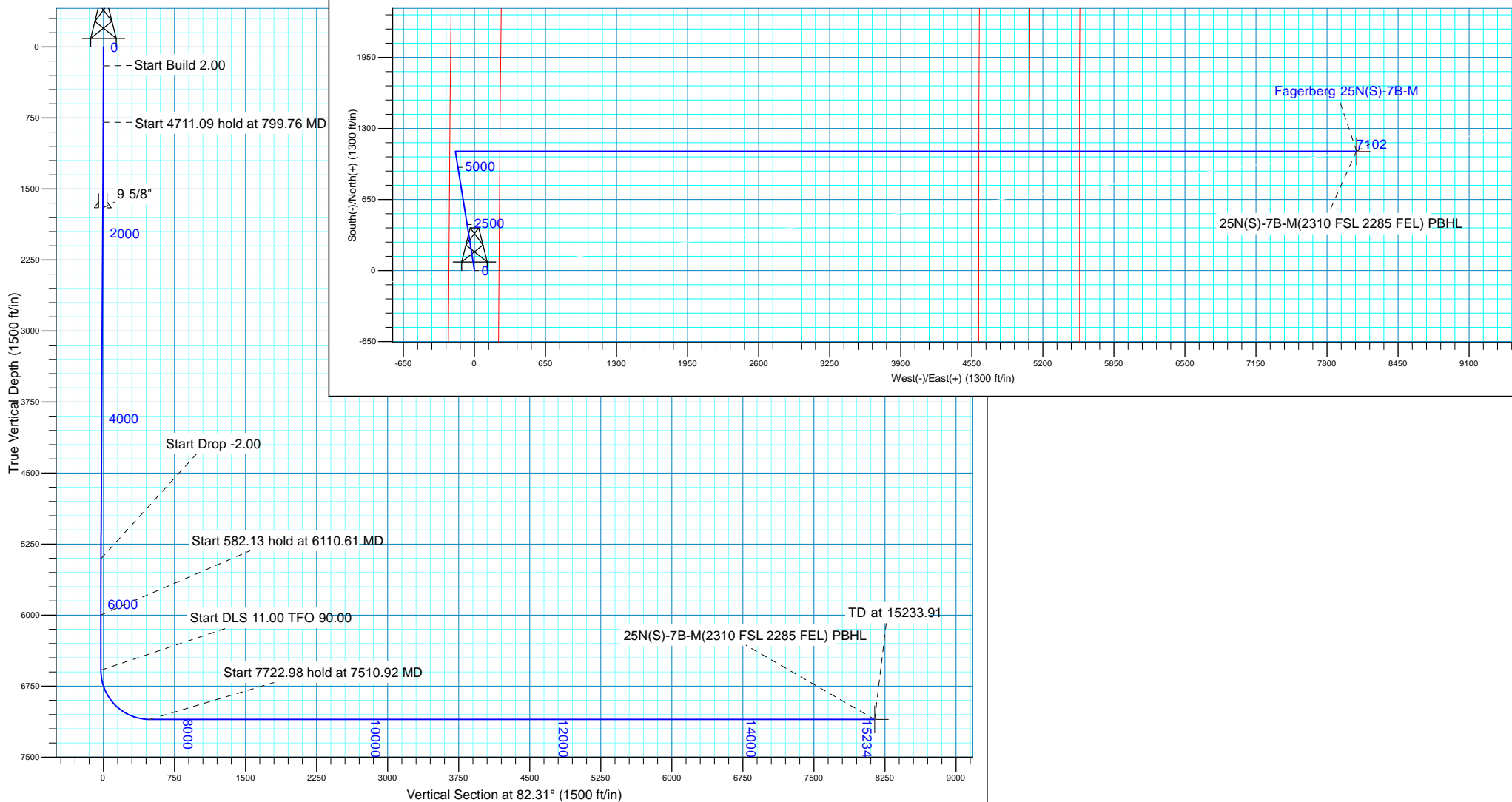
## WELL DETAILS: Fagerberg 25N(S)-7B-M

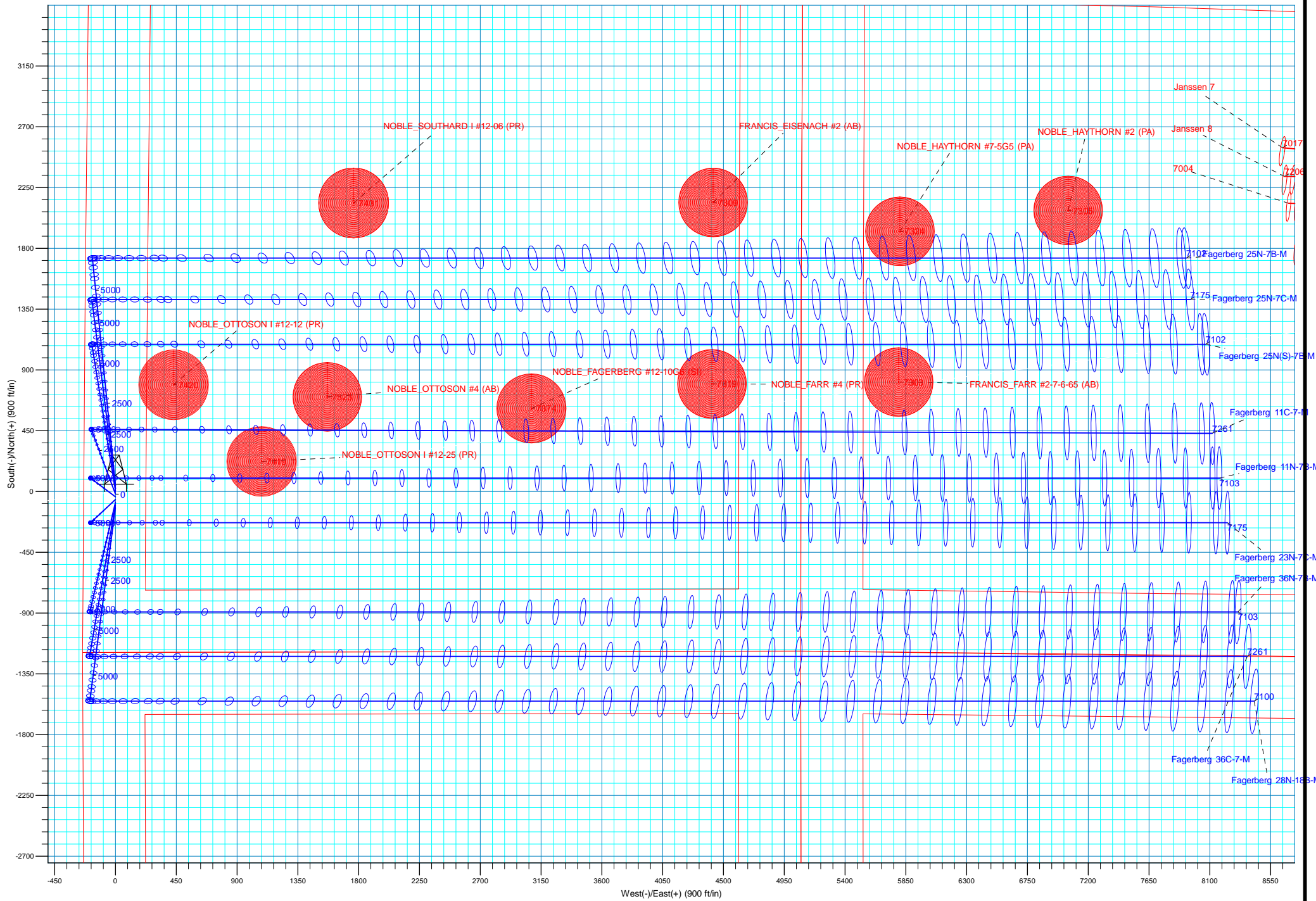
		GL 4800 & KB 20 @ 4820.00ft (PD 462)		4800.00	
+N/-S	+E/-W	Northing	Easting	Latitude	Longitude
0.00	0.00	1425488.05	3212989.92	40.4988410	-104.7341270

Plan: Plan #2 (Fagerberg 25N(S)-7B-M/OH)

## CASING DETAILS

Created By:	rscott	Date:	12:43, February 23 2016	TVD	MD	Name	Size
				1700.00	1724.56	9 5/8"	9.625





Plan: Plan #2 (Fagerberg 25N(S)-7B-M/OH)

Created By: rscott Date: 13:29, February 23 2016



## **Synergy Resources Corp.**

**Weld County, CO NAD 83  
SRC Fagerberg 13-12 Pad  
Fagerberg 25N(S)-7B-M**

**OH**

**Plan: Plan #2**

## **Standard Planning Report**

**23 February, 2016**



<b>Database:</b>	Casper District	<b>Local Co-ordinate Reference:</b>	Well Fagerberg 25N(S)-7B-M
<b>Company:</b>	Synergy Resources Corp.	<b>TVD Reference:</b>	GL 4800 & KB 20 @ 4820.00ft (PD 462)
<b>Project:</b>	Weld County, CO NAD 83	<b>MD Reference:</b>	GL 4800 & KB 20 @ 4820.00ft (PD 462)
<b>Site:</b>	SRC Fagerberg 13-12 Pad	<b>North Reference:</b>	True
<b>Well:</b>	Fagerberg 25N(S)-7B-M	<b>Survey Calculation Method:</b>	Minimum Curvature
<b>Wellbore:</b>	OH		
<b>Design:</b>	Plan #2		

<b>Project</b>	Weld County, CO NAD 83		
<b>Map System:</b>	US State Plane 1983	<b>System Datum:</b>	Mean Sea Level
<b>Geo Datum:</b>	North American Datum 1983		
<b>Map Zone:</b>	Colorado Northern Zone		

Site		SRC Fagerberg 13-12 Pad, SECTION 12 T6N R66W			
Site Position:		Northing:	1,425,367.83 usft	Latitude:	40.4985110
From:	Lat/Long	Easting:	3,212,990.12 usft	Longitude:	-104.7341300
Position Uncertainty:	3.28 ft	Slot Radius:	13.200 in	Grid Convergence:	0.49 °

Well	Fagerberg 25N(S)-7B-M, 1191 FSL 235 FWL					
Well Position	+N/-S	120.22 ft	Northing:	1,425,488.05 usft	Latitude:	40.4988410
	+E/-W	0.83 ft	Easting:	3,212,989.92 usft	Longitude:	-104.7341270
Position Uncertainty		3.28 ft	Wellhead Elevation:	0.00 ft	Ground Level:	4,800.00 ft

<b>Wellbore</b>	OH				
<b>Magnetics</b>	<b>Model Name</b>	<b>Sample Date</b>	<b>Declination (°)</b>	<b>Dip Angle (°)</b>	<b>Field Strength (nT)</b>
	BGGM2015	2/17/2016	8.49	67.03	52,601

<b>Design</b>	Plan #2			
<b>Audit Notes:</b>				
<b>Version:</b>	<b>Phase:</b>	PLAN	<b>Tie On Depth:</b>	0.00
<b>Vertical Section:</b>	<b>Depth From (TVD)</b>	<b>+N/-S</b>	<b>+E/-W</b>	<b>Direction</b>
	(ft)	(ft)	(ft)	(°)
	0.00	0.00	0.00	82.31

<b>Plan Sections</b>										
Measured Depth (ft)	Inclination (°)	Azimuth (°)	Vertical Depth (ft)	+N/-S (ft)	+E/-W (ft)	Dogleg Rate (°/100ft)	Build Rate (°/100ft)	Turn Rate (°/100ft)	TFO (°)	Target
0.00	0.00	0.00	0.00	0.00	0.00	0.00	0.00	0.00	0.00	
200.00	0.00	0.00	200.00	0.00	0.00	0.00	0.00	0.00	0.00	
799.76	12.00	350.88	795.39	61.76	-9.91	2.00	2.00	0.00	350.88	
5,510.85	12.00	350.88	5,403.61	1,028.49	-165.09	0.00	0.00	0.00	0.00	
6,110.61	0.00	0.00	5,999.00	1,090.25	-175.00	2.00	-2.00	0.00	180.00	
6,692.74	0.00	0.00	6,581.13	1,090.25	-175.00	0.00	0.00	0.00	0.00	
7,510.92	90.00	90.00	7,102.00	1,090.25	345.87	11.00	11.00	11.00	90.00	
15,233.91	90.00	90.00	7,102.00	1,090.23	8,068.86	0.00	0.00	0.00	0.00	25N(S)-7B-M(2310 FSL)

<b>Database:</b>	Casper District	<b>Local Co-ordinate Reference:</b>	Well Fagerberg 25N(S)-7B-M
<b>Company:</b>	Synergy Resources Corp.	<b>TVD Reference:</b>	GL 4800 & KB 20 @ 4820.00ft (PD 462)
<b>Project:</b>	Weld County, CO NAD 83	<b>MD Reference:</b>	GL 4800 & KB 20 @ 4820.00ft (PD 462)
<b>Site:</b>	SRC Fagerberg 13-12 Pad	<b>North Reference:</b>	True
<b>Well:</b>	Fagerberg 25N(S)-7B-M	<b>Survey Calculation Method:</b>	Minimum Curvature
<b>Wellbore:</b>	OH		
<b>Design:</b>	Plan #2		

Planned Survey									
Measured Depth (ft)	Inclination (°)	Azimuth (°)	Vertical Depth (ft)	+N/-S (ft)	+E/-W (ft)	Vertical Section (ft)	Dogleg Rate (°/100ft)	Build Rate (°/100ft)	Turn Rate (°/100ft)
0.00	0.00	0.00	0.00	0.00	0.00	0.00	0.00	0.00	0.00
100.00	0.00	0.00	100.00	0.00	0.00	0.00	0.00	0.00	0.00
200.00	0.00	0.00	200.00	0.00	0.00	0.00	0.00	0.00	0.00
Start Build 2.00									
300.00	2.00	350.88	299.98	1.72	-0.28	-0.04	2.00	2.00	0.00
400.00	4.00	350.88	399.84	6.89	-1.11	-0.17	2.00	2.00	0.00
500.00	6.00	350.88	499.45	15.50	-2.49	-0.39	2.00	2.00	0.00
600.00	8.00	350.88	598.70	27.53	-4.42	-0.69	2.00	2.00	0.00
700.00	10.00	350.88	697.47	42.97	-6.90	-1.08	2.00	2.00	0.00
799.76	12.00	350.88	795.39	61.76	-9.91	-1.56	2.00	2.00	0.00
Start 4711.09 hold at 799.76 MD									
800.00	12.00	350.88	795.62	61.81	-9.92	-1.56	0.00	0.00	0.00
900.00	12.00	350.88	893.44	82.33	-13.22	-2.07	0.00	0.00	0.00
1,000.00	12.00	350.88	991.26	102.85	-16.51	-2.59	0.00	0.00	0.00
1,100.00	12.00	350.88	1,089.07	123.37	-19.80	-3.11	0.00	0.00	0.00
1,200.00	12.00	350.88	1,186.89	143.89	-23.10	-3.62	0.00	0.00	0.00
1,300.00	12.00	350.88	1,284.71	164.41	-26.39	-4.14	0.00	0.00	0.00
1,400.00	12.00	350.88	1,382.52	184.93	-29.68	-4.66	0.00	0.00	0.00
1,500.00	12.00	350.88	1,480.34	205.45	-32.98	-5.17	0.00	0.00	0.00
1,600.00	12.00	350.88	1,578.16	225.97	-36.27	-5.69	0.00	0.00	0.00
1,700.00	12.00	350.88	1,675.97	246.49	-39.57	-6.21	0.00	0.00	0.00
1,724.56	12.00	350.88	1,700.00	251.53	-40.37	-6.33	0.00	0.00	0.00
9 5/8"									
1,800.00	12.00	350.88	1,773.79	267.01	-42.86	-6.72	0.00	0.00	0.00
1,900.00	12.00	350.88	1,871.60	287.53	-46.15	-7.24	0.00	0.00	0.00
2,000.00	12.00	350.88	1,969.42	308.05	-49.45	-7.76	0.00	0.00	0.00
2,100.00	12.00	350.88	2,067.24	328.57	-52.74	-8.27	0.00	0.00	0.00
2,200.00	12.00	350.88	2,165.05	349.09	-56.03	-8.79	0.00	0.00	0.00
2,300.00	12.00	350.88	2,262.87	369.61	-59.33	-9.31	0.00	0.00	0.00
2,400.00	12.00	350.88	2,360.69	390.13	-62.62	-9.82	0.00	0.00	0.00
2,500.00	12.00	350.88	2,458.50	410.66	-65.92	-10.34	0.00	0.00	0.00
2,600.00	12.00	350.88	2,556.32	431.18	-69.21	-10.86	0.00	0.00	0.00
2,700.00	12.00	350.88	2,654.14	451.70	-72.50	-11.37	0.00	0.00	0.00
2,800.00	12.00	350.88	2,751.95	472.22	-75.80	-11.89	0.00	0.00	0.00
2,900.00	12.00	350.88	2,849.77	492.74	-79.09	-12.41	0.00	0.00	0.00
3,000.00	12.00	350.88	2,947.59	513.26	-82.38	-12.92	0.00	0.00	0.00
3,100.00	12.00	350.88	3,045.40	533.78	-85.68	-13.44	0.00	0.00	0.00
3,200.00	12.00	350.88	3,143.22	554.30	-88.97	-13.96	0.00	0.00	0.00
3,300.00	12.00	350.88	3,241.04	574.82	-92.27	-14.47	0.00	0.00	0.00
3,400.00	12.00	350.88	3,338.85	595.34	-95.56	-14.99	0.00	0.00	0.00
3,500.00	12.00	350.88	3,436.67	615.86	-98.85	-15.51	0.00	0.00	0.00
3,600.00	12.00	350.88	3,534.49	636.38	-102.15	-16.02	0.00	0.00	0.00
3,700.00	12.00	350.88	3,632.30	656.90	-105.44	-16.54	0.00	0.00	0.00
3,800.00	12.00	350.88	3,730.12	677.42	-108.73	-17.06	0.00	0.00	0.00
3,900.00	12.00	350.88	3,827.94	697.94	-112.03	-17.57	0.00	0.00	0.00
4,000.00	12.00	350.88	3,925.75	718.46	-115.32	-18.09	0.00	0.00	0.00
4,100.00	12.00	350.88	4,023.57	738.98	-118.62	-18.61	0.00	0.00	0.00
4,200.00	12.00	350.88	4,121.38	759.50	-121.91	-19.12	0.00	0.00	0.00
4,300.00	12.00	350.88	4,219.20	780.02	-125.20	-19.64	0.00	0.00	0.00
4,400.00	12.00	350.88	4,317.02	800.54	-128.50	-20.16	0.00	0.00	0.00
4,500.00	12.00	350.88	4,414.83	821.06	-131.79	-20.67	0.00	0.00	0.00
4,600.00	12.00	350.88	4,512.65	841.58	-135.09	-21.19	0.00	0.00	0.00
4,700.00	12.00	350.88	4,610.47	862.10	-138.38	-21.71	0.00	0.00	0.00

<b>Database:</b>	Casper District	<b>Local Co-ordinate Reference:</b>	Well Fagerberg 25N(S)-7B-M
<b>Company:</b>	Synergy Resources Corp.	<b>TVD Reference:</b>	GL 4800 & KB 20 @ 4820.00ft (PD 462)
<b>Project:</b>	Weld County, CO NAD 83	<b>MD Reference:</b>	GL 4800 & KB 20 @ 4820.00ft (PD 462)
<b>Site:</b>	SRC Fagerberg 13-12 Pad	<b>North Reference:</b>	True
<b>Well:</b>	Fagerberg 25N(S)-7B-M	<b>Survey Calculation Method:</b>	Minimum Curvature
<b>Wellbore:</b>	OH		
<b>Design:</b>	Plan #2		

Planned Survey									
Measured Depth (ft)	Inclination (°)	Azimuth (°)	Vertical Depth (ft)	+N/-S (ft)	+E/-W (ft)	Vertical Section (ft)	Dogleg Rate (°/100ft)	Build Rate (°/100ft)	Turn Rate (°/100ft)
4,800.00	12.00	350.88	4,708.28	882.62	-141.67	-22.22	0.00	0.00	0.00
4,900.00	12.00	350.88	4,806.10	903.14	-144.97	-22.74	0.00	0.00	0.00
5,000.00	12.00	350.88	4,903.92	923.66	-148.26	-23.26	0.00	0.00	0.00
5,100.00	12.00	350.88	5,001.73	944.18	-151.55	-23.77	0.00	0.00	0.00
5,200.00	12.00	350.88	5,099.55	964.70	-154.85	-24.29	0.00	0.00	0.00
5,300.00	12.00	350.88	5,197.37	985.22	-158.14	-24.81	0.00	0.00	0.00
5,400.00	12.00	350.88	5,295.18	1,005.74	-161.44	-25.32	0.00	0.00	0.00
5,500.00	12.00	350.88	5,393.00	1,026.26	-164.73	-25.84	0.00	0.00	0.00
5,510.85	12.00	350.88	5,403.61	1,028.49	-165.09	-25.90	0.00	0.00	0.00
<b>Start Drop -2.00</b>									
5,600.00	10.21	350.88	5,491.09	1,045.44	-167.81	-26.32	2.00	-2.00	0.00
5,700.00	8.21	350.88	5,589.80	1,061.25	-170.34	-26.72	2.00	-2.00	0.00
5,800.00	6.21	350.88	5,689.00	1,073.64	-172.33	-27.03	2.00	-2.00	0.00
5,900.00	4.21	350.88	5,788.58	1,082.61	-173.77	-27.26	2.00	-2.00	0.00
6,000.00	2.21	350.88	5,888.42	1,088.14	-174.66	-27.40	2.00	-2.00	0.00
6,100.00	0.21	350.88	5,988.39	1,090.23	-175.00	-27.45	2.00	-2.00	0.00
6,110.61	0.00	0.00	5,999.00	1,090.25	-175.00	-27.45	2.00	-2.00	0.00
<b>Start 582.13 hold at 6110.61 MD</b>									
6,200.00	0.00	0.00	6,088.39	1,090.25	-175.00	-27.45	0.00	0.00	0.00
6,300.00	0.00	0.00	6,188.39	1,090.25	-175.00	-27.45	0.00	0.00	0.00
6,400.00	0.00	0.00	6,288.39	1,090.25	-175.00	-27.45	0.00	0.00	0.00
6,500.00	0.00	0.00	6,388.39	1,090.25	-175.00	-27.45	0.00	0.00	0.00
6,600.00	0.00	0.00	6,488.39	1,090.25	-175.00	-27.45	0.00	0.00	0.00
6,692.74	0.00	0.00	6,581.13	1,090.25	-175.00	-27.45	0.00	0.00	0.00
<b>Start DLS 11.00 TFO 90.00</b>									
6,700.00	0.80	90.00	6,588.39	1,090.25	-174.95	-27.40	11.00	11.00	0.00
6,800.00	11.80	90.00	6,687.63	1,090.25	-164.00	-16.54	11.00	11.00	0.00
6,900.00	22.80	90.00	6,782.96	1,090.25	-134.31	12.88	11.00	11.00	0.00
7,000.00	33.80	90.00	6,870.88	1,090.25	-86.97	59.79	11.00	11.00	0.00
7,100.00	44.80	90.00	6,948.15	1,090.25	-23.73	122.46	11.00	11.00	0.00
7,200.00	55.80	90.00	7,011.93	1,090.25	53.09	198.58	11.00	11.00	0.00
7,300.00	66.80	90.00	7,059.88	1,090.25	140.67	285.37	11.00	11.00	0.00
7,400.00	77.80	90.00	7,090.24	1,090.25	235.79	379.64	11.00	11.00	0.00
7,500.00	88.80	90.00	7,101.89	1,090.25	334.95	477.91	11.00	11.00	0.00
7,510.92	90.00	90.00	7,102.00	1,090.25	345.87	488.73	11.00	11.00	0.00
<b>Start 7722.98 hold at 7510.92 MD</b>									
7,600.00	90.00	90.00	7,102.00	1,090.25	434.95	577.01	0.00	0.00	0.00
7,700.00	90.00	90.00	7,102.00	1,090.25	534.95	676.11	0.00	0.00	0.00
7,800.00	90.00	90.00	7,102.00	1,090.25	634.95	775.21	0.00	0.00	0.00
7,900.00	90.00	90.00	7,102.00	1,090.25	734.95	874.31	0.00	0.00	0.00
8,000.00	90.00	90.00	7,102.00	1,090.25	834.95	973.41	0.00	0.00	0.00
8,100.00	90.00	90.00	7,102.00	1,090.25	934.95	1,072.51	0.00	0.00	0.00
8,200.00	90.00	90.00	7,102.00	1,090.25	1,034.95	1,171.60	0.00	0.00	0.00
8,300.00	90.00	90.00	7,102.00	1,090.25	1,134.95	1,270.70	0.00	0.00	0.00
8,400.00	90.00	90.00	7,102.00	1,090.25	1,234.95	1,369.80	0.00	0.00	0.00
8,500.00	90.00	90.00	7,102.00	1,090.25	1,334.95	1,468.90	0.00	0.00	0.00
8,600.00	90.00	90.00	7,102.00	1,090.25	1,434.95	1,568.00	0.00	0.00	0.00
8,700.00	90.00	90.00	7,102.00	1,090.25	1,534.95	1,667.10	0.00	0.00	0.00
8,800.00	90.00	90.00	7,102.00	1,090.25	1,634.95	1,766.20	0.00	0.00	0.00
8,900.00	90.00	90.00	7,102.00	1,090.25	1,734.95	1,865.30	0.00	0.00	0.00
9,000.00	90.00	90.00	7,102.00	1,090.25	1,834.95	1,964.40	0.00	0.00	0.00
9,100.00	90.00	90.00	7,102.00	1,090.25	1,934.95	2,063.50	0.00	0.00	0.00
9,200.00	90.00	90.00	7,102.00	1,090.24	2,034.95	2,162.60	0.00	0.00	0.00
9,300.00	90.00	90.00	7,102.00	1,090.24	2,134.95	2,261.70	0.00	0.00	0.00

<b>Database:</b>	Casper District	<b>Local Co-ordinate Reference:</b>	Well Fagerberg 25N(S)-7B-M
<b>Company:</b>	Synergy Resources Corp.	<b>TVD Reference:</b>	GL 4800 & KB 20 @ 4820.00ft (PD 462)
<b>Project:</b>	Weld County, CO NAD 83	<b>MD Reference:</b>	GL 4800 & KB 20 @ 4820.00ft (PD 462)
<b>Site:</b>	SRC Fagerberg 13-12 Pad	<b>North Reference:</b>	True
<b>Well:</b>	Fagerberg 25N(S)-7B-M	<b>Survey Calculation Method:</b>	Minimum Curvature
<b>Wellbore:</b>	OH		
<b>Design:</b>	Plan #2		

Planned Survey									
Measured Depth (ft)	Inclination (°)	Azimuth (°)	Vertical Depth (ft)	+N/-S (ft)	+E/-W (ft)	Vertical Section (ft)	Dogleg Rate (°/100ft)	Build Rate (°/100ft)	Turn Rate (°/100ft)
9,400.00	90.00	90.00	7,102.00	1,090.24	2,234.95	2,360.80	0.00	0.00	0.00
9,500.00	90.00	90.00	7,102.00	1,090.24	2,334.95	2,459.90	0.00	0.00	0.00
9,600.00	90.00	90.00	7,102.00	1,090.24	2,434.95	2,559.00	0.00	0.00	0.00
9,700.00	90.00	90.00	7,102.00	1,090.24	2,534.95	2,658.10	0.00	0.00	0.00
9,800.00	90.00	90.00	7,102.00	1,090.24	2,634.95	2,757.20	0.00	0.00	0.00
9,900.00	90.00	90.00	7,102.00	1,090.24	2,734.95	2,856.30	0.00	0.00	0.00
10,000.00	90.00	90.00	7,102.00	1,090.24	2,834.95	2,955.40	0.00	0.00	0.00
10,100.00	90.00	90.00	7,102.00	1,090.24	2,934.95	3,054.50	0.00	0.00	0.00
10,200.00	90.00	90.00	7,102.00	1,090.24	3,034.95	3,153.60	0.00	0.00	0.00
10,300.00	90.00	90.00	7,102.00	1,090.24	3,134.95	3,252.70	0.00	0.00	0.00
10,400.00	90.00	90.00	7,102.00	1,090.24	3,234.95	3,351.80	0.00	0.00	0.00
10,500.00	90.00	90.00	7,102.00	1,090.24	3,334.95	3,450.90	0.00	0.00	0.00
10,600.00	90.00	90.00	7,102.00	1,090.24	3,434.95	3,549.99	0.00	0.00	0.00
10,700.00	90.00	90.00	7,102.00	1,090.24	3,534.95	3,649.09	0.00	0.00	0.00
10,800.00	90.00	90.00	7,102.00	1,090.24	3,634.95	3,748.19	0.00	0.00	0.00
10,900.00	90.00	90.00	7,102.00	1,090.24	3,734.95	3,847.29	0.00	0.00	0.00
11,000.00	90.00	90.00	7,102.00	1,090.24	3,834.95	3,946.39	0.00	0.00	0.00
11,100.00	90.00	90.00	7,102.00	1,090.24	3,934.95	4,045.49	0.00	0.00	0.00
11,200.00	90.00	90.00	7,102.00	1,090.24	4,034.95	4,144.59	0.00	0.00	0.00
11,300.00	90.00	90.00	7,102.00	1,090.24	4,134.95	4,243.69	0.00	0.00	0.00
11,400.00	90.00	90.00	7,102.00	1,090.24	4,234.95	4,342.79	0.00	0.00	0.00
11,500.00	90.00	90.00	7,102.00	1,090.24	4,334.95	4,441.89	0.00	0.00	0.00
11,600.00	90.00	90.00	7,102.00	1,090.24	4,434.95	4,540.99	0.00	0.00	0.00
11,700.00	90.00	90.00	7,102.00	1,090.24	4,534.95	4,640.09	0.00	0.00	0.00
11,800.00	90.00	90.00	7,102.00	1,090.24	4,634.95	4,739.19	0.00	0.00	0.00
11,900.00	90.00	90.00	7,102.00	1,090.24	4,734.95	4,838.29	0.00	0.00	0.00
12,000.00	90.00	90.00	7,102.00	1,090.24	4,834.95	4,937.39	0.00	0.00	0.00
12,100.00	90.00	90.00	7,102.00	1,090.24	4,934.95	5,036.49	0.00	0.00	0.00
12,200.00	90.00	90.00	7,102.00	1,090.24	5,034.95	5,135.59	0.00	0.00	0.00
12,300.00	90.00	90.00	7,102.00	1,090.24	5,134.95	5,234.69	0.00	0.00	0.00
12,400.00	90.00	90.00	7,102.00	1,090.24	5,234.95	5,333.79	0.00	0.00	0.00
12,500.00	90.00	90.00	7,102.00	1,090.24	5,334.95	5,432.89	0.00	0.00	0.00
12,600.00	90.00	90.00	7,102.00	1,090.24	5,434.95	5,531.99	0.00	0.00	0.00
12,700.00	90.00	90.00	7,102.00	1,090.24	5,534.95	5,631.09	0.00	0.00	0.00
12,800.00	90.00	90.00	7,102.00	1,090.24	5,634.95	5,730.19	0.00	0.00	0.00
12,900.00	90.00	90.00	7,102.00	1,090.24	5,734.95	5,829.29	0.00	0.00	0.00
13,000.00	90.00	90.00	7,102.00	1,090.24	5,834.95	5,928.39	0.00	0.00	0.00
13,100.00	90.00	90.00	7,102.00	1,090.24	5,934.95	6,027.48	0.00	0.00	0.00
13,200.00	90.00	90.00	7,102.00	1,090.24	6,034.95	6,126.58	0.00	0.00	0.00
13,300.00	90.00	90.00	7,102.00	1,090.24	6,134.95	6,225.68	0.00	0.00	0.00
13,400.00	90.00	90.00	7,102.00	1,090.24	6,234.95	6,324.78	0.00	0.00	0.00
13,500.00	90.00	90.00	7,102.00	1,090.24	6,334.95	6,423.88	0.00	0.00	0.00
13,600.00	90.00	90.00	7,102.00	1,090.23	6,434.95	6,522.98	0.00	0.00	0.00
13,700.00	90.00	90.00	7,102.00	1,090.23	6,534.95	6,622.08	0.00	0.00	0.00
13,800.00	90.00	90.00	7,102.00	1,090.23	6,634.95	6,721.18	0.00	0.00	0.00
13,900.00	90.00	90.00	7,102.00	1,090.23	6,734.95	6,820.28	0.00	0.00	0.00
14,000.00	90.00	90.00	7,102.00	1,090.23	6,834.95	6,919.38	0.00	0.00	0.00
14,100.00	90.00	90.00	7,102.00	1,090.23	6,934.95	7,018.48	0.00	0.00	0.00
14,200.00	90.00	90.00	7,102.00	1,090.23	7,034.95	7,117.58	0.00	0.00	0.00
14,300.00	90.00	90.00	7,102.00	1,090.23	7,134.95	7,216.68	0.00	0.00	0.00
14,400.00	90.00	90.00	7,102.00	1,090.23	7,234.95	7,315.78	0.00	0.00	0.00
14,500.00	90.00	90.00	7,102.00	1,090.23	7,334.95	7,414.88	0.00	0.00	0.00
14,600.00	90.00	90.00	7,102.00	1,090.23	7,434.95	7,513.98	0.00	0.00	0.00
14,700.00	90.00	90.00	7,102.00	1,090.23	7,534.95	7,613.08	0.00	0.00	0.00



<b>Database:</b>	Casper District	<b>Local Co-ordinate Reference:</b>	Well Fagerberg 25N(S)-7B-M
<b>Company:</b>	Synergy Resources Corp.	<b>TVD Reference:</b>	GL 4800 & KB 20 @ 4820.00ft (PD 462)
<b>Project:</b>	Weld County, CO NAD 83	<b>MD Reference:</b>	GL 4800 & KB 20 @ 4820.00ft (PD 462)
<b>Site:</b>	SRC Fagerberg 13-12 Pad	<b>North Reference:</b>	True
<b>Well:</b>	Fagerberg 25N(S)-7B-M	<b>Survey Calculation Method:</b>	Minimum Curvature
<b>Wellbore:</b>	OH		
<b>Design:</b>	Plan #2		

Planned Survey									
Measured Depth (ft)	Inclination (°)	Azimuth (°)	Vertical Depth (ft)	+N/-S (ft)	+E/-W (ft)	Vertical Section (ft)	Dogleg Rate (°/100ft)	Build Rate (°/100ft)	Turn Rate (°/100ft)
14,800.00	90.00	90.00	7,102.00	1,090.23	7,634.95	7,712.18	0.00	0.00	0.00
14,900.00	90.00	90.00	7,102.00	1,090.23	7,734.95	7,811.28	0.00	0.00	0.00
15,000.00	90.00	90.00	7,102.00	1,090.23	7,834.95	7,910.38	0.00	0.00	0.00
15,100.00	90.00	90.00	7,102.00	1,090.23	7,934.95	8,009.48	0.00	0.00	0.00
15,200.00	90.00	90.00	7,102.00	1,090.23	8,034.95	8,108.58	0.00	0.00	0.00
15,233.91	90.00	90.00	7,102.00	1,090.23	8,068.86	8,142.18	0.00	0.00	0.00
TD at 15233.91 - 25N(S)-7B-M(2310 FSL 2285 FEL) PBHL									

Design Targets									
Target Name - hit/miss target - Shape	Dip Angle (°)	Dip Dir. (°)	TVD (ft)	+N/-S (ft)	+E/-W (ft)	Northing (usft)	Easting (usft)	Latitude	Longitude
25N(S)-7B-M(2310 FSL - plan hits target center - Point	0.00	0.00	7,102.00	1,090.23	8,068.86	1,426,647.93	3,221,049.04	40.5018300	-104.7051120

Casing Points					
Measured Depth (ft)	Vertical Depth (ft)	Name		Casing Diameter (in)	Hole Diameter (in)
1,724.56	1,700.00	9 5/8"		9.625	13.500

Plan Annotations				
Measured Depth (ft)	Vertical Depth (ft)	Local Coordinates		Comment
		+N/-S (ft)	+E/-W (ft)	
200.00	200.00	0.00	0.00	Start Build 2.00
799.76	795.39	61.76	-9.91	Start 4711.09 hold at 799.76 MD
5,510.85	5,403.61	1,028.49	-165.09	Start Drop -2.00
6,110.61	5,999.00	1,090.25	-175.00	Start 582.13 hold at 6110.61 MD
6,692.74	6,581.13	1,090.25	-175.00	Start DLS 11.00 TFO 90.00
7,510.92	7,102.00	1,090.25	345.87	Start 7722.98 hold at 7510.92 MD
15,233.91	7,102.00	1,090.23	8,068.86	TD at 15233.91