



PROJECT DETAILS: Weld County, CO NAD 83

Geodetic System: US State Plane 1983
Datum: North American Datum 1983
Ellipsoid: GRS 1980
Zone: Colorado Northern Zone
System Datum: Mean Sea Level
Local North: True

Project: Weld County, CO NAD 83
Site: SRC Fagerberg 13-12 Pad
Well: Fagerberg 25N-7B-M
Wellbore: OH
Design: Plan #2



Azimuths to True North
Magnetic North: 8.49°



Magnetic Field
Strength: 52600.7nT
Dip Angle: 67.03°
Date: 2/17/2016
Model: BGGM2015

SECTION DETAILS

MD	Inc	Azi	TVD	+N/-S	+E/-W	Dleg	TFace	VSect
0.00	0.00	0.00	0.00	0.00	0.00	0.00	0.00	0.00
200.00	0.00	0.00	200.00	0.00	0.00	0.00	0.00	0.00
1129.50	18.59	354.21	1113.28	148.71	-15.08	2.00	354.21	16.23
5512.78	18.59	354.21	5267.85	1538.95	-156.02	0.00	0.00	167.92
6442.28	0.00	0.00	6181.13	1687.66	-171.10	2.00	180.00	184.14
6842.28	0.00	0.00	6581.13	1687.66	-171.10	0.00	0.00	184.14
7660.46	90.00	90.00	7102.00	1687.66	349.77	11.00	90.00	693.59
15236.12	90.00	90.00	7102.00	1687.65	7925.43	0.00	0.00	8103.13

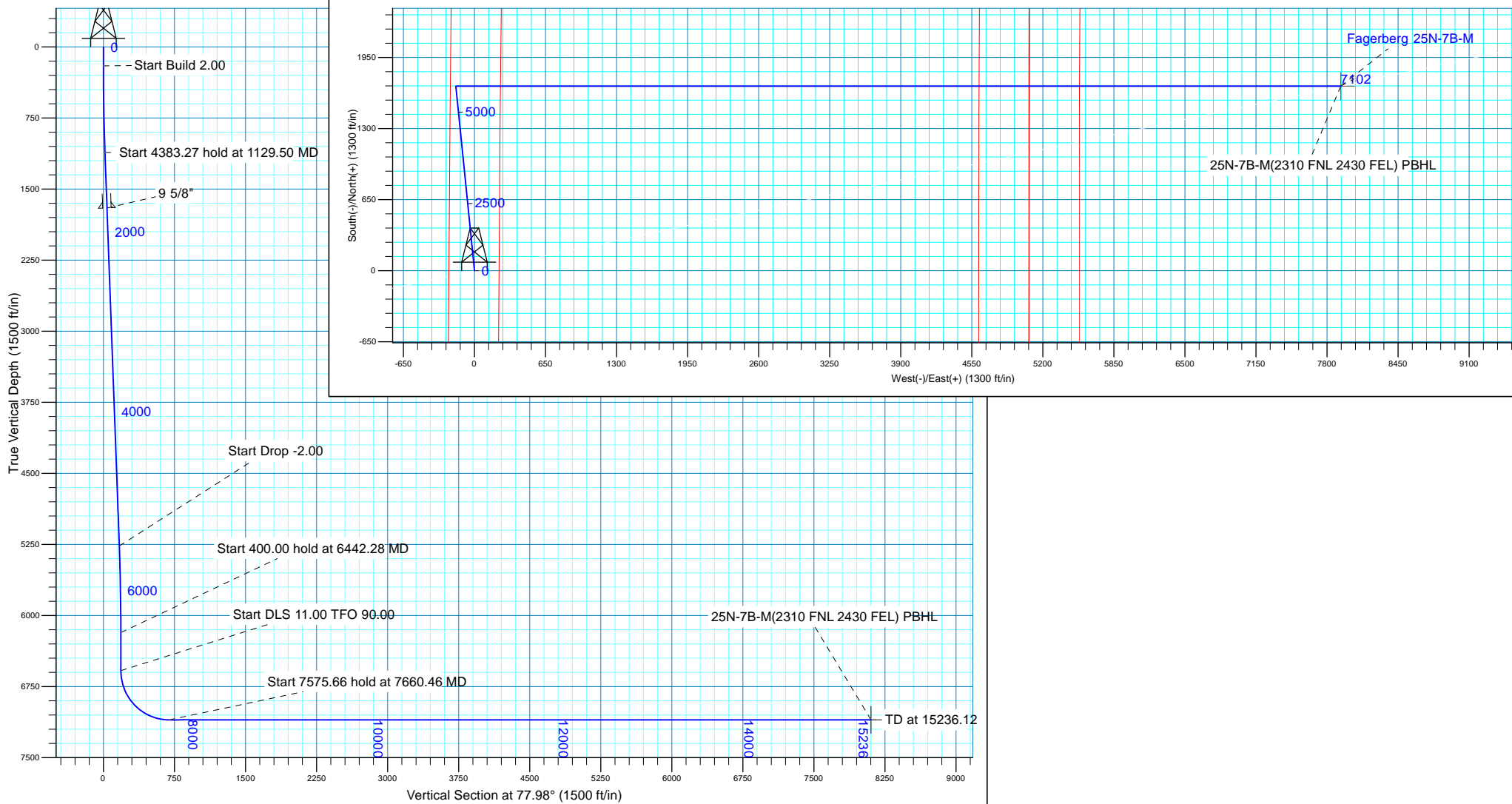
WELL DETAILS: Fagerberg 25N-7B-M

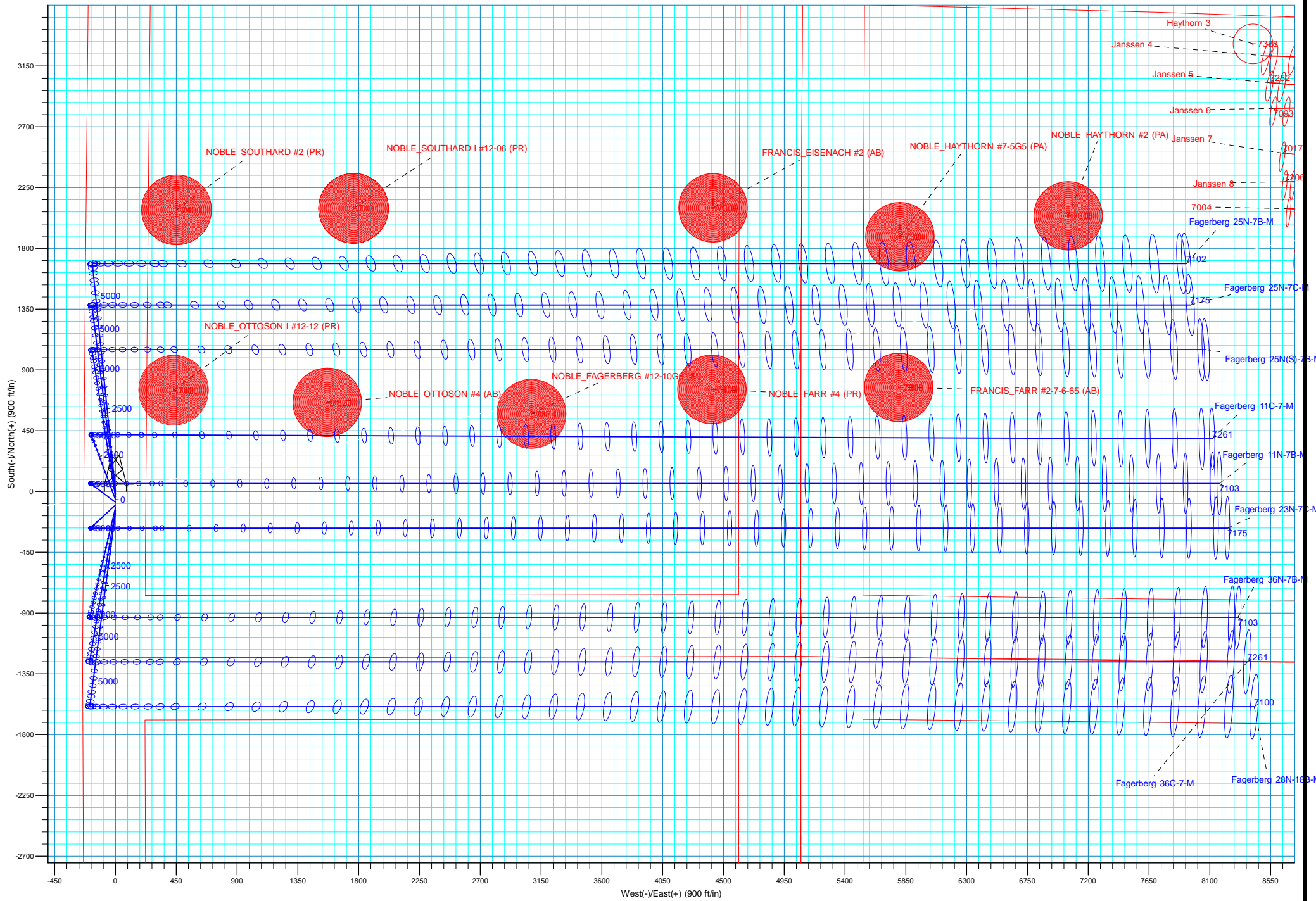
		GL 4800 & KB 20 @ 4820.00ft (PD 462)		4800.00	
+N/-S	+E/-W	Northing	Easting	Latitude	Longitude
0.00	0.00	1425528.13	3212989.85	40.4989510	-104.7341260

Plan: Plan #2 (Fagerberg 25N-7B-M/OH)

CASING DETAILS

Created By: rscott	Date: 12:40, February 23 2016	TVD	MD	Name	Size
		1700.00	748.52	9 5/8"	9.625







Synergy Resources Corp.

Weld County, CO NAD 83
SRC Fagerberg 13-12 Pad
Fagerberg 25N-7B-M

OH

Plan: Plan #2

Standard Planning Report

23 February, 2016



Database:	Casper District	Local Co-ordinate Reference:	Well Fagerberg 25N-7B-M
Company:	Synergy Resources Corp.	TVD Reference:	GL 4800 & KB 20 @ 4820.00ft (PD 462)
Project:	Weld County, CO NAD 83	MD Reference:	GL 4800 & KB 20 @ 4820.00ft (PD 462)
Site:	SRC Fagerberg 13-12 Pad	North Reference:	True
Well:	Fagerberg 25N-7B-M	Survey Calculation Method:	Minimum Curvature
Wellbore:	OH		
Design:	Plan #2		

Project	Weld County, CO NAD 83		
Map System:	US State Plane 1983	System Datum:	Mean Sea Level
Geo Datum:	North American Datum 1983		
Map Zone:	Colorado Northern Zone		

Site		SRC Fagerberg 13-12 Pad, SECTION 12 T6N R66W			
Site Position:		Northing:	1,425,367.83 usft	Latitude:	40.4985110
From:	Lat/Long	Easting:	3,212,990.12 usft	Longitude:	-104.7341300
Position Uncertainty:	3.28 ft	Slot Radius:	13.200 in	Grid Convergence:	0.49 °

Well	Fagerberg 25N-7B-M, 1231 FSL 235 FWL					
Well Position	+N/-S	160.29 ft	Northing:	1,425,528.13 usft	Latitude:	40.4989510
	+E/-W	1.11 ft	Easting:	3,212,989.85 usft	Longitude:	-104.7341260
Position Uncertainty		3.28 ft	Wellhead Elevation:	0.00 ft	Ground Level:	4,800.00 ft

Wellbore	OH				
Magnetics	Model Name	Sample Date	Declination (°)	Dip Angle (°)	Field Strength (nT)
	BGGM2015	2/17/2016	8.49	67.03	52,601

Design	Plan #2			
Audit Notes:				
Version:	Phase:	PLAN	Tie On Depth:	0.00
Vertical Section:	Depth From (TVD)	+N/-S	+E/-W	Direction
	(ft)	(ft)	(ft)	(°)
	0.00	0.00	0.00	77.98

Plan Sections										
Measured Depth (ft)	Inclination (°)	Azimuth (°)	Vertical Depth (ft)	+N/-S (ft)	+E/-W (ft)	Dogleg Rate (°/100ft)	Build Rate (°/100ft)	Turn Rate (°/100ft)	TFO (°)	Target
0.00	0.00	0.00	0.00	0.00	0.00	0.00	0.00	0.00	0.00	
200.00	0.00	0.00	200.00	0.00	0.00	0.00	0.00	0.00	0.00	
1,129.50	18.59	354.21	1,113.28	148.71	-15.08	2.00	2.00	0.00	354.21	
5,512.78	18.59	354.21	5,267.85	1,538.95	-156.02	0.00	0.00	0.00	0.00	
6,442.28	0.00	0.00	6,181.13	1,687.66	-171.10	2.00	-2.00	0.00	180.00	
6,842.28	0.00	0.00	6,581.13	1,687.66	-171.10	0.00	0.00	0.00	0.00	
7,660.46	90.00	90.00	7,102.00	1,687.66	349.77	11.00	11.00	11.00	90.00	
15,236.12	90.00	90.00	7,102.00	1,687.65	7,925.43	0.00	0.00	0.00	0.00	25N-7B-M(2310 FNL)

Database:	Casper District	Local Co-ordinate Reference:	Well Fagerberg 25N-7B-M
Company:	Synergy Resources Corp.	TVD Reference:	GL 4800 & KB 20 @ 4820.00ft (PD 462)
Project:	Weld County, CO NAD 83	MD Reference:	GL 4800 & KB 20 @ 4820.00ft (PD 462)
Site:	SRC Fagerberg 13-12 Pad	North Reference:	True
Well:	Fagerberg 25N-7B-M	Survey Calculation Method:	Minimum Curvature
Wellbore:	OH		
Design:	Plan #2		

Planned Survey									
Measured Depth (ft)	Inclination (°)	Azimuth (°)	Vertical Depth (ft)	+N/-S (ft)	+E/-W (ft)	Vertical Section (ft)	Dogleg Rate (°/100ft)	Build Rate (°/100ft)	Turn Rate (°/100ft)
0.00	0.00	0.00	0.00	0.00	0.00	0.00	0.00	0.00	0.00
100.00	0.00	0.00	100.00	0.00	0.00	0.00	0.00	0.00	0.00
200.00	0.00	0.00	200.00	0.00	0.00	0.00	0.00	0.00	0.00
Start Build 2.00									
300.00	2.00	354.21	299.98	1.74	-0.18	0.19	2.00	2.00	0.00
400.00	4.00	354.21	399.84	6.94	-0.70	0.76	2.00	2.00	0.00
500.00	6.00	354.21	499.45	15.61	-1.58	1.70	2.00	2.00	0.00
600.00	8.00	354.21	598.70	27.74	-2.81	3.03	2.00	2.00	0.00
700.00	10.00	354.21	697.47	43.30	-4.39	4.72	2.00	2.00	0.00
800.00	12.00	354.21	795.62	62.28	-6.31	6.80	2.00	2.00	0.00
900.00	14.00	354.21	893.06	84.66	-8.58	9.24	2.00	2.00	0.00
1,000.00	16.00	354.21	989.64	110.41	-11.19	12.05	2.00	2.00	0.00
1,100.00	18.00	354.21	1,085.27	139.50	-14.14	15.22	2.00	2.00	0.00
1,129.50	18.59	354.21	1,113.28	148.71	-15.08	16.23	2.00	2.00	0.00
Start 4383.27 hold at 1129.50 MD									
1,200.00	18.59	354.21	1,180.10	171.07	-17.34	18.67	0.00	0.00	0.00
1,300.00	18.59	354.21	1,274.88	202.79	-20.56	22.13	0.00	0.00	0.00
1,400.00	18.59	354.21	1,369.66	234.50	-23.77	25.59	0.00	0.00	0.00
1,500.00	18.59	354.21	1,464.45	266.22	-26.99	29.05	0.00	0.00	0.00
1,600.00	18.59	354.21	1,559.23	297.94	-30.21	32.51	0.00	0.00	0.00
1,700.00	18.59	354.21	1,654.01	329.66	-33.42	35.97	0.00	0.00	0.00
1,748.52	18.59	354.21	1,700.00	345.04	-34.98	37.65	0.00	0.00	0.00
9 5/8"									
1,800.00	18.59	354.21	1,748.79	361.37	-36.64	39.43	0.00	0.00	0.00
1,900.00	18.59	354.21	1,843.58	393.09	-39.85	42.89	0.00	0.00	0.00
2,000.00	18.59	354.21	1,938.36	424.81	-43.07	46.35	0.00	0.00	0.00
2,100.00	18.59	354.21	2,033.14	456.52	-46.28	49.81	0.00	0.00	0.00
2,200.00	18.59	354.21	2,127.92	488.24	-49.50	53.27	0.00	0.00	0.00
2,300.00	18.59	354.21	2,222.71	519.96	-52.71	56.73	0.00	0.00	0.00
2,400.00	18.59	354.21	2,317.49	551.67	-55.93	60.19	0.00	0.00	0.00
2,500.00	18.59	354.21	2,412.27	583.39	-59.15	63.65	0.00	0.00	0.00
2,600.00	18.59	354.21	2,507.05	615.11	-62.36	67.12	0.00	0.00	0.00
2,700.00	18.59	354.21	2,601.83	646.82	-65.58	70.58	0.00	0.00	0.00
2,800.00	18.59	354.21	2,696.62	678.54	-68.79	74.04	0.00	0.00	0.00
2,900.00	18.59	354.21	2,791.40	710.26	-72.01	77.50	0.00	0.00	0.00
3,000.00	18.59	354.21	2,886.18	741.97	-75.22	80.96	0.00	0.00	0.00
3,100.00	18.59	354.21	2,980.96	773.69	-78.44	84.42	0.00	0.00	0.00
3,200.00	18.59	354.21	3,075.75	805.41	-81.65	87.88	0.00	0.00	0.00
3,300.00	18.59	354.21	3,170.53	837.13	-84.87	91.34	0.00	0.00	0.00
3,400.00	18.59	354.21	3,265.31	868.84	-88.09	94.80	0.00	0.00	0.00
3,500.00	18.59	354.21	3,360.09	900.56	-91.30	98.26	0.00	0.00	0.00
3,600.00	18.59	354.21	3,454.88	932.28	-94.52	101.72	0.00	0.00	0.00
3,700.00	18.59	354.21	3,549.66	963.99	-97.73	105.18	0.00	0.00	0.00
3,800.00	18.59	354.21	3,644.44	995.71	-100.95	108.64	0.00	0.00	0.00
3,900.00	18.59	354.21	3,739.22	1,027.43	-104.16	112.10	0.00	0.00	0.00
4,000.00	18.59	354.21	3,834.01	1,059.14	-107.38	115.56	0.00	0.00	0.00
4,100.00	18.59	354.21	3,928.79	1,090.86	-110.59	119.03	0.00	0.00	0.00
4,200.00	18.59	354.21	4,023.57	1,122.58	-113.81	122.49	0.00	0.00	0.00
4,300.00	18.59	354.21	4,118.35	1,154.29	-117.03	125.95	0.00	0.00	0.00
4,400.00	18.59	354.21	4,213.14	1,186.01	-120.24	129.41	0.00	0.00	0.00
4,500.00	18.59	354.21	4,307.92	1,217.73	-123.46	132.87	0.00	0.00	0.00
4,600.00	18.59	354.21	4,402.70	1,249.44	-126.67	136.33	0.00	0.00	0.00
4,700.00	18.59	354.21	4,497.48	1,281.16	-129.89	139.79	0.00	0.00	0.00

Database:	Casper District	Local Co-ordinate Reference:	Well Fagerberg 25N-7B-M
Company:	Synergy Resources Corp.	TVD Reference:	GL 4800 & KB 20 @ 4820.00ft (PD 462)
Project:	Weld County, CO NAD 83	MD Reference:	GL 4800 & KB 20 @ 4820.00ft (PD 462)
Site:	SRC Fagerberg 13-12 Pad	North Reference:	True
Well:	Fagerberg 25N-7B-M	Survey Calculation Method:	Minimum Curvature
Wellbore:	OH		
Design:	Plan #2		

Planned Survey										
Measured Depth (ft)	Inclination (°)	Azimuth (°)	Vertical Depth (ft)	+N/-S (ft)	+E/-W (ft)	Vertical Section (ft)	Dogleg Rate (°/100ft)	Build Rate (°/100ft)	Turn Rate (°/100ft)	
4,800.00	18.59	354.21	4,592.26	1,312.88	-133.10	143.25	0.00	0.00	0.00	
4,900.00	18.59	354.21	4,687.05	1,344.60	-136.32	146.71	0.00	0.00	0.00	
5,000.00	18.59	354.21	4,781.83	1,376.31	-139.53	150.17	0.00	0.00	0.00	
5,100.00	18.59	354.21	4,876.61	1,408.03	-142.75	153.63	0.00	0.00	0.00	
5,200.00	18.59	354.21	4,971.39	1,439.75	-145.97	157.09	0.00	0.00	0.00	
5,300.00	18.59	354.21	5,066.18	1,471.46	-149.18	160.55	0.00	0.00	0.00	
5,400.00	18.59	354.21	5,160.96	1,503.18	-152.40	164.01	0.00	0.00	0.00	
5,500.00	18.59	354.21	5,255.74	1,534.90	-155.61	167.47	0.00	0.00	0.00	
5,512.78	18.59	354.21	5,267.85	1,538.95	-156.02	167.92	0.00	0.00	0.00	
Start Drop -2.00										
5,600.00	16.85	354.21	5,350.93	1,565.36	-158.70	170.80	2.00	-2.00	0.00	
5,700.00	14.85	354.21	5,447.13	1,592.52	-161.45	173.76	2.00	-2.00	0.00	
5,800.00	12.85	354.21	5,544.22	1,616.33	-163.87	176.36	2.00	-2.00	0.00	
5,900.00	10.85	354.21	5,642.08	1,636.75	-165.94	178.59	2.00	-2.00	0.00	
6,000.00	8.85	354.21	5,740.61	1,653.76	-167.66	180.44	2.00	-2.00	0.00	
6,100.00	6.85	354.21	5,839.67	1,667.34	-169.04	181.93	2.00	-2.00	0.00	
6,200.00	4.85	354.21	5,939.14	1,677.47	-170.07	183.03	2.00	-2.00	0.00	
6,300.00	2.85	354.21	6,038.91	1,684.15	-170.74	183.76	2.00	-2.00	0.00	
6,400.00	0.85	354.21	6,138.85	1,687.35	-171.07	184.11	2.00	-2.00	0.00	
6,442.28	0.00	0.00	6,181.13	1,687.66	-171.10	184.14	2.00	-2.00	0.00	
Start 400.00 hold at 6442.28 MD										
6,500.00	0.00	0.00	6,238.85	1,687.66	-171.10	184.14	0.00	0.00	0.00	
6,600.00	0.00	0.00	6,338.85	1,687.66	-171.10	184.14	0.00	0.00	0.00	
6,700.00	0.00	0.00	6,438.85	1,687.66	-171.10	184.14	0.00	0.00	0.00	
6,800.00	0.00	0.00	6,538.85	1,687.66	-171.10	184.14	0.00	0.00	0.00	
6,842.28	0.00	0.00	6,581.13	1,687.66	-171.10	184.14	0.00	0.00	0.00	
Start DLS 11.00 TFO 90.00										
6,900.00	6.35	90.00	6,638.73	1,687.66	-167.90	187.27	11.00	11.00	0.00	
7,000.00	17.35	90.00	6,736.45	1,687.66	-147.40	207.32	11.00	11.00	0.00	
7,100.00	28.35	90.00	6,828.46	1,687.66	-108.63	245.24	11.00	11.00	0.00	
7,200.00	39.35	90.00	6,911.39	1,687.66	-53.02	299.64	11.00	11.00	0.00	
7,300.00	50.35	90.00	6,982.17	1,687.66	17.40	368.51	11.00	11.00	0.00	
7,400.00	61.35	90.00	7,038.23	1,687.66	100.03	449.33	11.00	11.00	0.00	
7,500.00	72.35	90.00	7,077.48	1,687.66	191.84	539.12	11.00	11.00	0.00	
7,600.00	83.35	90.00	7,098.50	1,687.66	289.45	634.59	11.00	11.00	0.00	
7,660.46	90.00	90.00	7,102.00	1,687.66	349.77	693.59	11.00	11.00	0.00	
Start 7575.66 hold at 7660.46 MD										
7,700.00	90.00	90.00	7,102.00	1,687.66	389.31	732.26	0.00	0.00	0.00	
7,800.00	90.00	90.00	7,102.00	1,687.66	489.31	830.07	0.00	0.00	0.00	
7,900.00	90.00	90.00	7,102.00	1,687.66	589.31	927.88	0.00	0.00	0.00	
8,000.00	90.00	90.00	7,102.00	1,687.66	689.31	1,025.69	0.00	0.00	0.00	
8,100.00	90.00	90.00	7,102.00	1,687.66	789.31	1,123.49	0.00	0.00	0.00	
8,200.00	90.00	90.00	7,102.00	1,687.66	889.31	1,221.30	0.00	0.00	0.00	
8,300.00	90.00	90.00	7,102.00	1,687.66	989.31	1,319.11	0.00	0.00	0.00	
8,400.00	90.00	90.00	7,102.00	1,687.66	1,089.31	1,416.91	0.00	0.00	0.00	
8,500.00	90.00	90.00	7,102.00	1,687.66	1,189.31	1,514.72	0.00	0.00	0.00	
8,600.00	90.00	90.00	7,102.00	1,687.66	1,289.31	1,612.53	0.00	0.00	0.00	
8,700.00	90.00	90.00	7,102.00	1,687.66	1,389.31	1,710.34	0.00	0.00	0.00	
8,800.00	90.00	90.00	7,102.00	1,687.66	1,489.31	1,808.14	0.00	0.00	0.00	
8,900.00	90.00	90.00	7,102.00	1,687.66	1,589.31	1,905.95	0.00	0.00	0.00	
9,000.00	90.00	90.00	7,102.00	1,687.66	1,689.31	2,003.76	0.00	0.00	0.00	
9,100.00	90.00	90.00	7,102.00	1,687.66	1,789.31	2,101.56	0.00	0.00	0.00	
9,200.00	90.00	90.00	7,102.00	1,687.66	1,889.31	2,199.37	0.00	0.00	0.00	
9,300.00	90.00	90.00	7,102.00	1,687.66	1,989.31	2,297.18	0.00	0.00	0.00	

Database:	Casper District	Local Co-ordinate Reference:	Well Fagerberg 25N-7B-M
Company:	Synergy Resources Corp.	TVD Reference:	GL 4800 & KB 20 @ 4820.00ft (PD 462)
Project:	Weld County, CO NAD 83	MD Reference:	GL 4800 & KB 20 @ 4820.00ft (PD 462)
Site:	SRC Fagerberg 13-12 Pad	North Reference:	True
Well:	Fagerberg 25N-7B-M	Survey Calculation Method:	Minimum Curvature
Wellbore:	OH		
Design:	Plan #2		

Planned Survey									
Measured Depth (ft)	Inclination (°)	Azimuth (°)	Vertical Depth (ft)	+N/-S (ft)	+E/-W (ft)	Vertical Section (ft)	Dogleg Rate (°/100ft)	Build Rate (°/100ft)	Turn Rate (°/100ft)
9,400.00	90.00	90.00	7,102.00	1,687.66	2,089.31	2,394.98	0.00	0.00	0.00
9,500.00	90.00	90.00	7,102.00	1,687.66	2,189.31	2,492.79	0.00	0.00	0.00
9,600.00	90.00	90.00	7,102.00	1,687.66	2,289.31	2,590.60	0.00	0.00	0.00
9,700.00	90.00	90.00	7,102.00	1,687.66	2,389.31	2,688.41	0.00	0.00	0.00
9,800.00	90.00	90.00	7,102.00	1,687.66	2,489.31	2,786.21	0.00	0.00	0.00
9,900.00	90.00	90.00	7,102.00	1,687.66	2,589.31	2,884.02	0.00	0.00	0.00
10,000.00	90.00	90.00	7,102.00	1,687.66	2,689.31	2,981.83	0.00	0.00	0.00
10,100.00	90.00	90.00	7,102.00	1,687.66	2,789.31	3,079.63	0.00	0.00	0.00
10,200.00	90.00	90.00	7,102.00	1,687.66	2,889.31	3,177.44	0.00	0.00	0.00
10,300.00	90.00	90.00	7,102.00	1,687.66	2,989.31	3,275.25	0.00	0.00	0.00
10,400.00	90.00	90.00	7,102.00	1,687.65	3,089.31	3,373.06	0.00	0.00	0.00
10,500.00	90.00	90.00	7,102.00	1,687.65	3,189.31	3,470.86	0.00	0.00	0.00
10,600.00	90.00	90.00	7,102.00	1,687.65	3,289.31	3,568.67	0.00	0.00	0.00
10,700.00	90.00	90.00	7,102.00	1,687.65	3,389.31	3,666.48	0.00	0.00	0.00
10,800.00	90.00	90.00	7,102.00	1,687.65	3,489.31	3,764.28	0.00	0.00	0.00
10,900.00	90.00	90.00	7,102.00	1,687.65	3,589.31	3,862.09	0.00	0.00	0.00
11,000.00	90.00	90.00	7,102.00	1,687.65	3,689.31	3,959.90	0.00	0.00	0.00
11,100.00	90.00	90.00	7,102.00	1,687.65	3,789.31	4,057.71	0.00	0.00	0.00
11,200.00	90.00	90.00	7,102.00	1,687.65	3,889.31	4,155.51	0.00	0.00	0.00
11,300.00	90.00	90.00	7,102.00	1,687.65	3,989.31	4,253.32	0.00	0.00	0.00
11,400.00	90.00	90.00	7,102.00	1,687.65	4,089.31	4,351.13	0.00	0.00	0.00
11,500.00	90.00	90.00	7,102.00	1,687.65	4,189.31	4,448.93	0.00	0.00	0.00
11,600.00	90.00	90.00	7,102.00	1,687.65	4,289.31	4,546.74	0.00	0.00	0.00
11,700.00	90.00	90.00	7,102.00	1,687.65	4,389.31	4,644.55	0.00	0.00	0.00
11,800.00	90.00	90.00	7,102.00	1,687.65	4,489.31	4,742.35	0.00	0.00	0.00
11,900.00	90.00	90.00	7,102.00	1,687.65	4,589.31	4,840.16	0.00	0.00	0.00
12,000.00	90.00	90.00	7,102.00	1,687.65	4,689.31	4,937.97	0.00	0.00	0.00
12,100.00	90.00	90.00	7,102.00	1,687.65	4,789.31	5,035.78	0.00	0.00	0.00
12,200.00	90.00	90.00	7,102.00	1,687.65	4,889.31	5,133.58	0.00	0.00	0.00
12,300.00	90.00	90.00	7,102.00	1,687.65	4,989.31	5,231.39	0.00	0.00	0.00
12,400.00	90.00	90.00	7,102.00	1,687.65	5,089.31	5,329.20	0.00	0.00	0.00
12,500.00	90.00	90.00	7,102.00	1,687.65	5,189.31	5,427.00	0.00	0.00	0.00
12,600.00	90.00	90.00	7,102.00	1,687.65	5,289.31	5,524.81	0.00	0.00	0.00
12,700.00	90.00	90.00	7,102.00	1,687.65	5,389.31	5,622.62	0.00	0.00	0.00
12,800.00	90.00	90.00	7,102.00	1,687.65	5,489.31	5,720.43	0.00	0.00	0.00
12,900.00	90.00	90.00	7,102.00	1,687.65	5,589.31	5,818.23	0.00	0.00	0.00
13,000.00	90.00	90.00	7,102.00	1,687.65	5,689.31	5,916.04	0.00	0.00	0.00
13,100.00	90.00	90.00	7,102.00	1,687.65	5,789.31	6,013.85	0.00	0.00	0.00
13,200.00	90.00	90.00	7,102.00	1,687.65	5,889.31	6,111.65	0.00	0.00	0.00
13,300.00	90.00	90.00	7,102.00	1,687.65	5,989.31	6,209.46	0.00	0.00	0.00
13,400.00	90.00	90.00	7,102.00	1,687.65	6,089.31	6,307.27	0.00	0.00	0.00
13,500.00	90.00	90.00	7,102.00	1,687.65	6,189.31	6,405.08	0.00	0.00	0.00
13,600.00	90.00	90.00	7,102.00	1,687.65	6,289.31	6,502.88	0.00	0.00	0.00
13,700.00	90.00	90.00	7,102.00	1,687.65	6,389.31	6,600.69	0.00	0.00	0.00
13,800.00	90.00	90.00	7,102.00	1,687.65	6,489.31	6,698.50	0.00	0.00	0.00
13,900.00	90.00	90.00	7,102.00	1,687.65	6,589.31	6,796.30	0.00	0.00	0.00
14,000.00	90.00	90.00	7,102.00	1,687.65	6,689.31	6,894.11	0.00	0.00	0.00
14,100.00	90.00	90.00	7,102.00	1,687.65	6,789.31	6,991.92	0.00	0.00	0.00
14,200.00	90.00	90.00	7,102.00	1,687.65	6,889.31	7,089.72	0.00	0.00	0.00
14,300.00	90.00	90.00	7,102.00	1,687.65	6,989.31	7,187.53	0.00	0.00	0.00
14,400.00	90.00	90.00	7,102.00	1,687.65	7,089.31	7,285.34	0.00	0.00	0.00
14,500.00	90.00	90.00	7,102.00	1,687.65	7,189.31	7,383.15	0.00	0.00	0.00
14,600.00	90.00	90.00	7,102.00	1,687.65	7,289.31	7,480.95	0.00	0.00	0.00
14,700.00	90.00	90.00	7,102.00	1,687.65	7,389.31	7,578.76	0.00	0.00	0.00

Database:	Casper District	Local Co-ordinate Reference:	Well Fagerberg 25N-7B-M
Company:	Synergy Resources Corp.	TVD Reference:	GL 4800 & KB 20 @ 4820.00ft (PD 462)
Project:	Weld County, CO NAD 83	MD Reference:	GL 4800 & KB 20 @ 4820.00ft (PD 462)
Site:	SRC Fagerberg 13-12 Pad	North Reference:	True
Well:	Fagerberg 25N-7B-M	Survey Calculation Method:	Minimum Curvature
Wellbore:	OH		
Design:	Plan #2		

Planned Survey									
Measured Depth (ft)	Inclination (°)	Azimuth (°)	Vertical Depth (ft)	+N/-S (ft)	+E/-W (ft)	Vertical Section (ft)	Dogleg Rate (°/100ft)	Build Rate (°/100ft)	Turn Rate (°/100ft)
14,800.00	90.00	90.00	7,102.00	1,687.65	7,489.31	7,676.57	0.00	0.00	0.00
14,900.00	90.00	90.00	7,102.00	1,687.65	7,589.31	7,774.37	0.00	0.00	0.00
15,000.00	90.00	90.00	7,102.00	1,687.65	7,689.31	7,872.18	0.00	0.00	0.00
15,100.00	90.00	90.00	7,102.00	1,687.65	7,789.31	7,969.99	0.00	0.00	0.00
15,200.00	90.00	90.00	7,102.00	1,687.65	7,889.31	8,067.80	0.00	0.00	0.00
15,236.12	90.00	90.00	7,102.00	1,687.65	7,925.43	8,103.13	0.00	0.00	0.00
TD at 15236.12 - 25N-7B-M(2310 FNL 2430 FEL) PBHL									

Design Targets									
Target Name - hit/miss target - Shape	Dip Angle (°)	Dip Dir. (°)	TVD (ft)	+N/-S (ft)	+E/-W (ft)	Northing (usft)	Easting (usft)	Latitude	Longitude
25N-7B-M(2310 FNL 24: - plan hits target center - Point	0.00	0.00	7,102.00	1,687.65	7,925.43	1,427,284.16	3,220,900.40	40.5035800	-104.7056260

Casing Points					
Measured Depth (ft)	Vertical Depth (ft)	Name		Casing Diameter (in)	Hole Diameter (in)
1,748.52	1,700.00	9 5/8"		9.625	13.500

Plan Annotations				
Measured Depth (ft)	Vertical Depth (ft)	Local Coordinates		Comment
		+N/-S (ft)	+E/-W (ft)	
200.00	200.00	0.00	0.00	Start Build 2.00
1,129.50	1,113.28	148.71	-15.08	Start 4383.27 hold at 1129.50 MD
5,512.78	5,267.85	1,538.95	-156.02	Start Drop -2.00
6,442.28	6,181.13	1,687.66	-171.10	Start 400.00 hold at 6442.28 MD
6,842.28	6,581.13	1,687.66	-171.10	Start DLS 11.00 TFO 90.00
7,660.46	7,102.00	1,687.66	349.77	Start 7575.66 hold at 7660.46 MD
15,236.12	7,102.00	1,687.65	7,925.43	TD at 15236.12