

Target
Bottom Hole

-
- Section 6, T10N, R57W**
- LOT 1**
 2006 Alum. Cap,
 0.6' Below Ground
 Lat: 40.860678°
 Long: 103.804117°
- LOT 2**
- LOT 3**
- LOT 4**
 1917 Brass Cap,
 Fence
 Lat: 40.846147°
 Long: 103.803839°
- NOTE:**
 THE PROPOSED TARGET BOTTOM
 HOLE FOR THIS WELL IS LOCATED IN
 LOT 1 OF SECTION 6, T10N, R57W,
 6th P.M. AT 600' FNL 652' FEL IT
 BEARS N00°01'01"W 7294.64' FROM
 THE PROPOSED TOP OF PRODUCTION.
- HORSETAIL #07H-0647**
 Elev. Ungraded Ground = 4912.7'
- LINE TABLE**
- | LINE | DIRECTION | LENGTH |
|------|-------------|---------|
| L1 | N39°10'10"W | 161.53' |
- Boundaries and Measurements:**
 Top: S89°29'32"W - 2517.94' (Meas.)
 Right: S89°29'19"W - 2651.74' (Meas.)
 Bottom: S89°44'57"W - 2530.51' (Meas.)
 Left: N00°31'10"W - 2647.68' (Meas.)
 Right (Inner): N00°55'43"W - 2661.06' (Meas.)
 Right (Outer): N01°04'20"W - 2659.64' (Meas.)
 Left (Outer): N01°11'48"W - 2649.08' (Meas.)
- Well Details:**
 Top of Production: 2561'
 Distance from Top of Production to Well: 670'
 Distance from Well to Right Boundary: 570'
 Distance from Well to Bottom Boundary: 2631'
- Other Measurements:**
 N00°01'01"W 7294.64' (from Top of Production to Well)
 0.9' Below Ground Lat: 40.860797° Long: 103.785433°
 2006 Alum. Cap, 0.1' Below Ground Lat: 40.853497° Long: 103.785283°
 1917 Brass Cap, 0.2' High Lat: 40.846172° Long: 103.794694°
 1917 Brass Cap, 0.4' High Lat: 40.846200° Long: 103.785111°

A horizontal scale bar with alternating black and white segments. Above the bar, the markings '1000'', '500'', '0'', '500'', and '1000'' are printed from left to right, indicating distances in feet.

NAD 83 (TOP OF PRODUCTION)	NAD 83 (SURFACE LOCATION)
LATITUDE = 40°51'13.52" (40.853756)	LATITUDE = 40°51'12.28" (40.853411)
LONGITUDE = 103°47'15.76" (103.787711)	LONGITUDE = 103°47'14.43" (103.787342)
NAD 27 (TOP OF PRODUCTION)	NAD 27 (SURFACE LOCATION)
LATITUDE = 40°51'13.57" (40.853769)	LATITUDE = 40°51'12.33" (40.853425)
LONGITUDE = 103°47'13.95" (103.787208)	LONGITUDE = 103°47'12.63" (103.786842)

CERTIFICATE

THIS IS TO CERTIFY THAT THE ABOVE DEED WAS PREPARED FROM FIELD NOTES OF ACTUAL SURVEYS MADE BY ME OR UNDER MY SUPERVISION, AND THAT THE SAME ARE TRUE AND CORRECT TO THE BEST OF MY KNOWLEDGE AND BELIEF.

REGISTERED LAND SURVEYOR
REGISTRATION NO. 28285
STATE OF COLORADO
02-16-16

BASIS OF BEARINGS

BASIS OF BEARINGS IS A G.P.S. OBSERVATION

BASIS OF ELEVATION

SPOT ELEVATION LOCATED AT THE NORTHEAST CORNER OF SECTION 15, T9N, R57W, 6th P.M. TAKEN FROM THE GATEHOOK SPRING, QUADRANGLE, COLORADO, WELD COUNTY, 7.5 MINUTE QUAD (TOPOGRAPHIC MAP) PUBLISHED BY THE UNITED STATES DEPARTMENT OF THE INTERIOR, GEOLOGICAL SURVEY. SAID ELEVATION IS MARKED AS BEING 4679 FEET.



UELS, LLC
Corporate Office * 85 South 200 East
Vernal, UT 84078 * (435) 789-1017

WHITING OIL & GAS CORP.

HORSETAIL #07H-0647 (SURFACE LOCATION)
NE 1/4 SE 1/4, SECTION 7, T10N, R57W, 6th P.M.
WELD COUNTY, COLORADO

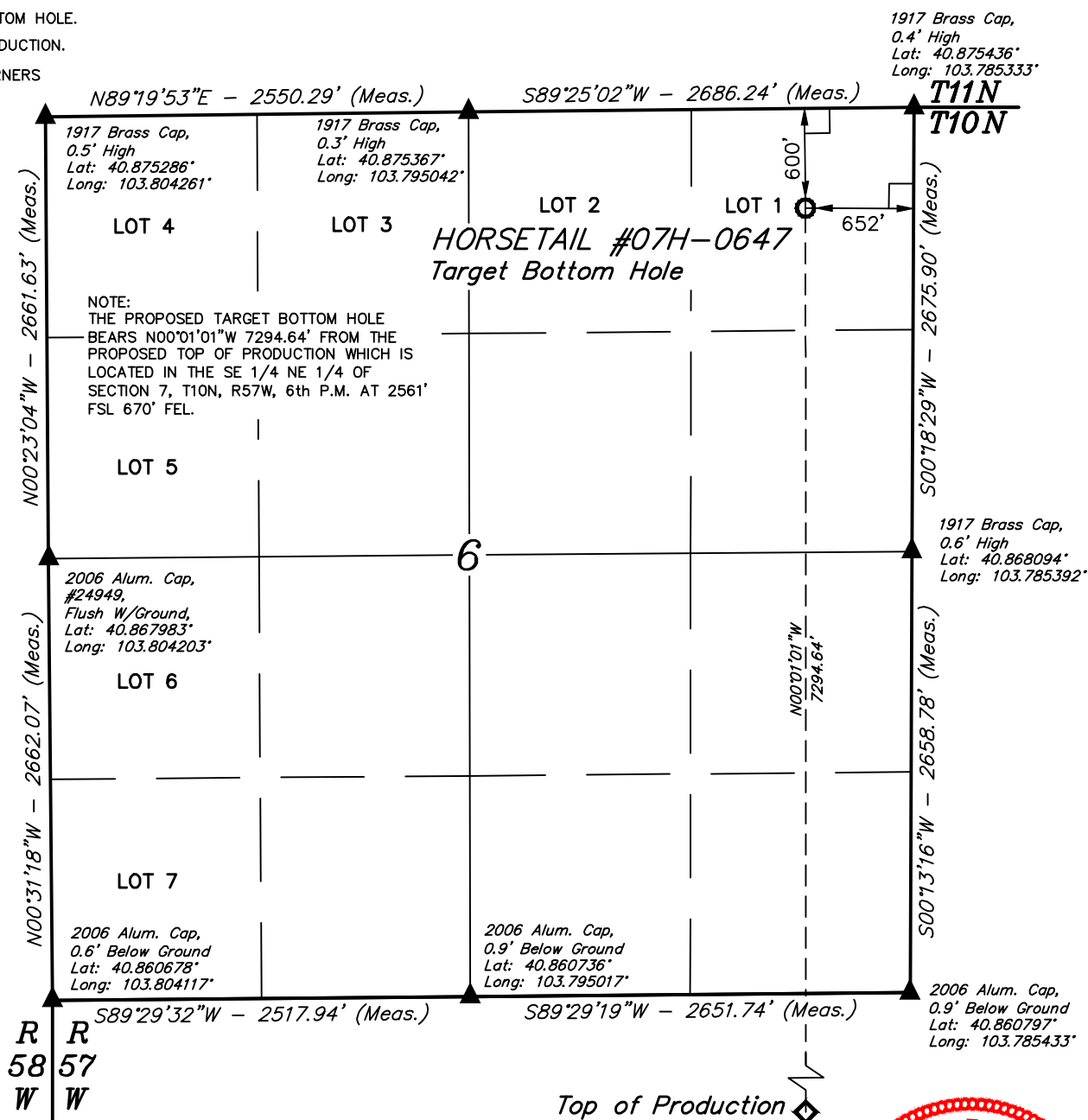
SURVEYED BY: DALLAS NIELSEN, J.S.		DATE: 12-11-14
DRAWN BY: K.B.		DATE DRAWN: 10-30-14
SCALE: 1" = 1000'		REVISED: 02-16-16 M.D.

WELL LOCATION PLAT

LEGEND:

- = 90° SYMBOL
- = TARGET BOTTOM HOLE.
- = TOP OF PRODUCTION.
- = SECTION CORNERS LOCATED.

T10N, R57W, 6th P.M.



NAD 83 (TARGET BOTTOM HOLE)
LATITUDE = 40°52'25.58" (40.873772)
LONGITUDE = 103°47'15.73" (103.787703)
NAD 27 (TARGET BOTTOM HOLE)
LATITUDE = 40°52'25.63" (40.873786)
LONGITUDE = 103°47'13.93" (103.787203)



BASIS OF BEARINGS
BASIS OF BEARINGS IS A G.P.S. OBSERVATION

BASIS OF ELEVATION

SPOT ELEVATION LOCATED AT THE NORTHEAST CORNER OF SECTION 15, T9N, R57W, 6th P.M. TAKEN FROM THE GATEHOOK SPRING, QUADRANGLE, COLORADO, WELD COUNTY, 7.5 MINUTE QUAD (TOPOGRAPHIC MAP) PUBLISHED BY THE UNITED STATES DEPARTMENT OF THE INTERIOR, GEOLOGICAL SURVEY. SAID ELEVATION IS MARKED AS BEING 4679 FEET.



UELS, LLC
Corporate Office * 85 South 200 East
Vernal, UT 84078 * (435) 789-1017

WHITING OIL & GAS CORP.

HORSETAIL #07H-0647 (TARGET BOTTOM HOLE)
LOT 1, SECTION 6, T10N, R57W, 6th P.M.
WELD COUNTY, COLORADO

SURVEYED BY: DALLAS NIELSEN, J.S.	DATE: 12-11-14
DRAWN BY: K.B.	DATE DRAWN: 10-30-14
SCALE: 1" = 1000'	REVISED: 02-16-16 M.D.

WELL LOCATION PLAT