

PROJECT DETAILS: Weld County, CO NAD 83

Geodetic System: US State Plane 1983
 Datum: North American Datum 1983
 Ellipsoid: GRS 1980
 Zone: Colorado Northern Zone
 System Datum: Mean Sea Level
 Local North: True

Project: Weld County, CO NAD 83
 Site: Anschutz Equus Farms 3-62-4 5 SESE Pad
 Well: Anschutz Equus Farms 03-62-04-4148D2
 Wellbore: OH
 Design: Plan #1



Azimuths to True North
 Magnetic North: 8.22°

Magnetic Field
 Strength: 52542.7nT
 Dip Angle: 66.91°
 Date: 2/12/2016
 Model: BGGM2015

SECTION DETAILS

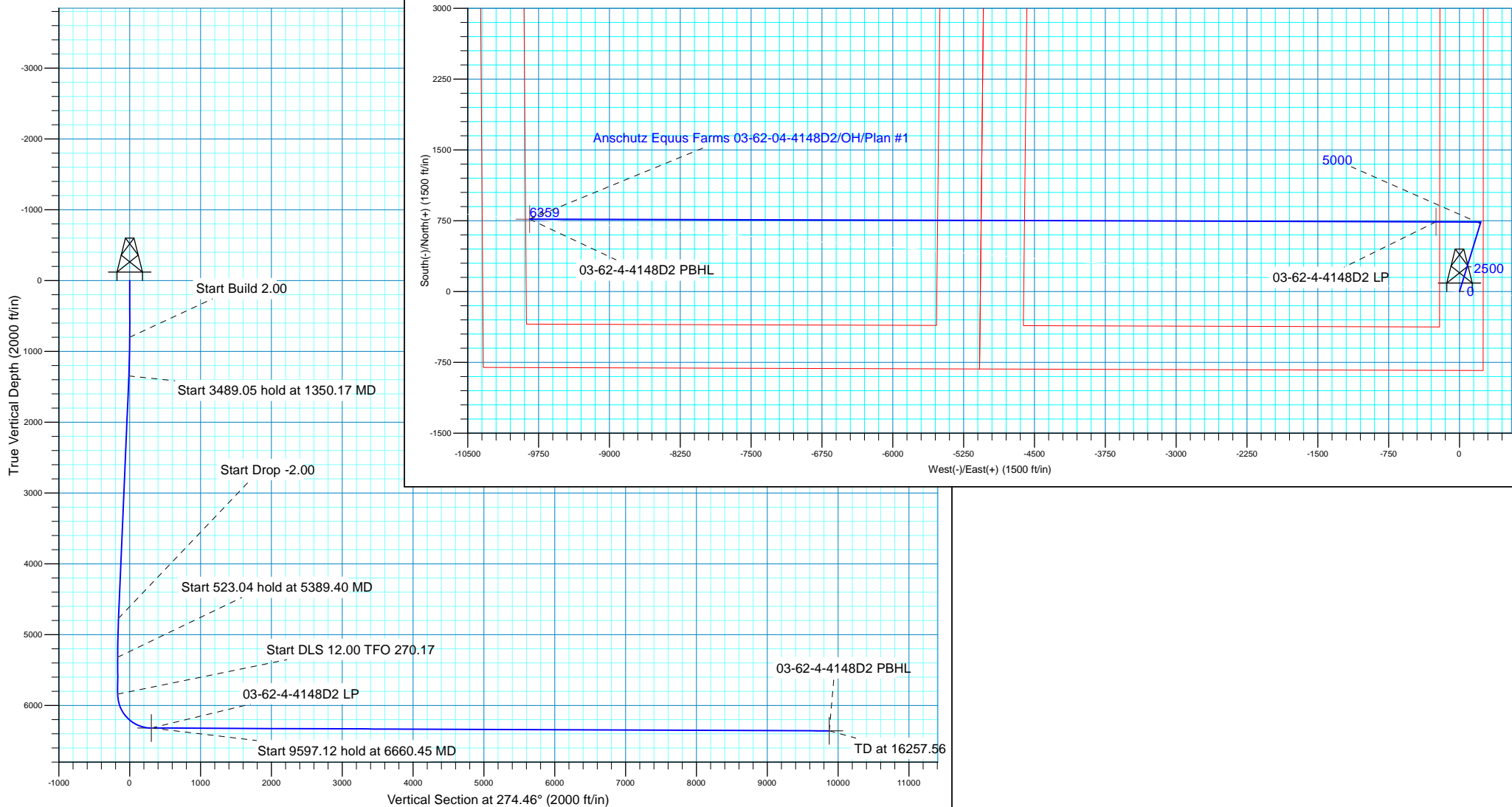
MD	Inc	Azi	TVD	+N/-S	+E/-W	Dleg	TFace	VSect
0.00	0.00	0.00	0.00	0.00	0.00	0.00	0.00	0.00
800.00	0.00	0.00	800.00	0.00	0.00	0.00	0.00	0.00
1350.17	11.00	17.08	1346.80	50.34	15.47	2.00	17.08	-11.51
4839.22	11.00	17.08	4771.70	686.91	211.09	0.00	0.00	-157.03
5389.40	0.00	0.00	5318.50	737.26	226.56	2.00	180.00	-168.54
5912.44	0.00	0.00	5841.54	737.26	226.56	0.00	0.00	-168.54
6660.45	89.76	270.17	6319.00	738.71	-248.91	12.00	270.17	305.60
16257.56	89.76	270.17	6359.00	767.99	-9845.90	0.00	0.00	9875.81

Plan: Plan #1 (Anschutz Equus Farms 03-62-04-4148D2/OH)

Created By: rscott Date: 17:43, February 15 2016

WELL DETAILS: Anschutz Equus Farms 03-62-04-4148D2

GL 4591 @ 4591.00ft (Original Well Elev) 4591.00
 Northing Easting Latitude Longitude
 0.00 0.00 1336114.32 3329293.68 40° 15' 0.070 N 104° 19' 12.850 W





Bill Barrett Corp.

Weld County, CO NAD 83

Anschutz Equus Farms 3-62-4 5 SESE Pad

Anschutz Equus Farms 03-62-04-4148D2

OH

Plan: Plan #1

Standard Planning Report

15 February, 2016



Database:	Casper District	Local Co-ordinate Reference:	Well Anschutz Equus Farms 03-62-04-4148D2
Company:	Bill Barrett Corp.	TVD Reference:	GL 4591 @ 4591.00ft (Original Well Elev)
Project:	Weld County, CO NAD 83	MD Reference:	GL 4591 @ 4591.00ft (Original Well Elev)
Site:	Anschutz Equus Farms 3-62-4 5 SESE Pad	North Reference:	True
Well:	Anschutz Equus Farms 03-62-04-4148D2	Survey Calculation Method:	Minimum Curvature
Wellbore:	OH		
Design:	Plan #1		

Project	Weld County, CO NAD 83		
Map System:	US State Plane 1983	System Datum:	Mean Sea Level
Geo Datum:	North American Datum 1983		
Map Zone:	Colorado Northern Zone		

Site	Anschutz Equus Farms 3-62-4 5 SESE Pad, SE 1/4 SE 1/4, SECTION 4, T3N, R62WJ.. 6th P.M.			
Site Position:		Northing:	1,336,024.28 usft	Latitude: 40° 14' 59.180 N
From:	Lat/Long	Easting:	3,329,294.89 usft	Longitude: 104° 19' 12.850 W
Position Uncertainty:	0.00 ft	Slot Radius:	13.200 in	Grid Convergence: 0.76 °

Well	Anschutz Equus Farms 03-62-04-4148D2, 835 FSL 250 FEL			
Well Position	+N/-S	90.05 ft	Northing:	1,336,114.32 usft
	+E/-W	0.00 ft	Easting:	3,329,293.69 usft
Position Uncertainty		0.00 ft	Wellhead Elevation:	0.00 ft
			Ground Level:	4,591.00 ft

Wellbore	OH				
Magnetics	Model Name	Sample Date	Declination (°)	Dip Angle (°)	Field Strength (nT)
	BGGM2015	2/12/2016	8.22	66.91	52,543

Design	Plan #1			
Audit Notes:				
Version:	Phase:	PLAN	Tie On Depth:	0.00
Vertical Section:	Depth From (TVD) (ft)	+N/-S (ft)	+E/-W (ft)	Direction (°)
	0.00	0.00	0.00	274.46

Plan Sections										
Measured Depth (ft)	Inclination (°)	Azimuth (°)	Vertical Depth (ft)	+N/-S (ft)	+E/-W (ft)	Dogleg Rate (°/100ft)	Build Rate (°/100ft)	Turn Rate (°/100ft)	TFO (°)	Target
0.00	0.00	0.00	0.00	0.00	0.00	0.00	0.00	0.00	0.00	
800.00	0.00	0.00	800.00	0.00	0.00	0.00	0.00	0.00	0.00	
1,350.17	11.00	17.08	1,346.80	50.34	15.47	2.00	2.00	0.00	17.08	
4,839.22	11.00	17.08	4,771.70	686.91	211.09	0.00	0.00	0.00	0.00	
5,389.40	0.00	0.00	5,318.50	737.26	226.56	2.00	-2.00	0.00	180.00	
5,912.44	0.00	0.00	5,841.54	737.26	226.56	0.00	0.00	0.00	0.00	
6,660.45	89.76	270.17	6,319.00	738.71	-248.91	12.00	12.00	-12.01	270.17	
16,257.56	89.76	270.17	6,359.00	767.99	-9,845.90	0.00	0.00	0.00	0.00	03-62-4-4148D2 PBH

Database:	Casper District	Local Co-ordinate Reference:	Well Anschutz Equus Farms 03-62-04-4148D2
Company:	Bill Barrett Corp.	TVD Reference:	GL 4591 @ 4591.00ft (Original Well Elev)
Project:	Weld County, CO NAD 83	MD Reference:	GL 4591 @ 4591.00ft (Original Well Elev)
Site:	Anschutz Equus Farms 3-62-4 5 SESE Pad	North Reference:	True
Well:	Anschutz Equus Farms 03-62-04-4148D2	Survey Calculation Method:	Minimum Curvature
Wellbore:	OH		
Design:	Plan #1		

Planned Survey									
Measured Depth (ft)	Inclination (°)	Azimuth (°)	Vertical Depth (ft)	+N/-S (ft)	+E/-W (ft)	Vertical Section (ft)	Dogleg Rate (°/100ft)	Build Rate (°/100ft)	Turn Rate (°/100ft)
0.00	0.00	0.00	0.00	0.00	0.00	0.00	0.00	0.00	0.00
100.00	0.00	0.00	100.00	0.00	0.00	0.00	0.00	0.00	0.00
200.00	0.00	0.00	200.00	0.00	0.00	0.00	0.00	0.00	0.00
300.00	0.00	0.00	300.00	0.00	0.00	0.00	0.00	0.00	0.00
400.00	0.00	0.00	400.00	0.00	0.00	0.00	0.00	0.00	0.00
500.00	0.00	0.00	500.00	0.00	0.00	0.00	0.00	0.00	0.00
600.00	0.00	0.00	600.00	0.00	0.00	0.00	0.00	0.00	0.00
700.00	0.00	0.00	700.00	0.00	0.00	0.00	0.00	0.00	0.00
800.00	0.00	0.00	800.00	0.00	0.00	0.00	0.00	0.00	0.00
Start Build 2.00									
900.00	2.00	17.08	899.98	1.67	0.51	-0.38	2.00	2.00	0.00
1,000.00	4.00	17.08	999.84	6.67	2.05	-1.52	2.00	2.00	0.00
1,100.00	6.00	17.08	1,099.45	15.00	4.61	-3.43	2.00	2.00	0.00
1,200.00	8.00	17.08	1,198.70	26.65	8.19	-6.09	2.00	2.00	0.00
1,300.00	10.00	17.08	1,297.47	41.60	12.78	-9.51	2.00	2.00	0.00
1,350.17	11.00	17.08	1,346.80	50.34	15.47	-11.51	2.00	2.00	0.00
Start 3489.05 hold at 1350.17 MD									
1,400.00	11.00	17.08	1,395.71	59.43	18.26	-13.59	0.00	0.00	0.00
1,500.00	11.00	17.08	1,493.87	77.68	23.87	-17.76	0.00	0.00	0.00
1,600.00	11.00	17.08	1,592.03	95.92	29.48	-21.93	0.00	0.00	0.00
1,700.00	11.00	17.08	1,690.19	114.17	35.08	-26.10	0.00	0.00	0.00
1,800.00	11.00	17.08	1,788.35	132.41	40.69	-30.27	0.00	0.00	0.00
1,900.00	11.00	17.08	1,886.52	150.66	46.30	-34.44	0.00	0.00	0.00
2,000.00	11.00	17.08	1,984.68	168.90	51.90	-38.61	0.00	0.00	0.00
2,100.00	11.00	17.08	2,082.84	187.15	57.51	-42.78	0.00	0.00	0.00
2,200.00	11.00	17.08	2,181.00	205.39	63.12	-46.95	0.00	0.00	0.00
2,300.00	11.00	17.08	2,279.16	223.64	68.72	-51.12	0.00	0.00	0.00
2,400.00	11.00	17.08	2,377.32	241.88	74.33	-55.30	0.00	0.00	0.00
2,500.00	11.00	17.08	2,475.49	260.13	79.94	-59.47	0.00	0.00	0.00
2,600.00	11.00	17.08	2,573.65	278.37	85.54	-63.64	0.00	0.00	0.00
2,700.00	11.00	17.08	2,671.81	296.62	91.15	-67.81	0.00	0.00	0.00
2,800.00	11.00	17.08	2,769.97	314.86	96.76	-71.98	0.00	0.00	0.00
2,900.00	11.00	17.08	2,868.13	333.11	102.36	-76.15	0.00	0.00	0.00
3,000.00	11.00	17.08	2,966.29	351.35	107.97	-80.32	0.00	0.00	0.00
3,100.00	11.00	17.08	3,064.45	369.60	113.58	-84.49	0.00	0.00	0.00
3,200.00	11.00	17.08	3,162.62	387.84	119.18	-88.66	0.00	0.00	0.00
3,300.00	11.00	17.08	3,260.78	406.09	124.79	-92.83	0.00	0.00	0.00
3,400.00	11.00	17.08	3,358.94	424.33	130.40	-97.00	0.00	0.00	0.00
3,500.00	11.00	17.08	3,457.10	442.58	136.00	-101.18	0.00	0.00	0.00
3,600.00	11.00	17.08	3,555.26	460.82	141.61	-105.35	0.00	0.00	0.00
3,700.00	11.00	17.08	3,653.42	479.07	147.22	-109.52	0.00	0.00	0.00
3,800.00	11.00	17.08	3,751.59	497.31	152.82	-113.69	0.00	0.00	0.00
3,900.00	11.00	17.08	3,849.75	515.56	158.43	-117.86	0.00	0.00	0.00
4,000.00	11.00	17.08	3,947.91	533.80	164.04	-122.03	0.00	0.00	0.00
4,100.00	11.00	17.08	4,046.07	552.04	169.64	-126.20	0.00	0.00	0.00
4,200.00	11.00	17.08	4,144.23	570.29	175.25	-130.37	0.00	0.00	0.00
4,300.00	11.00	17.08	4,242.39	588.53	180.86	-134.54	0.00	0.00	0.00
4,400.00	11.00	17.08	4,340.56	606.78	186.46	-138.71	0.00	0.00	0.00
4,500.00	11.00	17.08	4,438.72	625.02	192.07	-142.88	0.00	0.00	0.00
4,600.00	11.00	17.08	4,536.88	643.27	197.68	-147.05	0.00	0.00	0.00
4,700.00	11.00	17.08	4,635.04	661.51	203.28	-151.23	0.00	0.00	0.00
4,800.00	11.00	17.08	4,733.20	679.76	208.89	-155.40	0.00	0.00	0.00
4,839.22	11.00	17.08	4,771.70	686.91	211.09	-157.03	0.00	0.00	0.00

Database:	Casper District	Local Co-ordinate Reference:	Well Anschutz Equus Farms 03-62-04-4148D2
Company:	Bill Barrett Corp.	TVD Reference:	GL 4591 @ 4591.00ft (Original Well Elev)
Project:	Weld County, CO NAD 83	MD Reference:	GL 4591 @ 4591.00ft (Original Well Elev)
Site:	Anschutz Equus Farms 3-62-4 5 SESE Pad	North Reference:	True
Well:	Anschutz Equus Farms 03-62-04-4148D2	Survey Calculation Method:	Minimum Curvature
Wellbore:	OH		
Design:	Plan #1		

Planned Survey									
Measured Depth (ft)	Inclination (°)	Azimuth (°)	Vertical Depth (ft)	+N/-S (ft)	+E/-W (ft)	Vertical Section (ft)	Dogleg Rate (°/100ft)	Build Rate (°/100ft)	Turn Rate (°/100ft)
Start Drop -2.00									
4,900.00	9.79	17.08	4,831.48	697.40	214.31	-159.43	2.00	-2.00	0.00
5,000.00	7.79	17.08	4,930.30	712.00	218.80	-162.77	2.00	-2.00	0.00
5,100.00	5.79	17.08	5,029.60	723.30	222.27	-165.35	2.00	-2.00	0.00
5,200.00	3.79	17.08	5,129.24	731.28	224.72	-167.17	2.00	-2.00	0.00
5,300.00	1.79	17.08	5,229.12	735.93	226.15	-168.24	2.00	-2.00	0.00
5,389.40	0.00	0.00	5,318.50	737.26	226.56	-168.54	2.00	-2.00	0.00
Start 523.04 hold at 5389.40 MD									
5,400.00	0.00	0.00	5,329.10	737.26	226.56	-168.54	0.00	0.00	0.00
5,500.00	0.00	0.00	5,429.10	737.26	226.56	-168.54	0.00	0.00	0.00
5,600.00	0.00	0.00	5,529.10	737.26	226.56	-168.54	0.00	0.00	0.00
5,700.00	0.00	0.00	5,629.10	737.26	226.56	-168.54	0.00	0.00	0.00
5,800.00	0.00	0.00	5,729.10	737.26	226.56	-168.54	0.00	0.00	0.00
5,900.00	0.00	0.00	5,829.10	737.26	226.56	-168.54	0.00	0.00	0.00
5,912.44	0.00	0.00	5,841.54	737.26	226.56	-168.54	0.00	0.00	0.00
Start DLS 12.00 TFO 270.17									
6,000.00	10.51	270.17	5,928.61	737.28	218.55	-160.56	12.00	12.00	0.00
6,100.00	22.51	270.17	6,024.32	737.37	190.19	-132.27	12.00	12.00	0.00
6,200.00	34.51	270.17	6,112.03	737.51	142.55	-84.77	12.00	12.00	0.00
6,300.00	46.51	270.17	6,187.93	737.71	77.71	-20.11	12.00	12.00	0.00
6,400.00	58.51	270.17	6,248.68	737.95	-1.48	58.87	12.00	12.00	0.00
6,500.00	70.51	270.17	6,291.64	738.23	-91.58	148.71	12.00	12.00	0.00
6,600.00	82.51	270.17	6,314.93	738.53	-188.65	245.50	12.00	12.00	0.00
6,660.44	89.76	270.17	6,319.00	738.71	-248.91	305.60	12.00	12.00	0.00
Start 9597.12 hold at 6660.45 MD - 03-62-4-4148D2 LP									
6,700.00	89.76	270.17	6,319.17	738.83	-288.47	345.05	0.00	0.00	0.00
6,800.00	89.76	270.17	6,319.58	739.13	-388.47	444.77	0.00	0.00	0.00
6,900.00	89.76	270.17	6,320.00	739.44	-488.46	544.49	0.00	0.00	0.00
7,000.00	89.76	270.17	6,320.42	739.74	-588.46	644.21	0.00	0.00	0.00
7,100.00	89.76	270.17	6,320.83	740.05	-688.46	743.93	0.00	0.00	0.00
7,200.00	89.76	270.17	6,321.25	740.35	-788.46	843.65	0.00	0.00	0.00
7,300.00	89.76	270.17	6,321.67	740.66	-888.46	943.37	0.00	0.00	0.00
7,400.00	89.76	270.17	6,322.08	740.96	-988.46	1,043.08	0.00	0.00	0.00
7,500.00	89.76	270.17	6,322.50	741.27	-1,088.46	1,142.80	0.00	0.00	0.00
7,600.00	89.76	270.17	6,322.92	741.58	-1,188.45	1,242.52	0.00	0.00	0.00
7,700.00	89.76	270.17	6,323.33	741.88	-1,288.45	1,342.24	0.00	0.00	0.00
7,800.00	89.76	270.17	6,323.75	742.19	-1,388.45	1,441.96	0.00	0.00	0.00
7,900.00	89.76	270.17	6,324.17	742.49	-1,488.45	1,541.68	0.00	0.00	0.00
8,000.00	89.76	270.17	6,324.58	742.80	-1,588.45	1,641.40	0.00	0.00	0.00
8,100.00	89.76	270.17	6,325.00	743.10	-1,688.45	1,741.12	0.00	0.00	0.00
8,200.00	89.76	270.17	6,325.42	743.41	-1,788.45	1,840.84	0.00	0.00	0.00
8,300.00	89.76	270.17	6,325.83	743.71	-1,888.45	1,940.56	0.00	0.00	0.00
8,400.00	89.76	270.17	6,326.25	744.02	-1,988.44	2,040.28	0.00	0.00	0.00
8,500.00	89.76	270.17	6,326.67	744.32	-2,088.44	2,140.00	0.00	0.00	0.00
8,600.00	89.76	270.17	6,327.08	744.63	-2,188.44	2,239.72	0.00	0.00	0.00
8,700.00	89.76	270.17	6,327.50	744.93	-2,288.44	2,339.44	0.00	0.00	0.00
8,800.00	89.76	270.17	6,327.92	745.24	-2,388.44	2,439.16	0.00	0.00	0.00
8,900.00	89.76	270.17	6,328.33	745.54	-2,488.44	2,538.88	0.00	0.00	0.00
9,000.00	89.76	270.17	6,328.75	745.85	-2,588.44	2,638.60	0.00	0.00	0.00
9,100.00	89.76	270.17	6,329.17	746.15	-2,688.43	2,738.32	0.00	0.00	0.00
9,200.00	89.76	270.17	6,329.59	746.46	-2,788.43	2,838.04	0.00	0.00	0.00
9,300.00	89.76	270.17	6,330.00	746.76	-2,888.43	2,937.76	0.00	0.00	0.00
9,400.00	89.76	270.17	6,330.42	747.07	-2,988.43	3,037.48	0.00	0.00	0.00

Database:	Casper District	Local Co-ordinate Reference:	Well Anschutz Equus Farms 03-62-04-4148D2
Company:	Bill Barrett Corp.	TVD Reference:	GL 4591 @ 4591.00ft (Original Well Elev)
Project:	Weld County, CO NAD 83	MD Reference:	GL 4591 @ 4591.00ft (Original Well Elev)
Site:	Anschutz Equus Farms 3-62-4 5 SESE Pad	North Reference:	True
Well:	Anschutz Equus Farms 03-62-04-4148D2	Survey Calculation Method:	Minimum Curvature
Wellbore:	OH		
Design:	Plan #1		

Planned Survey									
Measured Depth (ft)	Inclination (°)	Azimuth (°)	Vertical Depth (ft)	+N/-S (ft)	+E/-W (ft)	Vertical Section (ft)	Dogleg Rate (°/100ft)	Build Rate (°/100ft)	Turn Rate (°/100ft)
9,500.00	89.76	270.17	6,330.84	747.37	-3,088.43	3,137.20	0.00	0.00	0.00
9,600.00	89.76	270.17	6,331.25	747.68	-3,188.43	3,236.92	0.00	0.00	0.00
9,700.00	89.76	270.17	6,331.67	747.98	-3,288.43	3,336.63	0.00	0.00	0.00
9,800.00	89.76	270.17	6,332.09	748.29	-3,388.43	3,436.35	0.00	0.00	0.00
9,900.00	89.76	270.17	6,332.50	748.59	-3,488.42	3,536.07	0.00	0.00	0.00
10,000.00	89.76	270.17	6,332.92	748.90	-3,588.42	3,635.79	0.00	0.00	0.00
10,100.00	89.76	270.17	6,333.34	749.20	-3,688.42	3,735.51	0.00	0.00	0.00
10,200.00	89.76	270.17	6,333.75	749.51	-3,788.42	3,835.23	0.00	0.00	0.00
10,300.00	89.76	270.17	6,334.17	749.81	-3,888.42	3,934.95	0.00	0.00	0.00
10,400.00	89.76	270.17	6,334.59	750.12	-3,988.42	4,034.67	0.00	0.00	0.00
10,500.00	89.76	270.17	6,335.00	750.42	-4,088.42	4,134.39	0.00	0.00	0.00
10,600.00	89.76	270.17	6,335.42	750.73	-4,188.41	4,234.11	0.00	0.00	0.00
10,700.00	89.76	270.17	6,335.84	751.03	-4,288.41	4,333.83	0.00	0.00	0.00
10,800.00	89.76	270.17	6,336.25	751.34	-4,388.41	4,433.55	0.00	0.00	0.00
10,900.00	89.76	270.17	6,336.67	751.64	-4,488.41	4,533.27	0.00	0.00	0.00
11,000.00	89.76	270.17	6,337.09	751.95	-4,588.41	4,632.99	0.00	0.00	0.00
11,100.00	89.76	270.17	6,337.50	752.25	-4,688.41	4,732.71	0.00	0.00	0.00
11,200.00	89.76	270.17	6,337.92	752.56	-4,788.41	4,832.43	0.00	0.00	0.00
11,300.00	89.76	270.17	6,338.34	752.86	-4,888.41	4,932.15	0.00	0.00	0.00
11,400.00	89.76	270.17	6,338.75	753.17	-4,988.40	5,031.87	0.00	0.00	0.00
11,500.00	89.76	270.17	6,339.17	753.47	-5,088.40	5,131.59	0.00	0.00	0.00
11,600.00	89.76	270.17	6,339.59	753.78	-5,188.40	5,231.31	0.00	0.00	0.00
11,700.00	89.76	270.17	6,340.00	754.08	-5,288.40	5,331.03	0.00	0.00	0.00
11,800.00	89.76	270.17	6,340.42	754.39	-5,388.40	5,430.75	0.00	0.00	0.00
11,900.00	89.76	270.17	6,340.84	754.69	-5,488.40	5,530.47	0.00	0.00	0.00
12,000.00	89.76	270.17	6,341.26	755.00	-5,588.40	5,630.18	0.00	0.00	0.00
12,100.00	89.76	270.17	6,341.67	755.30	-5,688.39	5,729.90	0.00	0.00	0.00
12,200.00	89.76	270.17	6,342.09	755.61	-5,788.39	5,829.62	0.00	0.00	0.00
12,300.00	89.76	270.17	6,342.51	755.91	-5,888.39	5,929.34	0.00	0.00	0.00
12,400.00	89.76	270.17	6,342.92	756.22	-5,988.39	6,029.06	0.00	0.00	0.00
12,500.00	89.76	270.17	6,343.34	756.52	-6,088.39	6,128.78	0.00	0.00	0.00
12,600.00	89.76	270.17	6,343.76	756.83	-6,188.39	6,228.50	0.00	0.00	0.00
12,700.00	89.76	270.17	6,344.17	757.13	-6,288.39	6,328.22	0.00	0.00	0.00
12,800.00	89.76	270.17	6,344.59	757.44	-6,388.39	6,427.94	0.00	0.00	0.00
12,900.00	89.76	270.17	6,345.01	757.74	-6,488.38	6,527.66	0.00	0.00	0.00
13,000.00	89.76	270.17	6,345.42	758.05	-6,588.38	6,627.38	0.00	0.00	0.00
13,100.00	89.76	270.17	6,345.84	758.35	-6,688.38	6,727.10	0.00	0.00	0.00
13,200.00	89.76	270.17	6,346.26	758.66	-6,788.38	6,826.82	0.00	0.00	0.00
13,300.00	89.76	270.17	6,346.67	758.96	-6,888.38	6,926.54	0.00	0.00	0.00
13,400.00	89.76	270.17	6,347.09	759.27	-6,988.38	7,026.26	0.00	0.00	0.00
13,500.00	89.76	270.17	6,347.51	759.57	-7,088.38	7,125.98	0.00	0.00	0.00
13,600.00	89.76	270.17	6,347.92	759.88	-7,188.37	7,225.70	0.00	0.00	0.00
13,700.00	89.76	270.17	6,348.34	760.18	-7,288.37	7,325.42	0.00	0.00	0.00
13,800.00	89.76	270.17	6,348.76	760.49	-7,388.37	7,425.14	0.00	0.00	0.00
13,900.00	89.76	270.17	6,349.17	760.79	-7,488.37	7,524.86	0.00	0.00	0.00
14,000.00	89.76	270.17	6,349.59	761.10	-7,588.37	7,624.58	0.00	0.00	0.00
14,100.00	89.76	270.17	6,350.01	761.40	-7,688.37	7,724.30	0.00	0.00	0.00
14,200.00	89.76	270.17	6,350.42	761.71	-7,788.37	7,824.02	0.00	0.00	0.00
14,300.00	89.76	270.17	6,350.84	762.01	-7,888.37	7,923.74	0.00	0.00	0.00
14,400.00	89.76	270.17	6,351.26	762.32	-7,988.36	8,023.45	0.00	0.00	0.00
14,500.00	89.76	270.17	6,351.67	762.62	-8,088.36	8,123.17	0.00	0.00	0.00
14,600.00	89.76	270.17	6,352.09	762.93	-8,188.36	8,222.89	0.00	0.00	0.00
14,700.00	89.76	270.17	6,352.51	763.23	-8,288.36	8,322.61	0.00	0.00	0.00

Database:	Casper District	Local Co-ordinate Reference:	Well Anschutz Equus Farms 03-62-04-4148D2
Company:	Bill Barrett Corp.	TVD Reference:	GL 4591 @ 4591.00ft (Original Well Elev)
Project:	Weld County, CO NAD 83	MD Reference:	GL 4591 @ 4591.00ft (Original Well Elev)
Site:	Anschutz Equus Farms 3-62-4 5 SESE Pad	North Reference:	True
Well:	Anschutz Equus Farms 03-62-04-4148D2	Survey Calculation Method:	Minimum Curvature
Wellbore:	OH		
Design:	Plan #1		

Planned Survey										
Measured Depth (ft)	Inclination (°)	Azimuth (°)	Vertical Depth (ft)	+N/-S (ft)	+E/-W (ft)	Vertical Section (ft)	Dogleg Rate (°/100ft)	Build Rate (°/100ft)	Turn Rate (°/100ft)	
14,800.00	89.76	270.17	6,352.93	763.54	-8,388.36	8,422.33	0.00	0.00	0.00	
14,900.00	89.76	270.17	6,353.34	763.84	-8,488.36	8,522.05	0.00	0.00	0.00	
15,000.00	89.76	270.17	6,353.76	764.15	-8,588.36	8,621.77	0.00	0.00	0.00	
15,100.00	89.76	270.17	6,354.18	764.45	-8,688.35	8,721.49	0.00	0.00	0.00	
15,200.00	89.76	270.17	6,354.59	764.76	-8,788.35	8,821.21	0.00	0.00	0.00	
15,300.00	89.76	270.17	6,355.01	765.06	-8,888.35	8,920.93	0.00	0.00	0.00	
15,400.00	89.76	270.17	6,355.43	765.37	-8,988.35	9,020.65	0.00	0.00	0.00	
15,500.00	89.76	270.17	6,355.84	765.67	-9,088.35	9,120.37	0.00	0.00	0.00	
15,600.00	89.76	270.17	6,356.26	765.98	-9,188.35	9,220.09	0.00	0.00	0.00	
15,700.00	89.76	270.17	6,356.68	766.28	-9,288.35	9,319.81	0.00	0.00	0.00	
15,800.00	89.76	270.17	6,357.09	766.59	-9,388.35	9,419.53	0.00	0.00	0.00	
15,900.00	89.76	270.17	6,357.51	766.89	-9,488.34	9,519.25	0.00	0.00	0.00	
16,000.00	89.76	270.17	6,357.93	767.20	-9,588.34	9,618.97	0.00	0.00	0.00	
16,100.00	89.76	270.17	6,358.34	767.50	-9,688.34	9,718.69	0.00	0.00	0.00	
16,200.00	89.76	270.17	6,358.76	767.81	-9,788.34	9,818.41	0.00	0.00	0.00	
16,257.56	89.76	270.17	6,359.00	767.99	-9,845.90	9,875.81	0.00	0.00	0.00	
TD at 16257.56 - 03-62-4-4148D2 PBHL										

Design Targets									
Target Name - hit/miss target - Shape	Dip Angle (°)	Dip Dir. (°)	TVD (ft)	+N/-S (ft)	+E/-W (ft)	Northing (usft)	Easting (usft)	Latitude	Longitude
03-62-4-4148D2 LP - plan hits target center - Point	0.00	0.00	6,319.00	738.71	-248.91	1,336,849.65	3,329,034.97	40° 15' 7.370 N	104° 19' 16.060 W
03-62-4-4148D2 PBHL - plan hits target center - Point	0.00	0.00	6,359.00	767.99	-9,845.90	1,336,751.25	3,319,438.46	40° 15' 7.640 N	104° 21' 19.840 W

Plan Annotations				
Measured Depth (ft)	Vertical Depth (ft)	Local Coordinates		Comment
		+N/-S (ft)	+E/-W (ft)	
800.00	800.00	0.00	0.00	Start Build 2.00
1,350.17	1,346.80	50.34	15.47	Start 3489.05 hold at 1350.17 MD
4,839.22	4,771.70	686.91	211.09	Start Drop -2.00
5,389.40	5,318.50	737.26	226.56	Start 523.04 hold at 5389.40 MD
5,912.44	5,841.54	737.26	226.56	Start DLS 12.00 TFO 270.17
6,660.45	6,319.00	738.71	-248.91	Start 9597.12 hold at 6660.45 MD
16,257.56	6,359.00	767.99	-9,845.90	TD at 16257.56