

**PROJECT DETAILS: Weld County, CO NAD 83**

Geodetic System: US State Plane 1983  
Datum: North American Datum 1983  
Ellipsoid: GRS 1980  
Zone: Colorado Northern Zone  
System Datum: Mean Sea Level  
Local North: True

Project: Weld County, CO NAD 83  
Site: Anschutz Equus Farms 3-62-4 5 SESE Pad  
Well: Anschutz Equus Farms 03-62-04-4148B2  
Wellbore: OH  
Design: Plan #1



Azimuths to True North  
Magnetic North: 8.22°

Magnetic Field  
Strength: 52542.7nT  
Dip Angle: 66.91°  
Date: 2/12/2016  
Model: BGGM2015

**SECTION DETAILS**

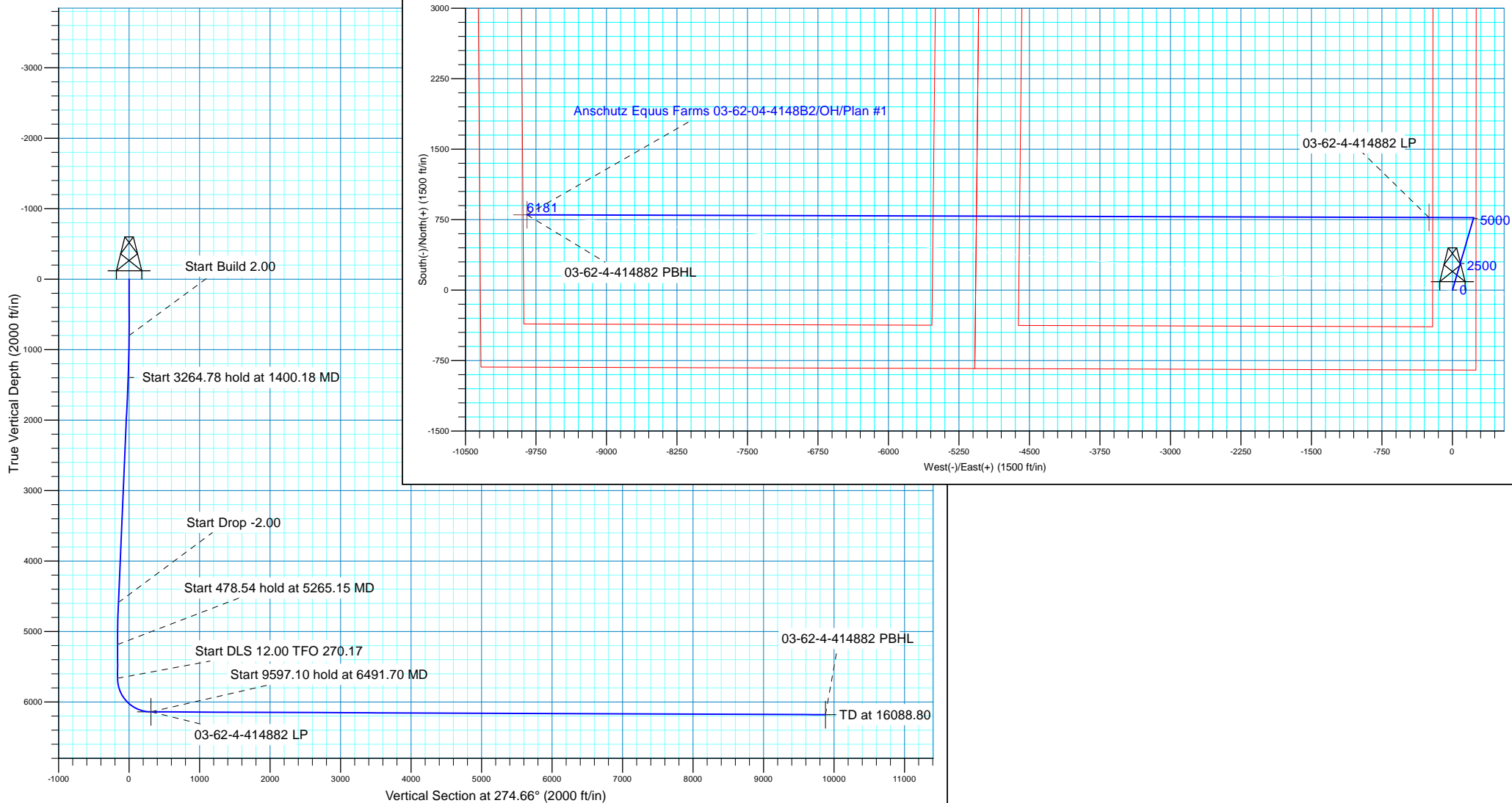
MD	Inc	Azi	TVD	+N/-S	+E/-W	Dleg	TFace	VSect
0.00	0.00	0.00	0.00	0.00	0.00	0.00	0.00	0.00
800.00	0.00	0.00	800.00	0.00	0.00	0.00	0.00	0.00
1400.18	12.00	16.36	1395.80	60.10	17.65	2.00	16.36	-12.71
4664.97	12.00	16.36	4589.20	711.60	208.91	0.00	0.00	-150.43
5265.15	0.00	0.00	5185.00	771.70	226.56	2.00	180.00	-163.13
5743.69	0.00	0.00	5663.54	771.70	226.56	0.00	0.00	-163.13
6491.70	89.76	270.17	6141.00	773.15	-248.91	12.00	270.17	310.89
16088.80	89.76	270.17	6181.00	802.43	-9845.88	0.00	0.00	9878.53

Plan: Plan #1 (Anschutz Equus Farms 03-62-04-4148B2/OH)

Created By: rscott Date: 18:05, February 15 2016

**WELL DETAILS: Anschutz Equus Farms 03-62-04-4148B2**

GL 4591 @ 4591.00ft (Original Well Elev) 4591.00  
+N/-S    +E/-W    Northing    Easting    Latitude    Longitude  
0.00    0.00    1336129.46    3329293.48    40° 15' 0.219 N    104° 19' 12.850 W





## **Bill Barrett Corp.**

**Weld County, CO NAD 83**

**Anschutz Equus Farms 3-62-4 5 SESE Pad**

**Anschutz Equus Farms 03-62-04-4148B2**

**OH**

**Plan: Plan #1**

## **Standard Planning Report**

**15 February, 2016**



<b>Database:</b>	Casper District	<b>Local Co-ordinate Reference:</b>	Well Anschutz Equus Farms 03-62-04-4148B2
<b>Company:</b>	Bill Barrett Corp.	<b>TVD Reference:</b>	GL 4591 @ 4591.00ft (Original Well Elev)
<b>Project:</b>	Weld County, CO NAD 83	<b>MD Reference:</b>	GL 4591 @ 4591.00ft (Original Well Elev)
<b>Site:</b>	Anschutz Equus Farms 3-62-4 5 SESE Pad	<b>North Reference:</b>	True
<b>Well:</b>	Anschutz Equus Farms 03-62-04-4148B2	<b>Survey Calculation Method:</b>	Minimum Curvature
<b>Wellbore:</b>	OH		
<b>Design:</b>	Plan #1		

<b>Project</b>	Weld County, CO NAD 83		
<b>Map System:</b>	US State Plane 1983	<b>System Datum:</b>	Mean Sea Level
<b>Geo Datum:</b>	North American Datum 1983		
<b>Map Zone:</b>	Colorado Northern Zone		

<b>Site</b>	Anschutz Equus Farms 3-62-4 5 SESE Pad, SE 1/4 SE 1/4, SECTION 4, T3N, R62WJ.. 6th P.M.			
<b>Site Position:</b>		<b>Northing:</b>	1,336,024.28 usft	<b>Latitude:</b> 40° 14' 59.180 N
<b>From:</b>	Lat/Long	<b>Easting:</b>	3,329,294.89 usft	<b>Longitude:</b> 104° 19' 12.850 W
<b>Position Uncertainty:</b>	0.00 ft	<b>Slot Radius:</b>	13.200 in	<b>Grid Convergence:</b> 0.76 °

<b>Well</b>	Anschutz Equus Farms 03-62-04-4148B2, 850 FSL 250 FEL			
<b>Well Position</b>	<b>+N/-S</b>	105.19 ft	<b>Northing:</b>	1,336,129.46 usft
	<b>+E/-W</b>	0.00 ft	<b>Easting:</b>	3,329,293.49 usft
<b>Position Uncertainty</b>		0.00 ft	<b>Wellhead Elevation:</b>	0.00 ft
			<b>Ground Level:</b>	4,591.00 ft

<b>Wellbore</b>	OH				
<b>Magnetics</b>	<b>Model Name</b>	<b>Sample Date</b>	<b>Declination (°)</b>	<b>Dip Angle (°)</b>	<b>Field Strength (nT)</b>
	BGGM2015	2/12/2016	8.22	66.91	52,543

<b>Design</b>	Plan #1			
<b>Audit Notes:</b>				
<b>Version:</b>	<b>Phase:</b>	PLAN	<b>Tie On Depth:</b>	0.00
<b>Vertical Section:</b>	<b>Depth From (TVD) (ft)</b>	<b>+N/-S (ft)</b>	<b>+E/-W (ft)</b>	<b>Direction (°)</b>
	0.00	0.00	0.00	274.66

<b>Plan Sections</b>										
Measured Depth (ft)	Inclination (°)	Azimuth (°)	Vertical Depth (ft)	+N/-S (ft)	+E/-W (ft)	Dogleg Rate (°/100ft)	Build Rate (°/100ft)	Turn Rate (°/100ft)	TFO (°)	Target
0.00	0.00	0.00	0.00	0.00	0.00	0.00	0.00	0.00	0.00	
800.00	0.00	0.00	800.00	0.00	0.00	0.00	0.00	0.00	0.00	
1,400.18	12.00	16.36	1,395.80	60.10	17.65	2.00	2.00	0.00	16.36	
4,664.97	12.00	16.36	4,589.20	711.60	208.91	0.00	0.00	0.00	0.00	
5,265.15	0.00	0.00	5,185.00	771.70	226.56	2.00	-2.00	0.00	180.00	
5,743.69	0.00	0.00	5,663.54	771.70	226.56	0.00	0.00	0.00	0.00	
6,491.70	89.76	270.17	6,141.00	773.15	-248.91	12.00	12.00	-12.01	270.17	
16,088.80	89.76	270.17	6,181.00	802.43	-9,845.88	0.00	0.00	0.00	0.00	03-62-4-414882 PBHI

<b>Database:</b>	Casper District	<b>Local Co-ordinate Reference:</b>	Well Anschutz Equus Farms 03-62-04-4148B2
<b>Company:</b>	Bill Barrett Corp.	<b>TVD Reference:</b>	GL 4591 @ 4591.00ft (Original Well Elev)
<b>Project:</b>	Weld County, CO NAD 83	<b>MD Reference:</b>	GL 4591 @ 4591.00ft (Original Well Elev)
<b>Site:</b>	Anschutz Equus Farms 3-62-4 5 SESE Pad	<b>North Reference:</b>	True
<b>Well:</b>	Anschutz Equus Farms 03-62-04-4148B2	<b>Survey Calculation Method:</b>	Minimum Curvature
<b>Wellbore:</b>	OH		
<b>Design:</b>	Plan #1		

Planned Survey										
Measured Depth (ft)	Inclination (°)	Azimuth (°)	Vertical Depth (ft)	+N/-S (ft)	+E/-W (ft)	Vertical Section (ft)	Dogleg Rate (°/100ft)	Build Rate (°/100ft)	Turn Rate (°/100ft)	
0.00	0.00	0.00	0.00	0.00	0.00	0.00	0.00	0.00	0.00	
100.00	0.00	0.00	100.00	0.00	0.00	0.00	0.00	0.00	0.00	
200.00	0.00	0.00	200.00	0.00	0.00	0.00	0.00	0.00	0.00	
300.00	0.00	0.00	300.00	0.00	0.00	0.00	0.00	0.00	0.00	
400.00	0.00	0.00	400.00	0.00	0.00	0.00	0.00	0.00	0.00	
500.00	0.00	0.00	500.00	0.00	0.00	0.00	0.00	0.00	0.00	
600.00	0.00	0.00	600.00	0.00	0.00	0.00	0.00	0.00	0.00	
700.00	0.00	0.00	700.00	0.00	0.00	0.00	0.00	0.00	0.00	
800.00	0.00	0.00	800.00	0.00	0.00	0.00	0.00	0.00	0.00	
<b>Start Build 2.00</b>										
900.00	2.00	16.36	899.98	1.67	0.49	-0.35	2.00	2.00	0.00	
1,000.00	4.00	16.36	999.84	6.70	1.97	-1.42	2.00	2.00	0.00	
1,100.00	6.00	16.36	1,099.45	15.06	4.42	-3.18	2.00	2.00	0.00	
1,200.00	8.00	16.36	1,198.70	26.75	7.85	-5.65	2.00	2.00	0.00	
1,300.00	10.00	16.36	1,297.47	41.76	12.26	-8.83	2.00	2.00	0.00	
1,400.00	12.00	16.36	1,395.62	60.07	17.63	-12.70	2.00	2.00	0.00	
1,400.18	12.00	16.36	1,395.80	60.10	17.65	-12.71	2.00	2.00	0.00	
<b>Start 3264.78 hold at 1400.18 MD</b>										
1,500.00	12.00	16.36	1,493.44	80.02	23.49	-16.92	0.00	0.00	0.00	
1,600.00	12.00	16.36	1,591.25	99.98	29.35	-21.13	0.00	0.00	0.00	
1,700.00	12.00	16.36	1,689.06	119.93	35.21	-25.35	0.00	0.00	0.00	
1,800.00	12.00	16.36	1,786.88	139.89	41.07	-29.57	0.00	0.00	0.00	
1,900.00	12.00	16.36	1,884.69	159.84	46.93	-33.79	0.00	0.00	0.00	
2,000.00	12.00	16.36	1,982.50	179.80	52.79	-38.01	0.00	0.00	0.00	
2,100.00	12.00	16.36	2,080.32	199.75	58.64	-42.23	0.00	0.00	0.00	
2,200.00	12.00	16.36	2,178.13	219.71	64.50	-46.45	0.00	0.00	0.00	
2,300.00	12.00	16.36	2,275.94	239.66	70.36	-50.66	0.00	0.00	0.00	
2,400.00	12.00	16.36	2,373.76	259.62	76.22	-54.88	0.00	0.00	0.00	
2,500.00	12.00	16.36	2,471.57	279.57	82.08	-59.10	0.00	0.00	0.00	
2,600.00	12.00	16.36	2,569.38	299.53	87.94	-63.32	0.00	0.00	0.00	
2,700.00	12.00	16.36	2,667.20	319.48	93.80	-67.54	0.00	0.00	0.00	
2,800.00	12.00	16.36	2,765.01	339.44	99.65	-71.76	0.00	0.00	0.00	
2,900.00	12.00	16.36	2,862.82	359.39	105.51	-75.97	0.00	0.00	0.00	
3,000.00	12.00	16.36	2,960.64	379.35	111.37	-80.19	0.00	0.00	0.00	
3,100.00	12.00	16.36	3,058.45	399.30	117.23	-84.41	0.00	0.00	0.00	
3,200.00	12.00	16.36	3,156.27	419.26	123.09	-88.63	0.00	0.00	0.00	
3,300.00	12.00	16.36	3,254.08	439.22	128.95	-92.85	0.00	0.00	0.00	
3,400.00	12.00	16.36	3,351.89	459.17	134.81	-97.07	0.00	0.00	0.00	
3,500.00	12.00	16.36	3,449.71	479.13	140.66	-101.28	0.00	0.00	0.00	
3,600.00	12.00	16.36	3,547.52	499.08	146.52	-105.50	0.00	0.00	0.00	
3,700.00	12.00	16.36	3,645.33	519.04	152.38	-109.72	0.00	0.00	0.00	
3,800.00	12.00	16.36	3,743.15	538.99	158.24	-113.94	0.00	0.00	0.00	
3,900.00	12.00	16.36	3,840.96	558.95	164.10	-118.16	0.00	0.00	0.00	
4,000.00	12.00	16.36	3,938.77	578.90	169.96	-122.38	0.00	0.00	0.00	
4,100.00	12.00	16.36	4,036.59	598.86	175.82	-126.59	0.00	0.00	0.00	
4,200.00	12.00	16.36	4,134.40	618.81	181.67	-130.81	0.00	0.00	0.00	
4,300.00	12.00	16.36	4,232.21	638.77	187.53	-135.03	0.00	0.00	0.00	
4,400.00	12.00	16.36	4,330.03	658.72	193.39	-139.25	0.00	0.00	0.00	
4,500.00	12.00	16.36	4,427.84	678.68	199.25	-143.47	0.00	0.00	0.00	
4,600.00	12.00	16.36	4,525.65	698.63	205.11	-147.69	0.00	0.00	0.00	
4,664.97	12.00	16.36	4,589.20	711.60	208.91	-150.43	0.00	0.00	0.00	
<b>Start Drop -2.00</b>										
4,700.00	11.30	16.36	4,623.51	718.39	210.91	-151.86	2.00	-2.00	0.00	

<b>Database:</b>	Casper District	<b>Local Co-ordinate Reference:</b>	Well Anschutz Equus Farms 03-62-04-4148B2
<b>Company:</b>	Bill Barrett Corp.	<b>TVD Reference:</b>	GL 4591 @ 4591.00ft (Original Well Elev)
<b>Project:</b>	Weld County, CO NAD 83	<b>MD Reference:</b>	GL 4591 @ 4591.00ft (Original Well Elev)
<b>Site:</b>	Anschutz Equus Farms 3-62-4 5 SESE Pad	<b>North Reference:</b>	True
<b>Well:</b>	Anschutz Equus Farms 03-62-04-4148B2	<b>Survey Calculation Method:</b>	Minimum Curvature
<b>Wellbore:</b>	OH		
<b>Design:</b>	Plan #1		

Planned Survey									
Measured Depth (ft)	Inclination (°)	Azimuth (°)	Vertical Depth (ft)	+N/-S (ft)	+E/-W (ft)	Vertical Section (ft)	Dogleg Rate (°/100ft)	Build Rate (°/100ft)	Turn Rate (°/100ft)
4,800.00	9.30	16.36	4,721.89	735.55	215.95	-155.49	2.00	-2.00	0.00
4,900.00	7.30	16.36	4,820.84	749.40	220.01	-158.42	2.00	-2.00	0.00
5,000.00	5.30	16.36	4,920.23	759.94	223.11	-160.65	2.00	-2.00	0.00
5,100.00	3.30	16.36	5,019.94	767.13	225.22	-162.17	2.00	-2.00	0.00
5,200.00	1.30	16.36	5,119.86	770.99	226.35	-162.98	2.00	-2.00	0.00
5,265.15	0.00	0.00	5,185.00	771.70	226.56	-163.13	2.00	-2.00	0.00
Start 478.54 hold at 5265.15 MD									
5,300.00	0.00	0.00	5,219.85	771.70	226.56	-163.13	0.00	0.00	0.00
5,400.00	0.00	0.00	5,319.85	771.70	226.56	-163.13	0.00	0.00	0.00
5,500.00	0.00	0.00	5,419.85	771.70	226.56	-163.13	0.00	0.00	0.00
5,600.00	0.00	0.00	5,519.85	771.70	226.56	-163.13	0.00	0.00	0.00
5,700.00	0.00	0.00	5,619.85	771.70	226.56	-163.13	0.00	0.00	0.00
5,743.69	0.00	0.00	5,663.54	771.70	226.56	-163.13	0.00	0.00	0.00
Start DLS 12.00 TFO 270.17									
5,800.00	6.76	270.17	5,719.72	771.71	223.24	-159.83	12.00	12.00	0.00
5,900.00	18.76	270.17	5,817.07	771.78	201.20	-137.85	12.00	12.00	0.00
6,000.00	30.76	270.17	5,907.72	771.90	159.40	-96.18	12.00	12.00	0.00
6,100.00	42.76	270.17	5,987.69	772.09	99.67	-36.63	12.00	12.00	0.00
6,200.00	54.76	270.17	6,053.49	772.32	24.61	38.20	12.00	12.00	0.00
6,300.00	66.76	270.17	6,102.26	772.58	-62.48	125.03	12.00	12.00	0.00
6,400.00	78.76	270.17	6,131.84	772.87	-157.81	220.07	12.00	12.00	0.00
6,491.70	89.76	270.17	6,141.00	773.15	-248.91	310.89	12.00	12.00	0.00
Start 9597.10 hold at 6491.70 MD - 03-62-4-414882 LP									
6,500.00	89.76	270.17	6,141.04	773.18	-257.21	319.16	0.00	0.00	0.00
6,600.00	89.76	270.17	6,141.45	773.48	-357.21	418.86	0.00	0.00	0.00
6,700.00	89.76	270.17	6,141.87	773.79	-457.21	518.55	0.00	0.00	0.00
6,800.00	89.76	270.17	6,142.29	774.09	-557.21	618.24	0.00	0.00	0.00
6,900.00	89.76	270.17	6,142.70	774.40	-657.21	717.94	0.00	0.00	0.00
7,000.00	89.76	270.17	6,143.12	774.70	-757.21	817.63	0.00	0.00	0.00
7,100.00	89.76	270.17	6,143.54	775.01	-857.21	917.32	0.00	0.00	0.00
7,200.00	89.76	270.17	6,143.95	775.31	-957.21	1,017.01	0.00	0.00	0.00
7,300.00	89.76	270.17	6,144.37	775.62	-1,057.20	1,116.71	0.00	0.00	0.00
7,400.00	89.76	270.17	6,144.79	775.92	-1,157.20	1,216.40	0.00	0.00	0.00
7,500.00	89.76	270.17	6,145.20	776.23	-1,257.20	1,316.09	0.00	0.00	0.00
7,600.00	89.76	270.17	6,145.62	776.53	-1,357.20	1,415.79	0.00	0.00	0.00
7,700.00	89.76	270.17	6,146.04	776.84	-1,457.20	1,515.48	0.00	0.00	0.00
7,800.00	89.76	270.17	6,146.45	777.14	-1,557.20	1,615.17	0.00	0.00	0.00
7,900.00	89.76	270.17	6,146.87	777.45	-1,657.20	1,714.87	0.00	0.00	0.00
8,000.00	89.76	270.17	6,147.29	777.75	-1,757.19	1,814.56	0.00	0.00	0.00
8,100.00	89.76	270.17	6,147.70	778.06	-1,857.19	1,914.25	0.00	0.00	0.00
8,200.00	89.76	270.17	6,148.12	778.36	-1,957.19	2,013.95	0.00	0.00	0.00
8,300.00	89.76	270.17	6,148.54	778.67	-2,057.19	2,113.64	0.00	0.00	0.00
8,400.00	89.76	270.17	6,148.95	778.97	-2,157.19	2,213.33	0.00	0.00	0.00
8,500.00	89.76	270.17	6,149.37	779.28	-2,257.19	2,313.02	0.00	0.00	0.00
8,600.00	89.76	270.17	6,149.79	779.58	-2,357.19	2,412.72	0.00	0.00	0.00
8,700.00	89.76	270.17	6,150.20	779.89	-2,457.19	2,512.41	0.00	0.00	0.00
8,800.00	89.76	270.17	6,150.62	780.19	-2,557.18	2,612.10	0.00	0.00	0.00
8,900.00	89.76	270.17	6,151.04	780.50	-2,657.18	2,711.80	0.00	0.00	0.00
9,000.00	89.76	270.17	6,151.46	780.80	-2,757.18	2,811.49	0.00	0.00	0.00
9,100.00	89.76	270.17	6,151.87	781.11	-2,857.18	2,911.18	0.00	0.00	0.00
9,200.00	89.76	270.17	6,152.29	781.41	-2,957.18	3,010.88	0.00	0.00	0.00
9,300.00	89.76	270.17	6,152.71	781.72	-3,057.18	3,110.57	0.00	0.00	0.00

<b>Database:</b>	Casper District	<b>Local Co-ordinate Reference:</b>	Well Anschutz Equus Farms 03-62-04-4148B2
<b>Company:</b>	Bill Barrett Corp.	<b>TVD Reference:</b>	GL 4591 @ 4591.00ft (Original Well Elev)
<b>Project:</b>	Weld County, CO NAD 83	<b>MD Reference:</b>	GL 4591 @ 4591.00ft (Original Well Elev)
<b>Site:</b>	Anschutz Equus Farms 3-62-4 5 SESE Pad	<b>North Reference:</b>	True
<b>Well:</b>	Anschutz Equus Farms 03-62-04-4148B2	<b>Survey Calculation Method:</b>	Minimum Curvature
<b>Wellbore:</b>	OH		
<b>Design:</b>	Plan #1		

Planned Survey									
Measured Depth (ft)	Inclination (°)	Azimuth (°)	Vertical Depth (ft)	+N/-S (ft)	+E/-W (ft)	Vertical Section (ft)	Dogleg Rate (°/100ft)	Build Rate (°/100ft)	Turn Rate (°/100ft)
9,400.00	89.76	270.17	6,153.12	782.02	-3,157.18	3,210.26	0.00	0.00	0.00
9,500.00	89.76	270.17	6,153.54	782.33	-3,257.17	3,309.95	0.00	0.00	0.00
9,600.00	89.76	270.17	6,153.96	782.63	-3,357.17	3,409.65	0.00	0.00	0.00
9,700.00	89.76	270.17	6,154.37	782.94	-3,457.17	3,509.34	0.00	0.00	0.00
9,800.00	89.76	270.17	6,154.79	783.24	-3,557.17	3,609.03	0.00	0.00	0.00
9,900.00	89.76	270.17	6,155.21	783.55	-3,657.17	3,708.73	0.00	0.00	0.00
10,000.00	89.76	270.17	6,155.62	783.85	-3,757.17	3,808.42	0.00	0.00	0.00
10,100.00	89.76	270.17	6,156.04	784.16	-3,857.17	3,908.11	0.00	0.00	0.00
10,200.00	89.76	270.17	6,156.46	784.46	-3,957.17	4,007.81	0.00	0.00	0.00
10,300.00	89.76	270.17	6,156.87	784.77	-4,057.16	4,107.50	0.00	0.00	0.00
10,400.00	89.76	270.17	6,157.29	785.07	-4,157.16	4,207.19	0.00	0.00	0.00
10,500.00	89.76	270.17	6,157.71	785.38	-4,257.16	4,306.89	0.00	0.00	0.00
10,600.00	89.76	270.17	6,158.12	785.68	-4,357.16	4,406.58	0.00	0.00	0.00
10,700.00	89.76	270.17	6,158.54	785.99	-4,457.16	4,506.27	0.00	0.00	0.00
10,800.00	89.76	270.17	6,158.96	786.29	-4,557.16	4,605.96	0.00	0.00	0.00
10,900.00	89.76	270.17	6,159.37	786.60	-4,657.16	4,705.66	0.00	0.00	0.00
11,000.00	89.76	270.17	6,159.79	786.90	-4,757.15	4,805.35	0.00	0.00	0.00
11,100.00	89.76	270.17	6,160.21	787.21	-4,857.15	4,905.04	0.00	0.00	0.00
11,200.00	89.76	270.17	6,160.62	787.51	-4,957.15	5,004.74	0.00	0.00	0.00
11,300.00	89.76	270.17	6,161.04	787.82	-5,057.15	5,104.43	0.00	0.00	0.00
11,400.00	89.76	270.17	6,161.46	788.12	-5,157.15	5,204.12	0.00	0.00	0.00
11,500.00	89.76	270.17	6,161.87	788.43	-5,257.15	5,303.82	0.00	0.00	0.00
11,600.00	89.76	270.17	6,162.29	788.73	-5,357.15	5,403.51	0.00	0.00	0.00
11,700.00	89.76	270.17	6,162.71	789.04	-5,457.15	5,503.20	0.00	0.00	0.00
11,800.00	89.76	270.17	6,163.13	789.34	-5,557.14	5,602.90	0.00	0.00	0.00
11,900.00	89.76	270.17	6,163.54	789.65	-5,657.14	5,702.59	0.00	0.00	0.00
12,000.00	89.76	270.17	6,163.96	789.95	-5,757.14	5,802.28	0.00	0.00	0.00
12,100.00	89.76	270.17	6,164.38	790.26	-5,857.14	5,901.97	0.00	0.00	0.00
12,200.00	89.76	270.17	6,164.79	790.56	-5,957.14	6,001.67	0.00	0.00	0.00
12,300.00	89.76	270.17	6,165.21	790.87	-6,057.14	6,101.36	0.00	0.00	0.00
12,400.00	89.76	270.17	6,165.63	791.17	-6,157.14	6,201.05	0.00	0.00	0.00
12,500.00	89.76	270.17	6,166.04	791.48	-6,257.13	6,300.75	0.00	0.00	0.00
12,600.00	89.76	270.17	6,166.46	791.78	-6,357.13	6,400.44	0.00	0.00	0.00
12,700.00	89.76	270.17	6,166.88	792.09	-6,457.13	6,500.13	0.00	0.00	0.00
12,800.00	89.76	270.17	6,167.29	792.39	-6,557.13	6,599.83	0.00	0.00	0.00
12,900.00	89.76	270.17	6,167.71	792.70	-6,657.13	6,699.52	0.00	0.00	0.00
13,000.00	89.76	270.17	6,168.13	793.00	-6,757.13	6,799.21	0.00	0.00	0.00
13,100.00	89.76	270.17	6,168.54	793.31	-6,857.13	6,898.90	0.00	0.00	0.00
13,200.00	89.76	270.17	6,168.96	793.61	-6,957.13	6,998.60	0.00	0.00	0.00
13,300.00	89.76	270.17	6,169.38	793.92	-7,057.12	7,098.29	0.00	0.00	0.00
13,400.00	89.76	270.17	6,169.79	794.22	-7,157.12	7,197.98	0.00	0.00	0.00
13,500.00	89.76	270.17	6,170.21	794.53	-7,257.12	7,297.68	0.00	0.00	0.00
13,600.00	89.76	270.17	6,170.63	794.83	-7,357.12	7,397.37	0.00	0.00	0.00
13,700.00	89.76	270.17	6,171.04	795.14	-7,457.12	7,497.06	0.00	0.00	0.00
13,800.00	89.76	270.17	6,171.46	795.44	-7,557.12	7,596.76	0.00	0.00	0.00
13,900.00	89.76	270.17	6,171.88	795.75	-7,657.12	7,696.45	0.00	0.00	0.00
14,000.00	89.76	270.17	6,172.29	796.05	-7,757.11	7,796.14	0.00	0.00	0.00
14,100.00	89.76	270.17	6,172.71	796.36	-7,857.11	7,895.84	0.00	0.00	0.00
14,200.00	89.76	270.17	6,173.13	796.66	-7,957.11	7,995.53	0.00	0.00	0.00
14,300.00	89.76	270.17	6,173.54	796.97	-8,057.11	8,095.22	0.00	0.00	0.00
14,400.00	89.76	270.17	6,173.96	797.27	-8,157.11	8,194.91	0.00	0.00	0.00
14,500.00	89.76	270.17	6,174.38	797.58	-8,257.11	8,294.61	0.00	0.00	0.00
14,600.00	89.76	270.17	6,174.80	797.88	-8,357.11	8,394.30	0.00	0.00	0.00

<b>Database:</b>	Casper District	<b>Local Co-ordinate Reference:</b>	Well Anschutz Equus Farms 03-62-04-4148B2
<b>Company:</b>	Bill Barrett Corp.	<b>TVD Reference:</b>	GL 4591 @ 4591.00ft (Original Well Elev)
<b>Project:</b>	Weld County, CO NAD 83	<b>MD Reference:</b>	GL 4591 @ 4591.00ft (Original Well Elev)
<b>Site:</b>	Anschutz Equus Farms 3-62-4 5 SESE Pad	<b>North Reference:</b>	True
<b>Well:</b>	Anschutz Equus Farms 03-62-04-4148B2	<b>Survey Calculation Method:</b>	Minimum Curvature
<b>Wellbore:</b>	OH		
<b>Design:</b>	Plan #1		

Planned Survey										
Measured Depth (ft)	Inclination (°)	Azimuth (°)	Vertical Depth (ft)	+N/-S (ft)	+E/-W (ft)	Vertical Section (ft)	Dogleg Rate (°/100ft)	Build Rate (°/100ft)	Turn Rate (°/100ft)	
14,700.00	89.76	270.17	6,175.21	798.19	-8,457.11	8,493.99	0.00	0.00	0.00	
14,800.00	89.76	270.17	6,175.63	798.50	-8,557.10	8,593.69	0.00	0.00	0.00	
14,900.00	89.76	270.17	6,176.05	798.80	-8,657.10	8,693.38	0.00	0.00	0.00	
15,000.00	89.76	270.17	6,176.46	799.11	-8,757.10	8,793.07	0.00	0.00	0.00	
15,100.00	89.76	270.17	6,176.88	799.41	-8,857.10	8,892.77	0.00	0.00	0.00	
15,200.00	89.76	270.17	6,177.30	799.72	-8,957.10	8,992.46	0.00	0.00	0.00	
15,300.00	89.76	270.17	6,177.71	800.02	-9,057.10	9,092.15	0.00	0.00	0.00	
15,400.00	89.76	270.17	6,178.13	800.33	-9,157.10	9,191.85	0.00	0.00	0.00	
15,500.00	89.76	270.17	6,178.55	800.63	-9,257.09	9,291.54	0.00	0.00	0.00	
15,600.00	89.76	270.17	6,178.96	800.94	-9,357.09	9,391.23	0.00	0.00	0.00	
15,700.00	89.76	270.17	6,179.38	801.24	-9,457.09	9,490.92	0.00	0.00	0.00	
15,800.00	89.76	270.17	6,179.80	801.55	-9,557.09	9,590.62	0.00	0.00	0.00	
15,900.00	89.76	270.17	6,180.21	801.85	-9,657.09	9,690.31	0.00	0.00	0.00	
16,000.00	89.76	270.17	6,180.63	802.16	-9,757.09	9,790.00	0.00	0.00	0.00	
16,088.80	89.76	270.17	6,181.00	802.43	-9,845.88	9,878.53	0.00	0.00	0.00	
TD at 16088.80 - 03-62-4-414882 PBHL										

Design Targets										
Target Name	Dip Angle (°)	Dip Dir. (°)	TVD (ft)	+N/-S (ft)	+E/-W (ft)	Northing (usft)	Easting (usft)	Latitude	Longitude	
03-62-4-414882 LP - hit/miss target - Shape - Point	0.00	0.00	6,141.00	773.15	-248.91	1,336,899.23	3,329,034.31	40° 15' 7.860 N	104° 19' 16.060 W	
03-62-4-414882 PBHL - plan hits target center - Point	0.00	0.00	6,181.00	802.43	-9,845.88	1,336,800.83	3,319,437.82	40° 15' 8.130 N	104° 21' 19.840 W	

Plan Annotations					
Measured Depth (ft)	Vertical Depth (ft)	Local Coordinates			
		+N/-S (ft)	+E/-W (ft)	Comment	
800.00	800.00	0.00	0.00	Start Build 2.00	
1,400.18	1,395.80	60.10	17.65	Start 3264.78 hold at 1400.18 MD	
4,664.97	4,589.20	711.60	208.91	Start Drop -2.00	
5,265.15	5,185.00	771.70	226.56	Start 478.54 hold at 5265.15 MD	
5,743.69	5,663.54	771.70	226.56	Start DLS 12.00 TFO 270.17	
6,491.70	6,141.00	773.15	-248.91	Start 9597.10 hold at 6491.70 MD	
16,088.80	6,181.00	802.43	-9,845.88	TD at 16088.80	