

**PROJECT DETAILS: Weld County, CO NAD 83**

Geodetic System: US State Plane 1983  
Datum: North American Datum 1983  
Ellipsoid: GRS 1980  
Zone: Colorado Northern Zone  
System Datum: Mean Sea Level  
Local North: True

Project: Weld County, CO NAD 83  
Site: Anschutz Equus Farms 3-62-4 5 SESE Pac  
Well: Anschutz Equus Farms 03-62-04-4148C2  
Wellbore: OH  
Design: Plan #1



Azimuths to True North  
Magnetic North: 8.22°

Magnetic Field  
Strength: 52542.7nT  
Dip Angle: 66.91°  
Date: 2/12/2016  
Model: BGGM2015

**SECTION DETAILS**

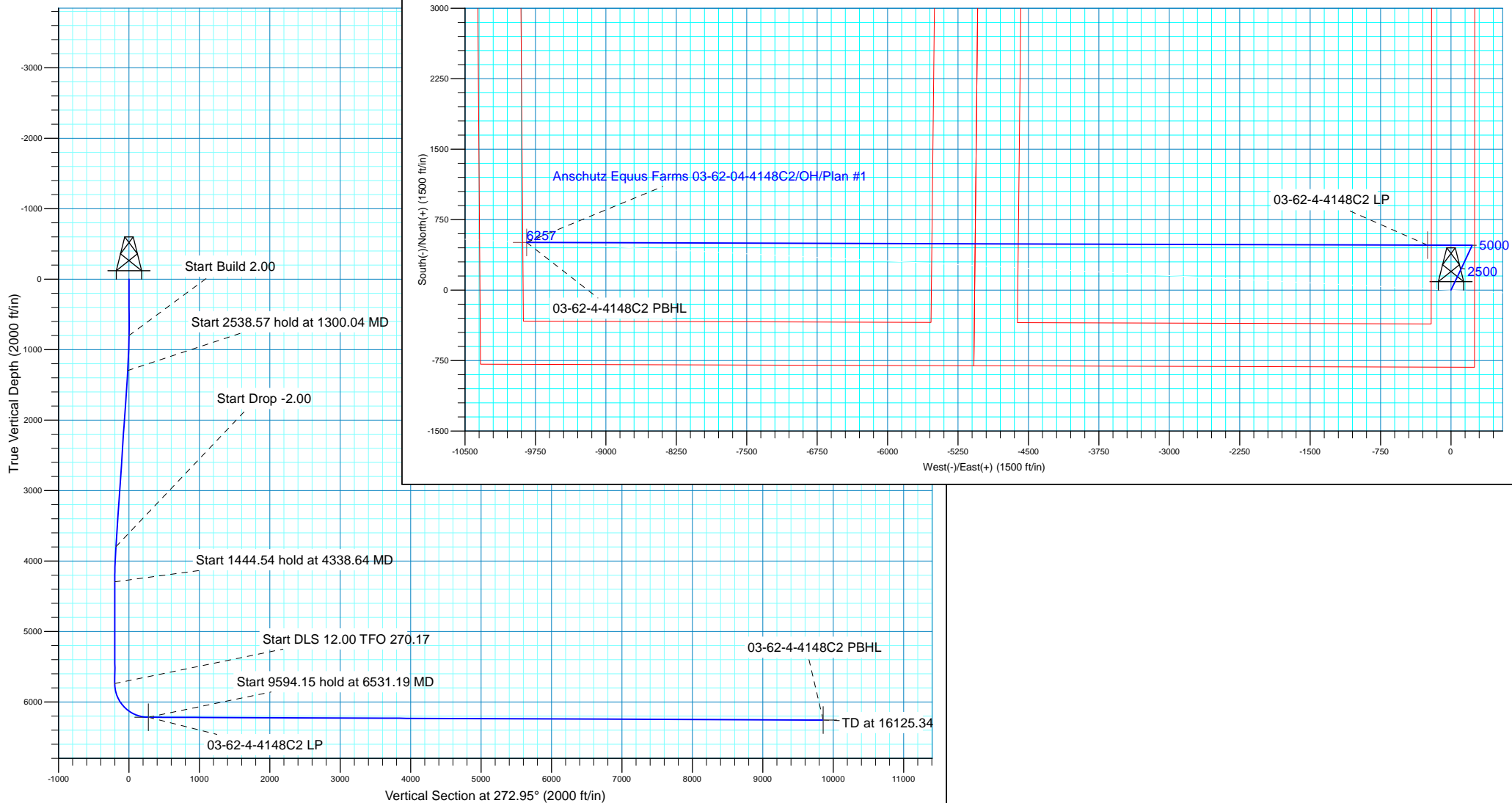
MD	Inc	Azi	TVD	+N/-S	+E/-W	Dleg	TFace	VSect
0.00	0.00	0.00	0.00	0.00	0.00	0.00	0.00	0.00
800.00	0.00	0.00	800.00	0.00	0.00	0.00	0.00	0.00
1300.04	10.00	25.32	1297.50	39.35	18.62	2.00	25.32	-16.56
3838.61	10.00	25.32	3797.50	437.84	207.16	0.00	0.00	-184.33
4338.64	0.00	0.00	4295.00	477.19	225.78	2.00	180.00	-200.89
5783.18	0.00	0.00	5739.54	477.19	225.78	0.00	0.00	-200.89
6531.19	89.76	270.17	6217.00	478.64	-249.69	12.00	270.17	274.02
16125.34	89.76	270.17	6257.00	507.92	-9843.72	0.00	0.00	9856.81

Plan: Plan #1 (Anschutz Equus Farms 03-62-04-4148C2/OH)

Created By: rscott Date: 17:35, February 15 2016

**WELL DETAILS: Anschutz Equus Farms 03-62-04-4148C2**

GL 4591 @ 4591.00ft (Original Well Elev) 4591.00  
+N/-S +E/-W Northing Easting Latitude Longitude  
0.00 0.00 1336099.15 3329293.8940° 14' 59.920 N 104° 19' 12.850 W





## **Bill Barrett Corp.**

**Weld County, CO NAD 83**

**Anschutz Equus Farms 3-62-4 5 SESE Pad**

**Anschutz Equus Farms 03-62-04-4148C2**

**OH**

**Plan: Plan #1**

## **Standard Planning Report**

**15 February, 2016**



<b>Database:</b>	Casper District	<b>Local Co-ordinate Reference:</b>	Well Anschutz Equus Farms 03-62-04-4148C2
<b>Company:</b>	Bill Barrett Corp.	<b>TVD Reference:</b>	GL 4591 @ 4591.00ft (Original Well Elev)
<b>Project:</b>	Weld County, CO NAD 83	<b>MD Reference:</b>	GL 4591 @ 4591.00ft (Original Well Elev)
<b>Site:</b>	Anschutz Equus Farms 3-62-4 5 SESE Pad	<b>North Reference:</b>	True
<b>Well:</b>	Anschutz Equus Farms 03-62-04-4148C2	<b>Survey Calculation Method:</b>	Minimum Curvature
<b>Wellbore:</b>	OH		
<b>Design:</b>	Plan #1		

<b>Project</b>	Weld County, CO NAD 83		
<b>Map System:</b>	US State Plane 1983	<b>System Datum:</b>	Mean Sea Level
<b>Geo Datum:</b>	North American Datum 1983		
<b>Map Zone:</b>	Colorado Northern Zone		

<b>Site</b>	Anschutz Equus Farms 3-62-4 5 SESE Pad, SE 1/4 SE 1/4, SECTION 4, T3N, R62WJ.. 6th P.M.		
<b>Site Position:</b>		<b>Northing:</b>	1,336,024.28 usft
<b>From:</b>	Lat/Long	<b>Easting:</b>	3,329,294.89 usft
<b>Position Uncertainty:</b>	0.00 ft	<b>Slot Radius:</b>	13.200 in
		<b>Latitude:</b>	40° 14' 59.180 N
		<b>Longitude:</b>	104° 19' 12.850 W
		<b>Grid Convergence:</b>	0.76 °

<b>Well</b>	Anschutz Equus Farms 03-62-04-4148C2, 820 FSL 250 FEL		
<b>Well Position</b>	<b>+N/-S</b>	74.87 ft	<b>Northing:</b> 1,336,099.15 usft
	<b>+E/-W</b>	0.00 ft	<b>Easting:</b> 3,329,293.89 usft
<b>Position Uncertainty</b>	0.00 ft	<b>Wellhead Elevation:</b>	0.00 ft
		<b>Latitude:</b>	40° 14' 59.920 N
		<b>Longitude:</b>	104° 19' 12.850 W
		<b>Ground Level:</b>	4,591.00 ft

<b>Wellbore</b>	OH				
<b>Magnetics</b>	<b>Model Name</b>	<b>Sample Date</b>	<b>Declination (°)</b>	<b>Dip Angle (°)</b>	<b>Field Strength (nT)</b>
	BGGM2015	2/12/2016	8.22	66.91	52,543

<b>Design</b>	Plan #1			
<b>Audit Notes:</b>				
<b>Version:</b>	<b>Phase:</b>	PLAN	<b>Tie On Depth:</b>	0.00
<b>Vertical Section:</b>	<b>Depth From (TVD) (ft)</b>	<b>+N/-S (ft)</b>	<b>+E/-W (ft)</b>	<b>Direction (°)</b>
	0.00	0.00	0.00	272.95

<b>Plan Sections</b>										
Measured Depth (ft)	Inclination (°)	Azimuth (°)	Vertical Depth (ft)	+N/-S (ft)	+E/-W (ft)	Dogleg Rate (°/100ft)	Build Rate (°/100ft)	Turn Rate (°/100ft)	TFO (°)	Target
0.00	0.00	0.00	0.00	0.00	0.00	0.00	0.00	0.00	0.00	
800.00	0.00	0.00	800.00	0.00	0.00	0.00	0.00	0.00	0.00	
1,300.04	10.00	25.32	1,297.50	39.35	18.62	2.00	2.00	0.00	25.32	
3,838.61	10.00	25.32	3,797.50	437.84	207.16	0.00	0.00	0.00	0.00	
4,338.64	0.00	0.00	4,295.00	477.19	225.78	2.00	-2.00	0.00	180.00	
5,783.18	0.00	0.00	5,739.54	477.19	225.78	0.00	0.00	0.00	0.00	
6,531.19	89.76	270.17	6,217.00	478.64	-249.69	12.00	12.00	-12.01	270.17	
16,125.34	89.76	270.17	6,257.00	507.92	-9,843.72	0.00	0.00	0.00	0.00	03-62-4-4148C2 PBH

<b>Database:</b>	Casper District	<b>Local Co-ordinate Reference:</b>	Well Anschutz Equus Farms 03-62-04-4148C2
<b>Company:</b>	Bill Barrett Corp.	<b>TVD Reference:</b>	GL 4591 @ 4591.00ft (Original Well Elev)
<b>Project:</b>	Weld County, CO NAD 83	<b>MD Reference:</b>	GL 4591 @ 4591.00ft (Original Well Elev)
<b>Site:</b>	Anschutz Equus Farms 3-62-4 5 SESE Pad	<b>North Reference:</b>	True
<b>Well:</b>	Anschutz Equus Farms 03-62-04-4148C2	<b>Survey Calculation Method:</b>	Minimum Curvature
<b>Wellbore:</b>	OH		
<b>Design:</b>	Plan #1		

Planned Survey									
Measured Depth (ft)	Inclination (°)	Azimuth (°)	Vertical Depth (ft)	+N/-S (ft)	+E/-W (ft)	Vertical Section (ft)	Dogleg Rate (°/100ft)	Build Rate (°/100ft)	Turn Rate (°/100ft)
0.00	0.00	0.00	0.00	0.00	0.00	0.00	0.00	0.00	0.00
100.00	0.00	0.00	100.00	0.00	0.00	0.00	0.00	0.00	0.00
200.00	0.00	0.00	200.00	0.00	0.00	0.00	0.00	0.00	0.00
300.00	0.00	0.00	300.00	0.00	0.00	0.00	0.00	0.00	0.00
400.00	0.00	0.00	400.00	0.00	0.00	0.00	0.00	0.00	0.00
500.00	0.00	0.00	500.00	0.00	0.00	0.00	0.00	0.00	0.00
600.00	0.00	0.00	600.00	0.00	0.00	0.00	0.00	0.00	0.00
700.00	0.00	0.00	700.00	0.00	0.00	0.00	0.00	0.00	0.00
800.00	0.00	0.00	800.00	0.00	0.00	0.00	0.00	0.00	0.00
Start Build 2.00									
900.00	2.00	25.32	899.98	1.58	0.75	-0.66	2.00	2.00	0.00
1,000.00	4.00	25.32	999.84	6.31	2.98	-2.66	2.00	2.00	0.00
1,100.00	6.00	25.32	1,099.45	14.19	6.71	-5.97	2.00	2.00	0.00
1,200.00	8.00	25.32	1,198.70	25.20	11.92	-10.61	2.00	2.00	0.00
1,300.00	10.00	25.32	1,297.47	39.34	18.61	-16.56	2.00	2.00	0.00
1,300.04	10.00	25.32	1,297.50	39.35	18.62	-16.56	2.00	2.00	0.00
Start 2538.57 hold at 1300.04 MD									
1,400.00	10.00	25.32	1,395.95	55.04	26.04	-23.17	0.00	0.00	0.00
1,500.00	10.00	25.32	1,494.43	70.74	33.47	-29.78	0.00	0.00	0.00
1,600.00	10.00	25.32	1,592.91	86.43	40.90	-36.39	0.00	0.00	0.00
1,700.00	10.00	25.32	1,691.39	102.13	48.32	-43.00	0.00	0.00	0.00
1,800.00	10.00	25.32	1,789.87	117.83	55.75	-49.60	0.00	0.00	0.00
1,900.00	10.00	25.32	1,888.35	133.53	63.18	-56.21	0.00	0.00	0.00
2,000.00	10.00	25.32	1,986.83	149.22	70.60	-62.82	0.00	0.00	0.00
2,100.00	10.00	25.32	2,085.31	164.92	78.03	-69.43	0.00	0.00	0.00
2,200.00	10.00	25.32	2,183.79	180.62	85.46	-76.04	0.00	0.00	0.00
2,300.00	10.00	25.32	2,282.27	196.32	92.89	-82.65	0.00	0.00	0.00
2,400.00	10.00	25.32	2,380.75	212.02	100.31	-89.26	0.00	0.00	0.00
2,500.00	10.00	25.32	2,479.23	227.71	107.74	-95.86	0.00	0.00	0.00
2,600.00	10.00	25.32	2,577.71	243.41	115.17	-102.47	0.00	0.00	0.00
2,700.00	10.00	25.32	2,676.19	259.11	122.60	-109.08	0.00	0.00	0.00
2,800.00	10.00	25.32	2,774.67	274.81	130.02	-115.69	0.00	0.00	0.00
2,900.00	10.00	25.32	2,873.15	290.50	137.45	-122.30	0.00	0.00	0.00
3,000.00	10.00	25.32	2,971.63	306.20	144.88	-128.91	0.00	0.00	0.00
3,100.00	10.00	25.32	3,070.12	321.90	152.30	-135.52	0.00	0.00	0.00
3,200.00	10.00	25.32	3,168.60	337.60	159.73	-142.12	0.00	0.00	0.00
3,300.00	10.00	25.32	3,267.08	353.29	167.16	-148.73	0.00	0.00	0.00
3,400.00	10.00	25.32	3,365.56	368.99	174.59	-155.34	0.00	0.00	0.00
3,500.00	10.00	25.32	3,464.04	384.69	182.01	-161.95	0.00	0.00	0.00
3,600.00	10.00	25.32	3,562.52	400.39	189.44	-168.56	0.00	0.00	0.00
3,700.00	10.00	25.32	3,661.00	416.09	196.87	-175.17	0.00	0.00	0.00
3,800.00	10.00	25.32	3,759.48	431.78	204.30	-181.77	0.00	0.00	0.00
3,838.61	10.00	25.32	3,797.50	437.84	207.16	-184.33	0.00	0.00	0.00
Start Drop -2.00									
3,900.00	8.77	25.32	3,858.07	446.89	211.45	-188.14	2.00	-2.00	0.00
4,000.00	6.77	25.32	3,957.15	459.12	217.23	-193.28	2.00	-2.00	0.00
4,100.00	4.77	25.32	4,056.63	468.21	221.53	-197.11	2.00	-2.00	0.00
4,200.00	2.77	25.32	4,156.41	474.16	224.35	-199.61	2.00	-2.00	0.00
4,300.00	0.77	25.32	4,256.36	476.95	225.67	-200.79	2.00	-2.00	0.00
4,338.64	0.00	0.00	4,295.00	477.19	225.78	-200.89	2.00	-2.00	0.00
Start 1444.54 hold at 4338.64 MD									
4,400.00	0.00	0.00	4,356.36	477.19	225.78	-200.89	0.00	0.00	0.00
4,500.00	0.00	0.00	4,456.36	477.19	225.78	-200.89	0.00	0.00	0.00

<b>Database:</b>	Casper District	<b>Local Co-ordinate Reference:</b>	Well Anschutz Equus Farms 03-62-04-4148C2
<b>Company:</b>	Bill Barrett Corp.	<b>TVD Reference:</b>	GL 4591 @ 4591.00ft (Original Well Elev)
<b>Project:</b>	Weld County, CO NAD 83	<b>MD Reference:</b>	GL 4591 @ 4591.00ft (Original Well Elev)
<b>Site:</b>	Anschutz Equus Farms 3-62-4 5 SESE Pad	<b>North Reference:</b>	True
<b>Well:</b>	Anschutz Equus Farms 03-62-04-4148C2	<b>Survey Calculation Method:</b>	Minimum Curvature
<b>Wellbore:</b>	OH		
<b>Design:</b>	Plan #1		

Planned Survey									
Measured Depth (ft)	Inclination (°)	Azimuth (°)	Vertical Depth (ft)	+N/-S (ft)	+E/-W (ft)	Vertical Section (ft)	Dogleg Rate (°/100ft)	Build Rate (°/100ft)	Turn Rate (°/100ft)
4,600.00	0.00	0.00	4,556.36	477.19	225.78	-200.89	0.00	0.00	0.00
4,700.00	0.00	0.00	4,656.36	477.19	225.78	-200.89	0.00	0.00	0.00
4,800.00	0.00	0.00	4,756.36	477.19	225.78	-200.89	0.00	0.00	0.00
4,900.00	0.00	0.00	4,856.36	477.19	225.78	-200.89	0.00	0.00	0.00
5,000.00	0.00	0.00	4,956.36	477.19	225.78	-200.89	0.00	0.00	0.00
5,100.00	0.00	0.00	5,056.36	477.19	225.78	-200.89	0.00	0.00	0.00
5,200.00	0.00	0.00	5,156.36	477.19	225.78	-200.89	0.00	0.00	0.00
5,300.00	0.00	0.00	5,256.36	477.19	225.78	-200.89	0.00	0.00	0.00
5,400.00	0.00	0.00	5,356.36	477.19	225.78	-200.89	0.00	0.00	0.00
5,500.00	0.00	0.00	5,456.36	477.19	225.78	-200.89	0.00	0.00	0.00
5,600.00	0.00	0.00	5,556.36	477.19	225.78	-200.89	0.00	0.00	0.00
5,700.00	0.00	0.00	5,656.36	477.19	225.78	-200.89	0.00	0.00	0.00
5,783.18	0.00	0.00	5,739.54	477.19	225.78	-200.89	0.00	0.00	0.00
<b>Start DLS 12.00 TFO 270.17</b>									
5,800.00	2.02	270.17	5,756.35	477.19	225.48	-200.59	12.00	12.00	0.00
5,900.00	14.02	270.17	5,855.20	477.23	211.56	-186.69	12.00	12.00	0.00
6,000.00	26.02	270.17	5,948.98	477.34	177.39	-152.56	12.00	12.00	0.00
6,100.00	38.02	270.17	6,033.62	477.50	124.47	-99.70	12.00	12.00	0.00
6,200.00	50.02	270.17	6,105.40	477.71	55.11	-30.42	12.00	12.00	0.00
6,300.00	62.02	270.17	6,161.19	477.96	-27.66	52.25	12.00	12.00	0.00
6,400.00	74.02	270.17	6,198.55	478.25	-120.22	144.70	12.00	12.00	0.00
6,500.00	86.02	270.17	6,215.85	478.55	-218.53	242.90	12.00	12.00	0.00
6,531.19	89.76	270.17	6,217.00	478.64	-249.69	274.02	12.00	12.00	0.00
<b>Start 9594.15 hold at 6531.19 MD - 03-62-4-4148C2 LP</b>									
6,600.00	89.76	270.17	6,217.29	478.85	-318.50	342.75	0.00	0.00	0.00
6,700.00	89.76	270.17	6,217.70	479.16	-418.50	442.63	0.00	0.00	0.00
6,800.00	89.76	270.17	6,218.12	479.46	-518.50	542.51	0.00	0.00	0.00
6,900.00	89.76	270.17	6,218.54	479.77	-618.50	642.40	0.00	0.00	0.00
7,000.00	89.76	270.17	6,218.96	480.07	-718.49	742.28	0.00	0.00	0.00
7,100.00	89.76	270.17	6,219.37	480.38	-818.49	842.16	0.00	0.00	0.00
7,200.00	89.76	270.17	6,219.79	480.68	-918.49	942.04	0.00	0.00	0.00
7,300.00	89.76	270.17	6,220.21	480.99	-1,018.49	1,041.92	0.00	0.00	0.00
7,400.00	89.76	270.17	6,220.62	481.29	-1,118.49	1,141.80	0.00	0.00	0.00
7,500.00	89.76	270.17	6,221.04	481.60	-1,218.49	1,241.68	0.00	0.00	0.00
7,600.00	89.76	270.17	6,221.46	481.90	-1,318.49	1,341.57	0.00	0.00	0.00
7,700.00	89.76	270.17	6,221.87	482.21	-1,418.48	1,441.45	0.00	0.00	0.00
7,800.00	89.76	270.17	6,222.29	482.51	-1,518.48	1,541.33	0.00	0.00	0.00
7,900.00	89.76	270.17	6,222.71	482.82	-1,618.48	1,641.21	0.00	0.00	0.00
8,000.00	89.76	270.17	6,223.12	483.12	-1,718.48	1,741.09	0.00	0.00	0.00
8,100.00	89.76	270.17	6,223.54	483.43	-1,818.48	1,840.97	0.00	0.00	0.00
8,200.00	89.76	270.17	6,223.96	483.73	-1,918.48	1,940.86	0.00	0.00	0.00
8,300.00	89.76	270.17	6,224.38	484.04	-2,018.48	2,040.74	0.00	0.00	0.00
8,400.00	89.76	270.17	6,224.79	484.34	-2,118.48	2,140.62	0.00	0.00	0.00
8,500.00	89.76	270.17	6,225.21	484.65	-2,218.47	2,240.50	0.00	0.00	0.00
8,600.00	89.76	270.17	6,225.63	484.95	-2,318.47	2,340.38	0.00	0.00	0.00
8,700.00	89.76	270.17	6,226.04	485.26	-2,418.47	2,440.26	0.00	0.00	0.00
8,800.00	89.76	270.17	6,226.46	485.56	-2,518.47	2,540.14	0.00	0.00	0.00
8,900.00	89.76	270.17	6,226.88	485.87	-2,618.47	2,640.03	0.00	0.00	0.00
9,000.00	89.76	270.17	6,227.29	486.18	-2,718.47	2,739.91	0.00	0.00	0.00
9,100.00	89.76	270.17	6,227.71	486.48	-2,818.47	2,839.79	0.00	0.00	0.00
9,200.00	89.76	270.17	6,228.13	486.79	-2,918.46	2,939.67	0.00	0.00	0.00
9,300.00	89.76	270.17	6,228.54	487.09	-3,018.46	3,039.55	0.00	0.00	0.00
9,400.00	89.76	270.17	6,228.96	487.40	-3,118.46	3,139.43	0.00	0.00	0.00

<b>Database:</b>	Casper District	<b>Local Co-ordinate Reference:</b>	Well Anschutz Equus Farms 03-62-04-4148C2
<b>Company:</b>	Bill Barrett Corp.	<b>TVD Reference:</b>	GL 4591 @ 4591.00ft (Original Well Elev)
<b>Project:</b>	Weld County, CO NAD 83	<b>MD Reference:</b>	GL 4591 @ 4591.00ft (Original Well Elev)
<b>Site:</b>	Anschutz Equus Farms 3-62-4 5 SESE Pad	<b>North Reference:</b>	True
<b>Well:</b>	Anschutz Equus Farms 03-62-04-4148C2	<b>Survey Calculation Method:</b>	Minimum Curvature
<b>Wellbore:</b>	OH		
<b>Design:</b>	Plan #1		

Planned Survey									
Measured Depth (ft)	Inclination (°)	Azimuth (°)	Vertical Depth (ft)	+N/-S (ft)	+E/-W (ft)	Vertical Section (ft)	Dogleg Rate (°/100ft)	Build Rate (°/100ft)	Turn Rate (°/100ft)
9,500.00	89.76	270.17	6,229.38	487.70	-3,218.46	3,239.32	0.00	0.00	0.00
9,600.00	89.76	270.17	6,229.80	488.01	-3,318.46	3,339.20	0.00	0.00	0.00
9,700.00	89.76	270.17	6,230.21	488.31	-3,418.46	3,439.08	0.00	0.00	0.00
9,800.00	89.76	270.17	6,230.63	488.62	-3,518.46	3,538.96	0.00	0.00	0.00
9,900.00	89.76	270.17	6,231.05	488.92	-3,618.46	3,638.84	0.00	0.00	0.00
10,000.00	89.76	270.17	6,231.46	489.23	-3,718.45	3,738.72	0.00	0.00	0.00
10,100.00	89.76	270.17	6,231.88	489.53	-3,818.45	3,838.60	0.00	0.00	0.00
10,200.00	89.76	270.17	6,232.30	489.84	-3,918.45	3,938.49	0.00	0.00	0.00
10,300.00	89.76	270.17	6,232.71	490.14	-4,018.45	4,038.37	0.00	0.00	0.00
10,400.00	89.76	270.17	6,233.13	490.45	-4,118.45	4,138.25	0.00	0.00	0.00
10,500.00	89.76	270.17	6,233.55	490.75	-4,218.45	4,238.13	0.00	0.00	0.00
10,600.00	89.76	270.17	6,233.96	491.06	-4,318.45	4,338.01	0.00	0.00	0.00
10,700.00	89.76	270.17	6,234.38	491.36	-4,418.44	4,437.89	0.00	0.00	0.00
10,800.00	89.76	270.17	6,234.80	491.67	-4,518.44	4,537.78	0.00	0.00	0.00
10,900.00	89.76	270.17	6,235.21	491.97	-4,618.44	4,637.66	0.00	0.00	0.00
11,000.00	89.76	270.17	6,235.63	492.28	-4,718.44	4,737.54	0.00	0.00	0.00
11,100.00	89.76	270.17	6,236.05	492.58	-4,818.44	4,837.42	0.00	0.00	0.00
11,200.00	89.76	270.17	6,236.47	492.89	-4,918.44	4,937.30	0.00	0.00	0.00
11,300.00	89.76	270.17	6,236.88	493.19	-5,018.44	5,037.18	0.00	0.00	0.00
11,400.00	89.76	270.17	6,237.30	493.50	-5,118.44	5,137.06	0.00	0.00	0.00
11,500.00	89.76	270.17	6,237.72	493.80	-5,218.43	5,236.95	0.00	0.00	0.00
11,600.00	89.76	270.17	6,238.13	494.11	-5,318.43	5,336.83	0.00	0.00	0.00
11,700.00	89.76	270.17	6,238.55	494.41	-5,418.43	5,436.71	0.00	0.00	0.00
11,800.00	89.76	270.17	6,238.97	494.72	-5,518.43	5,536.59	0.00	0.00	0.00
11,900.00	89.76	270.17	6,239.38	495.03	-5,618.43	5,636.47	0.00	0.00	0.00
12,000.00	89.76	270.17	6,239.80	495.33	-5,718.43	5,736.35	0.00	0.00	0.00
12,100.00	89.76	270.17	6,240.22	495.64	-5,818.43	5,836.24	0.00	0.00	0.00
12,200.00	89.76	270.17	6,240.63	495.94	-5,918.42	5,936.12	0.00	0.00	0.00
12,300.00	89.76	270.17	6,241.05	496.25	-6,018.42	6,036.00	0.00	0.00	0.00
12,400.00	89.76	270.17	6,241.47	496.55	-6,118.42	6,135.88	0.00	0.00	0.00
12,500.00	89.76	270.17	6,241.89	496.86	-6,218.42	6,235.76	0.00	0.00	0.00
12,600.00	89.76	270.17	6,242.30	497.16	-6,318.42	6,335.64	0.00	0.00	0.00
12,700.00	89.76	270.17	6,242.72	497.47	-6,418.42	6,435.52	0.00	0.00	0.00
12,800.00	89.76	270.17	6,243.14	497.77	-6,518.42	6,535.41	0.00	0.00	0.00
12,900.00	89.76	270.17	6,243.55	498.08	-6,618.42	6,635.29	0.00	0.00	0.00
13,000.00	89.76	270.17	6,243.97	498.38	-6,718.41	6,735.17	0.00	0.00	0.00
13,100.00	89.76	270.17	6,244.39	498.69	-6,818.41	6,835.05	0.00	0.00	0.00
13,200.00	89.76	270.17	6,244.80	498.99	-6,918.41	6,934.93	0.00	0.00	0.00
13,300.00	89.76	270.17	6,245.22	499.30	-7,018.41	7,034.81	0.00	0.00	0.00
13,400.00	89.76	270.17	6,245.64	499.60	-7,118.41	7,134.70	0.00	0.00	0.00
13,500.00	89.76	270.17	6,246.05	499.91	-7,218.41	7,234.58	0.00	0.00	0.00
13,600.00	89.76	270.17	6,246.47	500.21	-7,318.41	7,334.46	0.00	0.00	0.00
13,700.00	89.76	270.17	6,246.89	500.52	-7,418.40	7,434.34	0.00	0.00	0.00
13,800.00	89.76	270.17	6,247.31	500.82	-7,518.40	7,534.22	0.00	0.00	0.00
13,900.00	89.76	270.17	6,247.72	501.13	-7,618.40	7,634.10	0.00	0.00	0.00
14,000.00	89.76	270.17	6,248.14	501.43	-7,718.40	7,733.98	0.00	0.00	0.00
14,100.00	89.76	270.17	6,248.56	501.74	-7,818.40	7,833.87	0.00	0.00	0.00
14,200.00	89.76	270.17	6,248.97	502.04	-7,918.40	7,933.75	0.00	0.00	0.00
14,300.00	89.76	270.17	6,249.39	502.35	-8,018.40	8,033.63	0.00	0.00	0.00
14,400.00	89.76	270.17	6,249.81	502.65	-8,118.40	8,133.51	0.00	0.00	0.00
14,500.00	89.76	270.17	6,250.22	502.96	-8,218.39	8,233.39	0.00	0.00	0.00
14,600.00	89.76	270.17	6,250.64	503.26	-8,318.39	8,333.27	0.00	0.00	0.00
14,700.00	89.76	270.17	6,251.06	503.57	-8,418.39	8,433.16	0.00	0.00	0.00

<b>Database:</b>	Casper District	<b>Local Co-ordinate Reference:</b>	Well Anschutz Equus Farms 03-62-04-4148C2
<b>Company:</b>	Bill Barrett Corp.	<b>TVD Reference:</b>	GL 4591 @ 4591.00ft (Original Well Elev)
<b>Project:</b>	Weld County, CO NAD 83	<b>MD Reference:</b>	GL 4591 @ 4591.00ft (Original Well Elev)
<b>Site:</b>	Anschutz Equus Farms 3-62-4 5 SESE Pad	<b>North Reference:</b>	True
<b>Well:</b>	Anschutz Equus Farms 03-62-04-4148C2	<b>Survey Calculation Method:</b>	Minimum Curvature
<b>Wellbore:</b>	OH		
<b>Design:</b>	Plan #1		

Planned Survey										
Measured Depth (ft)	Inclination (°)	Azimuth (°)	Vertical Depth (ft)	+N/-S (ft)	+E/-W (ft)	Vertical Section (ft)	Dogleg Rate (°/100ft)	Build Rate (°/100ft)	Turn Rate (°/100ft)	
14,800.00	89.76	270.17	6,251.47	503.88	-8,518.39	8,533.04	0.00	0.00	0.00	
14,900.00	89.76	270.17	6,251.89	504.18	-8,618.39	8,632.92	0.00	0.00	0.00	
15,000.00	89.76	270.17	6,252.31	504.49	-8,718.39	8,732.80	0.00	0.00	0.00	
15,100.00	89.76	270.17	6,252.73	504.79	-8,818.39	8,832.68	0.00	0.00	0.00	
15,200.00	89.76	270.17	6,253.14	505.10	-8,918.38	8,932.56	0.00	0.00	0.00	
15,300.00	89.76	270.17	6,253.56	505.40	-9,018.38	9,032.45	0.00	0.00	0.00	
15,400.00	89.76	270.17	6,253.98	505.71	-9,118.38	9,132.33	0.00	0.00	0.00	
15,500.00	89.76	270.17	6,254.39	506.01	-9,218.38	9,232.21	0.00	0.00	0.00	
15,600.00	89.76	270.17	6,254.81	506.32	-9,318.38	9,332.09	0.00	0.00	0.00	
15,700.00	89.76	270.17	6,255.23	506.62	-9,418.38	9,431.97	0.00	0.00	0.00	
15,800.00	89.76	270.17	6,255.64	506.93	-9,518.38	9,531.85	0.00	0.00	0.00	
15,900.00	89.76	270.17	6,256.06	507.23	-9,618.38	9,631.73	0.00	0.00	0.00	
16,000.00	89.76	270.17	6,256.48	507.54	-9,718.37	9,731.62	0.00	0.00	0.00	
16,100.00	89.76	270.17	6,256.89	507.84	-9,818.37	9,831.50	0.00	0.00	0.00	
16,125.34	89.76	270.17	6,257.00	507.92	-9,843.72	9,856.81	0.00	0.00	0.00	
TD at 16125.34 - 03-62-4-4148C2 PBHL										

Design Targets										
Target Name	Dip Angle (°)	Dip Dir. (°)	TVD (ft)	+N/-S (ft)	+E/-W (ft)	Northing (usft)	Easting (usft)	Latitude	Longitude	
03-62-4-4148C2 LP - hit/miss target - Shape - Point	0.00	0.00	6,217.00	478.64	-249.69	1,336,574.42	3,329,037.86	40° 15' 4.650 N	104° 19' 16.070 W	
03-62-4-4148C2 PBHL - plan hits target center - Point	0.00	0.00	6,257.00	507.92	-9,843.72	1,336,476.06	3,319,444.31	40° 15' 4.920 N	104° 21' 19.810 W	

Plan Annotations					
Measured Depth (ft)	Vertical Depth (ft)	Local Coordinates			
		+N/-S (ft)	+E/-W (ft)	Comment	
800.00	800.00	0.00	0.00	Start Build 2.00	
1,300.04	1,297.50	39.35	18.62	Start 2538.57 hold at 1300.04 MD	
3,838.61	3,797.50	437.84	207.16	Start Drop -2.00	
4,338.64	4,295.00	477.19	225.78	Start 1444.54 hold at 4338.64 MD	
5,783.18	5,739.54	477.19	225.78	Start DLS 12.00 TFO 270.17	
6,531.19	6,217.00	478.64	-249.69	Start 9594.15 hold at 6531.19 MD	
16,125.34	6,257.00	507.92	-9,843.72	TD at 16125.34	